

Stūpa-Pillar, South Face.
方柱 南面



A, B) Stūpa-Pillar, South Face, Lower Storey, Right and Left Attendants.

方柱 南面 下層 右脇侍と左脇侍

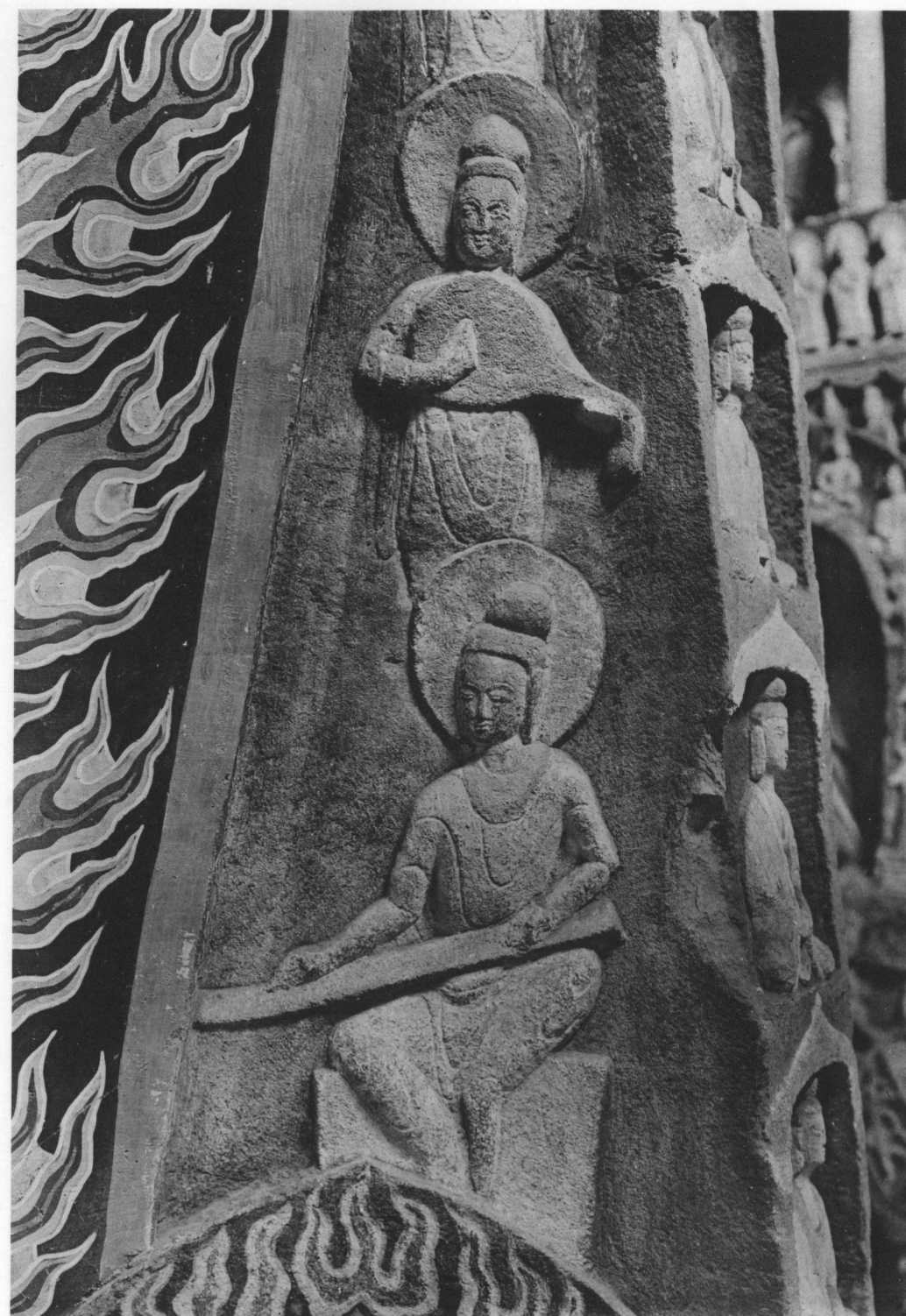


A, B) Stūpa-Pillar, South Face, Lower Storey, Heads of Attendant Bodhisattvas.

方柱 南面 下層 右脇侍と左脇侍 頭部



A) Stūpa-Pillar, South Face, Lower Storey, Left Attendant, Profile of Upper Body.
 方柱 南面 下層 左脇侍 側面



B) Stūpa-Pillar, South Face, Lower Storey, Left Celestial Musicians.
 方柱 南面 下層 左脇樂天像



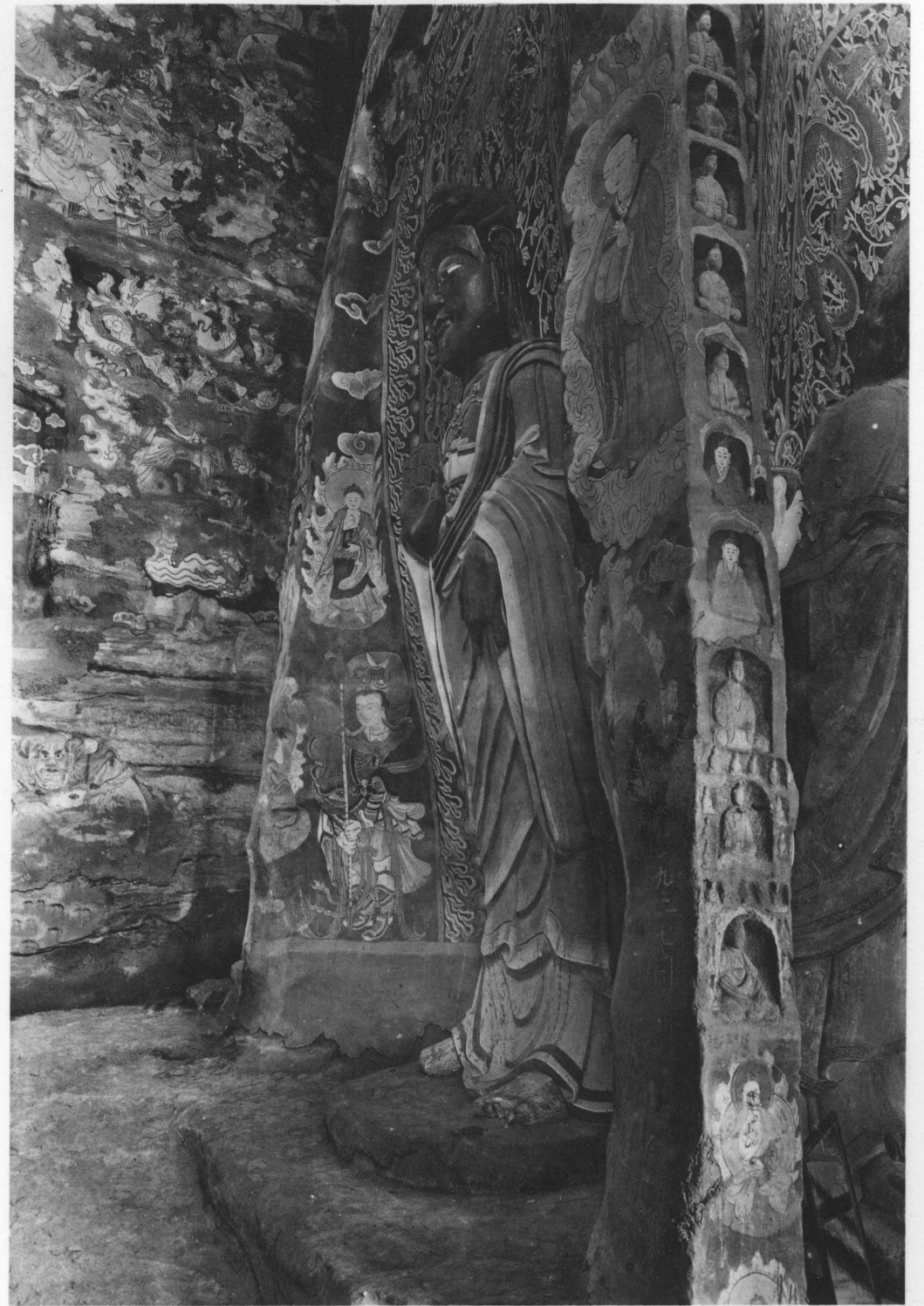
A) Stūpa-Pillar, South and East Faces, Lower Storey.
 方柱 南面と東面 下層



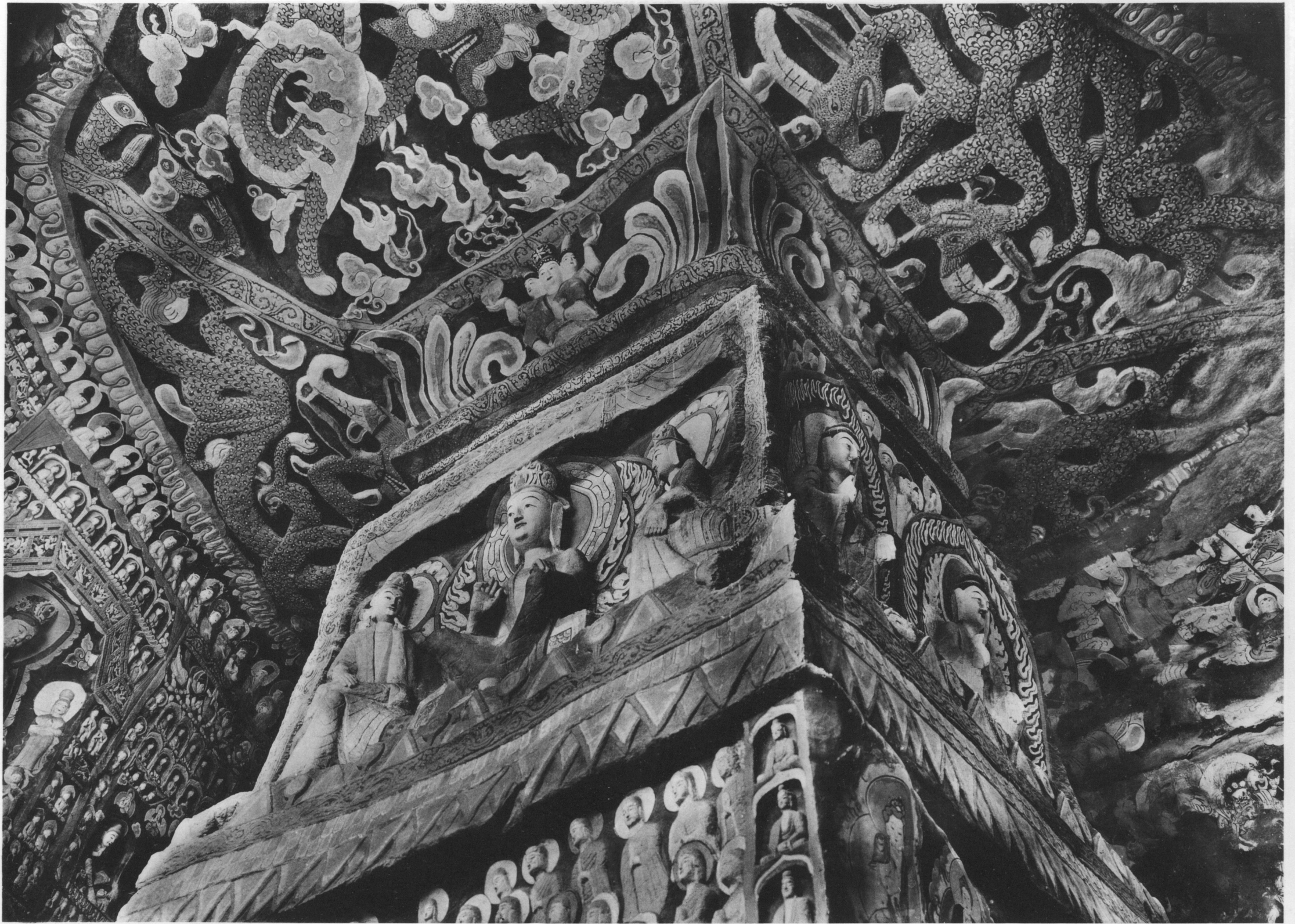
B) Stūpa-Pillar, East Face, Lower Storey.
 方柱 東面 下層



A) Stūpa-Pillar, North Face, Lower Storey.
 方柱 北面 下層

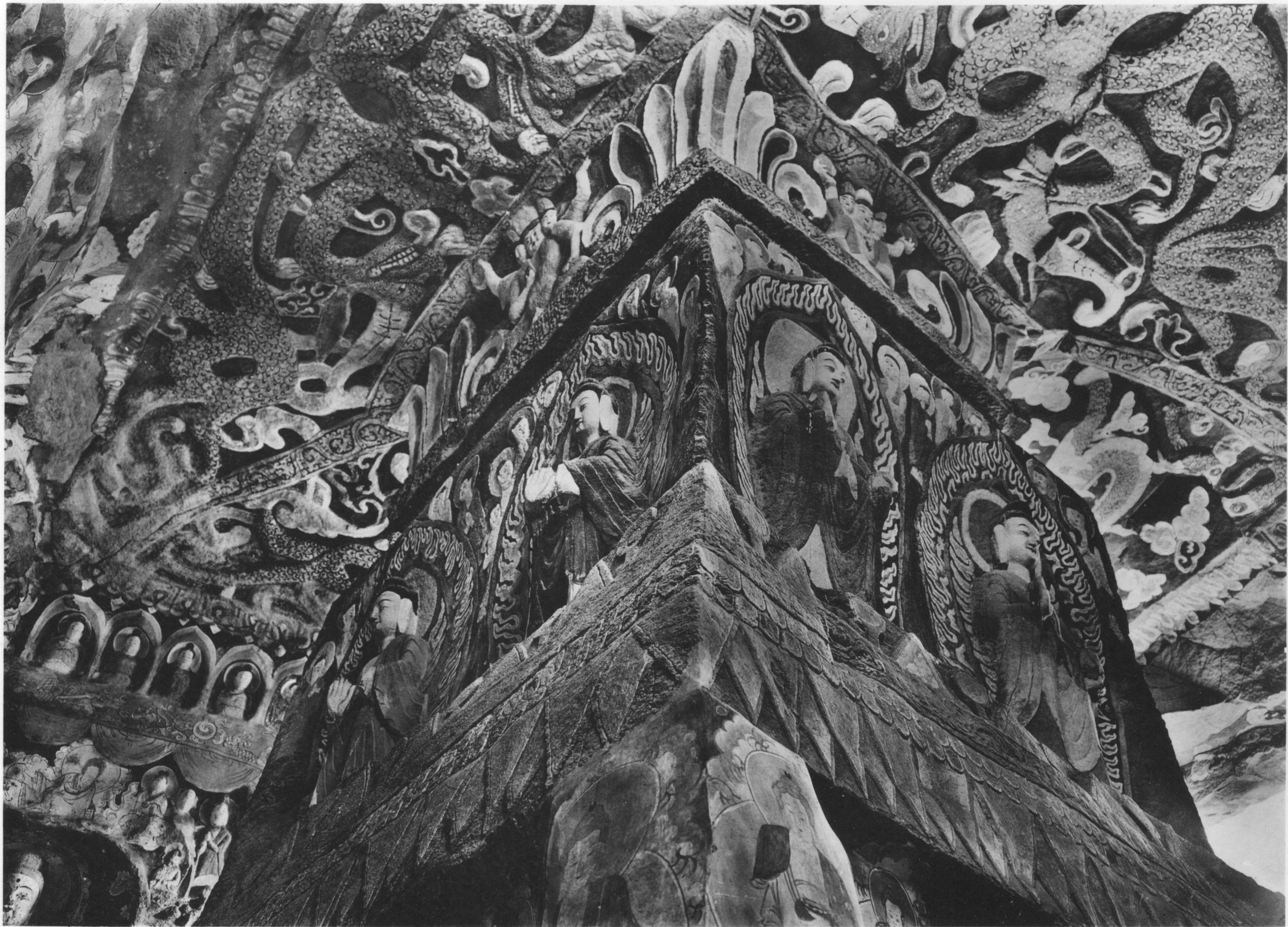


B) Stūpa-Pillar, West Face, Lower Storey.
 方柱 西面 下層



Stūpa-Pillar, South and East Faces, Upper Storey.

方柱 南面と東面 上層



Stūpa-Pillar, North and West Faces, Upper Storey.

方柱 北面と西面 上層



Stūpa-Pillar, West Face, Upper Storey, Two Standing Buddhas.

方柱 西面 上層 二佛並立佛



A



B

A) Ceiling, North Section.

天井 北區

B) Ceiling, South Section.

天井 南區



A



B

A) Ceiling, East Section.

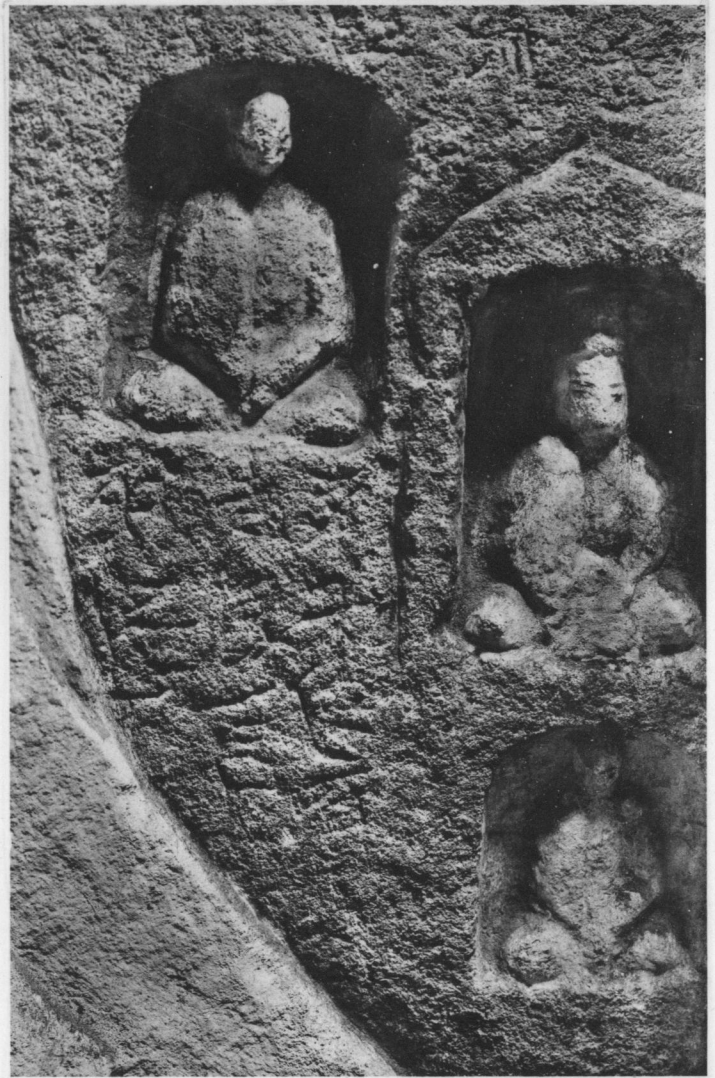
天井 東區

B) Ceiling, West Section.

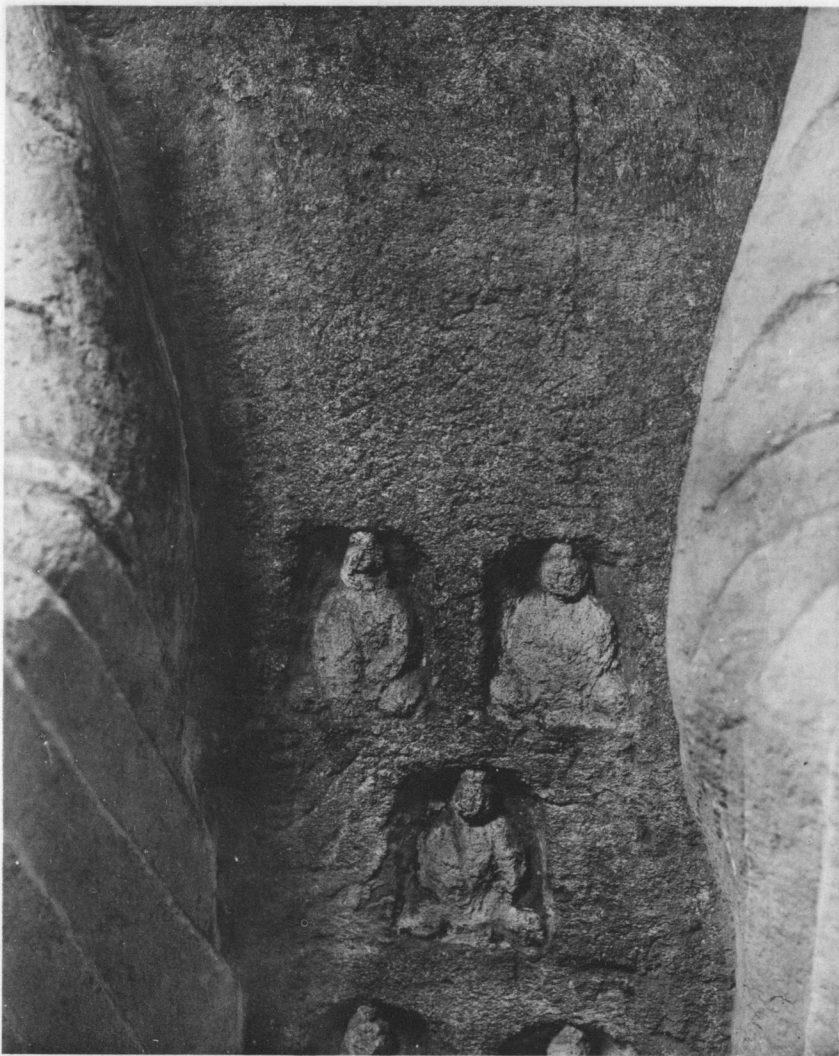
天井 西區



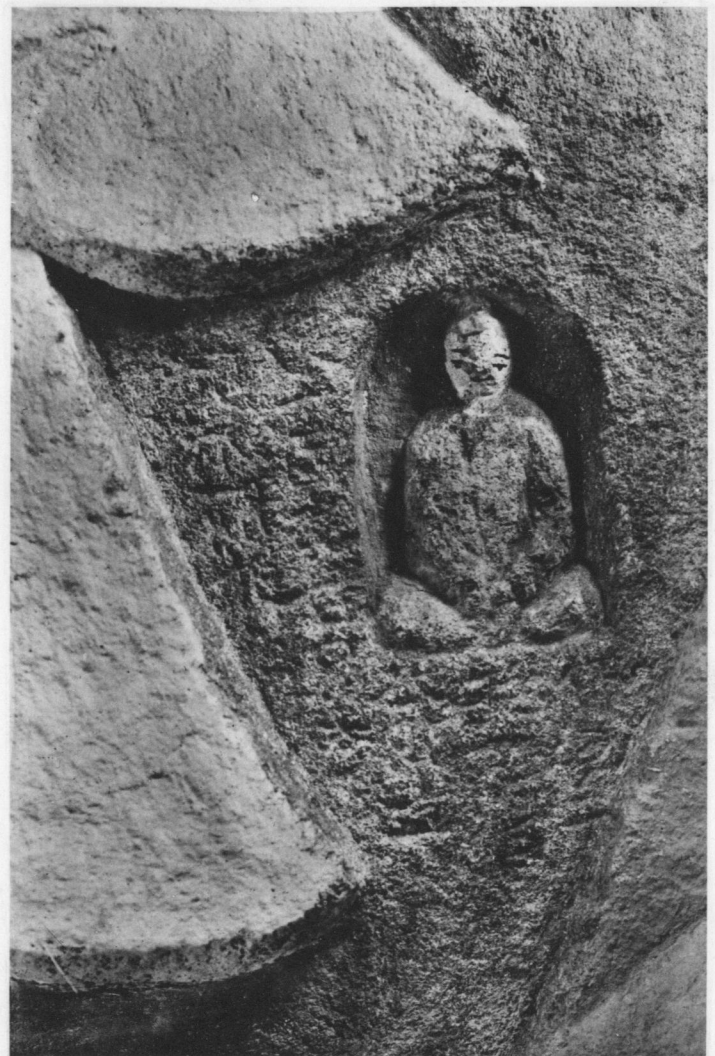
A) Between Fourth and Fifth Standing Buddhas.
 第四, 第五像間



B) Between Fourth and Fifth Standing Buddhas.
 第四, 第五像間



C) Between Second and Third Standing Buddhas.
 第二, 第三像間



D) Between Fourth and Fifth Standing Buddhas.
 第四, 第五像間

A-D) West Wall, Middle Part, Small Niches between Standing Buddhas, Inscriptions.

西壁 中層 七佛列像 像間小龕 造像記



A) South Wall, Niche 39.
南壁 佛龕 (39)



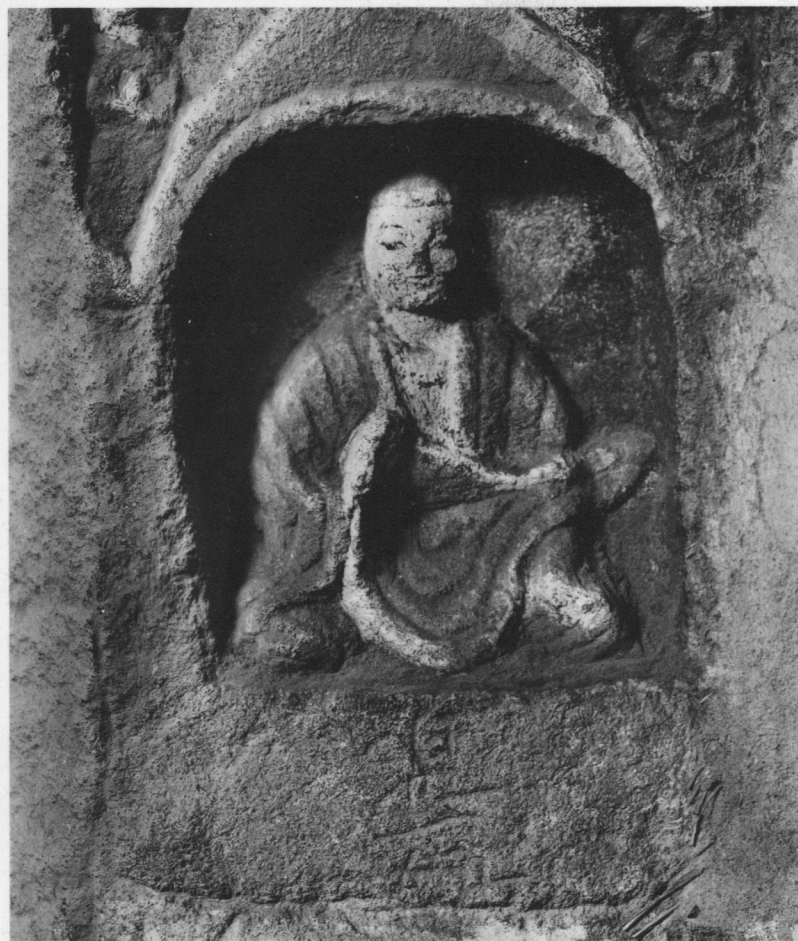
B) East Wall, Niche 51.
東壁 佛龕 (15)



C) West Wall, Niche 50.
西壁 佛龕 (50)



D) East Wall, Niche 30.
東壁 佛龕 (30)



E) West Wall, Small Niche between Niches 37 and 42.
西壁 佛龕 (37), (42) 間 小龕

A-E) South, East and West Walls, Lower Part, Inscriptions.

南, 東, 西壁 · 造像記



A) Window, East Reveal, Niche 5b.
明窓 東側 佛龕 (5b)



B) West Wall, Pagoda 34.
西壁 塔形 (34)



C) South Wall, Niche 39.
南壁 佛龕 (39)



D) West Wall, Pagoda 21.
西壁 塔形 (21)

A-D) Pagoda Reliefs.
各壁 浮彫塔形