

Independent divergence of 13- and 17-y life cycles among three periodical cicada lineages

Teiji Sota^{a,1}, Satoshi Yamamoto^b, John R. Cooley^c, Kathy B. R. Hill^c, Chris Simon^c, Jin Yoshimura^{d,e,f}

^aDepartment of Zoology, Graduate School of Science, Kyoto University, Sakyo, Kyoto 606-8502, Japan. ^bGraduate School of Global Environmental studies, Kyoto University, Sakyo, Kyoto 606-8501, Japan. ^cDepartment of Ecology and Evolutionary Biology, University of Connecticut, 75 N. Eagleville Rd., Storrs, CT 06268-3043, USA.

^dDepartment of Systems Engineering, Shizuoka University, Hamamatsu 432-8561, Japan.

^eMarine Biosystems Research Center, Chiba University, Kamogawa 299-5502, Chiba,

Japan. ^fDepartment of Environmental and Forest Biology, State University of New York College of Environmental Science and Forestry, Syracuse, NY 13210, USA

¹ **Corresponding author:** Teiji Sota, Department of Zoology, Graduate School of Science, Kyoto University, Sakyo, Kyoto 606-8502, Japan; Tel. +81-75-753-4078; Fax +81-75-753-4101; e-mail: sota@terra.zool.kyoto-u.ac.jp.

Author contributions: T.S. and J.Y. designed research; T.S., S.Y., J.R.C., K.B.R.H., C.S., and J.Y. performed research; T.S. and S.Y. analyzed data; and T.S., J.R.C., and C.S. wrote the paper.

Data deposition: The sequences reported in this paper have been deposited in the DNA Data Base of Japan (accession nos. AB740543—AB740917).

The evolution of 13- and 17-year periodical cicadas (*Magicicada*) is enigmatic because at any given location up to three distinct species groups (Decim, Cassini, Decula) with synchronized life cycles are involved. Each species group is divided into one 13- and one 17-year species with the exception of the Decim group which contains two 13-year species; 13-year species are *M. tredecim*, *M. neotredecim*, *M. tredecassini* and *M. tredecula*, and 17-year species are *M. septendecim*, *M. cassini* and *M. septendecula*. Here we show, for the first time, that the divergence leading to the present 13- and 17-year populations differs considerably among the species groups despite the fact that each group exhibits strikingly similar phylogeographic patterning. The earliest divergence of extant lineages occurred approximately 4 million years ago (mya) with one branch forming the Decim species group and the other subsequently splitting 2.5 mya to form the Cassini and Decula species groups. The earliest split of extant lineages into 13- and 17-year life cycles occurred in the Decim lineage 0.5 mya. All three species groups experienced at least one episode of life-cycle divergence since the last glacial maximum. We hypothesize that despite independent origins, the three species groups achieved their current overlapping distributions because life-cycle synchronization of invading congeners to a dominant resident population enabled escape from predation and population persistence. The repeated life-cycle divergences supported by our data suggest the presence of a common genetic basis for the two life cycles in the three species groups.

Key words: life-cycle shift, nurse brood, parallel evolution, speciation

Periodical cicadas (*Magicicada*) in the eastern United States represent one of the most spectacular life history and population phenomena in nature (1-10). These periodical cicadas spend most of their lives (13-years in the south, 17-years in the north) as underground juveniles except for a brief two- to four-week period when adults emerge simultaneously in massive numbers. With few exceptions, at any given location, all the periodical cicadas share the same life cycle and emerge on the same schedule, forming a single year class referred to as a “brood.” Surprisingly, each brood consists of multiple species from three species groups (Decim, Cassini, Decula).

These three groups were considered to have diverged from each other allopatrically and to have later become sympatric and formed 13- and 17-year life cycles (2). The prolonged, prime-numbered life cycles were hypothesized to have evolved in response to Pleistocene climatic cooling (9,11) to avoid the adverse effect of low population density on mating success (9,12,13). Another view hypothesized that the long synchronized life cycles evolved in association with the predator avoidance strategy (2,4,8) and that this took place prior to both the glacial periods and the split of the three species groups (10) based on approximate genetic distances among species groups (8). To test these hypotheses, phylogenetic information about the relationships of species, broods, and populations is essential. However, phylogenetic studies of *Magicicada* have been largely limited to the Decim group (6,14-18), and only rough divergence times among species have been inferred (8,10). Thus, a comprehensive molecular phylogeny covering all the extant broods, their phylogeography and divergence time has been lacking until now.

We conducted molecular phylogenetic and population genetic analyses using nuclear and mitochondrial DNA markers for samples collected over a thirty-year period (1978–2008). These samples represent all 15 extant broods and all known species (Table S1).

Results and discussion

Phylogenetic analyses and divergence time estimation based on four nuclear and three mitochondrial genes (Table S2) clearly reveal the monophyly of each of the three species

groups (Decim, Cassini and Decula) and the sister relationship between Cassini and Decula (Fig. 1). A Bayesian relaxed clock analysis shows that the three species groups diverged 3.9 million years ago (mya). Initially the Decim group diverged from the ancestor of Cassini + Decula, then Cassini and Decula separated 2.5 mya (Fig. 1). The mitochondrial gene genealogy further shows divergence associated with regions, and partly with life cycles (Fig. 2, Figs. S1 and S2 and Table S3). We distinguished four mitochondrial haplotype groups in Decim, and three each in Cassini and Decula (Fig. 2A-C). The geographic distributions of mitochondrial haplotype groups within each species group show similar divisions among eastern, middle and western regions (Fig. 2D-F). In Decim, there is also a major divergence between northern and southern groups corresponding to formally distinguished mitochondrial lineages A and B, respectively (15). Group A is divided into three groups, Ae, Am, and Aw, which occur in the eastern, middle and western parts of the US east of Great Plains, respectively. Populations of Ae and Am exhibit a 17-year cycle (*M. septendecim*); those of Aw both 17-year (*M. septendecim*) and 13-year (*M. neotredecim*) cycles, and those of B show only a 13-year cycle (*M. tredecim*). At the boundary of Ae and Am, a few populations possess both Ae and Am haplotypes. The Cassini group consists of three haplotype groups, Ce, Cm and Cw, again occurring in the eastern, middle and western regions, respectively (Fig. 2). Populations with Ce and Cm show 17-year cycles only (*M. cassini*), whereas those of Cw show both 17- and 13-year cycles (*M. cassini* and *M. tredecassini*, respectively). Lastly, the Decula group shows the least divergence of mitochondrial haplotypes, but yet there are differences in haplotype among the eastern (De), middle (Dm) and western (Dw) regions (Fig. 2). Each haplotype group is associated with both 17- and 13-year cycles (*M. septendecula* and *M. tredecula*, respectively), suggesting that life-cycle divergence occurred independently in the three regions.

The boundaries of haplotype groups roughly coincide among the three species groups (Fig. 2D-F). In each species group, an isolation-by-distance pattern was detected by a Mantel test (Decim, Mantel's $r = 0.223$, $P = 0.0007$; Cassini, $r = 0.349$, $P = 0.0001$; Decula, $r = 0.377$, $P = 0.0001$), suggesting that contiguous range expansion resulted in the present distribution. Parts of broods of each species group were associated with two or three

haplotype groups and occurred in different geographic regions, suggesting multiple origins of the same broods even within a single species (Fig. 2; Fig. S2). In Decim, brood VI, IX, X and XIV are found in Ae and Am, and brood XIX and XXIII in Aw and B. In Cassini, brood V and IX are found in Ce and Cm, and brood X and XIV in Ce, Cm and Cw. In Decula, brood V and XIV are found in De and Dm, brood VI and XXIII in De and Dw, and brood XIX in De, Dm and Dw. Thus, the broods of multiple lineages are shared among the three species groups and show similar geographic patterns. The divergence pattern of the two life cycles differs among the three species groups in relation to haplotype groups (Fig. 2). Although genetic differentiation between 13-year *M. tredecim* and 17-year *M. septendecim* in Decim are evident, naturally, because these belong to different haplotype groups (Table S4; AMOVA), significant differentiation between 13-year *M. neotredecim* and 17-year *M. septendecim* within the haplotype group Aw was also detected by an AMOVA (Table S4; $F_{CT} = 0.234$; $df = 1$, $P < 0.001$). However, there was not significant differentiation between 13- and 17-year cicadas in Cassini haplotype group Cw or in the whole Decula group (Table S4; Cassini Cw: $F_{CT} = 0.068$, $df = 1$, $P > 0.05$; Decula: $F_{CT} = -0.039$, $df = 1$, $P > 0.05$).

The analysis of amplified fragment length polymorphism (AFLP) markers show results generally consistent with the mitochondrial data results (Fig. 3). Each species group showed a significant differentiation in terms of the fixation index among groups defined by life cycle and regions associated with mitochondrial haplotype groups (Decim, $F_{st} = 0.0241$, $P = 0.0000$; Cassini, $F_{st} = 0.0099$, $P = 0.0000$; Decula, $F_{st} = 0.0109$, $P = 0.0040$). In Decim, the 13-year *M. tredecim* (haplotype group B) was significantly differentiated from other groups as indicated by pairwise F_{st} values, whereas another 13-year group *M. neotredecim* (haplotype group Aw) and 17-year *M. septendecim* groups were not differentiated from one another except for one case (Fig. 3). In Cassini, the closest relationship between 13-year *M. tredecassini* and 17-year *M. cassini* within the haplotype group Cw was revealed (Fig. 3). In Decula, the six groups divided by life-cycle and haplotype group showed relationships different from those inferred using mitochondrial data; 13-year *M. tredecula* in haplotype groups De and Dm were closely related to each other, as were 17-year *M. septendecula* in

these haplotype groups (Fig. 3). Note, however, that haplotype groups De and Dm show only 1-bp difference in the mitochondrial sequence (Fig. 2C).

The estimated age using a Bayesian relaxed clock analysis of the most recent common ancestor (MRCA) of all Decim mitochondrial haplotypes is 0.53 mya, after which time it separated into clades A (Ae+Am+Aw) and B (Fig. 1). The MRCA of each haplotype group is more recent (0.16—0.08 mya). The MRCA of the Decim Aw group containing 13-year (*M. neotredicim*) and 17-year (*M. septendecim*) cicadas is 0.12 mya (Fig. 1). In the Cassini group, the MRCA of all mitochondrial haplotype groups is traced back to 0.32 mya, and the MRCA of Cw back to 0.16 mya. Lastly, mitochondrial haplotypes of the Decula group had their MRCA 0.23 mya. The divergence time of 13- and 17-year cicadas within the same mitochondrial lineage was estimated together with the gene flow between them using the isolation-with-migration approach (Fig. 4; Fig. S3). In Cassini Cw, divergence time was approximately 23 thousand years ago (kya), whereas in Decim Aw, divergence time was approximately 10 kya. In Decula, the divergence time was not clearly estimated (close to zero) due to the lack of haplotype differences between *M. septendecula* and *M. tredecula*, so their life-cycle divergence must have occurred quite recently.

The Bayesian Skyline Plot based on mitochondrial gene sequence data (Fig. 5) as well as that based on both mitochondrial and nuclear gene sequence data (Fig. S4) revealed that the population sizes of both the Decim and the Cassini groups were relatively small during the last glacial period, probably due to a population bottleneck, but increased markedly after 10,000 years ago following the abrupt rise of temperature in the Holocene (19). By contrast, there was no increase in population size for the Decula group. This difference in the demographic history corresponds with the fact that except in some southern populations, today Decula is generally rare, compared to Decim and Cassini (8).

Our results are broadly consistent with the previous idea that an ancestor of all *Magiccicada* diverged into three species allopatrically, and later, the three became sympatric and each species independently diverged into 13- and 17-year cicadas (2). Surprisingly, however, the divergence of 13- and 17-year cicadas was asynchronous among the species groups and occurred repeatedly even within a species group. This finding is all the more

interesting given that each species group shows similar eastern, middle and western phylogeographic divisions (Fig. 2) similar to post-Pleistocene patterns observed in other North American taxa (20), suggesting that the three *Magicicada* groups shared multiple refugia during the last glacial maximum. The Decim group showed the deepest (0.53 mya; middle Pleistocene) divergence in extant haplotype groups between north and south (i.e., Ae+Am+Aw vs. B). Meanwhile, the divergence between 13- and 17-year cicadas in Decim Aw, Cassini Cw and Decula occurred during or after the last glacial maximum (< 23 kya), possibly following population bottlenecks, suggesting that the life-cycle divergence in *Magicicada* is closely associated with global climatic fluctuations and shorter growing seasons in the north versus the south. The divergences into the present 13- and 17-year cicadas have occurred since the middle Pleistocene when climatic fluctuation became prominent (19), consistent with the glacial-period-origin hypothesis of the life cycles (9,11). However, the splits into species groups date to the Pliocene, suggesting that the origin of the life cycles was not directly related to the onset of the Pleistocene glacial period given our reasoning below (10).

We suggest that the recent, repeated life-cycle divergences are caused by shifts between the alternative life cycles. We further suggest that the genetic basis of these life cycles and shifts is the same in each species group because it is unlikely that the same regulatory system evolved three times. The origin of *M. neotreddecim* has been proposed to be a recent life-cycle shift of *M. septendecim* from a 17-year to a 13-year cycle by genetic assimilation of life-cycle plasticity, perhaps facilitated by other 13-year cicada “nurse broods” that protected them from predation (4,17,21). The plasticity of *Magicicada* life cycle length has been suggested based on records of off-schedule emergences (22). Supporting the nurse brood model is the fact that *M. neotreddecim* is found in two of three extant 13-year cicada broods, XIX and XXIII with broad ranges, but not in XXII with a narrow range far away from the range of *M. neotreddecim*. Thus, the origin of *M. neotreddecim* may have involved some influence by pre-existing 13-year broods XIX and XXIII. Introgressive hybridization between *M. septendecim* and *M. treddecim* (23,24) has also been proposed to explain the origin of *M. neotreddecim*. Our results corroborate the

previously reported genetic closeness of *M. neotredecim* to *M. septendecim* and not to *M. tredecim* (15-18), more consistent with the plasticity/nurse-brood model (but see ref. 25 for the theoretical possibility of the introgressive hybridization model). In the Cassini and the Decula groups, the hybridization hypothesis cannot be applied because there is no evidence of secondary contact between cicadas with different life cycles of the same species group. These species group may have been monotypic (either 13- or 17-year) at the beginning of the last glacial period and may have changed their life cycles to match those of pre-existing “nurse-brood” populations (e.g., of Decim) with which they became sympatric. Natural selection would have promoted synchronization of invading populations to resident populations because invaders would gain protection from predation (2,4,8) and consequently avoid Allee effects (failure to reproduce due to low population density) (9). The repeated shifts between the two prime-numbered life cycles in all three *Magicicada* species groups suggests a common genetic basis that evolved prior to the origin of the species groups, 3.9 Ma. Our results support the idea that life-cycle plasticity has been a creative force in the evolution of *Magicicada* (26). However, the regulatory system of *Magicicada* life cycles and the mechanism of putative life-cycle shift are completely unknown and require future comparative genomic studies of 13- and 17-year periodical cicadas.

Materials and Methods

Sampling. Adults of *Magicicada* were collected from 27 states of the USA from 1978 to 2008 (Table S1) and stored in freezers. Total genomic DNA was extracted from leg muscles of each ethanol fixed specimen using the Wizard® Genomic DNA Purification Kit (Promega, Madison WI). For Decim, Cassini and Decula, 332, 238 and 165 individuals, respectively, were used. Specimens are kept in the Department of Zoology, Kyoto University as vouchers and for future analyses of DNA. We used the sister genera of

Magicicada (27) as outgroup taxa; specifically, *Tryella crassa*, *T. graminea*, *T. burnsi*, *Aleeta curvicosta*, and *A. curvicosta*.

Gene sequence analysis. We sequenced partial gene regions of nuclear 18S rRNA (*18S*; 808-bp sequence), wingless (*Wg*; 376-bp exon sequence) and Elongation Factor 1-alpha (*EF1-a*; 1302—1303-bp for *Magicicada*; 1270—1616 bp exon and intron for the outgroup) and Calmodulin (*Cal*; 385—394-bp intron sequence) gene and a 1832-bp mitochondrial DNA region encompassing partial sequences of cytochrome oxidase subunit I and II genes (*COI*, *COII*) and a sequence of *tRNA (Leu)* in between. Primers used for PCR-amplification and direct sequencing are given in Table S2. Direct sequencing of PCR products used an ABI3130xl sequencer (Applied Biosystems). When sequence data for the *COI-II* sequence were affected by putative nuclear mitochondrial DNA (numt), we used specific internal primers (Table S2). Samples of each species group representing different broods and regions were sequenced for all gene regions. The samples consisted of 25 from the Decim group, 18 from the Cassini group and 19 from the Decula group. Two outgroup specimens (*Tryella crassa* and *Aleeta curvicosta*) were also sequenced. For the mitochondrial DNA, sequences were obtained for 329, 238 and 165 specimens of Decim, Cassini and Decula, respectively (Table S1). All nuclear gene sequences and all mitochondrial haplotype sequences detected have been deposited in DDBJ database (accession numbers; *18S*, AB740543—AB740606; *Cal*, AB740607—AB740670; *EF1-a*, AB740671—AB740734; *Wg*, AB740735—AB740798; *COI-II*, AB740799—AB740917; see also Table S3 for *COI-II* haplotypes).

Phylogenetic analysis. We conducted a simultaneous analysis of five gene sequences with 64 operational taxonomic units (OTUs) using an optimal data-partitioning scheme (28). The nuclear gene sequence data was divided into 9 subsets: *18S*, *Cal* (intron), four of *EF1-a* (1st, 2nd, 3rd position and intron), and three codon positions of *Wg*. Mitochondrial gene sequence data was divided into 7 subsets: three codon positions of *COI*; *tRNA*; three codon positions of *COII*. These 16 subsets were used in a heuristic search to identify the best

partitioning scheme and evolutionary model for each partition according to the Bayesian Information Criterion (BIC) using the program PartitionFinder version 1.0.1 (28). The best scheme consisted of six partitions: (1) *18S* + *EF1-a* 2nd + *Wg* 2nd (substitution model: JC [Jukes-Cantor]); (2) *COI* 1st + *tRNA(Leu)* + *COII* 1st + *Cal* + *EF1-a* intron (HKY [Hasegawa-Kishino-Yano] +G); (3) *Wg* 3rd (TVM [transversion model] +G); (4) *EF1-a* 1st + *Wg* 1st (F81 [Felsenstein 1981]); (5) *COI* 2nd + *COII* 2nd + *EF1-a* 3rd (HKY + I); and (6) *COI* 3rd + *COII* 3rd (HKY + I). For mitochondrial gene sequences, a larger data set with 119 OTUs (114 unique sequences of *Magisicada* and 5 outgroup sequences) was analyzed. The optimal partitioning scheme consisted of three partitions: (1) *COI* 1st + *tRNA(Leu)* + *COII* 1st (TrN [Tamura-Nei] +G); (2) *COI* 2nd + *COII* 2nd (TrN+I); and (3) *COI* 3rd + *COII* 3rd (TrN+I). For each sequence data set, a partitioned maximum-likelihood analysis was conducted by using Treefinder ver. October 2008 (29). Bootstrapping analysis with 1000 replications was performed also using Treefinder using the ML tree as the starting tree.

Haplotype network and population genetic analyses of mitochondrial gene sequences.

The relationships among mitochondrial haplotypes were assessed by constructing statistical parsimony networks with a 95% connection limit using TCS version 1.21 (30). Haplotype groups within each species group were assigned based on monophyly or the segregation from other groups with two or more missing haplotypes. Mantel tests for the isolation-by-distance trend in pairwise genetic distance between populations were conducted using the R-package (31). Analyses of molecular variance (AMOVA) for genetic differentiation by haplotype groups, broods, and life cycles were performed using Arlequin ver. 3.11 (32).

Divergence time estimation. Estimation of divergence times was conducted with all nuclear and mitochondrial DNA sequence data using BEAST ver. 1.7.2 (33). No fossil or geographic evidence for calibrating nodes is available for the *Magisicada* phylogeny. Therefore, we attempt to determine a plausible range of age for the node of the most recent

common ancestor (MRCA) of *Magivicada* using a recently proposed evolutionary rate for insect mitochondrial genes (ref. 34: Figure 3), which was estimated by compiling sequence divergence rates at various time spans based on sequence divergence corrected for rate heterogeneity among sites using a gamma distribution and fitting them to a time-dependent rate equation (35): rate of sequence divergence (%) per million year = $17.256 \exp[-1.157t] + 2.0968$. We can estimate divergence time for a given sequence divergence with this rate by using equation 7 in ref. 35, which relates sequence divergence to divergence time. For the mitochondrial sequences of *Magivicada*, the optimal substitution model was GTR+G based on the Akaike's Information Criterion according to MrModeltest ver. 2.3 (36). To determine the node age for the MRCA of *Magivicada*, the GTR+G corrected sequence divergence between Decim and Cassini + Decula, 0.2351 (SD = 0.0223), was converted to 4.16 million years by using the above time-dependent sequence divergence rate. In divergence time estimation with BEAST, the node age prior was set as a normal distribution function with mean = 4.16 and SD = 0.3943 (proportional to original SD). Ref. 34 also provides another time dependent clock based on uncorrected P sequence divergence from different data sets. Using this clock equation and an uncorrected sequence divergence of 0.0844 ± 0.0034 (SD) for *Magivicada* MRCA, we obtain 3.57 ± 0.1442 mya. Because this alternative estimate is well included in the range (3.4—4.9 mya for 95% HPD interval) of the previous estimate (assuming a normal distribution with mean = 4.16 and SD = 0.3943), our age prior included the age estimation based on a conservative substitution rate without accounting for rate heterogeneity among sites. In the BEAST analysis, data partitioning and substitution models followed the previous phylogenetic analysis. Both substitution model and clock model were unlinked among partitions, but the tree was linked. We tested runs with the strict clock model and the uncorrelated lognormal (ULN) relaxed-clock model, and compared these by Bayes factor (BF) for marginal likelihood using TRACER ver. 1.5 after the runs. The BEAST MCMC run was conducted for 100 million generations sampling every 10,000th generation. The initial 1 million generations were discarded as burn-in when we obtained the maximum clade credibility tree. Based on BF, we selected ULN relaxed-clock model.

AFLP analysis. Amplified fragment length polymorphism (AFLP) analysis (37) was performed for 237, 95 and 96 specimens of Decim, Cassini and Decula, respectively, encompassing all broods from each species group (Table S1). We used a plant mapping kit (Applied Biosystems) and six primer combinations for selective amplification (EcoRI + /MseI +: ACT/CTG, AGG/CAC, AGC/CAT, ACA/CAC, AGG/CTA and ACC/CAT). The amplified fragments were electrophoresed on an ABI 3130xl sequencer and binary-coded using GeneMapper ver. 4.0 (Applied Biosystems). To ensure high reliability of analyzed AFLP loci, every specimen was genotyped twice, and a total of 440 loci with >90% repeatability was used in the analysis. The differentiation in AFLP loci among groups defined by life cycle and regions associated with mitochondrial haplotype groups within each species group was assessed using pairwise F_{st} using AFLP-surv ver. 1.0 (38). The significance of F_{st} was assessed by 1000 permutations. We controlled the false positive rate using the B-H method (39) to determine statistical significance of multiple pairwise F_{st} values between groups. We also obtained pairwise Nei's distances between groups and 1000 bootstrap distance matrices using AFLP-surv. We constructed neighbor-joining trees and a bootstrap consensus tree using PHYLIP ver. 3.69 (40).

Divergence and gene flow between 13- and 17-year cicadas. We applied the isolation-with-migration approach (41) using the IMA2 program (42) to explore the divergence time between 13- and 17-year cicadas within the same mitochondrial lineage, i.e., those in Aw of Decim (*M. septendecim* and *M. neotredecim*), those in Cw of Cassini (*M. cassini* and *M. tredecassini*), and those in the whole Decula (*M. septendecula* and *M. tredecula*). The whole mitochondrial sequence (1832 bp) was treated as one locus. For each group, we attempted 7 to 12 runs to find the appropriate priors of t (time of population splitting), q (effective population size), and m (migration rate), with 10^4 or 10^5 burn-in generations and 10^4 to 10^6 post burn-in generations. The mutation rate of the mitochondrial locus was set to 2.9×10^{-7} per locus per year based on the substitution rate 0.016/site/my estimated in a BEAST analysis with the entire mitochondrial sequence data (see below).

Demographic history. To explore the demographic history of each species group, we applied the Bayesian Skyline Plot (BSP) analysis (43) with the mitochondrial *COI-II* sequence data using programs BEAST ver. 1.6.2 and TRACER ver. 1.5. Sequence data sets were prepared for Decim ($n=329$), Cassini ($n=238$) and Decula ($n=165$). The whole mitochondrial sequence (1832 bp) was treated as one locus. For each data set, the BEAST run was conducted for 10^8 generations sampling every 5000th generation. Substitution models selected by MrModeltest ver. 2.3 were HKY+I for Decim and Cassini data sets, and HKY for Decula data set. A strict clock model was employed using a clock rate of 0.016, which was estimated in a BEAST analysis for the entire mitochondrial data set also with a strict clock model and a *Magiicada* MRCA node age prior of the normal distribution with mean 4.16 mya and SD = 0.3943 mya (10^8 generations with sampling every 10^4 th generation; 10^6 burn-in generations). After the BEAST skyline plot analysis, effective population size through time was reconstructed using TRACER ver. 1.5, discarding initial 10^7 generations as burn-in. We also conducted an extended Bayesian Skyline Plot (EBSP) analysis (44) using BEAST ver. 1.7.2 using *Cal*, *EF1-a* and *Wg* for Decim, *EF1-a* and *Wg* for Cassini, and *Cal* and *EF1-a* for Decula, in addition to *COI-II* data, excluding nuclear genes which showed no intra-species group sequence difference. The number of sequences for each species group was 25, 18 and 19 for Decim, Cassini and Decula, respectively. Because sequence difference in each nuclear gene was fairly small, nuclear gene trees were linked, and in Cassini, substitution and clock models were linked between the two nuclear genes. Substitution models selected by MrModeltest ver. 2.3 were HKY+G for *COI-II*, HKY for *Cal*, and GTR+I for *EF1-a* and *Wg*. A strict-clock model was used for each gene partition, and the clock rate of 0.016 was applied to *COI-II* gene as in the previous BSP analysis. For each species group, the BEAST run was conducted for 50 million generations sampling every 5000th generation. Effective population size through time was reconstructed using TRACER ver. 1.5, discarding initial 5 million generations as burn-in.

ACKNOWLEDGMENTS We thank David Marshall for help with field work and comments on phylogenetic methods. Many other people helped collect *Magicicada* specimens over the 30-year period and have been acknowledged in previous Simon Lab publications. This study was supported by Japan Society for Promotion of Science Grants-in-Aid 22255004 and 22370010 (to JY) and 23128507 (to TS); Ministry of Education, Culture, Sports, Science and Technology (the Global COE program A06), Japan; and National Science Foundation Division of Environmental Biology Grants 8411083, 8509164, 9196213, 9812779, 9807113, 9982039, 0720664 and 0955849 (to CS).

1. Marlatt CL (1907) The periodical cicada. *USDA Bureau Entomol Bull* 71: 1-183.
2. Alexander RD, Moore TE (1962) The evolutionary relationships of 17-year and 13-year cicadas, and three new species (Homoptera, Cicadidae, *Magicicada*). *Misc Pub Mus Zool Univ Michigan* 121: 1-59.
3. Lloyd M, Dybas HS (1966) The periodical cicada problem I. Population ecology. *Evolution* 20: 133-149.
4. Lloyd M, Dybas HS (1966) The periodical cicada problem. II. Evolution. *Evolution* 20: 466-505.
5. May RM (1979) Periodical cicadas. *Nature* 277: 347-349.
6. Simon C (1988) Evolution of 13- and 17-year periodical cicadas (Homoptera: Cicadidae: *Magicicada*). *Bull Entomol Soc Am* 34: 163-176.
7. Hellövaara K, Väisänen R, Simon C (1994) Evolutionary ecology of periodical insects. *Trends Ecol Evol* 9: 475-480.
8. Williams KS, Simon C (1995) The ecology, behavior, and evolution of periodical cicadas. *Annu Rev Entomol* 40: 269-95.
9. Yoshimura J (1997) The evolutionary origins of periodical cicadas during ice ages. *Am Nat* 149: 112-124.
10. Grant PR (2005) The priming of periodical cicada life cycles. *Trends Ecol Evol* 20: 169-174.

11. Cox RT, Carton CE (1988) Pleoclimatic influences in the evolution of periodical cicadas (Insecta: Homoptera: Cicadidae: *Magicicada* spp.). *Am Midl Nat* 120: 183-193.
12. Yoshimura J, *et al.* (2008) Selection for prime-number intervals in a numerical model of periodical cicada evolution. *Evolution* 63: 288-294.
13. Tanaka Y, *et al.* (2009) Allee effect in the selection for prime-numbered cycles in periodical cicadas. *Proc Nat Acad Sci USA* 106: 8975-8979.
14. Simon C (1979) Evolution of periodical cicadas: phylogenetic inferences based on allozymic data. *Syst Zool* 28: 22-39.
15. Martin AP, Simon C (1988) Anomalous distribution of mitochondrial and nuclear gene markers in periodical cicadas. *Nature* 336: 247-249.
16. Martin A, Simon C (1990) Differing levels of among-population divergence in the mitochondrial DNA of periodical cicadas related to historical biogeography. *Evolution* 44: 1066-1080.
17. Simon C, *et al.* (2000) Genetic evidence for assortative mating between 13-year cicadas and sympatric “17-year cicadas with 13-year life cycles” provides support for allochronic speciation. *Evolution* 54: 1326-1336.
18. Cooley JR, *et al.* (2001) Allochronic speciation, secondary contact, and reproductive character displacement in periodical cicadas (Hemiptera: *Magicicada* spp.): genetic, morphological, and behavioural evidence. *Mol Ecol* 10: 661-671.
19. Petit JR, *et al.* (1999) Climate and atmospheric history of the past 420,000 years from the Vostok ice core, Antarctica. *Nature* 399: 429-436.
20. Soltis DE, *et al.* (2006) Comparative phylogeography of unglaciated eastern North America. *Mol Ecol* 15: 4261-4293.
21. Marshall DC, Cooley JR (2000) Reproductive character displacement and speciation in periodical cicadas, with description of a new species, 13-year *Magicicada neotredecim*. *Evolution* 54: 1313-1325.

22. Marshall DC, Cooley JR, Hill BR (2011) Developmental plasticity of life-cycle length in thirteen-year periodical cicadas (Hemiptera: Cicadidae). *Ann Entomol Soc Am* 104: 443-450.
23. Cox RT, Carton CE (1991) Evidence for genetic dominance of the 13-year life cycle in periodical cicadas (Homoptera: Cicadidae: *Maigicicada* spp.). *Am Midl Nat* 125: 63-74.
24. Cox RT, Carlton CE (2003) A comment on gene introgression versus en masse life cycle switching in the evolution of 13-year and 17-year life cycles in periodical cicadas. *Evolution* 57: 428-432.
25. Nariai Y, *et al.* (2011) Life cycle replacement by gene introduction under an Allee effect in periodical cicadas. *Plos One* 6: e18347.
26. West-Eberhard MJ (2003) *Developmental Plasticity and Evolution*. (Oxford University Press).
27. Moulds MS (2005) An appraisal of the higher classification of cicadas (Hemiptera: Cicadoidea) with special reference to the Australian fauna. *Records Austral Mus* 57: 375-446.
28. Lanfear R, Calcott B, Ho SYW, Guindon S (2012) PartitionFinder: combined selection of partitioning schemes and substitution models for phylogenetic analysis. *Mol Biol Evol* 29: 1695-1701.
29. Jobb G, von Haeseler A, Strimmer K (2004) TREEFINDER: a powerful graphical analysis environment for molecular phylogenetics. *BMC Evol Biol* 4: 18.
30. Clement M, Posada D, Crandall KA (2000) TCS: a computer program to estimate gene genealogies. *Mol Ecol* 9: 1657-1660.
31. Casgrain P, Legendre P (2004) *The R-package for multivariate and spatial analysis v. 4.0 5d-user's manual* (Department Des Sciences Biologiques, Universite de Montreal).
32. Excoffier L, Laval LG, Schneider S (2005) ARLEQUIN v. 3.0: an integrated software package for population genetics data analysis. *Evol Bioinform Online* 1: 47-50.

33. Drummond AJ, Rambaut A (2007) BEAST: Bayesian evolutionary analysis by sampling trees. *BMC Evol Biol* 7: 214.
34. Papadopoulou A, Anastasiou I, Vogler AP (2009) Revisiting the insect mitochondrial molecular clock: the Mid-Aegean Trench calibration *Mol Biol Evol* 27: 1659–1672.
35. Ho SYW, Phillips MJ, Cooper A, Drummond AJ (2005) Time dependency of molecular rate estimates and systematic overestimation of recent divergence times. *Mol Biol Evol* 22:1561-1568.
36. Nylander JAA (2004) *MrModeltest v2*. (Evolutionary Biology Centre, Uppsala University, Uppsala).
37. Vos P, *et al.* (1995) AFLP: a new technique for DNA fingerprinting. *Nucleic Acids Res* 23: 4407-4414.
38. Vekemans X (2002) *AFLP-SURV version 1.0*. (Laboratoire de Génétique et Ecologie Végétale, Université Libre de Bruxelles, Belgium).
39. Benjamini Y, Hochberg Y (1995) Controlling the false discovery rate: a practical and powerful approach to multiple testing. *J Roy Stat Soc B (Methodol)* 57: 289–300.
40. Felsenstein J (1989) PHYLIP - phylogeny inference package (Version 3.2). *Cladistics* 5: 164-166.
41. Nielsen R, Wakeley J (2001) Distinguishing migration from isolation. A Markov chain Monte Carlo approach. *Genetics* 158: 885-896.
42. Hey J (2011) *Documentation for IMA2* (Department of Genetics, Rutgers University, New Brunswick).
43. Drummond AJ, Rambaut A, Shapiro A, Pybus OG (2005) Bayesian coalescent inference of past population dynamics from molecular sequences. *Mol Biol Evol* 22: 1185-1192.
44. Heled J, Drummond AJ (2008) Bayesian inference of population size history from multiple loci. *BMC Evol Biol* 8: 289.

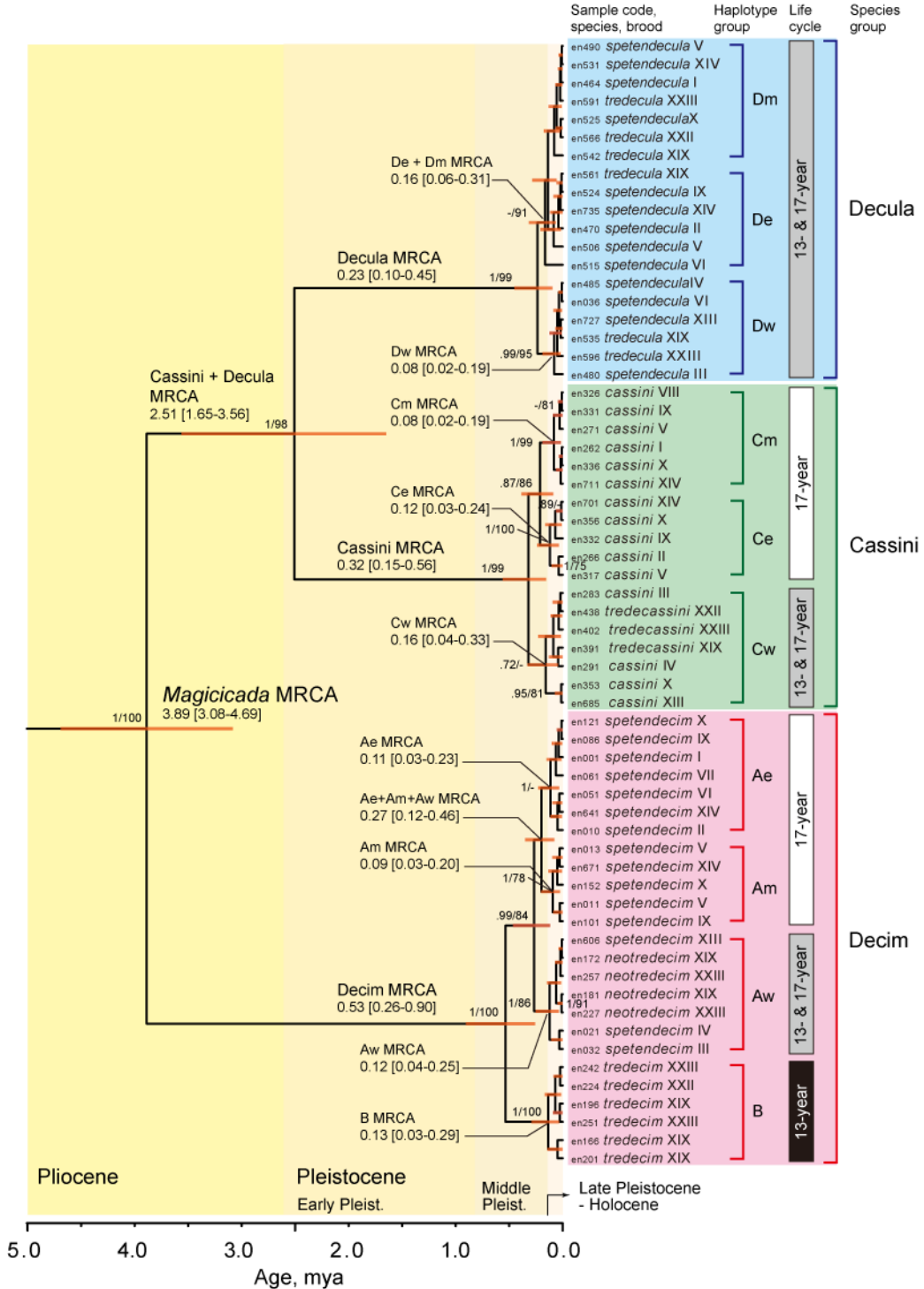


Fig. 1. Phylogeny and divergence times of *Magicicada* resulting from a Bayesian relaxed clock analysis with nuclear and mitochondrial data showing different histories of divergence into 13- and 17-year species among the three species groups. Outgroup taxa are not shown. Bars show 95% highest probability density (HPD) intervals of estimated divergence times. For major nodes divergence times and 95% HPD intervals in brackets are described. Node supports are posterior probabilities of the Bayesian inference and bootstrap percentages in a maximum-likelihood analysis (shown when >0.70 or >70%). The label for each OTU describes the sample code (Table S1), species and brood number. Mitochondrial haplotype groups (Fig. 2) of samples are also shown.

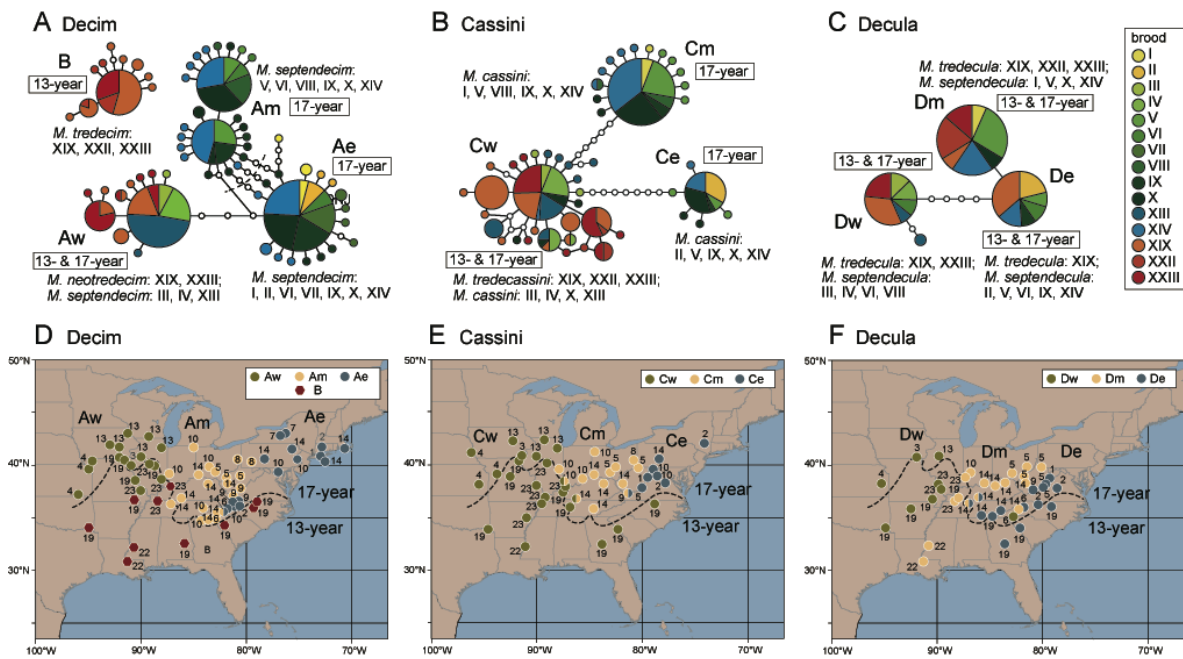


Fig. 2. Mitochondrial haplotype networks for each species group (*A-C*) showing different patterns of haplotype sharing between 13- and 17-year species. Each circle represents a unique haplotype, where size is proportional to sample size. Lines represent one-bp differences, and open circles represent missing haplotypes not appearing in the samples. The composition (relative sample sizes) of broods is shown as a pie chart, in which broods are distinguished by different colors. Geographic distribution of haplotype groups (distinguished by the color of the circle) in each species group (*D-F*) showing similar phylogeographic divisions. Brood numbers are indicated by Arabic numerals beside the circles. Dotted lines indicate the boundary of 13- and 17-year life cycles. Colors in *A-C* do not correspond to colors in *D-F*.

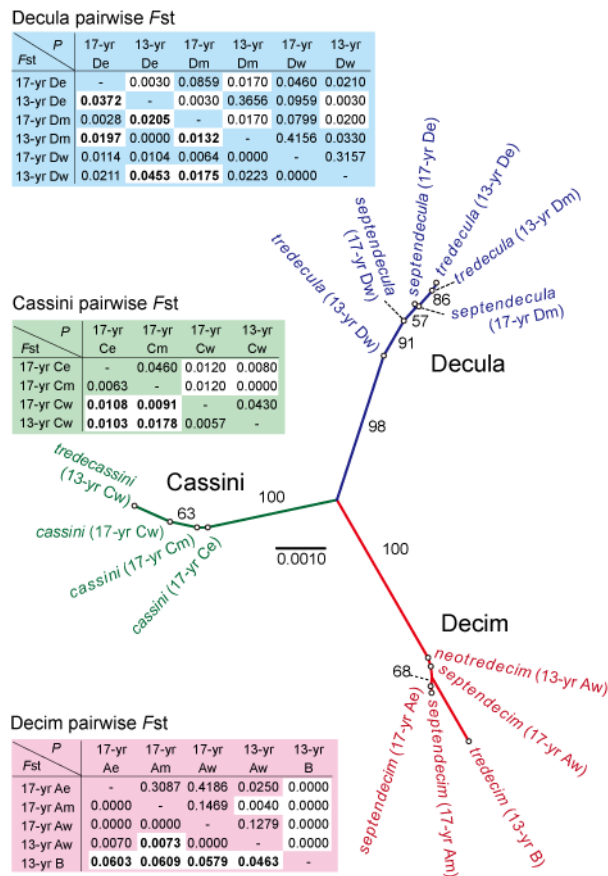


Fig. 3. Differentiation in AFLP loci among groups defined by life cycle and mitochondrial haplotype group (geographic region). The relationships among groups are depicted by the unrooted neighbor-joining tree based on pairwise Nei's distances. Node supports are bootstrap percentages (shown when >50%). Pairwise F_{st} and P values among groups in each species group are given in inset tables. F_{st} values in bold letters are significant at $\alpha = 0.05$ after controlling for the false-positive rate.

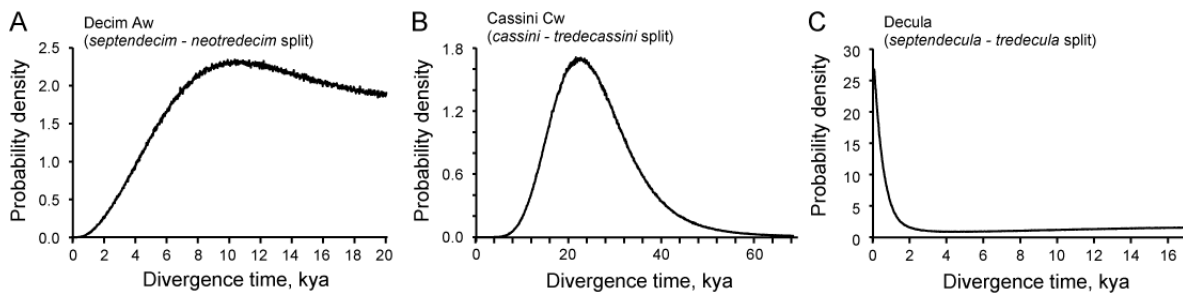


Fig. 4. Divergence times between 17- and 13-year cicadas in three groups inferred by the isolation-with-migration approach. *A*, between *M. septendecim* and *M. neotredecim* in Decim Aw; *B*, between *M. cassini* and *M. tredecassini* in Cassini Cw; *C*, between *M. tredecula* and *M. septendecula* in Decula.

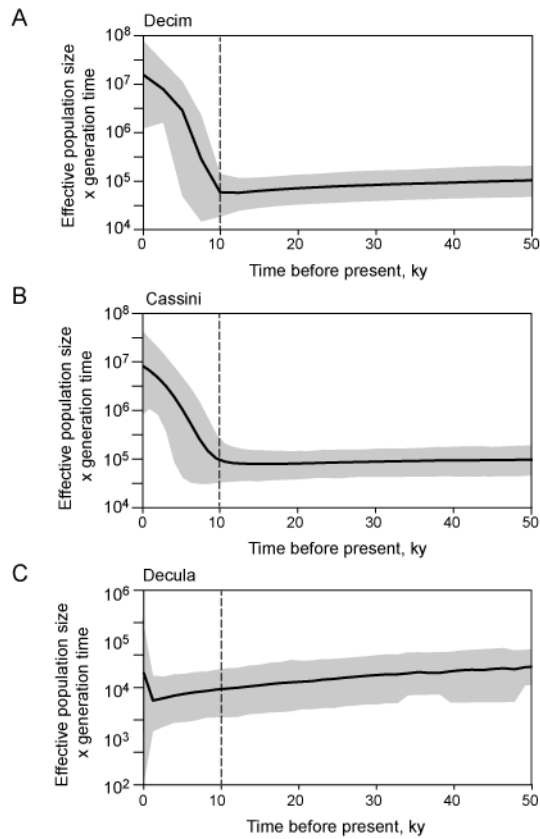


Fig. 5. Bayesian Skyline Plots showing demographic histories of the three *Magicicada* species groups, Decim (A), Cassini (B), and Decula (C) based on mitochondrial gene sequence data. Thick solid curves indicate mean effective population sizes, and gray areas the 95% highest probability density (HPD) limits. Dotted lines indicate the beginning of the Holocene (elevated air temperatures).