

ON A NEW GENUS OF THE FAMILY OOCORYIDAE¹⁾²⁾

TOKUBEI KURODA

Zoological Institute, Kyoto University

and

TADASHIGE HABE

Amakusa Marine Biological Laboratory, Kyushu University

With 5 Text-figures

In 1907, DALL¹⁾ described *Galeodea leucodoma* based on the specimen collected by the "Albatross" from off Kagoshima, Japan, in 391 fathoms which was later figured in 1925.²⁾ Fortunately, this deep sea species has been recently rediscovered from Tosa Bay by Mr. Akibumi TERAMACHI who kindly placed the specimen containing the soft part at our disposal.

The dissection has revealed that this species should be transferred from the family Cassididae to the Oocoryidae by the following features: viz. the radula has a subquadrate central tooth bearing a triangular median cusp with several smaller lateral cusps on each side and the horn-shaped marginal teeth with a single cusp.

The shell of this species resembles somewhat *G. echinophora* (LINNÉ), the type species of *Galeodea* LINK, but differs in the short and less curved canal, without any crevices at the base behind the columellar reflection of lip. And the operculum is large enough, oblong and thick, dark brown, pointed behind, rounded in front; outer margin somewhat laminately erecting, forming a deep furrow on the inside of it; growth striae distinct; nucleus excentric, situated at the anterior three-fourths near the outer margin; subspiral.

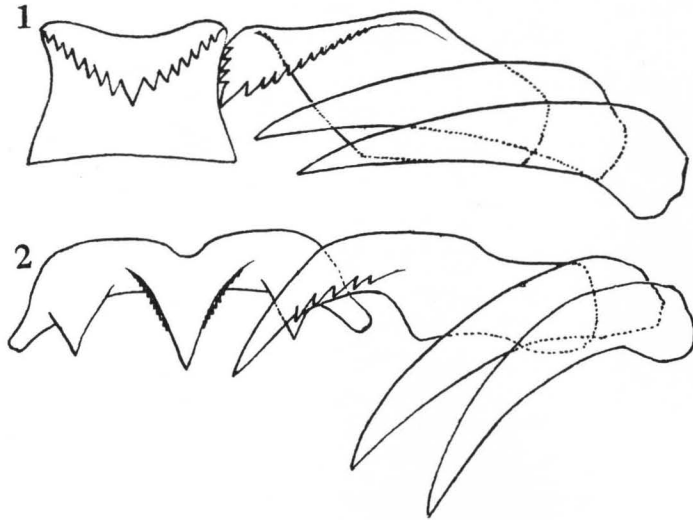
This species closely relates to *Oocorys caribbaea* CLENCH and AGUAYO from the West Indies in having the distinctly nodular spiral series, the number of which is less than those of the other species of *Oocorys* and the shell is sufficiently solid.

Therefore, a new generic name, *Galeoocorys* is here proposed, designating *Galeodea leucodoma* DALL as the type species. The other member of this new genus may be "*Morio*" *granulosa* SCHEPMAN³⁾ from Indonesian sea, which has finer series of nodules than our species.

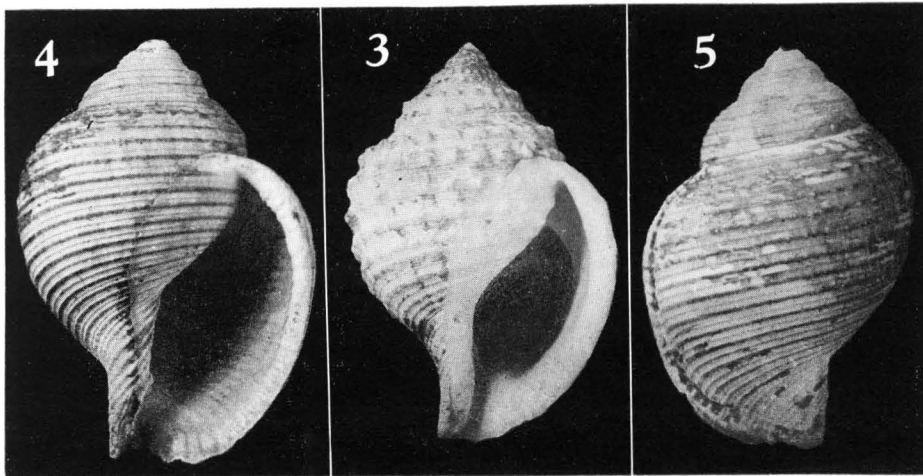
1) Contributions from the Seto Marine Biological Laboratory, No. 292.

2) Contributions from the Amakusa Marine Biological Laboratory (Kyushu University) No. 100.

On this occasion, we shall deal with a species of Japanese Tonnidae. In 1948, Dr. R. TURNER⁴⁾ pointed out the fact that the Japanese specimen figured by OSIMA⁵⁾ does not agree with *Eudolium lineatum* (SHEPMAN) which should be a member of



Figs. 1 & 2. Radulae: 1. *Galeocorys leucodoma* (DALL), 2. *Eudolium inflatum* KURODA et HABE.



Figs. 3-5. Shells: 3. *Galeocorys leucodoma* (DALL) (64 mm in height and 43 mm in breadth), 4 & 5. *Eudolium inflatum* KURODA et HABE (65 mm in height and 45.5 mm in breadth).

Oocoryidae, standing close to *Eudolium crosseanum* (MONTEROSATO) from the Atlantic. The Japanese species is a real *Eudolium* with the embryonic shell peculiar to *Macgillivrayia*, and we already discriminated it giving a new name, *Eudolium inflatum*.⁶⁾

The radula of this species bears a large median cusp with many minute lateral cusps on each side of it and a large basal cusp on each side of the central tooth. Therefore it belongs to the typical group of the genus *Eudolium*, but not to *Oocorys*, as stated by Dr. R. TURNER.

REFERENCES

- 1) Smithsonian Misc. Coll., **50**, 166 (1907).
- 2) Proc. U. S. Nat. Mus., **66** (17), 17, pl. 34, fig. 4 (1925).
- 3) Siboga Expeditie, **41** (1), Prosobranchia, p. 123, pl. 10, fig. 4 (*Morio granulata* in the explanatory text).
- 4) Johnsonia **2** (26), 176 (1948).
- 5) Conchologia Asiatica, **I**, 133, pl. 5, fig. 1 (1943).
- 6) Check List Bibliogr. Rec. Mar. Moll. Japan, 56 (1952).