

ORIGINAL ARTICLE

Open Access



Domain swapping of complementarity-determining region in nanobodies produced by *Pichia pastoris*

Natsuko Miura^{1,2,3}, Kana Miyamoto¹, Yuta Ohtani¹, Kenshi Yaginuma¹, Shunsuke Aburaya^{1,4}, Yoshinori Kitagawa¹, Wataru Aoki^{1,2,5} and Mitsuyoshi Ueda^{1,2,5*}

Abstract

Easy preparation of chimeric nanobodies with various scaffolds is important for customizing abilities of nanobodies toward practical utilization. To accomplish high-throughput production of various nanobodies, utilization of microbes is an attractive option. In the present study, various chimeric nanobodies were prepared using the methylotrophic yeast *Pichia pastoris*. We designed chimeric nanobodies with complementarity-determining regions (CDRs) against green fluorescent protein (GFP) or cluster of differentiation 4 (CD4) based on the scaffold of GFP-nanobody. FLAG-tagged chimeric nanobodies were prepared by one-step cloning and produced using *P. pastoris*. Secreted chimeric nanobodies were purified from the culture media of *P. pastoris* transformants. Relative binding abilities of purified chimeric nanobodies to GFP and CD4 was tested using a BIACORE T-200. *P. pastoris* successfully produced a high yield of FLAG-tagged chimeric nanobodies. FLAG-tagged GFP- and CD4-nanobodies were shown to specifically bind to GFP and CD4, respectively. Chimeric nanobodies, in which the CDR2 or 3 of GFP-nanobody was replaced with CDRs of CD4-nanobody, acquired the ability to bind to CD4 without binding to GFP. These results demonstrate successful production of functional chimeric nanobodies using *P. pastoris*. These results also suggest that swapping of CDRs, especially CDRs 2 or 3, potentially enables a novel method of creating nanobodies.

Keywords: CDR swapping, CD4 nanobody, GFP nanobody, Relative binding ability, *Pichia pastoris*

Introduction

The heavy chain domains of *Camelidae* sp. antibodies (Hamers-Casterman et al. 1993), or nanobodies, are increasingly attracting attention for their small size and ability to bind specifically to targets. The practical applications of nanobodies range from capturing certain molecules (Beghein and Gettemans 2017) to delivering molecules to targets in vivo (Hu et al. 2017), offering attractive tools for diagnostics (De Meyer et al. 2014; Hu et al. 2017) and therapeutics (Bannas et al. 2017; Hu et al. 2017). Nanobodies are also used in in vitro molecular studies, for example for isolating proteins and protein-associated molecules (Bannas et al. 2017).

Being single-domain antibodies, nanobodies are easily produced by in vitro methods (McMahon et al. 2018) or by various host cells including bacteriophages (Arbabi Ghahroudi et al. 1997; Pardon et al. 2014), *Escherichia coli* (Conrath et al. 2001; Pardon et al. 2014), yeast cells such as *Aspergillus* sp. (Joosten et al. 2005; Okazaki et al. 2012), *Saccharomyces cerevisiae* (Gorlani et al. 2012), and *Pichia pastoris* (Ezzine et al. 2012), in addition to mammalian cells (Agrawal et al. 2012; Zhang et al. 2009). According to comparison of different methods for producing nanobodies by Frenzel and De Meyer, optimized yield of nanobodies is generally similar among Gram-negative microbes, yeast cells, and mammalian cells (Frenzel et al. 2013; De Meyer et al. 2014). Mammalian production benefits that the produced nanobodies can have mammalian post-translational modifications (Palamares et al. 2004). Microbial production of recombinant proteins is easier to test (Ferrer-Miralles and Villaverde

*Correspondence: miueda@kais.kyoto-u.ac.jp

¹ Graduate School of Agriculture, Kyoto University, Kyoto 606-8502, Japan
Full list of author information is available at the end of the article

2013), and has been used for high-throughput screening of protein libraries (Boder and Wittrup 1997). Recently, yeast cells including the methylotrophic yeast *P. pastoris* have attracted increased attention as a host for nanobody production (Baghban et al. 2016; Pourasadi et al. 2017). In addition to being a microbe which allows high-throughput production, *P. pastoris* enables secretory production of recombinant proteins through folding control system of eukaryotic cells (Cereghino et al. 2002).

Various synthetic nanobodies have been reported through screening of nanobodies having random sequences. Phage display and cell surface display system enabled genotype–phenotype linking of nanobody libraries and thus enabled production and screening of large number of nanobodies (Galan et al. 2016; McMahon et al. 2018; Yan et al. 2014). Gu and colleagues reported in vitro production of DNA-barcoded nanobody library (Gu et al. 2014). In the method, random nanobody sequences are fused with random DNA barcodes and can be identified through concentration of barcodes with functional molecules followed by next-generation sequencing (NGS) analysis (Gu et al. 2014). Recently, production of peptide-barcoded nanobodies using microbial hosts has been reported, in which random nanobody sequences are fused with random peptide barcodes and can be identified by LC–MS/MS and NGS analysis (Egloff et al. 2019; Miyamoto et al. 2019). Egloff and colleagues prepared library of randomized nanobody sequences fused with peptide library produced by *E. coli* (Egloff et al. 2019). We reported secretory production of peptide-barcoded nanobodies using *P. pastoris* (Miyamoto et al. 2019). Since peptide-barcodes are smaller compared to nanobody itself, they have a little effect on binding abilities of nanobodies compared to conventional FLAG-tag composed by eight amino acids (Miyamoto et al. 2019).

Although a number of studies aim at “random” screening of nanobodies, practically it is important to select amino acids or amino acid regions to be mutated, for library preparation. Ribosome and phage display methods enable screening of up to 10^7 – 10^{12} library size (Zimmermann et al. 2018), which allow limited number of amino acid residues to be changed. Nanobody has three variable regions called complementarity-determining regions (CDRs). Previously, Deschaght and colleagues showed that there are large varieties in amino acid sequence of CDRs compared to other region, via NGS analysis of 28 nanobodies (Deschaght et al. 2017). So far, CDR has been used to prepare protein libraries in various hosts including yeast cells (McMahon et al. 2018) or phage (Yan et al. 2014) in addition to in vitro methods including ribosome display (Zimmermann et al. 2018). Of three CDRs of nanobodies, it has been suggested that, in some nanobodies, CDR3 is largely responsible for

specific binding to substrates (Gray et al. 2017), which has been used as a target for randomization when preparing nanobody libraries (Zimmermann et al. 2018; Moutel et al. 2016).

In practical nanobody applications, CDRs are inserted into proper scaffolds, such as universally humanized scaffolds (Vincke et al. 2009; Moutel et al. 2016) or scaffolds suitable for tissue imaging (De Groeve et al. 2010), with some integrated mutations to retain binding abilities (Rahbarizadeh et al. 2011). While CDR domain swapping can decrease the binding ability of nanobodies (Hwang and Foote 2005; Rahbarizadeh et al. 2011), utilization of scaffolds with specific properties is an attractive option for improving or preparing functional proteins. The amino acid sequence of the scaffold is highly conserved across nanobodies (Conrath et al. 2001; Saerens et al. 2005; Deschaght et al. 2017), which means that only small number of residues need to be modified.

In the present study, we used *P. pastoris* cells for the production of chimeric nanobodies to test the possibility of CDR swapping. We utilized green fluorescent protein (GFP)-nanobody (Rothbauer et al. 2006) and cluster of differentiation 4 (CD4)-nanobody (Roobrouck and Stortelers 2015) as models for preparing chimeric nanobodies. GFP-nanobody is one of the most popular nanobodies with the crystal structure of which has been analyzed (Kubala et al. 2010). CD4 is a cell surface antigen of mammalian immune cells that can be used as a marker for predicting clinical outcome in colorectal tumor (Galon et al. 2006). Unlike GFP-nanobody, the crystal structure of CD4-nanobody has not yet been resolved. Here we demonstrate methods for easy production of chimeric nanobodies in *P. pastoris* cells by utilizing seamless cloning. We also tested the production of chimeric nanobodies tagged with long peptide sequences for easy purification and detection of nanobodies.

Materials and methods

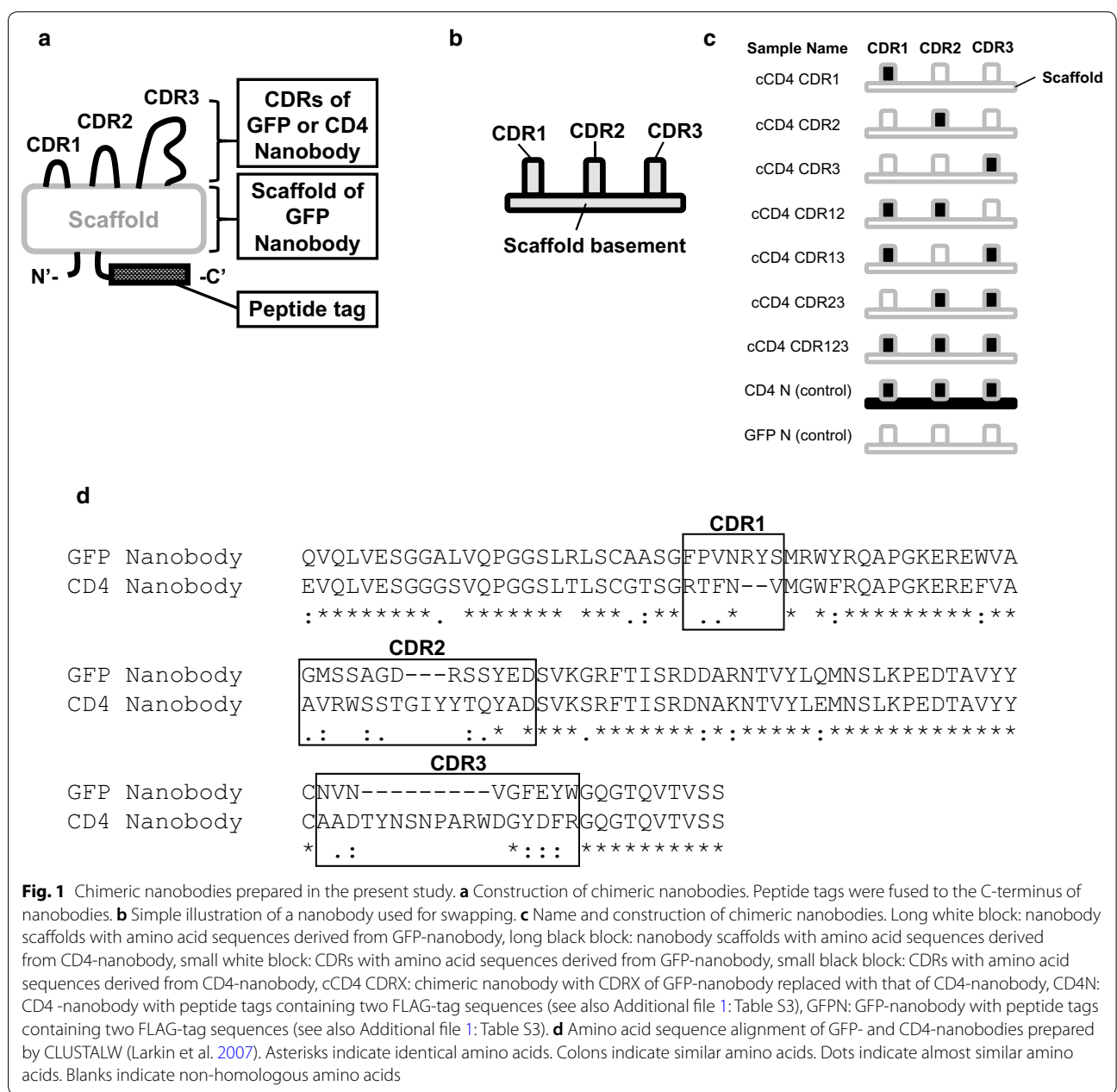
Strains and media

Cells and media were prepared according to the previous report (Aoki et al. 2011). *E. coli* strain DH5 α [F^- , Φ 80d *lacZ* Δ M15, Δ (*lacZYA-argF*)U169, *deoR*, *recA1*, *endA1*, *hsdR17*($r_K^- m_K^+$), *phoA*, *supE44*, λ^- , *thi-1*, *gyrA96*, *relA1*] (Toyobo, Osaka, Japan) was used as a host for plasmid construction. *P. pastoris* (*Komagataella phaffii*) strain GS115 [*his4*] was purchased from Thermo Fisher Scientific (Rockford, IL). *E. coli* cells transformed with plasmids were grown on lysogeny broth (LB) medium [0.5% (w/v) yeast extract, 1% (w/v) Bacto Tryptone, 1% (w/v) NaCl] containing 100 μ g/mL ampicillin. After transformation with plasmids, *P. pastoris* cells were grown on minimal dextrose (MD) agar plate containing 1.34% (w/v)

yeast nitrogen base w/o a.a., 2% (w/v) glucose, and 2% (w/v) agar. Obtained *P. pastoris* colonies were precultured in buffered glycerol complex (BMGY) medium containing 1% (w/v) yeast extract, 2% (w/v) peptone, 100 mM KPO₄ pH 6.0, 2.68% (w/v) yeast nitrogen base w/o a.a., and 0.2% 500× biotin. After preculture, cells were grown in a buffered methanol complex (BMMY) medium (expression medium) containing 1% (w/v) yeast extract, 2% (w/v) peptone, 100 mM KPO₄ pH 6.0, 2.68% (w/v) yeast nitrogen base w/o a.a., 0.2% 500× biotin, and 0.5% (v/v) methanol.

Plasmid construction and transformation

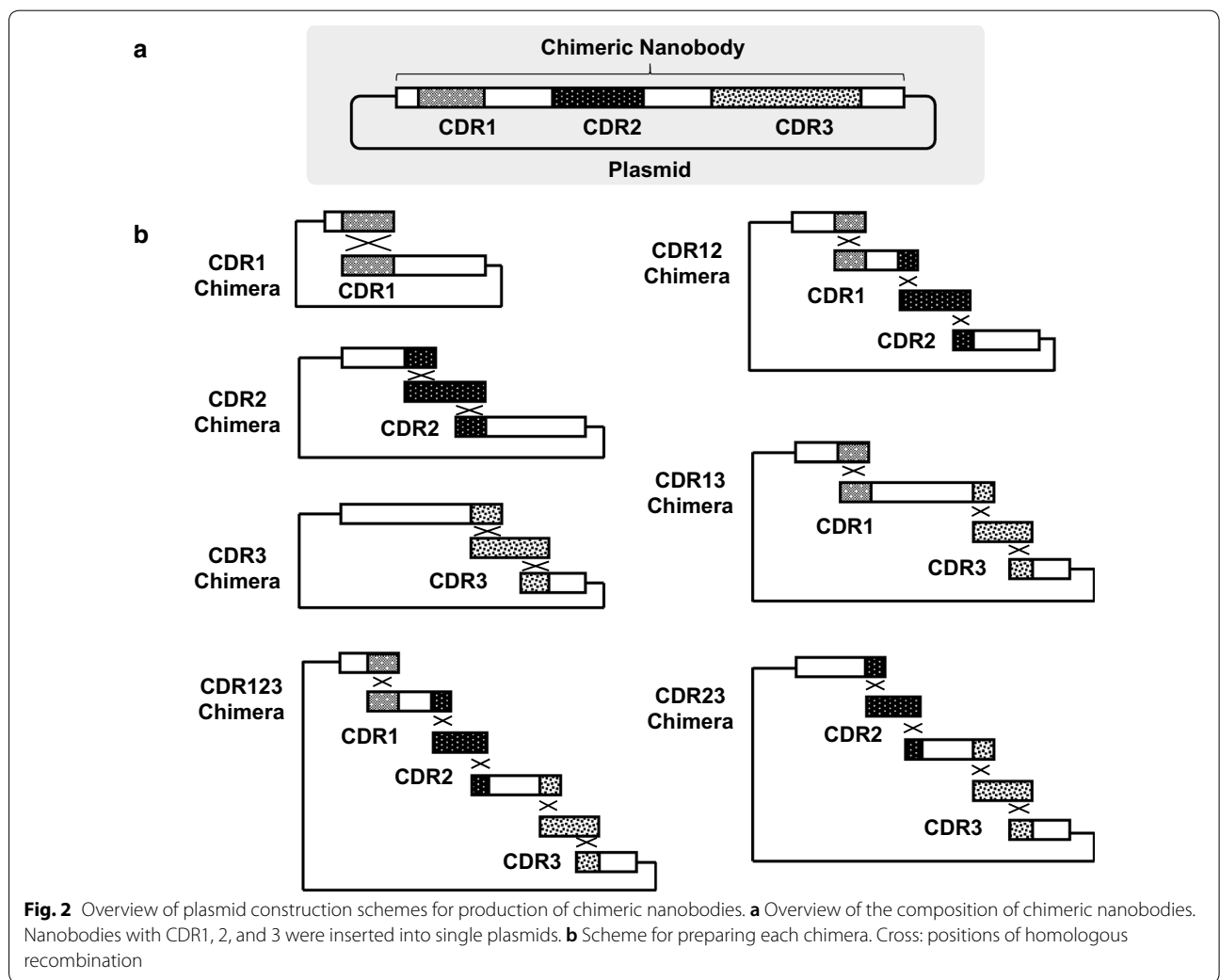
All primers used in this study are listed in Additional file 1: Table S1. Nucleotide sequences encoding GFP-nanobody (Rothbauer et al. 2006) and CD4-nanobody (Roobrouck and Stortelers 2015) genes were optimized for expression in *P. pastoris*, as shown in Additional file 1: Table S2, and were purchased from Integrated DNA Technologies, Inc (Coralville, IA). Chimeric nanobodies were constructed as shown in Fig. 1. Both nucleotide sequences for GFP-nanobody and CD4-nanobody were submitted to the DDBJ Sequenced



Read Archive with accession numbers LC472971 and LC472972, respectively. Nucleotide fragments were amplified by KOD plus Neo DNA polymerase (Toyobo, Osaka, Japan). DNA fragments were integrated into a pPIK9K vector (Invitrogen) using an In-Fusion HD Cloning Kit (Takara Bio, Otsu, Japan) to produce recombinant proteins with the amino acid sequences shown in Additional file 1: Table S3. For each nanobody, long peptide tags containing two FLAG-tag coding sequences were added to the C-terminus for easy handling of nanobodies (Fig. 1a). Figure 2 shows the types of nucleotide fragments prepared for the construction of each chimeric nanobody. Nucleotide sequence of the plasmids were determined by Sanger sequencing (Eurofins Genomics, Tokyo, Japan). The plasmids were digested with *SacI* (Toyobo) and transformed to *P. pastoris* cells using Frozen EZ Yeast Transformation II Kit (Zymo Research, Irvine, CA), following manufacturer's instructions.

Protein production and purification

Secreted recombinant proteins were purified with minor modifications to previously reported methods (Aoki et al. 2011; Miyamoto et al. 2019). To produce nanobodies, *P. pastoris* colonies on MD agar plate were cultured in 20 mL of BMGY medium with shake at 250 rpm, 48 h at 30 °C. The cells were cultured in 15 mL of BMMY medium for 24 h at 30 °C with shake at 250 rpm. Production of recombinant proteins were checked by using 10 µL of culture supernatants for SDS-PAGE as described in the next section. Cell culture was transferred to a 50 mL tube and centrifuged at 8000×g for 60 min at 4 °C. Culture supernatants (15 mL) obtained after centrifugation were filtrated with 0.22 µm filter and concentrated in a Amicon Ultra-15 Centrifugal Filters Ultracel-10K (Millipore, Billerica, MA). The samples were washed with TBS buffer (Nacalai, Kyoto, Japan) twice and resuspended in TBS buffer. The obtained sample solution (5 mL) containing FLAG-tagged recombinant proteins were purified by



250 μ L of anti-FLAG M2 affinity gel (Sigma, Saint Louis, MO) using disposable columns, following manufacturer's instructions. Proteins were eluted from the affinity gel using 1 mL of 0.1 M glycine-HCl (pH 3.5) and immediately neutralized by mixing with 20 μ L of 1 M Tris (pH 8.0). The protein solution was added to Amicon Ultracel-3K (Millipore) and the buffer was replaced three times with 500 μ L of PBS. The obtained protein solution was kept at 4 °C until use. The final protein concentration in the samples was determined by SDS-PAGE as described below.

SDS-PAGE

Culture supernatants, purified proteins, or a serial dilution of bovine serum albumin (BSA) (225, 450, 900, 1125, and 2250 ng per lane) were loaded into e-PAGEL 5–20% (Atto, Tokyo, Japan) and stained with CBB Stain One Super (Nacalai) according to the manufacturer's instructions. Gel images were obtained using the ImageQuant LAS 4000 minisystem (GE Healthcare Bio-Sciences AB, Uppsala, Sweden) and analyzed with ImageJ software (Abramoff et al. 2004). The protein concentration was quantified by applying the band intensity to a standard curve generated from the analysis of protein bands prepared using BSA.

Obtaining binding abilities of nanobodies by surface plasmon resonance

Recombinant GFP (ProSpec, Ness-Ziona, Israel) or CD4 (R&D Systems, MN, USA) were immobilized on a Sensor Chip CM5 (GE Healthcare) using an Amine Coupling Kit (GE Healthcare) according to the manufacturer's instructions for the BIACORE-T200 instrument (GE Healthcare). CD4 (20 μ g/mL, pH 6.0) and GFP (20 μ g/mL, pH 5.0) solutions were prepared using 10 mM HEPES buffer (GE Healthcare) or 10 mM acetate buffer (GE Healthcare), respectively. CD4 or GFP were immobilized on CM5 by an automatic program according to the manufacturer's instructions at 25 °C with a flow rate of 10 μ L/min. The binding of nanobodies to CD4 or GFP was tested at 25 °C according to the manufacturer's instructions for the BIACORE-T200 instrument using HBS-EP buffer (0.01 M HEPES pH 7.4, 0.15 M NaCl, 3 mM EDTA, and 0.005% (w/v) Surfactant P20) as a running buffer. Nanobodies were prepared to a concentration of 0.4 μ M using HBS-EP buffer. Binding to CD4 and GFP was analyzed under the following conditions: contact time 180 s, flow rate 30 μ L/min, and dissociation time 180 s. Sensor chips were recovered by 10 mM NaOH with a contact time of 30 s and a flow rate of 30 μ L/min. Response units of CD4- or GFP-nanobodies (CD4 N and GFP N, respectively) to CD4 or GFP, respectively, were used as positive controls. All the data obtained were analyzed by Biacore T200

Evaluation Software (GE Healthcare) and the binding levels (increase of relative response from the base line) were obtained. The data were adjusted as follows. For testing binding abilities of nanobodies to CD4, the relative binding level of CD4 N was set to 1. For testing binding abilities of nanobodies to GFP, the relative binding level of GFP N was set to 1. Statistical significance was evaluated using the unpaired Student's *t* test for comparisons between two means. For all experiments, significance was established at $p \leq 0.05$.

Results

Production of recombinant nanobodies by *P. pastoris*

Chimeric nanobodies (Fig. 1) were successfully constructed by one-step cloning of 1–4 nucleotide fragments (Fig. 2). Recombinant proteins in 10 μ L *P. pastoris* culture supernatant showed clear single bands (Fig. 3). The molecular masses of each band ranged from 14 to 17 kDa, representing the molecular weight of the products.

Relative binding abilities of chimeric nanobodies to CD4

CD4 and GFP were immobilized onto a CM5 chip at 9695.5 response unit (RU) and 1189.8 RU, respectively. Both nanobodies showed specific binding to their original targets (CD4 and GFP, respectively). CD4- and GFP-nanobodies did not respond to non-target molecules (GFP and CD4, respectively) (data not shown). To test the effect of CDR swapping on the ability of the nanobodies to bind to novel targets, relative binding abilities of chimeric nanobodies to CD4 was investigated (Fig. 4a and Additional file 1: Table S4). The response of GFP-nanobody (GFP N) to CD4 [0.025 ± 0.029 when response of CD4-nanobody (CD4N) to CD4 was set to 1] was approximately 40 times lower than that of

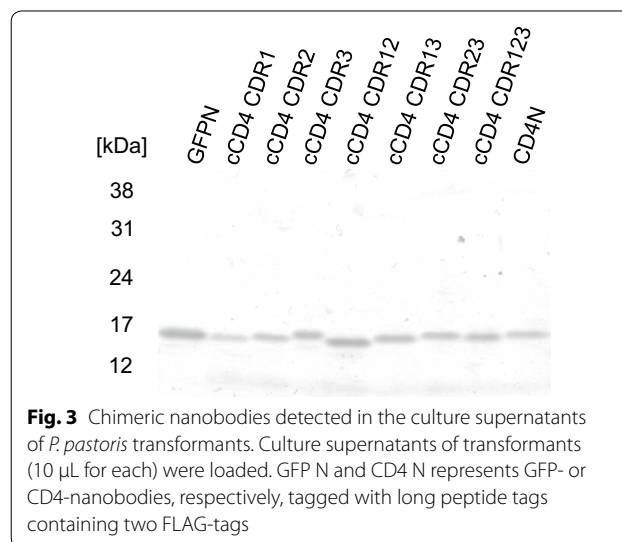
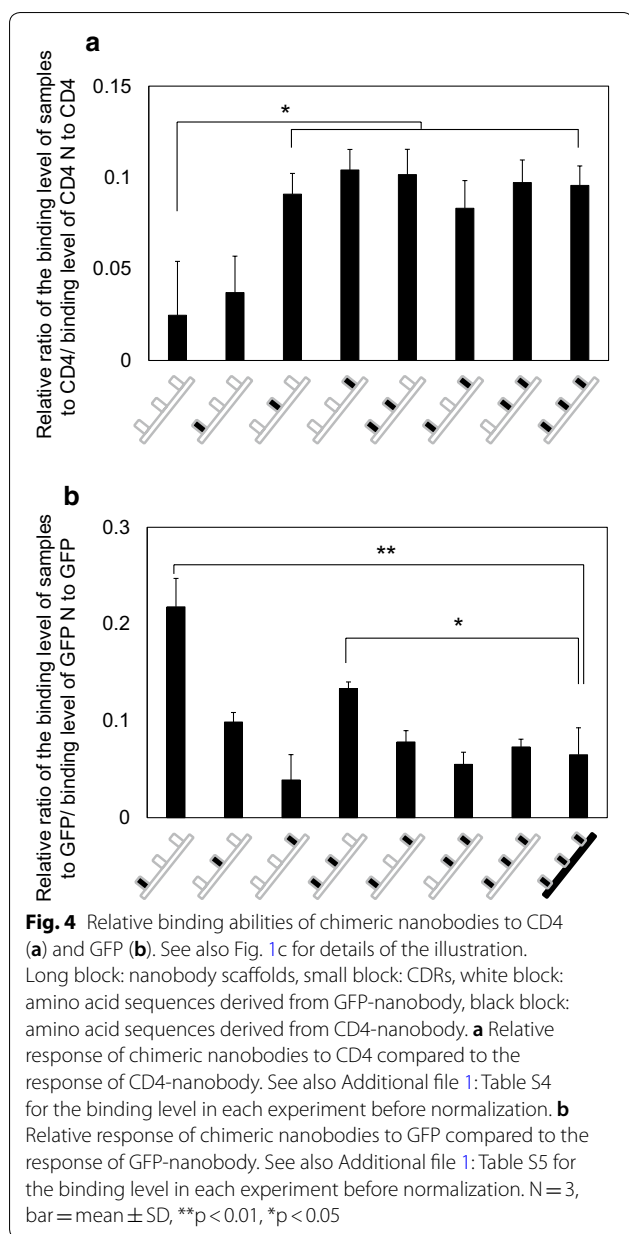


Fig. 3 Chimeric nanobodies detected in the culture supernatants of *P. pastoris* transformants. Culture supernatants of transformants (10 μ L for each) were loaded. GFP N and CD4 N represents GFP- or CD4-nanobodies, respectively, tagged with long peptide tags containing two FLAG-tags



CD4-nanobody. There were no significant changes when the CDR1 of GFP-nanobody was replaced with that of CD4-nanobody (0.037 ± 0.020). On the other hand, when the CDR2 (0.091 ± 0.011) or CDR3 (0.10 ± 0.011) of GFP-nanobody was replaced with that of CD4, the chimeric nanobodies showed a significant increase in relative binding response to CD4 compared to the original GFP-nanobody. There were no significant differences in response to CD4 among the chimeric nanobodies in which CDR2 or 3 is replaced, suggesting the importance of CDR2 and 3 in CD4 binding. Chimeric nanobodies in which all CDRs had been

replaced showed approximately 10% response to CD4-nanobody (0.096 ± 0.011).

Relative binding abilities of chimeric nanobodies to GFP

To test the effect of CDR swapping of original binding targets, the binding abilities of chimeric nanobodies to GFP was investigated (Fig. 4b). The response of CD4-nanobody to GFP [0.065 ± 0.028 when response of GFP-nanobody (GFP N) to GFP was set to 1] was approximately 15 times lower than that of GFP-nanobody. When the CDR1 of GFP-nanobody was replaced with that of CD4, the relative binding response to GFP dropped by 80% (0.22 ± 0.029), although this was still a significantly higher response than with the CD4-nanobody. When the CDR3 of GFP-nanobody was replaced with that of CD4-nanobody, the relative binding response to GFP (0.039 ± 0.026) was similar to that of CD4-nanobody (0.065 ± 0.028), suggesting that the replacement of CDR3 results in loss of the ability to bind to GFP.

Discussion

The present study demonstrated a simple and easy way of producing chimeric nanobodies in *P. pastoris* using one-step cloning of up to four nucleotide fragments. Since primer sequences used for preparing CDR and scaffold fragments are easily randomized or mutated, this method could be useful in producing large-scale libraries of chimeric nanobodies for high-throughput screening, including screening methods utilizing peptide-barcode (Egloff et al. 2019; Miyamoto et al. 2019). Notably, this method can be also used together with other synthetic methods for nanobody preparation (Moutel et al. 2016), which would enable easy preparation of nanobodies with variety of CDR length. In the chimeric nanobodies produced in the present study, replacement of CDRs significantly altered the response of nanobodies to both GFP and CD4, as expected. Replacement of the scaffold caused a decrease in the binding ability of nanobodies to targets, which is comparable to previous reports (Hwang and Foote 2005; Rahbarizadeh et al. 2011; Zabetakis et al. 2013). Scaffolds of GFP- and CD4-nanobodies have seven similar, three almost similar, and three non-homologous amino acid residues (Fig. 1d), suggesting that the decreased response to substrates is dependent on these amino acid residues. Unexpectedly, we did not detect significant synergistic increase in relative binding abilities among CDRs of CD4 nanobody on the scaffold of GFP nanobody. It is possible that synergistic effect of CDRs do not always happen; it has been previously reported by Zabetakis and colleagues that that synergistic increase in thermostability did not occur when CDRs of nanobody against the toxin Staphylococcal enterotoxin B was swapped by different CDRs (Zabetakis et al. 2013).

Further investigation is needed to determine how the specific CDRs and scaffolds synergistically or non-synergistically affect binding abilities of nanobody with respect to polypeptide length and diverse sequences. Nevertheless, this study demonstrated design and high-throughput production of various chimeric nanobodies using *P. pastoris*. Future studies will focus on randomization of CDRs in addition to three non-homologous amino acid residues on scaffolds to obtain novel and highly specific nanobodies via high-throughput screening.

Additional file

Additional file 1. Additional tables.

Acknowledgements

We thank Dr. Tetsuya Kadosono of Tokyo Institute of Technology for fruitful discussions and suggestions.

Authors' contributions

Conceptualization, NM, WA, and MU; Methodology, NM, KM, YO, KY, and SA; Writing, NM, KM, YK, WA, and MU. All authors read and approved the final manuscript.

Funding

This study was supported by JST-CREST (M.U., JPMJCR16G2) and the JSPS Research Fellowship for Young Scientists (S.A., 16J08791).

Availability of data and materials

All relevant data are within the manuscript and its additional files. Nucleotide sequence data reported are available in the DNA Data Bank of Japan (DDBJ), <http://www.ddbj.nig.ac.jp> under the Accession Numbers LC472971 and LC472972.

Ethics approval and consent to participate

Not applicable.

Consent for publication

Not applicable.

Competing interests

The authors declare that they have no competing interests.

Author details

¹ Graduate School of Agriculture, Kyoto University, Kyoto 606-8502, Japan. ² JST, Core Research for Evolutional Science and Technology (CREST), 7 Goban-cho, Chiyoda-ku, Tokyo 102-0076, Japan. ³ Present Address: Graduate School of Life and Environmental Sciences, Osaka Prefecture University, 1-1 Gakuen-cho, Naka-ku, Sakai 599-8531, Japan. ⁴ Research Fellow of the Japan Society for the Promotion of Science, Kitashirakawa Oiwake-cho, Sakyo-ku, Kyoto 606-8502, Japan. ⁵ Kyoto Integrated Science & Technology Bio-Analysis Center, 134, Chudoji Minamimachi, Simogyo-ku, Kyoto 600-8813, Japan.

Received: 15 March 2019 Accepted: 5 July 2019

Published online: 15 July 2019

References

- Abramoff MD, Magalhaes PJ, Ram SJ (2004) Image processing with ImageJ. *Biophoton Int* 11(7):36–42
- Agrawal V, Slivac I, Perret S, Bisson L, St-Laurent G, Murad Y, Zhang J, Durocher Y (2012) Stable expression of chimeric heavy chain antibodies in CHO cells. *Methods Mol Biol* 911:287–303. https://doi.org/10.1007/978-1-61779-968-6_18
- Aoki W, Kitahara N, Miura N, Morisaka H, Yamamoto Y, Kuroda K, Ueda M (2011) Comprehensive characterization of secreted aspartic proteases encoded by a virulence gene family in *Candida albicans*. *J Biochem* 150(4):431–438. <https://doi.org/10.1093/jb/mvr073>
- Arbabi Ghahroudi M, Desmyter A, Wyns L, Hamers R, Muyldermans S (1997) Selection and identification of single domain antibody fragments from camel heavy-chain antibodies. *FEBS Lett* 414(3):521–526
- Baghban R, Gargari SL, Rajabibazl M, Nazarian S, Bakherad H (2016) Camelid-derived heavy-chain nanobody against *Clostridium botulinum* Neurotoxin E in *Pichia pastoris*. *Biotechnol Appl Biochem* 63(2):200–205. <https://doi.org/10.1002/bab.1226>
- Bannas P, Hambach J, Koch-Nolte F (2017) Nanobodies and nanobody-based human heavy chain antibodies as antitumor therapeutics. *Front Immunol* 8:1603. <https://doi.org/10.3389/fimmu.2017.01603>
- Beghein E, Gettemans J (2017) Nanobody technology: a versatile toolkit for microscopic imaging, protein–protein interaction analysis, and protein function exploration. *Front Immunol* 8:771. <https://doi.org/10.3389/fimmu.2017.00771>
- Boder ET, Wittrup KD (1997) Yeast surface display for screening combinatorial polypeptide libraries. *Nat Biotechnol* 15(6):553–557. <https://doi.org/10.1038/nbt0697-553>
- Cereghino GP, Cereghino JL, Ilgen C, Cregg JM (2002) Production of recombinant proteins in fermenter cultures of the yeast *Pichia pastoris*. *Curr Opin Biotechnol* 13(4):329–332
- Conrath KE, Lauwereys M, Galleni M, Matagne A, Frere JM, Kinne J, Wyns L, Muyldermans S (2001) Beta-lactamase inhibitors derived from single-domain antibody fragments elicited in the camelidae. *Antimicrob Agents Chemother* 45(10):2807–2812. <https://doi.org/10.1128/AAC.45.10.2807-2812.2001>
- De Groeve K, Deschacht N, De Koninck C, Caveliers V, Lahoutte T, Devoogdt N, Muyldermans S, De Baetselier P, Raes G (2010) Nanobodies as tools for in vivo imaging of specific immune cell types. *J Nucl Med* 51(5):782–789. <https://doi.org/10.2967/jnumed.109.070078>
- De Meyer T, Muyldermans S, Depicker A (2014) Nanobody-based products as research and diagnostic tools. *Trends Biotechnol* 32(5):263–270. <https://doi.org/10.1016/j.tibtech.2014.03.001>
- Deschaght P, Vintem AP, Logghe M, Conde M, Felix D, Mensink R, Goncalves J, Audiens J, Bruynooghe Y, Figueiredo R, Ramos D, Tanghe R, Teixeira D, Van de Ven L, Stortelers C, Dombrecht B (2017) Large diversity of functional nanobodies from a camelid immune library revealed by an alternative analysis of next-generation sequencing data. *Front Immunol* 8:420. <https://doi.org/10.3389/fimmu.2017.00420>
- Egloff P, Zimmermann I, Arnold FM, Hutter CAJ, Morger D, Opitz L, Poveda L, Keserue HA, Panse C, Roschitzki B, Seeger MA (2019) Engineered peptide barcodes for in-depth analyses of binding protein libraries. *Nat Methods* 16(5):421–428. <https://doi.org/10.1038/s41592-019-0389-8>
- Ezzine A, M'Hirsi El Adab S, Bouhaouala-Zahar B, Hmila I, Baciou L, Marzouki MN (2012) Efficient expression of the Anti-AahI scorpion toxin nanobody under a new functional form in a *Pichia pastoris* system. *Biotechnol Appl Biochem* 59(1):15–21. <https://doi.org/10.1002/bab.67>
- Ferrer-Miralles N, Villaverde A (2013) Bacterial cell factories for recombinant protein production; expanding the catalogue. *Microb Cell Fact* 12:113. <https://doi.org/10.1186/1475-2859-12-113>
- Frenzel A, Hust M, Schirrmann T (2013) Expression of recombinant antibodies. *Front Immunol* 4:217. <https://doi.org/10.3389/fimmu.2013.00217>
- Galan A, Comor L, Horvatic A, Kules J, Guillemin N, Mrljak V, Bhide M (2016) Library-based display technologies: where do we stand? *Mol Biosyst* 12(8):2342–2358. <https://doi.org/10.1039/c6mb00219f>
- Galon J, Costes A, Sanchez-Cabo F, Kirilovsky A, Mlecnik B, Lagorce-Pages C, Tosolini M, Camus M, Berger A, Wind P, Zinzindohoue F, Bruneval P, Cugnenc PH, Trajanoski Z, Fridman WH, Pages F (2006) Type, density, and location of immune cells within human colorectal tumors predict clinical outcome. *Science* 313(5795):1960–1964. <https://doi.org/10.1126/science.1129139>
- Gorlani A, Hulsik DL, Adams H, Vriend G, Hermans P, Verrips T (2012) Antibody engineering reveals the important role of j segments in the production efficiency of llama single-domain antibodies in *Saccharomyces cerevisiae*. *Protein Eng Des Sel* 25(1):39–46. <https://doi.org/10.1093/protein/gzr057>

- Gray ER, Brookes JC, Caillat C, Turbe V, Webb BLJ, Granger LA, Miller BS, McCoy LE, El Khattabi M, Verrips CT, Weiss RA, Duffy DM, Weissenhorn W, McKendry RA (2017) Unravelling the molecular basis of high affinity nanobodies against HIV p24: in vitro functional, structural, and in silico insights. *ACS Infect Dis* 3(7):479–491. <https://doi.org/10.1021/acscinfecdis.6b00189>
- Gu L, Li C, Aach J, Hill DE, Vidal M, Church GM (2014) Multiplex single-molecule interaction profiling of DNA-barcoded proteins. *Nature* 515(7528):554–557. <https://doi.org/10.1038/nature13761>
- Hamers-Casterman C, Atarhouch T, Muyldermans S, Robinson G, Hamers C, Songa EB, Bendahman N, Hamers R (1993) Naturally occurring antibodies devoid of light chains. *Nature* 363(6428):446–448. <https://doi.org/10.1038/363446a0>
- Hu Y, Liu C, Muyldermans S (2017) Nanobody-based delivery systems for diagnosis and targeted tumor therapy. *Front Immunol* 8:1442. <https://doi.org/10.3389/fimmu.2017.01442>
- Hwang WY, Foote J (2005) Immunogenicity of engineered antibodies. *Methods* 36(1):3–10. <https://doi.org/10.1016/j.jymeth.2005.01.001>
- Joosten V, Gouka RJ, van den Hondel CA, Verrips CT, Lokman BC (2005) Expression and production of llama variable heavy-chain antibody fragments (V(HH)s) by *Aspergillus awamori*. *Appl Microbiol Biotechnol* 66(4):384–392. <https://doi.org/10.1007/s00253-004-1689-0>
- Kubala MH, Kovtun O, Alexandrov K, Collins BM (2010) Structural and thermodynamic analysis of the GFP:GFP-nanobody complex. *Protein Sci* 19(12):2389–2401. <https://doi.org/10.1002/pro.519>
- Larkin MA, Blackshields G, Brown NP, Chenna R, McGettigan PA, McWilliam H, Valentin F, Wallace IM, Wilm A, Lopez R, Thompson JD, Gibson TJ, Higgins DG (2007) Clustal W and Clustal X Version 2.0. *Bioinformatics* 23(21):2947–2948. <https://doi.org/10.1093/bioinformatics/btm404>
- McMahon C, Baier AS, Pascolutti R, Wegrecki M, Zheng S, Ong JX, Erlanson SC, Hilger D, Rasmussen SGF, Ring AM, Manglik A, Kruse AC (2018) Yeast surface display platform for rapid discovery of conformationally selective nanobodies. *Nat Struct Mol Biol* 25(3):289–296. <https://doi.org/10.1038/s41594-018-0028-6>
- Miyamoto K, Aoki W, Ohtani Y, Miura N, Aburaya S, Matsuzaki Y, Kajiwara K, Kitagawa Y, Ueda M (2019) Peptide barcoding for establishment of new types of genotype–phenotype linkages. *PLoS ONE* 14(4):e0215993. <https://doi.org/10.1371/journal.pone.0215993>
- Moutel S, Bery N, Bernard V, Keller L, Lemesre E, de Marco A, Ligat L, Rain JC, Favre G, Olichon A, Perez F (2016) NaLi-H1: a universal synthetic library of humanized nanobodies providing highly functional antibodies and intrabodies. *Elife*. <https://doi.org/10.7554/elife.16228>
- Okazaki F, Aoki J, Tabuchi S, Tanaka T, Ogino C, Kondo A (2012) Efficient heterologous expression and secretion in *Aspergillus oryzae* of a llama variable heavy-chain antibody fragment V(HH) against EGFR. *Appl Microbiol Biotechnol* 96(1):81–88. <https://doi.org/10.1007/s00253-012-4158-1>
- Palomares LA, Estrada-Mondaca S, Ramirez OT (2004) Production of recombinant proteins: challenges and solutions. *Methods Mol Biol* 267:15–52. <https://doi.org/10.1385/1-59259-774-2:015>
- Pardon E, Laeremans T, Triest S, Rasmussen SG, Wohlkonig A, Ruf A, Muyldermans S, Hol WG, Kobilka BK, Steyaert J (2014) A general protocol for the generation of nanobodies for structural biology. *Nat Protoc* 9(3):674–693. <https://doi.org/10.1038/nprot.2014.039>
- Pourasadi S, Mousavi Gargari SL, Rajabibazl M, Nazarian S (2017) Efficient production of nanobodies against urease activity of *Helicobacter pylori* in *Pichia pastoris*. *Turk J Med Sci* 47(2):695–701. <https://doi.org/10.3906/sag-1509-121>
- Rahbarizadeh F, Ahmadvand D, Sharifzadeh Z (2011) Nanobody; an old concept and new vehicle for immunotargeting. *Immunol Invest* 40(3):299–338. <https://doi.org/10.3109/08820139.2010.542228>
- Roobrouck A, Stortelers C (2015) Bispecific nanobodies. WO2015044386A1
- Rothbauer U, Zolghadr K, Tillib S, Nowak D, Schermelleh L, Gahl A, Backmann N, Conrath K, Muyldermans S, Cardoso MC, Leonhardt H (2006) Targeting and tracing antigens in live cells with fluorescent nanobodies. *Nat Methods* 3(11):887–889. <https://doi.org/10.1038/nmeth953>
- Saerens D, Pellis M, Loris R, Pardon E, Dumoulin M, Matagne A, Wyns L, Muyldermans S, Conrath K (2005) Identification of a universal VHH framework to graft non-canonical antigen-binding loops of camel single-domain antibodies. *J Mol Biol* 352(3):597–607. <https://doi.org/10.1016/j.jmb.2005.07.038>
- Vincke C, Loris R, Saerens D, Martinez-Rodriguez S, Muyldermans S, Conrath K (2009) General strategy to humanize a camelid single-domain antibody and identification of a universal humanized nanobody scaffold. *J Biol Chem* 284(5):3273–3284. <https://doi.org/10.1074/jbc.M806889200>
- Yan J, Li G, Hu Y, Ou W, Wan Y (2014) Construction of a synthetic phage-displayed nanobody library with CDR3 regions randomized by trinucleotide cassettes for diagnostic applications. *J Transl Med* 12:343. <https://doi.org/10.1186/s12967-014-0343-6>
- Zabetakis D, Anderson GP, Bayya N, Goldman ER (2013) Contributions of the complementarity determining regions to the thermal stability of a single-domain antibody. *PLoS ONE* 8(10):e77678. <https://doi.org/10.1371/journal.pone.0077678>
- Zhang J, Liu X, Bell A, To R, Baral TN, Azizi A, Li J, Cass B, Durocher Y (2009) Transient expression and purification of chimeric heavy chain antibodies. *Protein Expr Purif* 65(1):77–82. <https://doi.org/10.1016/j.pep.2008.10.011>
- Zimmermann I, Egloff P, Hutter CA, Arnold FM, Stohler P, Bocquet N, Hug MN, Huber S, Siegrist M, Hetemann L, Gera J, Gmur S, Spies P, Gygax D, Geertsma ER, Dawson RJ, Seeger MA (2018) Synthetic single domain antibodies for the conformational trapping of membrane proteins. *Elife*. <https://doi.org/10.7554/elife.34317>

Publisher's Note

Springer Nature remains neutral with regard to jurisdictional claims in published maps and institutional affiliations.

Submit your manuscript to a SpringerOpen® journal and benefit from:

- Convenient online submission
- Rigorous peer review
- Open access: articles freely available online
- High visibility within the field
- Retaining the copyright to your article

Submit your next manuscript at ► [springeropen.com](https://www.springeropen.com)