

8353 TCTAGAAGATCGTATTGGACGATTCCAAATTCATG F1 →

8385 GTCCAACGGTTATGAATGGTTATTTCAAAAATGATGAAGCAAATGCGGAAAGTTTTACTGAAGATGGCTGGTTCGATAGT

8465 GGAGATCTGGGGTTTATACATAACGGTAATCTTGTGATTACAGGAAGAAAAAAGGATATGATTGTTGTTTCATGGTGCAAA

8545 TTACTACAACATGAAATTGAAGCCTTGGTAGAACAAGTACCTGGGGTGGAAACCACGTTTGTATGTGCAACGAGTGTGA

8625 AGTCGGCTGAAGGAGCAGAGGAATTAGCTATTTTTCTTTGTCCAGTAATTAATCATGTTTCTGTGATGTTTGGCAGCATG

8705 CAACAAATCAAACAAATTGTTGCGCGCAAATGGGTATCACGCCGAAAGTGATTATACCAATTCAGAAGGAAGCATTCTT F5 →

8785 TAAAACGGATAGTGGGAAAATAACGAGAAATGCATTTCAAAAACAGTTTGAGAACGGGGCATATAGAGAGATTACACAAA F6 →

8865 AGATTGATTGCCATTTACAAAATGAAAAACACTATCTCAGTGGTTTTATCGTGAAAAATTAGTCGAAAGTAAGTTGGGC F7 →

8945 AAAAGCGTATCCTCCCAAAAAGAAACGTATGTTTTCTTTGACAAGGTAAATCATTTTCATCATGTCCTAAAAGAAAAGTT

9025 AACGCAACATTCTGTTGTTATTGTGGATGTAGGAGAAACATTCGGTGAGATCCATCCAAATCATTATCAAATTAATCCTA F8 →

9105 AAAACAAAATGGATTACGTTTCGATTATTTGAAGAAGTTCGCAAAAAGAAATGTAGAAGATCAAGTTTTTTCATCTCTTGCAT F9 →

9185 GCTTGAATTATTGCGATACAGTTCCAACTTTTAGATCGGTAGAAGATTTAGCTAATGCGCAATATCTTGGTGTGTTTAG F10 →

9265 TGTGATGTTTCGCACTTCAAGCTATTATGCATGCGAAATTGCCACTACGTCGTGTTACGGTGATTGCGACAAAATAGTGTG ← R10, P-R10

9345 GATTAGAAGCGAAGGAAATGAA ← B1

Fig. 1

A

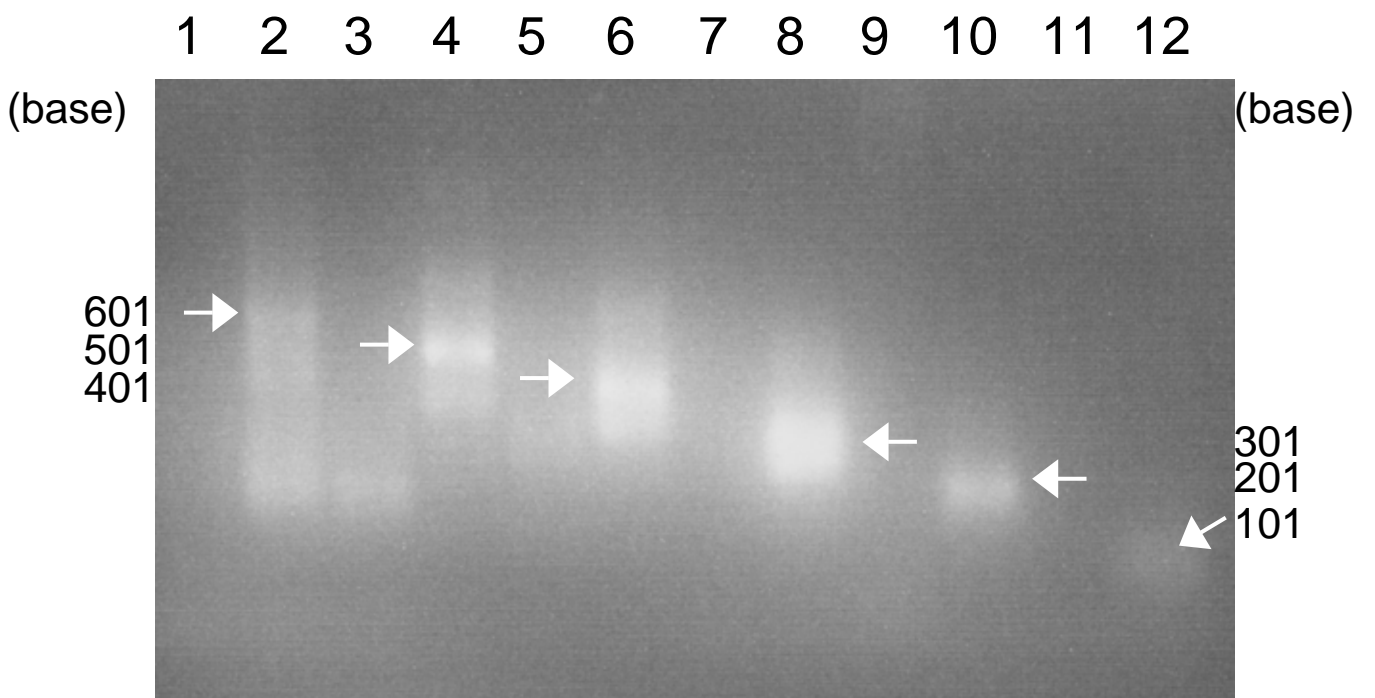


Fig. 2

B

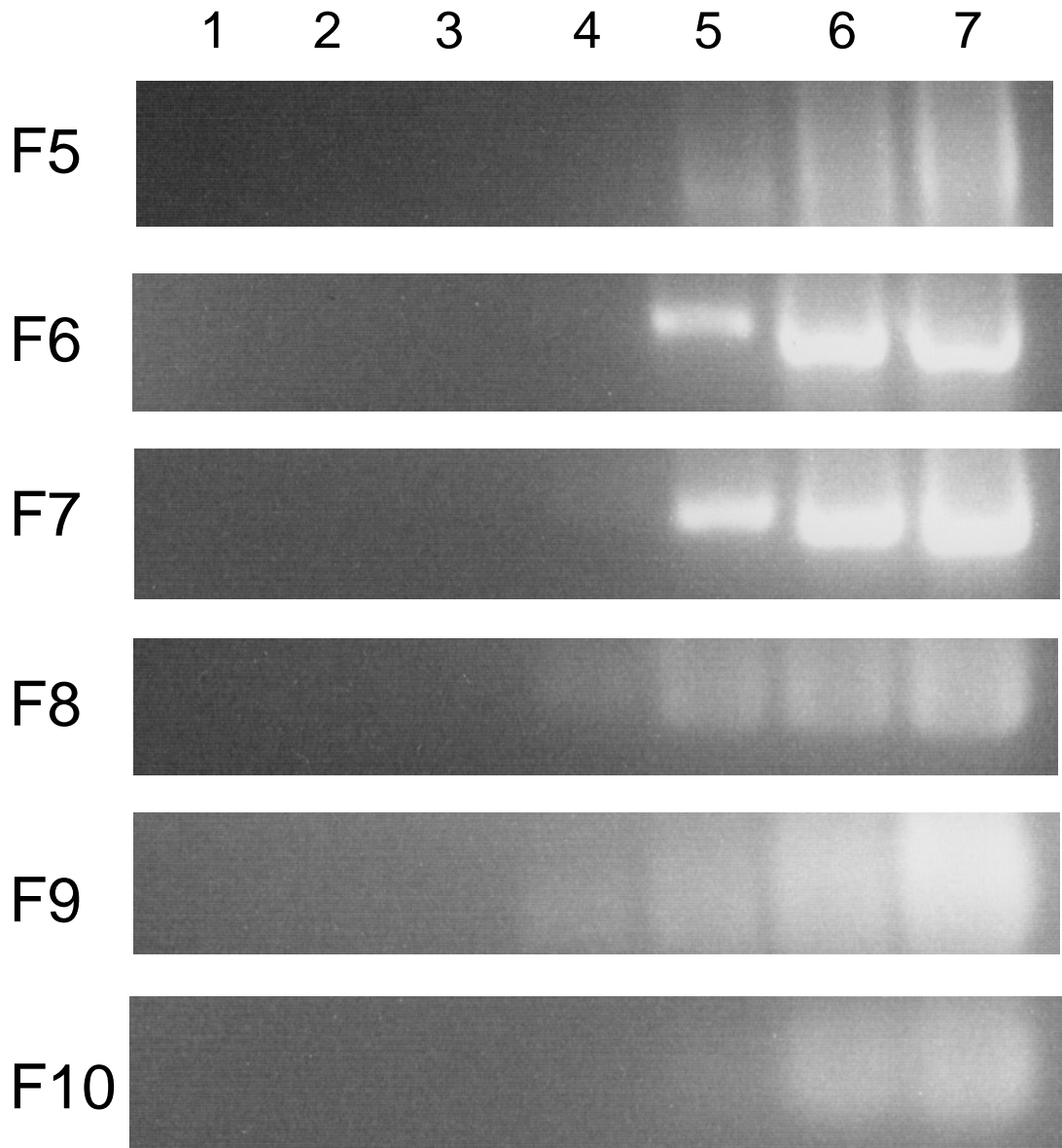


Fig. 2

C

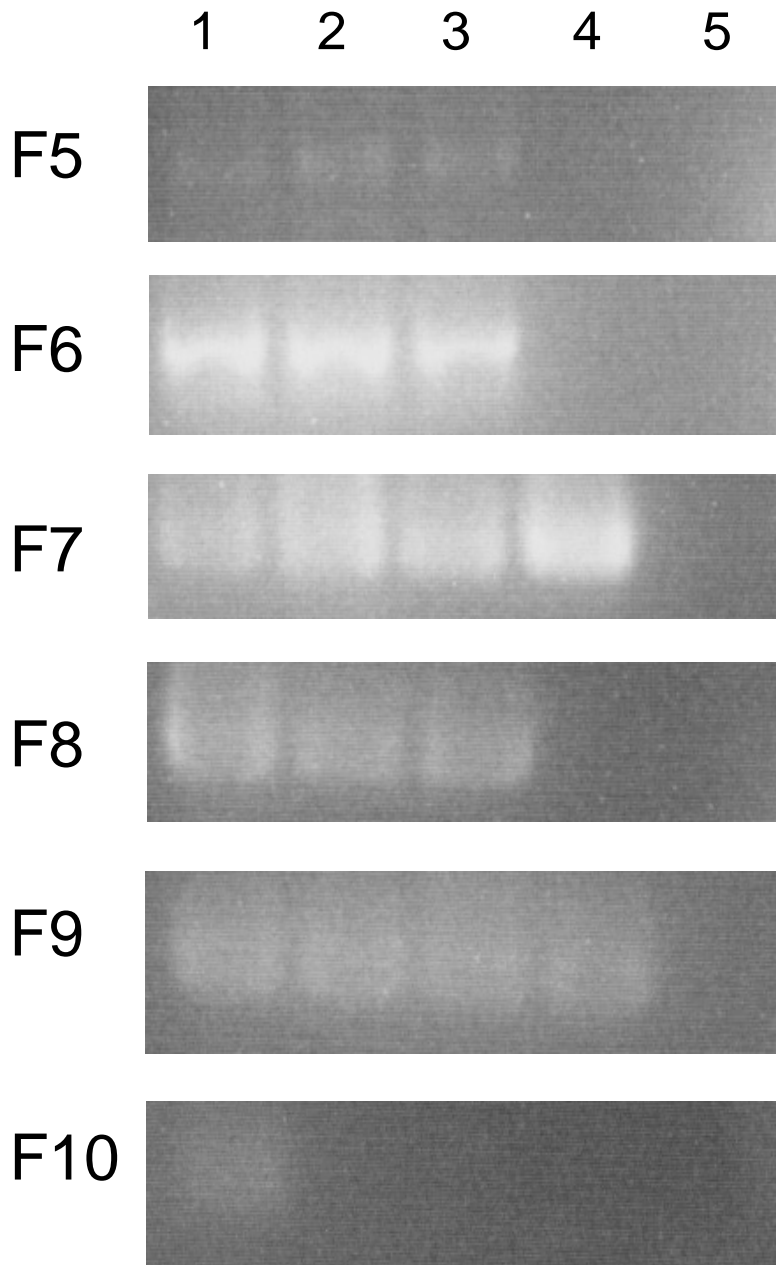


Fig. 2

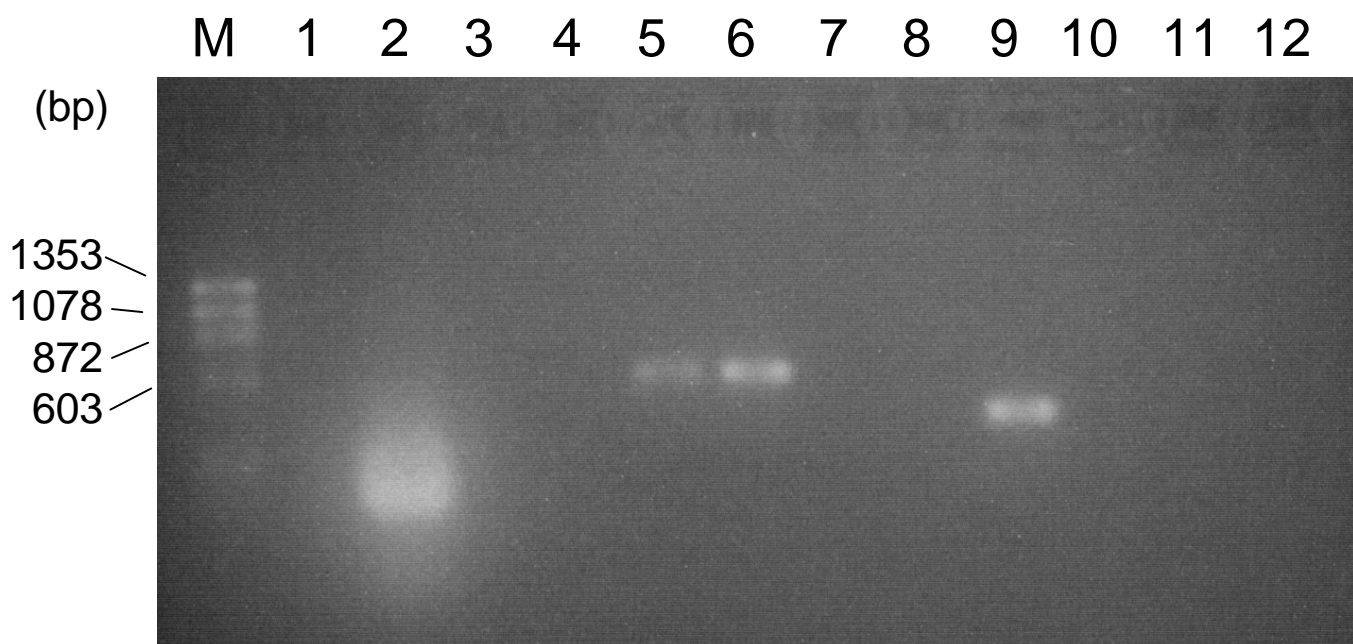


Fig. 3