



Cave-Temples of Yün-kang, Central and Western Groups.

雲岡石窟 中央群および西方群

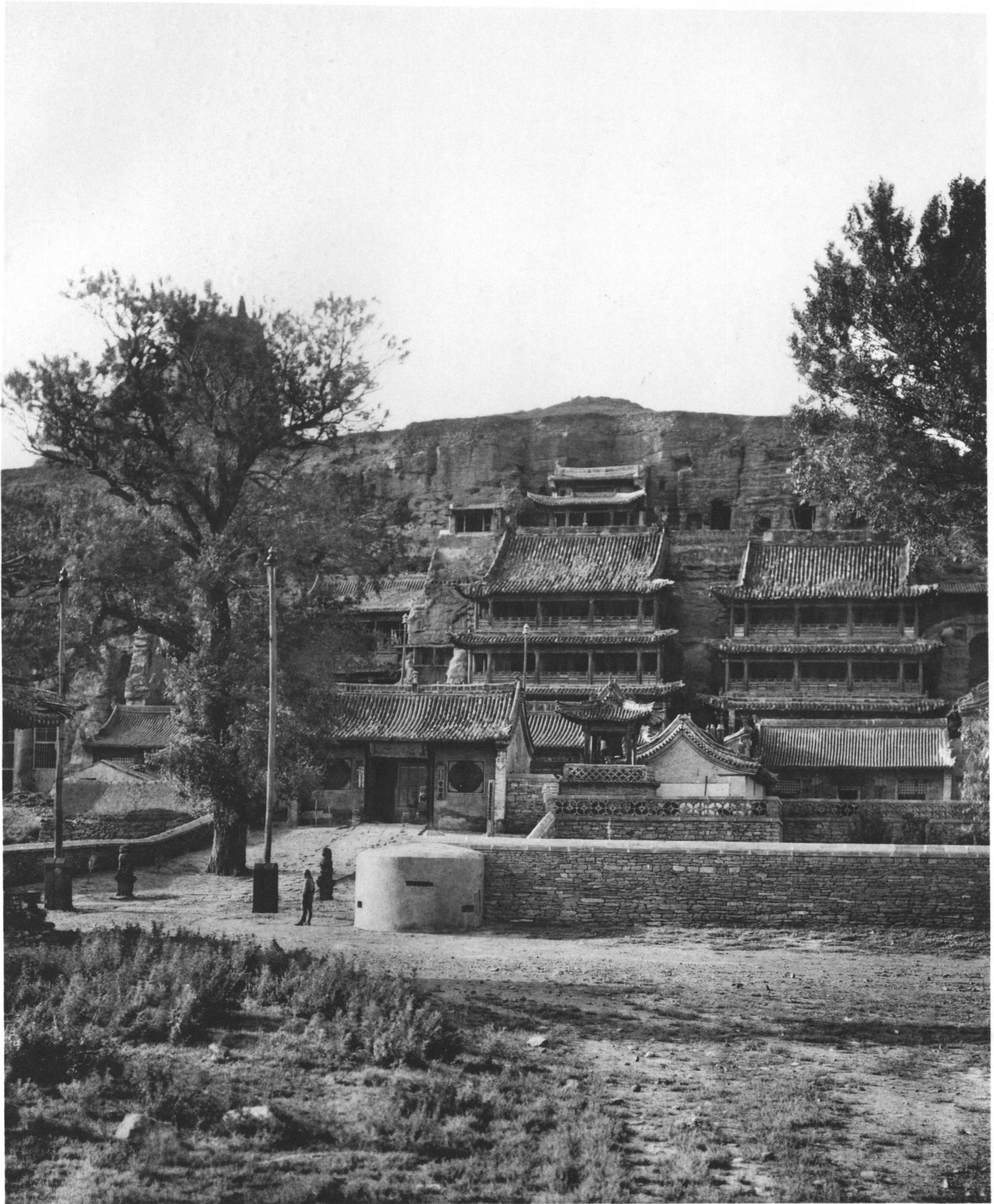




Cave-Temples of Yün-kang, Central Group.

雲岡石窟 中央群





Shih-fo-ku-ssu Temple, General View.

石佛古寺 全景



A



B

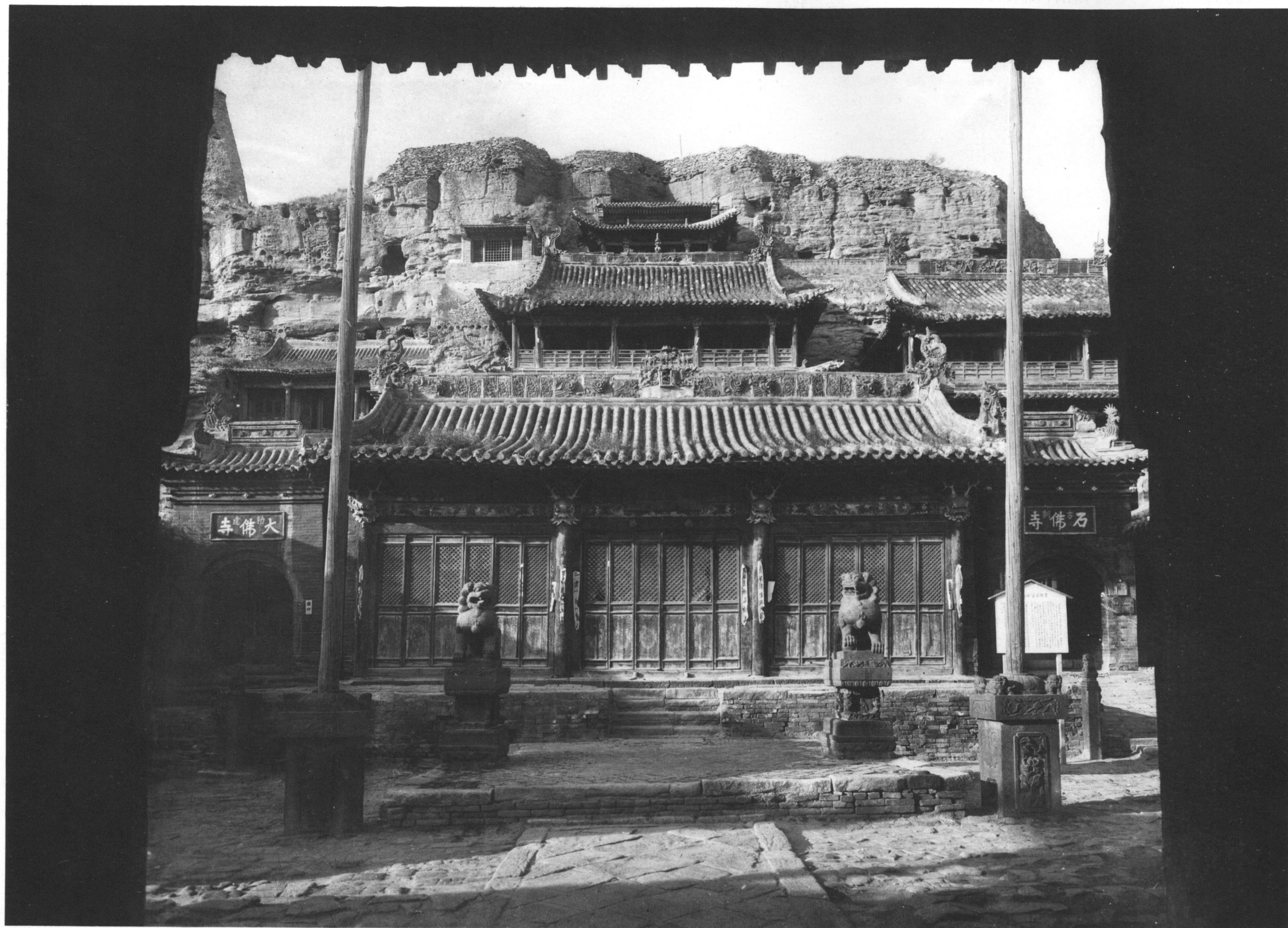
A) Shih-fo-ku-ssü Temple, Front Area.

石佛古寺 門前

B) Shih-fo-ku-ssü Temple, Chin-kang Gate.

石佛古寺 金剛門





Shih-fo-ku-ssü Temple, T'ien-wang Hall.

石佛古寺 天王殿





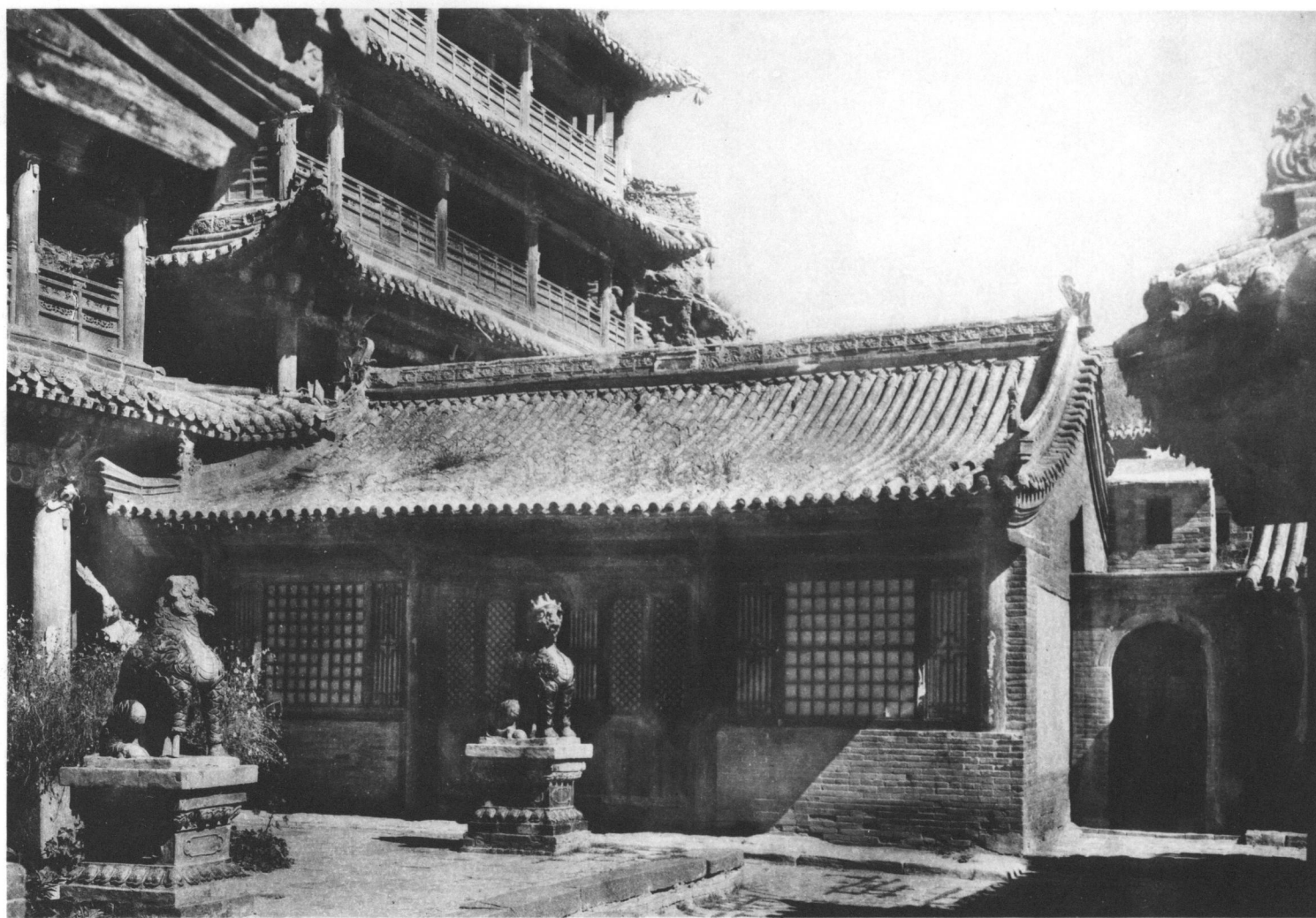
Shih-fo-ku-ssū Temple, View from the Top.

石佛古寺 俯瞰





A



B

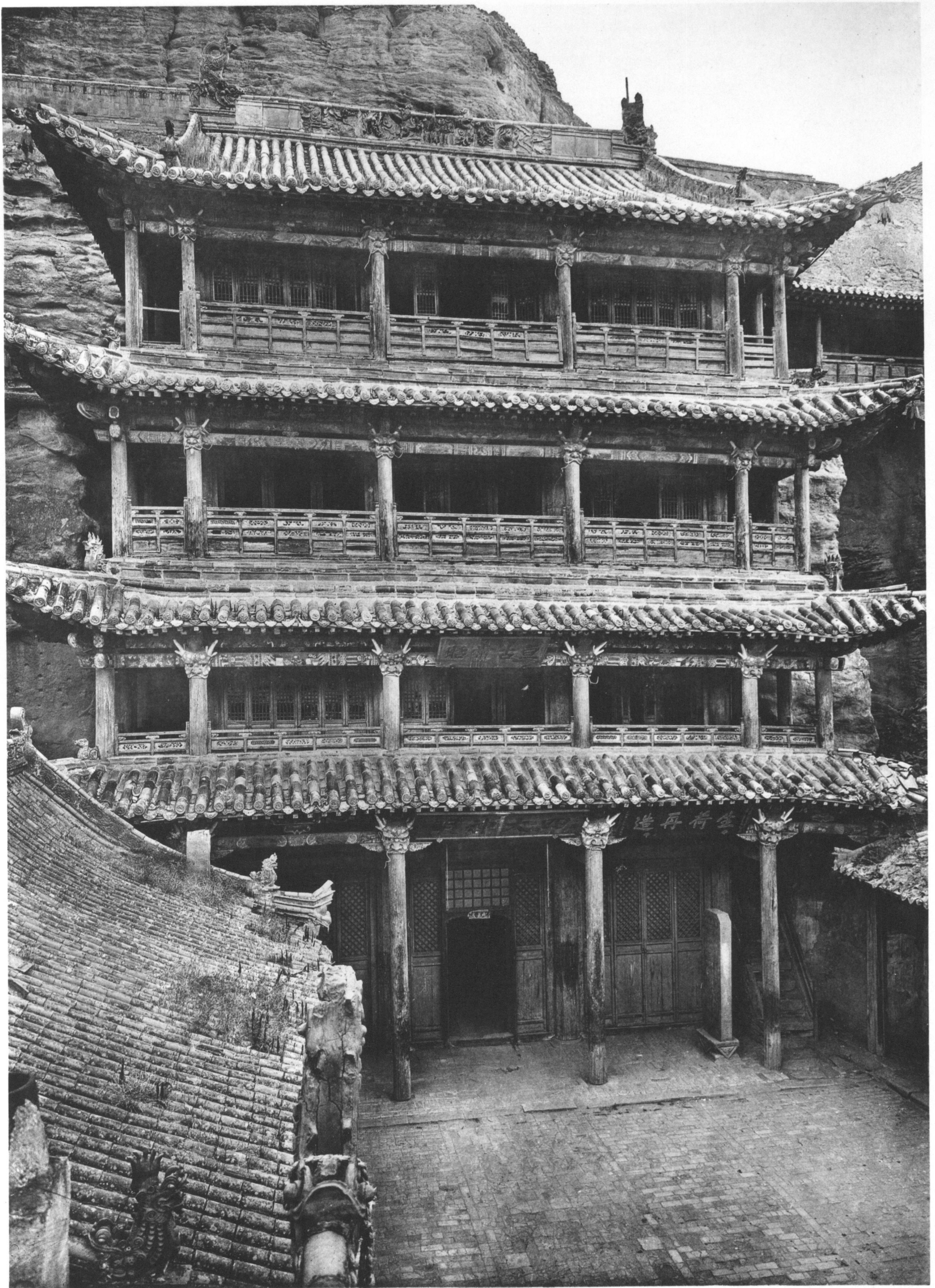
A) Shih-fo-ku-ssü Temple, Kuan-yin Hall.

石佛古寺 觀音殿

B) Shih-fo-ku-ssü Temple, Guest House.

石佛古寺 客殿





Shih-fo-ku-ssü Temple, Four-Storeyed Pavilion of Cave V.

石佛古寺 第五洞 四層樓