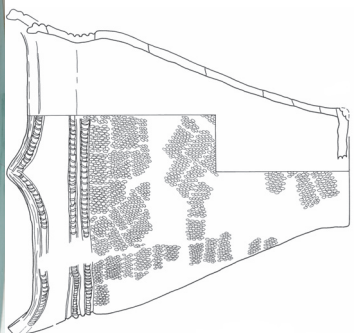
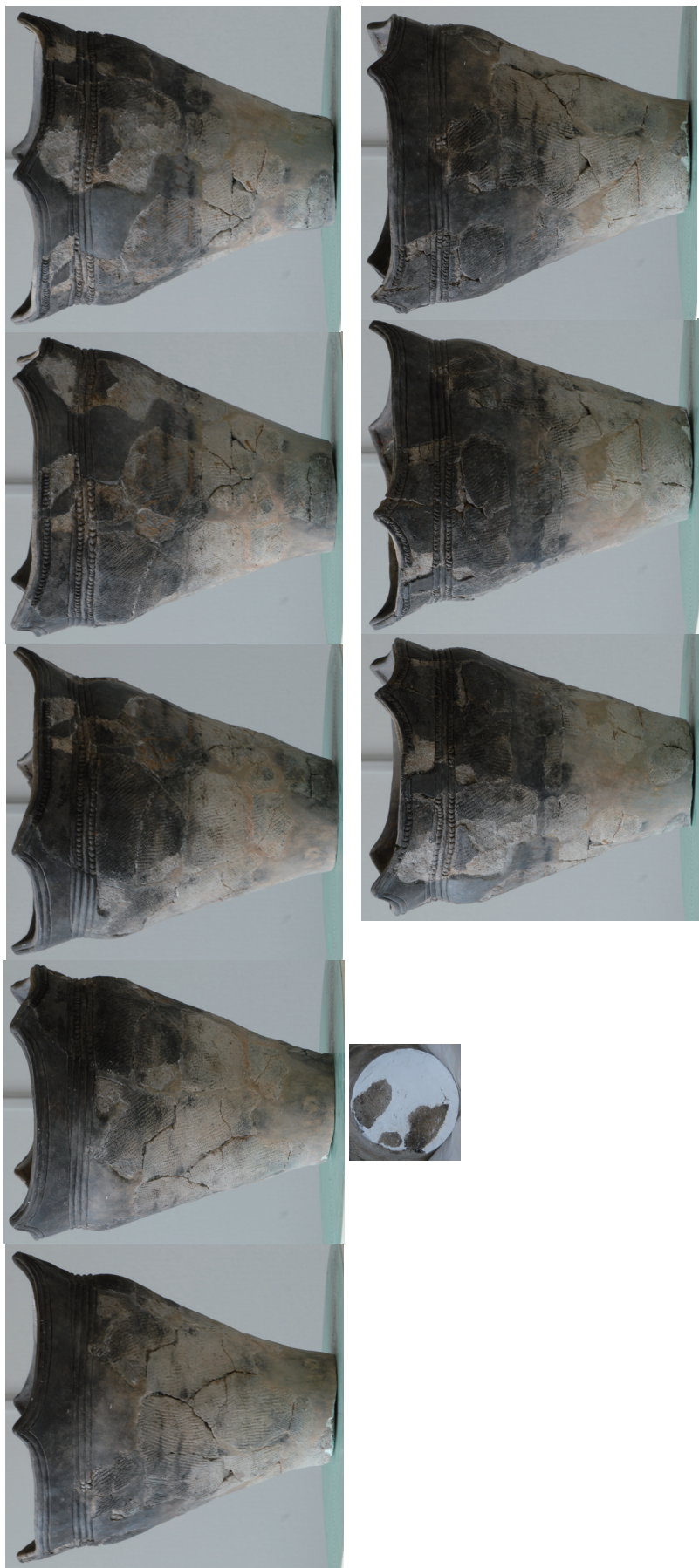


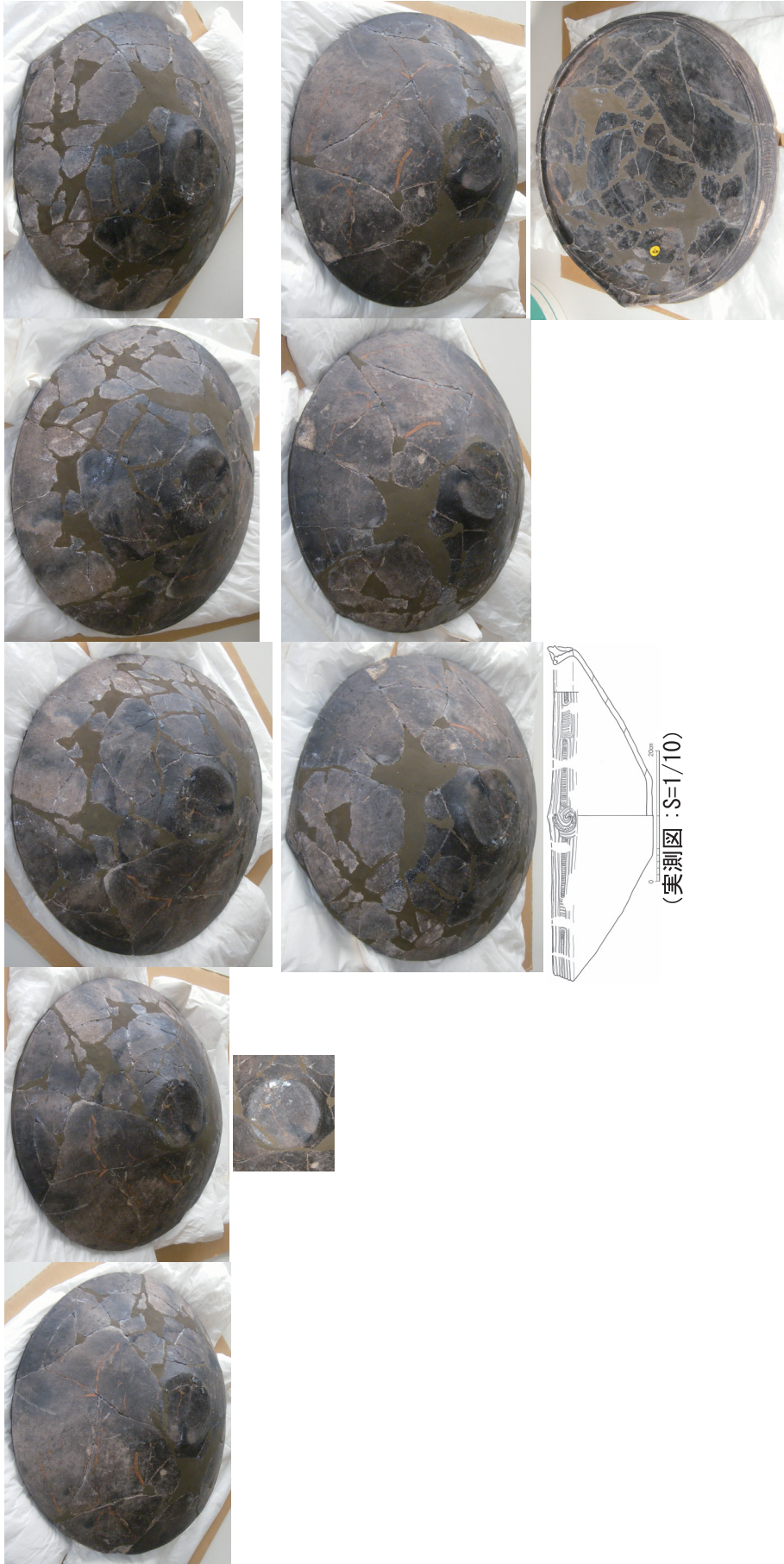
舟岡 10 区埋壘

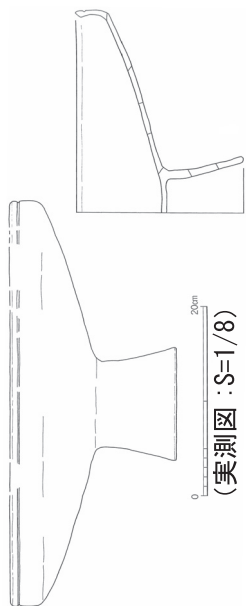
『桜町遺跡』(2004・2006)

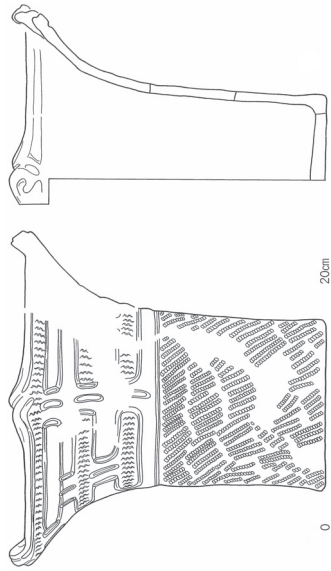


0 20cm
(実測図 : S=1/8)

『桜町遺跡』(2006)舟岡地区2

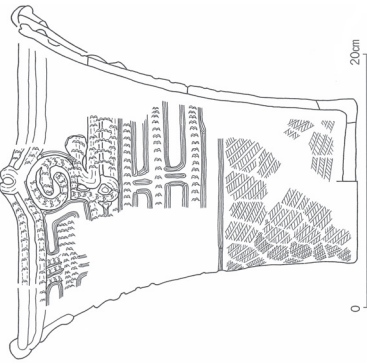
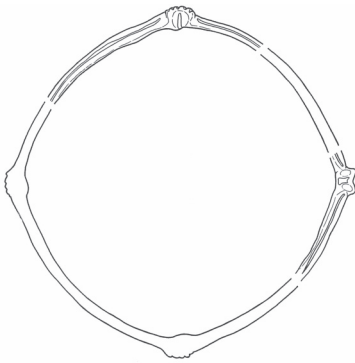




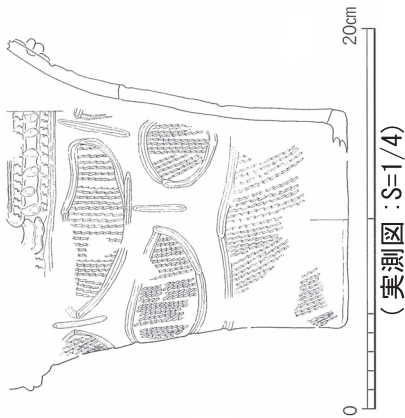
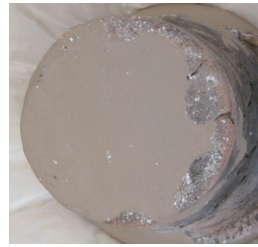


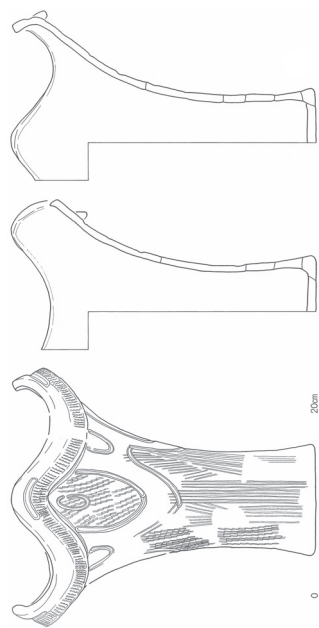
0 20cm

(実測図 : S=1/6)



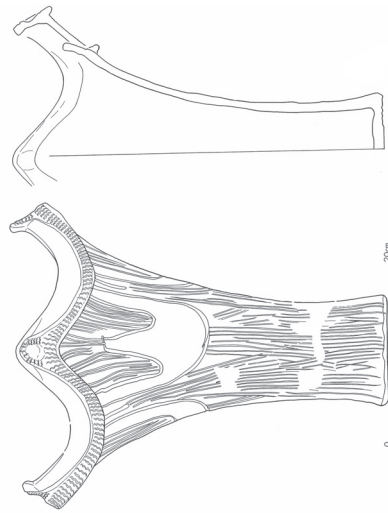
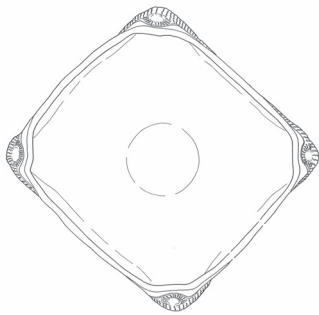
(実測図 : S=1/6)





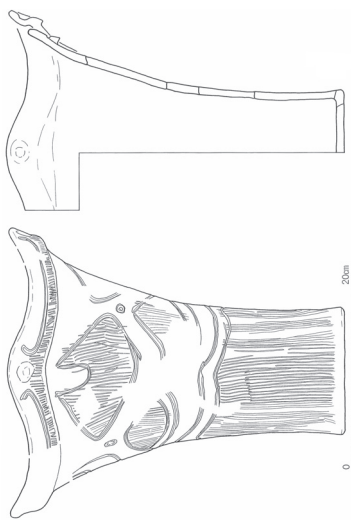
0 20mm

(実測図 : S=1/8)



0 20cm
(実測図 : S=1/8)

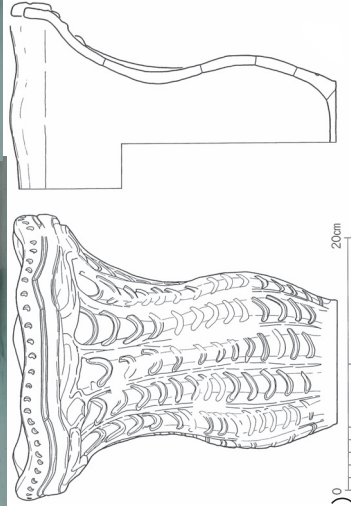
『桜町遺跡』(2006) 舟岡地区 27



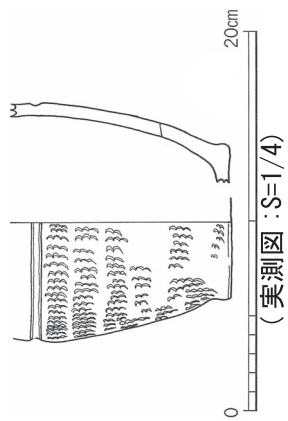
0 20mm
(実測図 : S=1/8)

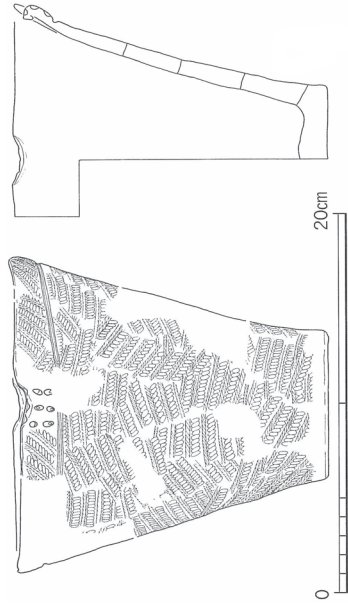


『桜町遺跡』(2006) 舟岡地区 35

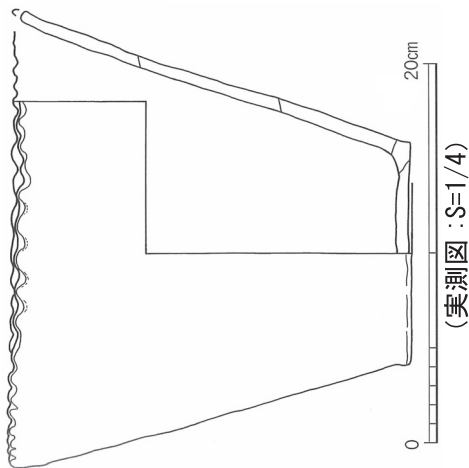


(実測図 : S=1/6)

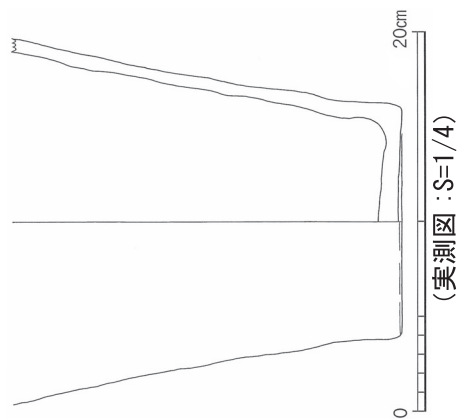
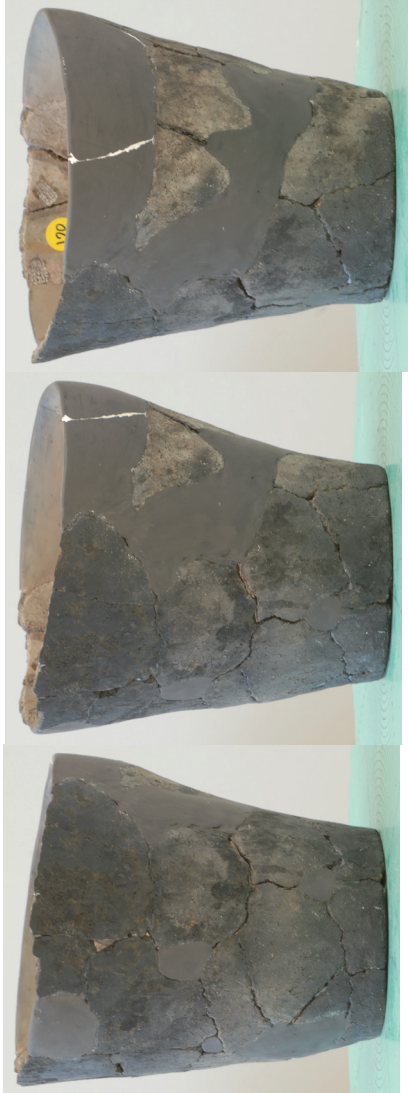
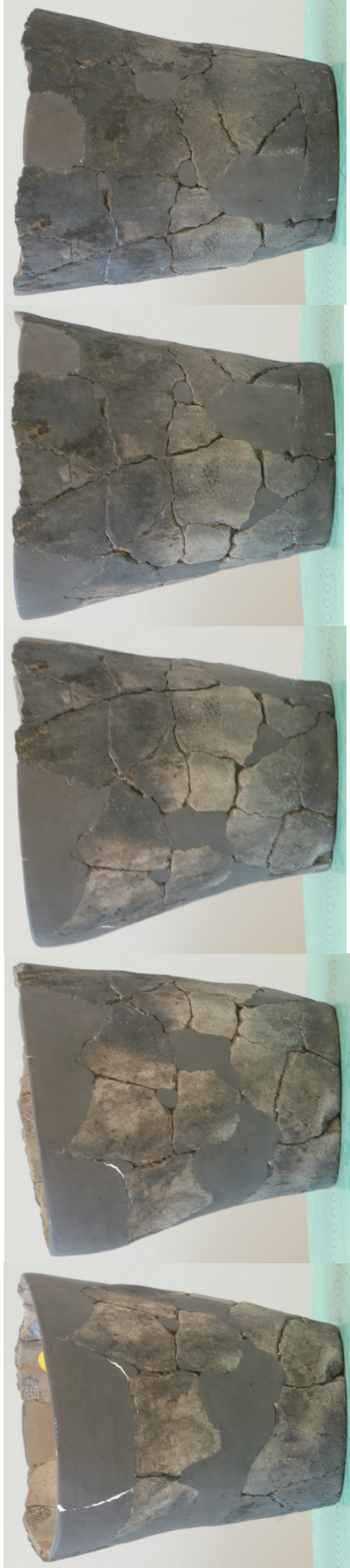




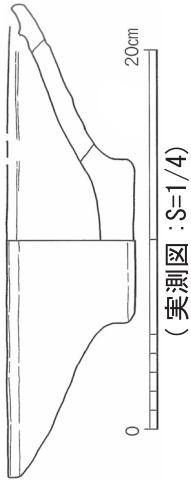
(美測図 : S=1/4)

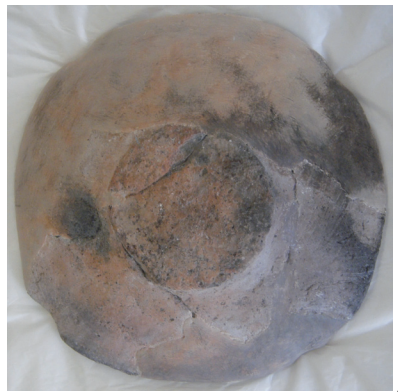
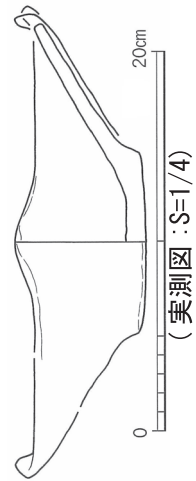


『桜町遺跡』(2006) 舟岡地区 50

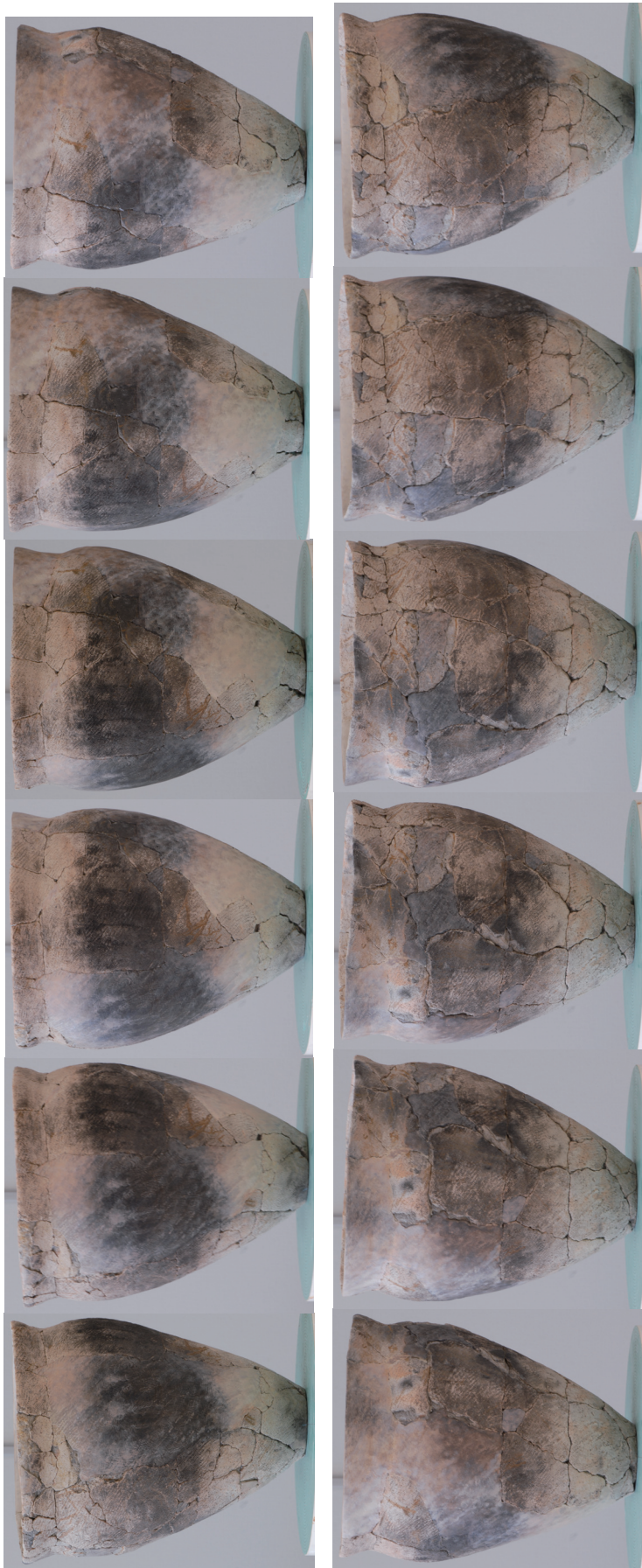


『桜町遺跡』(2006) 舟岡地区 52

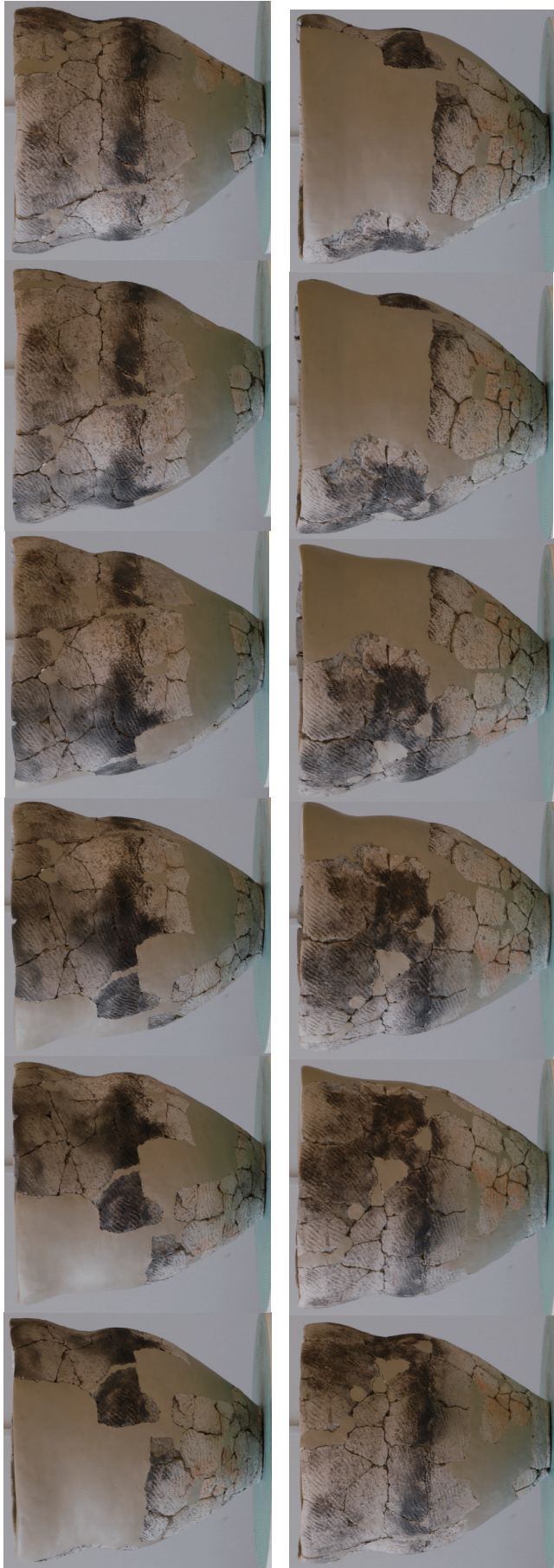




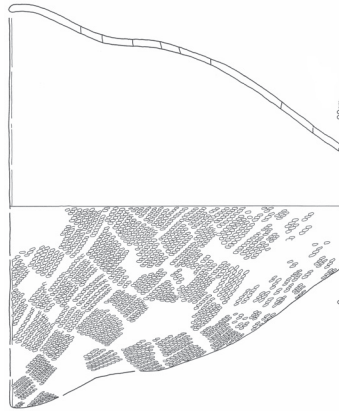
『桜町遺跡』(2006) 舟岡地区 59



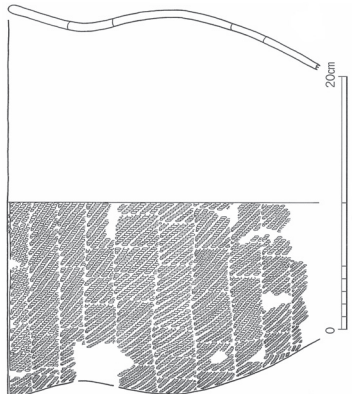
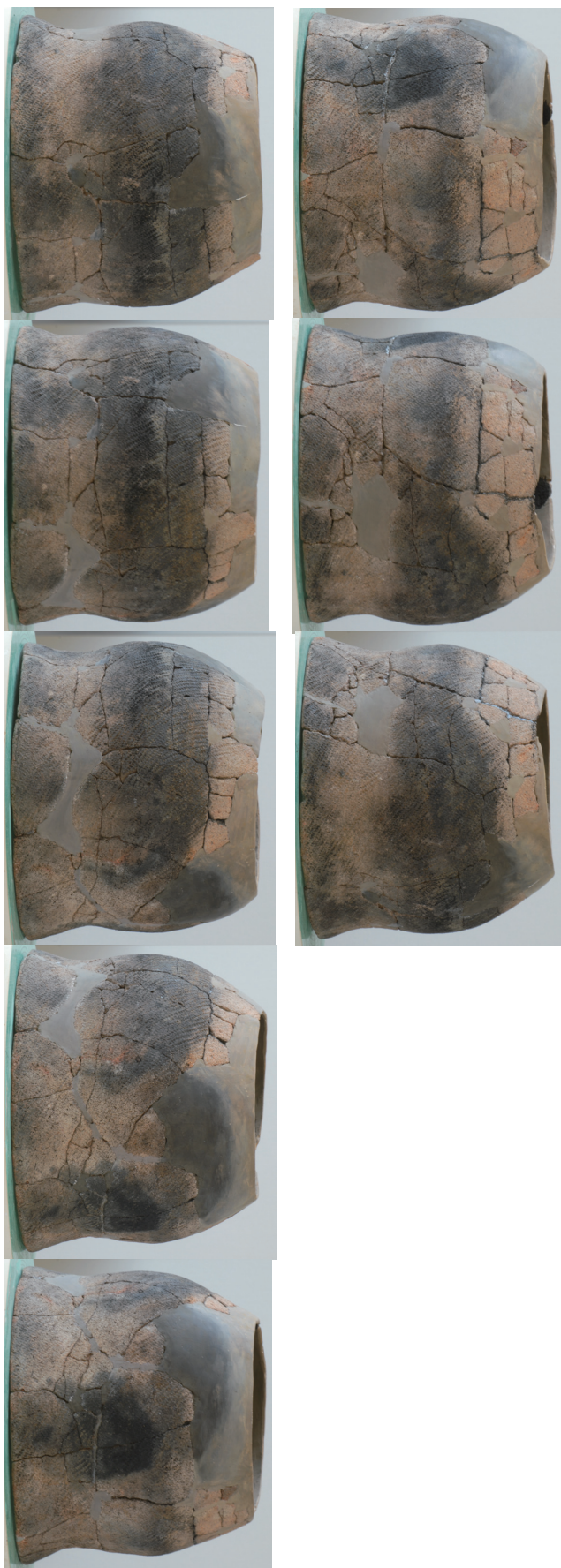
(実測図 : S=1/8)



(実測図：S=1/8)



(実測図 : S=1/8)



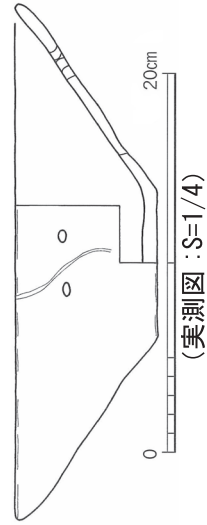
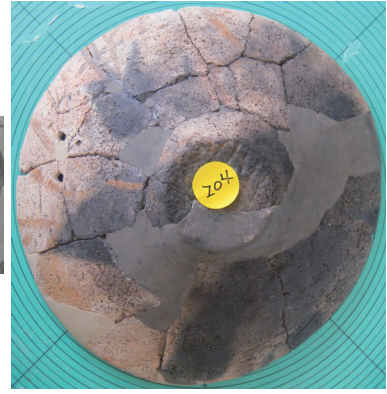
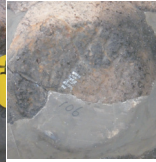
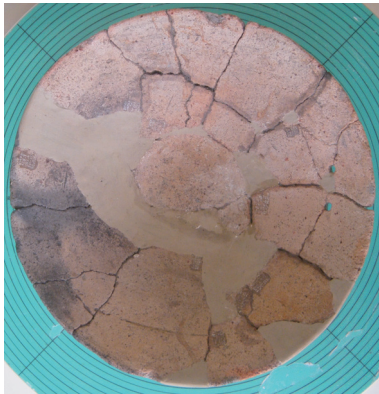
(実測図 : S=1/6)

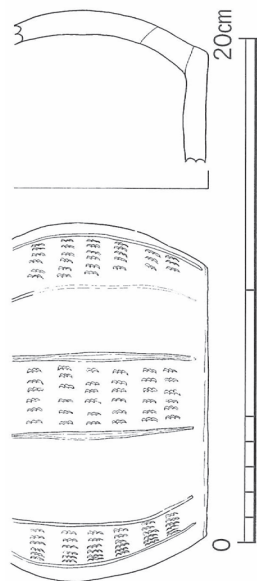


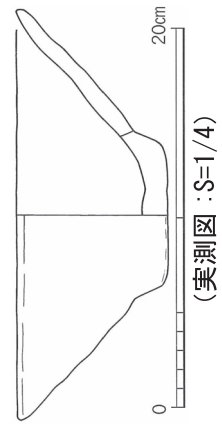
(実測図 : S=1/8)

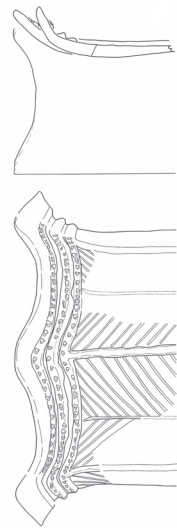
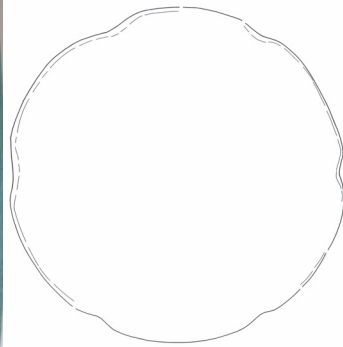


『桜町遺跡』(2006) 舟岡地区 87

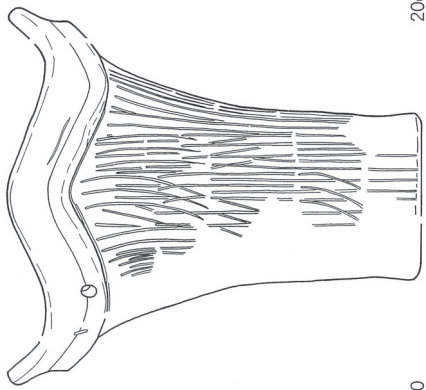
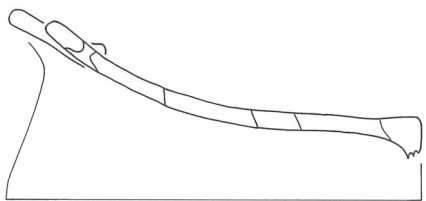








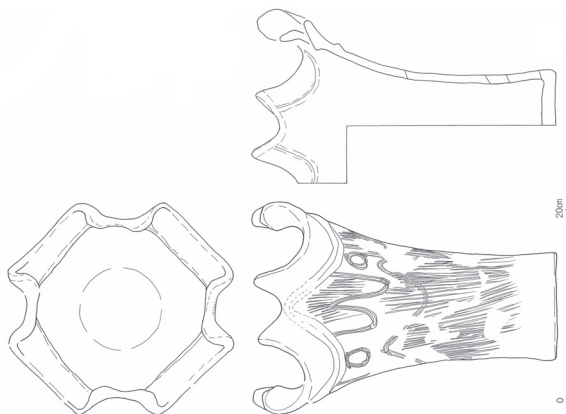
(実測図 : S=1/8)



20cm

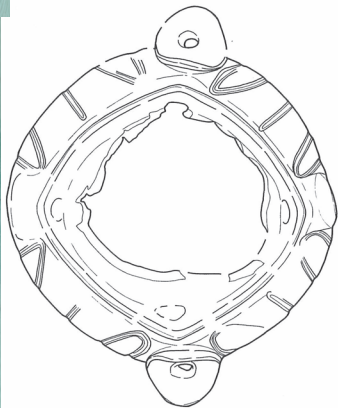
0

(実測図・S=1/4)

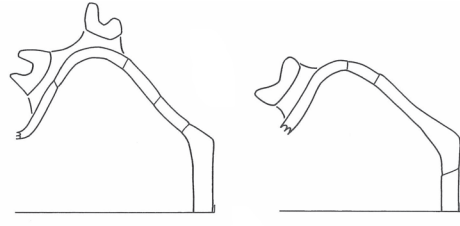


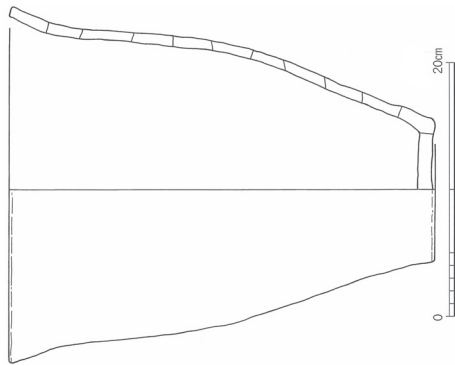
(実測図 : S=1/8)





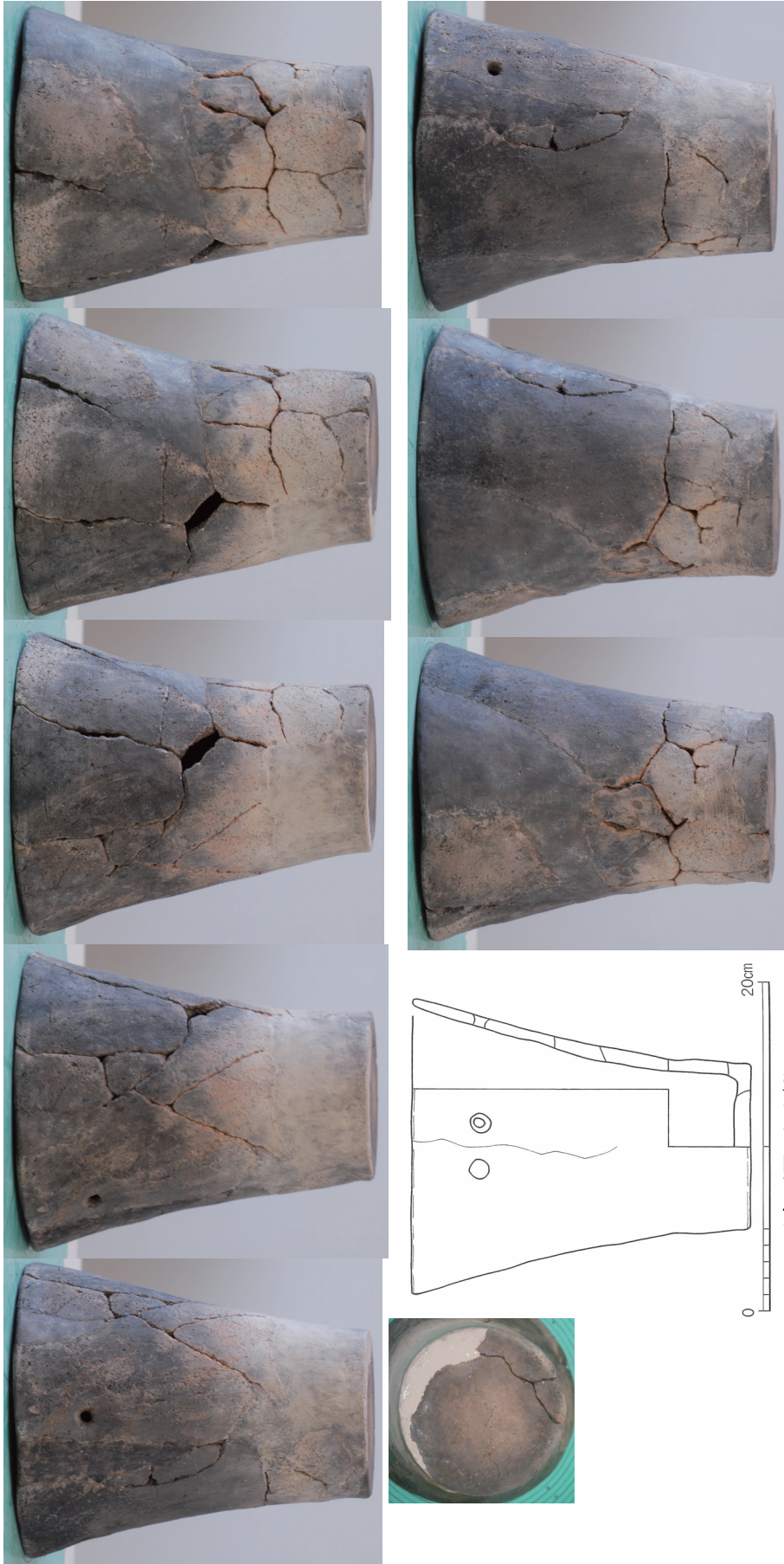
(実測図 : S=1/4)



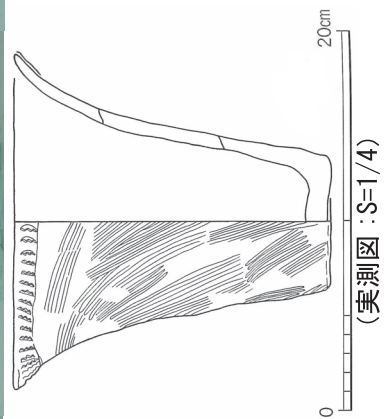


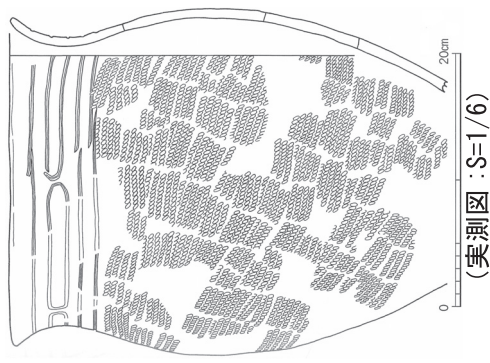
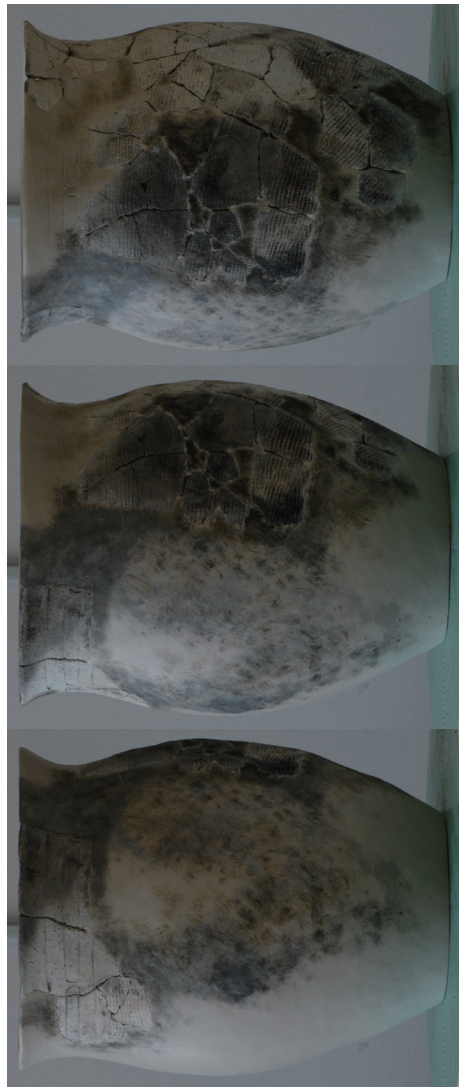
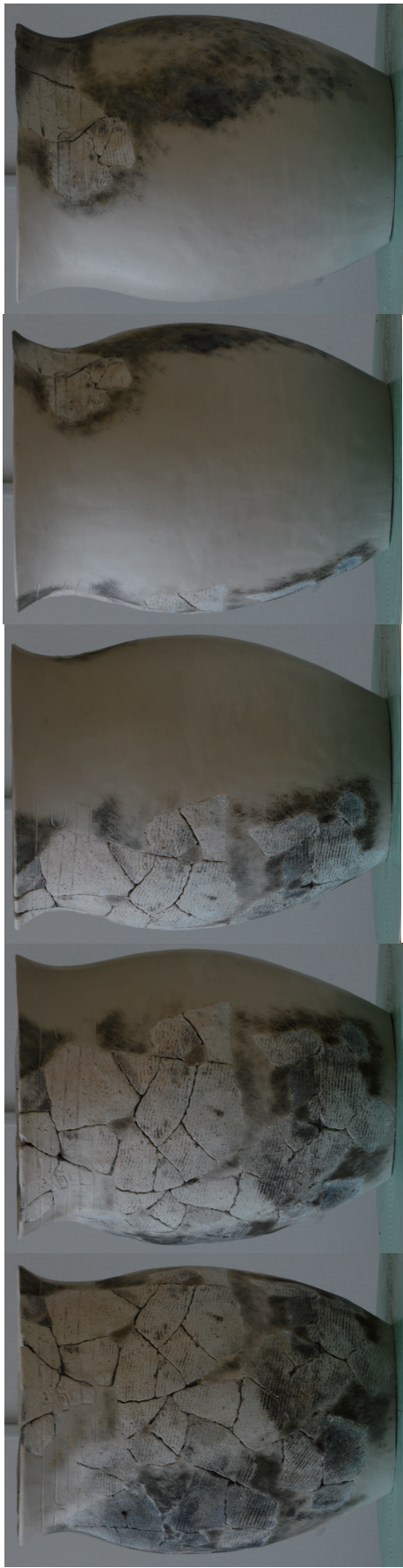
(実測図 : S=1/6)



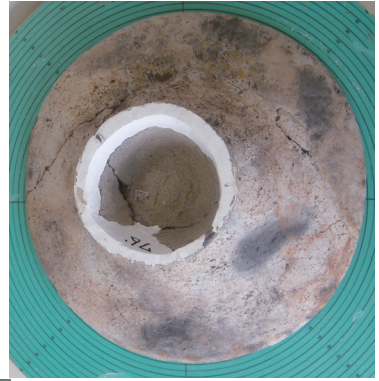
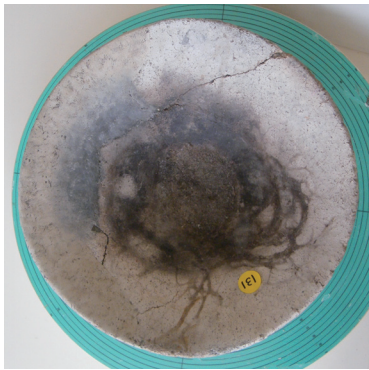
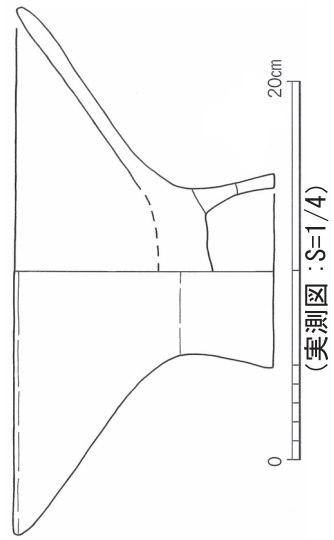


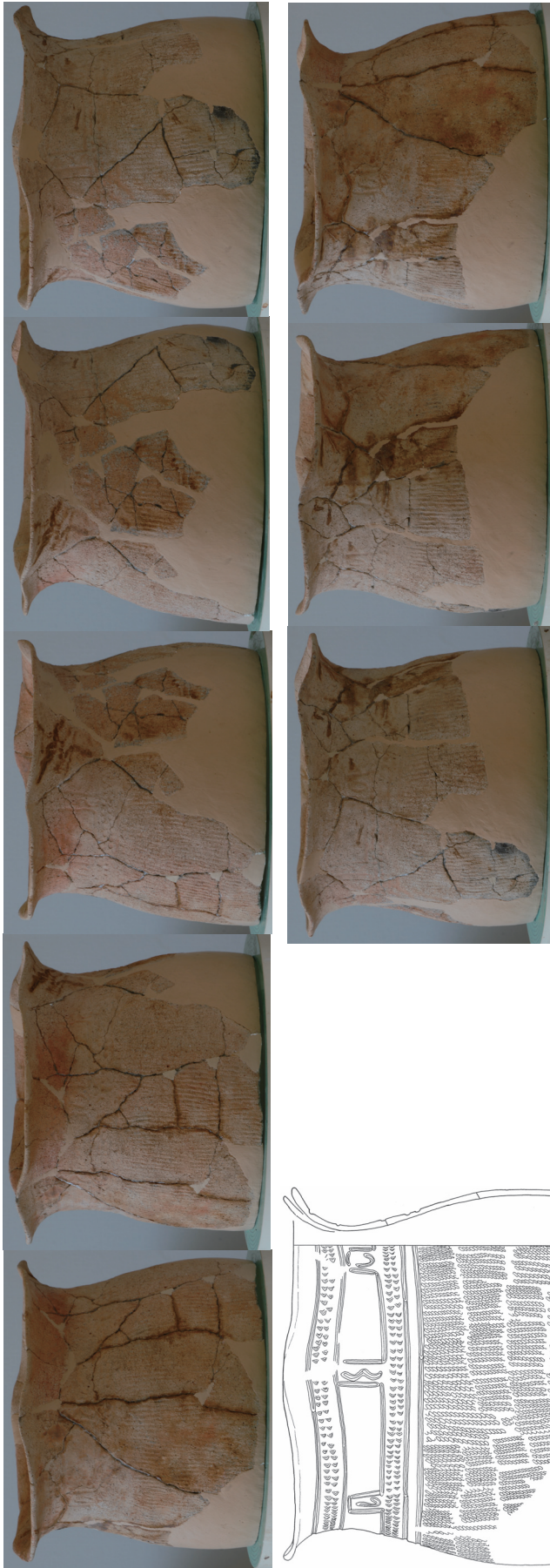
『桜町遺跡』(2006) 舟岡地区 128



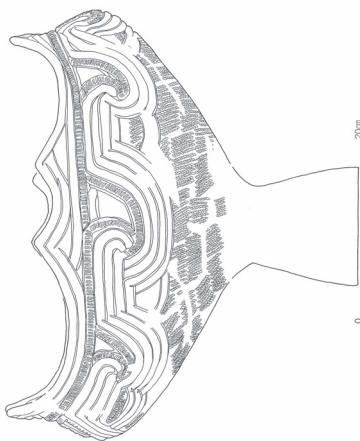
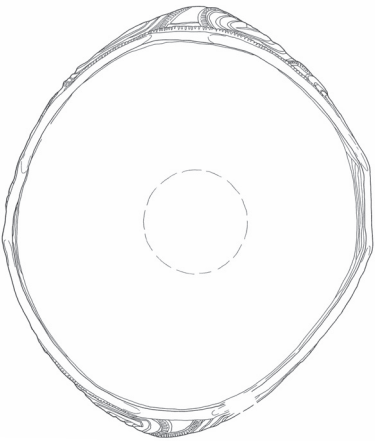
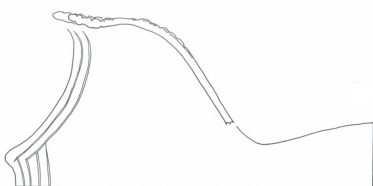
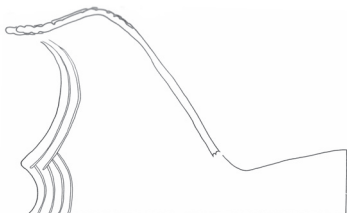


(実測図 : S=1/6)

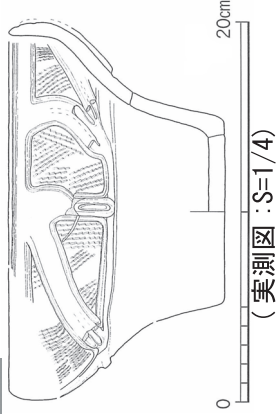


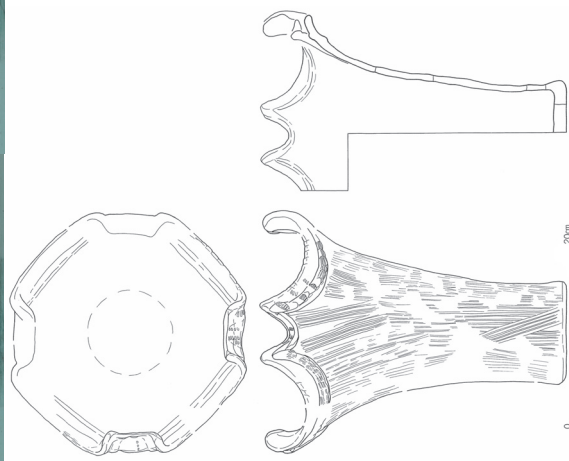
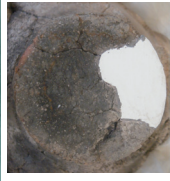


(美測図 : S=1/6)

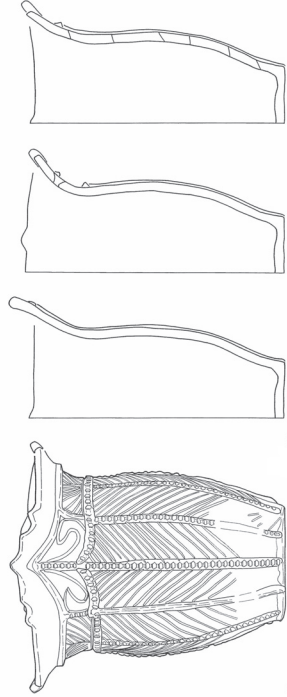
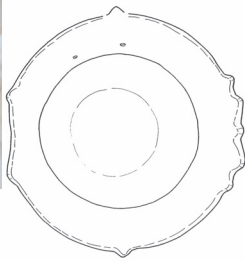


0 50mm
(実測図 : S=1/8)





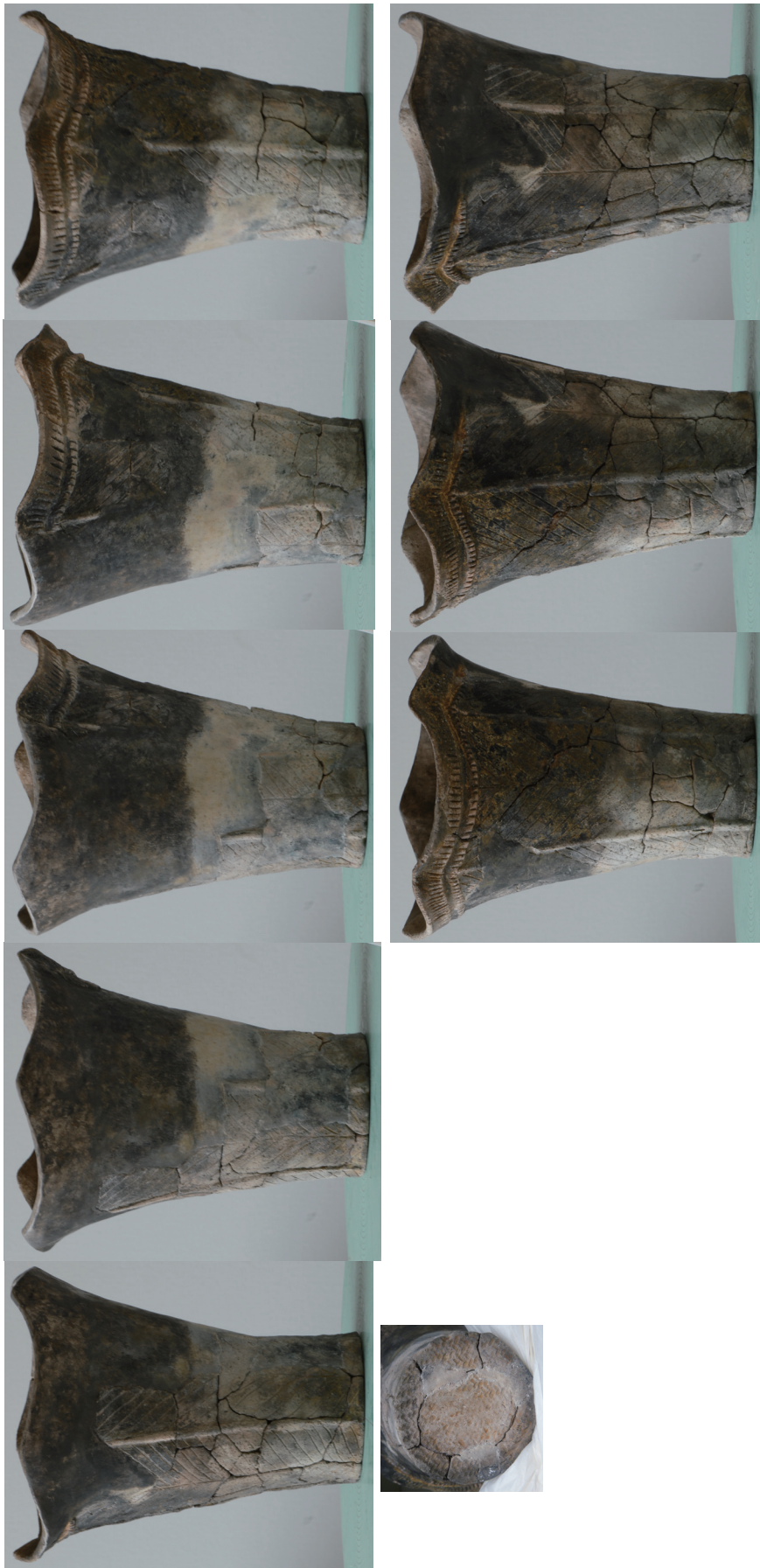
0 200mm
(美測図 : S=1/8)



0 20cm

(美測図 : S=1/6)

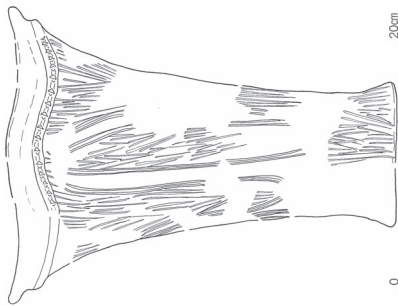
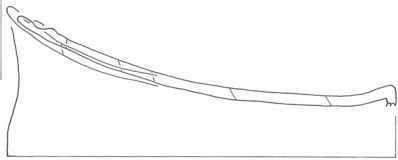
『桜町遺跡』(2006) 舟岡地区 169



『桜町遺跡』(2006) 舟岡地区 176

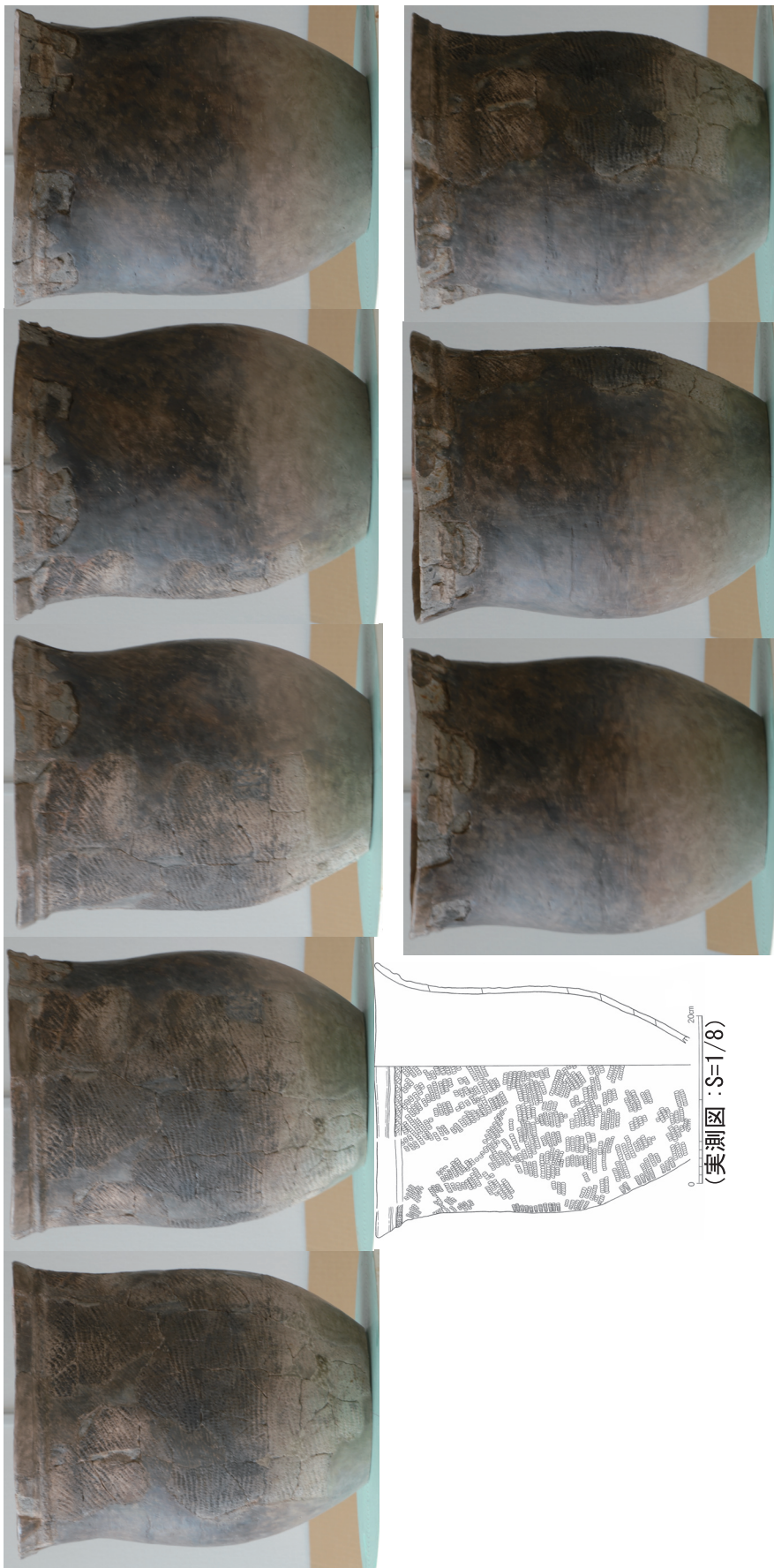


『桜町遺跡』(2006) 舟岡地区 178



(実測図 : S=1/6)



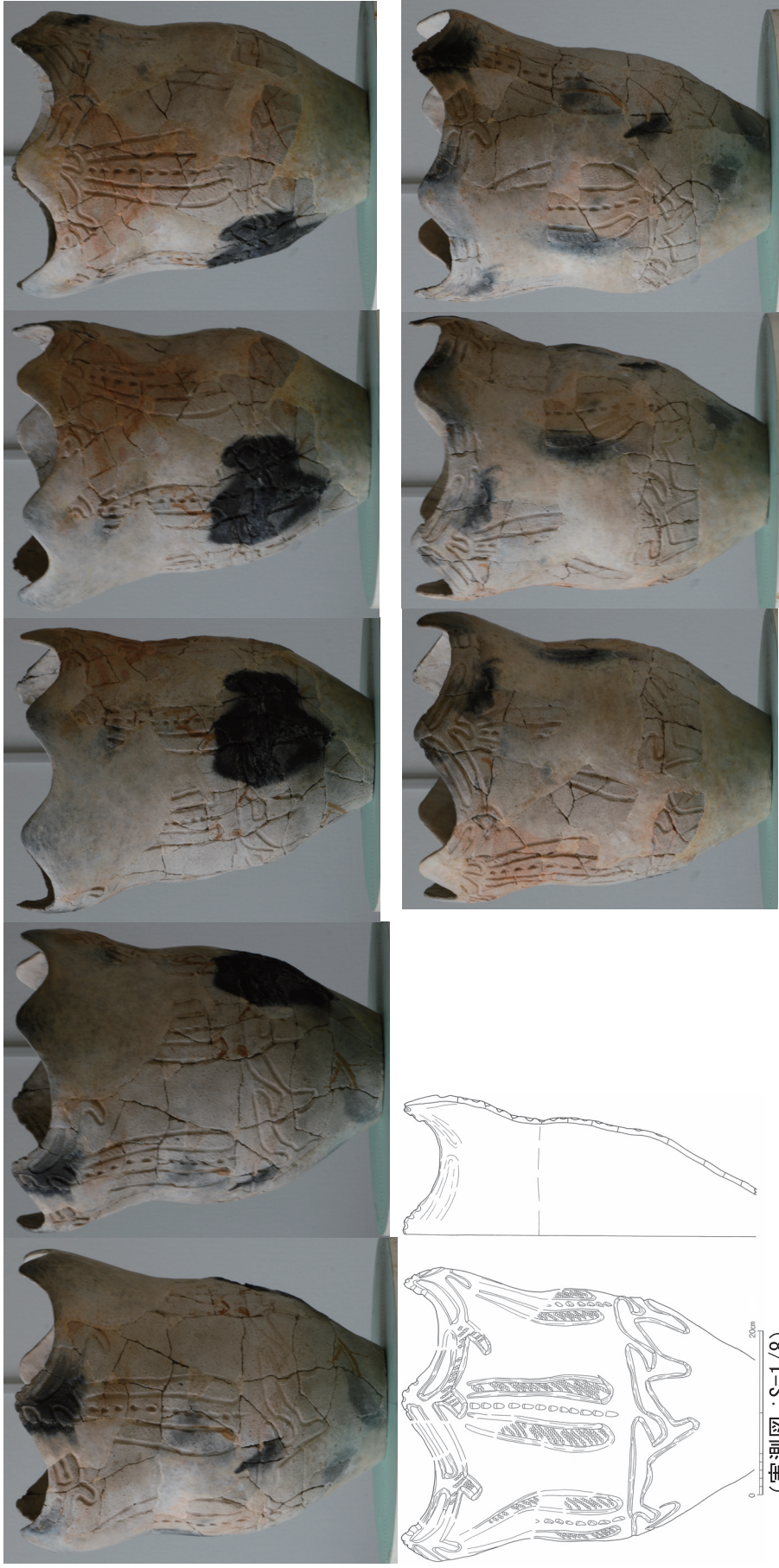


『桜町遺跡』(2006) 舟岡地区 190

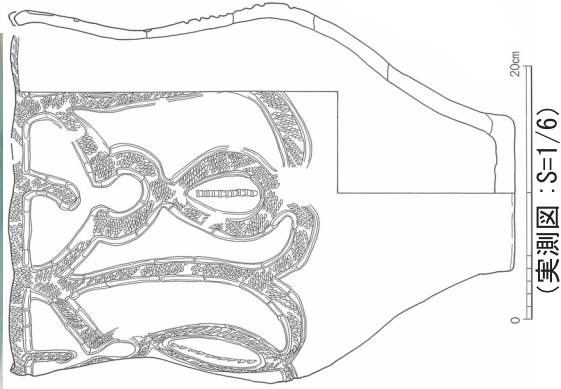


『桜町遺跡』(2006) 舟岡地区 191





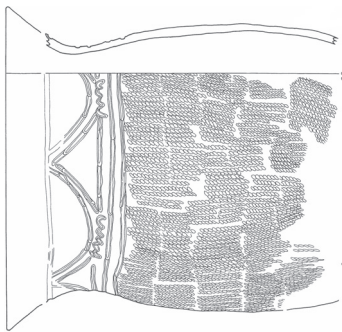
『桜町遺跡』(2006) 舟岡地区 204



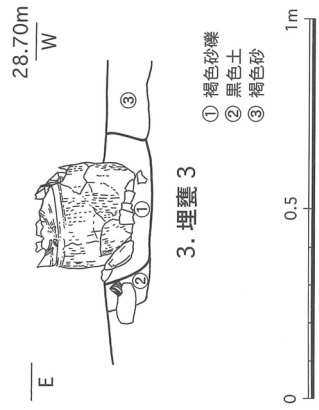
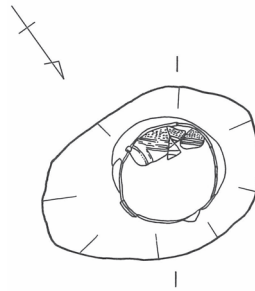
『桜町遺跡』(2006) 舟岡地区 209



北西



(土器実測図：S=1/8)



(北西から)



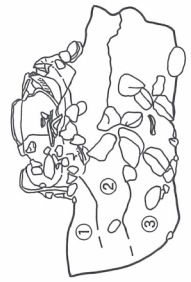
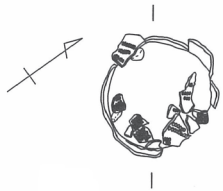
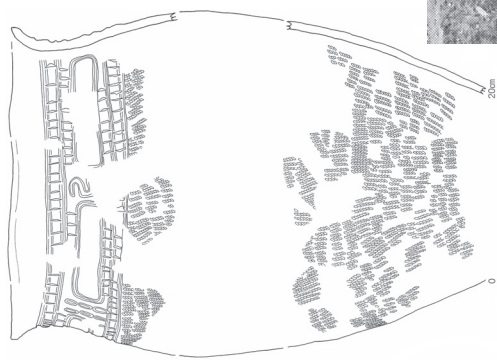
(北西から)



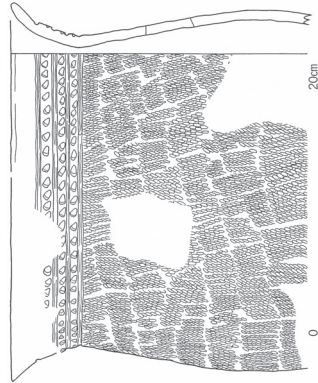
(北から)



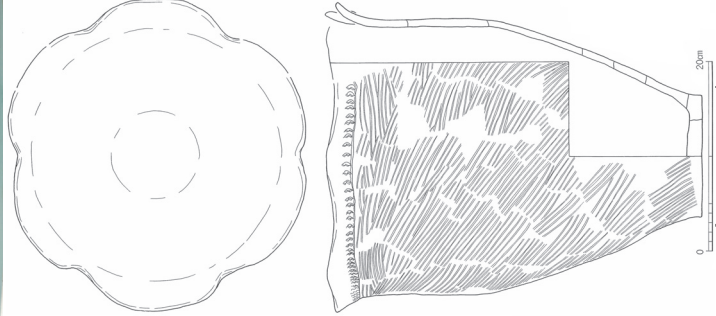
南西



- ① 明褐色砂
 - ② 黒色粘質土
 - ③ 褐色砂
- 0 0.5 1m



(土器実測図：S=1/6)

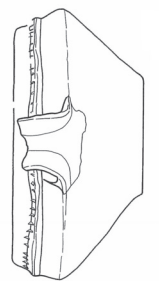
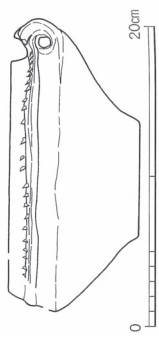
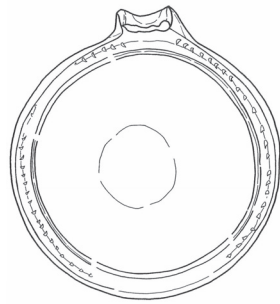
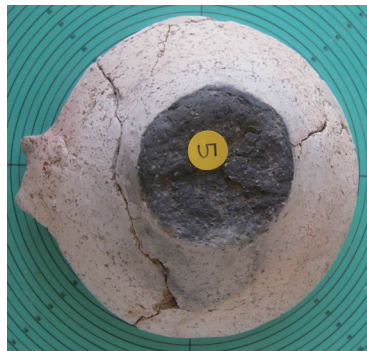
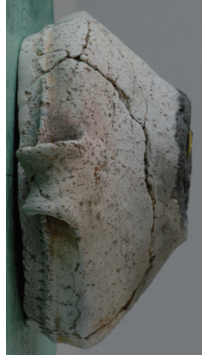


(実測図：S=1/8)

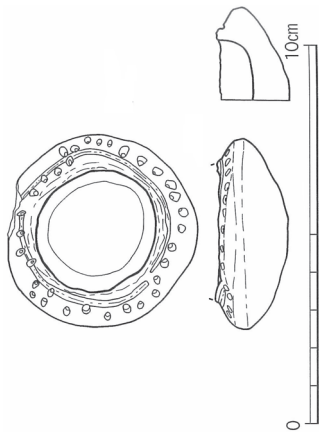
『桜町遺跡』(2006) 舟岡地区 224



『桜町遺跡』(2006) 舟岡地区 225

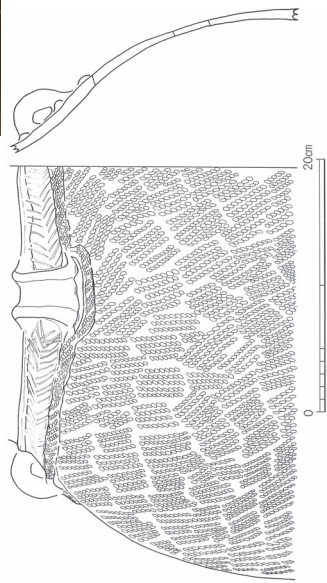
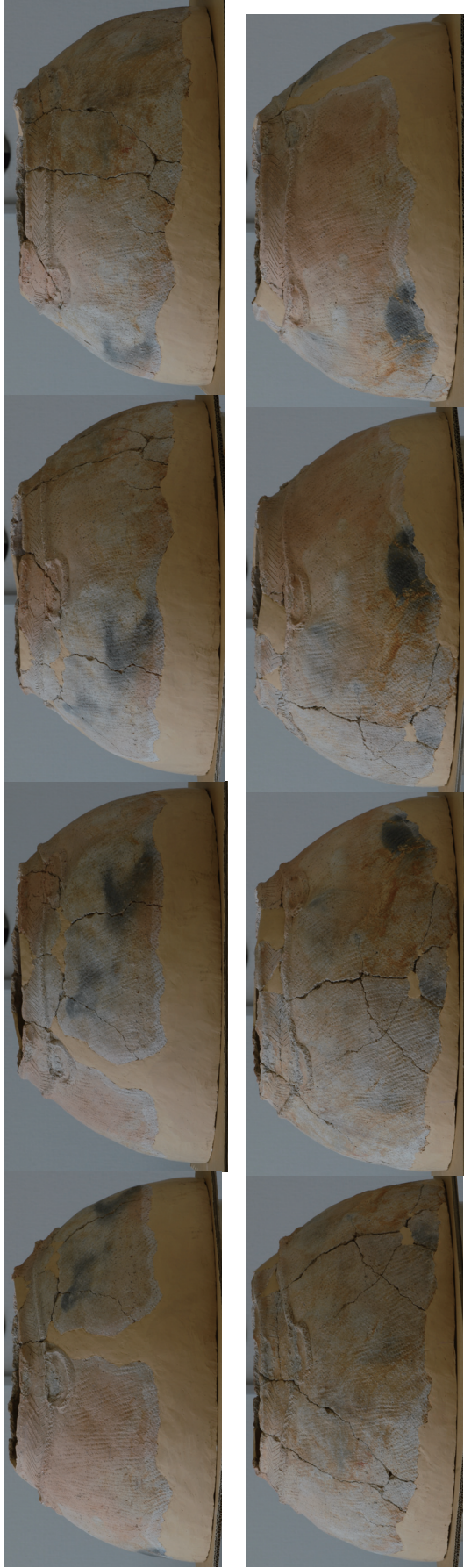


(実測図 : S=1/5)

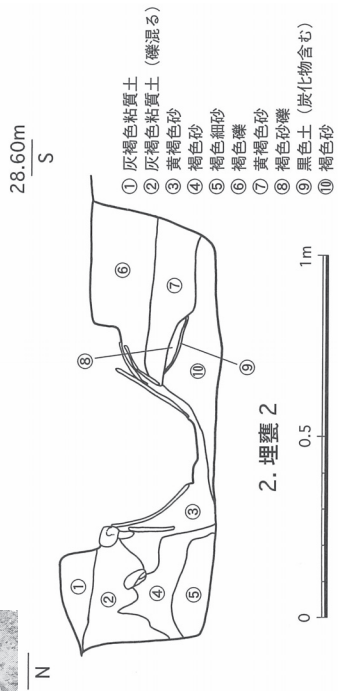
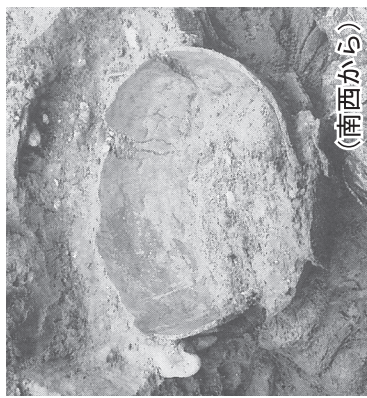
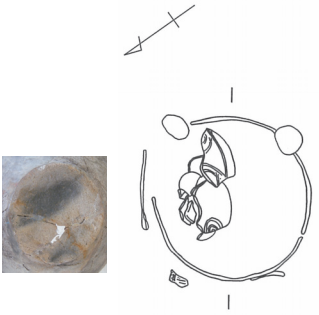
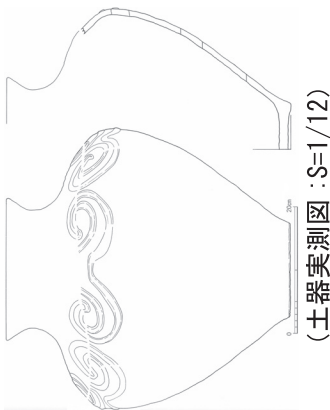
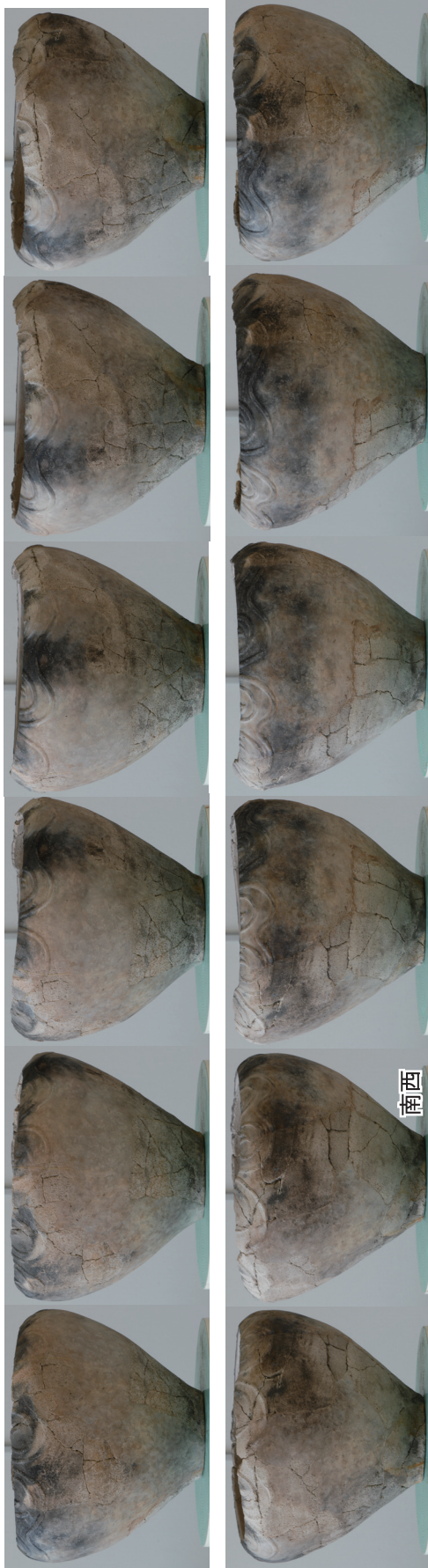


(美測図：S=1/2)

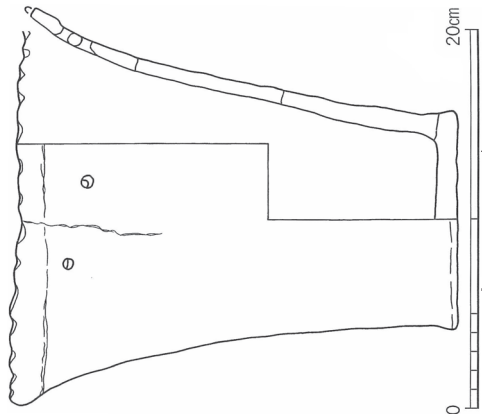




(実測図 : S=1/6)

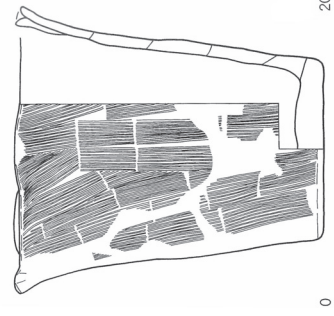
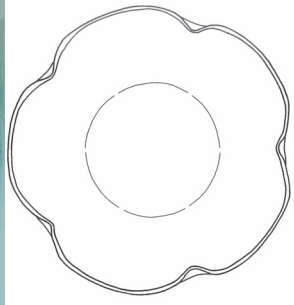


『桜町遺跡』(2006) 舟岡地区 237

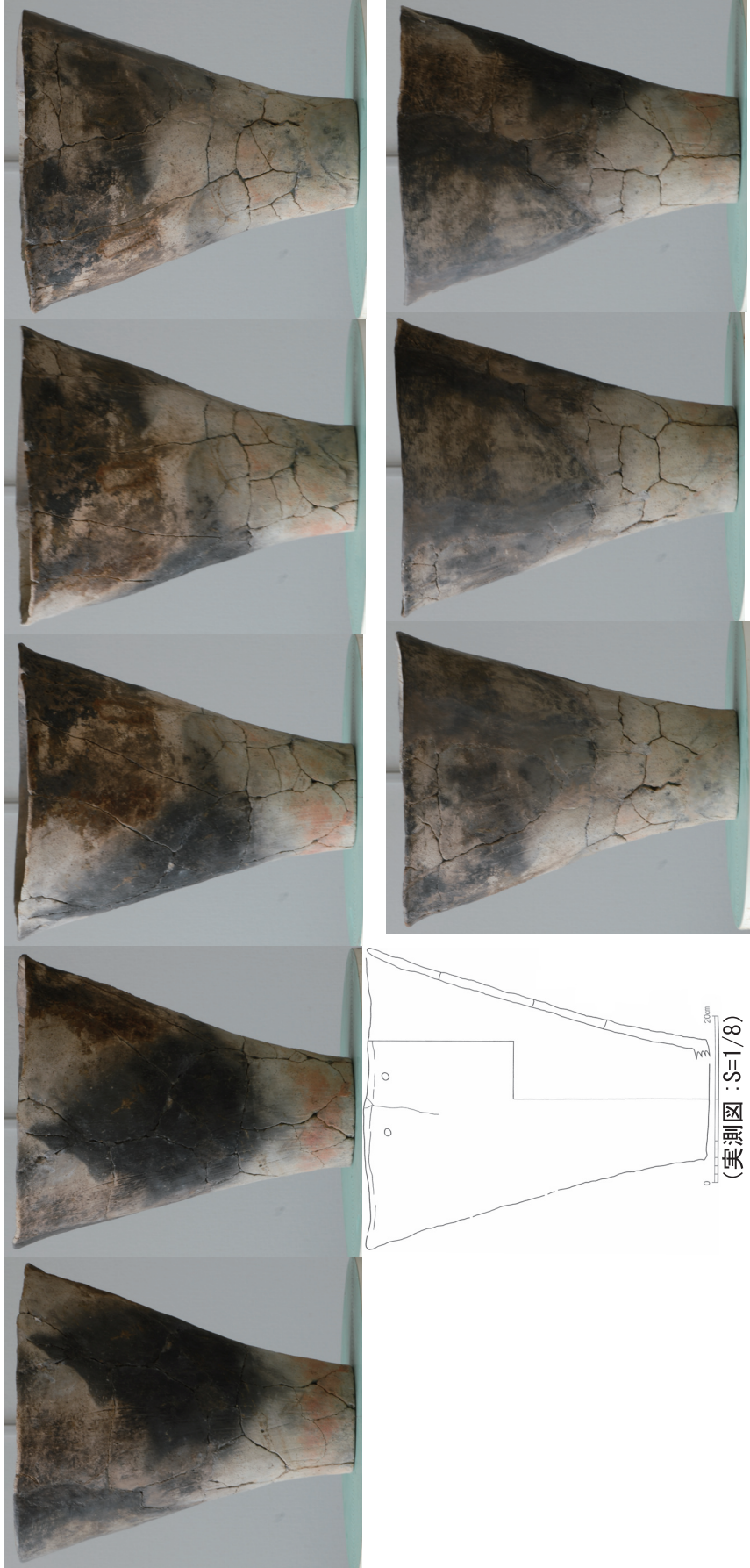


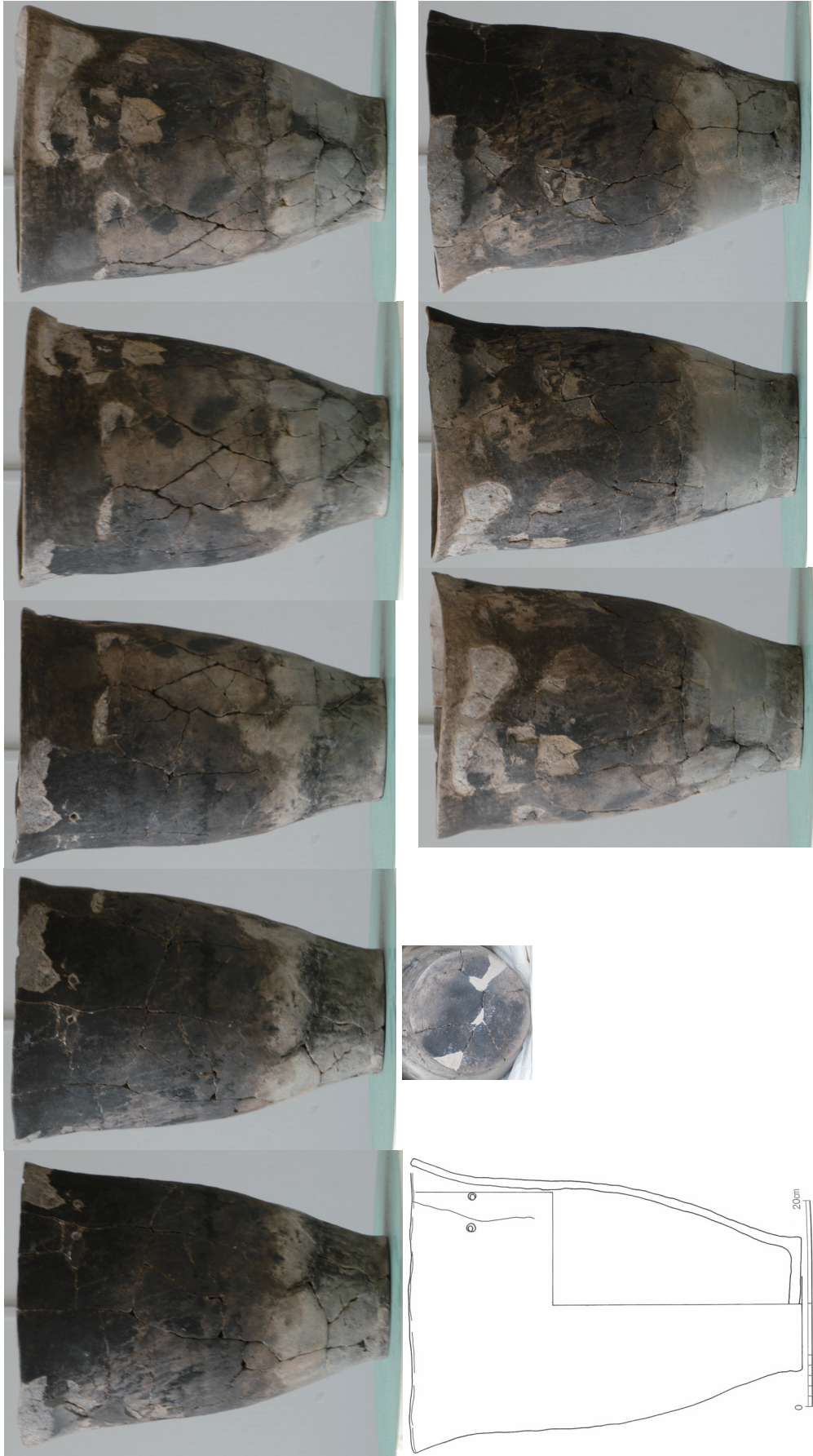
(実測図 : S=1/6)

『桜町遺跡』(2006) 舟岡地区 240



(実測図 : S=1/5)

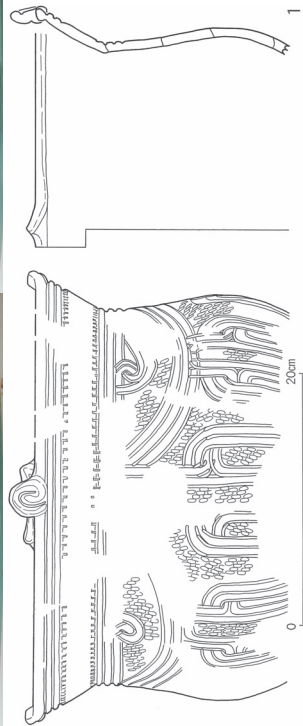




『桜町遺跡』(2006) 舟岡地区 250



『桜町遺跡』(2006) 舟岡地区 261

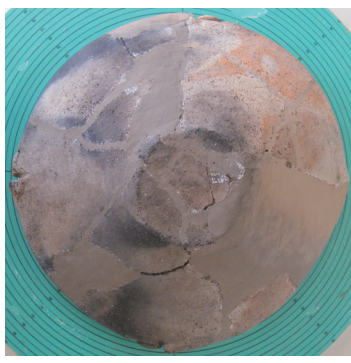
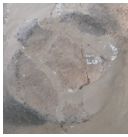
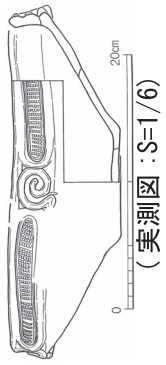
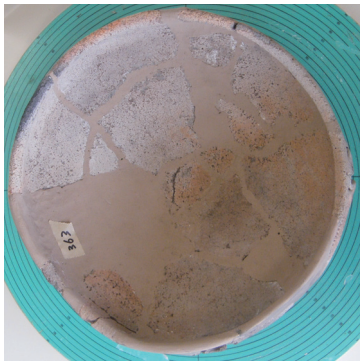


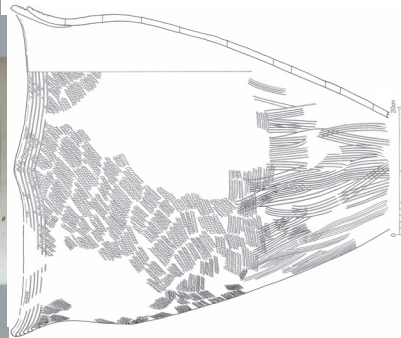
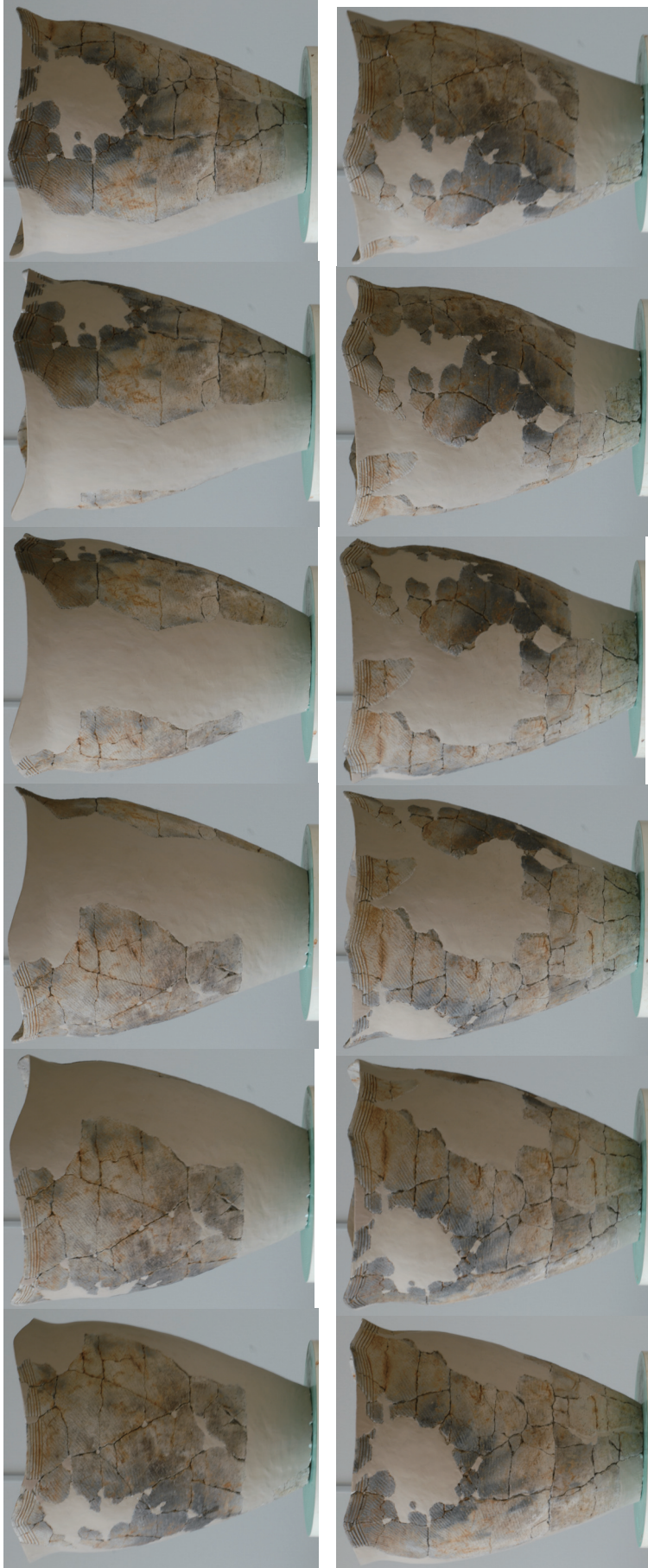
(実測図 : S=1/6)

『桜町遺跡』(2006) 中出地区 1



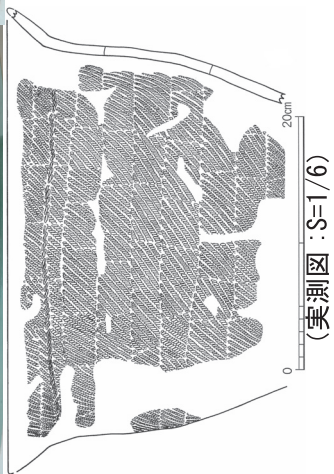
『桜町遺跡』(2006) 中出地区 2



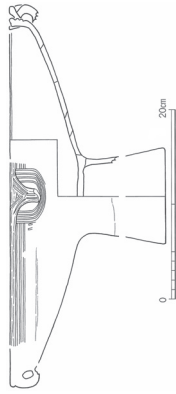


(実測図 : S=1/12)

『桜町遺跡』(2006) 中出地区 4



『桜町遺跡』(2006) 中出地区 5

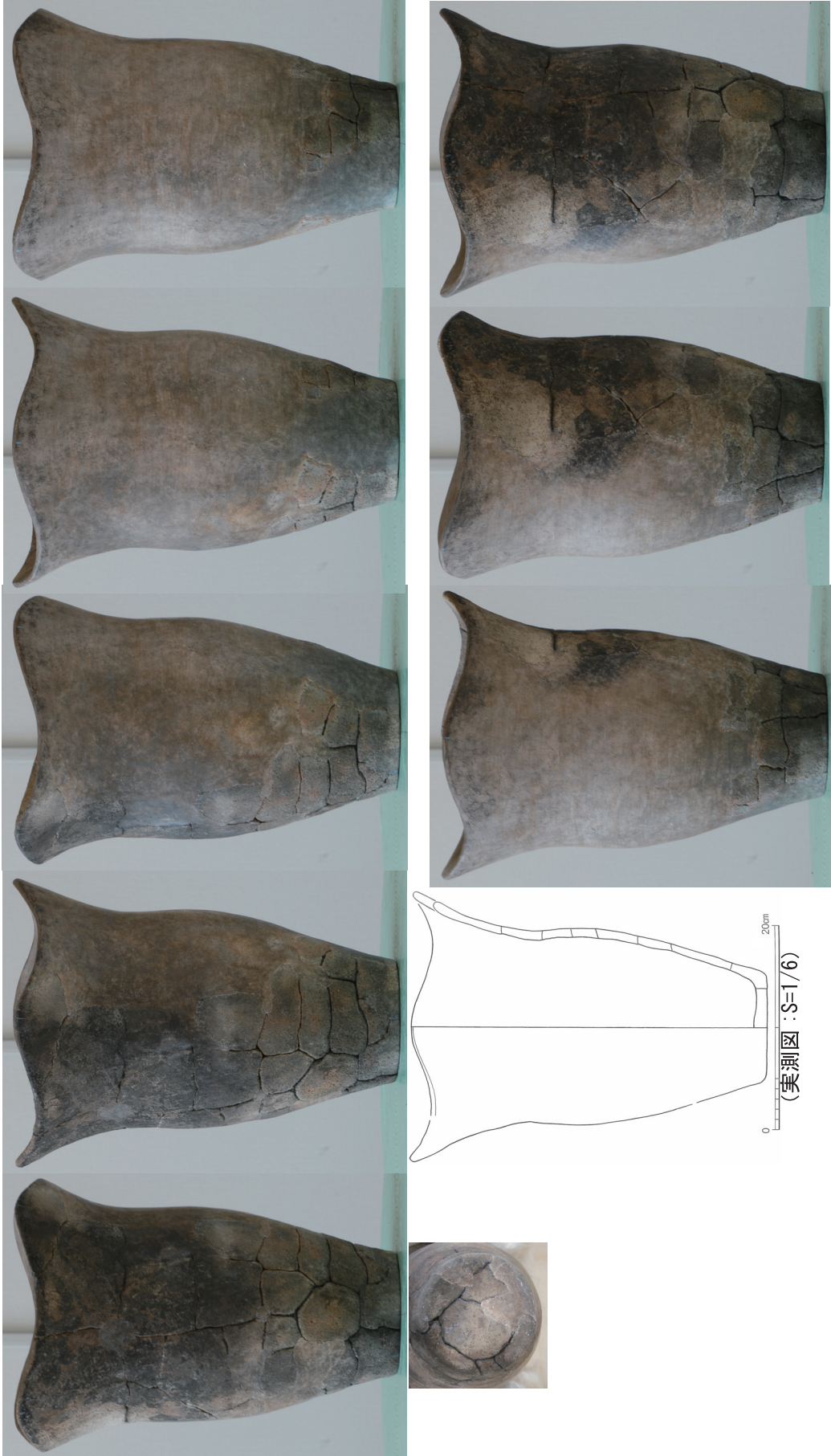


(土器実測図 : S=1/8)

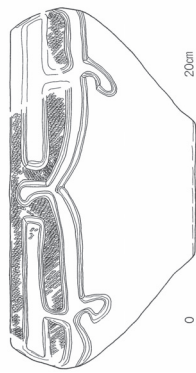
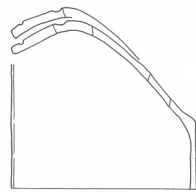
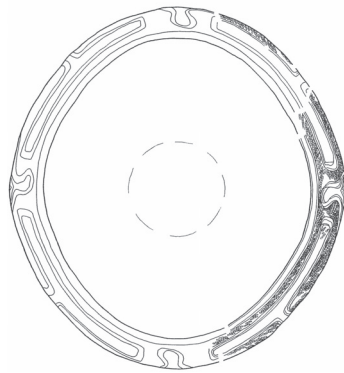




『桜町遺跡』(2006) 中出地区 7



『桜町遺跡』(2006) 中出地区 9



0 20cm
(実測図 : S=1/6)