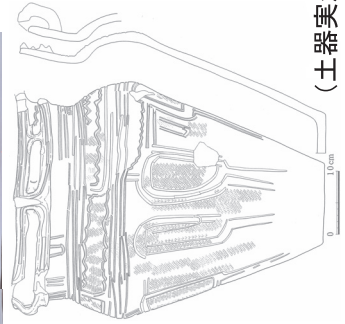
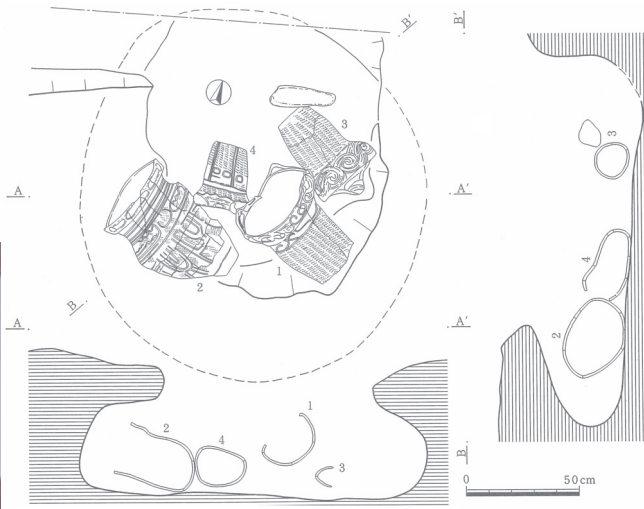
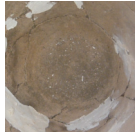


(土器実測図 : S=1/10)

浄法寺遺跡  
16号土抗1番

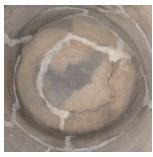
『浄法寺遺跡』(1997)



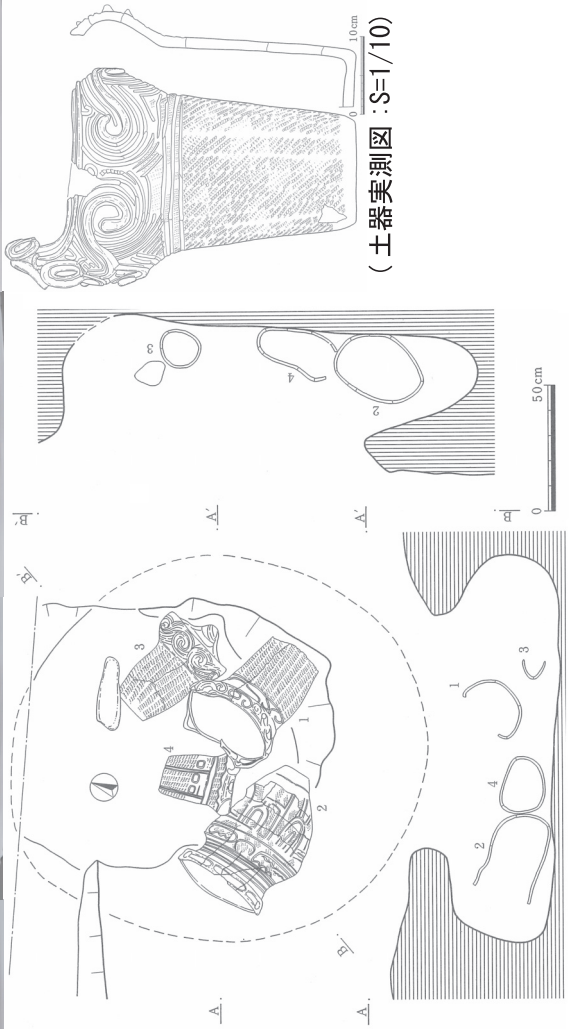
浄法寺遺跡  
16号土抗2番

(土器実測図 : S=1/12)

『浄法寺遺跡』(1997)



戻



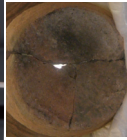
(土器実測図 : S-I/10)

浄法寺遺跡  
16号土坑3番

『浄法寺遺跡』(1997)



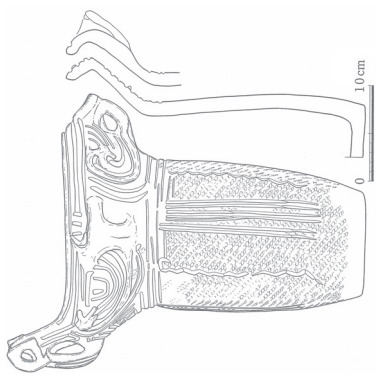
民



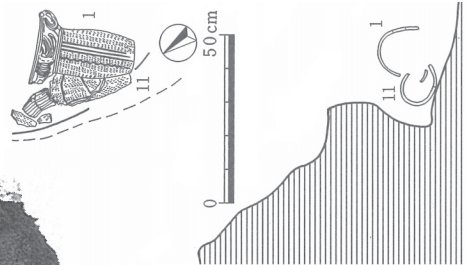
(北東から) C. C.



(南西から) P. P.

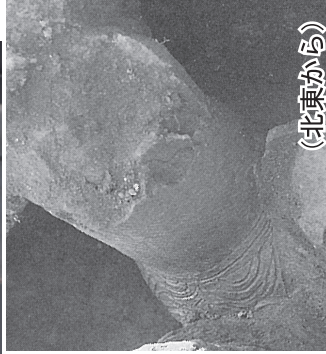


(土器実測図 : S=1/8)

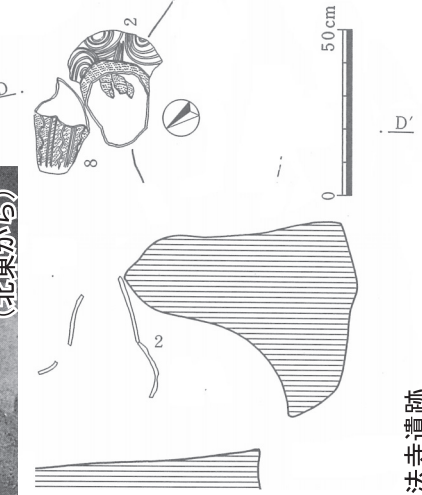


浄法寺遺跡  
18号土抗1番

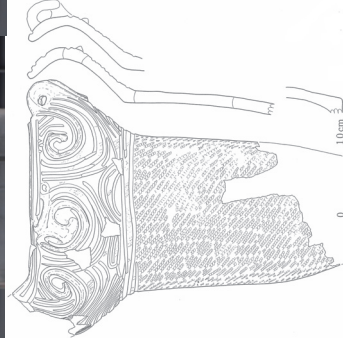
『浄法寺遺跡』(1997)



(北東から)



(南からを天地逆転)



(土器実測図：S=1/10)

浄法寺遺跡  
18号土抗2番

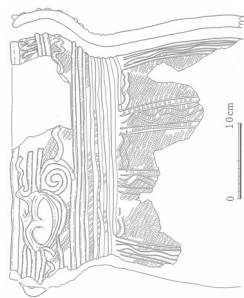
『浄法寺遺跡』(1997)



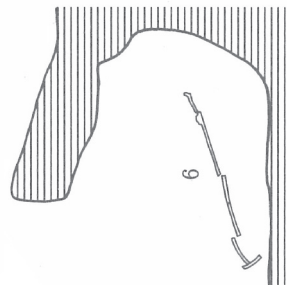
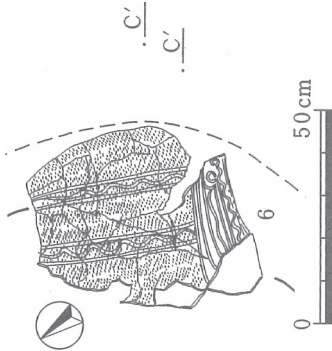
図



(北東から)

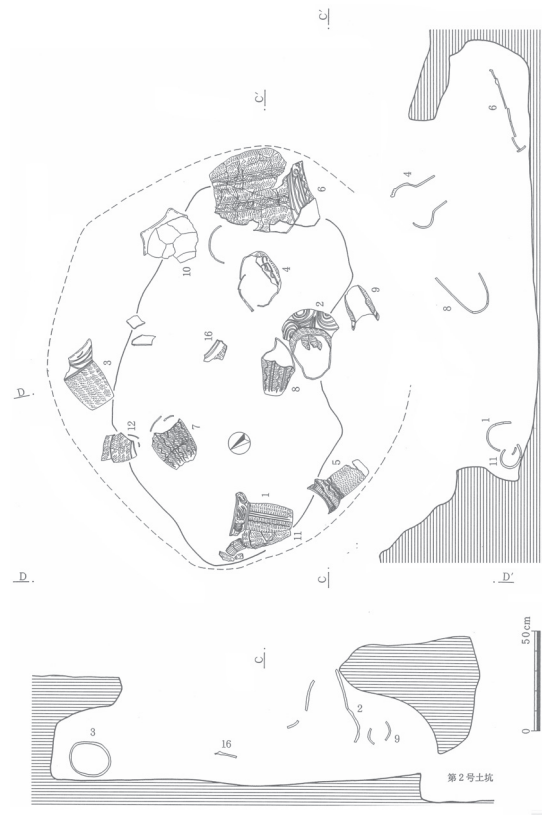


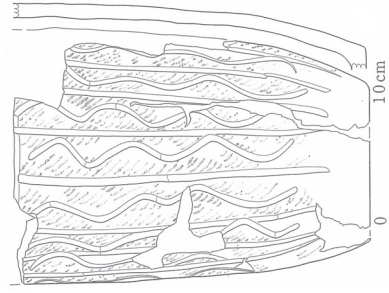
(土器実測図 : S=1/10)



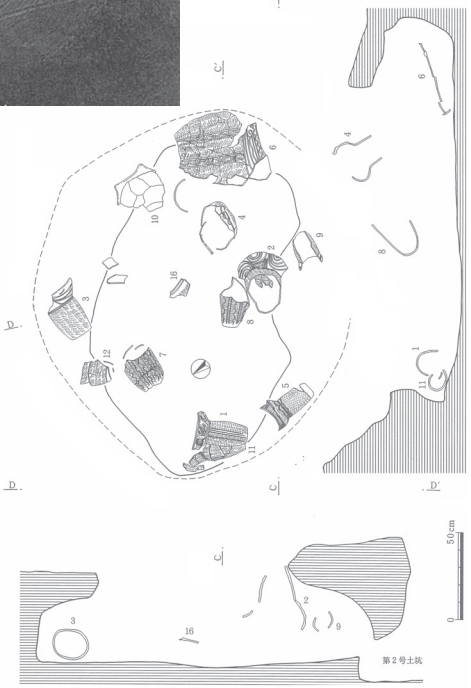
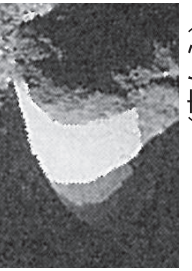
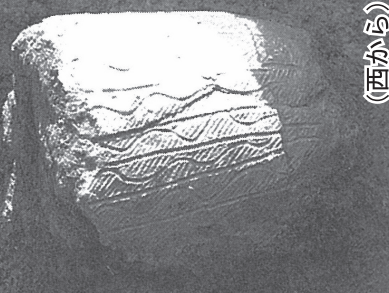
浄法寺遺跡  
18号土抗 6番

『浄法寺遺跡』(1997)

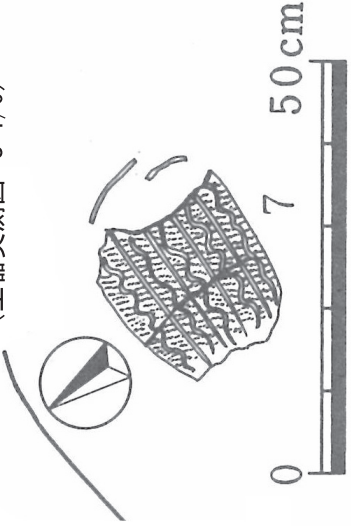




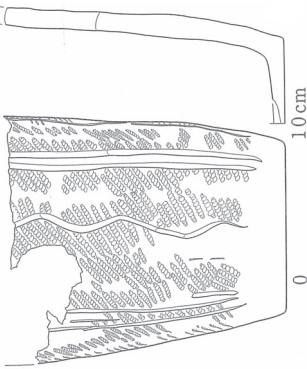
(土器実測図 : S=1/6)



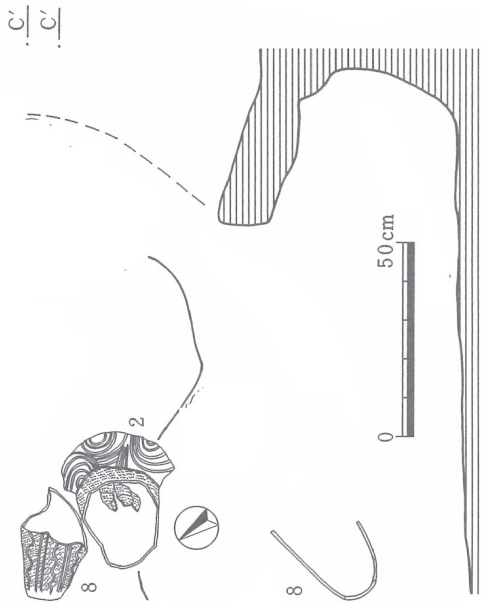
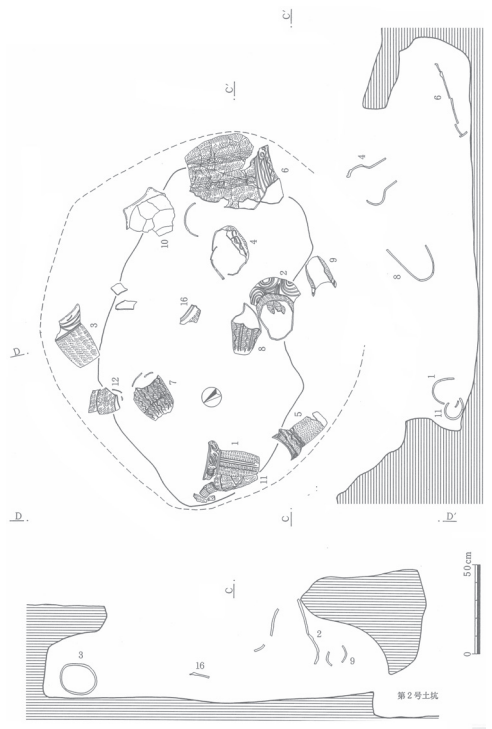
浄法寺遺跡  
18号土坑7番



『浄法寺遺跡』(1997)



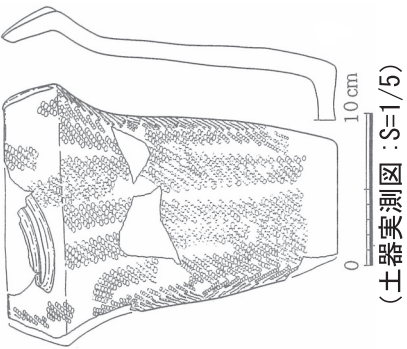
(土器実測図：S=1/5)



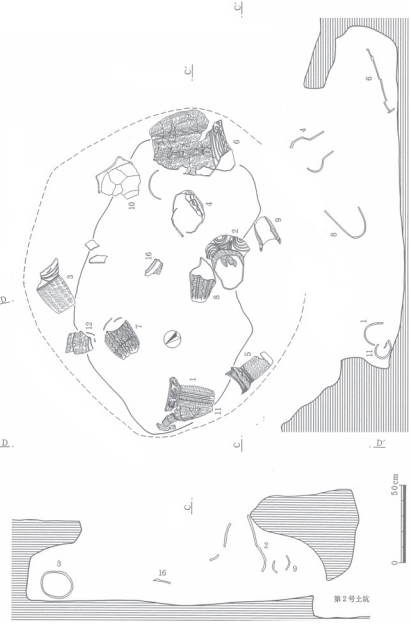
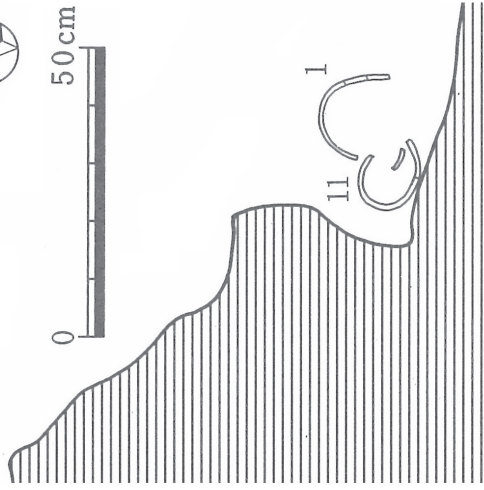
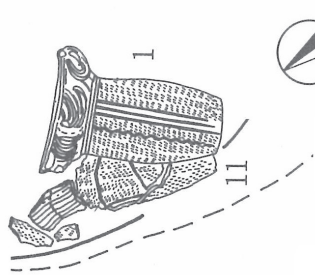
浄法寺遺跡  
18号土坑8番

『浄法寺遺跡』(1997)





c  
|  
c

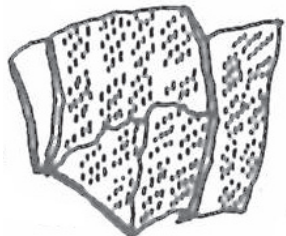
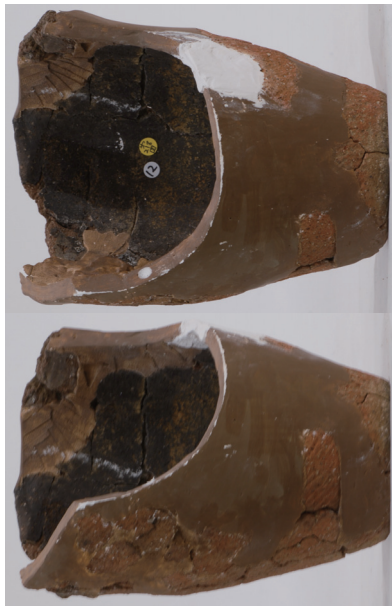


浄法寺遺跡  
18号土坑 11番

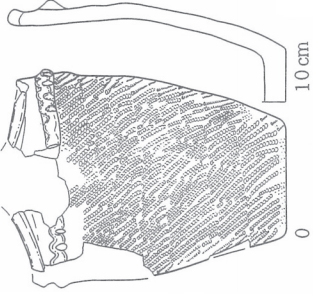
『浄法寺遺跡』(1997)



天か



(下图を天地反転)



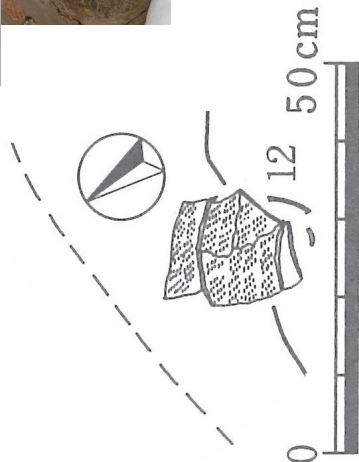
10 cm

(土器実測図 : S=1/5)



第2号土坑

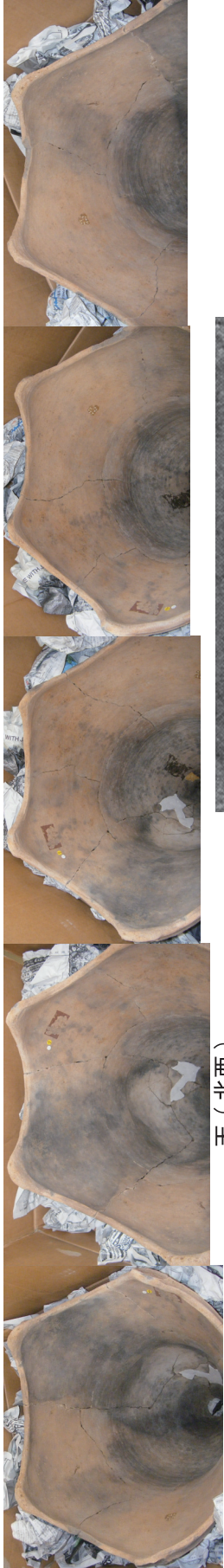
50 cm



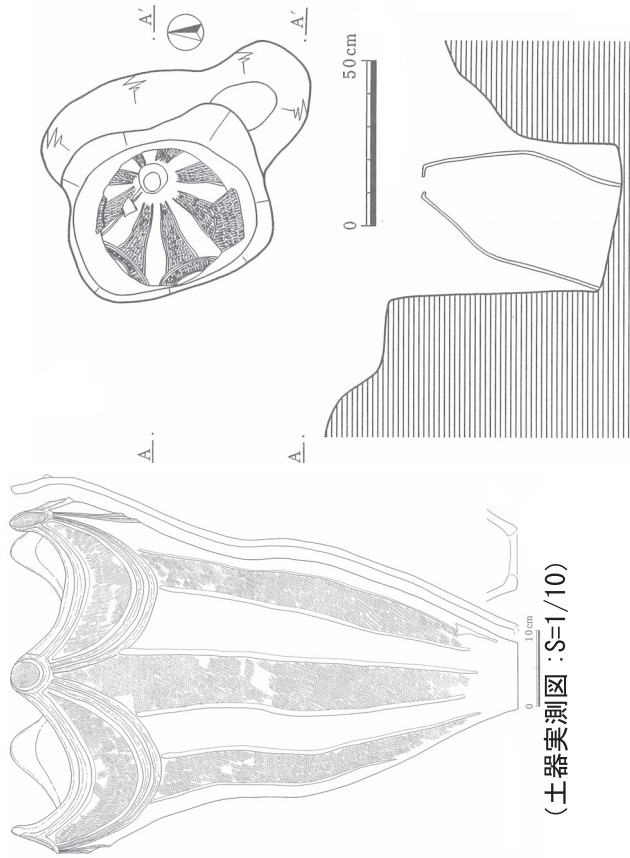
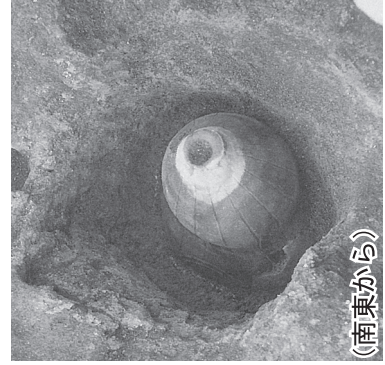
12 50 cm

浄法寺遺跡  
18号土坑 12番

『浄法寺遺跡』(1997)



天(北西)



(土器実測図：S=1/10)

浄法寺遺跡  
2号埋甕

『浄法寺遺跡』(1997)