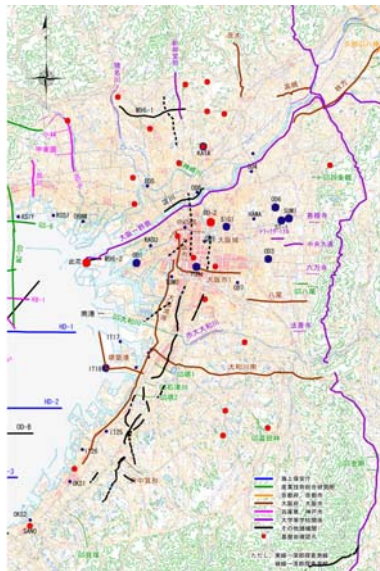
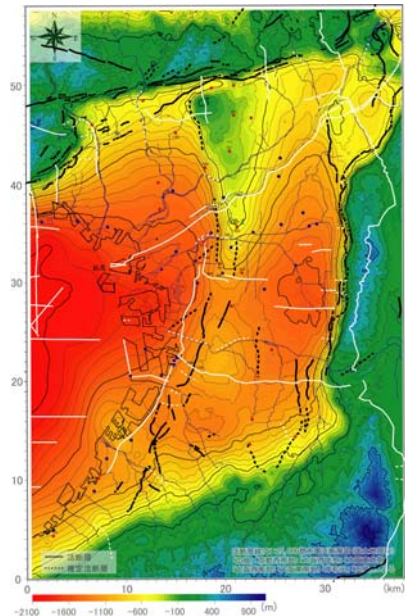


## 反射法地震探査から見た上町断層

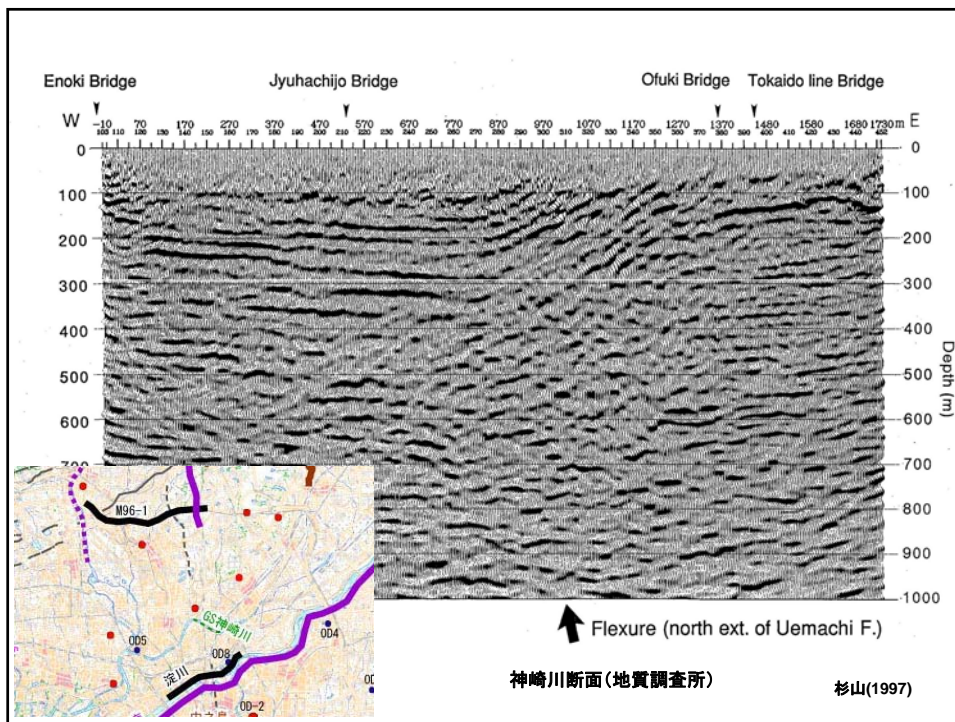
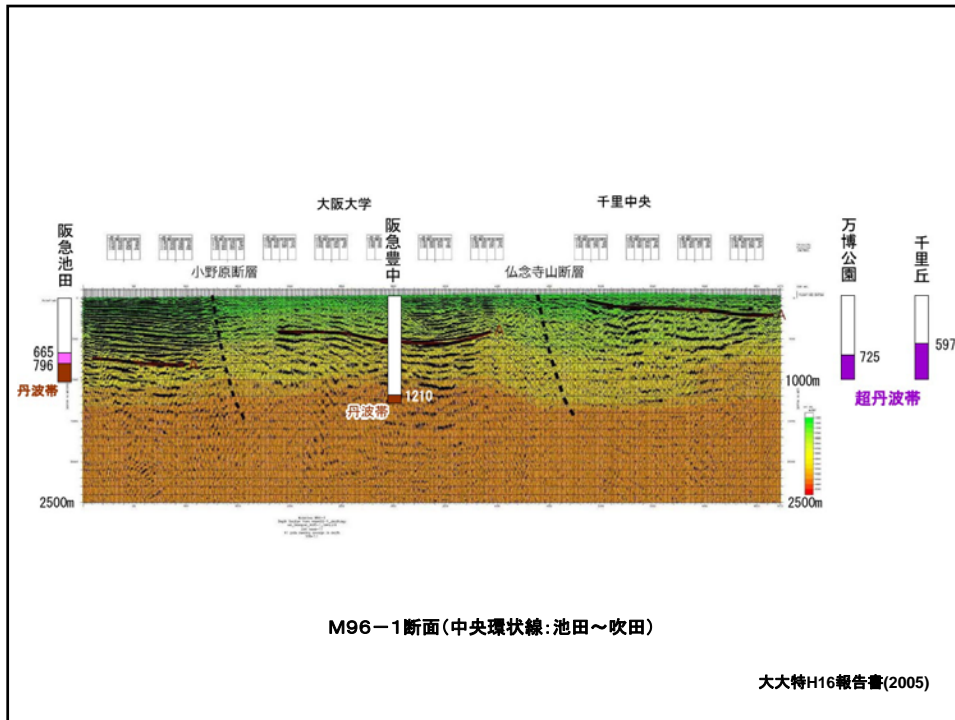
(株)阪神コンサルタンツ  
末廣匡基  
横田 裕

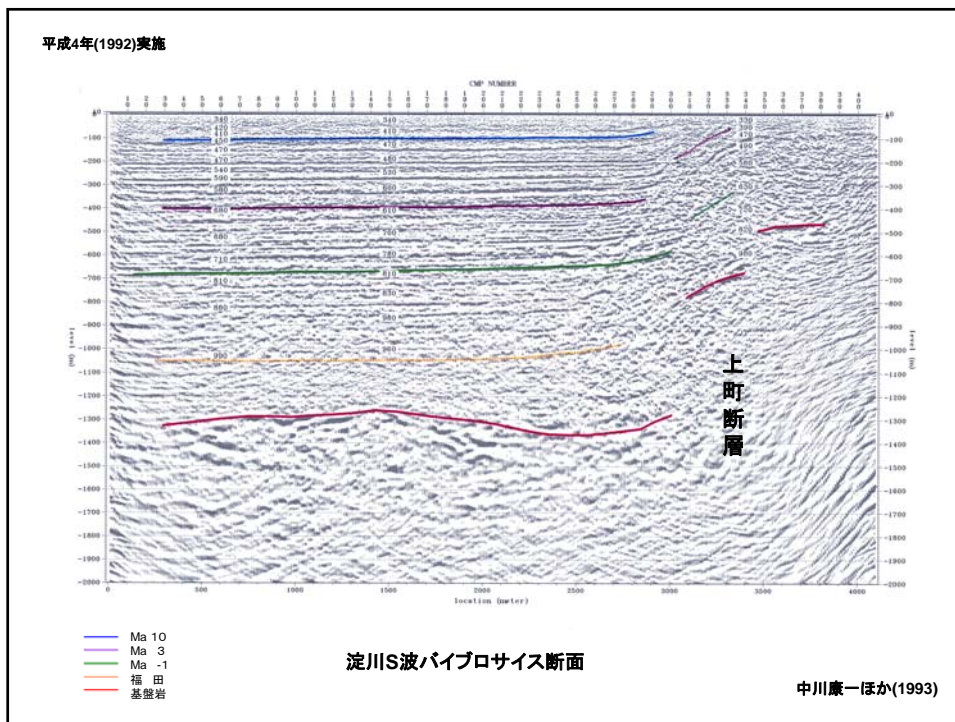
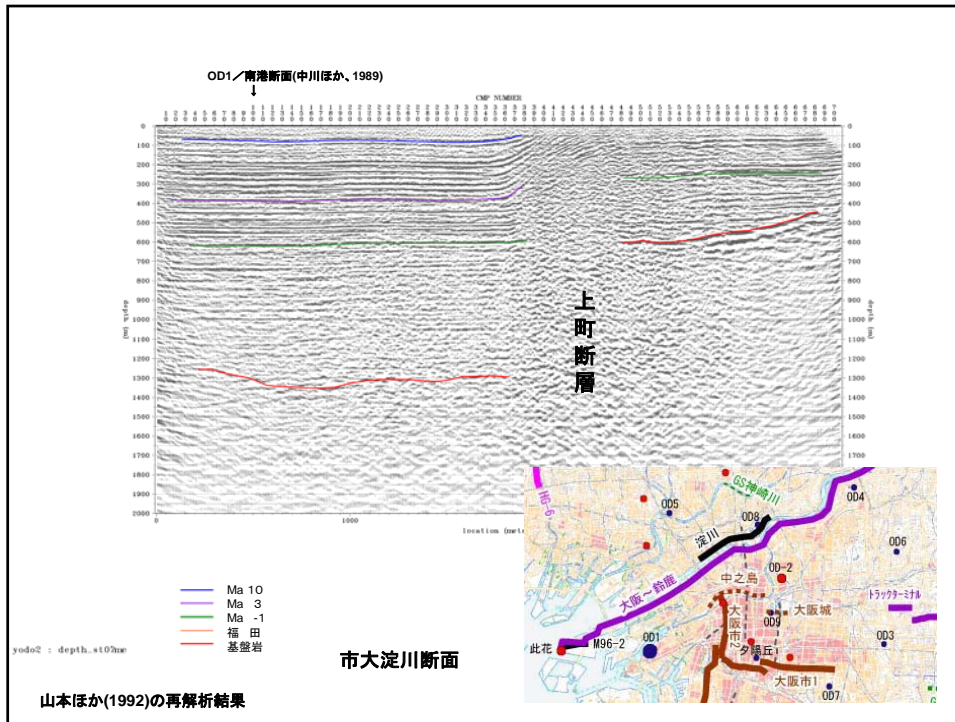


大阪平野の深部地質情報

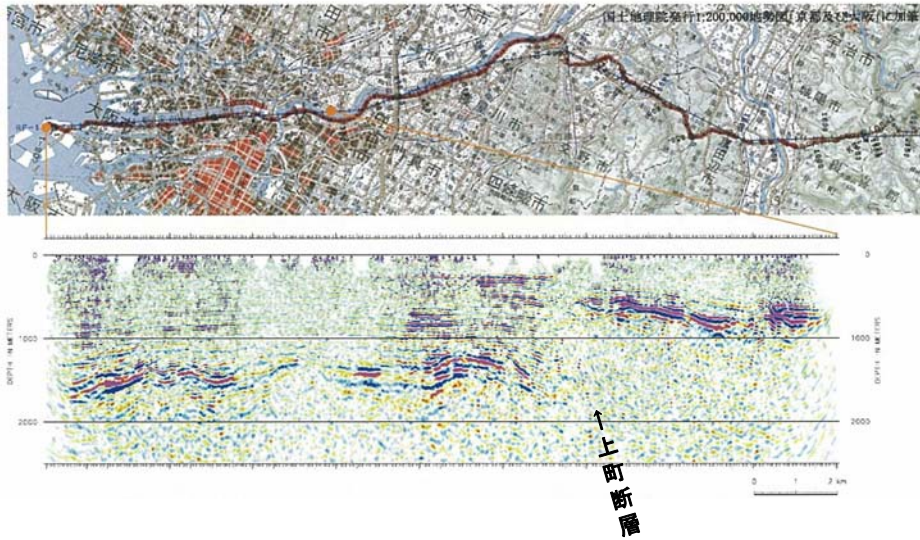


重力異常から推定した基盤岩深度分布



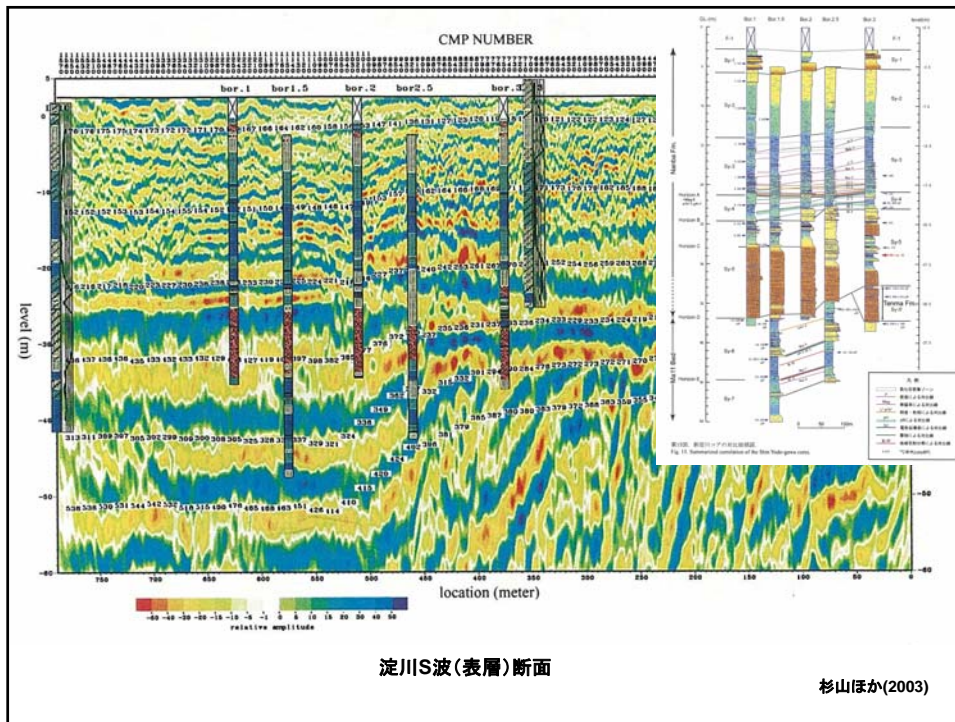


平成16年(2004)実施



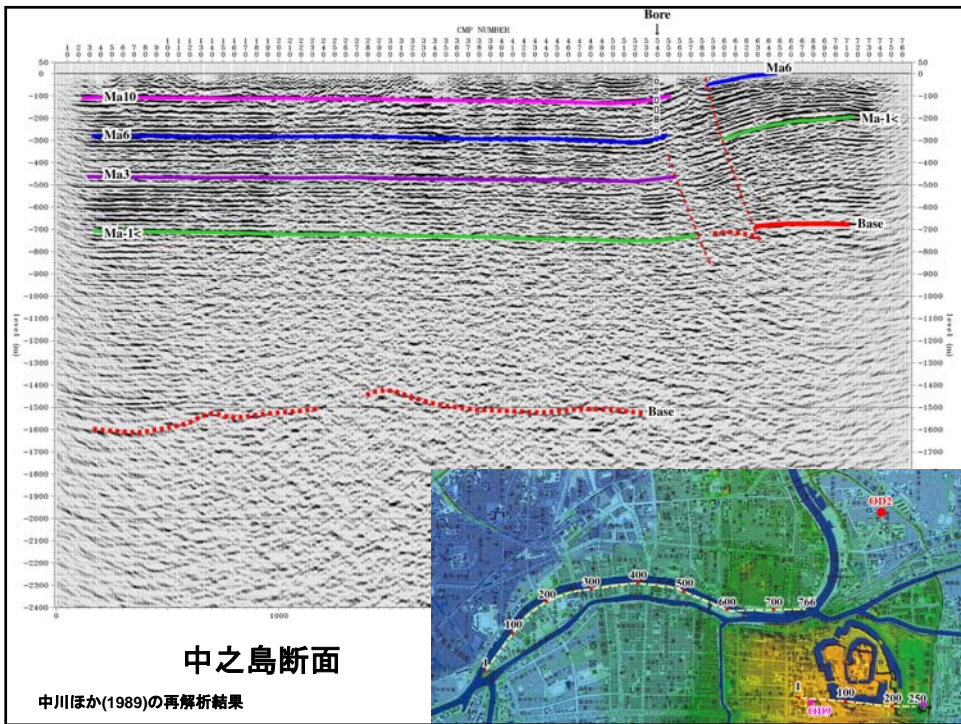
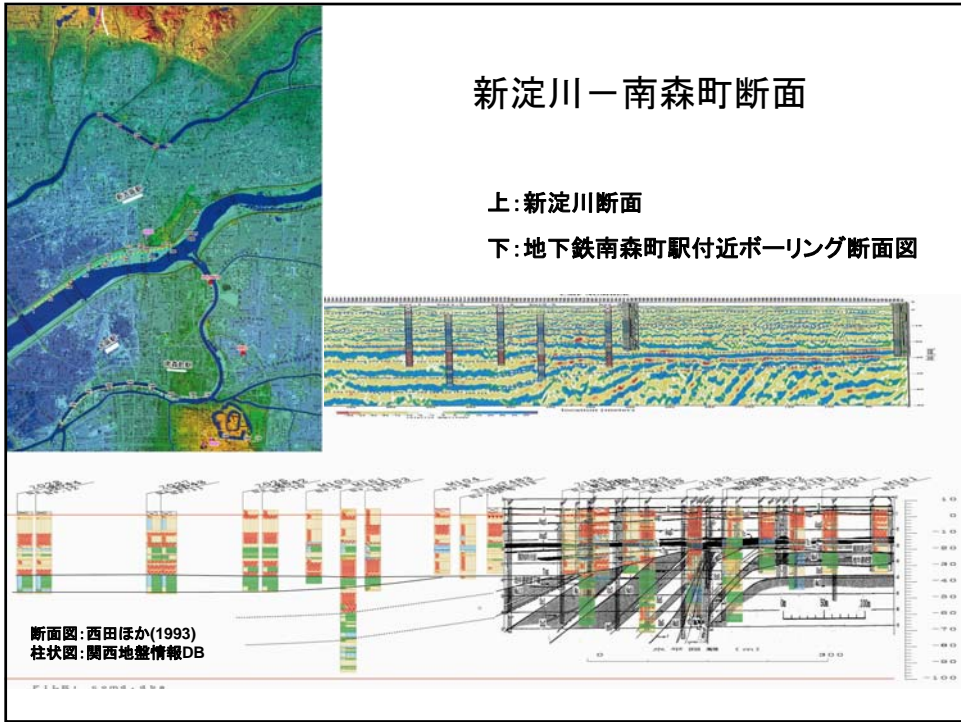
大大特(大阪—鈴鹿測線)探査断面(部分)

京都大学防災研(2011)

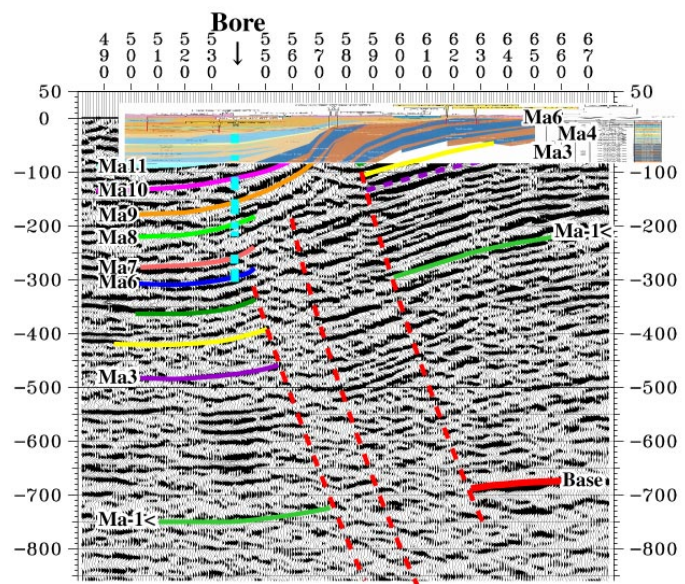
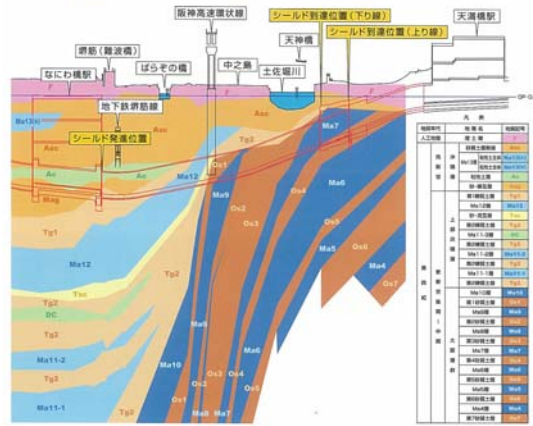
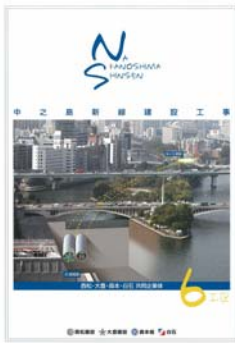
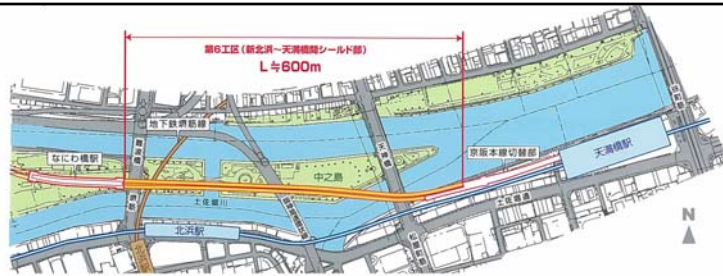


淀川S波(表層)断面

杉山ほか(2003)



# 京阪中之島線



中之島断面(拡大)+柱状図断面

