





Frontispiece, Tamo & Todoroki Shell-mound.

卷首圖版 津雲及森貝塚發見裝飾品(一)

1 (津雲)

2 (津雲)

3 (津雲)

4 (津雲)

5 (津雲)

6 (津雲)

8 (森)

9 (森)

10 (森)



圖

版

PLATES

(谷山、桑名製版)



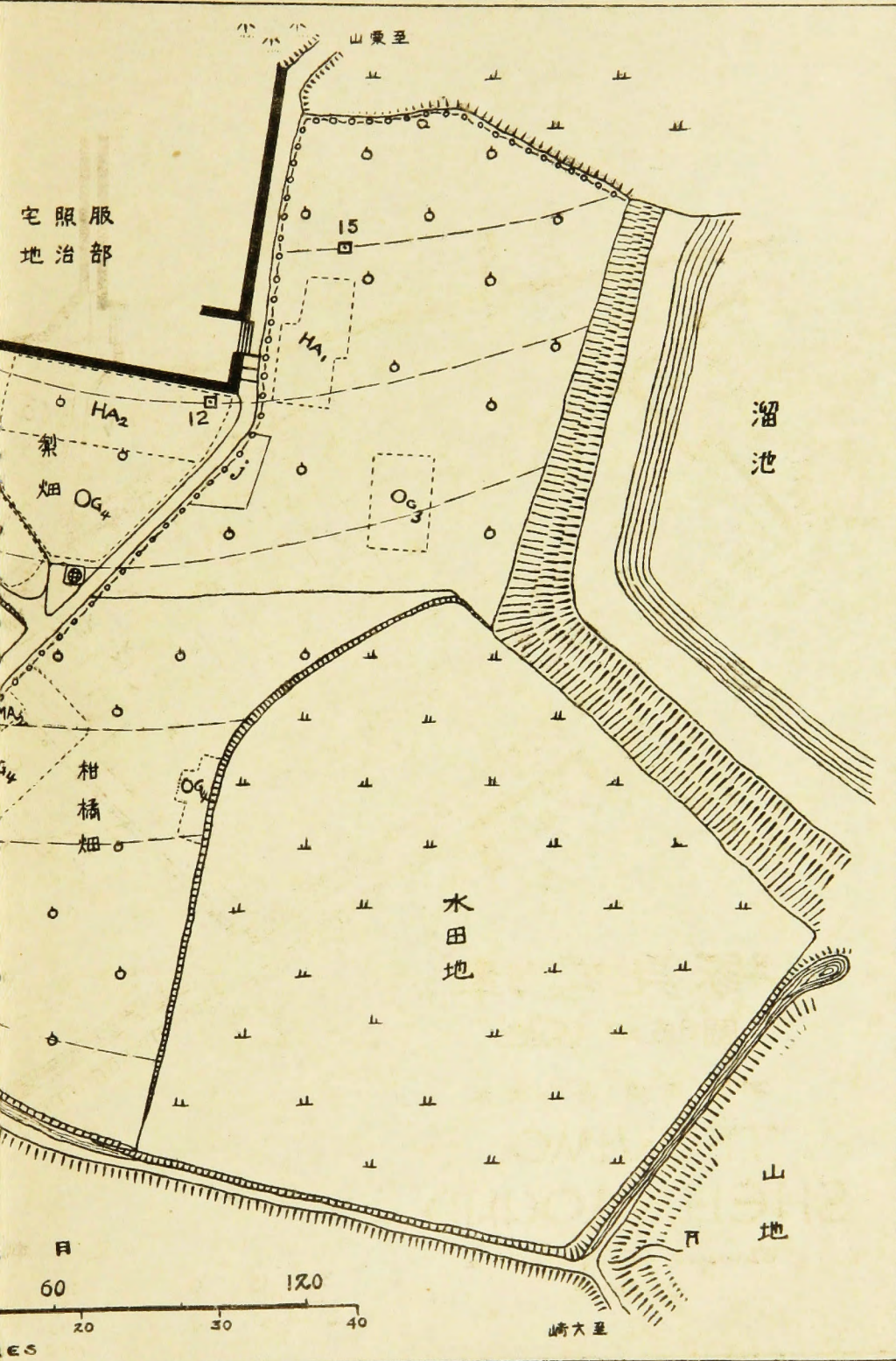


津雲貝塚全景



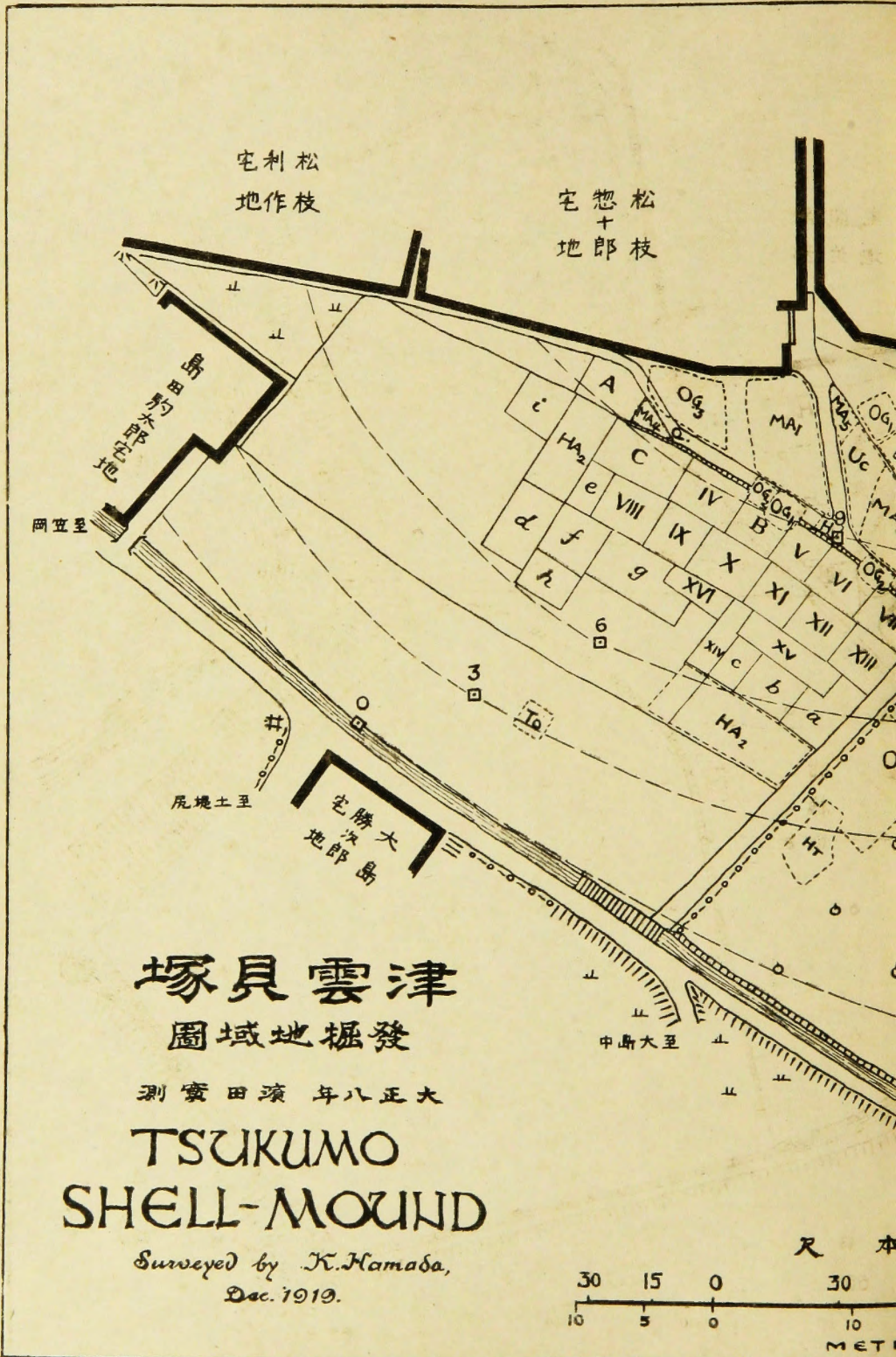
津雲貝塚發掘地







圖版第二 津雲貝塚

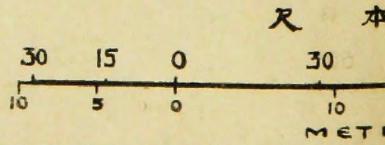


津雲貝塚  
發掘地城圖

大正八年濱田實測

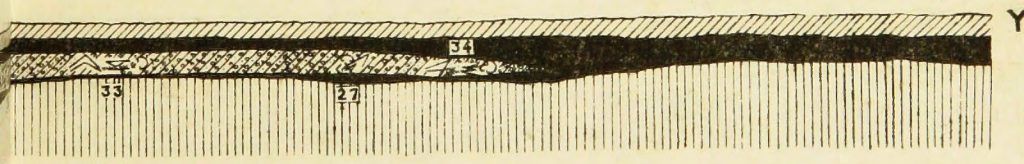
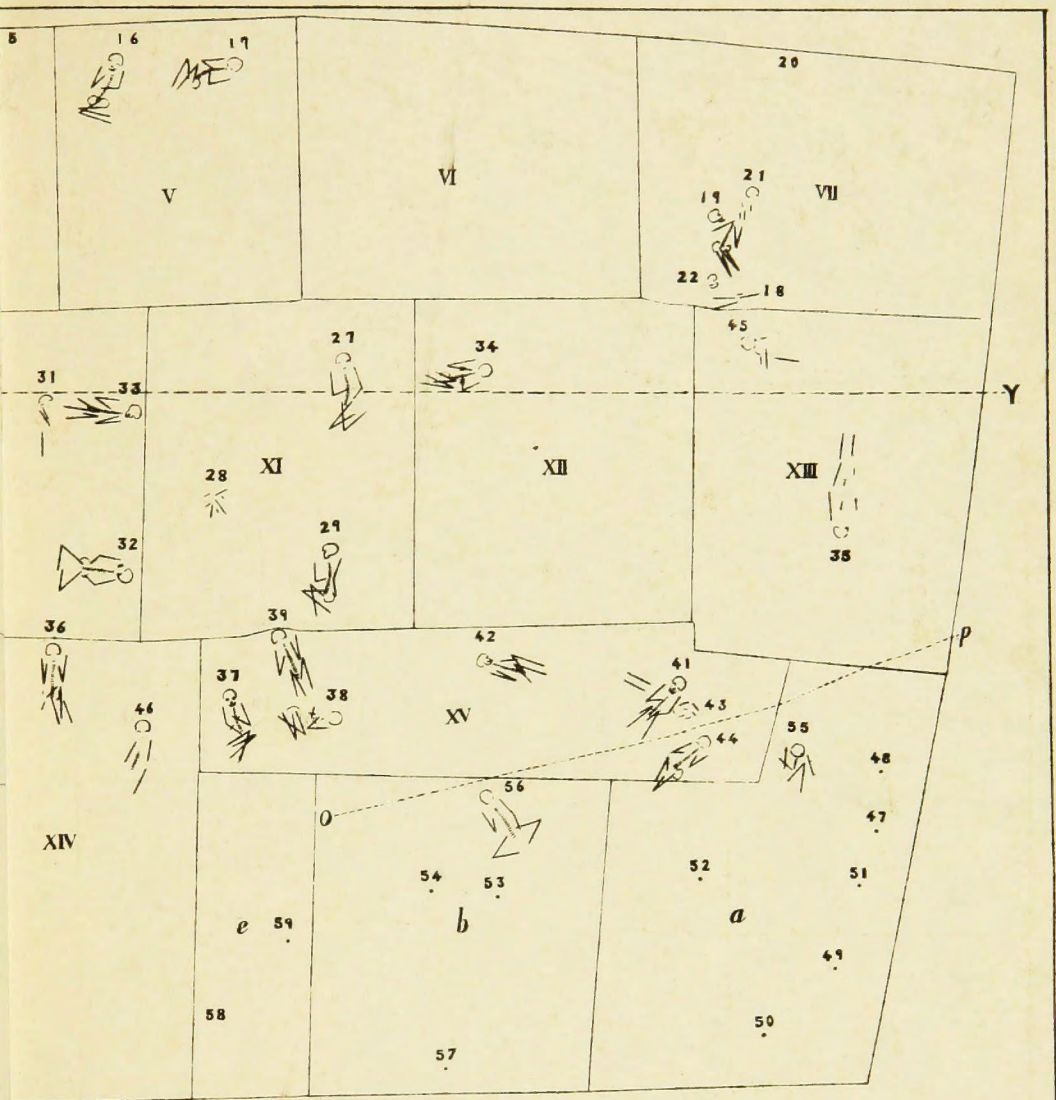
TSUKUMO  
SHELL-MOUND

Surveyed by K. Hamada,  
Dec. 1919.





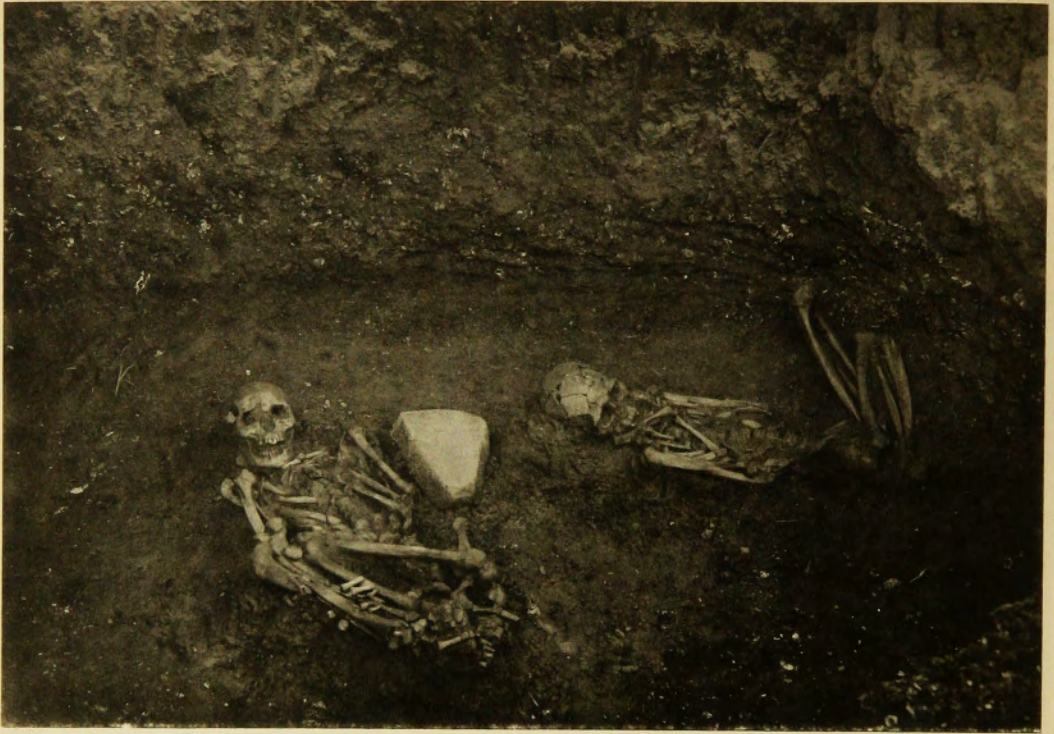
津雲貝塚發見人骨分布圖





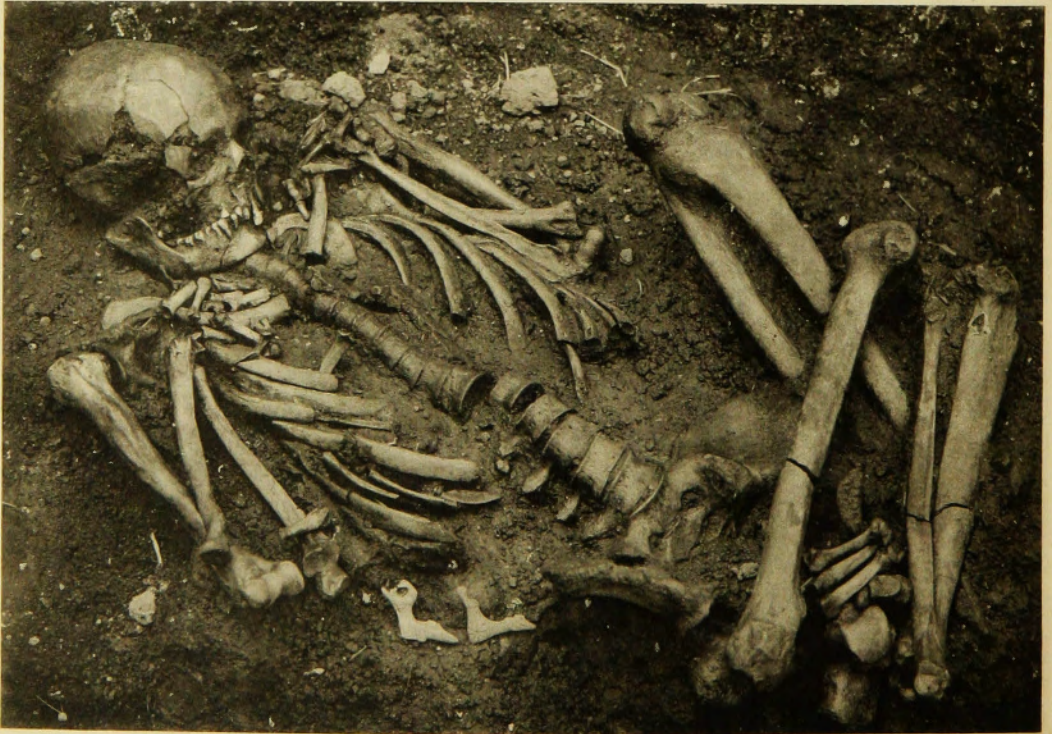






骨人 號二第號一第

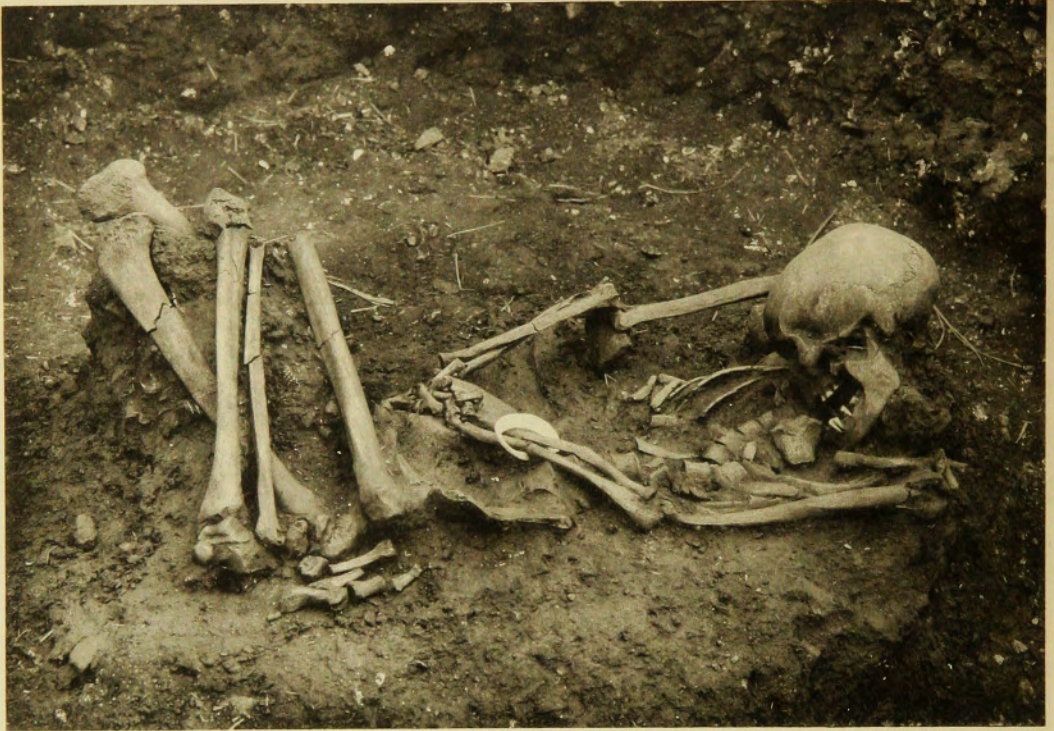
Nos. 1 & 2



骨人 號三第

No. 3





骨人 號四第

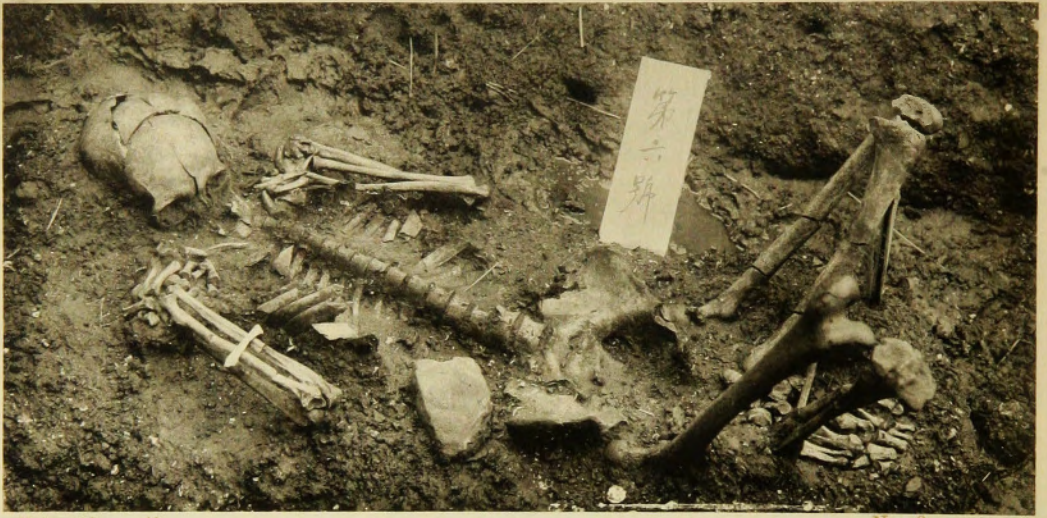
No. 4



骨人 號五第

No. 5

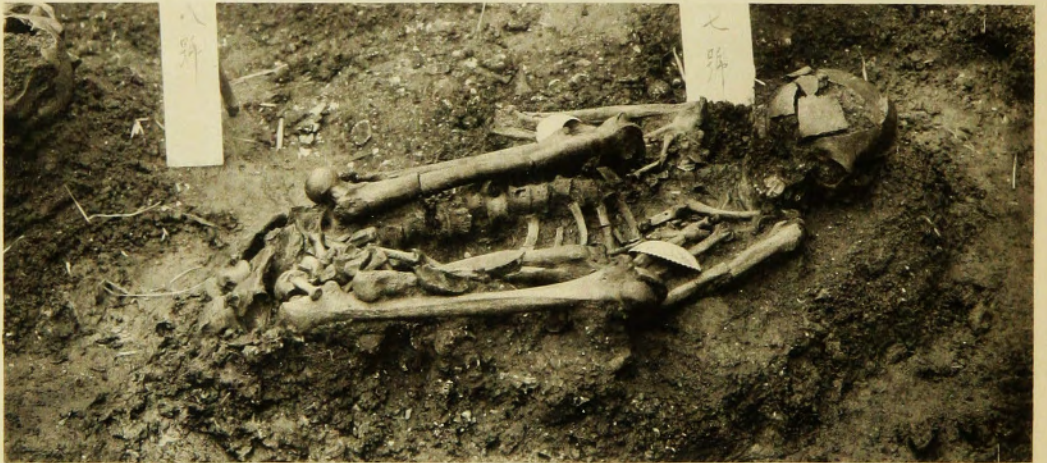




骨人 號六第

No. 6

1



骨人 號七第

No. 7

2

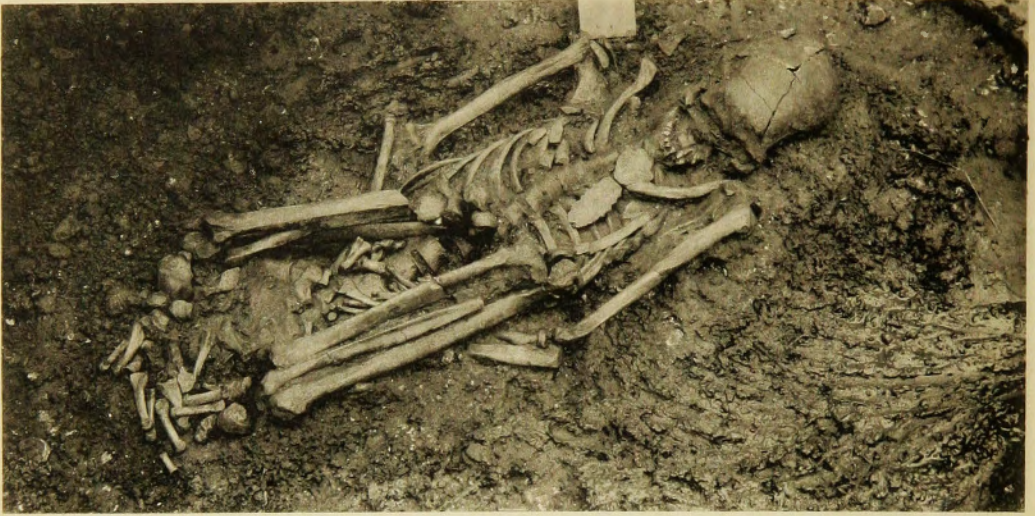


骨人 號八第

No. 8

3

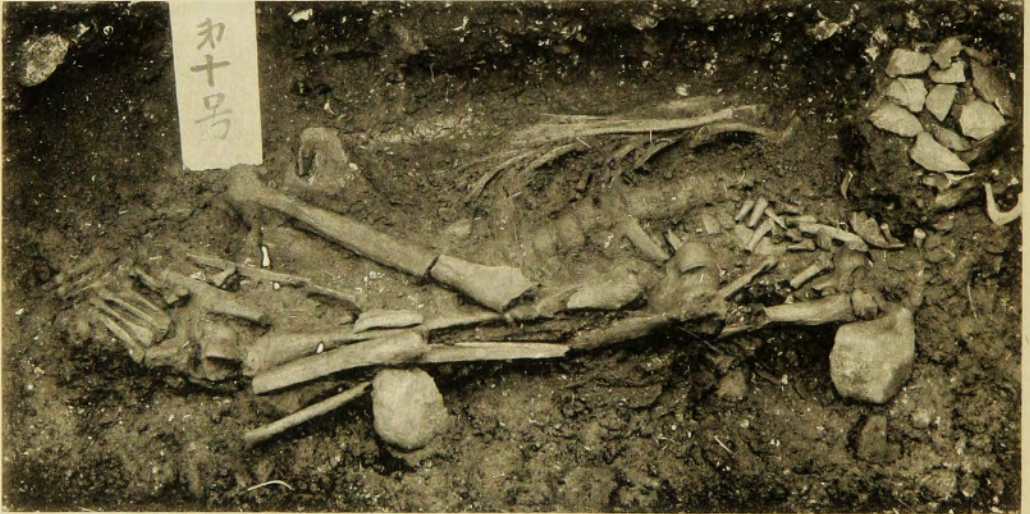




骨人 號九第

No. 9

1



骨人 號十第

No. 10

2



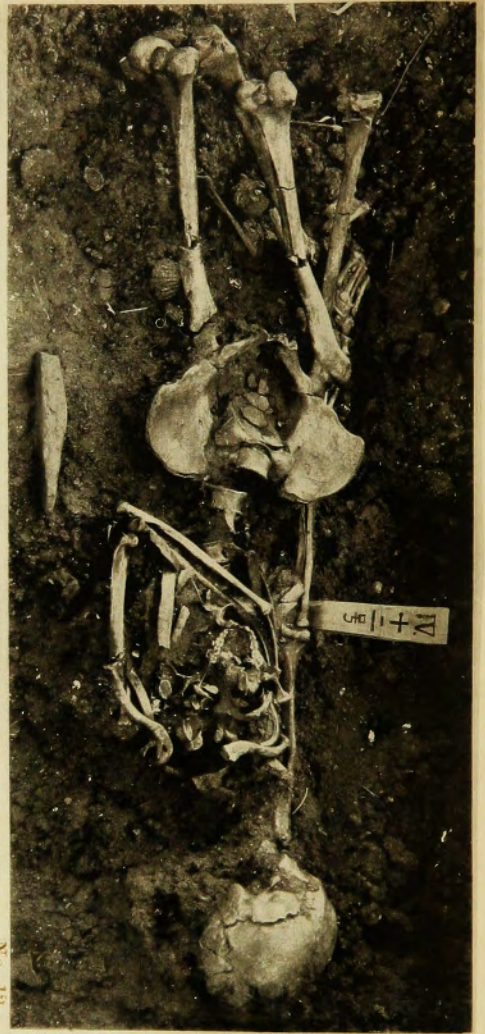
骨人 號一十第

No. 11

3

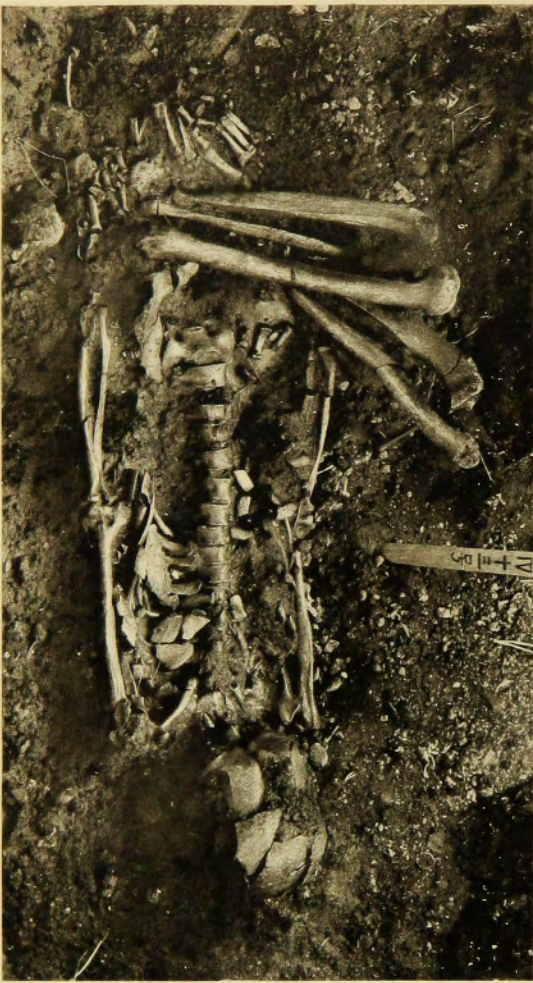


圖版第八 津雲貝塚



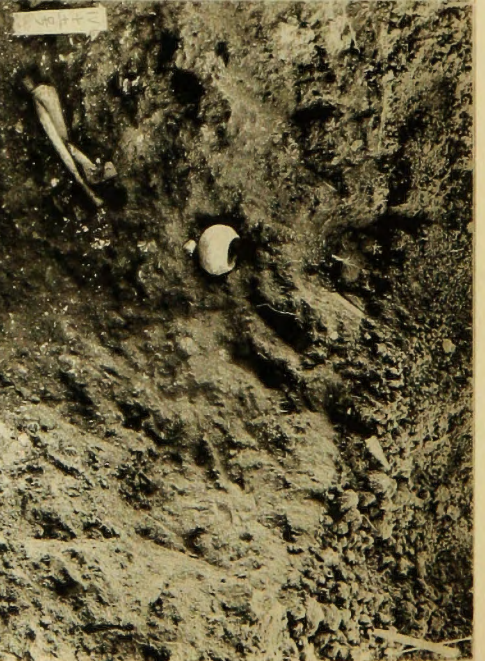
No. 12

第十二號 人骨



No. 13

第十三號 人骨



No. 14 & 15

第十四號, 第十五號 人骨



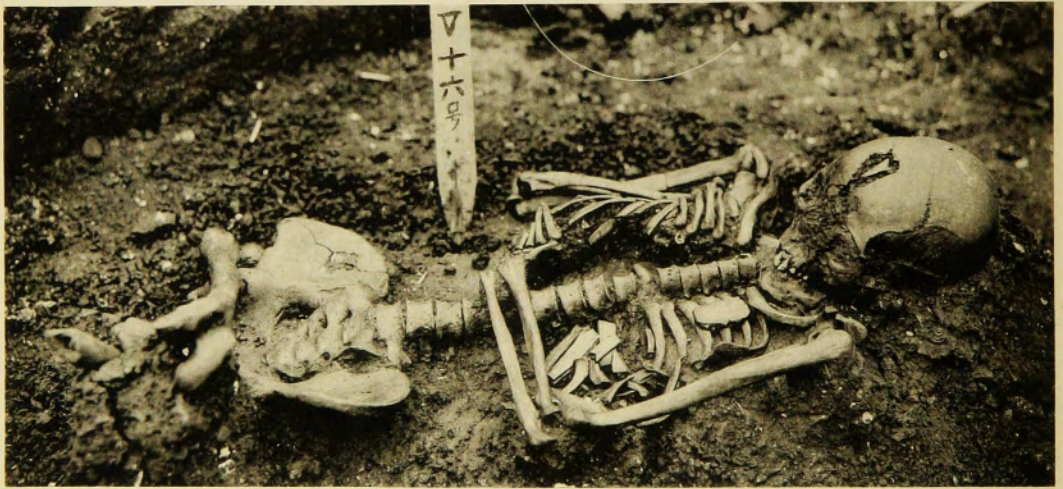




骨人 號二十廿第號九十第號一廿第

Nos. 22, 19 & 21

1



骨人 號六十第

No. 16

2

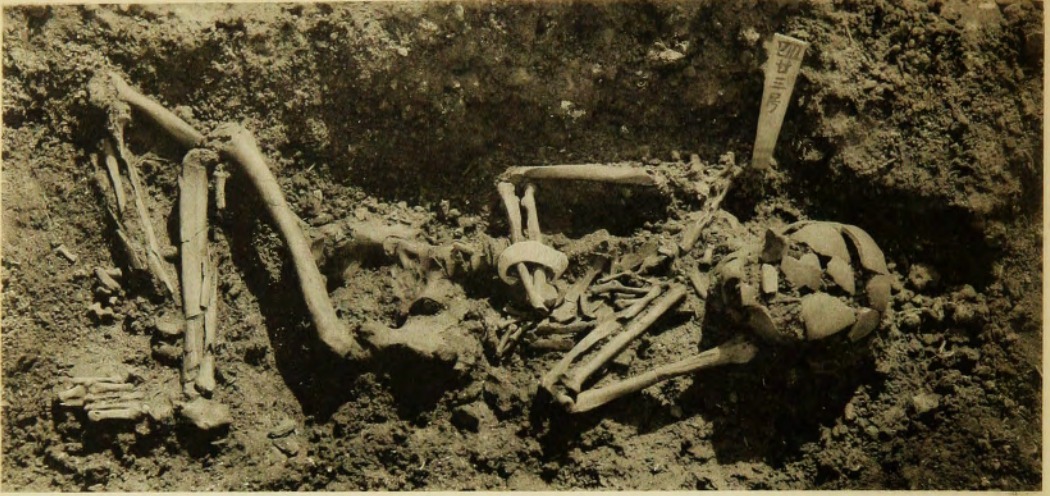


骨人 號七十第

No. 17

2

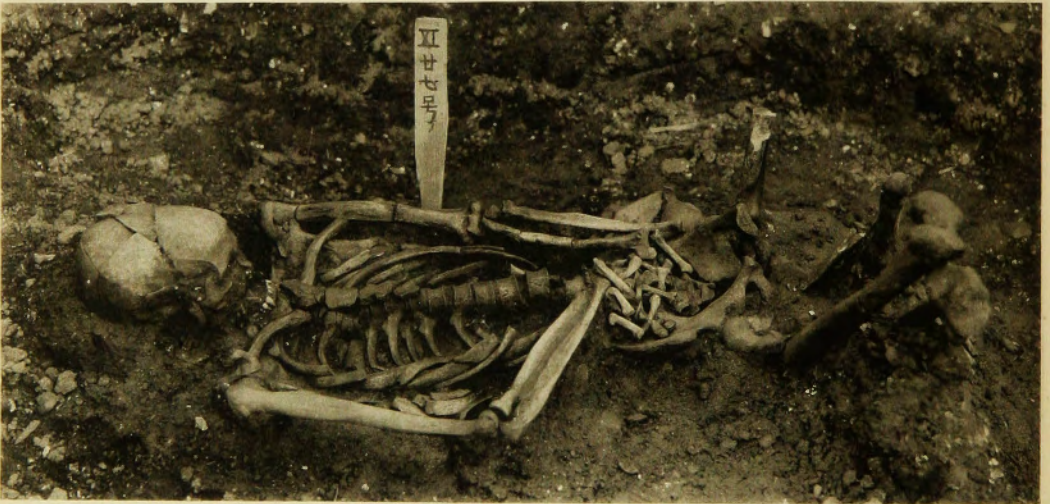




骨人 號三廿第

No. 23

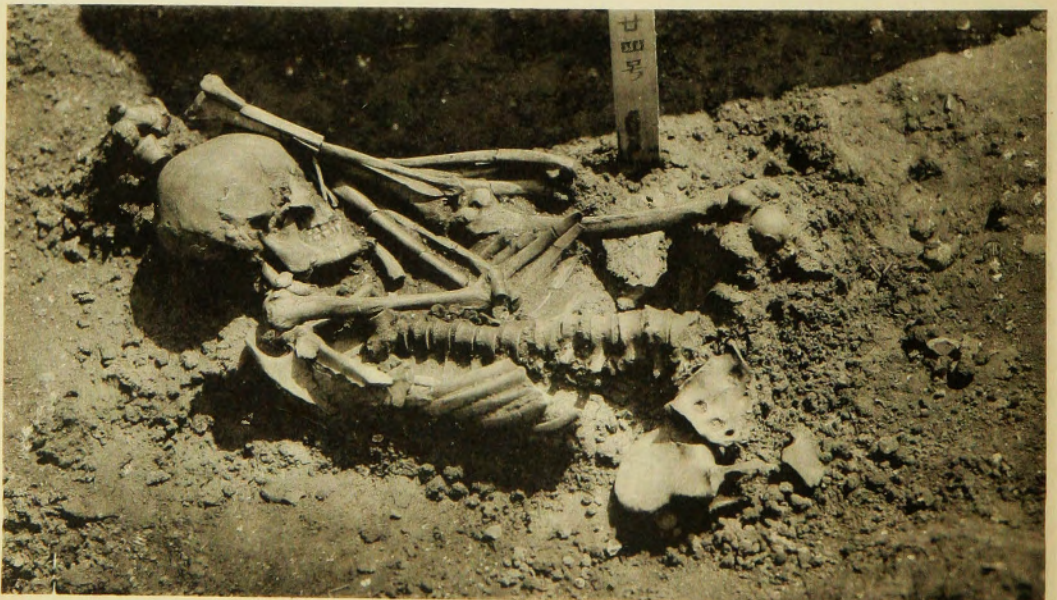
1



骨人 號七廿第

No. 27

2



骨人 號四廿第

No. 24

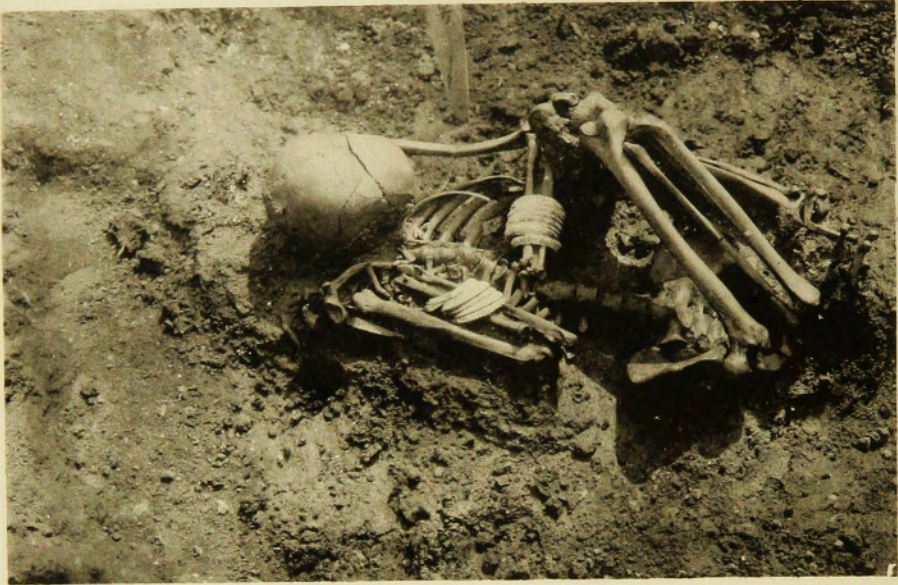
3



XI, Tsukumo Shell-mound.

圖  
版  
第  
一  
一

津  
雲  
貝  
塚



骨人 號四廿第

No. 34

1



骨人 號六廿第號五廿第

Nos. 25 & 26

2





No. 25

第廿八號 人骨

1



No. 20

第二十號 人骨

2



No. 29

第廿九號 人骨

3

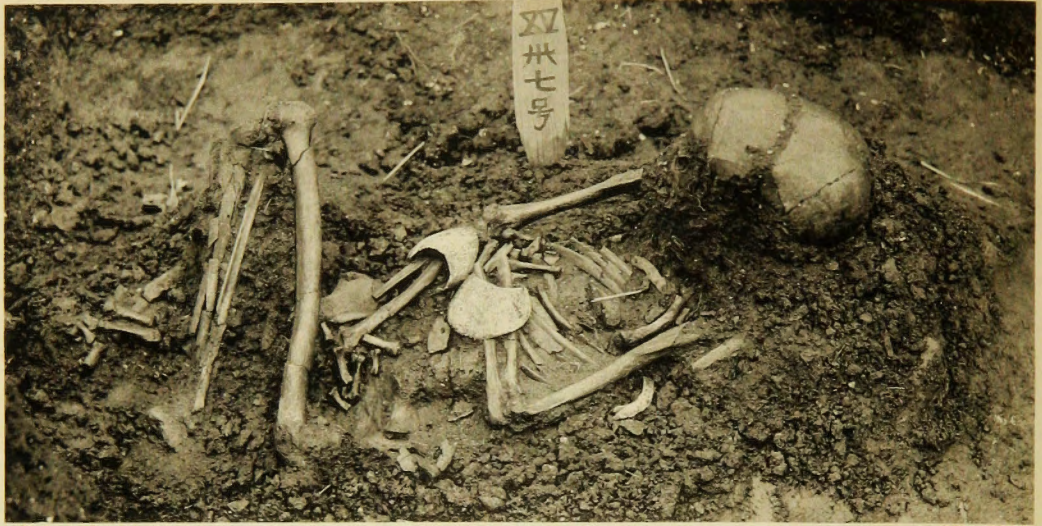


No. 30

第三十號 人骨

4





1

骨人 號七卅第

No. 87



2

骨人 號二卅第

No. 32



3

骨人 號一卅第號三卅第

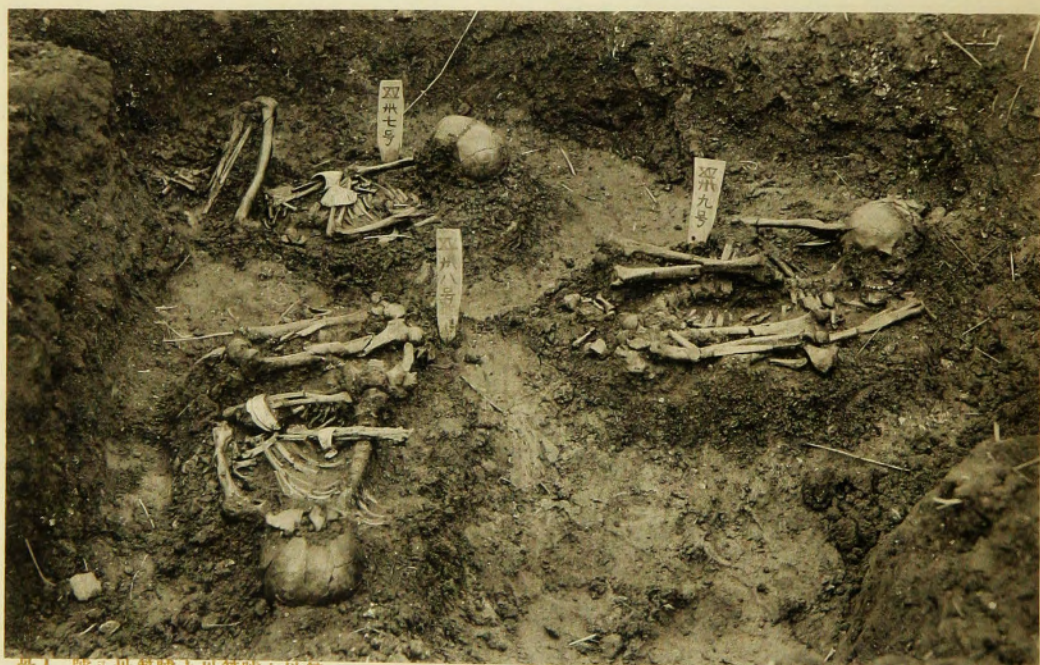
Nos. 33 & 31





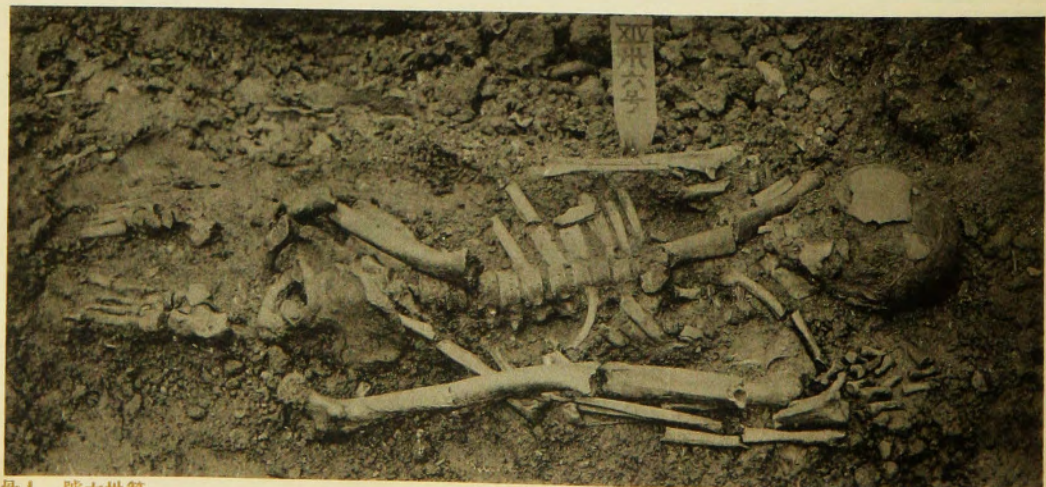
骨人 號五卅第

No. 35



骨人 號八卅第號九卅第號七卅第

Nos. 37, 39 & 38

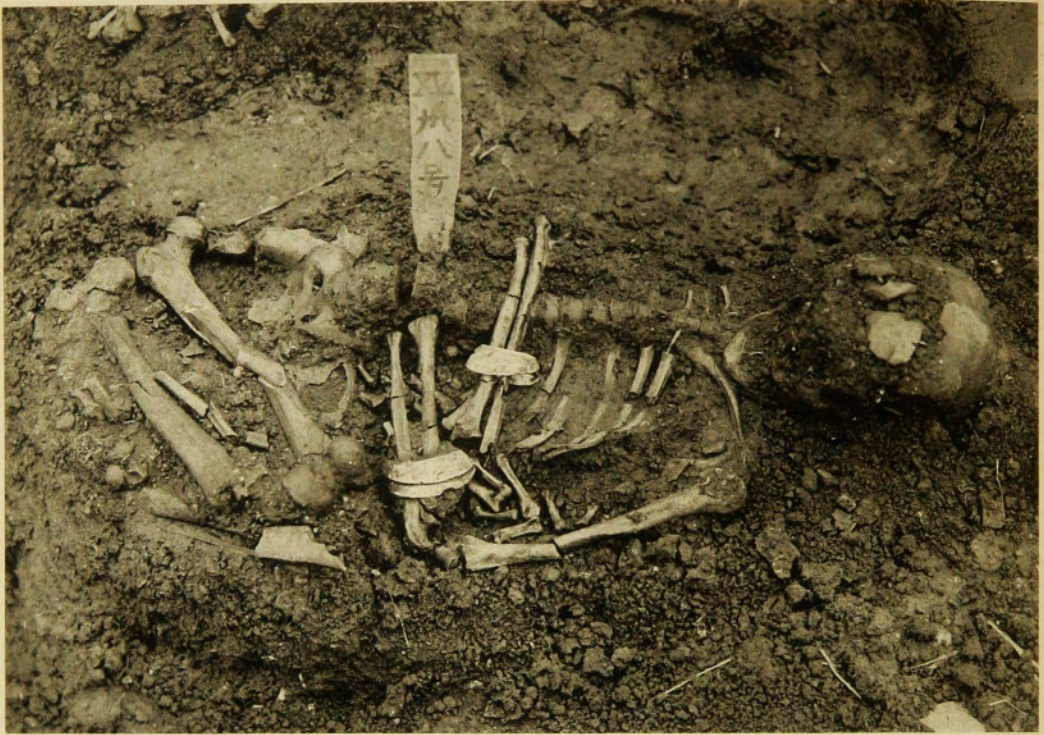


骨人 號六卅第

No. 36

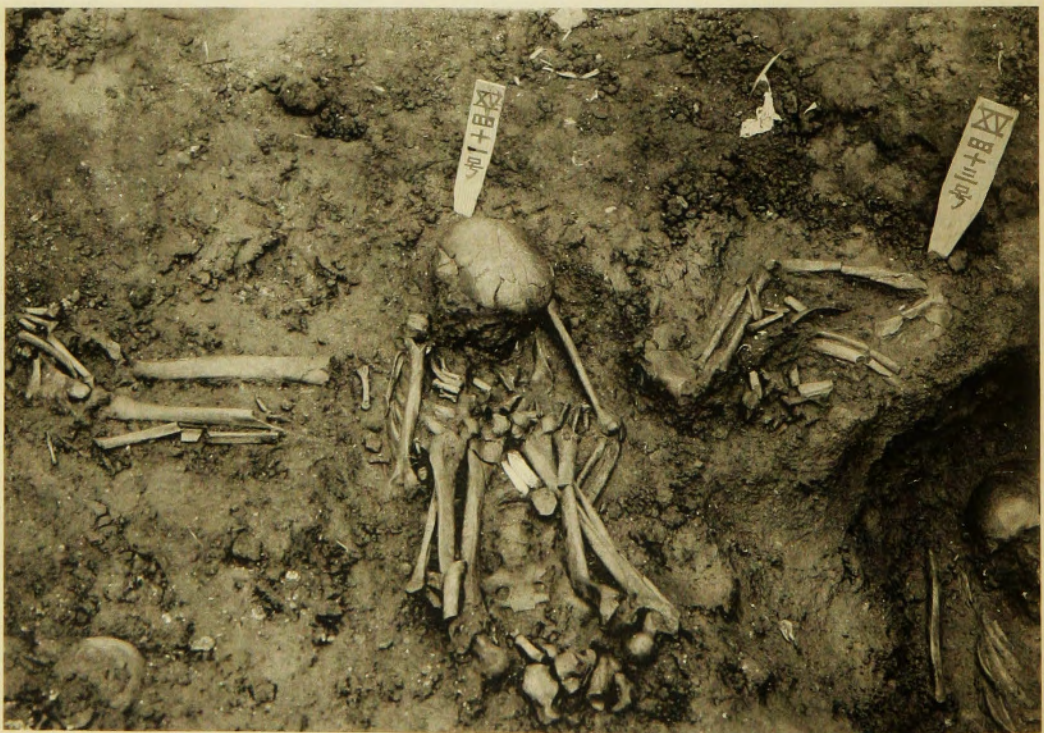
1  
2  
3





骨人 號八卅第

No. 38



骨人 號一十四第號三十四第

Nos. 43 & 41





骨人 號十四第

No. 40



骨人 號二十四第

No. 42



骨人 號四十四第

No. 44

1

2

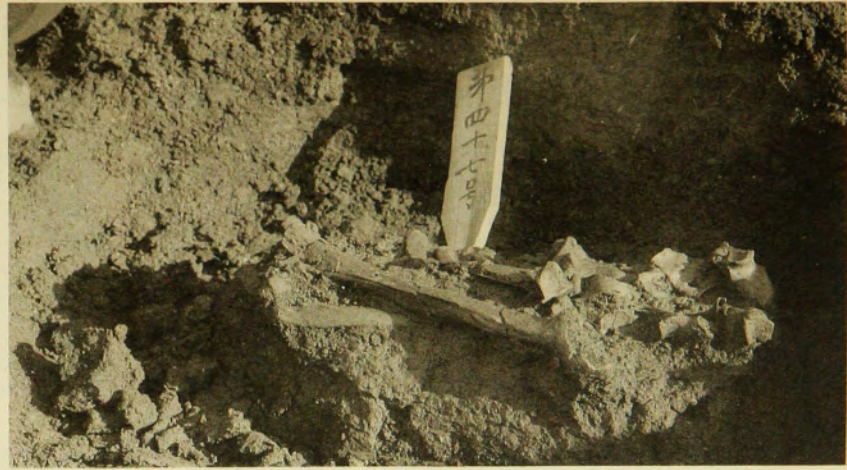
3





第四十九號 人骨

No. 49



第四十七號 人骨

No. 47



第五十一號 人骨

No. 51



第五十二號 人骨

No. 52

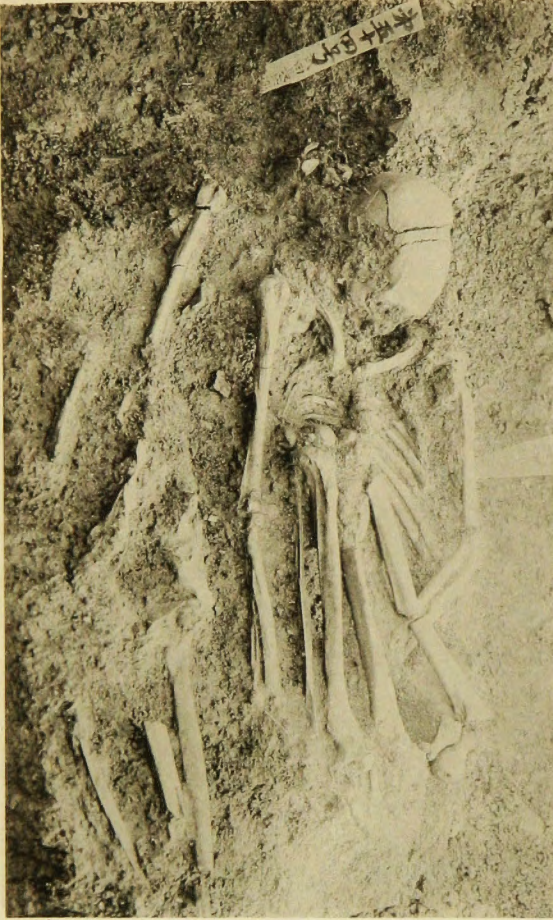




第五十號 人骨

1

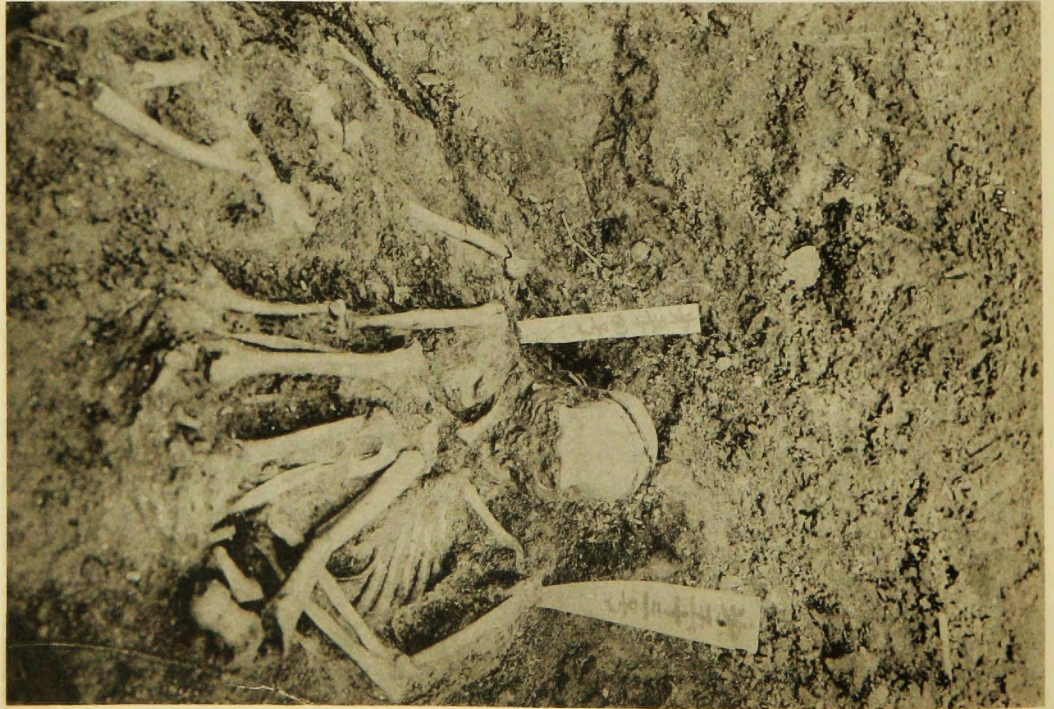
No. 50



第五十三號第五十四號 人骨

2

Nos. 53 & 54



第五十三號第五十四號 人骨

3

Nos. 53 & 54





No. 56

第五十六號 人骨



No. 59

第五十九號 人骨



No. 55

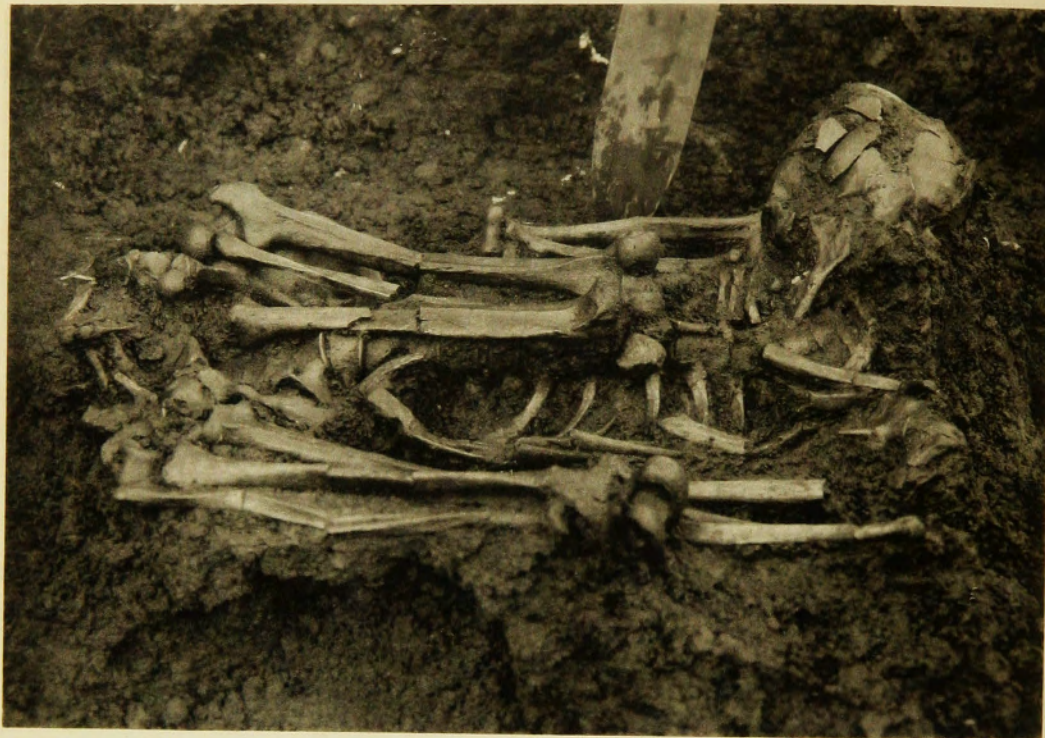
第五十五號 人骨

1

2

3

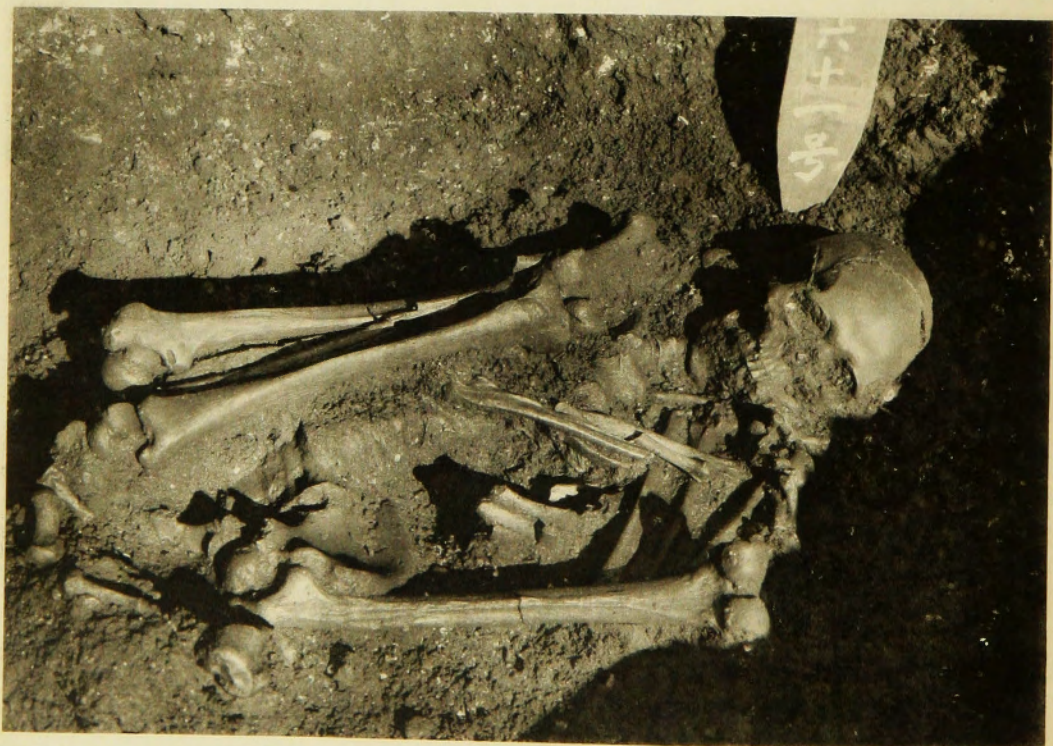




骨人 號十六第

No. 60

1



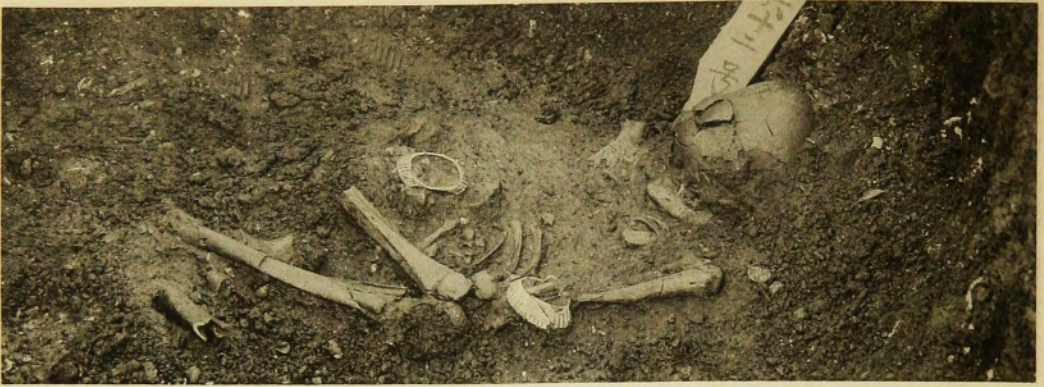
骨人 號一十六第

No. 61

2



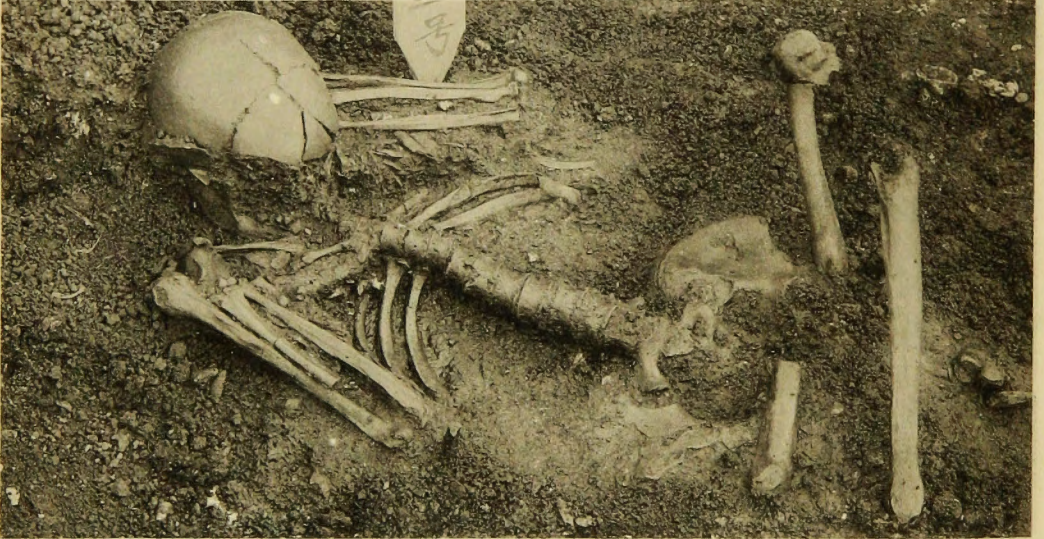
I



骨人 號二十六第

No. 62

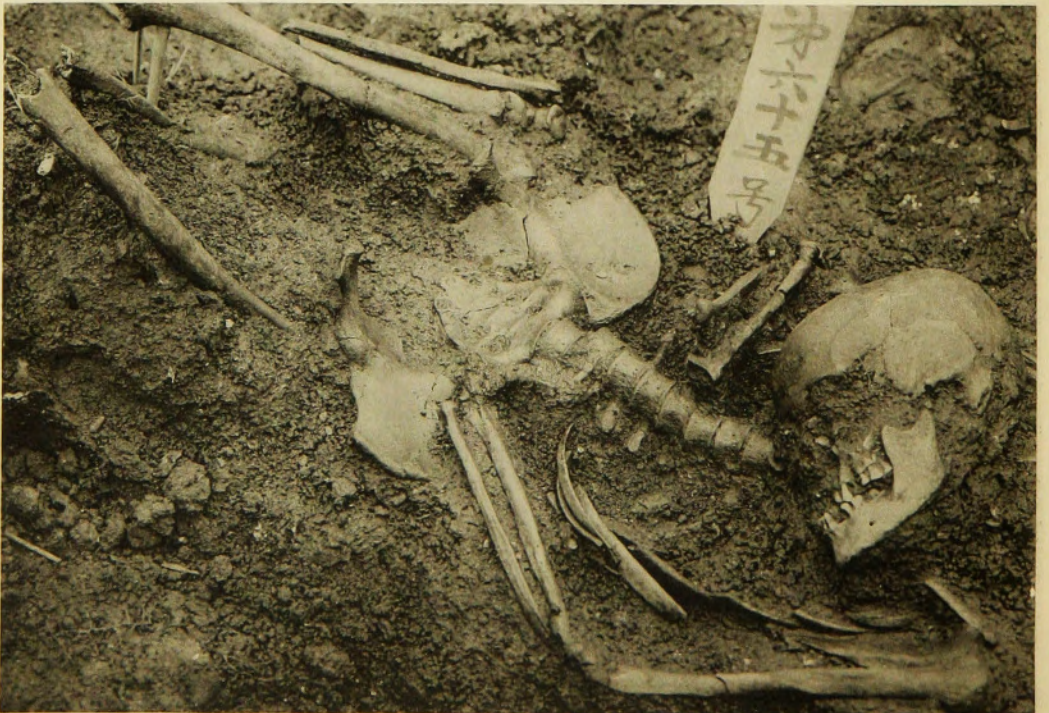
2



骨人 號三十六第

No. 63

3



骨人 號五十六第

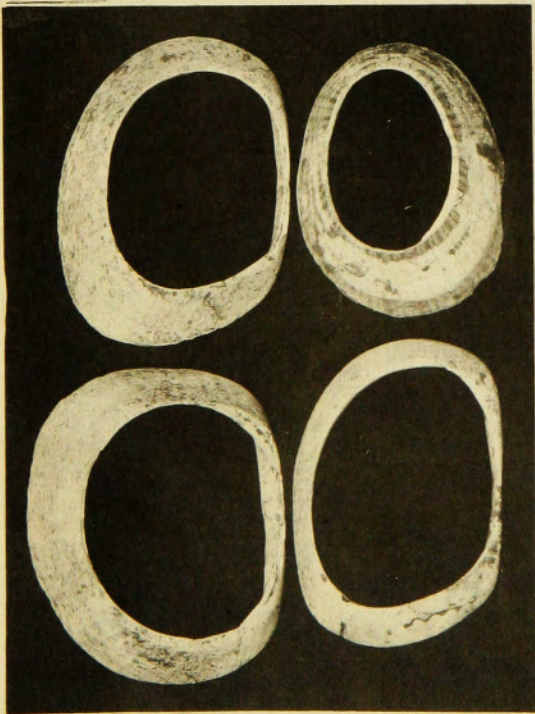
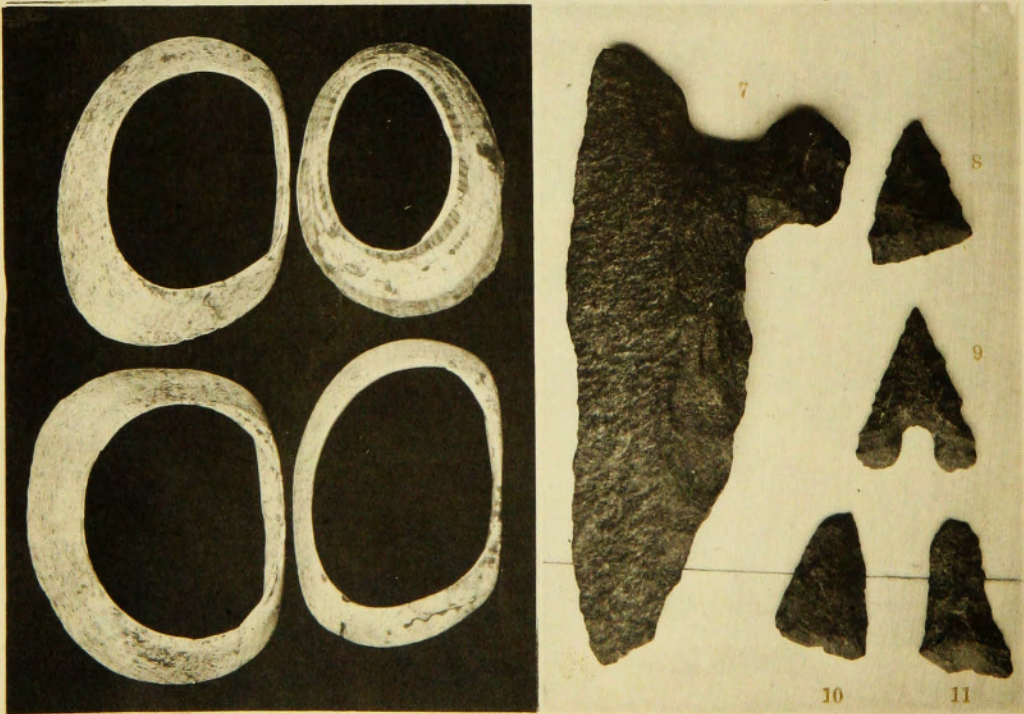
No. 65



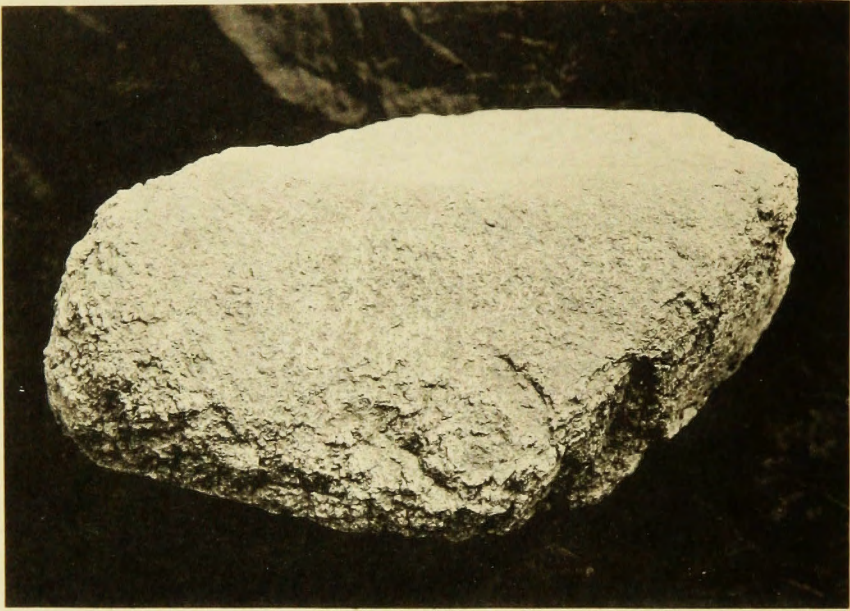
(1) 津雲貝塚發見裝飾品 11



(2) 同上石器(11)及貝輪(11)

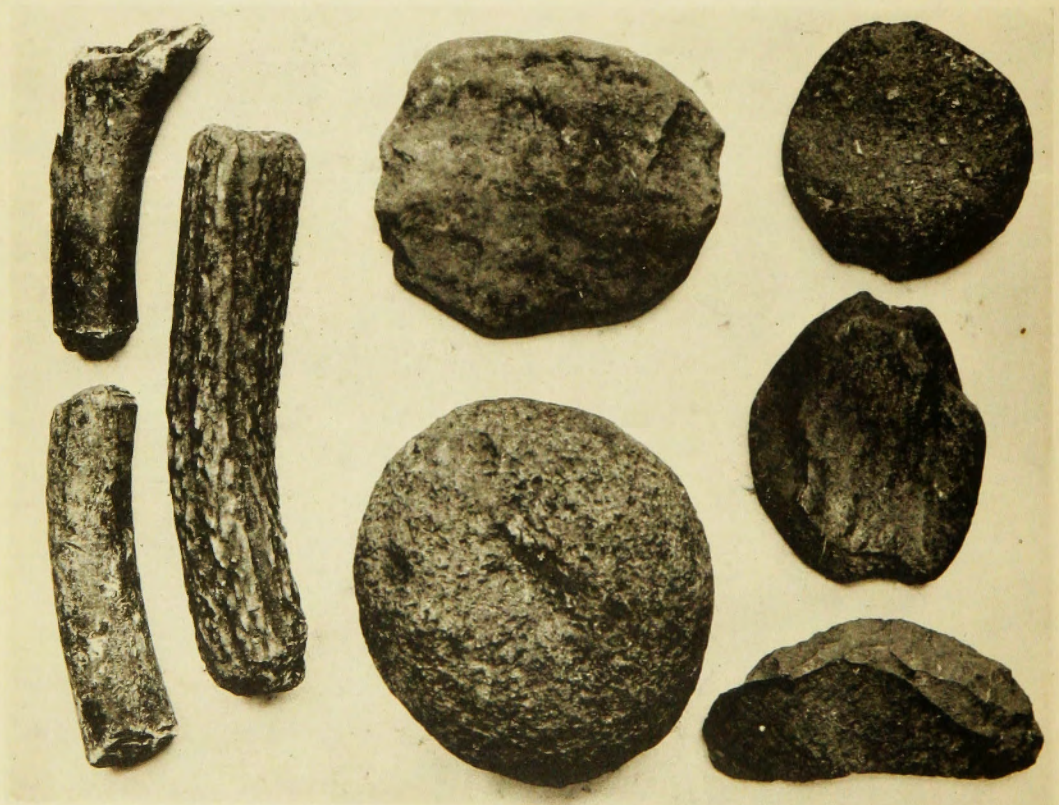






石砥見發塚貝雲津

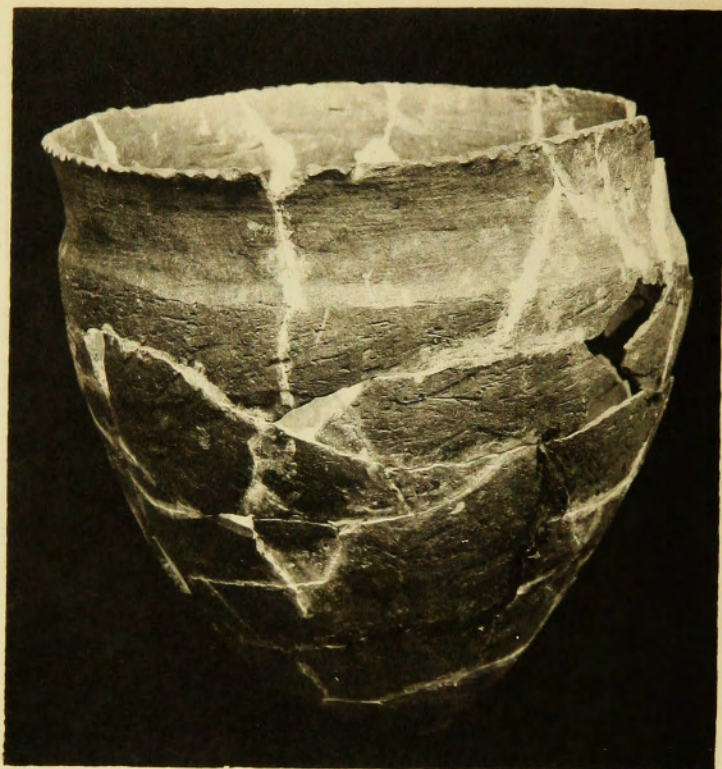
約



角鹿工加及器石上同

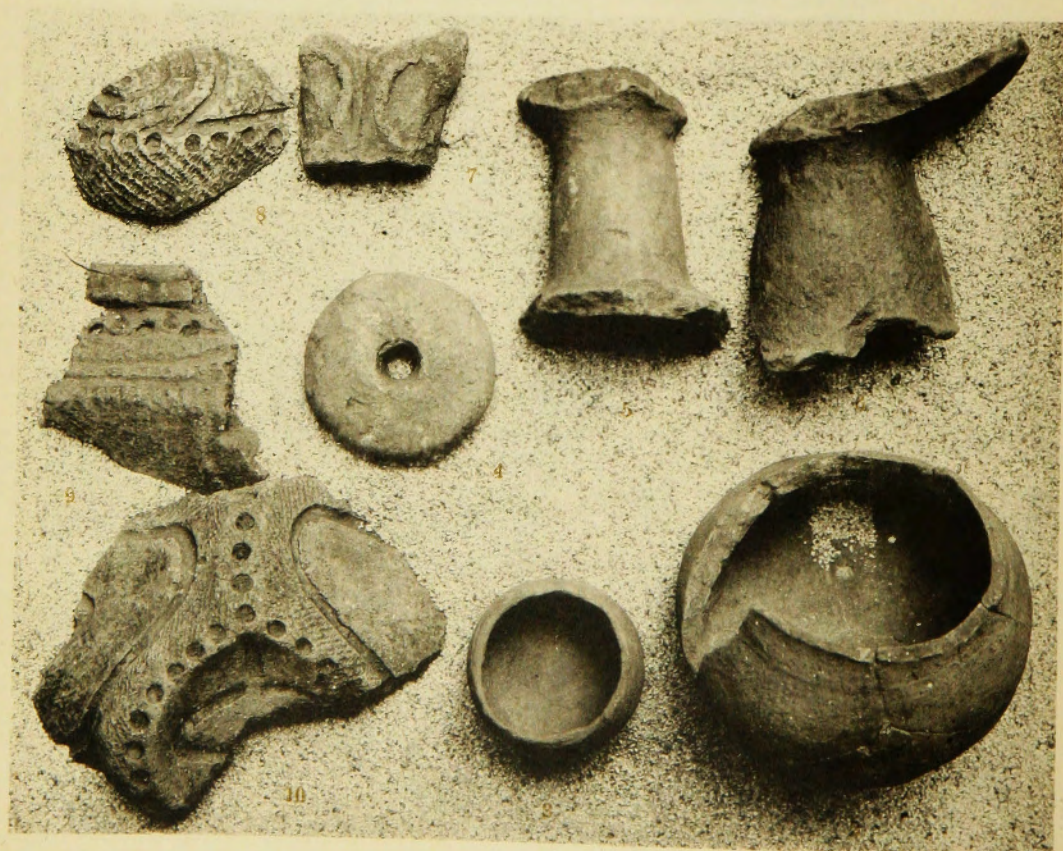
約





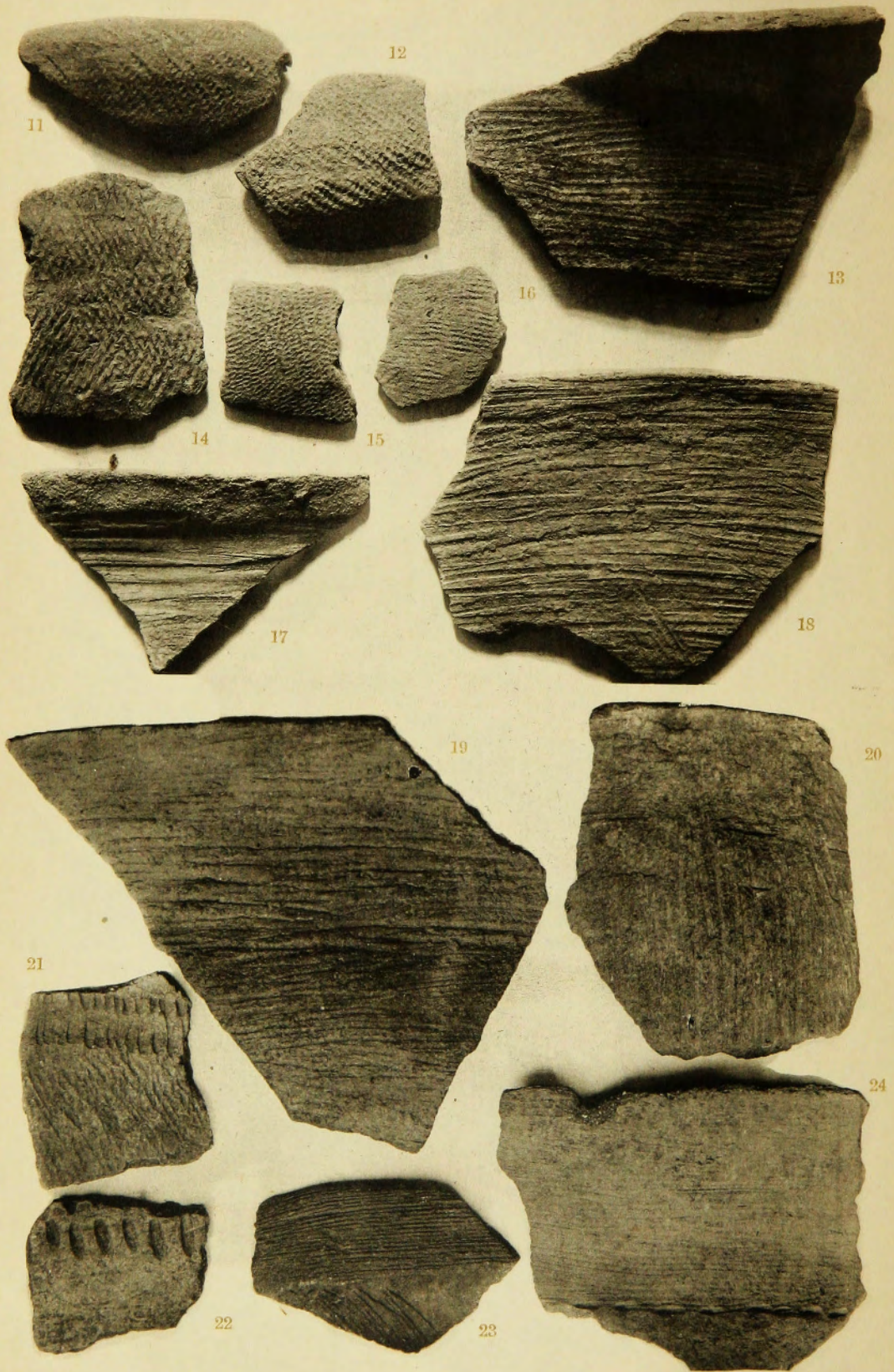
津雲貝塚發見第廿六號乳兒人骨入壺(1)

約1/6

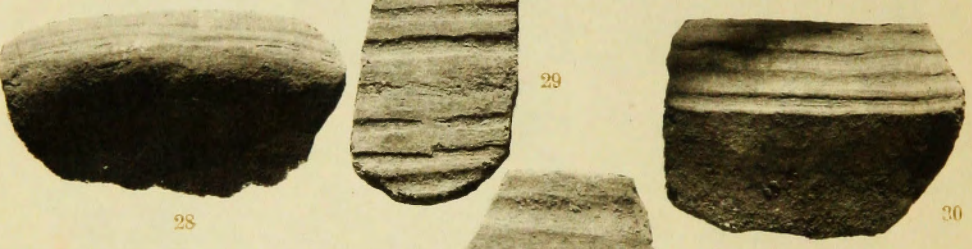
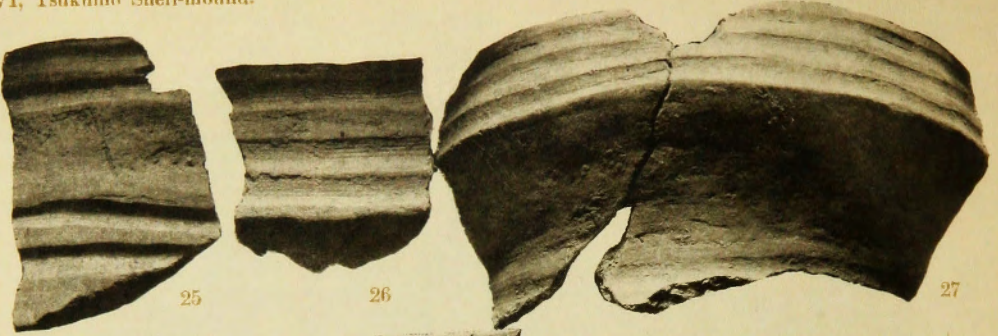


同上發見土器(彌生式及貝塚式)









片破器土見發塚貝雲津





45



46



47



48



49



50



51



52



53



54



55



56



57



58



59



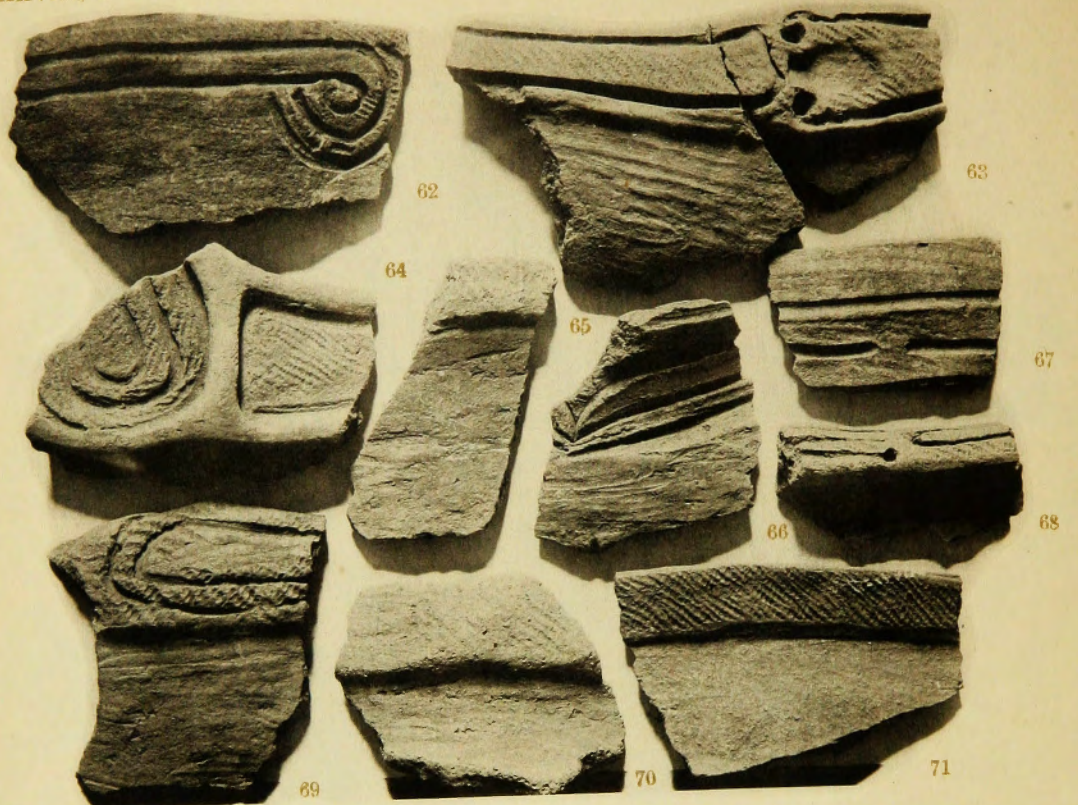
60



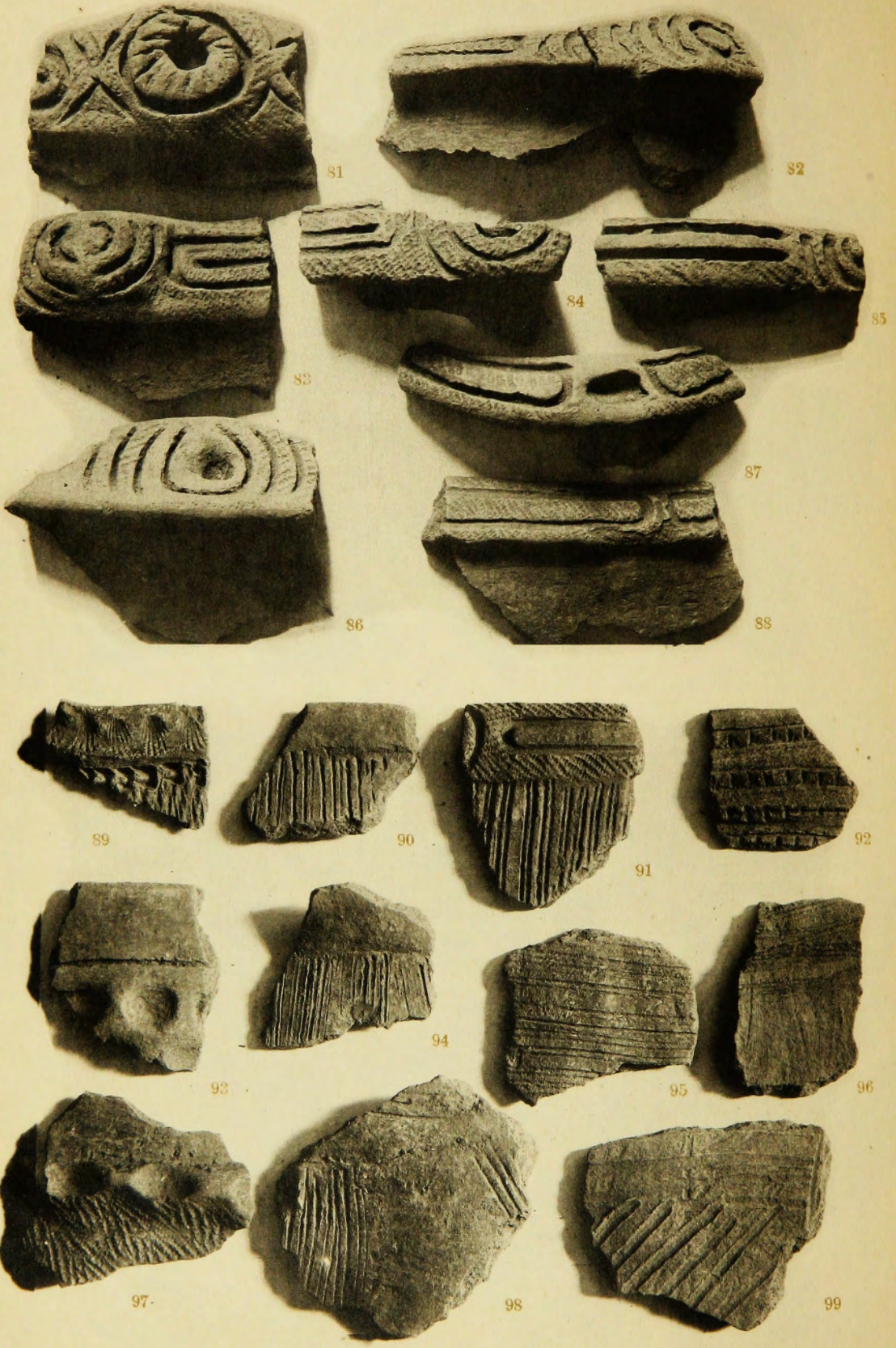
61

片破器土見發塚貝雲津



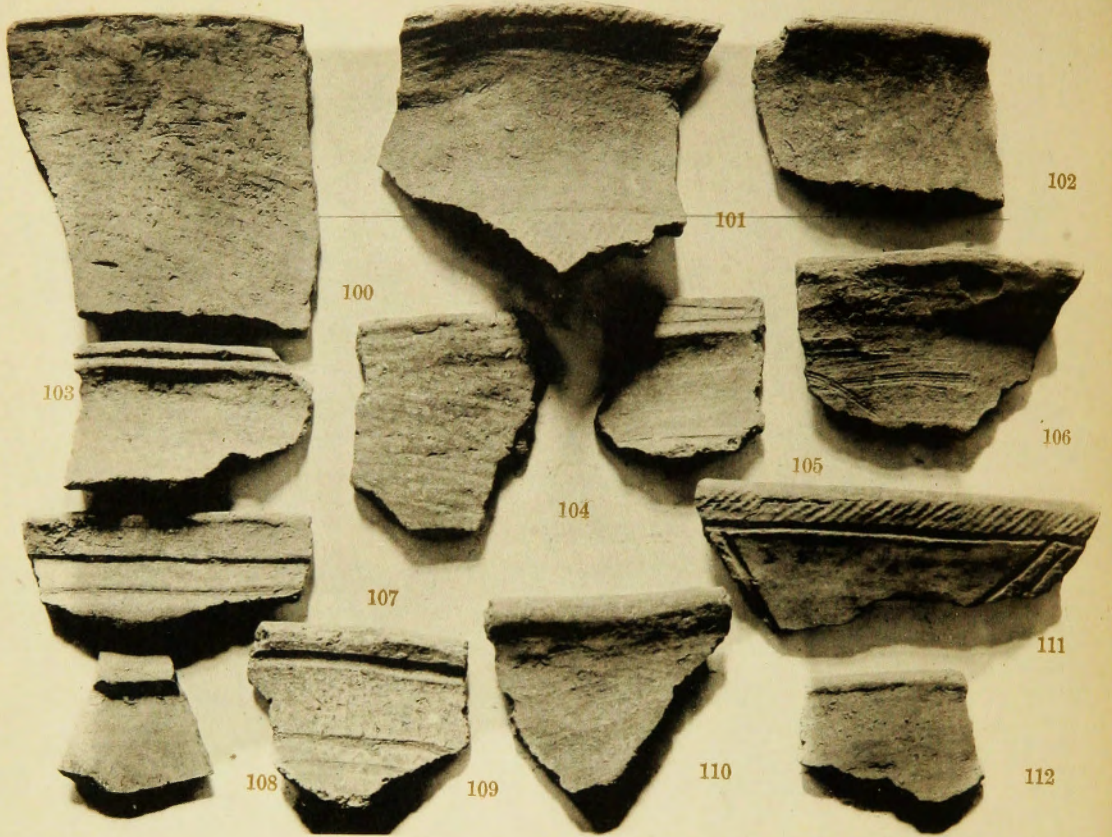




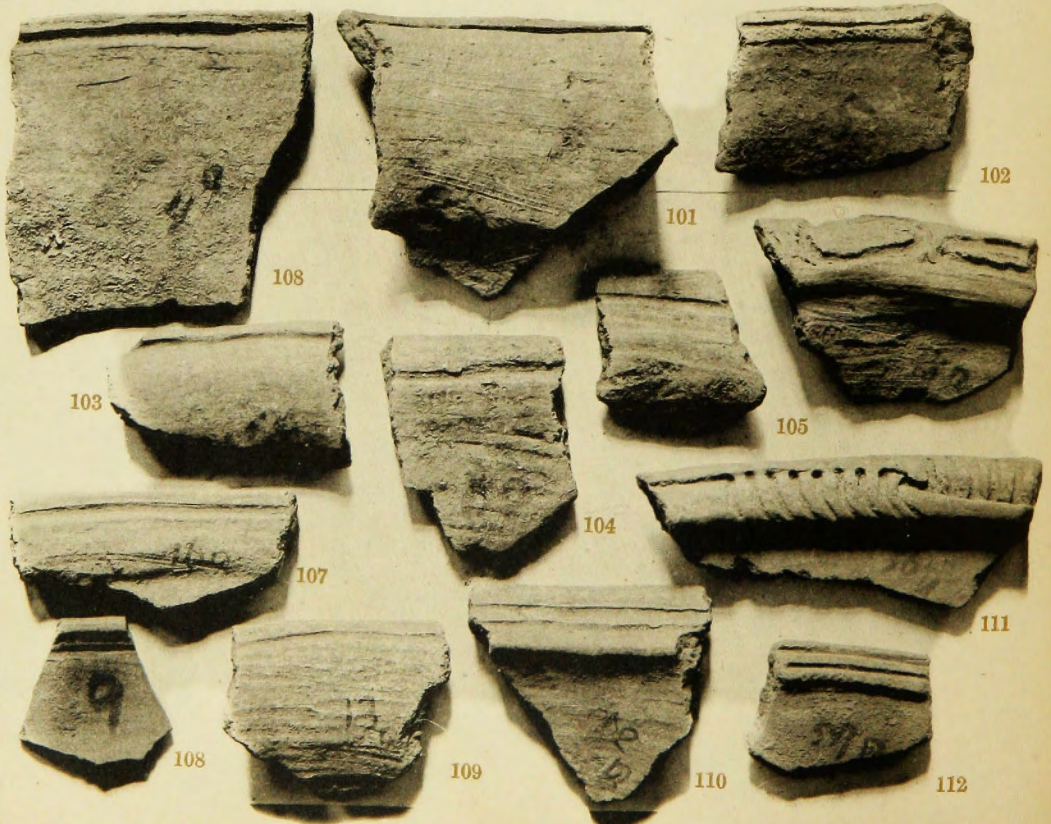




表面

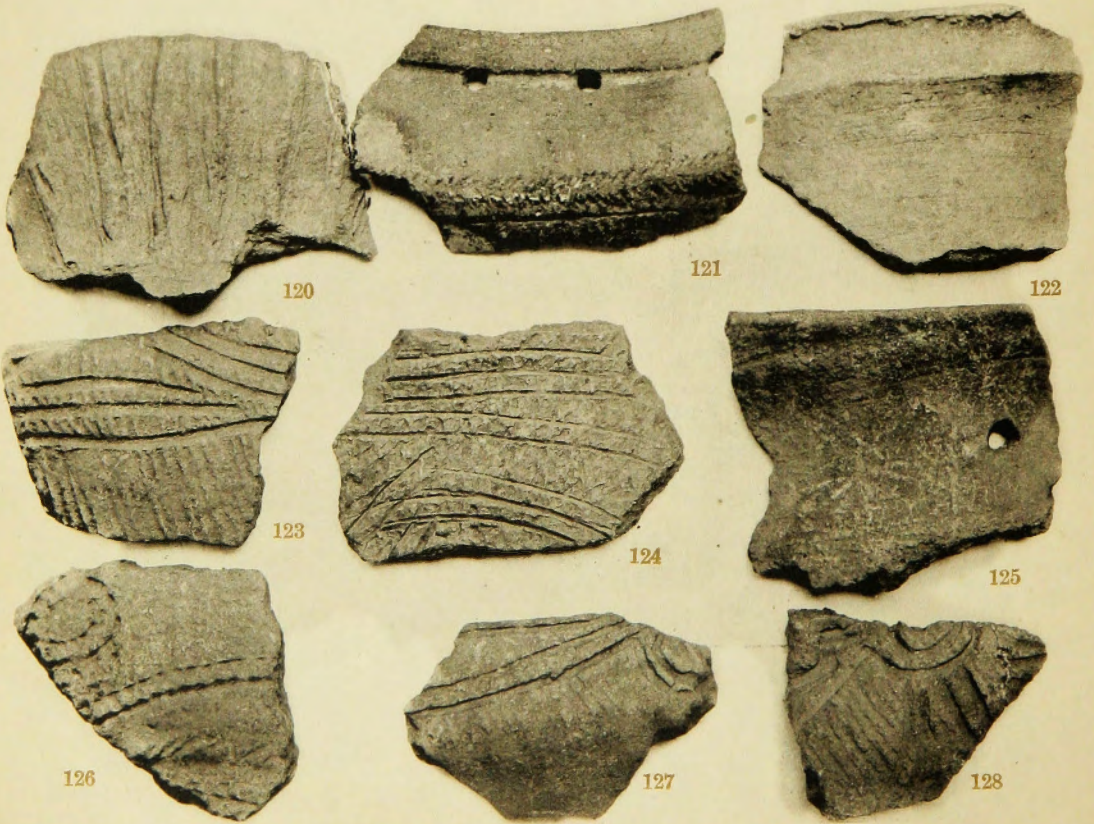
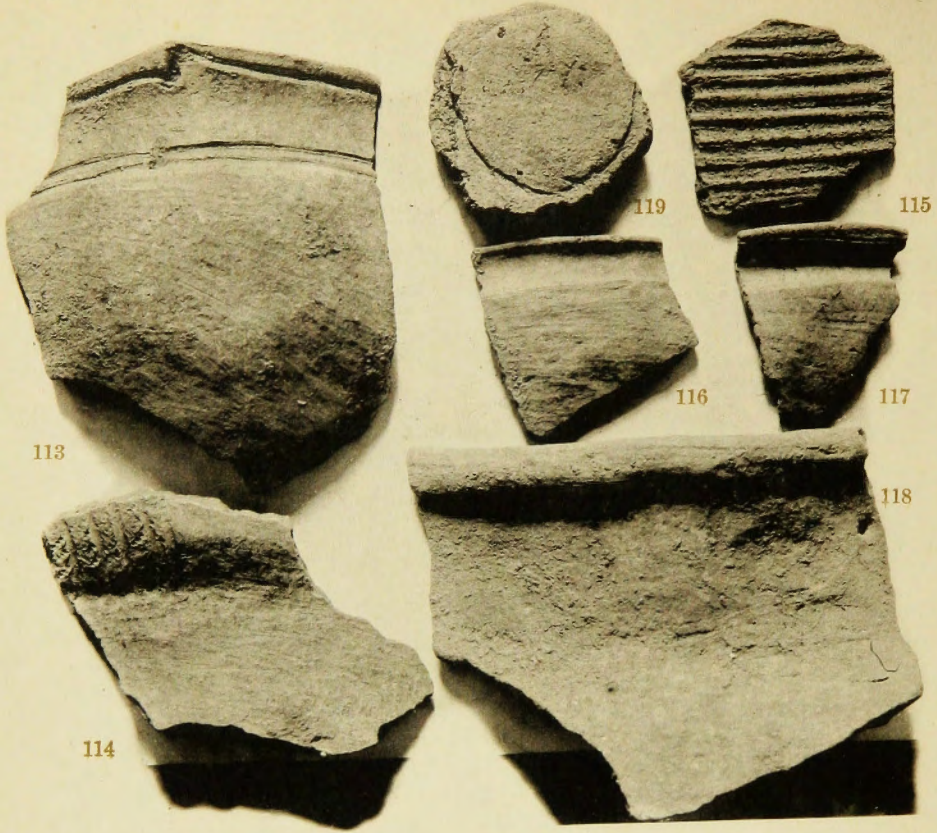


裏面

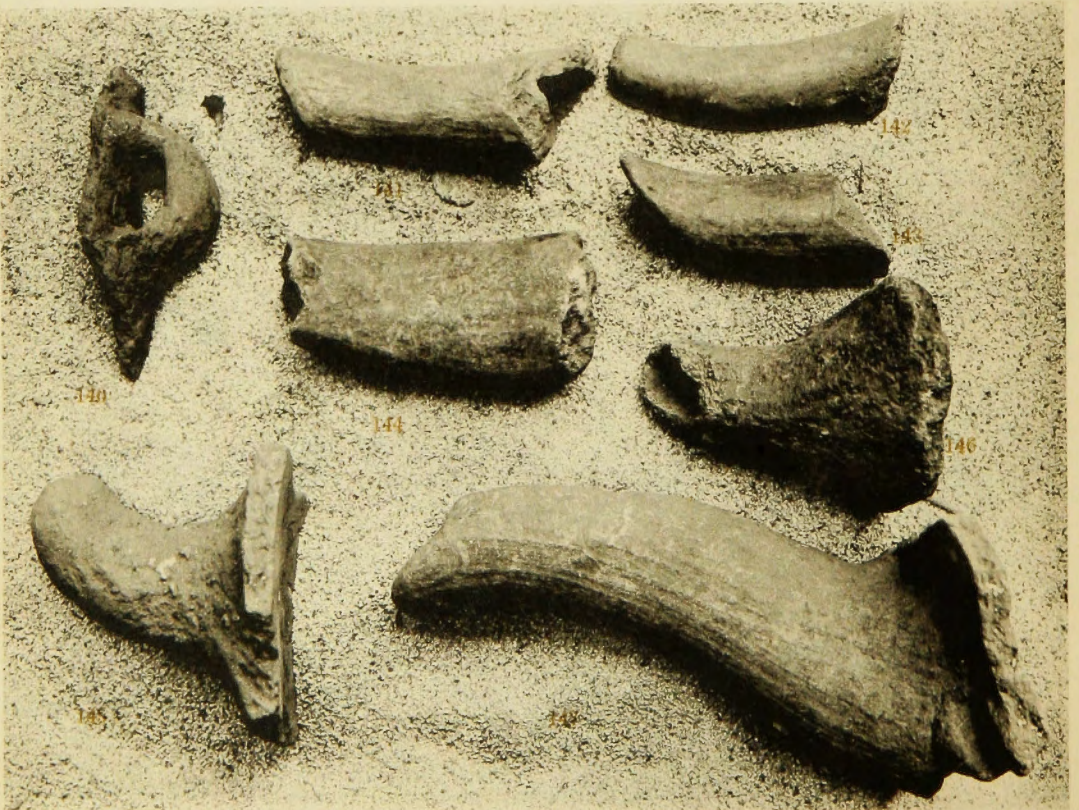




圖版第三一  
津雲貝塚

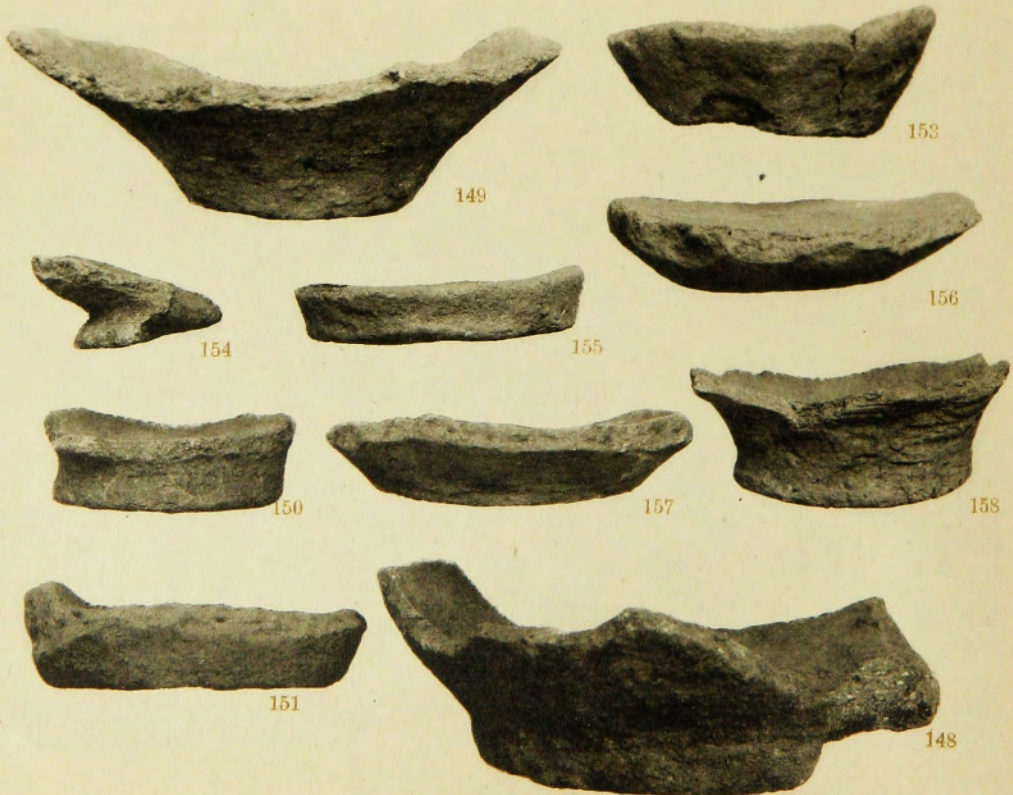
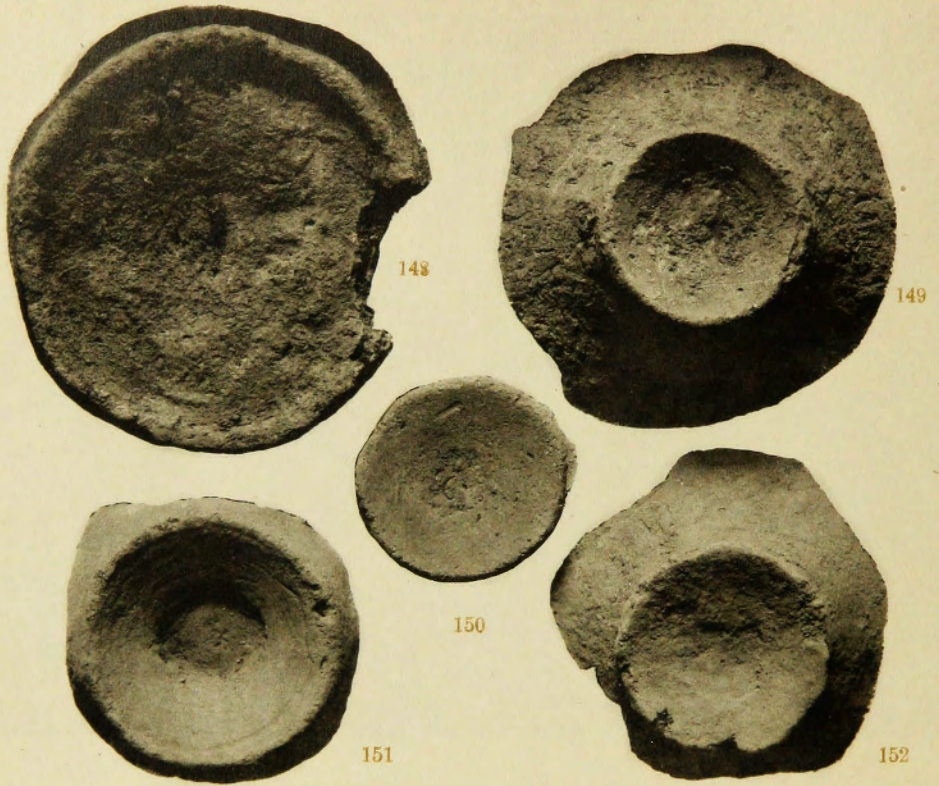






片破器土見發塚貝雲津









轟貝塚全景

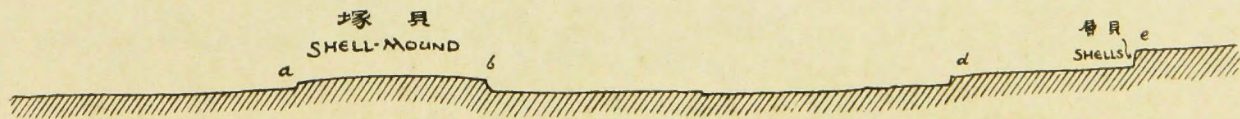
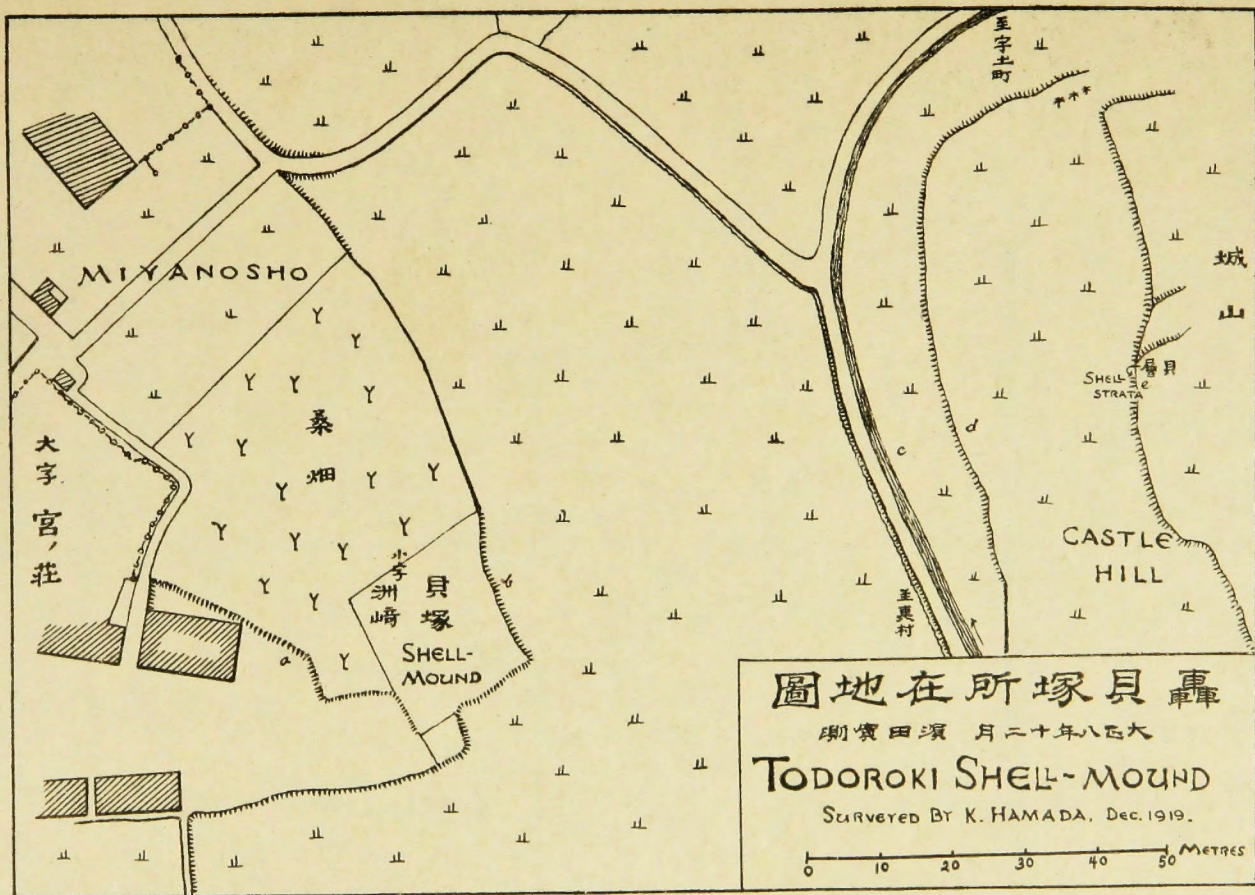


轟貝塚俯觀

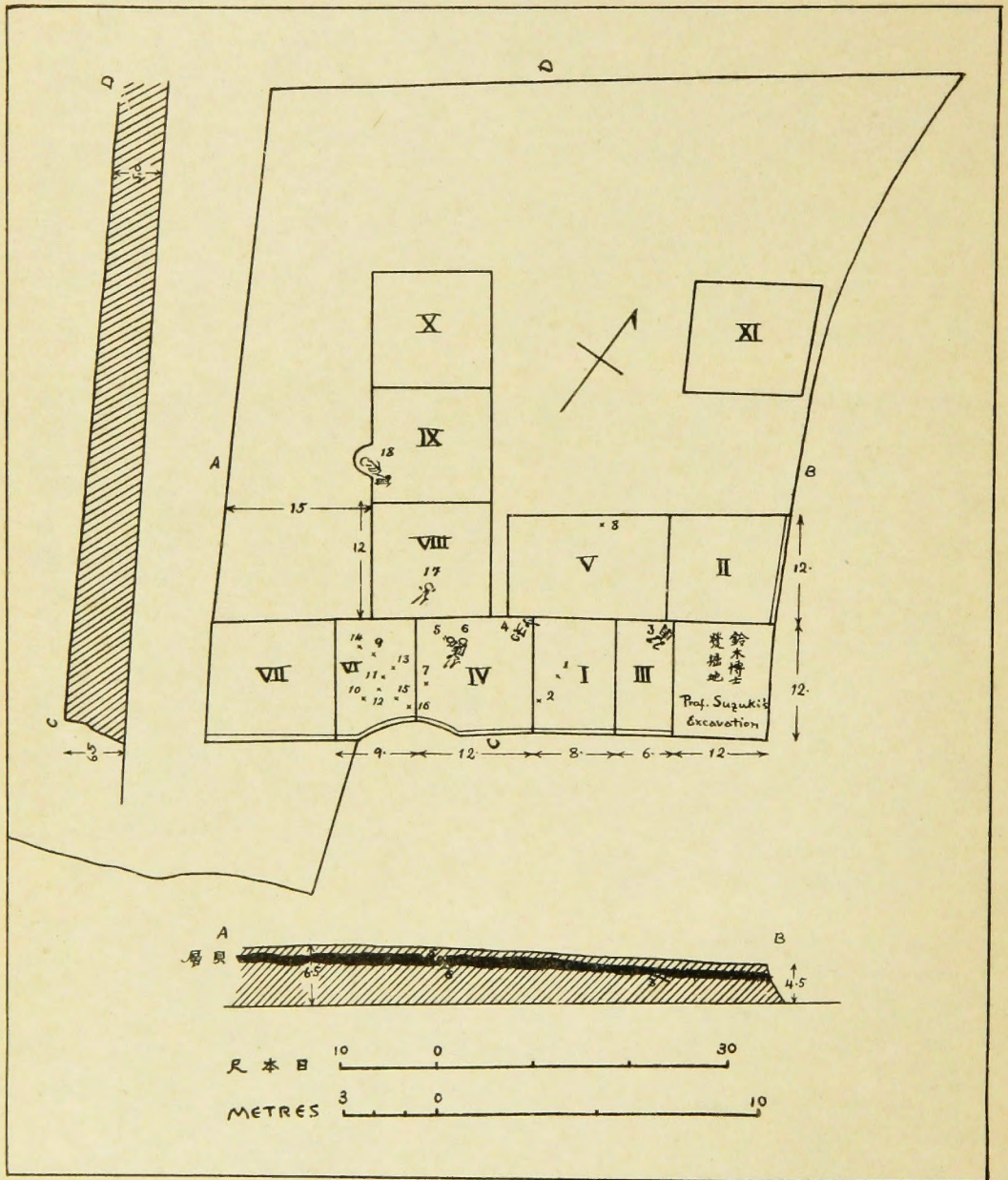
(矢線交叉點貝塚所在)



圖版第三五 森貝塚







圖布分骨人見發塚貝森





發掘光景

1



第四號人骨

No. 4

2



第六號人骨

No. 6

3

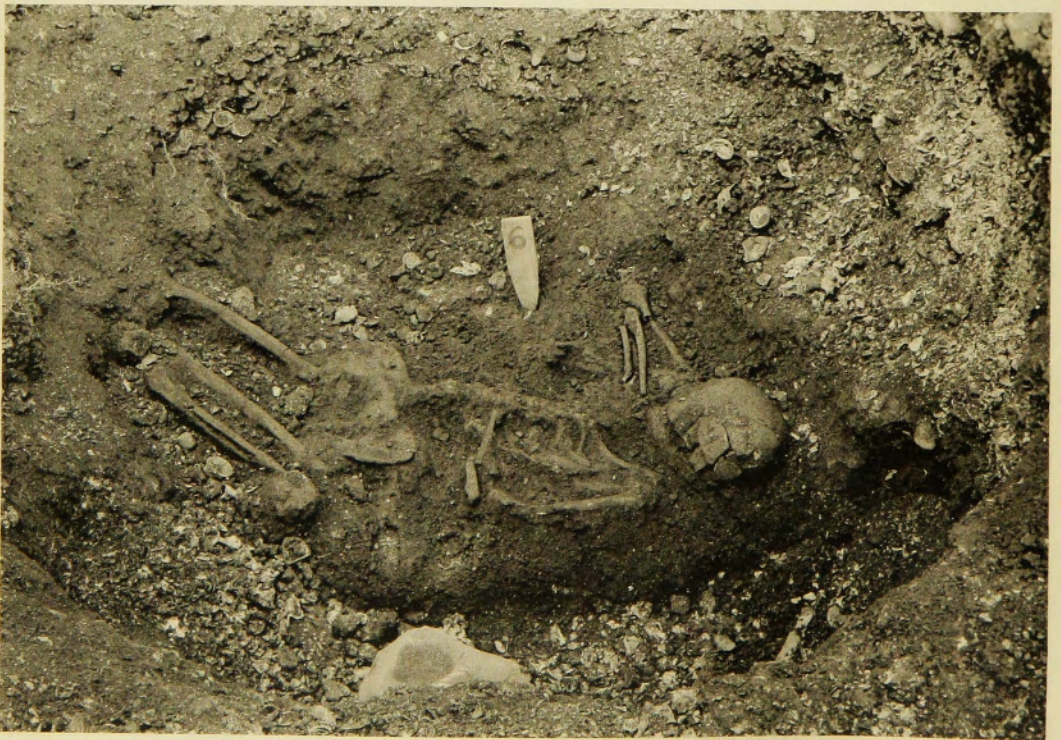




1

骨人 號四第

No. 4



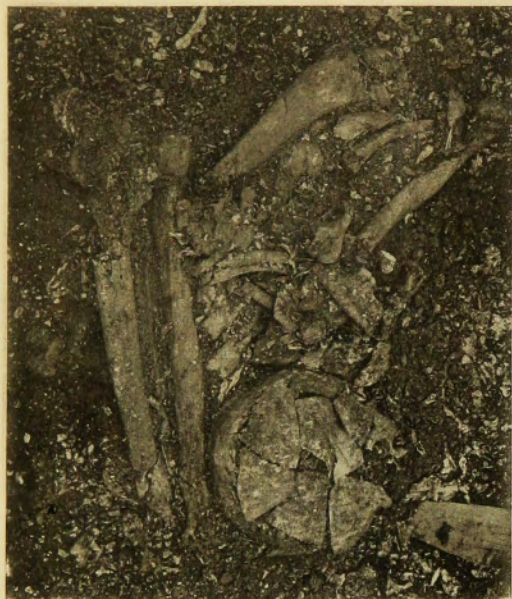
2

骨人 號六第

No. 6



No. 5



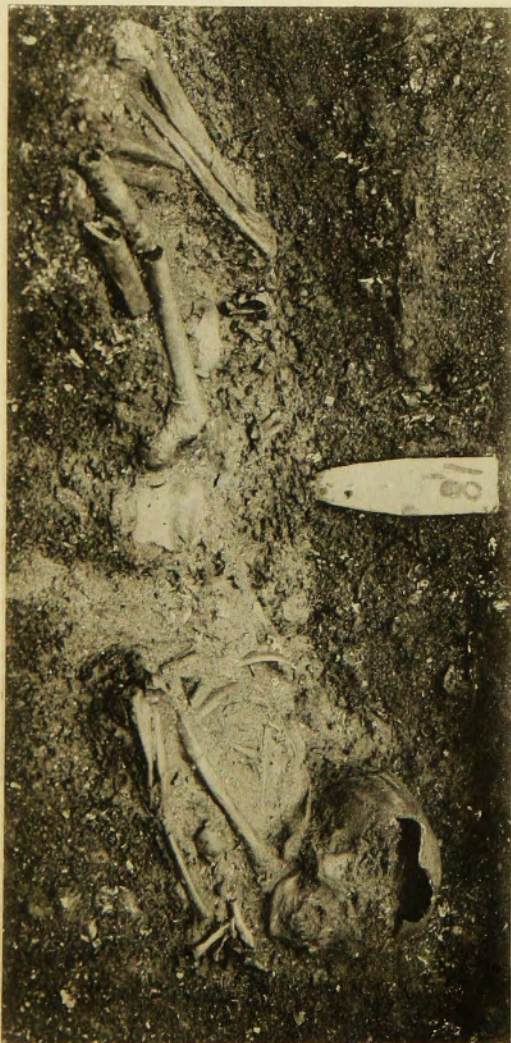
第五號 人骨

2



第十七號 人骨

1



第十八號 人骨

4

No. 18



第九號乃至第十四號 人骨

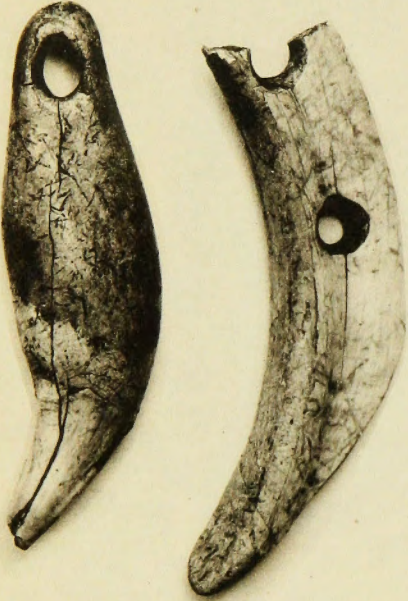
3

Nos. 9-14



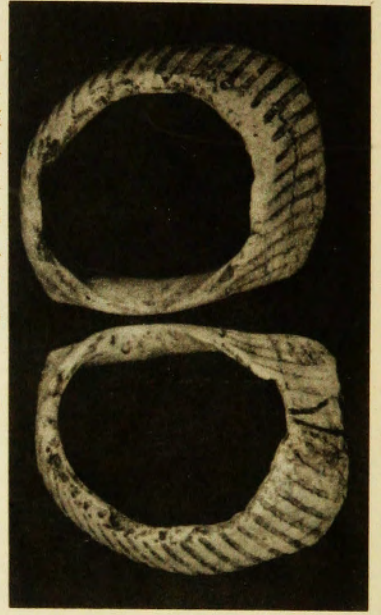
XI, Todoroki Shell-mound.

圖版第四〇 森貝塚



森貝塚發見牙製裝飾品 (一)

森貝塚第五號人骨佩用貝輪 (一)



森貝塚發見石器

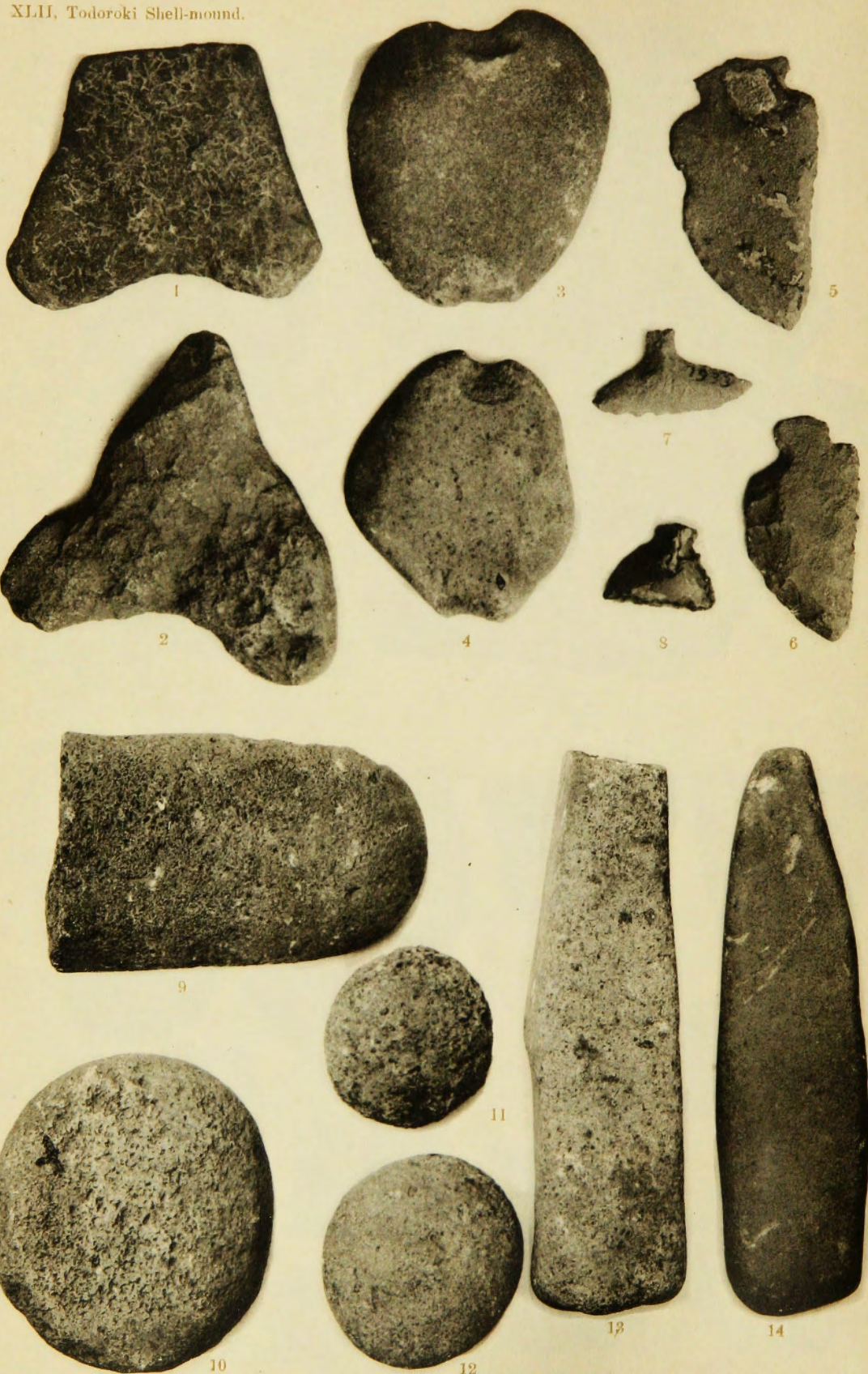


圖版第四一  
竊貝塚



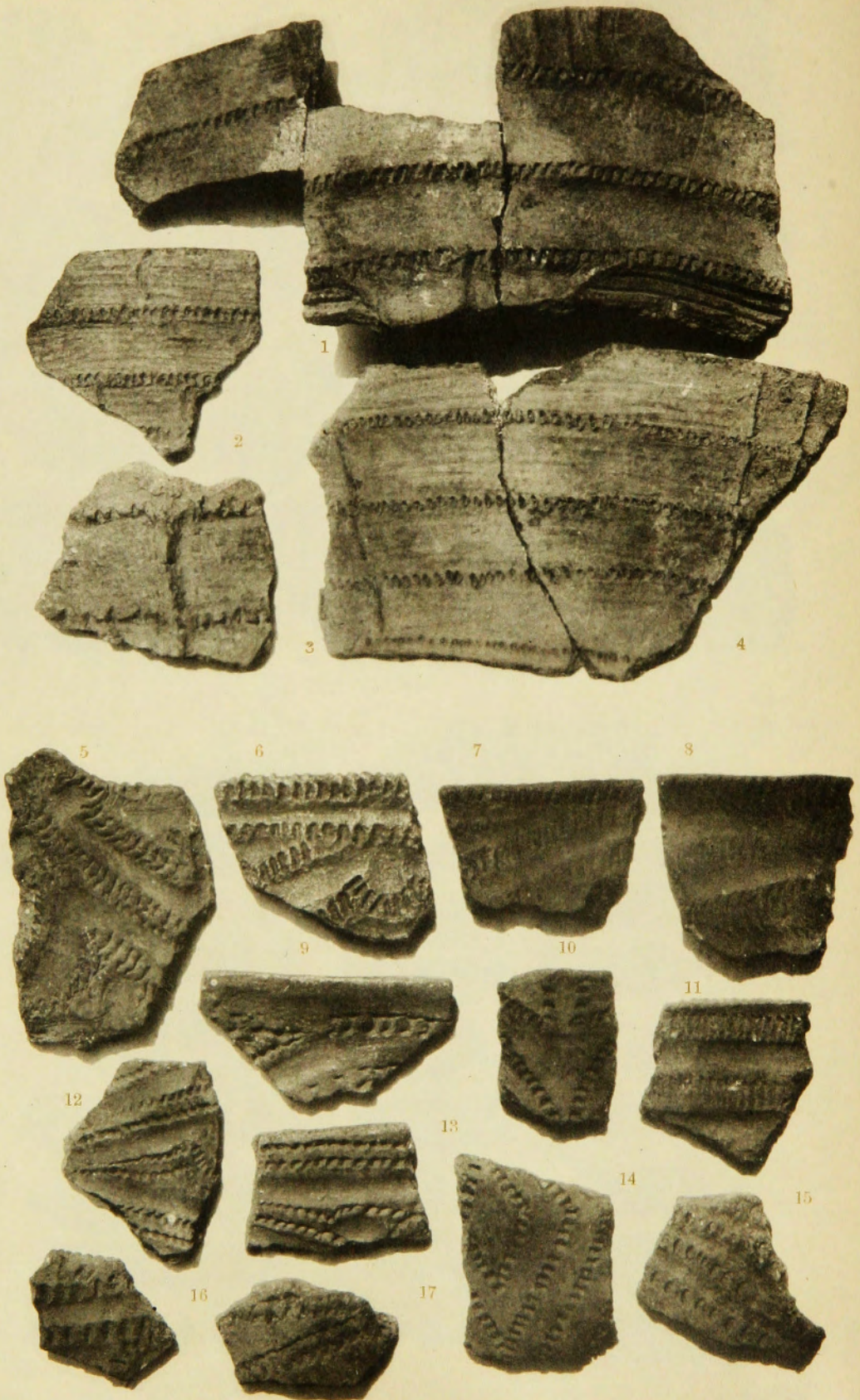
(面斷及面表) 斧石製磨見發塚貝竊





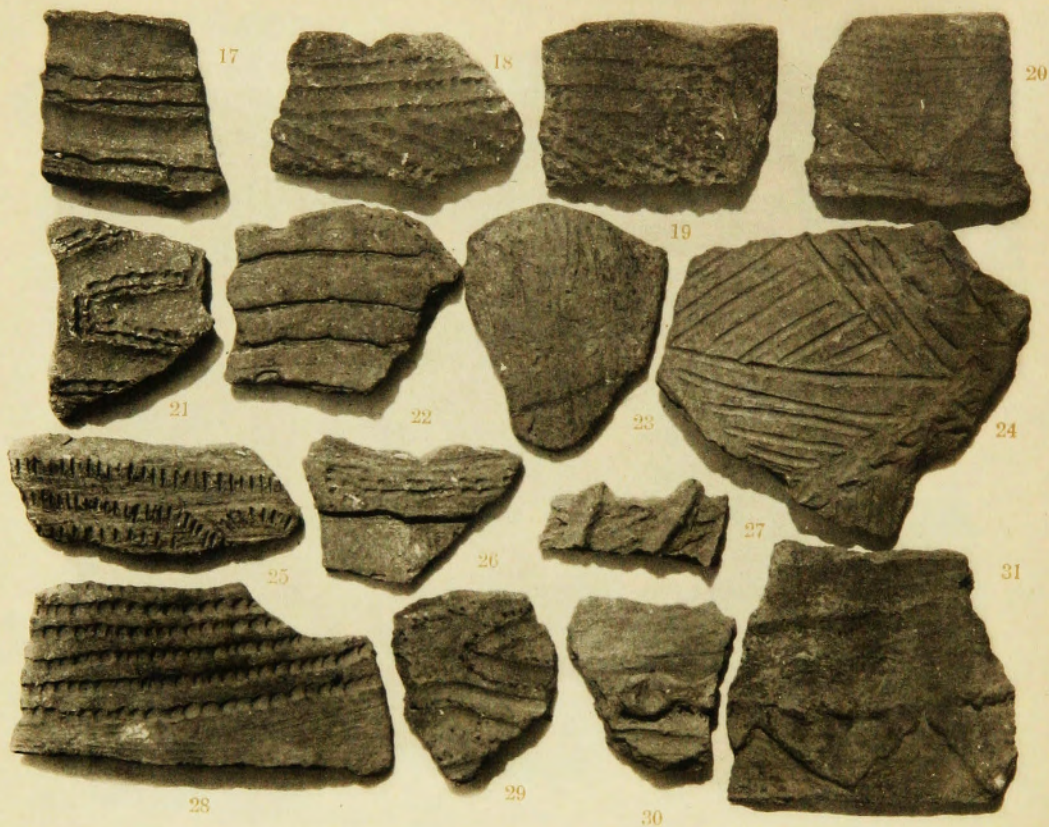


圖版第四三  
轟  
貝  
塚





圖版第四四  
轟  
貝  
塚



(土器上緣紋樣)

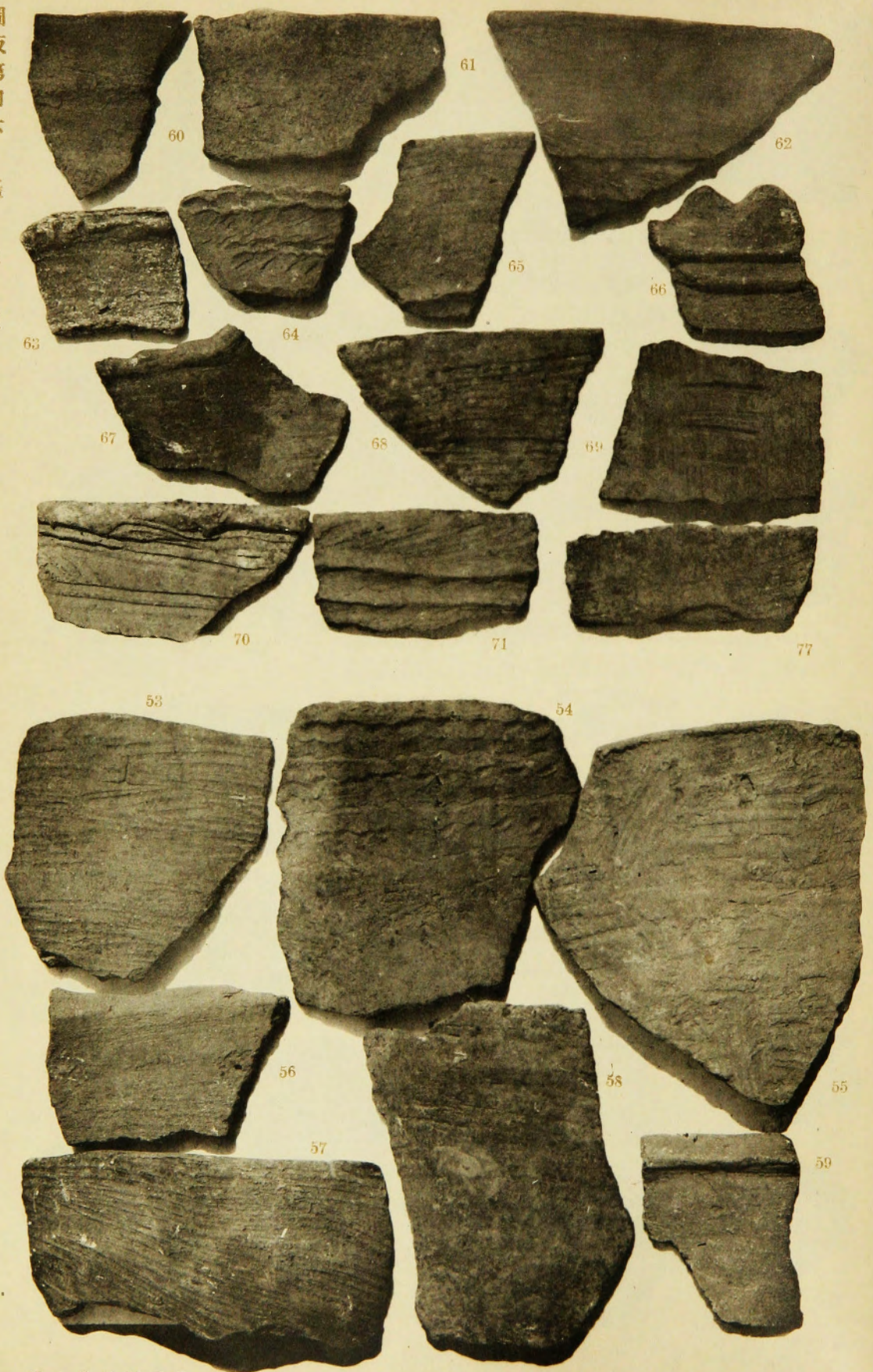
器土見發塚貝轟





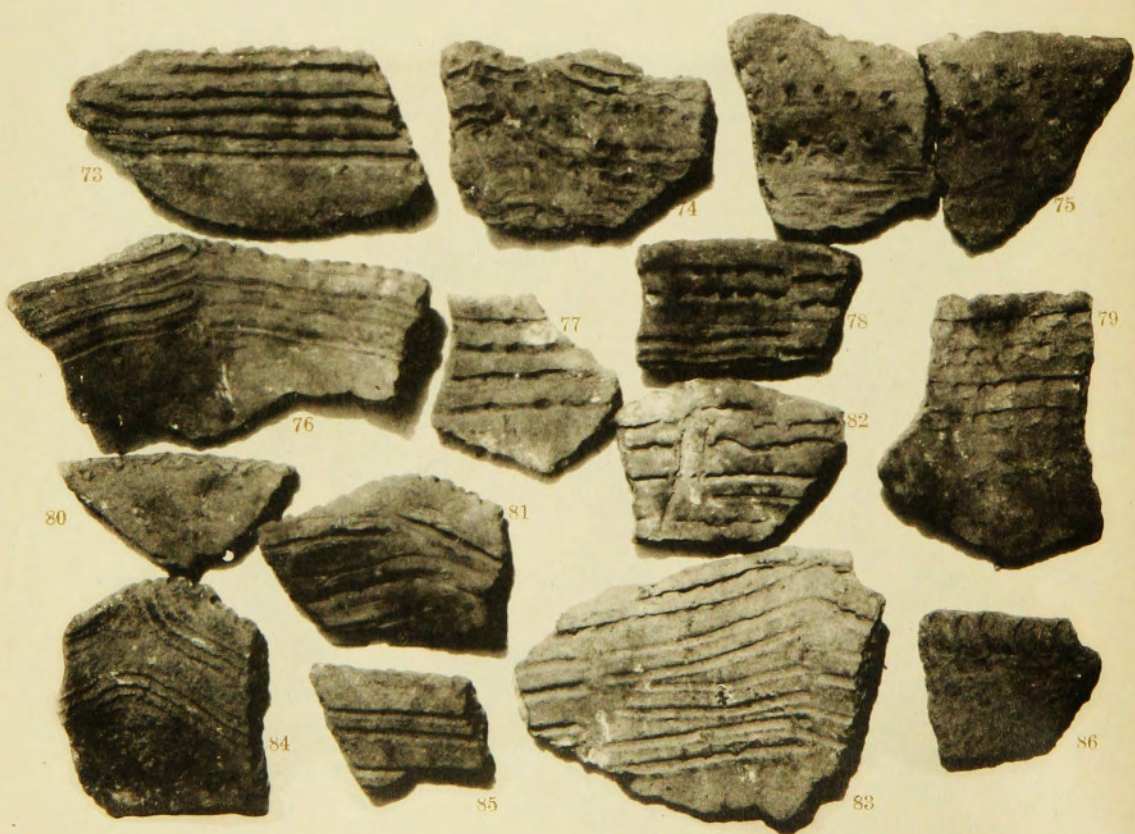


圖版第四六  
森貝塚



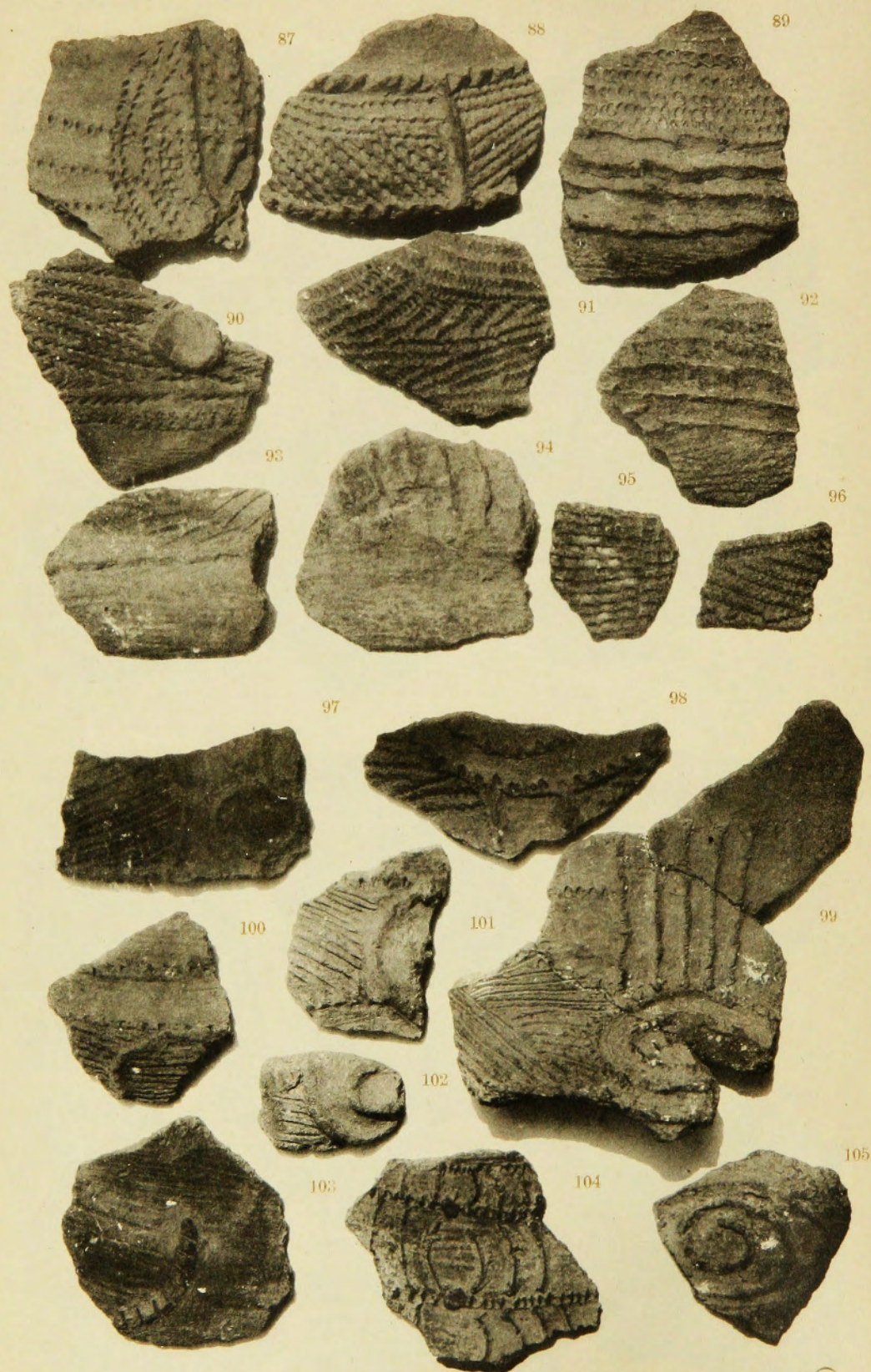


圖版第四七  
轟  
貝  
塚



器土見發塚貝轟





蠶貝塚發見土器



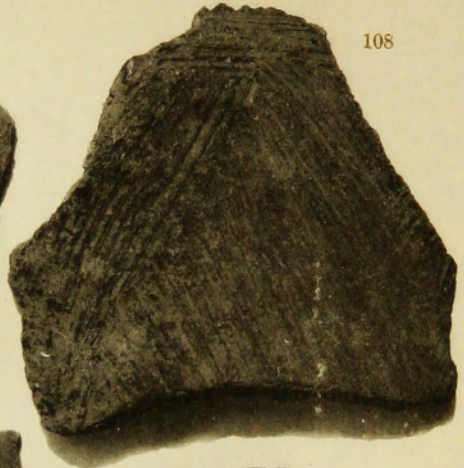
圖版第四九  
蟲貝塚



106



107



108



109



110



111



112

113



114



116



117



118



119



120

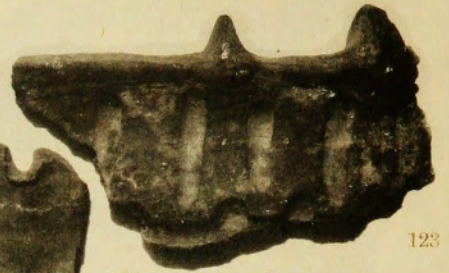




121



122



123



124



125



126



127



128



129



130



131



132



133



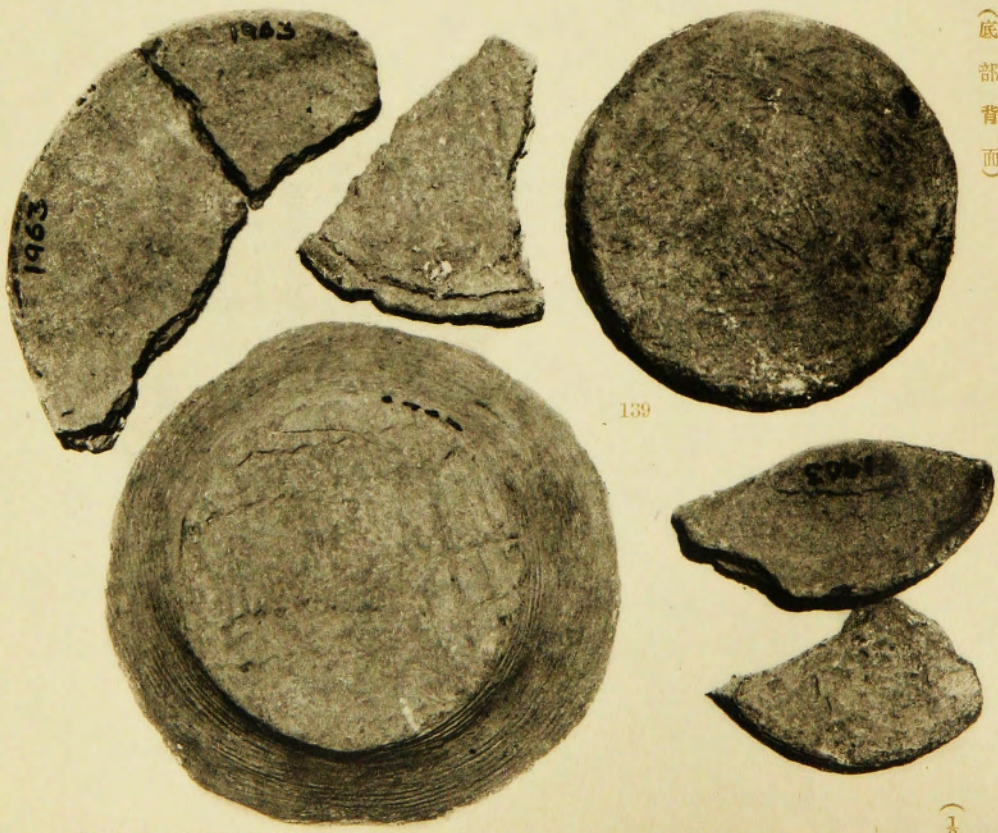
134



(底部側面)

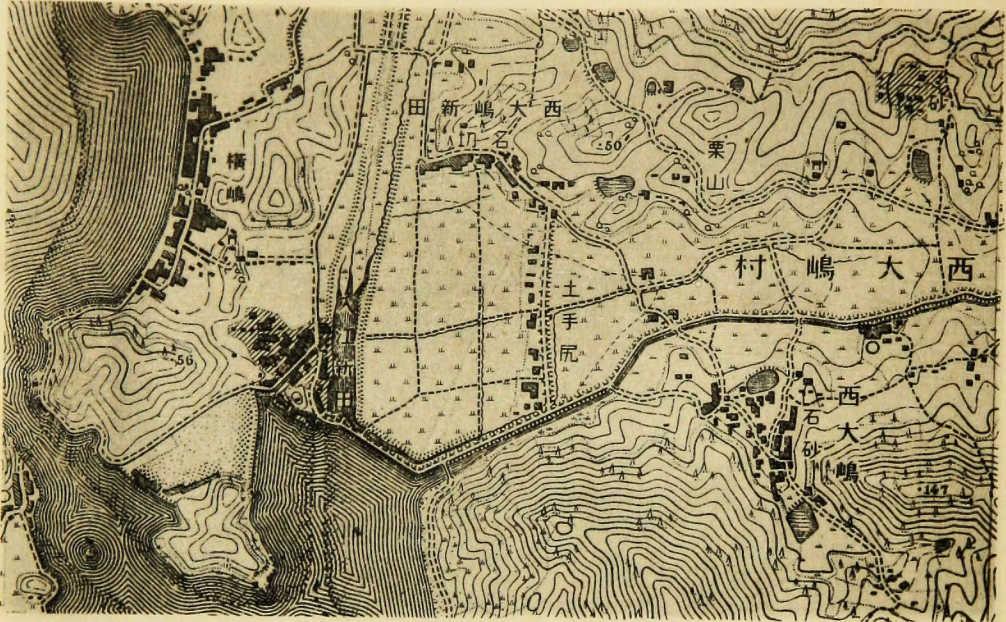


(底部背面)



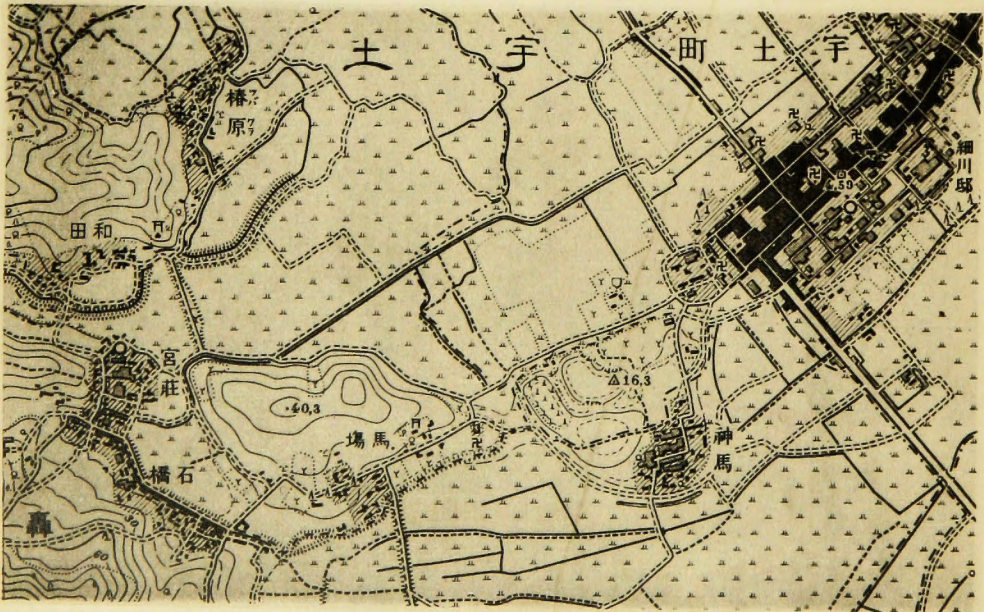
器土見發塚貝蟲





(陸地測量部二萬分一地形圖笠岡號分載)

津雲貝塚附近地形圖



(陸地測量部二萬分一地形圖宇土號分載)

轟貝塚附近地形圖

