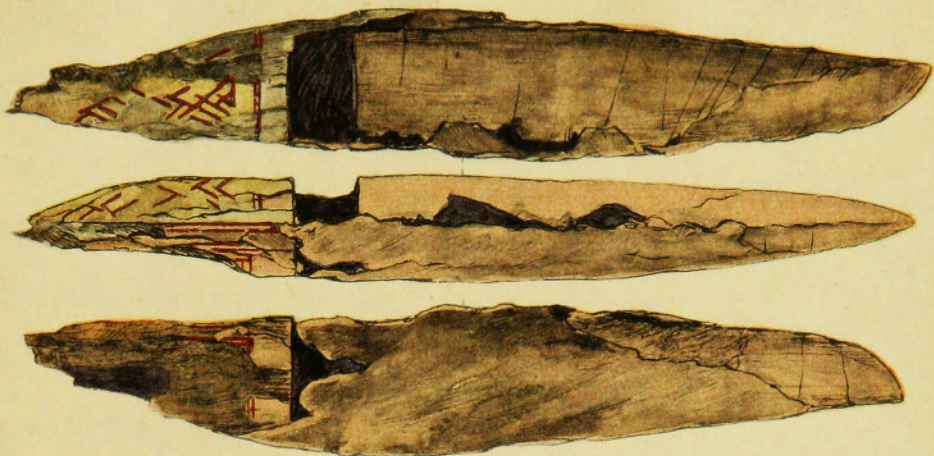


卷首圖版

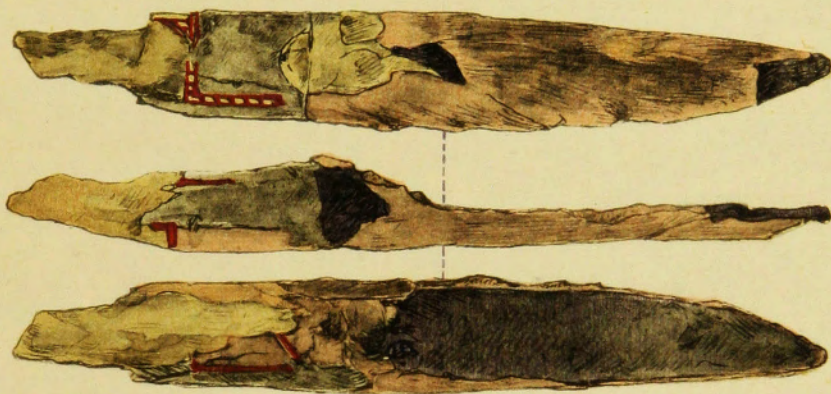
鹿角柄皮鞘刀子

(近江國高島郡水尾村古墳出土)

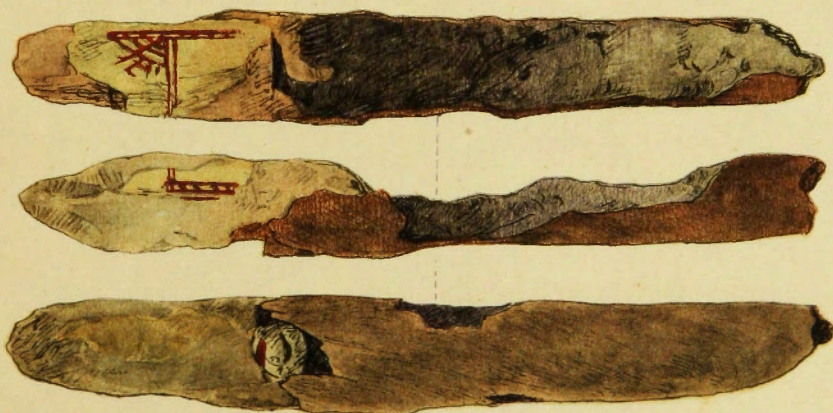
1



2



3



圖

版

PLATES

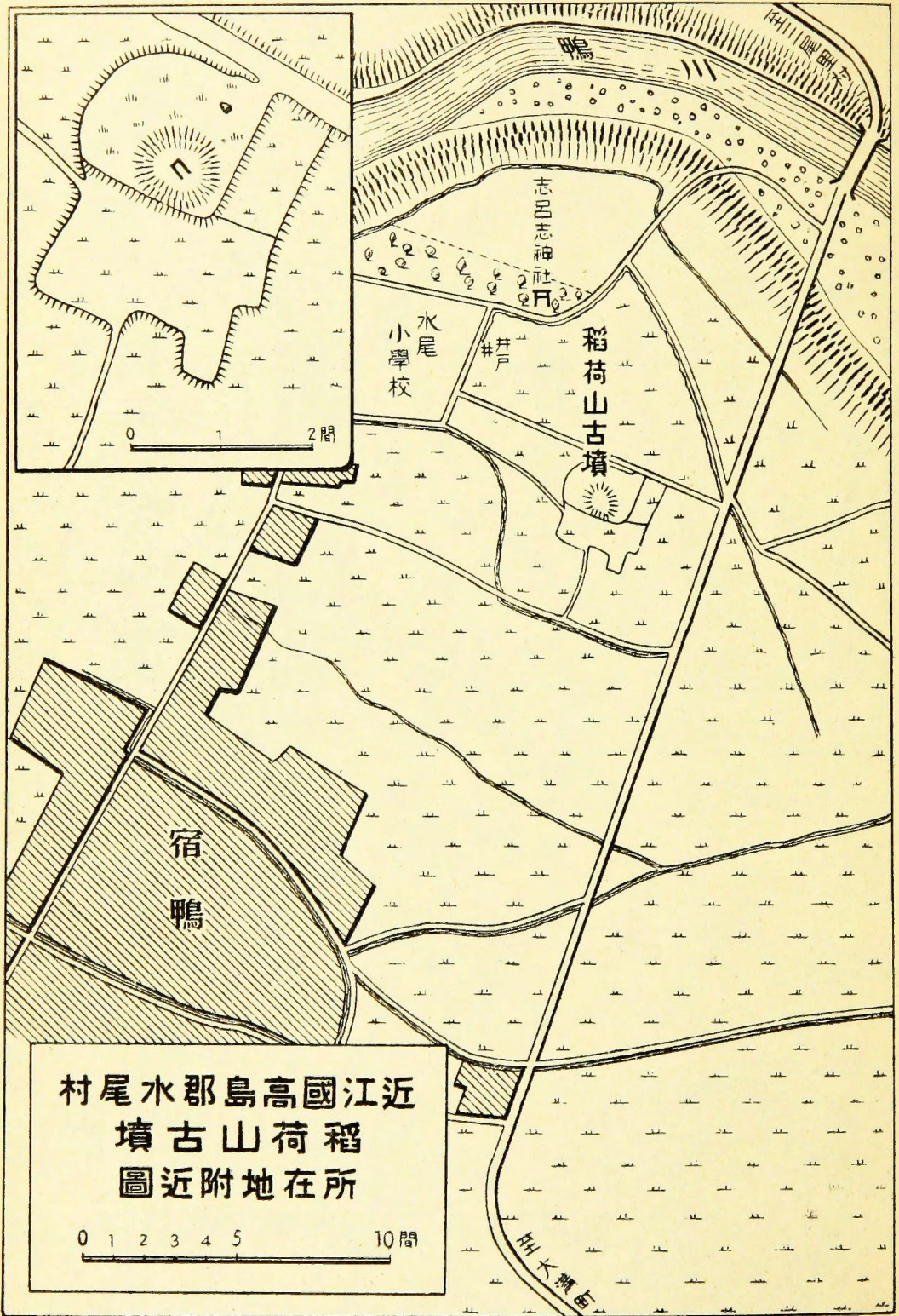
〔鈴木寫眞・桑名製版〕



狀現墳古山荷稻



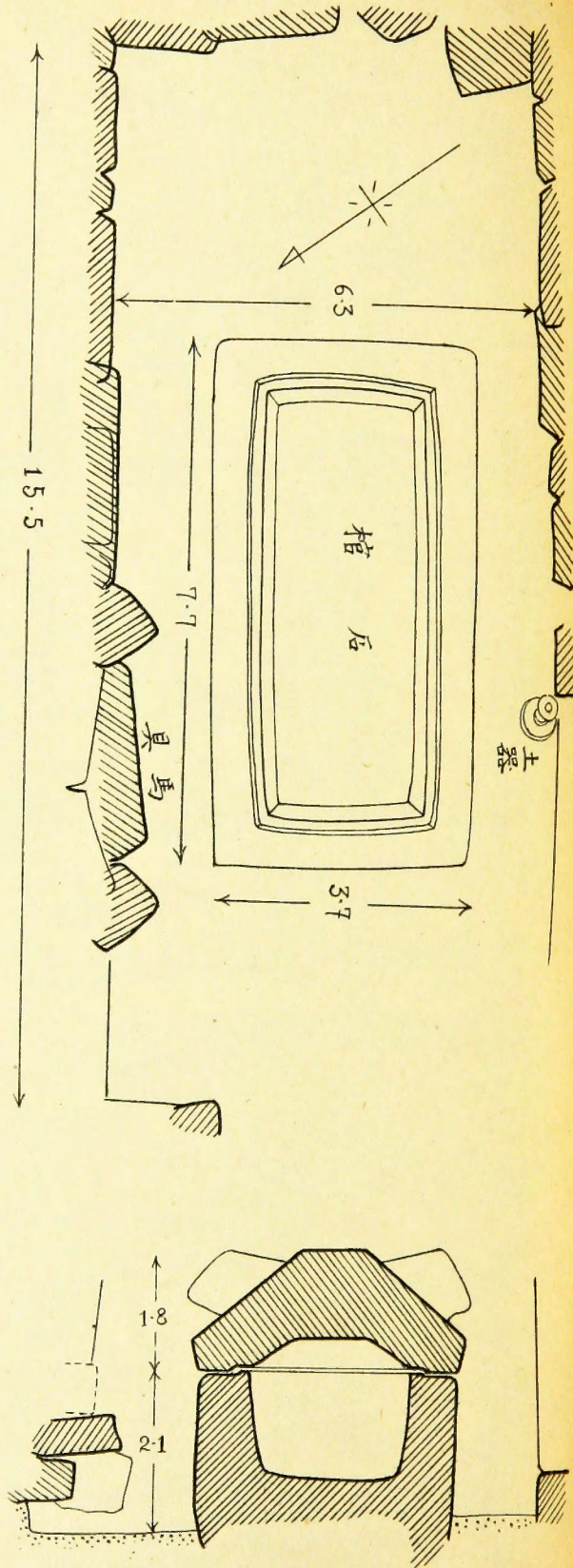
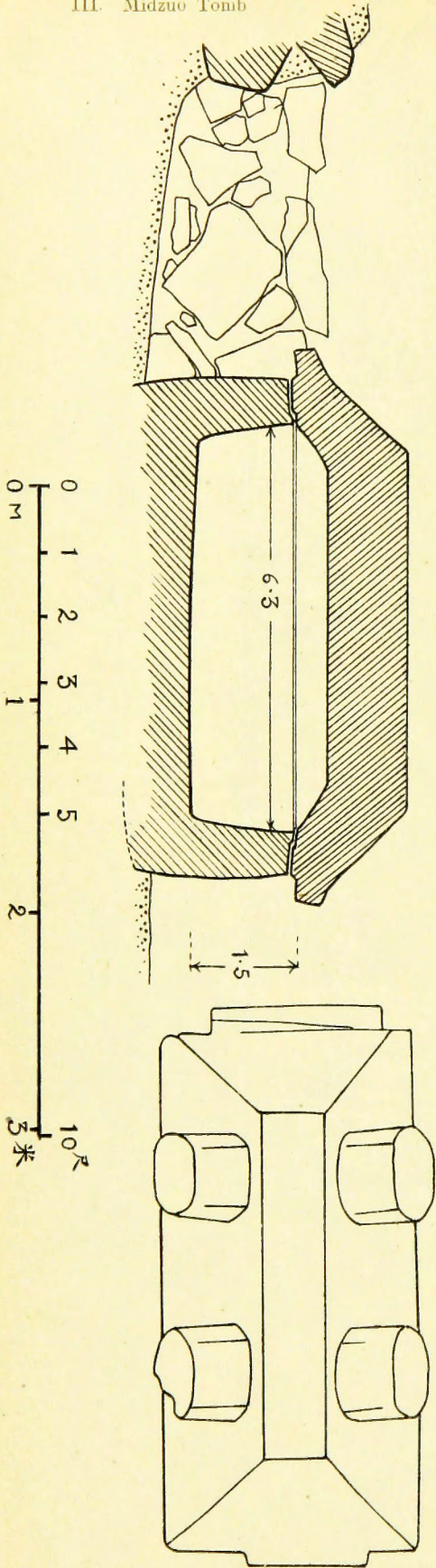
棺石掘發上同

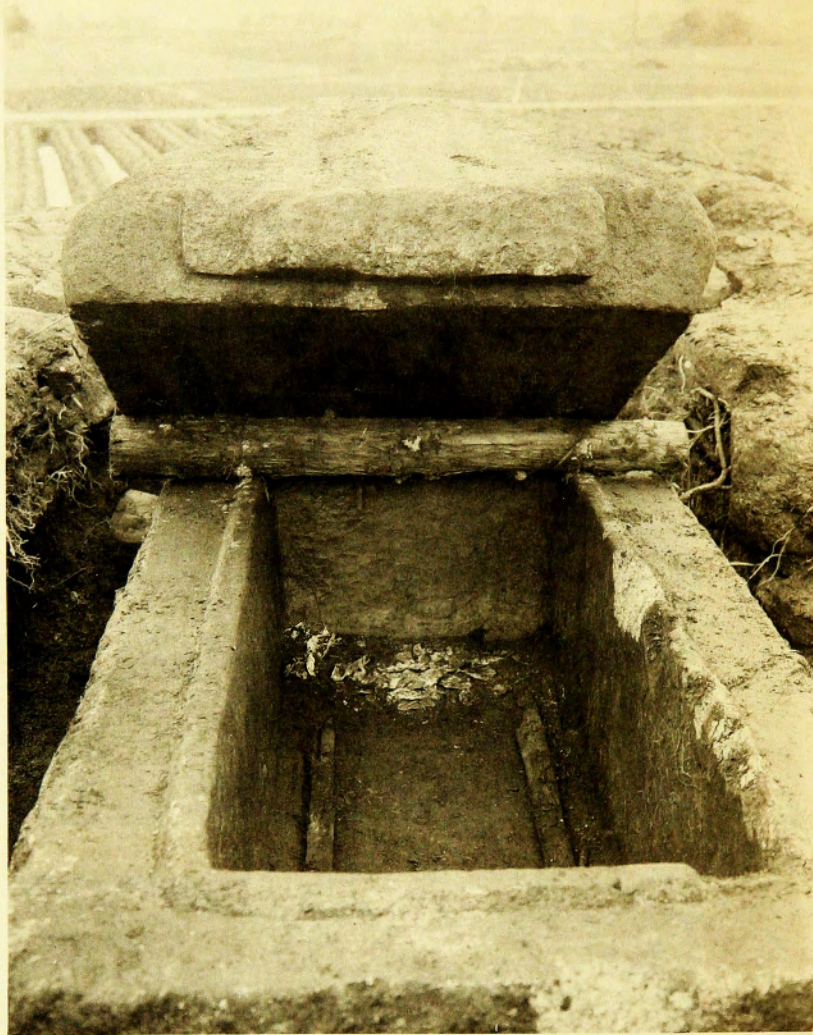


近江國高島郡水尾村
稻荷山古墳
所在地附近圖

0 1 2 3 4 5 10 間

III. Midzuo Tomb





稻荷山古墳石棺開口(上)及蓋部(下)



圖版第五

近江國水尾村鴨古墳



(東南部)

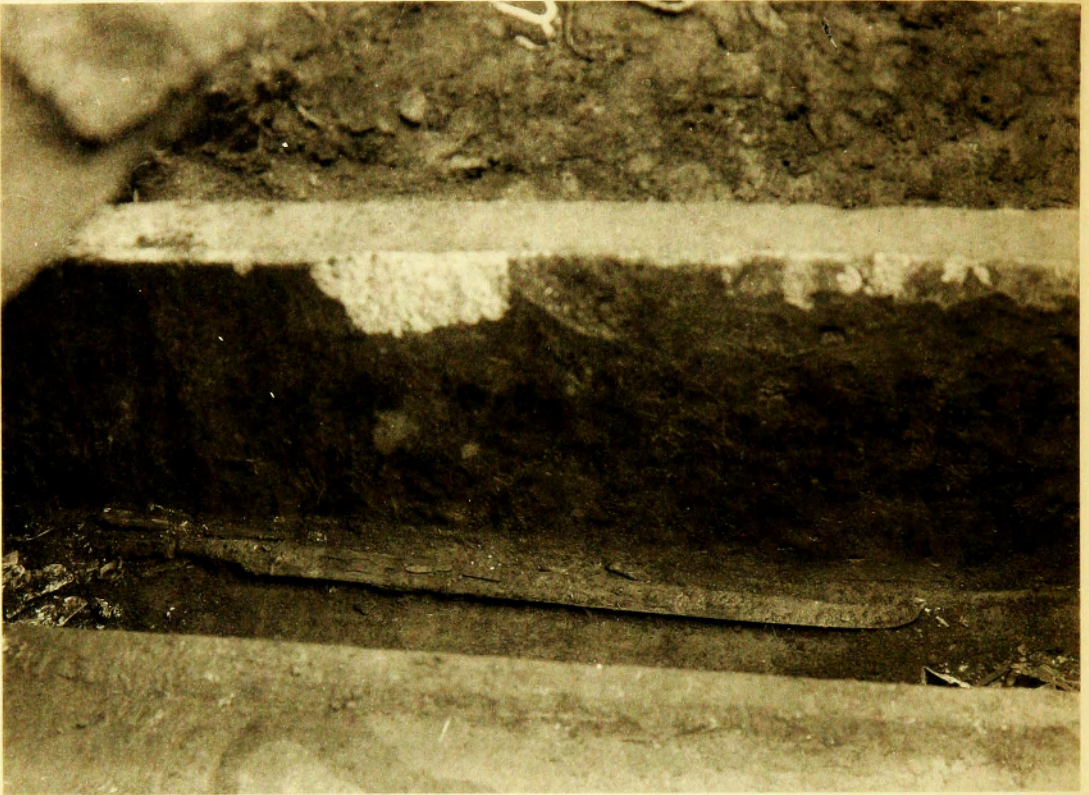


(西北部)

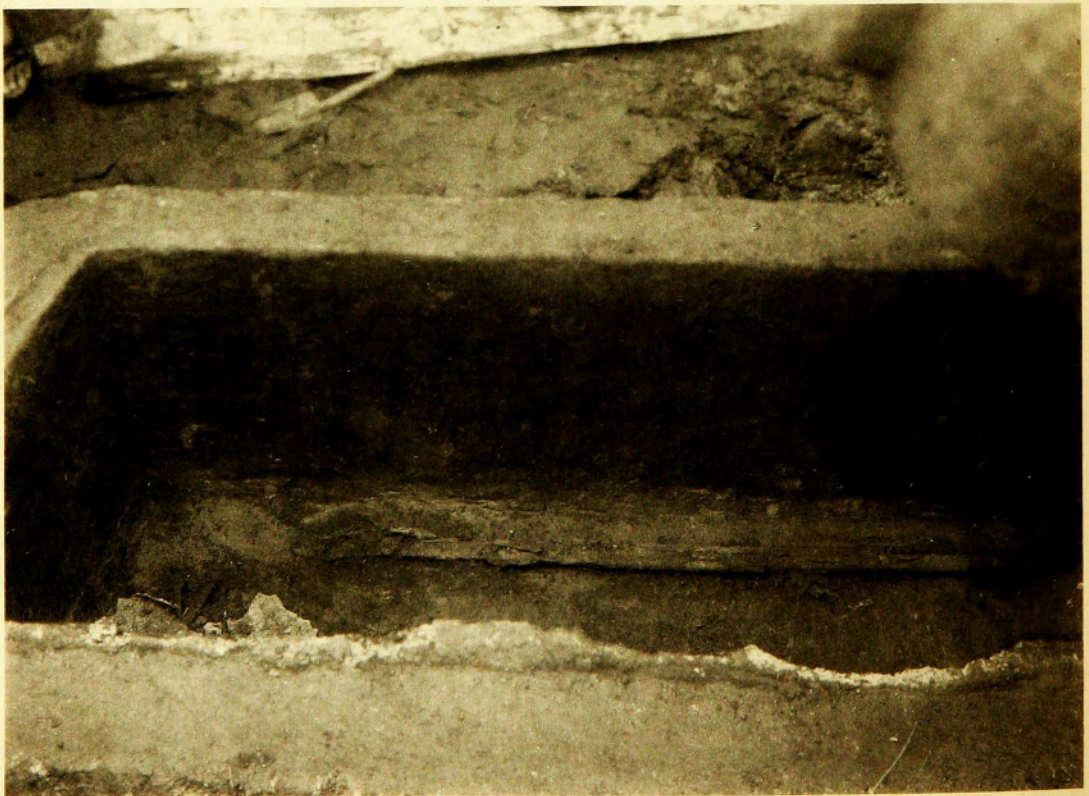
觀俯部內棺石墳古山荷稻

圖版第六

近江國水尾村鴨古墳



(西南側)

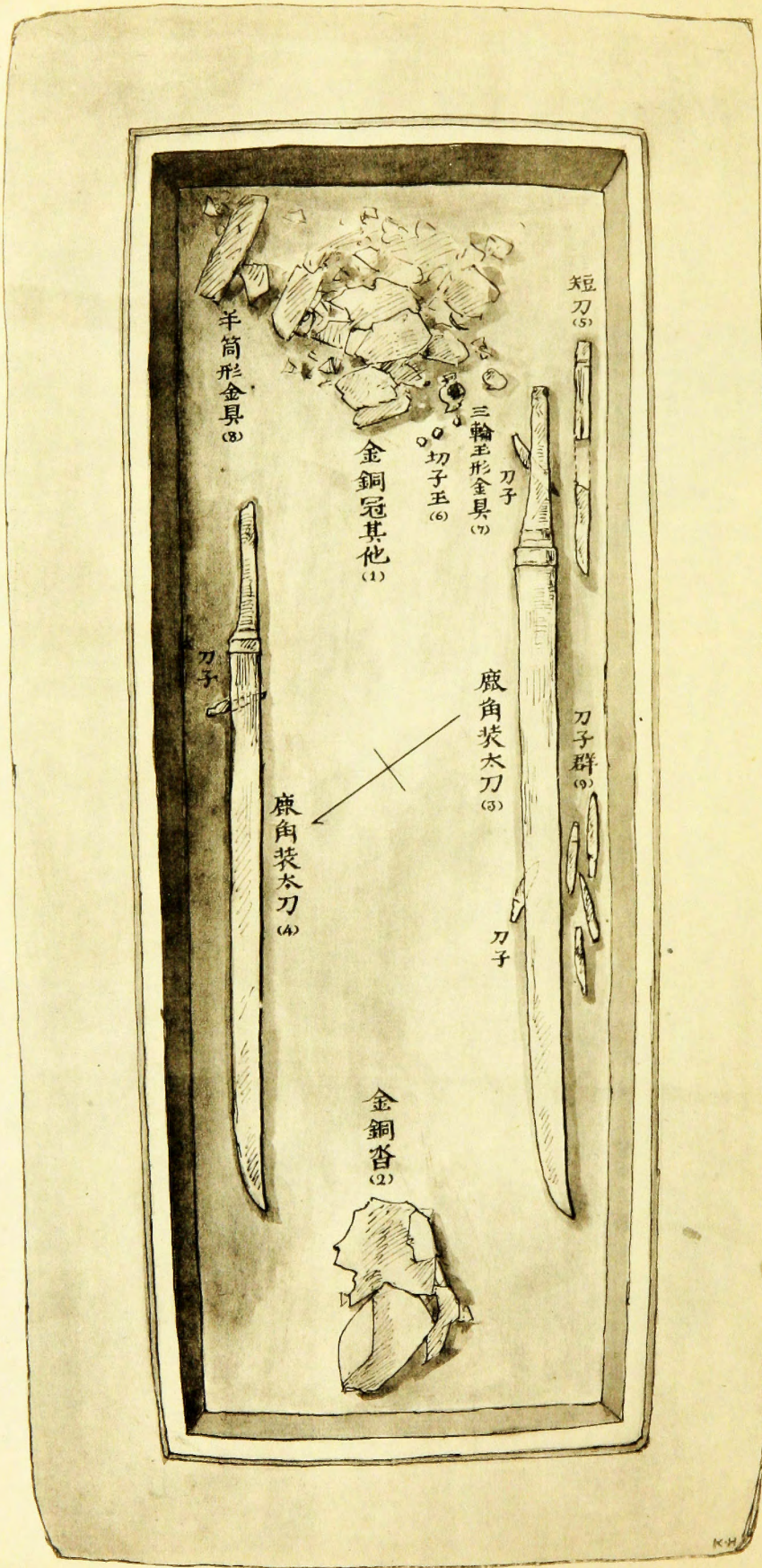


(東北側)

觀面側部內棺石墳古山荷裕

圖版第七

近江國水尾村鴨古墳



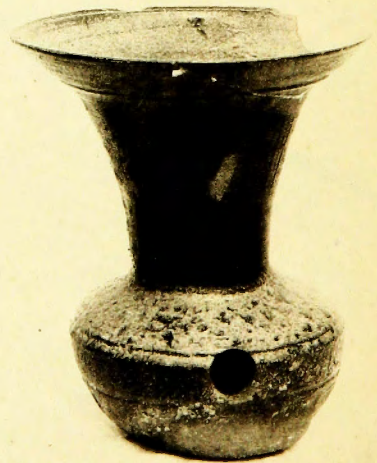
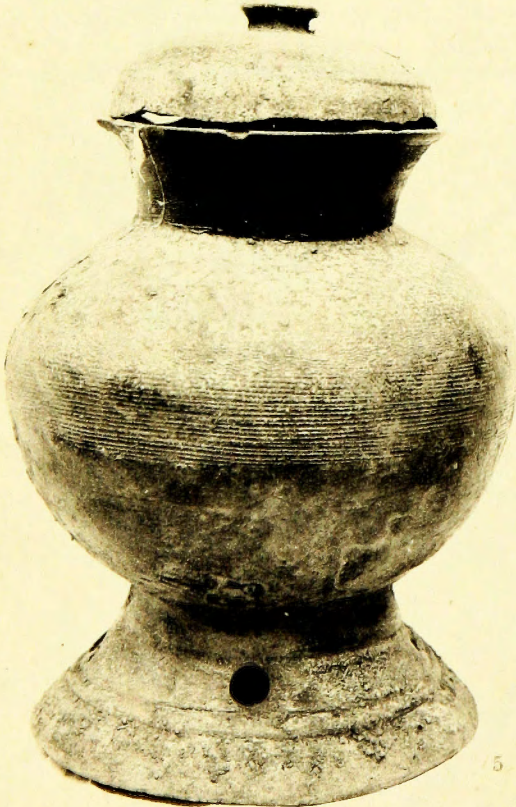
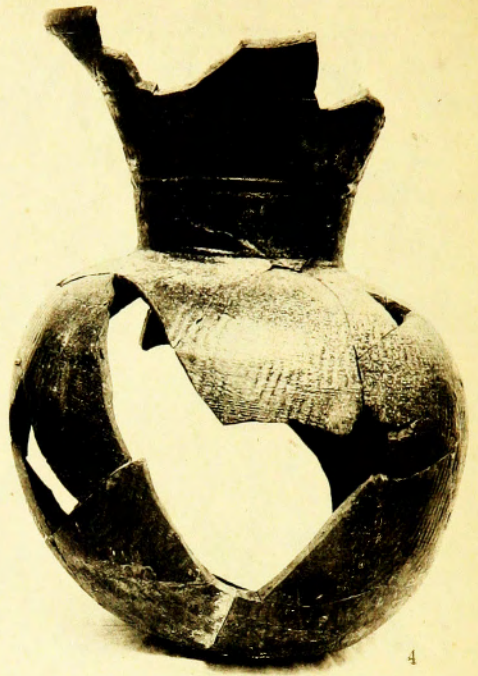
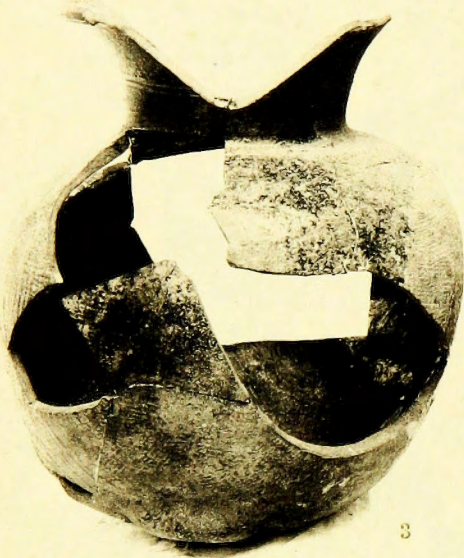
- (1) 金銅冠其他 (Gilt bronze adadem, Acc.)
- (2) 金銅沓 (Gilt bronze shoes)
- (3) 鹿角裝太刀 (Long sword with antler ornaments)
- (4) 鹿角裝太刀 (Long sword with antler ornaments)
- (5) 短刀 (Short sword)
- (6) 刀子群 (Kiriko beads)
- (7) 半筒形金具 (Mirvadamu-shaped ornaments)
- (8) 刀子 (Small knives)
- (9) 金銅冠其他 (Gilt bronze adadem, Acc.)

圖版第八

近江國水尾村鴨古墳

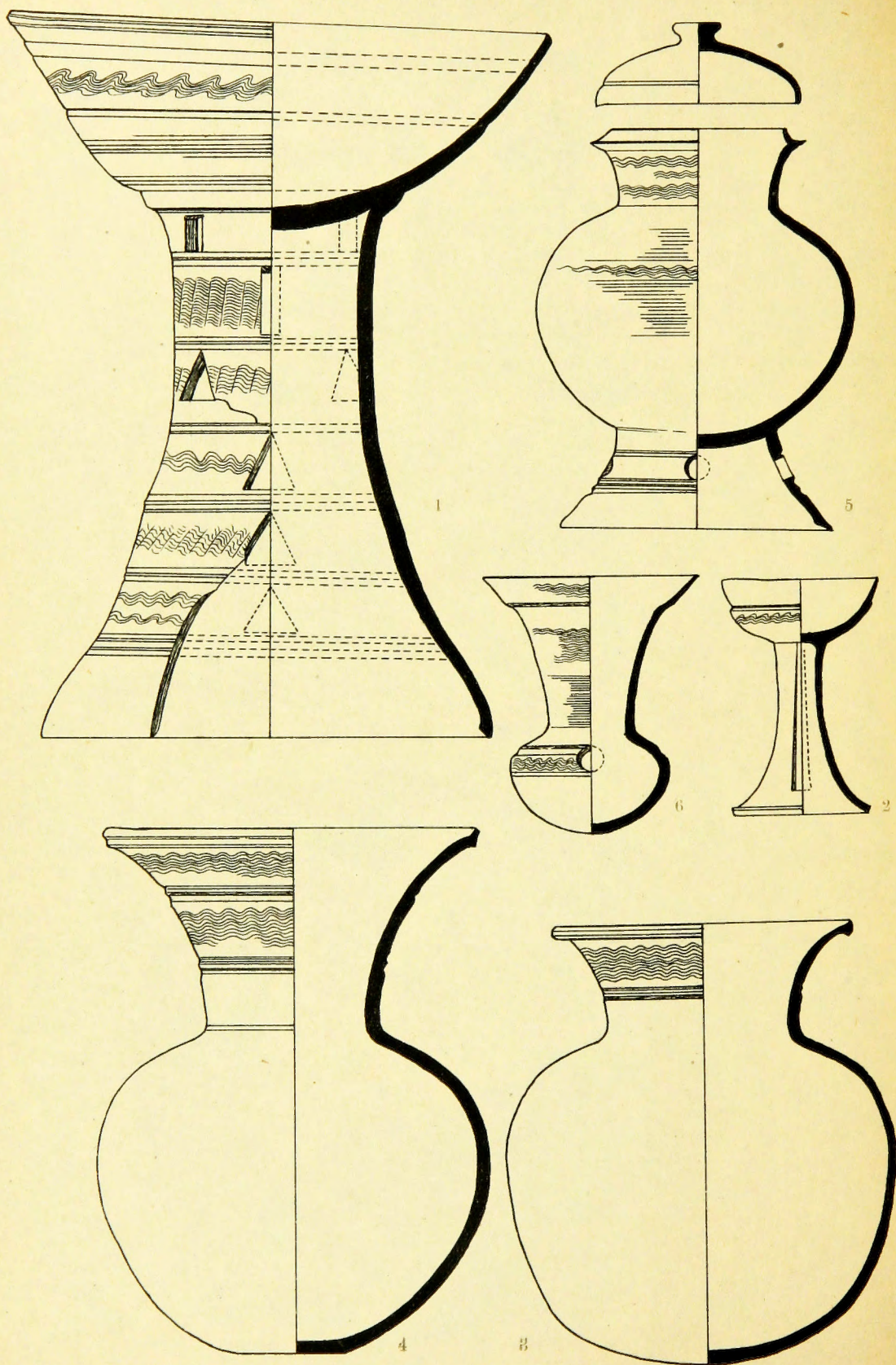


(一) 器土見發墳古山荷稻



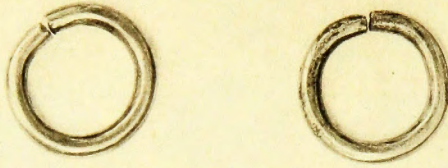
圖版第一〇

近江國水尾村鴨古墳

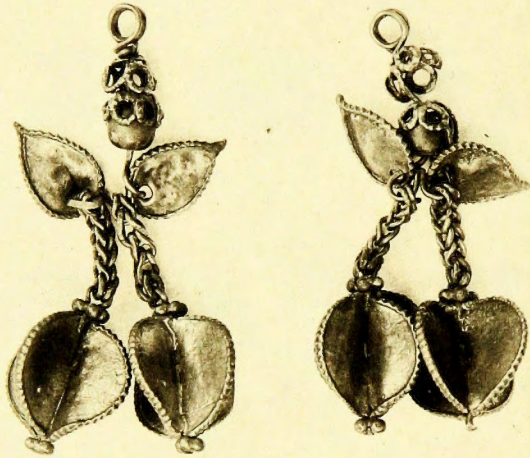


圖版第一

近江國水尾村鴨古墳



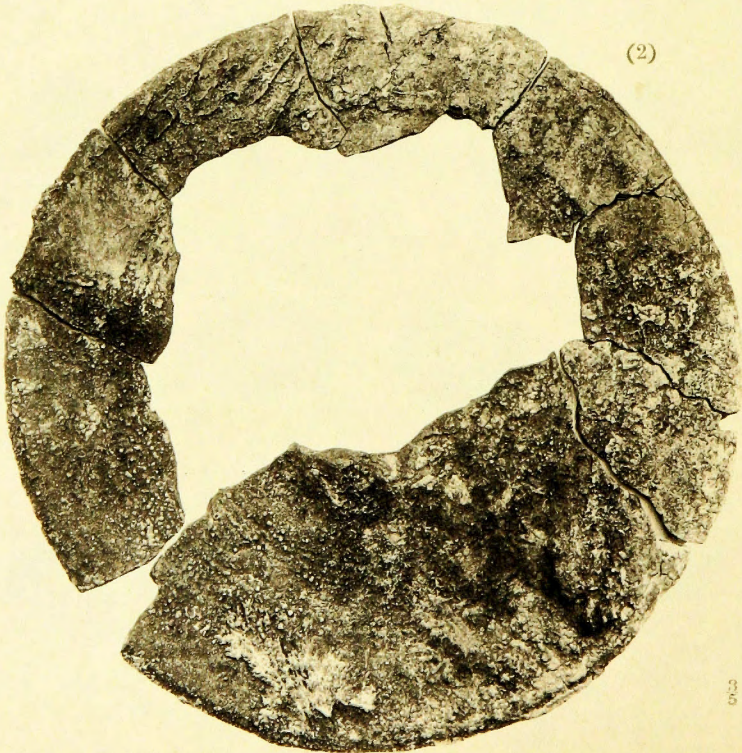
(1)



1

飾耳製金見發墳古山荷稻

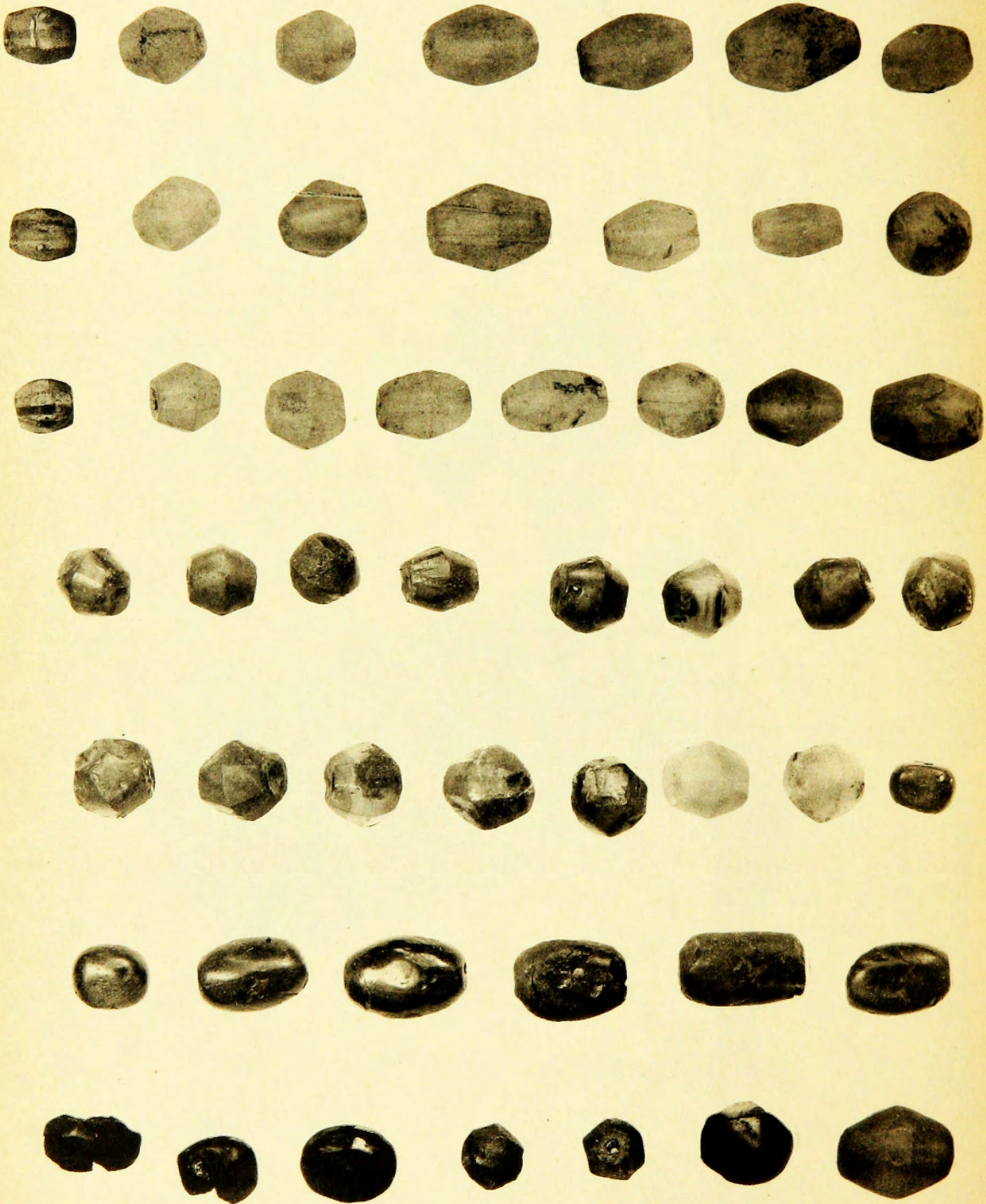
(2)



2

鏡銅上同

XII. Midzuo Tomb



玉璽及玉子切見發墳古山荷稻

圖版第一二
近江國水尾村鴨古墳

XIII. Mideno Tomb

圖版第一三

近江國水尾村鴨古墳

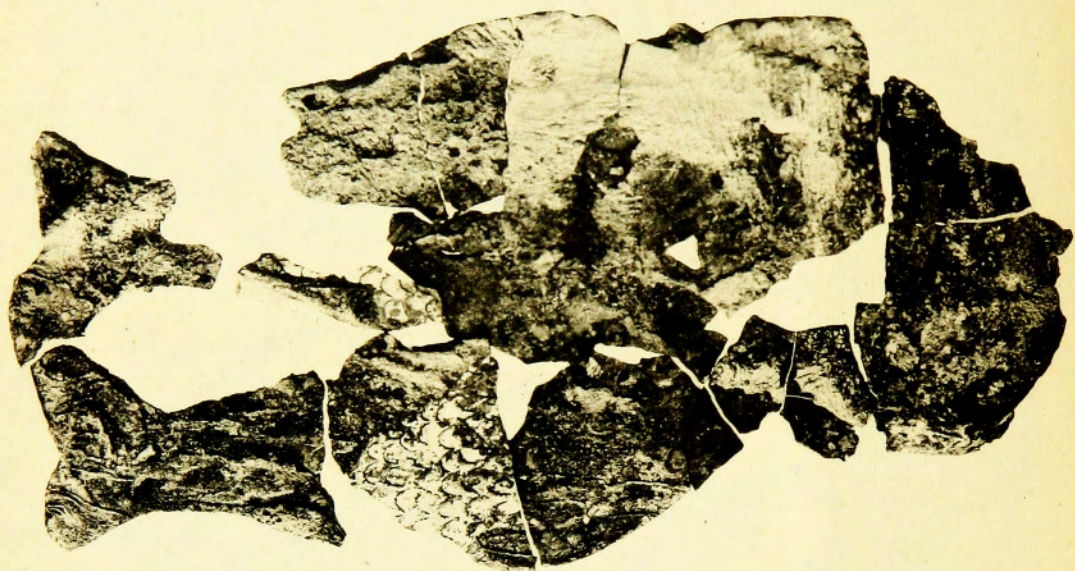


冠製銅金見發墳古山資標

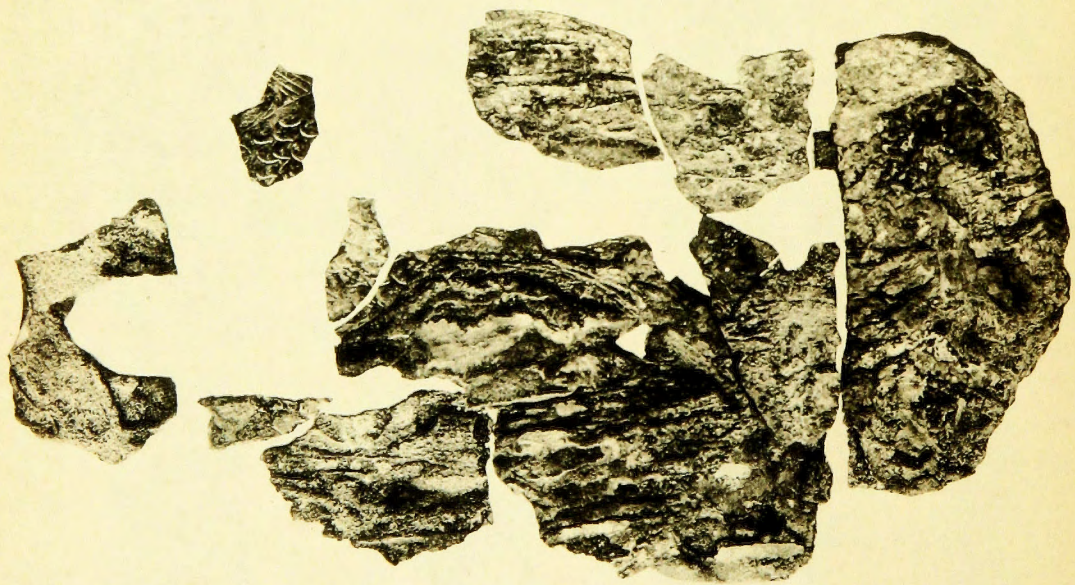
XIV. Midzuo Tomb

圖版第一四

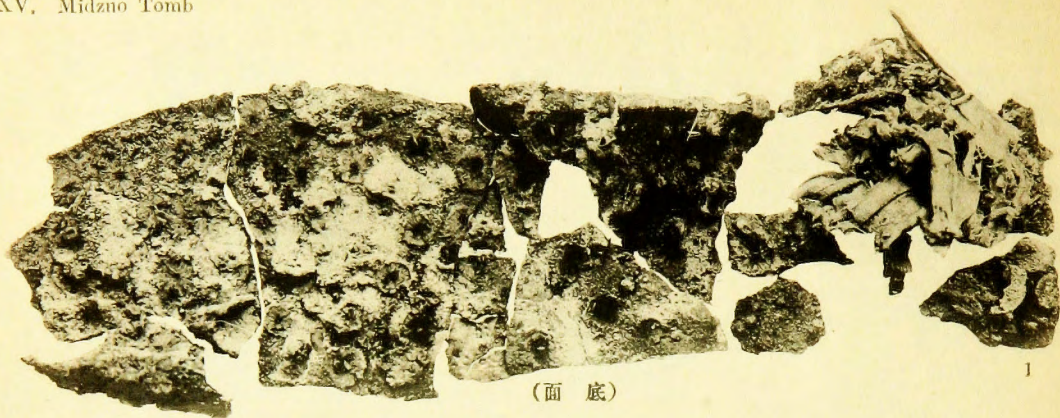
近江國水尾村鴨古墳



約
2/3

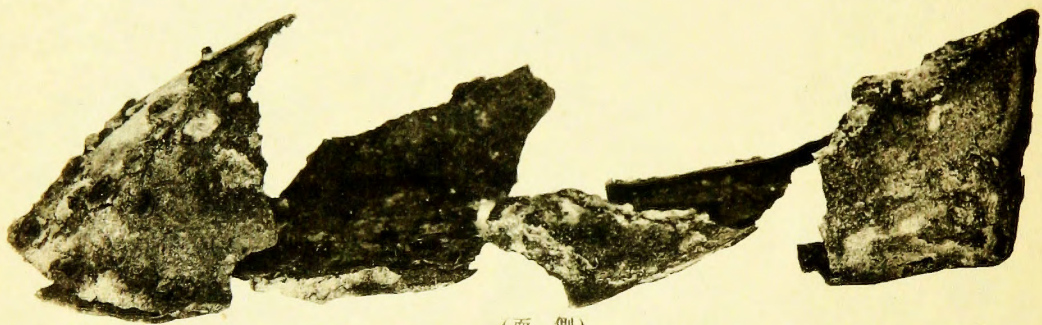


佩魚雙製銅金見發墳古山荷稻



(面底)

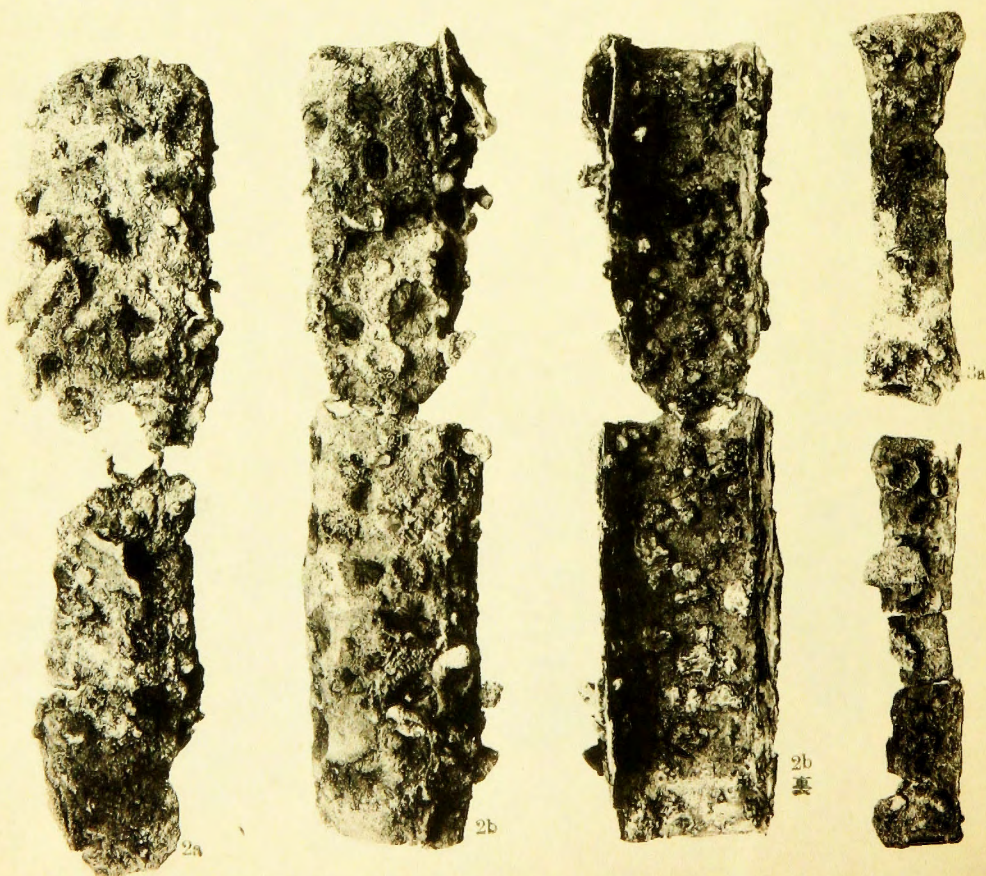
1



(面側)

稻荷山古墳發見金銅製沓(1) 同上半筒形金具(2) 及雜金具(3)

約 1/2

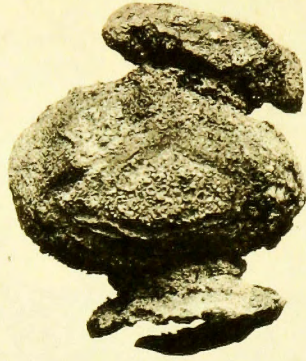
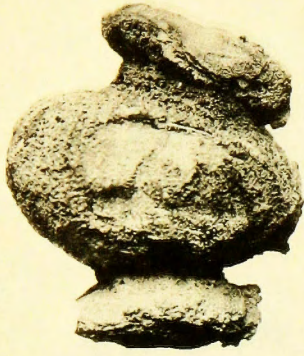


2a

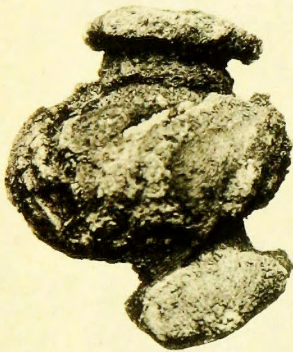
2b

2b

3b



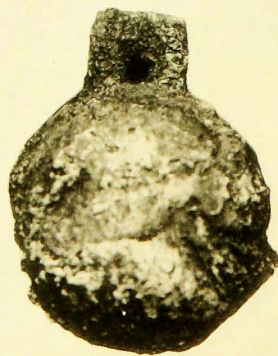
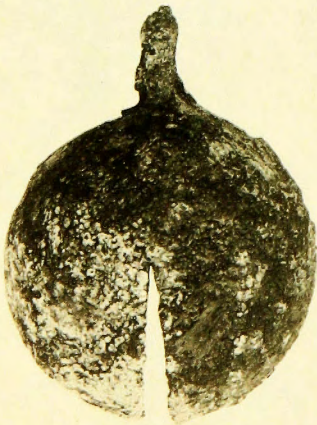
1



2



3



4

（稻荷山古墳發見金銅製三輪玉形金具（1） 銀製金具（2））

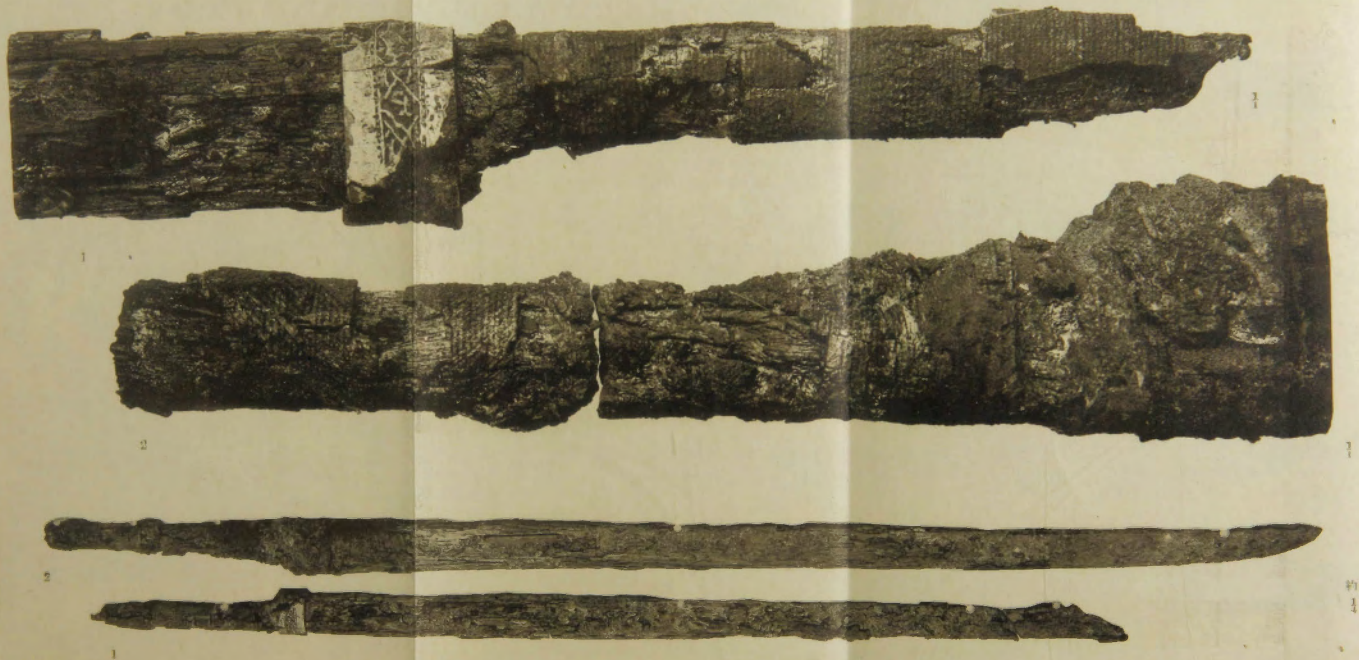
同上金銅製半球形金具（3） 銅鈴（4）



(2)部一上同及刀頭環同 (1)刀短柄角鹿見發墳古山高稻

約
寸

約
寸



部柄上屬及口二刀太持角鹿見發墳古山荷稻

圖版第一九

近江國水尾村鴨古墳



1

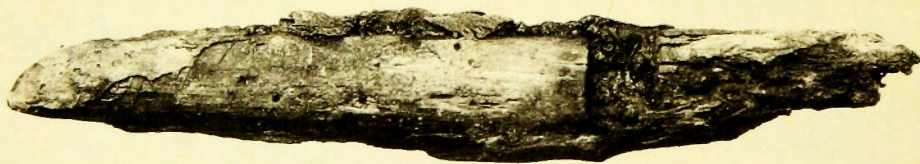


3



2

(面表)



1

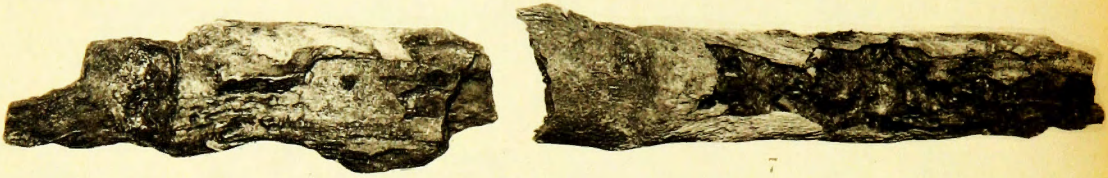


3



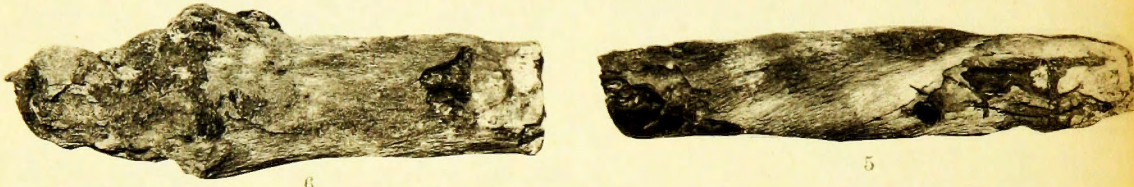
2

(面裏)



8

7



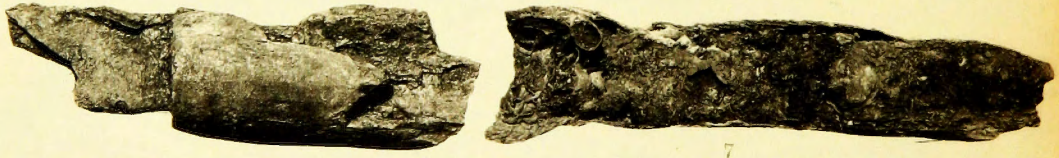
6

5



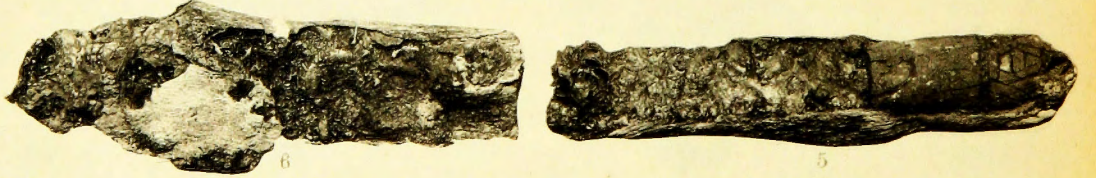
4

(面表)



8

7



6

5



4

(面裏)

稻荷山古墳發見鹿角柄刀子五口

圖版第二一

近江國水尾村鴨古墳



(橋前)

約
1/4

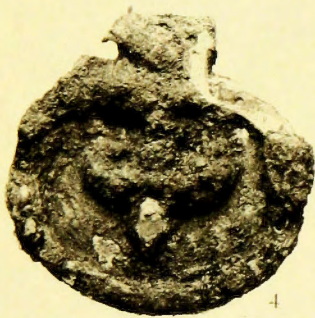
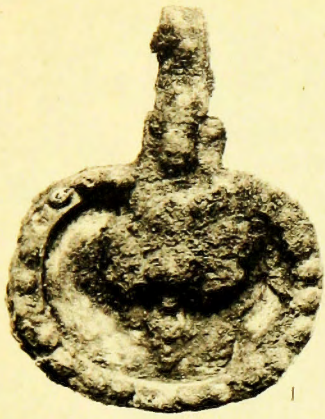


(橋後)

部飾裝銅金鞍見發墳古山荷稻

圖版第二二

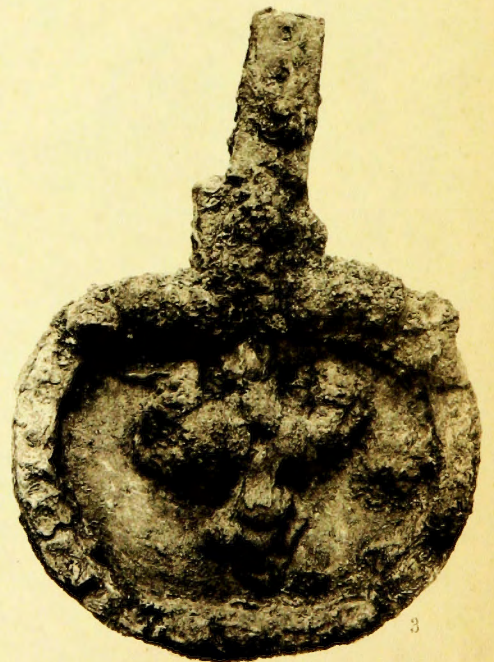
近江國水尾村鳴古墳



(12)



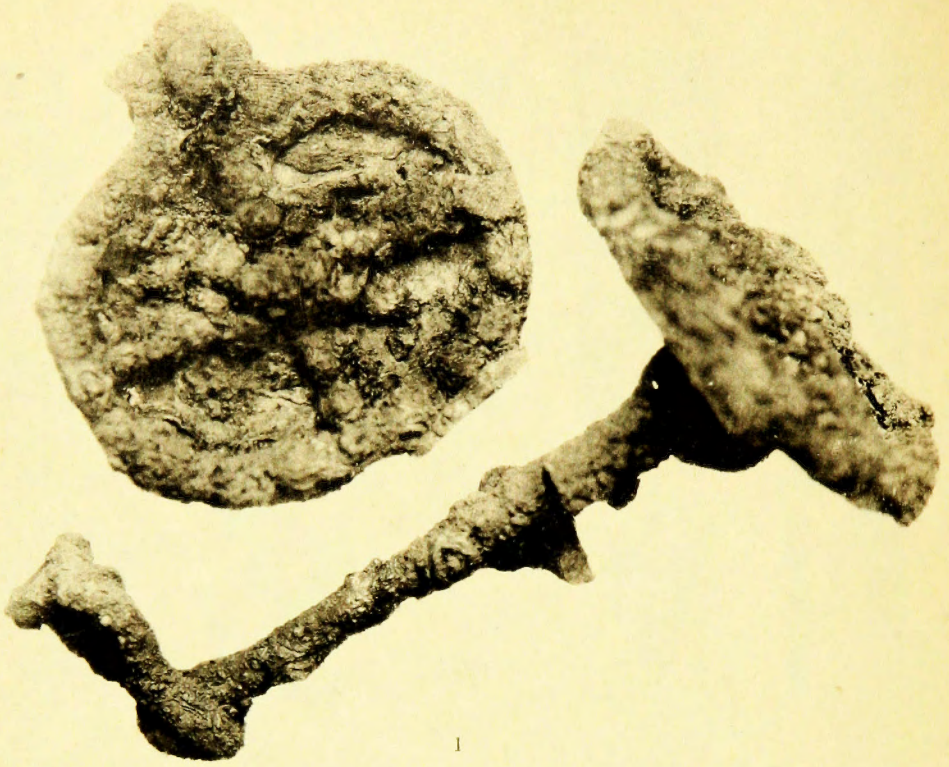
(11)



葉杏張銅金地鐵見發墳古山荷稻

圖版第二三

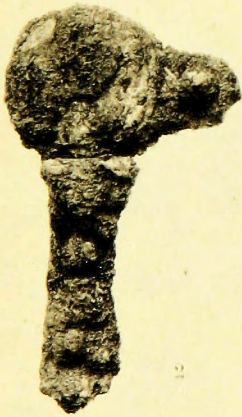
近江國水尾村鴨古墳



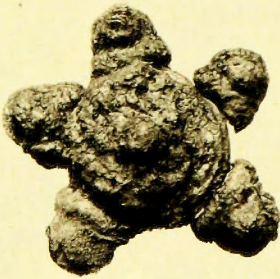
1

稻荷山古墳發見鐵地金銅張響(1)

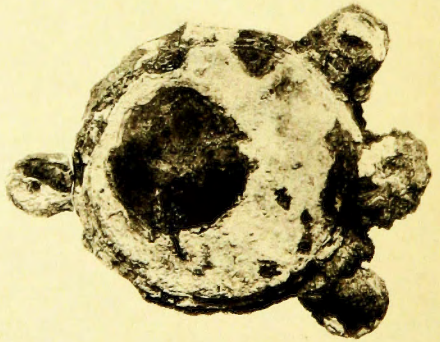
約 2/3



2

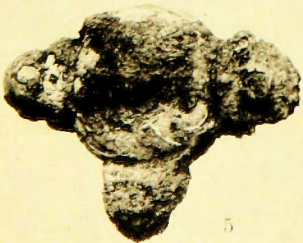


3

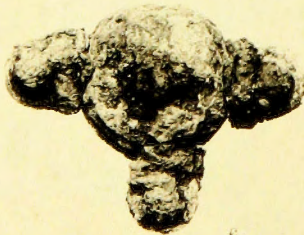


4

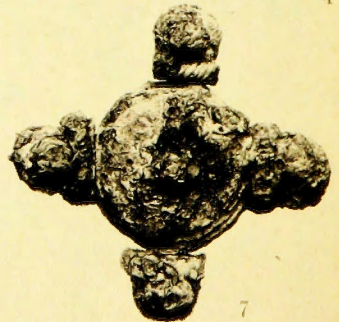
同上雲珠(2-7)



5

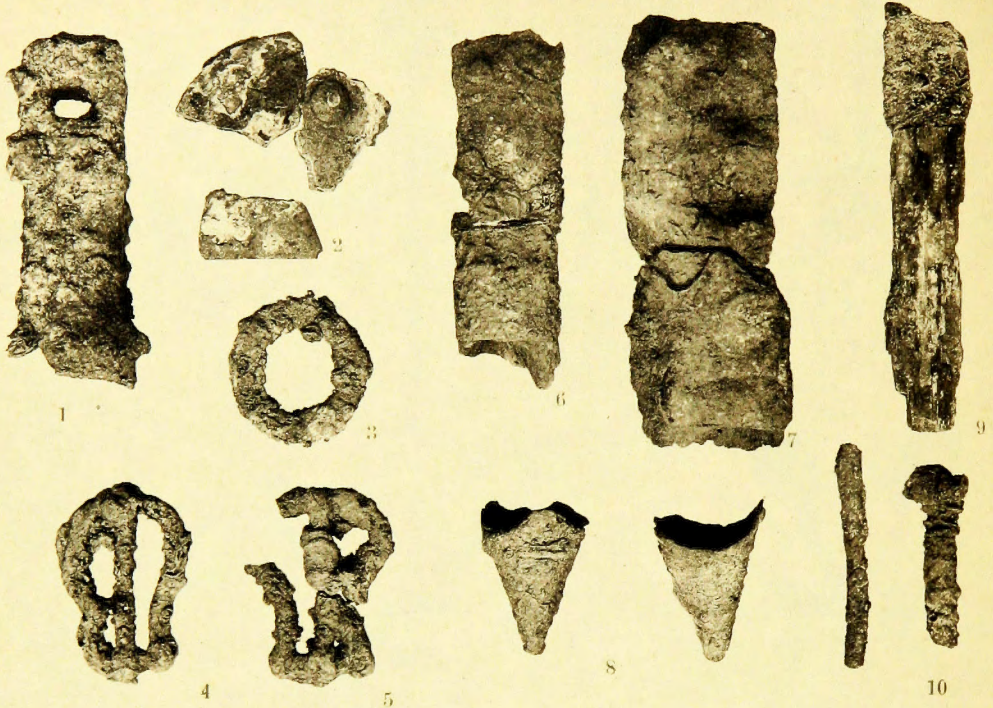


6



7

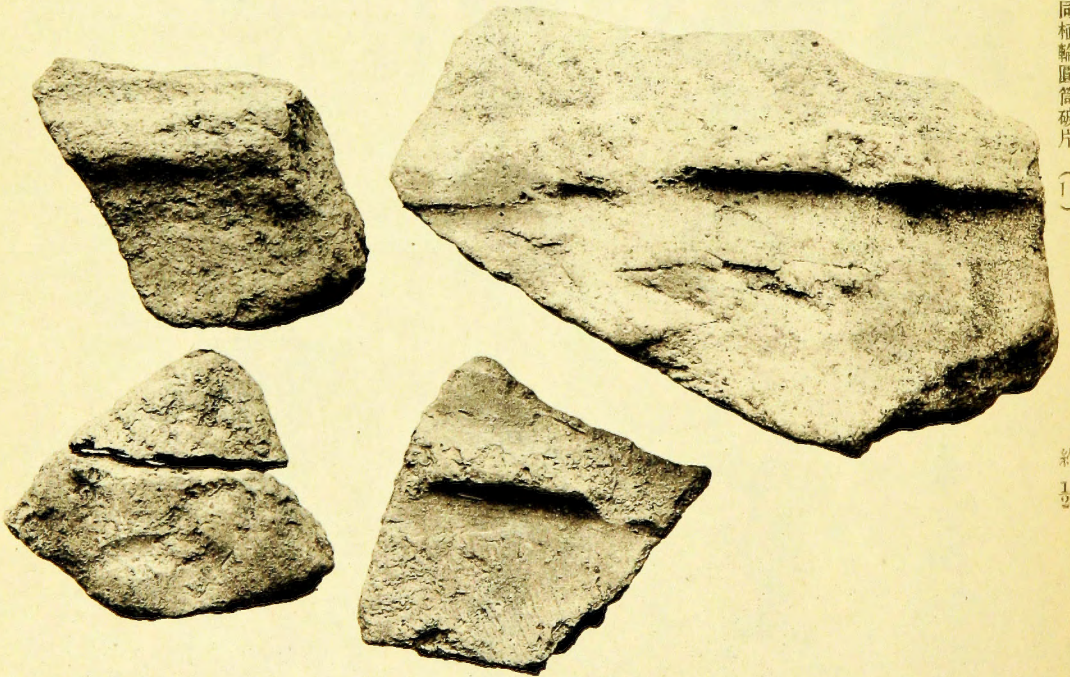
約 1/2



刀短 (9) 斧 (6,7) 具鉸 (4,5) 環 (3) 鐙 (1)

稻荷山古墳發見鐵製各種遺物 (1-10)

約 1/2



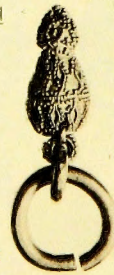
11

同種輪圓筒破片 (11)

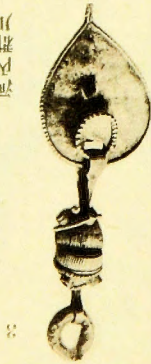
約 1/2



1 南



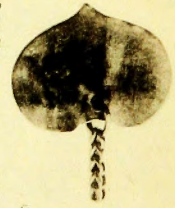
2 南



3 河內郡川



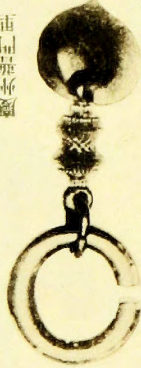
4 近江水尾



5



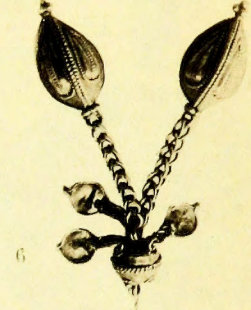
6 肥後江田



7 慶州並門里



8 慶州並門里



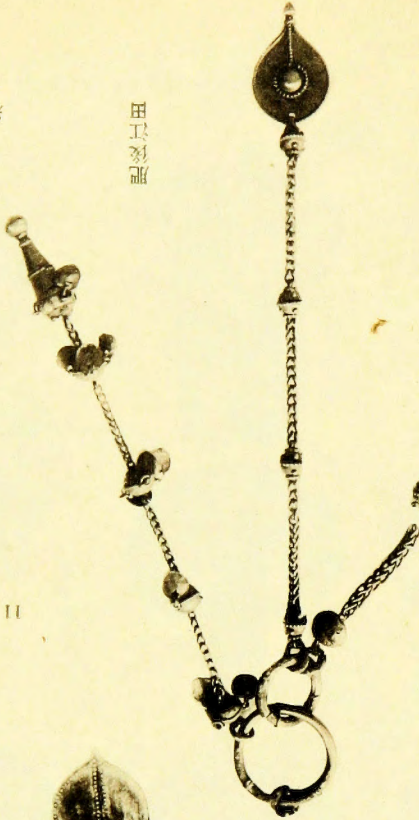
9

伊予保子串



10

肥前王手串

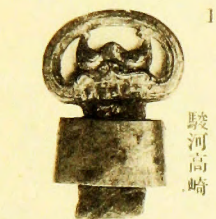


11

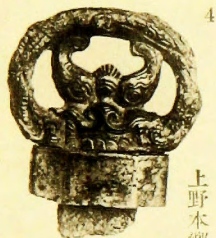
肥後江田

新

附錄圖版第二 日本發見刀劍環頭



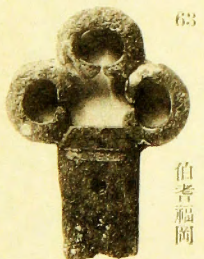
1 駿河高崎



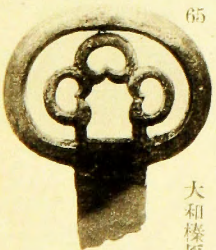
4 上野本郷



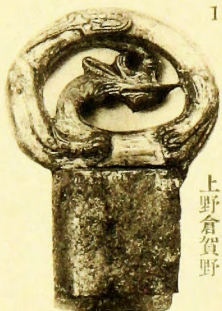
53 南鮮昌寧



63 伯耆福岡



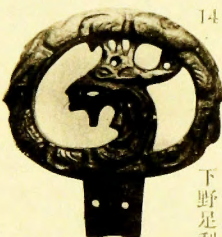
65 大和榛原



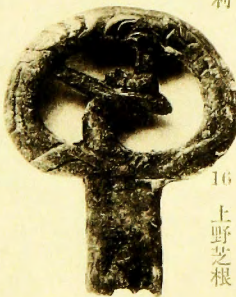
11 上野倉賀野



13 下總猿島



14 下野足利



16 上野芝根



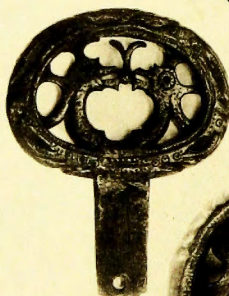
17 磐城高久



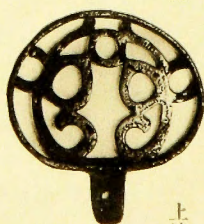
31 南鮮昌寧



34 筑前雷山



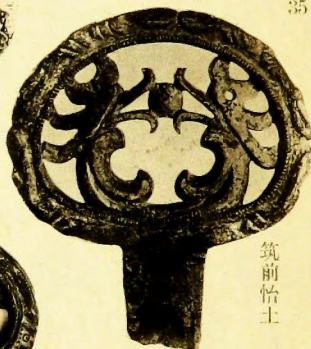
37 上野



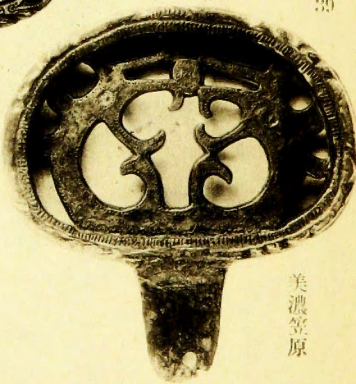
43 上總飯野



31 上野群馬郡

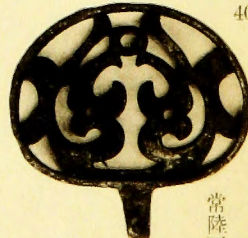


35

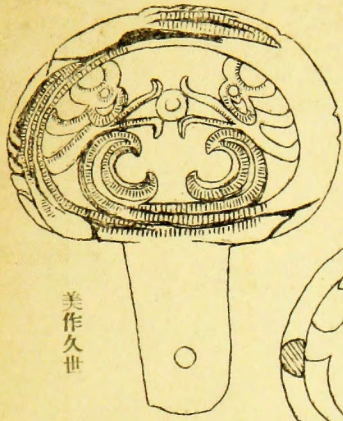


39

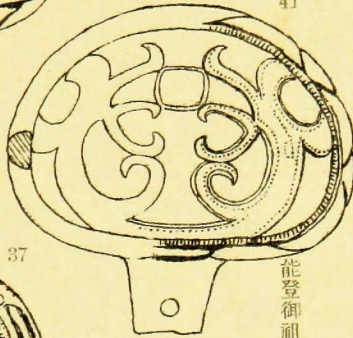
美濃笠原



40 常陸栗又

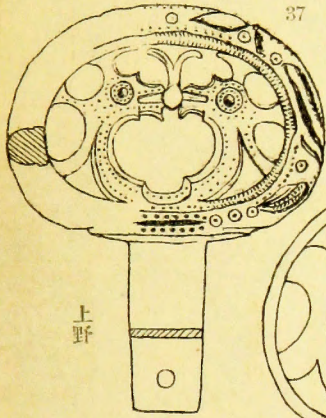


美作久世



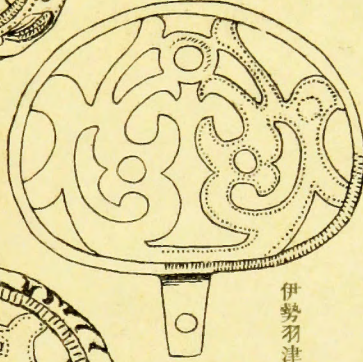
41

能登御祖



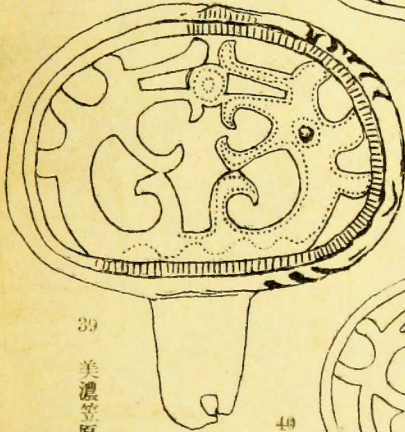
37

上野



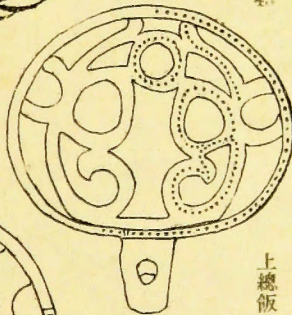
42

伊勢羽津



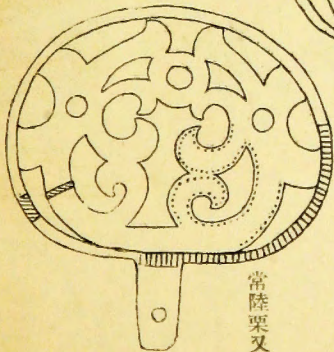
39

美濃笠原

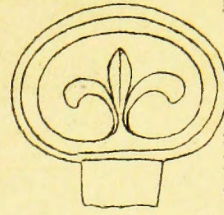


43

上總飯野

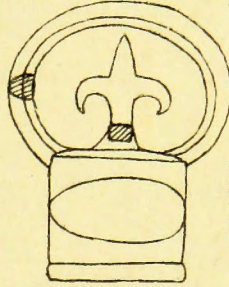


常陸栗又



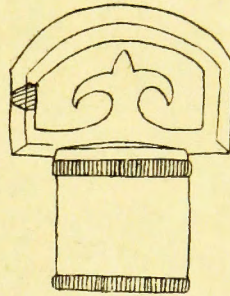
51

出雲大庭



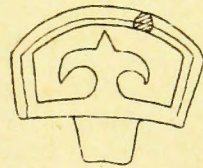
52

南鮮羅州



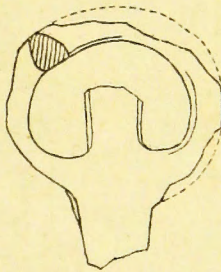
53

南鮮昌寧



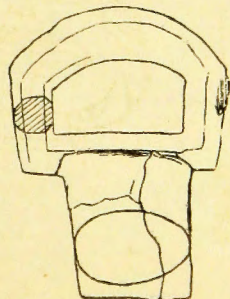
54

伊豫妻鳥



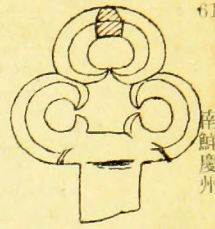
55

紀伊藤田



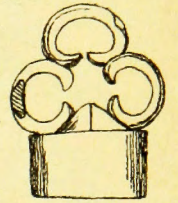
56

備前西須惠



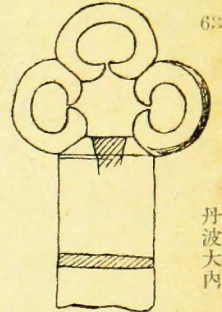
61

南鮮慶州



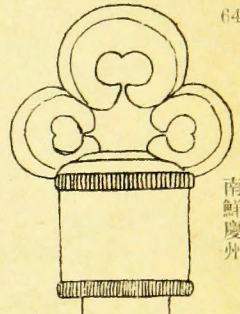
62

伯耆岡成



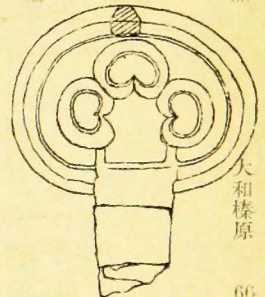
63

丹波大内



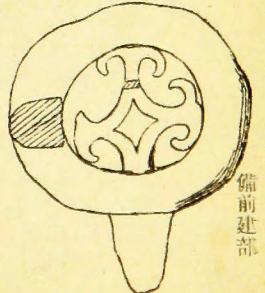
64

南鮮慶州



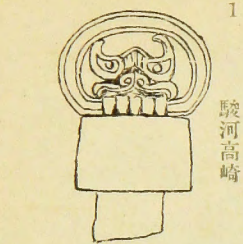
65

大和榛原



66

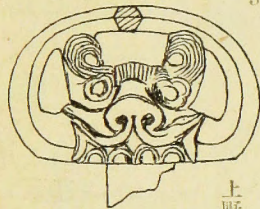
備前建部



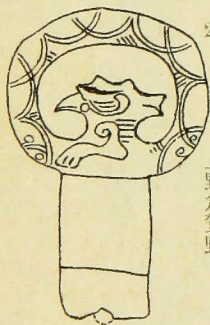
駿河高崎



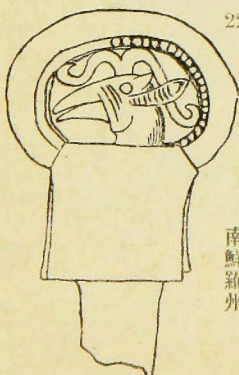
肥前鏡



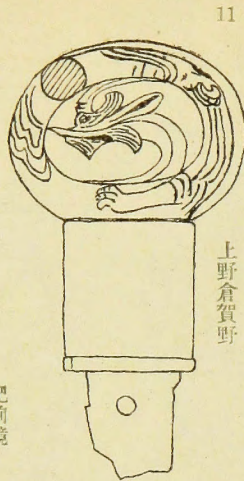
上野里見



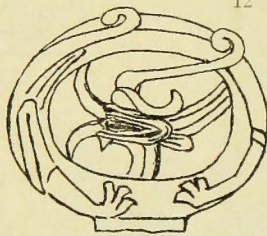
上野倉賀野



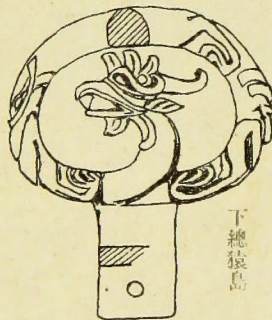
南鮮羅州



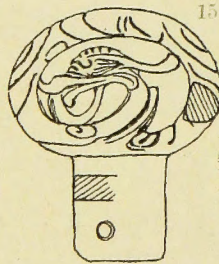
上野倉賀野



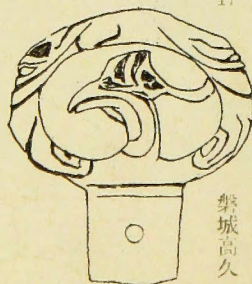
常陸田波



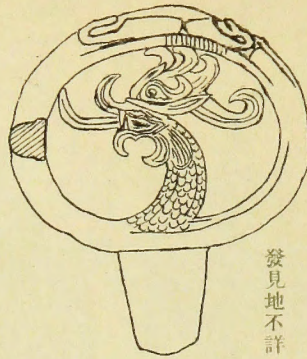
下總猿島



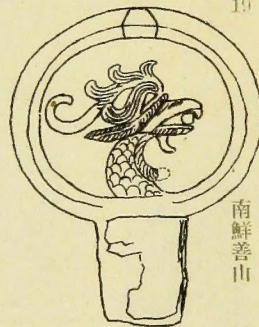
伊勢川口



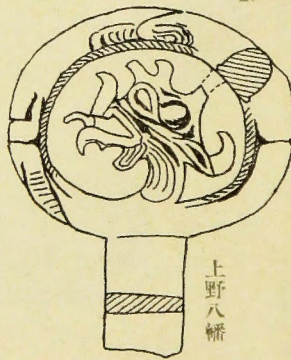
樂城高久



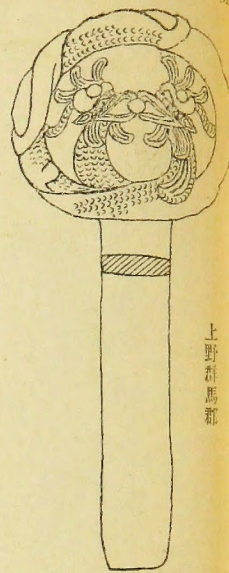
發見地不詳



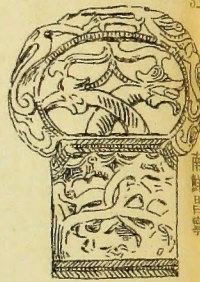
南鮮善山



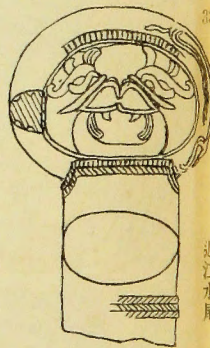
上野八幡



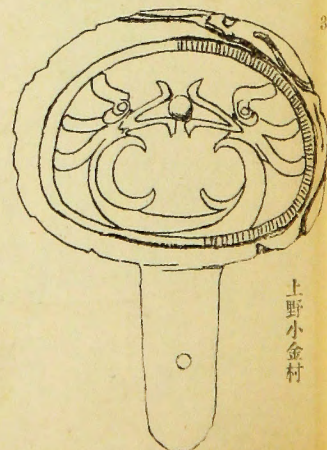
上野郡馬郡



南鮮昌寧



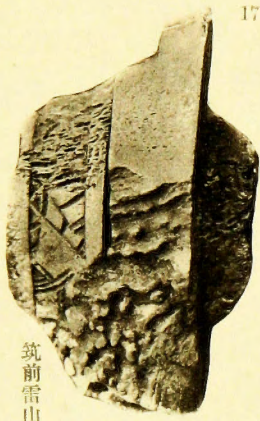
近江水尾



上野小金村

附錄圖版第四

日本發見刀劍鹿角裝具



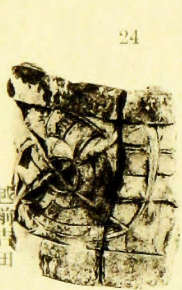
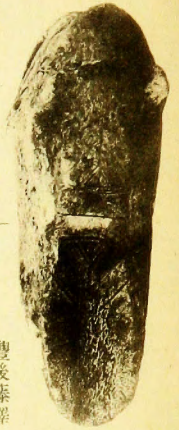
筑前雷山



越前吉田



豐後藤澤



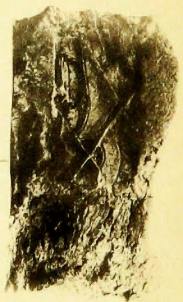
越前吉田



越前吉田



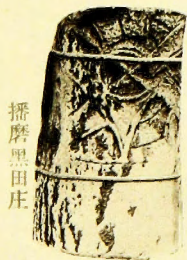
南鮮咸安



近江水尾



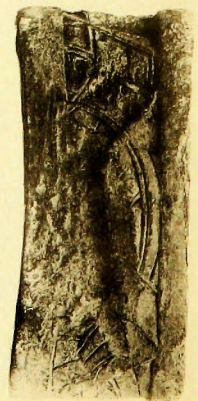
筑前雷山



播磨黒田庄



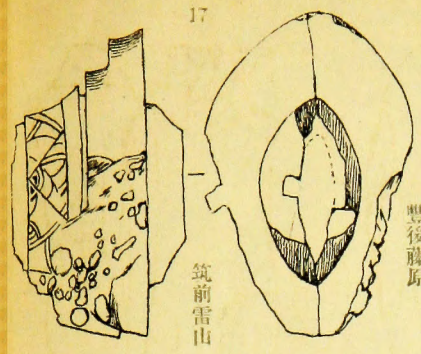
讃岐羽床



越前社村

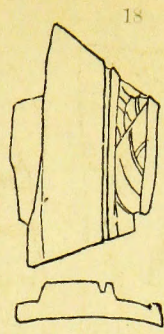
17

筑前雷山



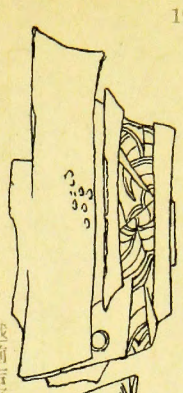
18

豊後藤原



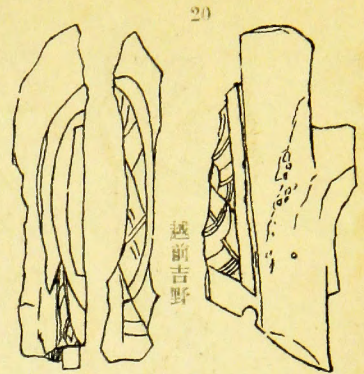
19

越前吉野

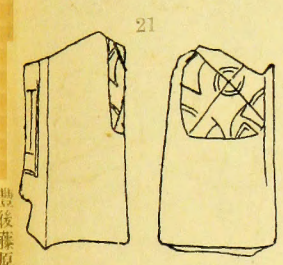


20

越前吉野

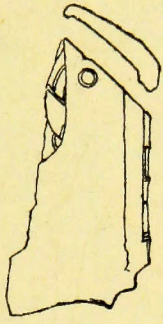


21



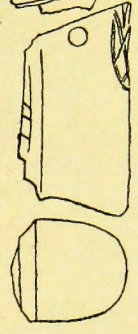
22

越前吉野



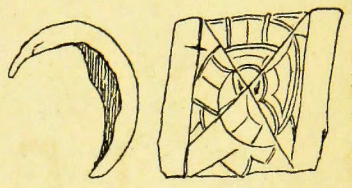
23

越前吉野



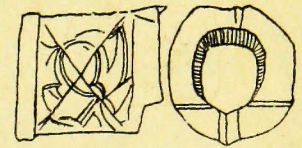
24

越前吉野



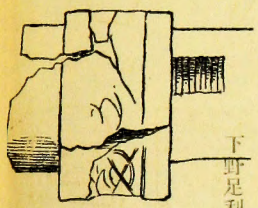
25

播磨黒田庄



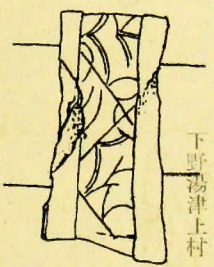
12

下野足利



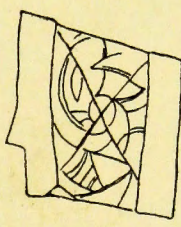
13

下野湯津上村



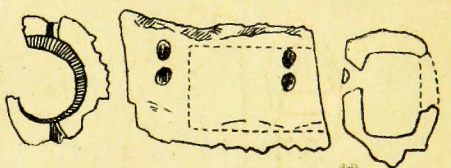
14

豊後藤原



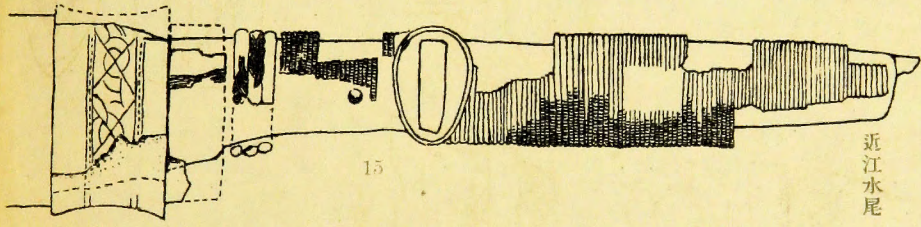
26

越前吉野



15

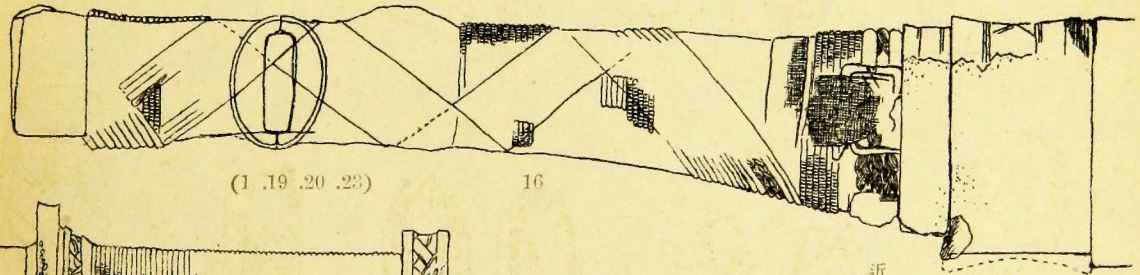
近江水尾



(1 .19 .20 .23)

16

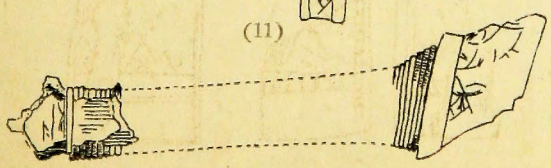
近江水尾



(11)

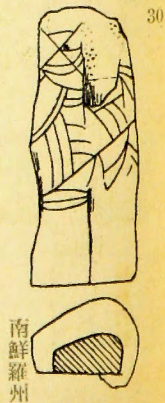
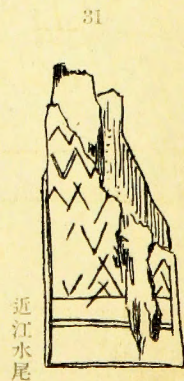
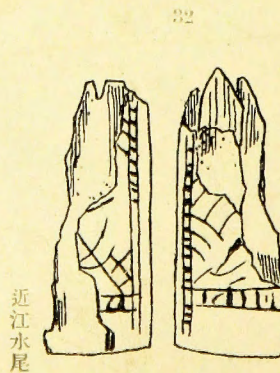
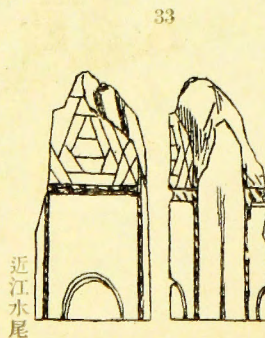
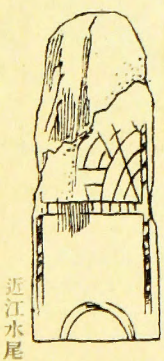
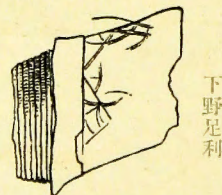
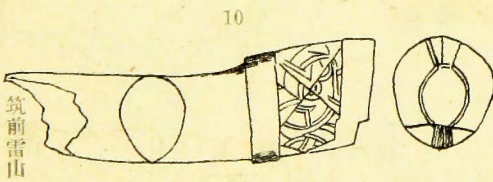
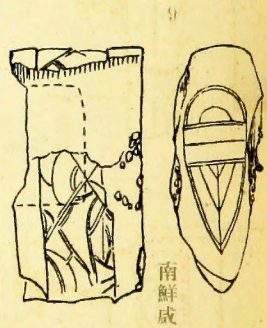
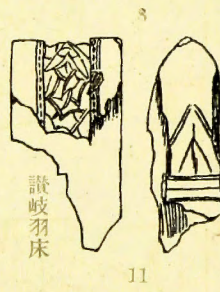
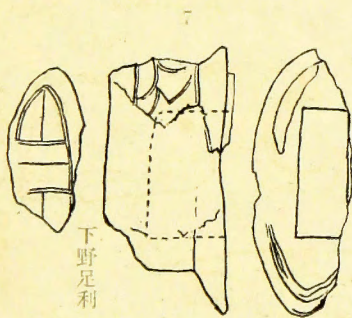
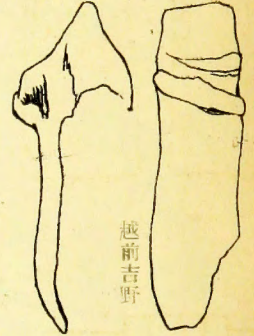
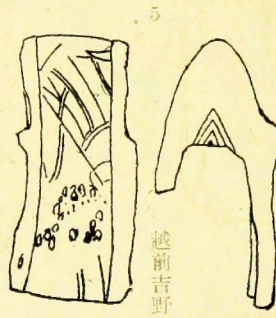
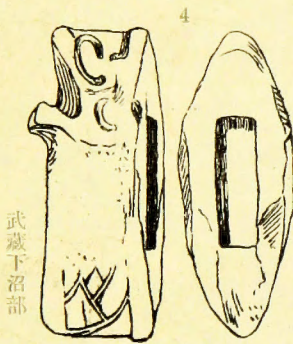
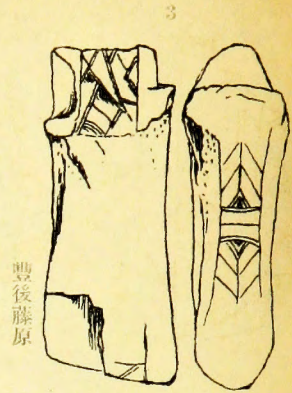
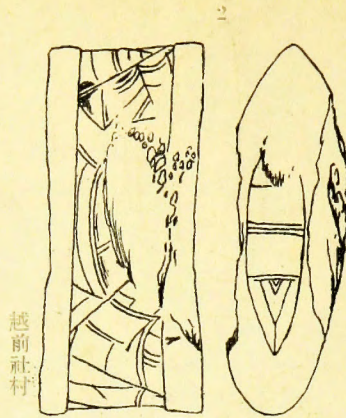
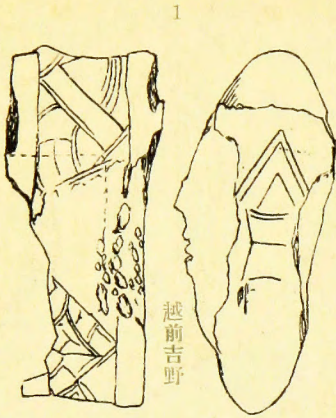
越前吉野

下野足利



附錄圖版第五

日本發見刀劍鹿角裝具聚成



卷末地圖

近江國高島郡水尾村古墳所在地附近地圖

