

Frontice Piece; Ornamentation of the Front-Chamber



Frontice Piece; Ornamentation of the Front-Chamber



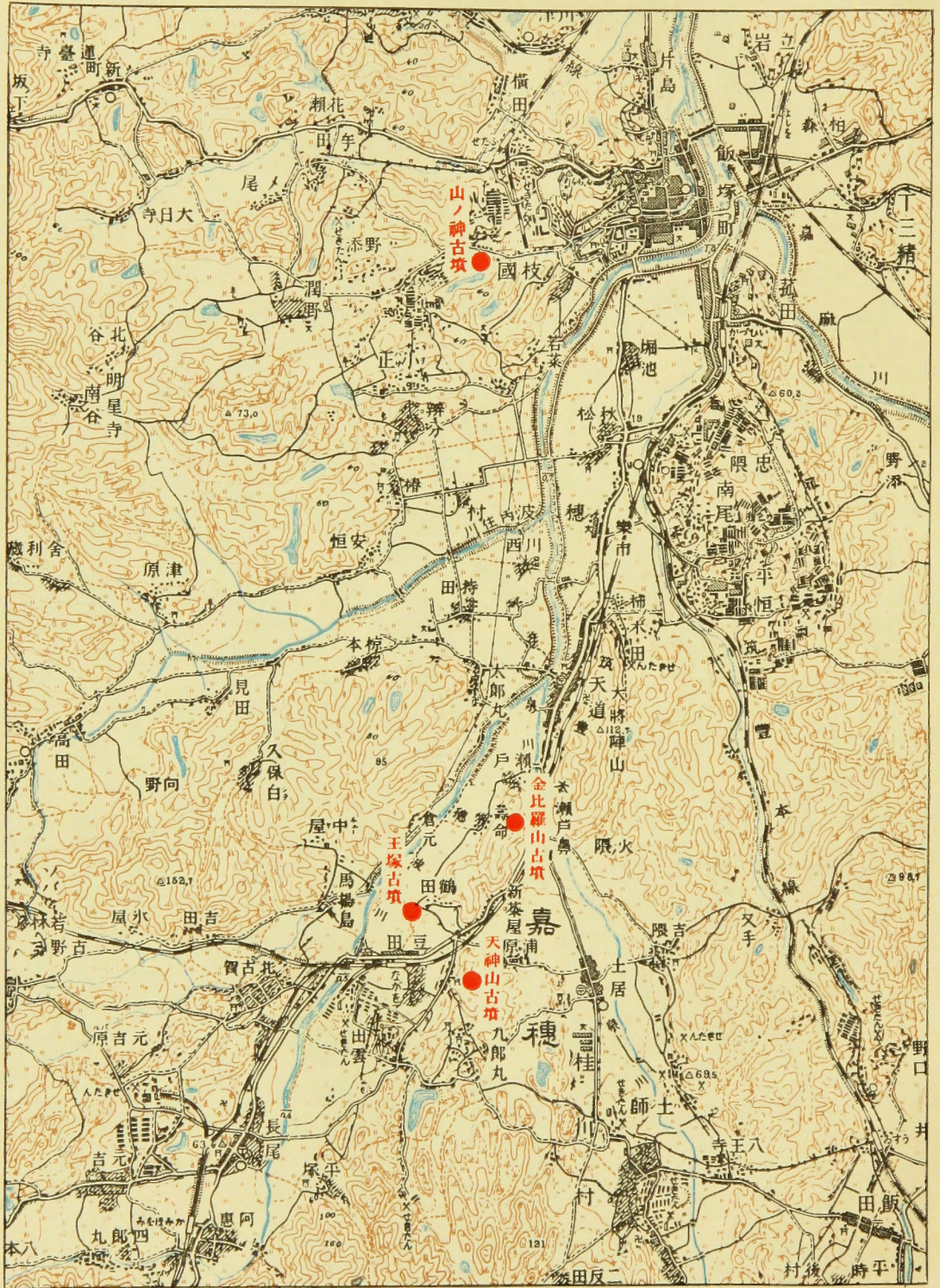
圖

版

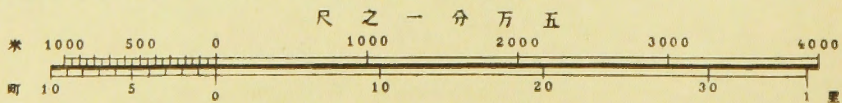
PLATES

PL. I. Topographical Map of the Otsuka and its Vicinity

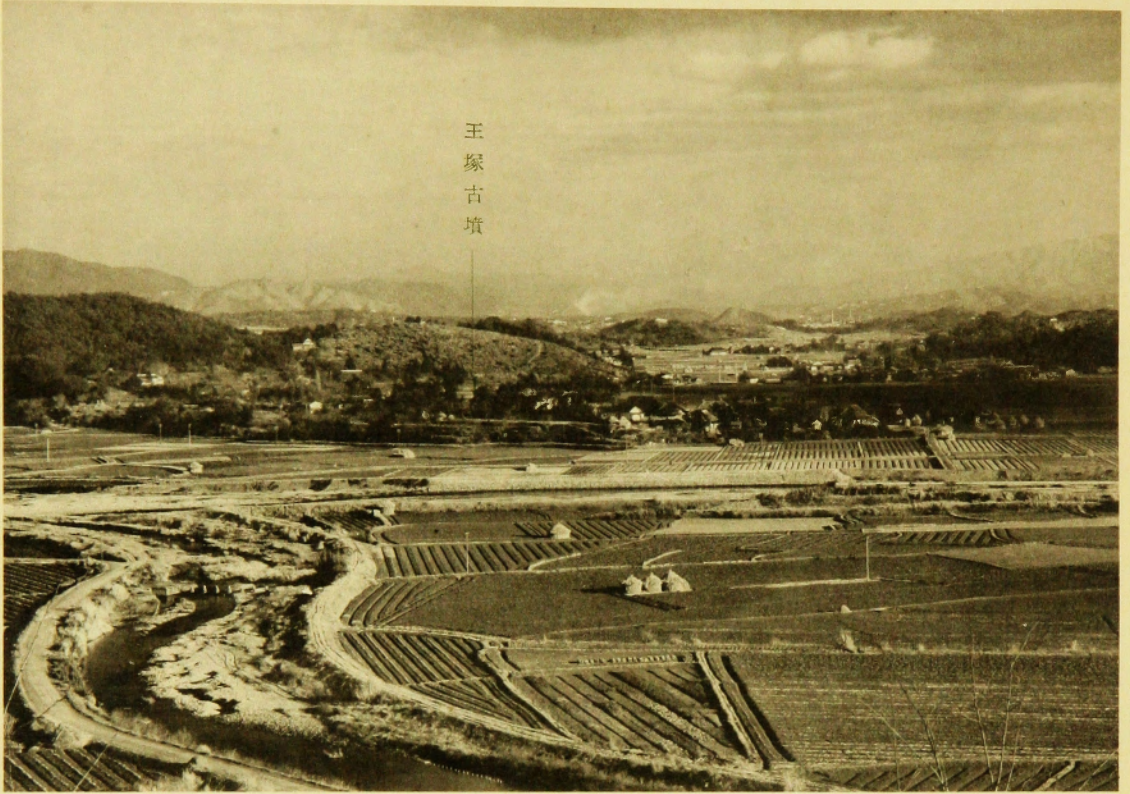
筑前嘉穂郡地方地形圖



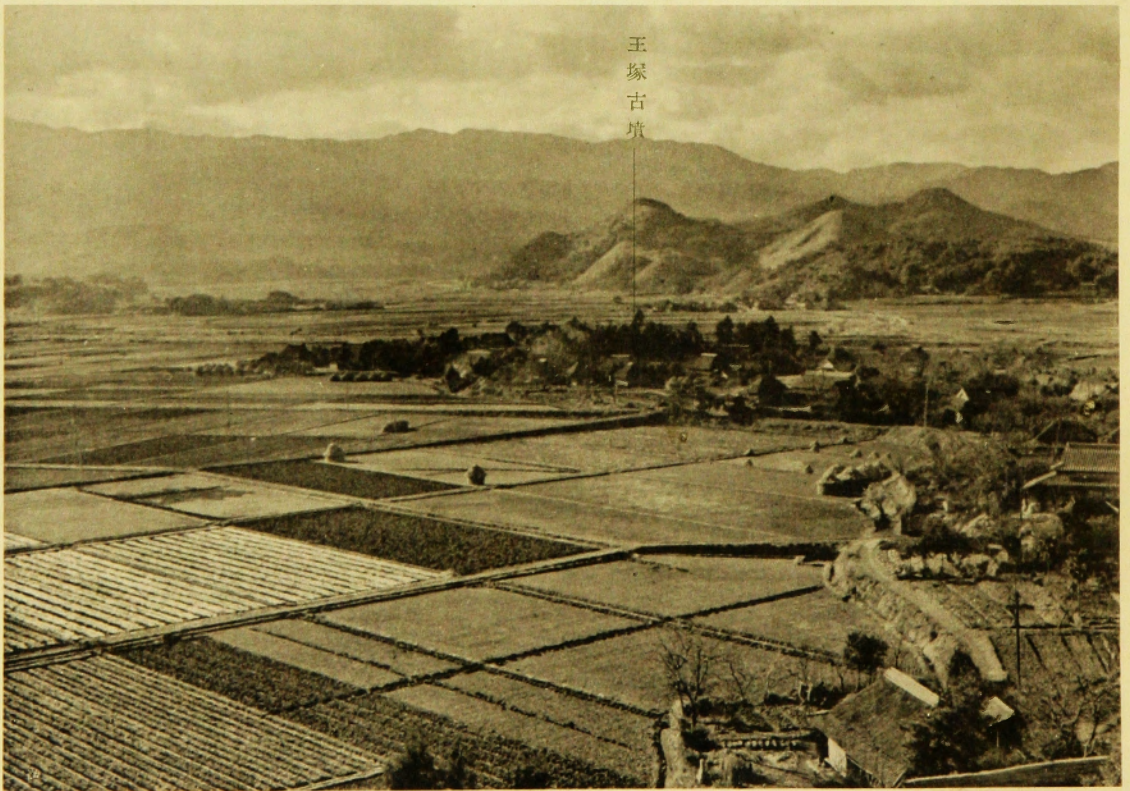
陸地測量部五萬分一地形圖「大宰府」圖幅分載



PL. II. Tomb ; Two Bird's-eye-Views of the Ôtsuka-Tomb and its Vicinity

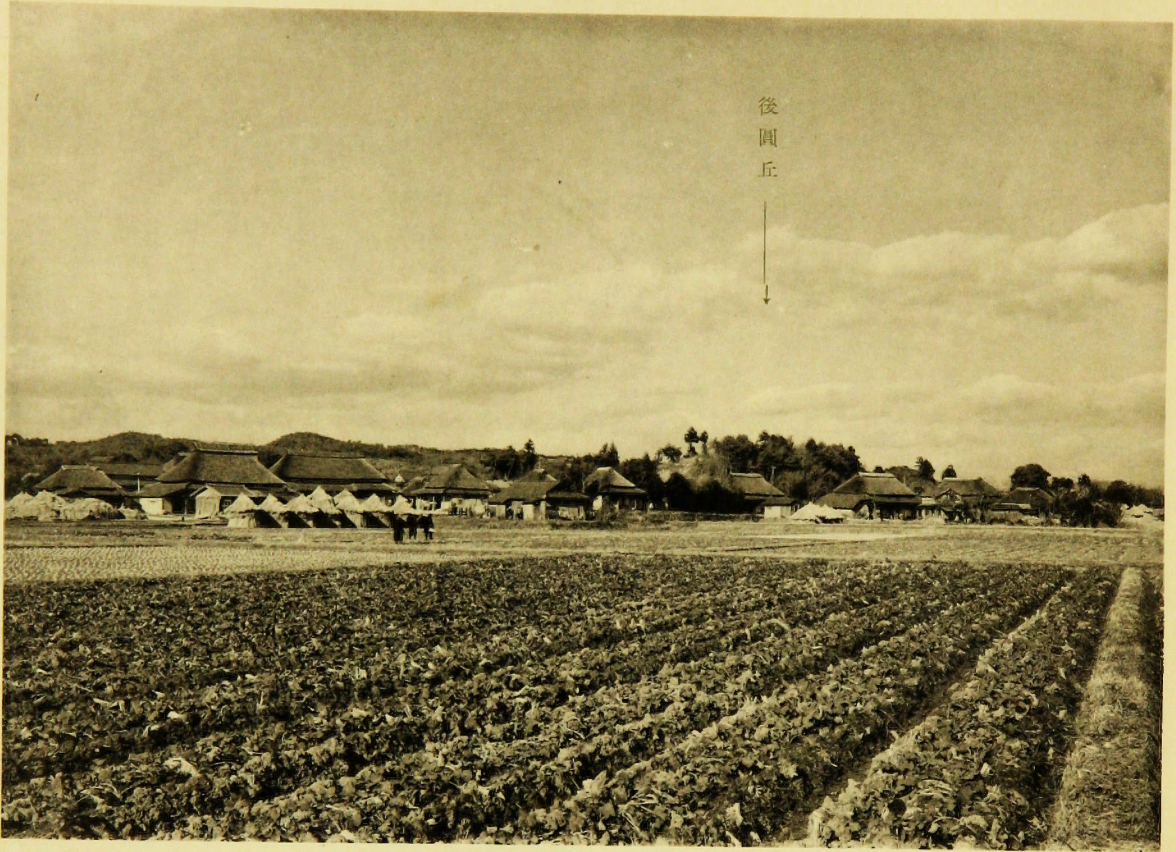


(一) 西方の山丘腹より遠望した王塚古墳所在地



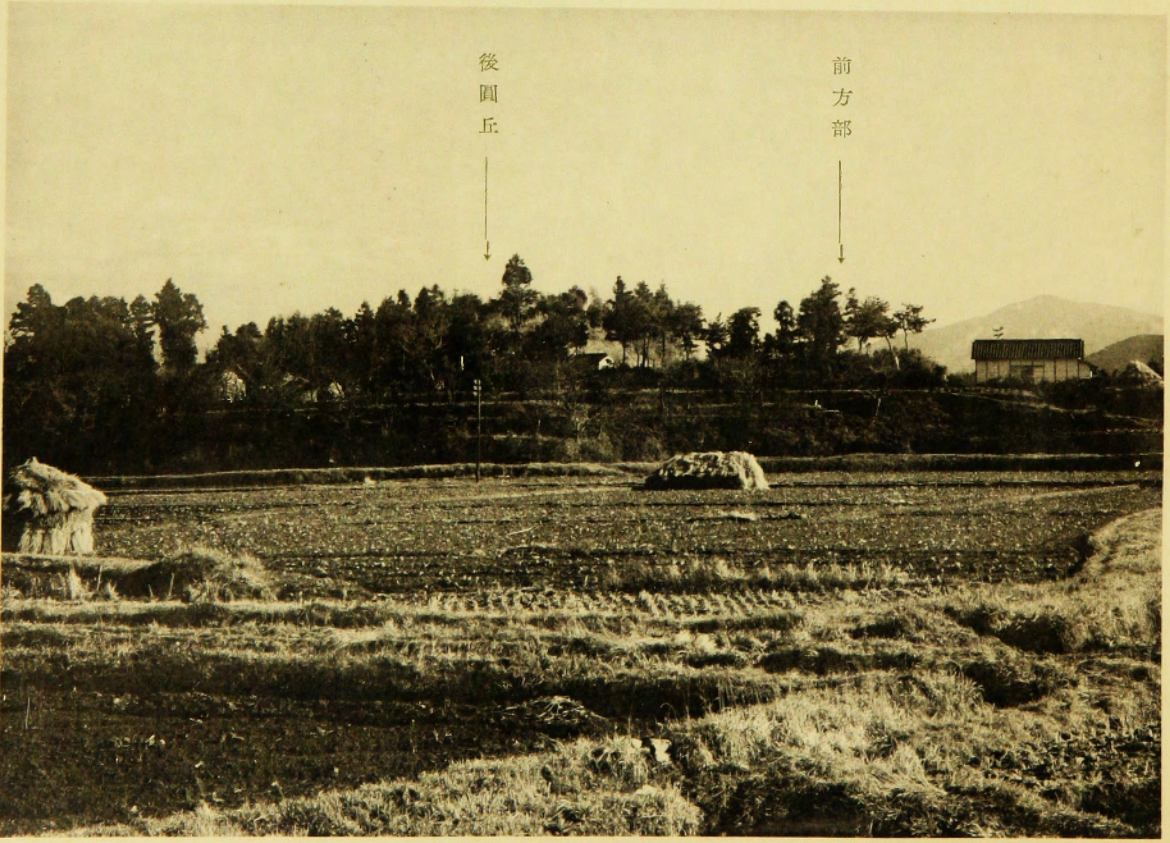
(二) 東方山丘上より俯瞰した王塚古墳所在地

PL. III. Tomb; Two Views of the Mound



(一) 南東より人家を隔て、古墳を望む

後圓丘



(二) 北方よりの封土近景

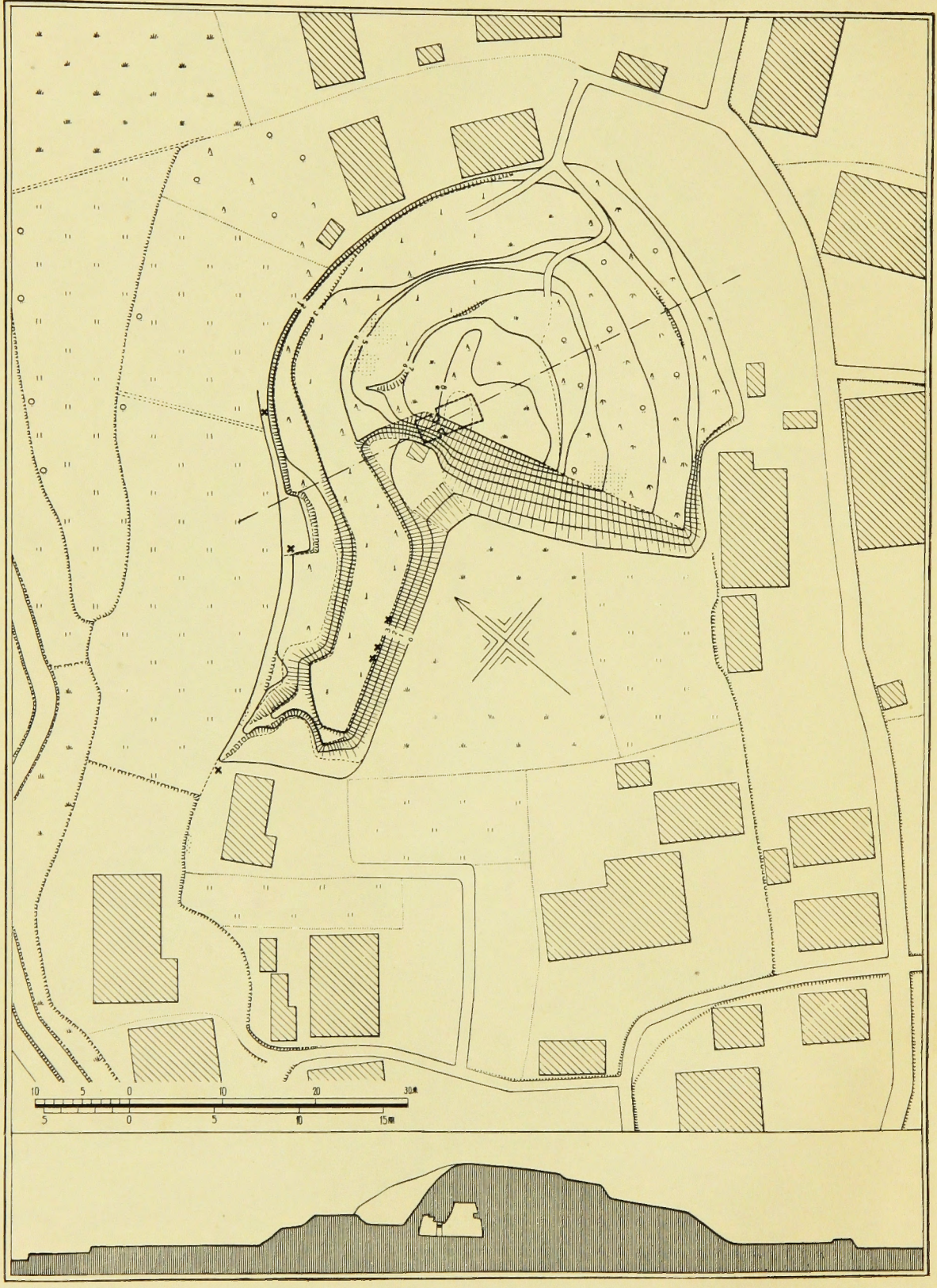
後圓丘



前方部



PL. IV. Tomb; Plan and Section of the Mound



王塚古墳外形現狀實測圖

(梅原・小林・樺島實測、小林製圖)

PL. V. Tomb; Mound viewed from South-West.



前面(南西)より見た王塚古墳残存の封土

PL. VI. Tomb; Two Views of the Mound



(一)
後圓丘の切斷面

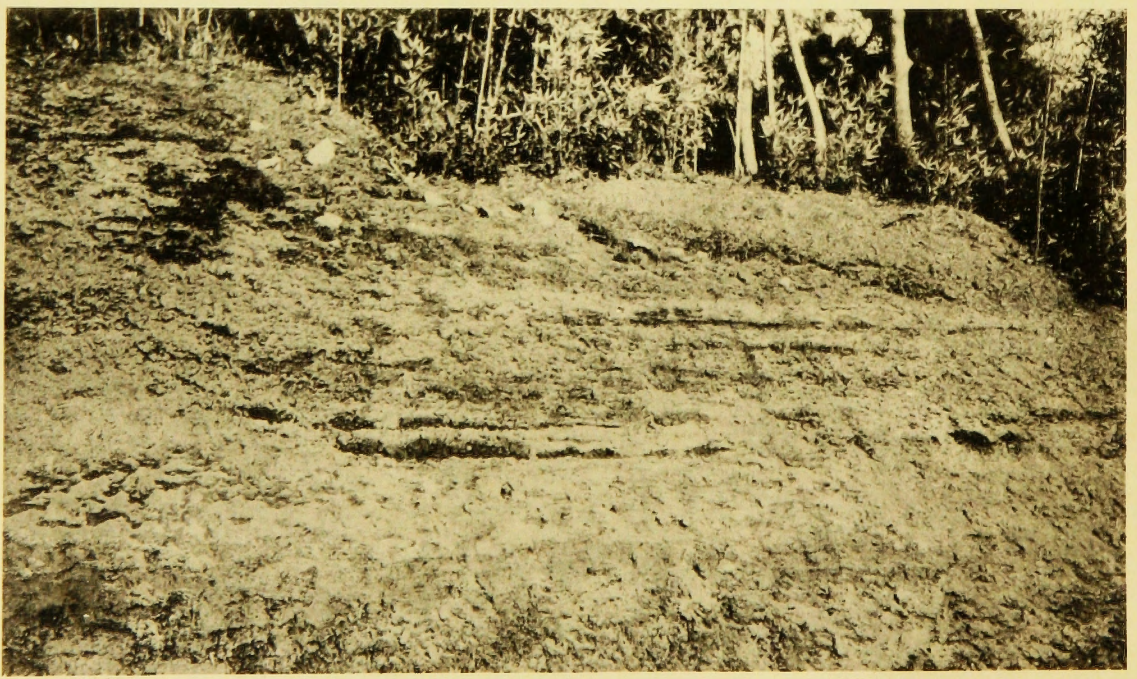


(二)
後圓部封土築成狀況

PL. VII. Tomb; Two Views of the Mound



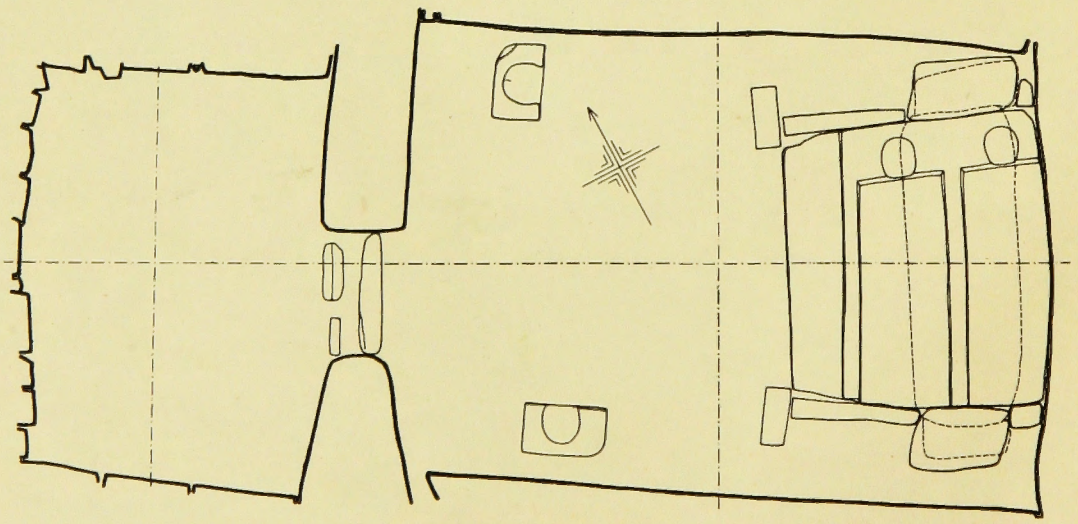
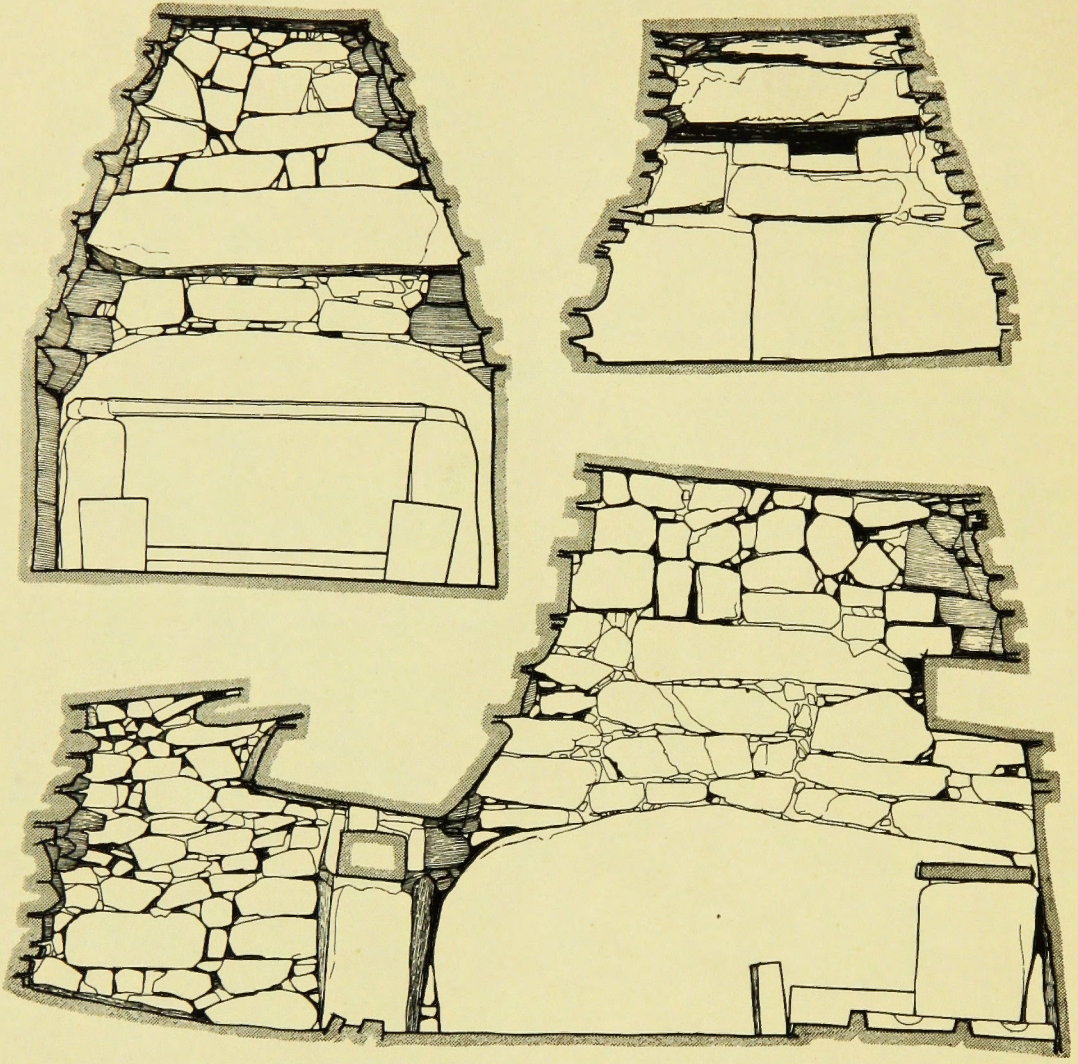
(一)
後圓丘北邊第二段の葺石



(二)
後圓丘切斷面南半の景觀

PL. VIII. Stone-Chambers; Plan and Sections

王塚古墳石室實測圖



(小林・梅原實測、小林製圖)



王塚古墳石室裝飾模寫圖——西南壁面

(小林機覺圖)

PL. X. Stone-Chambers; Ornamentation



王塚古墳石室裝飾模寫圖——東北壁面 (小林機寫圖)

PL. XI. Stone-Chambers ; Ornamentation



王塚古墳石室裝飾模寫圖

(上) 前室正面



(下) 主室奧壁面

(小林模寫圖)

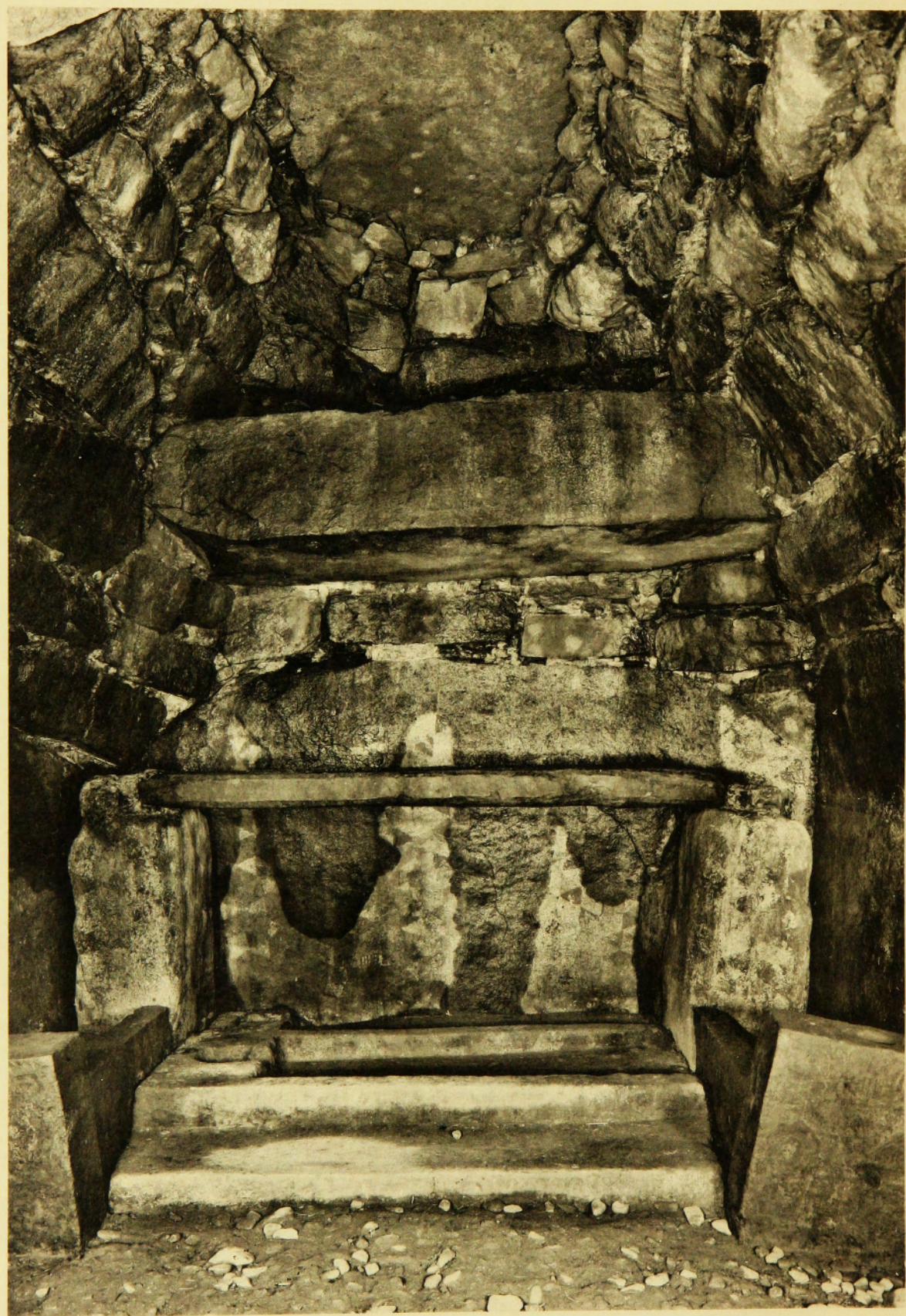
PL. XII. Stone-Chambers ; Ornamentation



王塚古墳石室裝飾模寫圖——主室前壁面

(小林模寫圖)

PL. XIII. Stone-Chambers ; Interior of the Main-Chamber

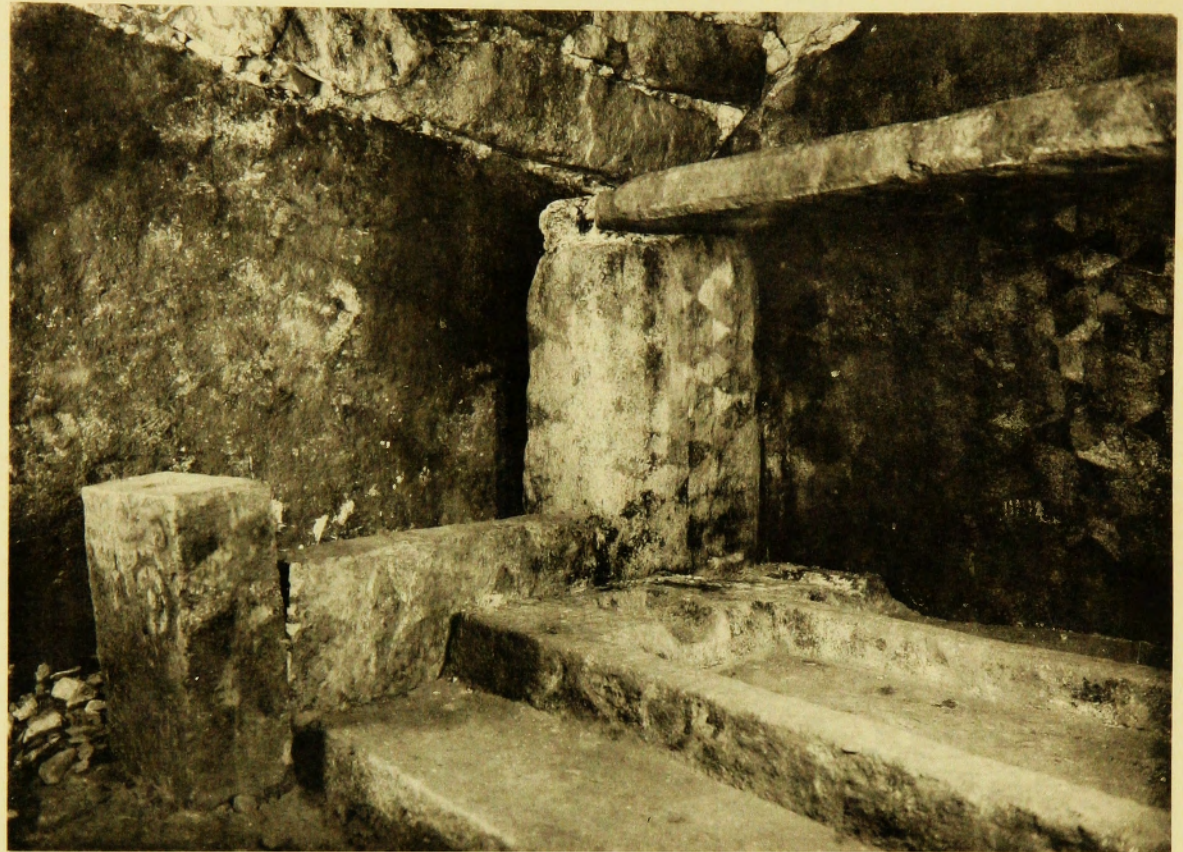


PL. XIV. Stone-Chambers; Cist-like Construction and the Stone-Beds

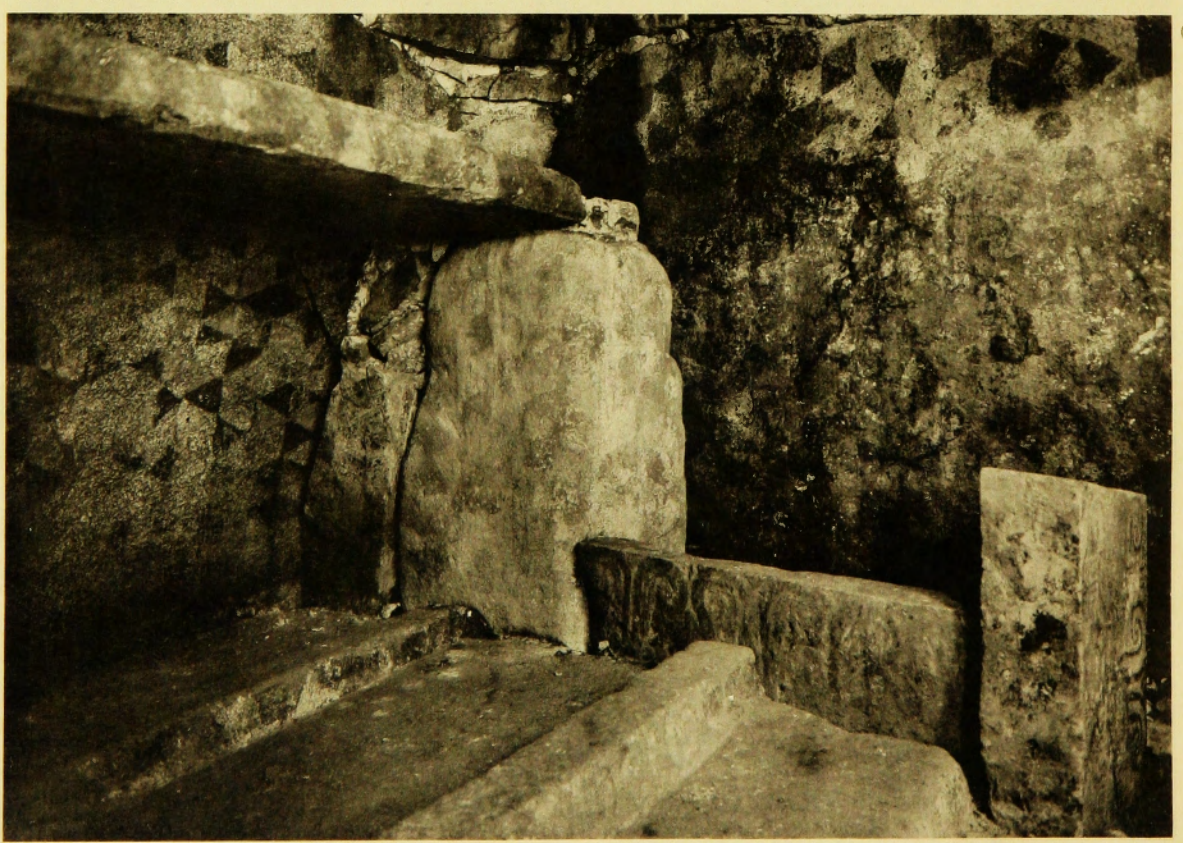


主室與石屋形及棺床正面觀

PL. XV. Stone-Chambers; Stone-Peds in the Main-Chamber



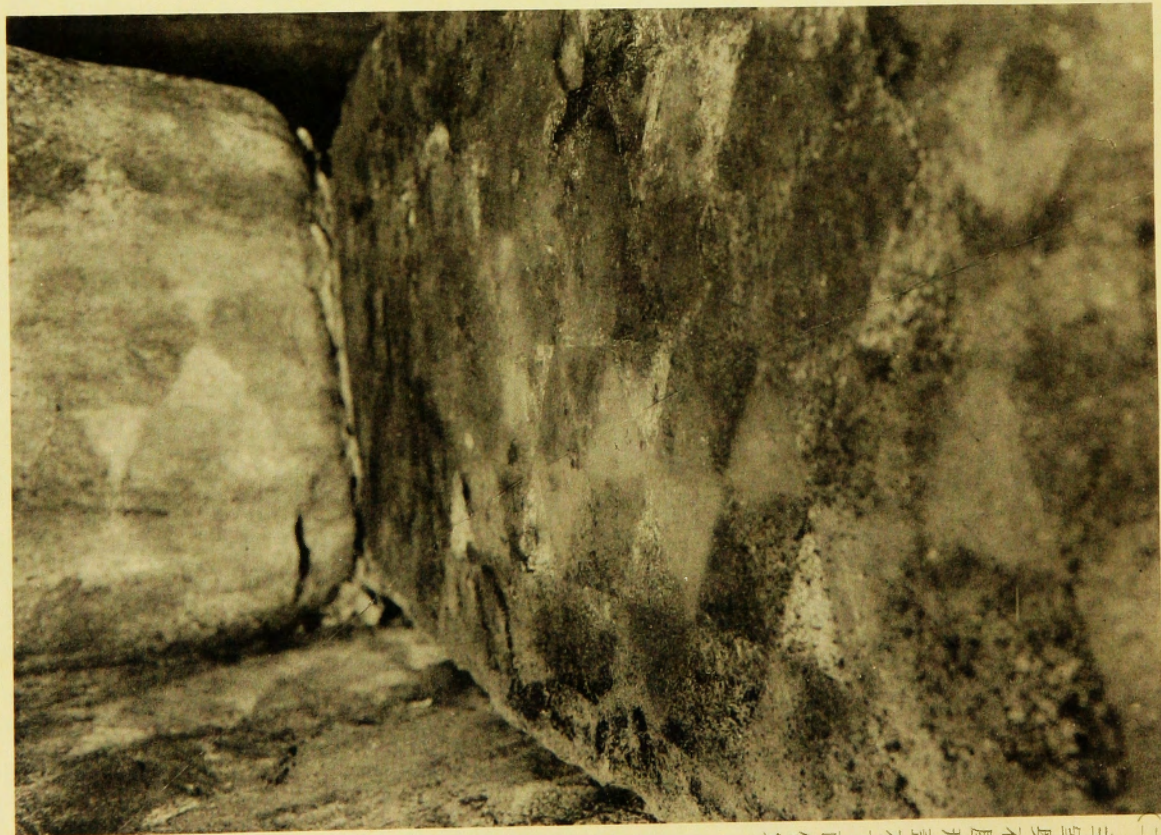
(一) 主室奧石屋形及棺床東北部細圖



(二) 同 上西南部細圖

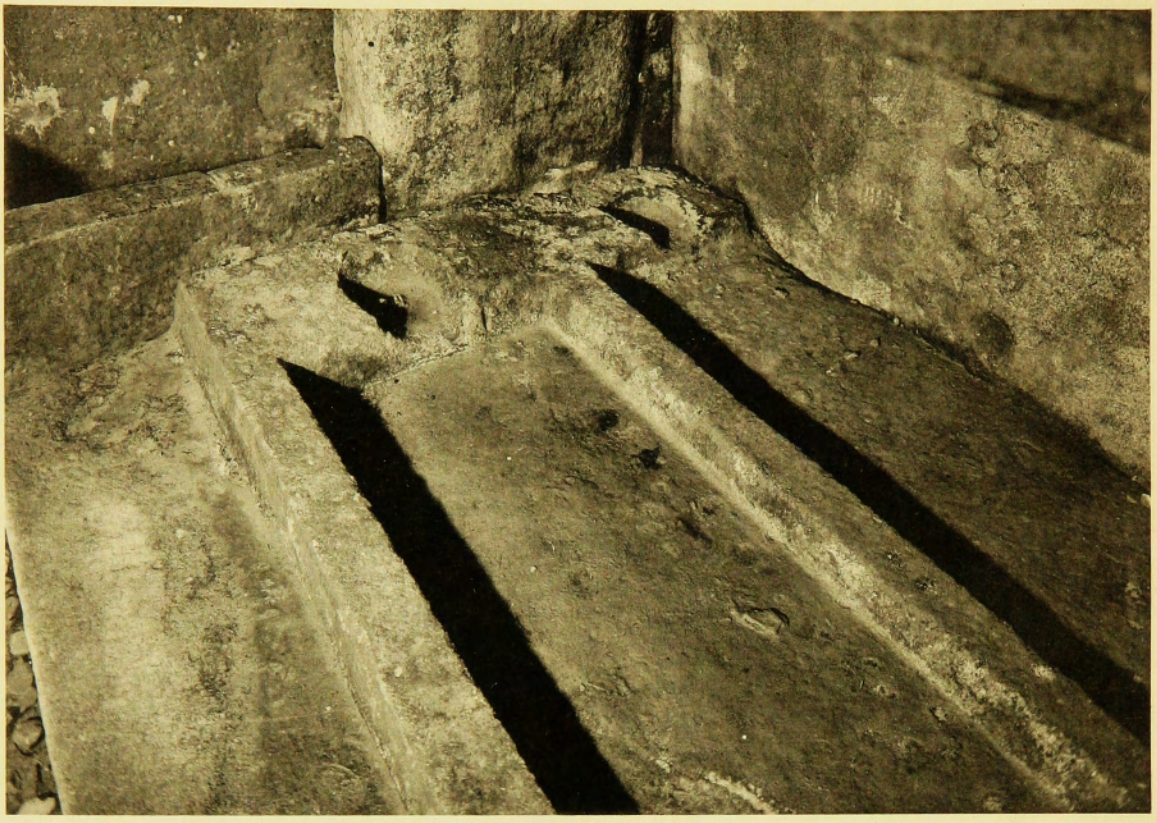


(一) 主室奥棺床の石枕



(二) 主室奥石屋形蓋石下面仰寫

PL. XVII. Stone-Chambers; Stone-Beds and Pillows



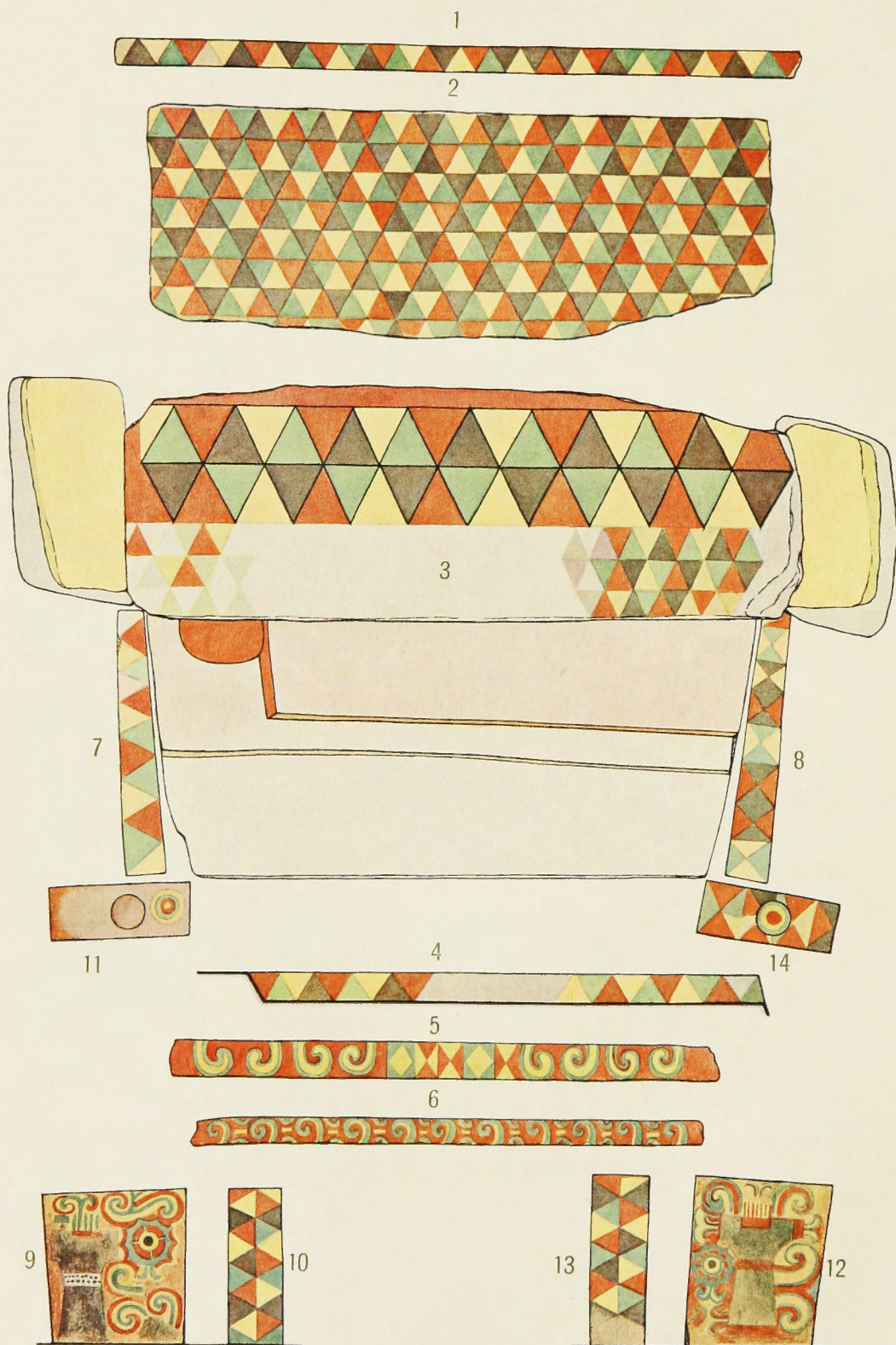
(一) 主室奥石屋形下の棺床



(二) 主室内に於ける二個の石枕

PL. XVIII. Stone-Chambers; Ornamentain of the Cist-like Construction &c.

主室奧石屋形及棺床裝飾模寫圖



(小林模寫圖)

PL. XIX. Stone-Chambers; Ornamentation of the Light-dish Stones



(二) 主室内燈明臺石(向つて左)の正面裝飾



(一) 主室内燈明臺石(向つて右)の正面裝飾

PL. XX. Stone-Chambers; Front Boulder Wall of the Main-Chamber



王塚古墳主室前壁觀

PL. XXI. Stone-Chambers; Front Boulder Wall of the Main-Chamber



王塚古墳主室西隅觀

PL. XXII. Stone-Chambers; Ornamentaion of the Main-Chamber

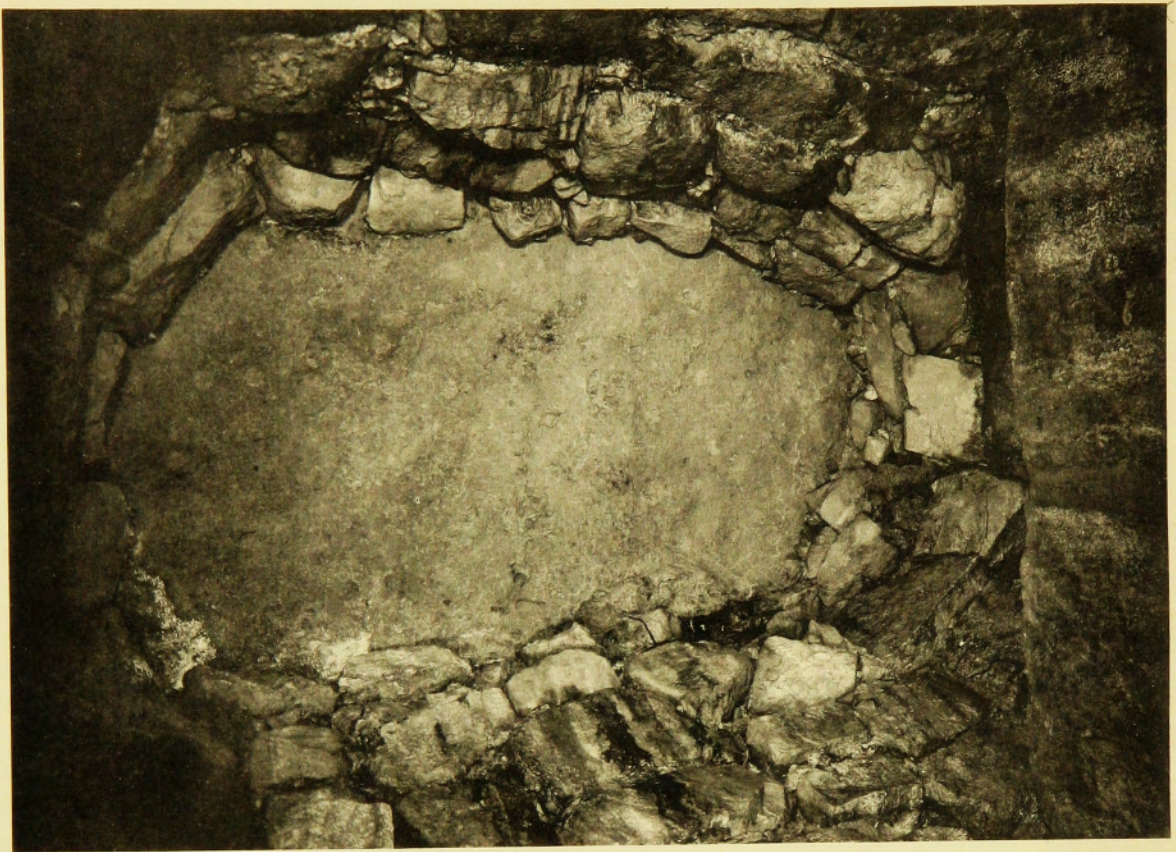


(一) 主室前壁下部北東半の裝飾

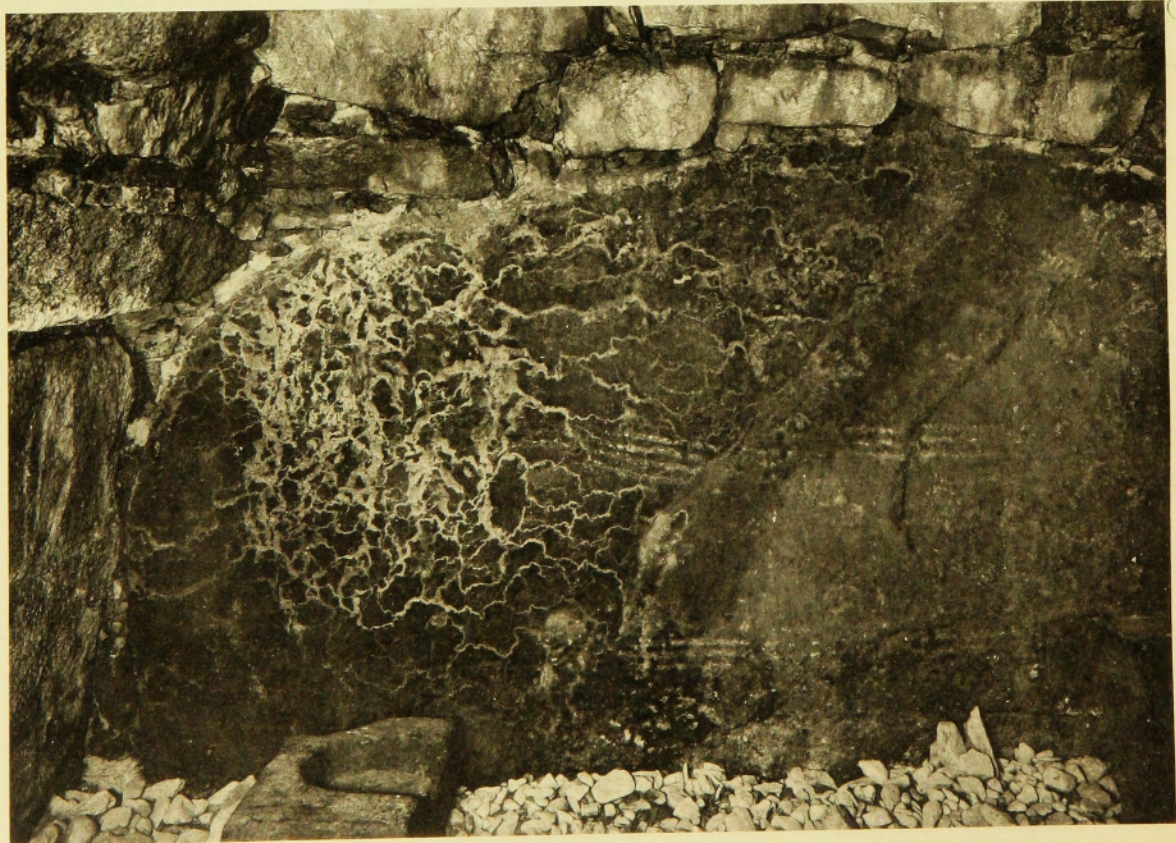


(二) 主室前壁下部南西半の裝飾

PL. XXIII. Stone-Chambers; Two Views of the Main-Chamber



(一) 主室天井見上げ寫眞 (向つて右が奥壁)



(二) 主室北隅下半觀

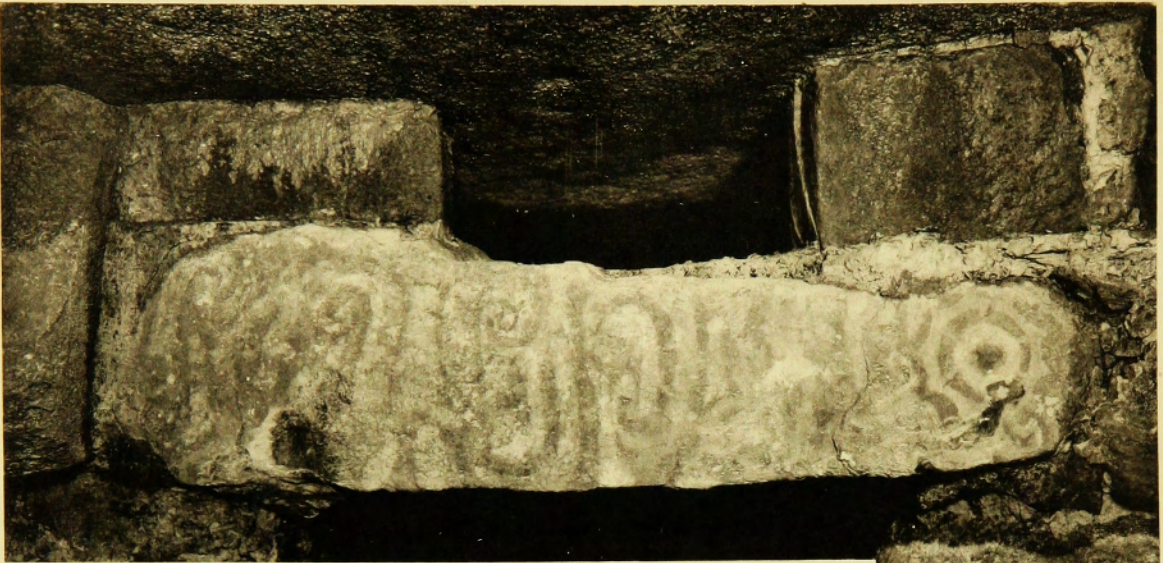


(一) 前室正面戸口右石に於ける裝飾



(二) 前室正面戸口左石の裝飾

PL. XXV. Stone-Chambers; Two Views of the Front-Chamber



(上) 前室正面戸口上の楣石
(下) 前室前面閉塞状態

PL. XXVI. Remains; *Iwaibe* and *Haji* Pottery Vases



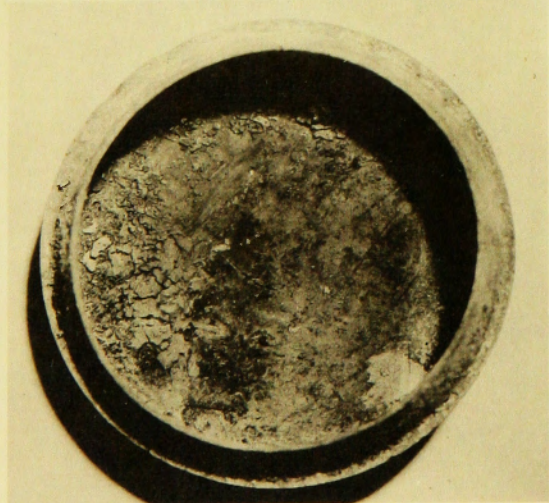
(一) 土師器杯及蓋杯



(二) 祝部杯及蓋杯

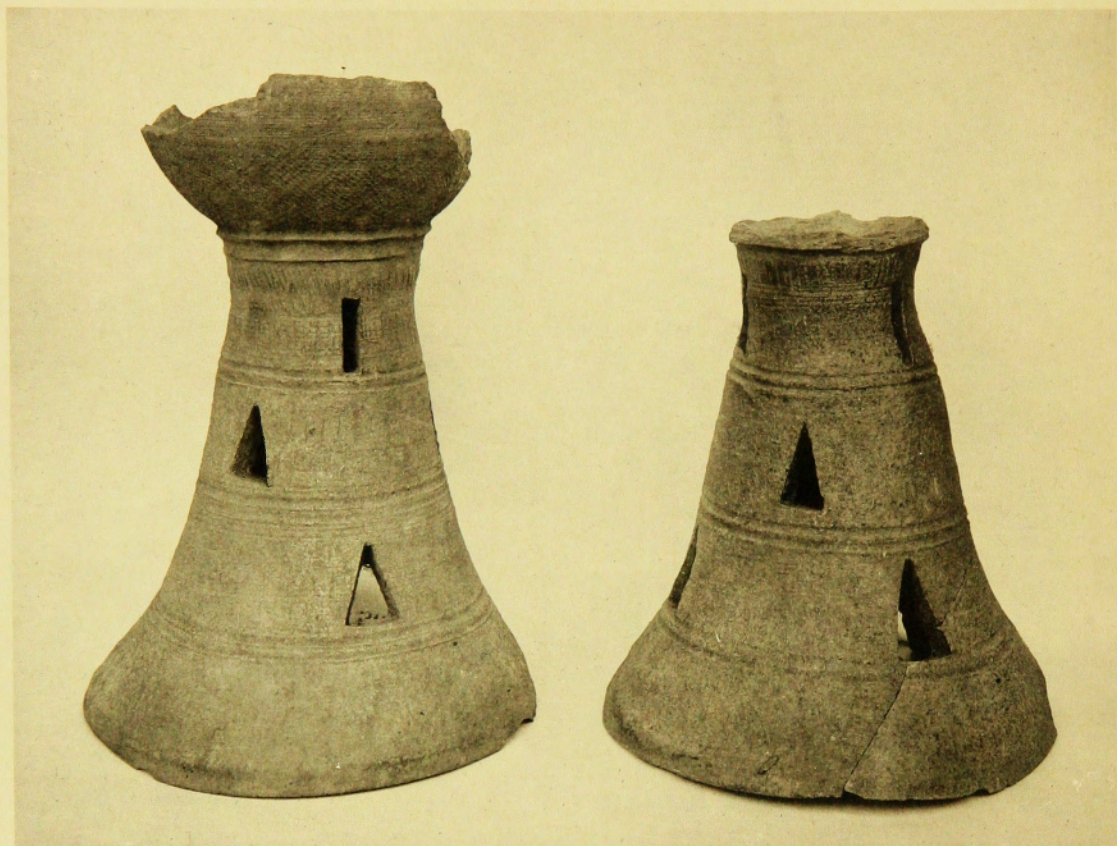


(三) 葉脈壓痕のある杯(下)並に杯の蓋(上)



(四) 土師器埴

PL. XXVII. Remains; *Iwaibe* Pottery Vases etc. found in the Mound



(一) 封土發見祝部臺附壺殘缺



高杯

提瓶

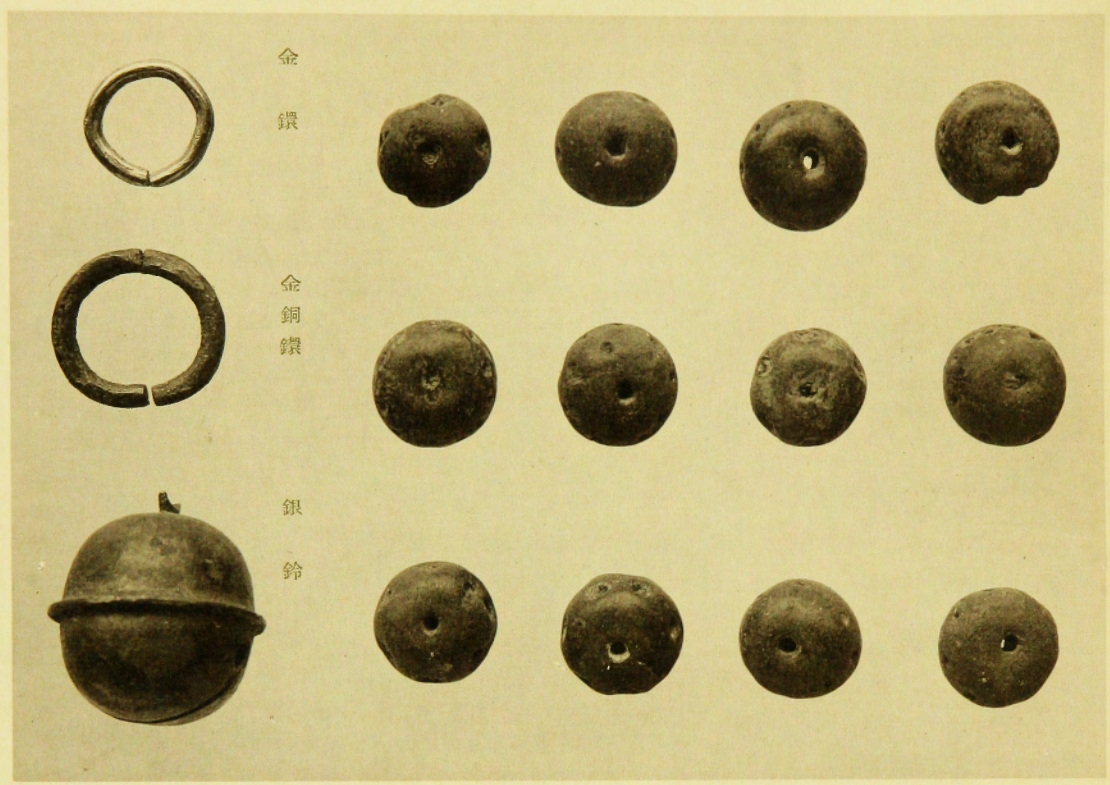
蓋杯

(二) 同上祝部土器



(三) 同上彌生式土器片(左二) 及埴輪圓筒片(右一)

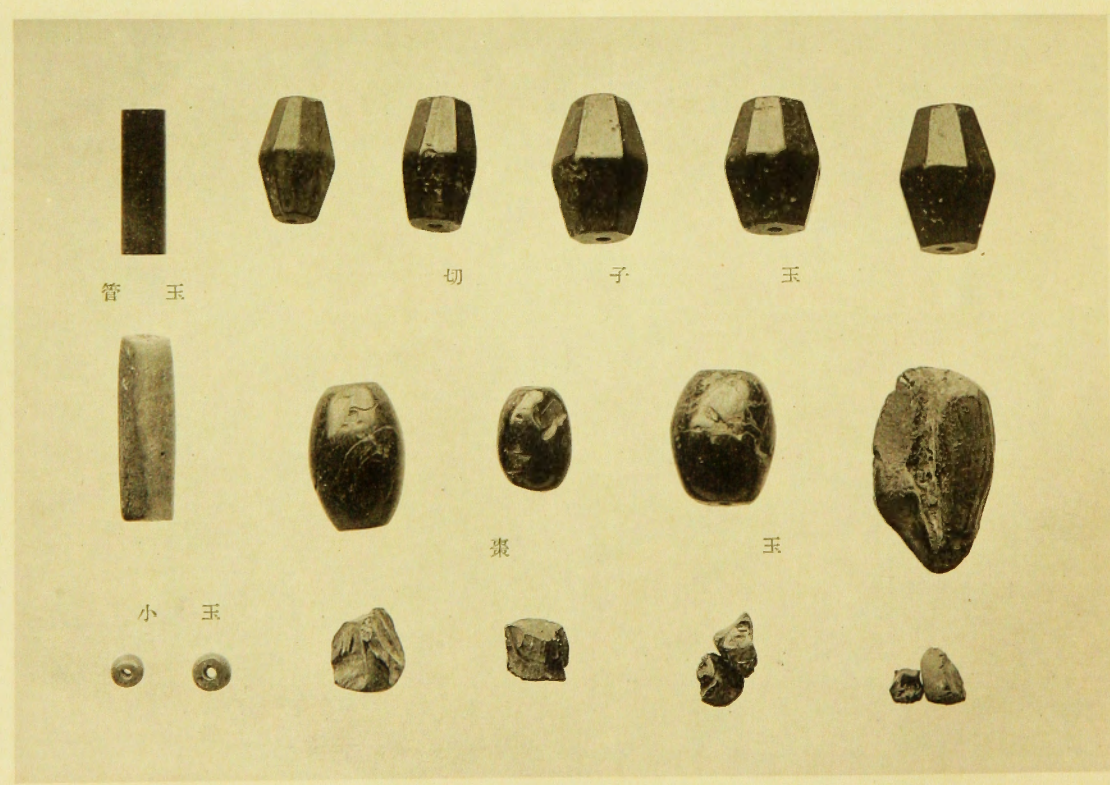
PL. XXVIII. Remains ; Beads and Ear-Pendants



金
銀
金銅
銀
銀
鈴

(一) 丸玉金銀金銅銀銀鈴

(實大)



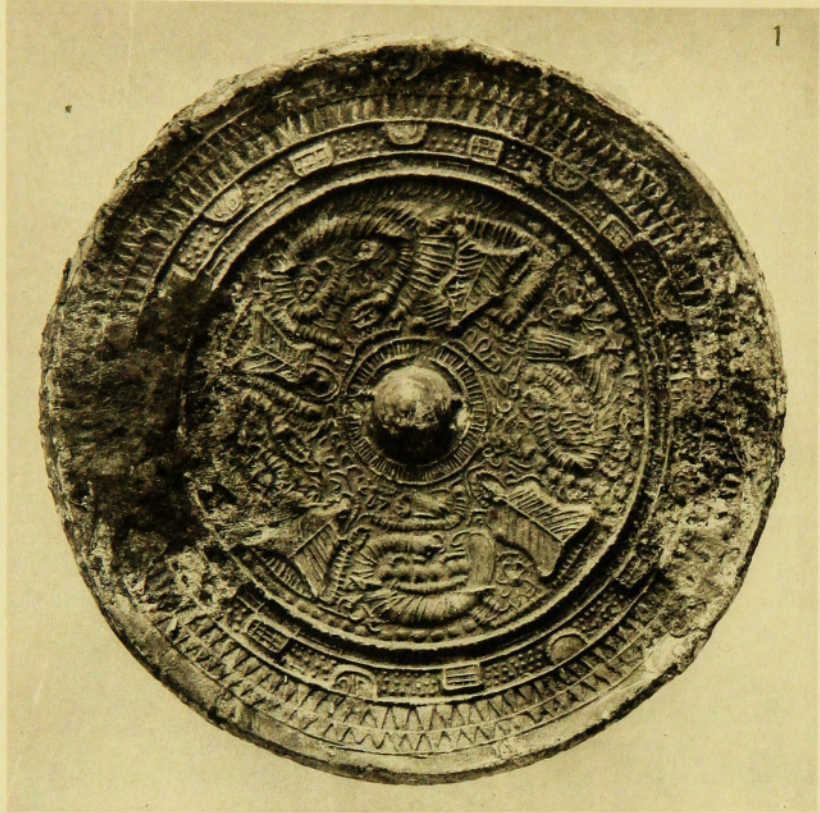
管 玉
小 玉

切 子 玉
棗 玉

(二) 切子玉管玉棗玉小玉

(實大)

PL. XXIX. Remains; Bronze Mirror



1

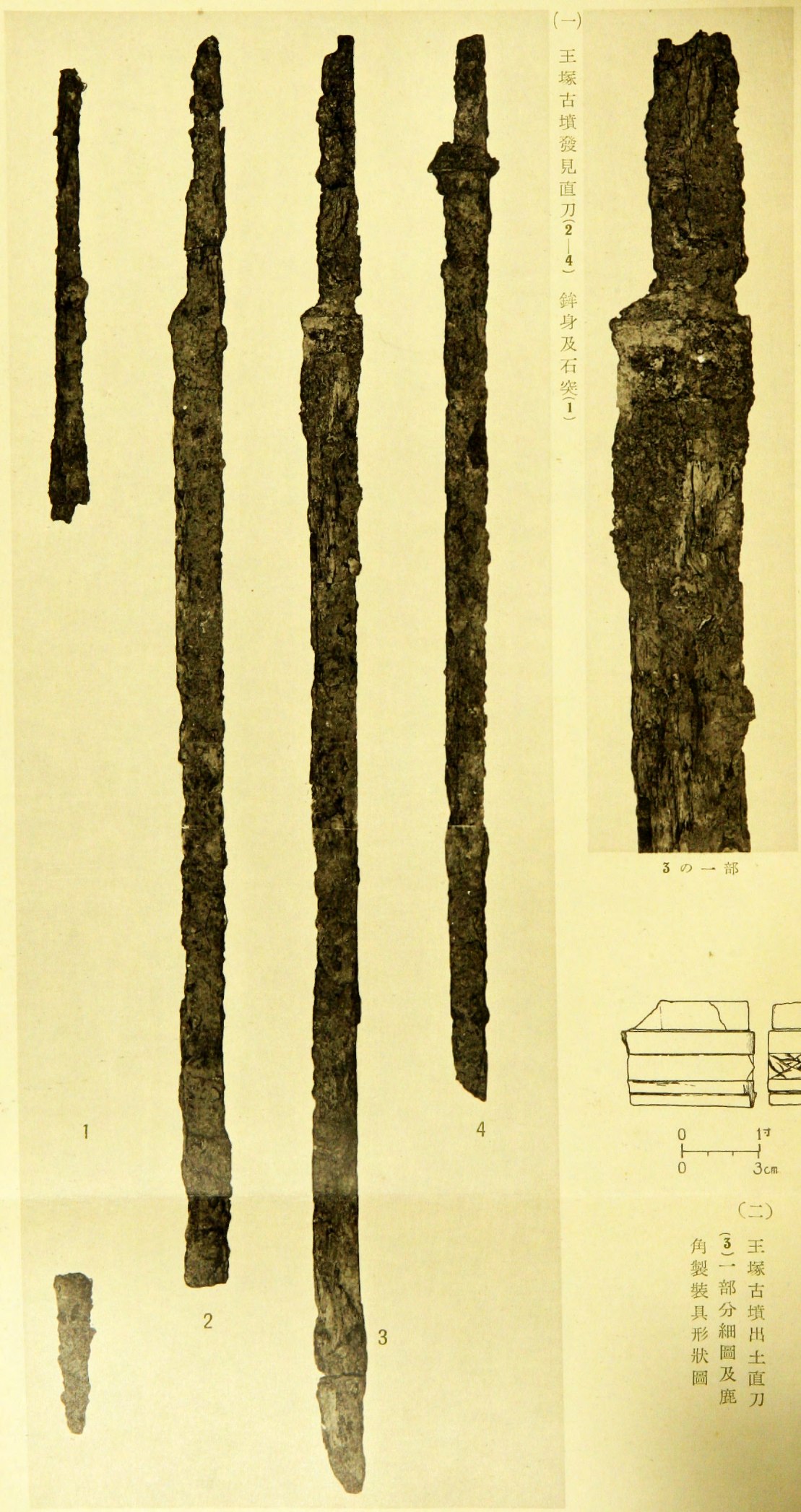


2



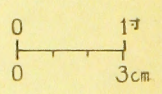
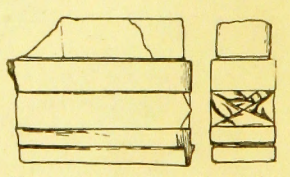
3

變形半圓方形帶神獸鏡 (1)鏡背全景 (2)鏡面之一部 (3)鏡背文一部實大



(一) 王塚古墳發見直刀(2-4) 鉞身及石突(1)

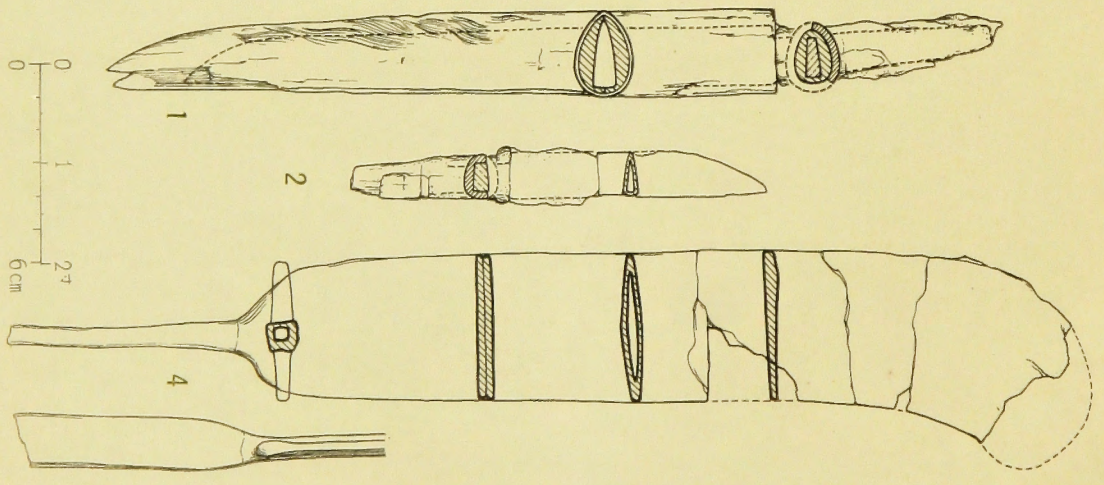
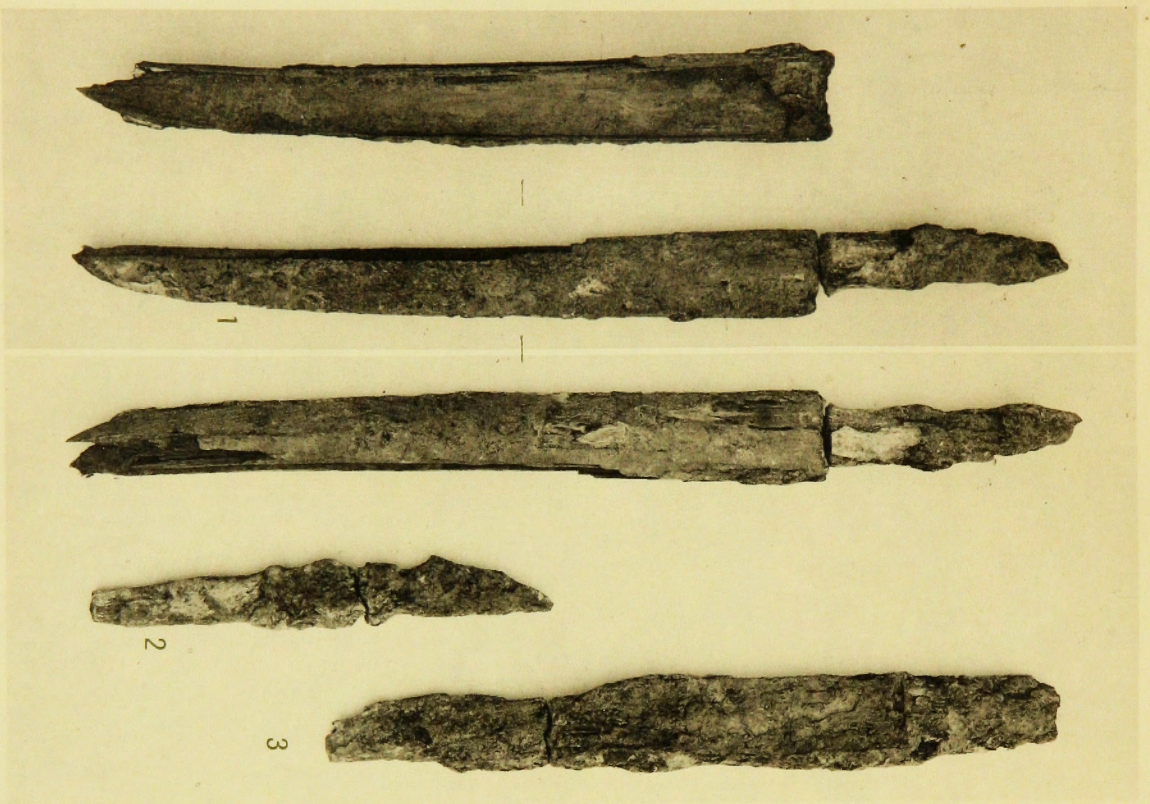
3の一部分



(二)

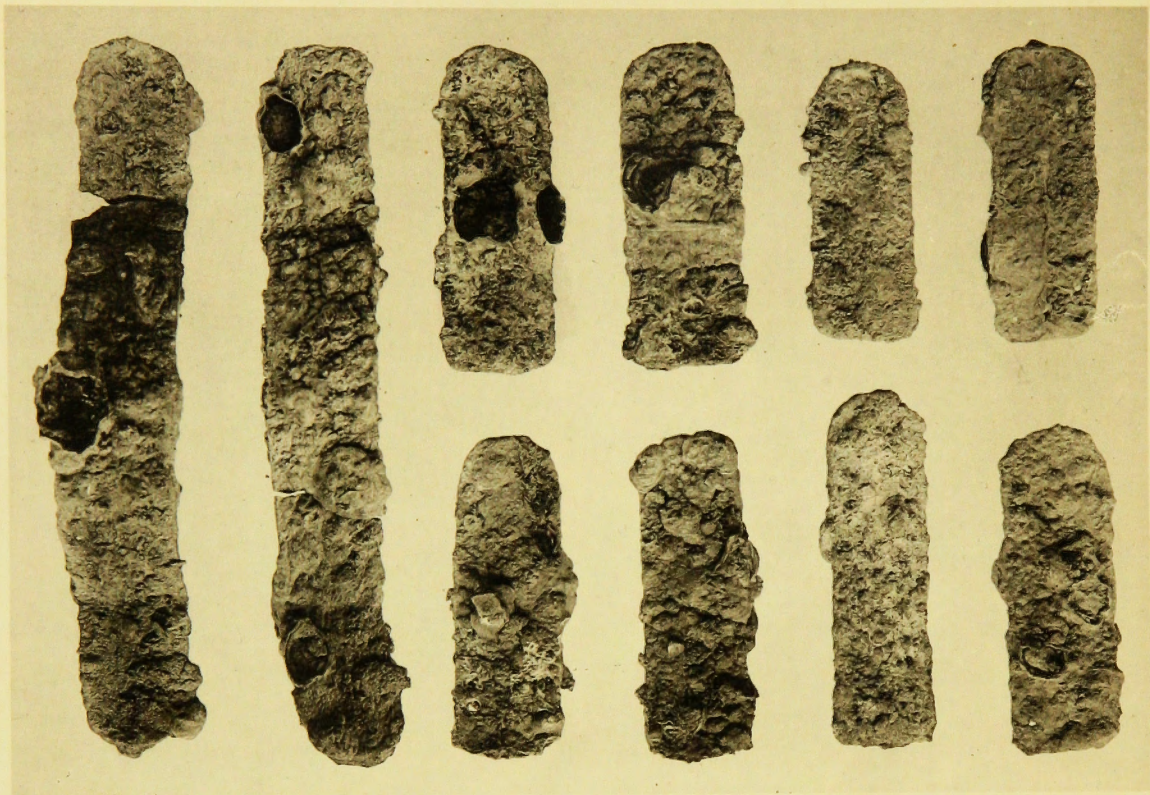
王塚古墳出土直刀
(3)一部分細圖及鹿
角製裝具形狀圖

PL. XXXI. Remains; Small Knives with Antler Hilts. &c.



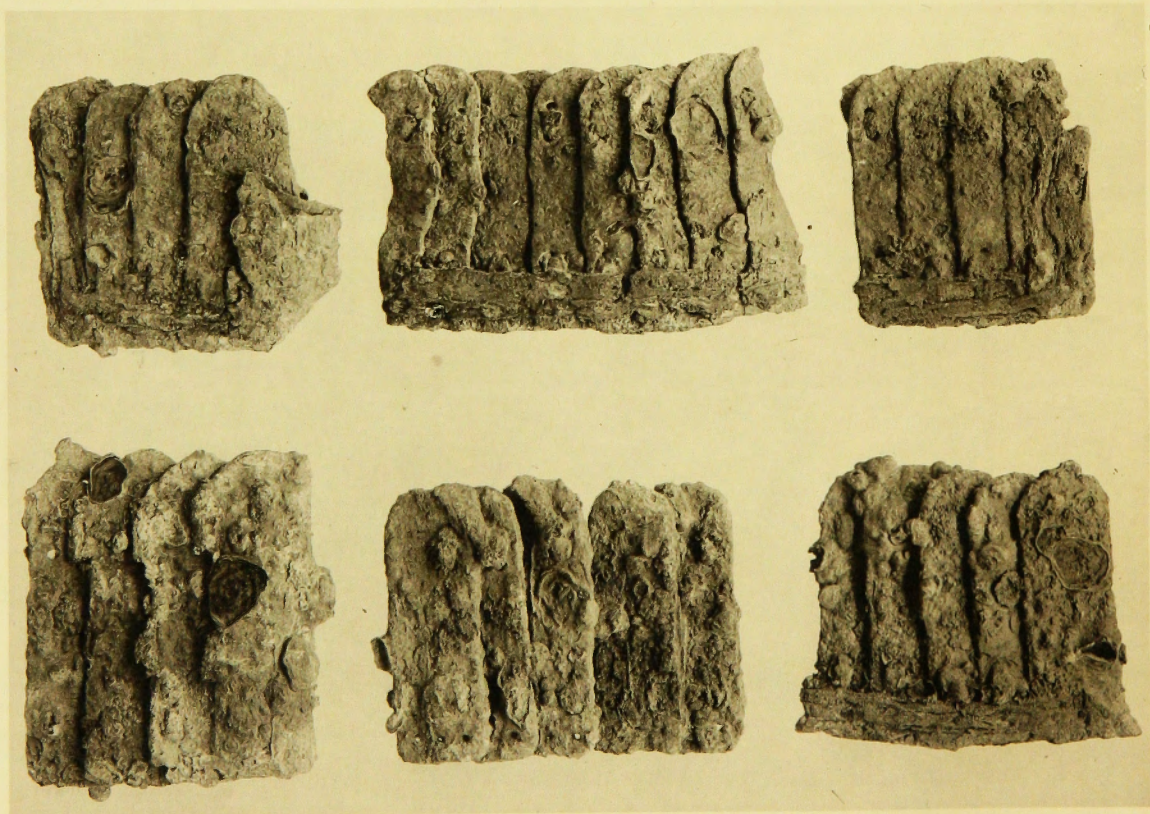
王塚古墳發見鹿角裝刀子(1-3)及異形利器狀鐵製品(4)

PL. XXXII. Remains ; Part of Iron Body Armour



(一) 鐵製挂甲札

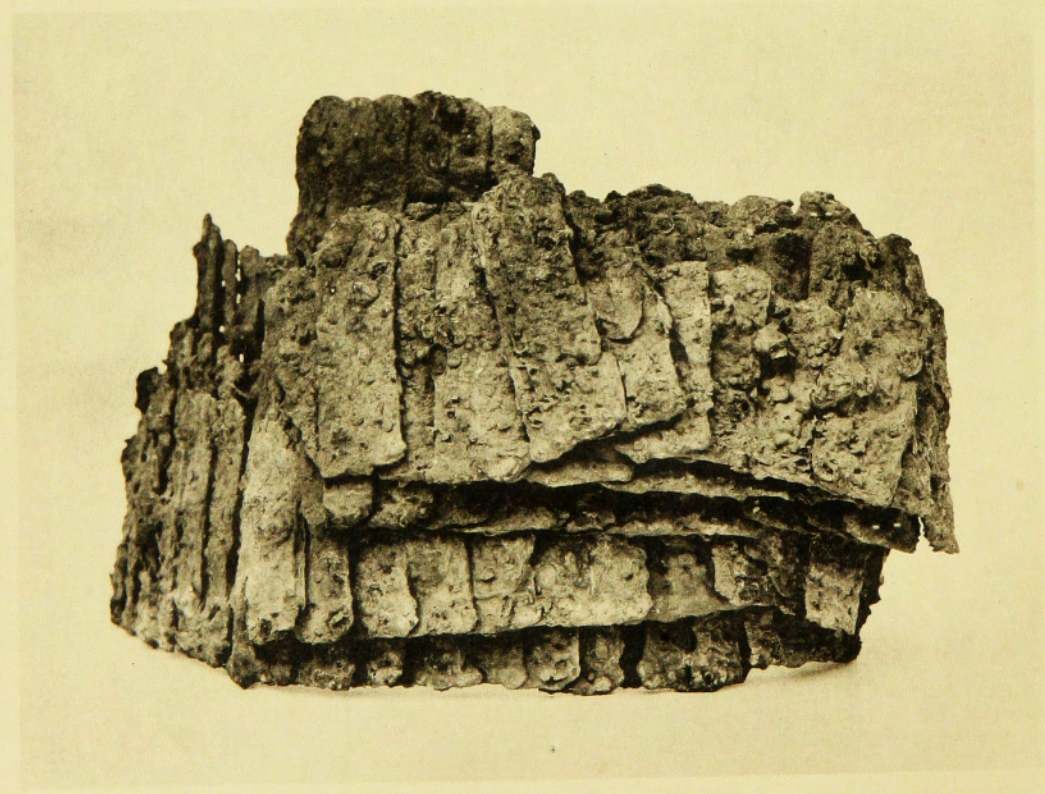
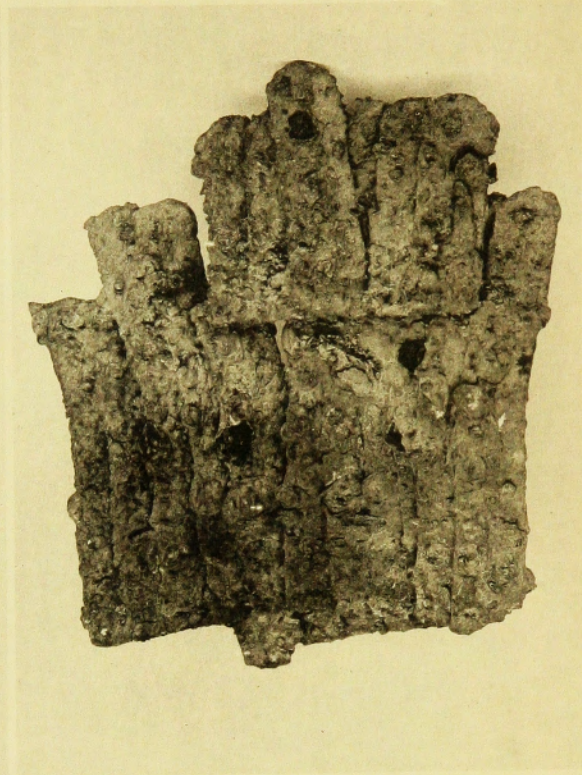
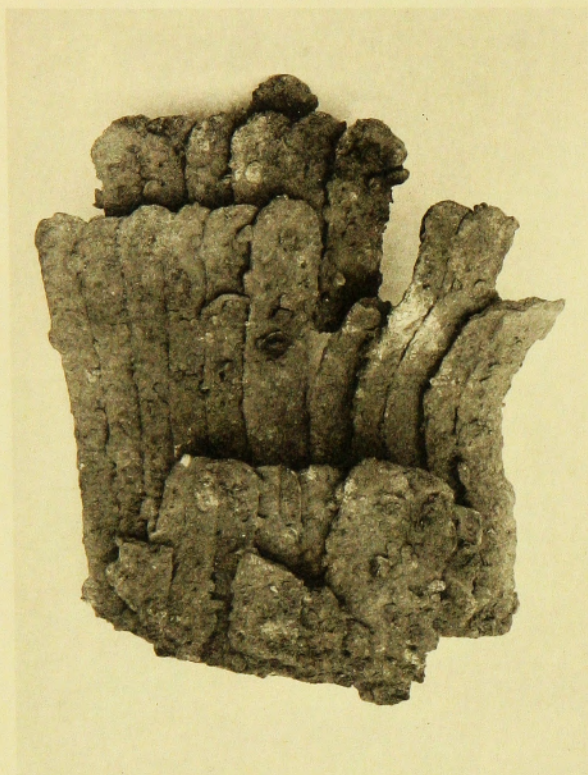
(實大)



(二) 鐵製挂甲鏽着札

(一部覆輪及び威法の
の見らるゝもの)

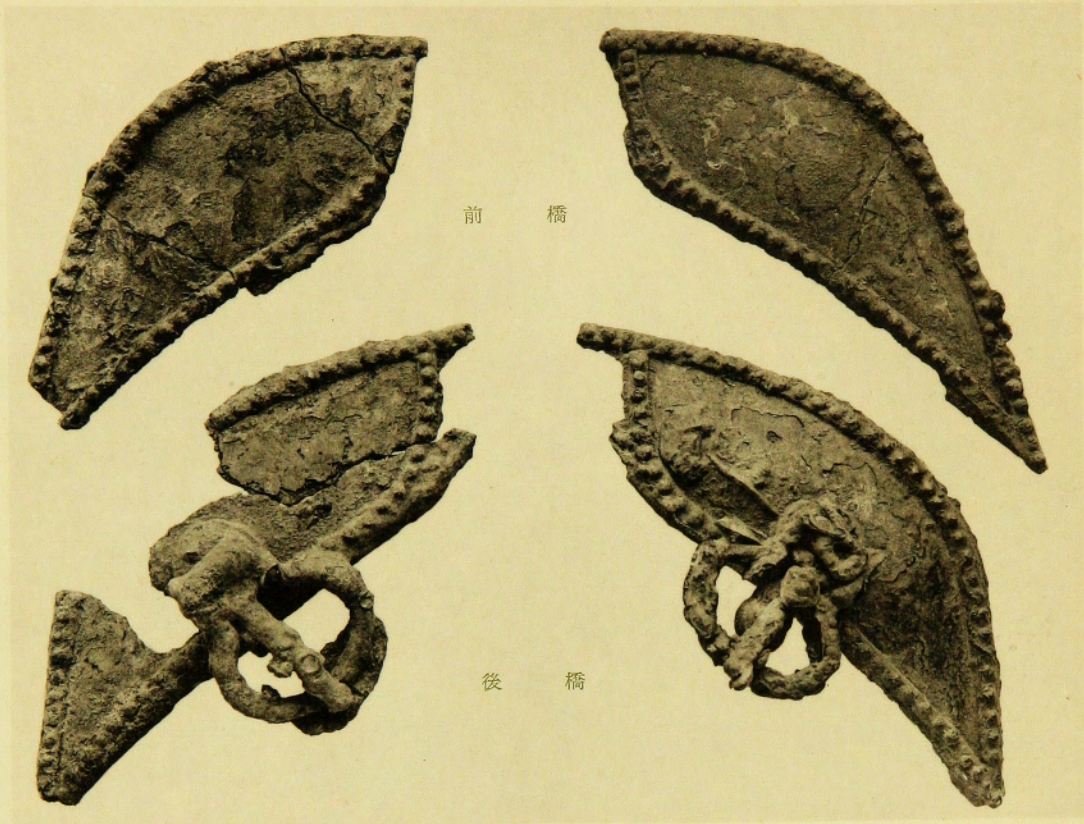
PL. XXXIII. Remains; Part of Iron Body Armour



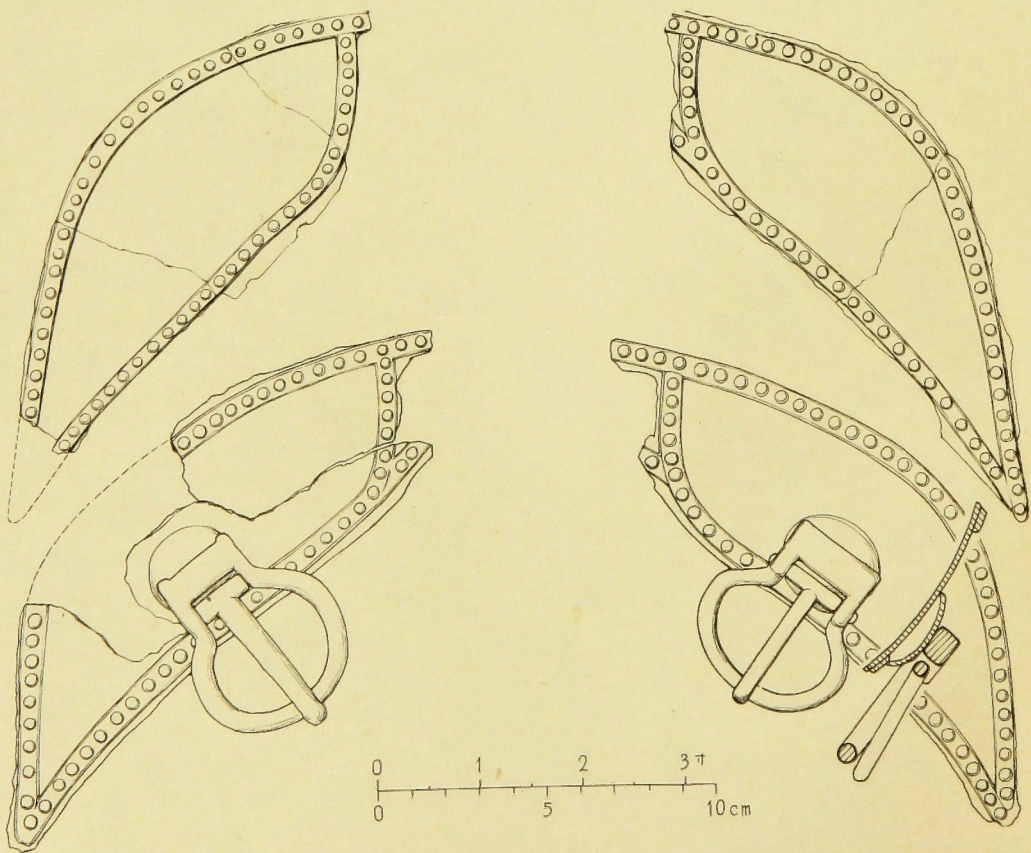
(下)(上)
鐵製挂甲鋪着札
鐵製挂甲鋪着札 (表裏を示す)

PL. XXXIV. Remains; Part of Horse Saddle

(一) 前後兩橋磯金具

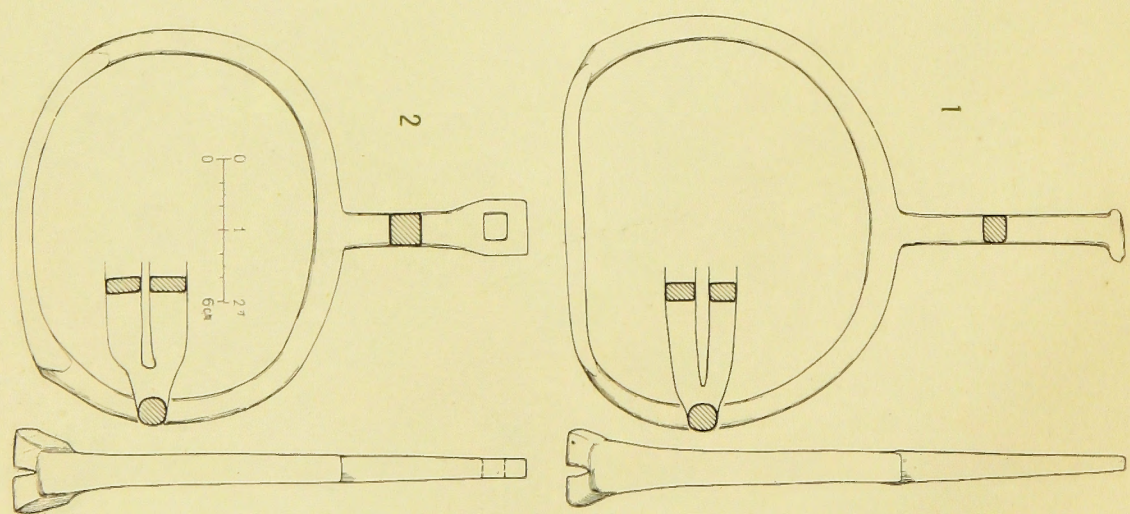
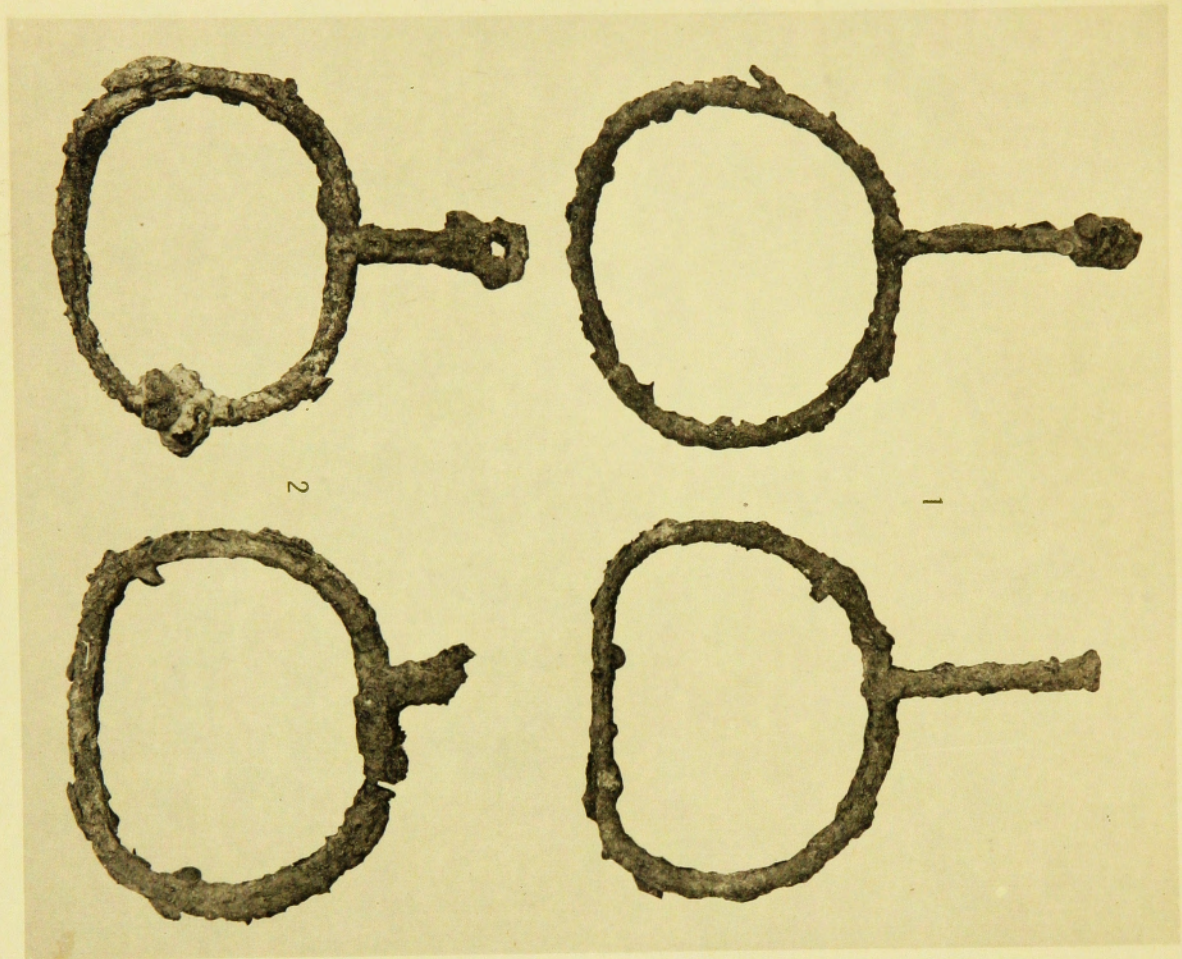


(二) 同 上形狀實測圖



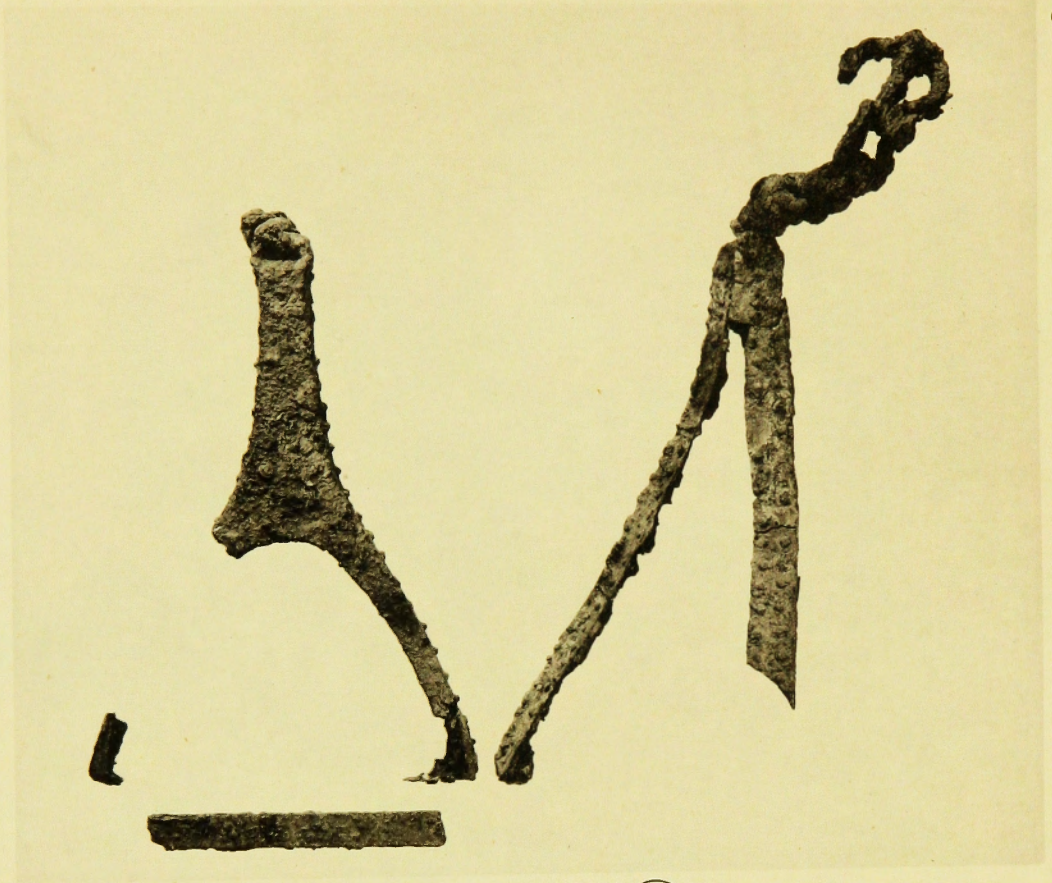
(梅原實測・小林製圖)

PL. XXXV. Remains ; Iron Stirrups

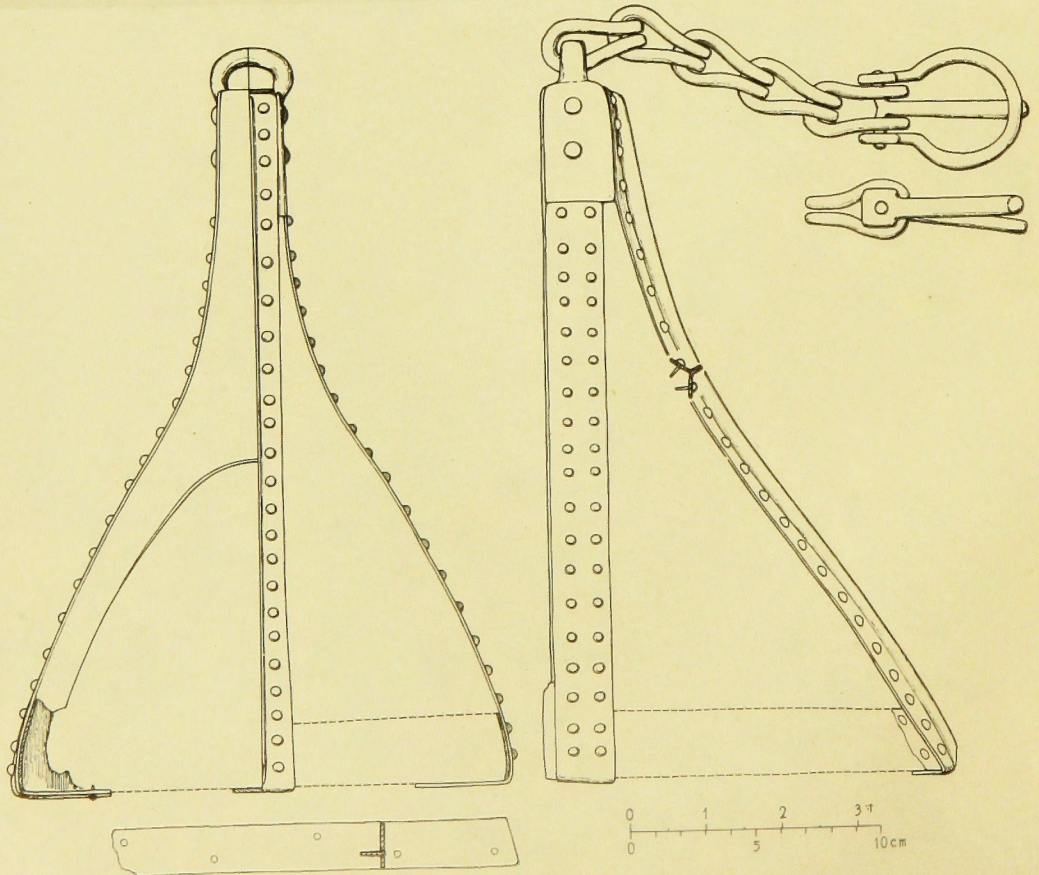


鐵製輪銜 二双

(右實測圖 極原實測・小林製圖)

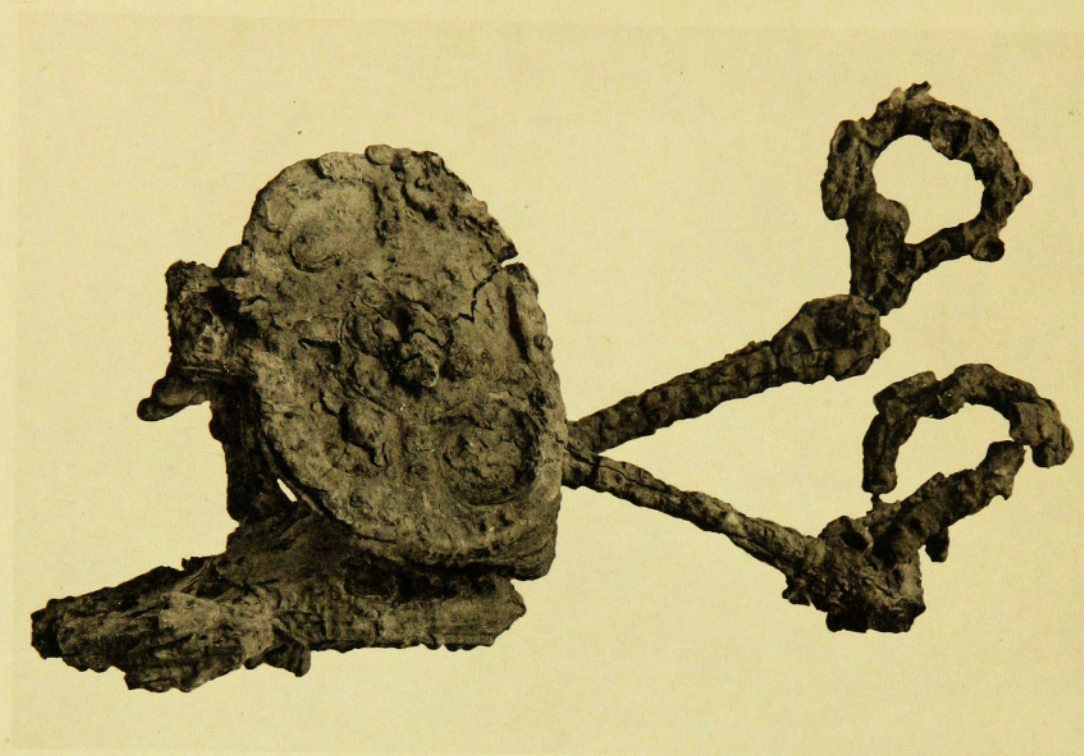


(一) 壺 鐙 殘 缺

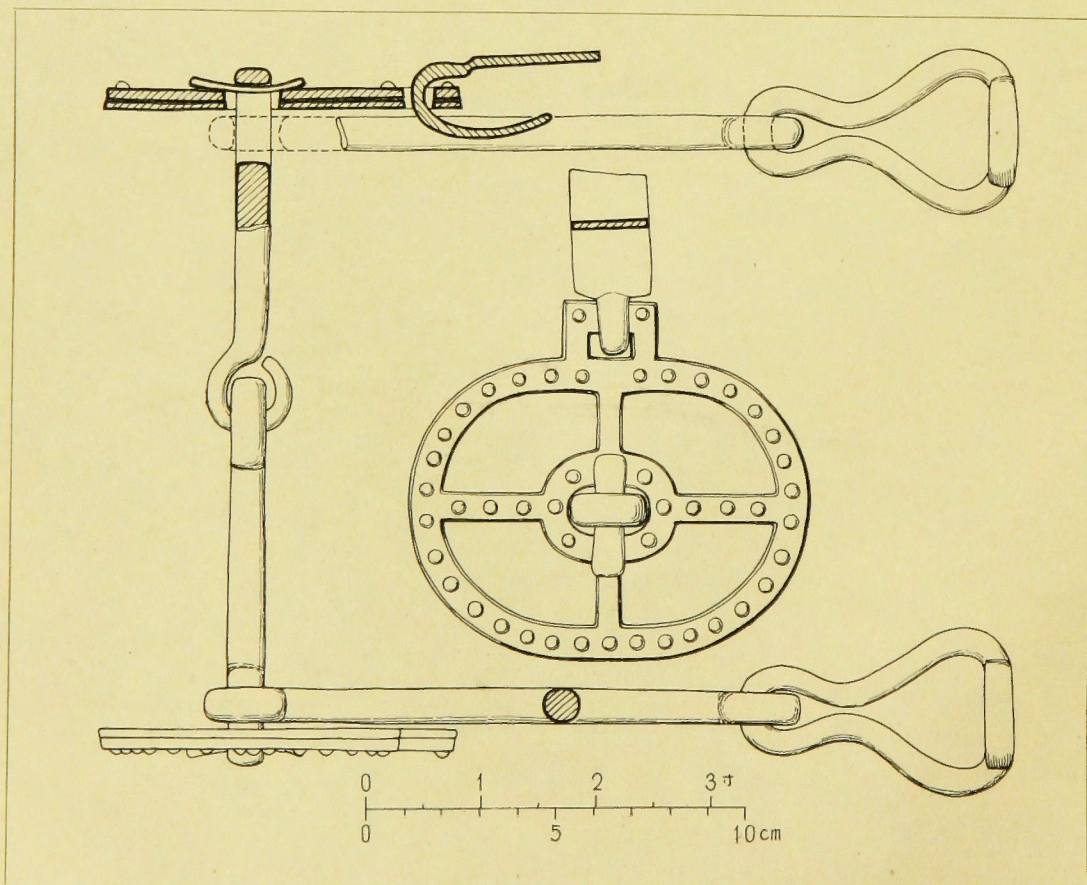


(二) 同 上 復 原 實 測 圖

PL. XXXVII. Remains; Bridle-bit

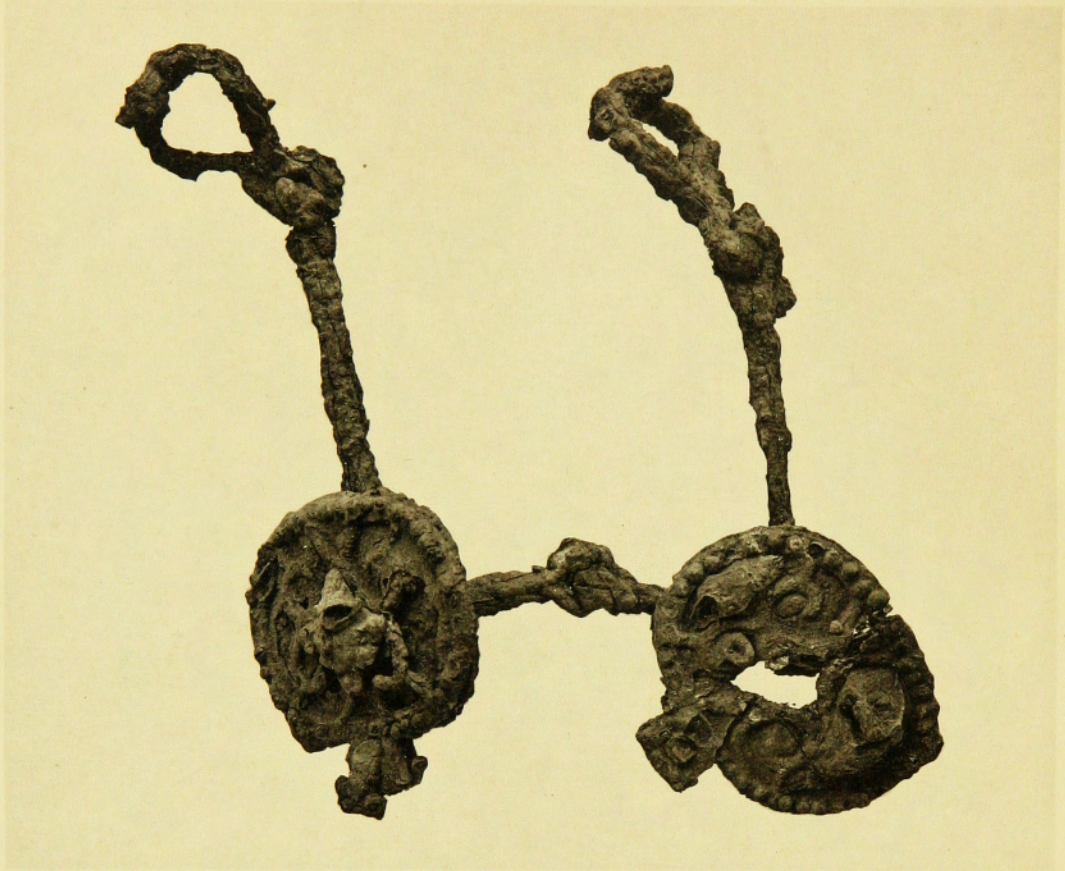


(一) 鐵地金銅張鑣轡 (其一)

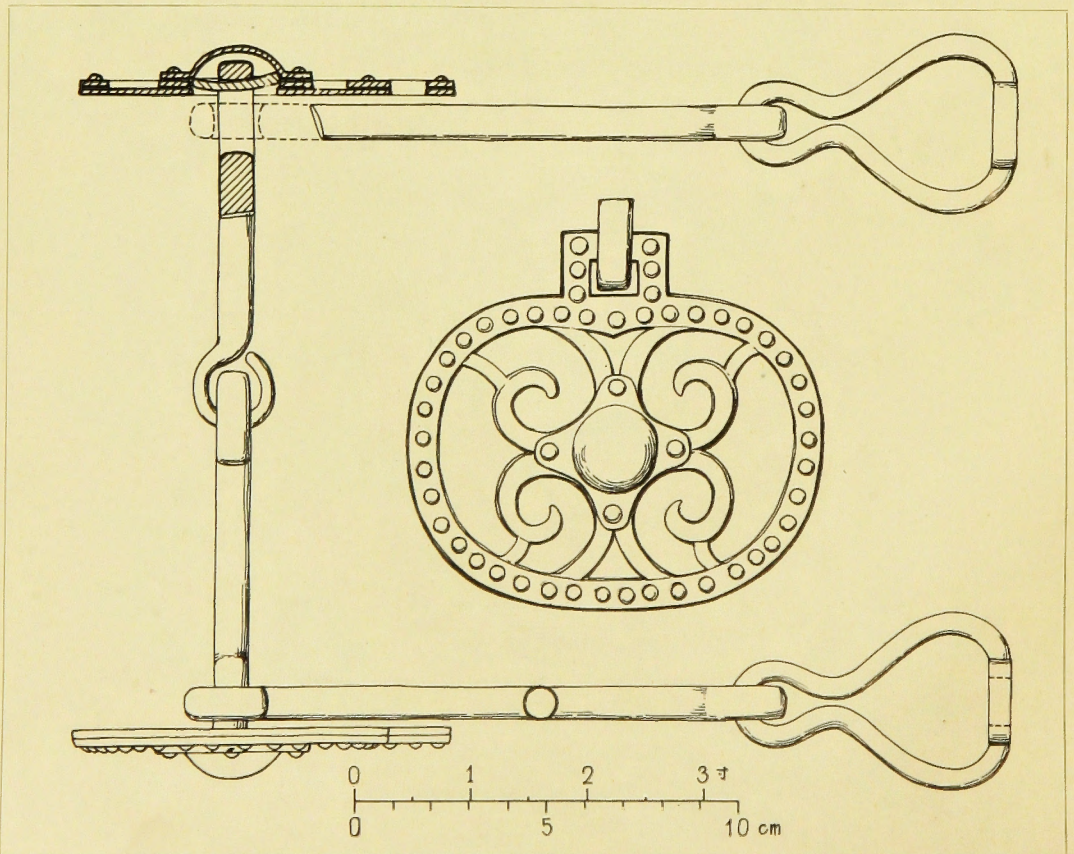


(二) 同上實測圖

(梅原實測・小林製圖)

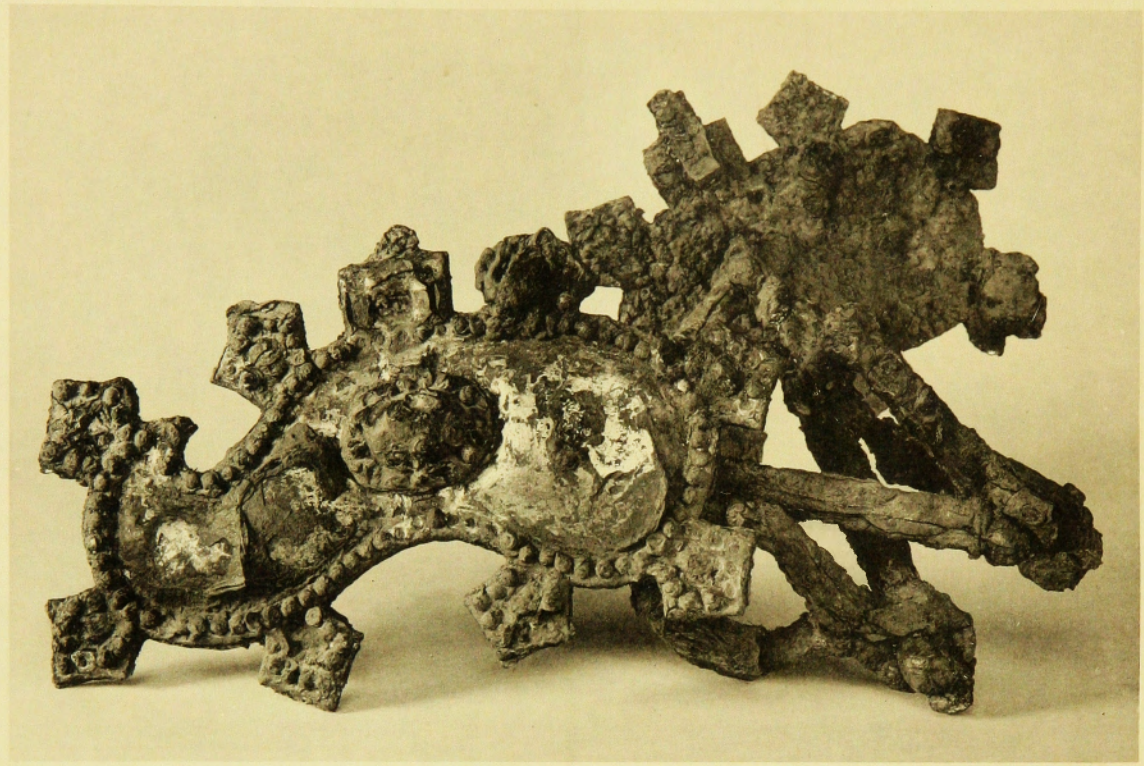


(一) 鐵地金銅張鑣轡 (其二)

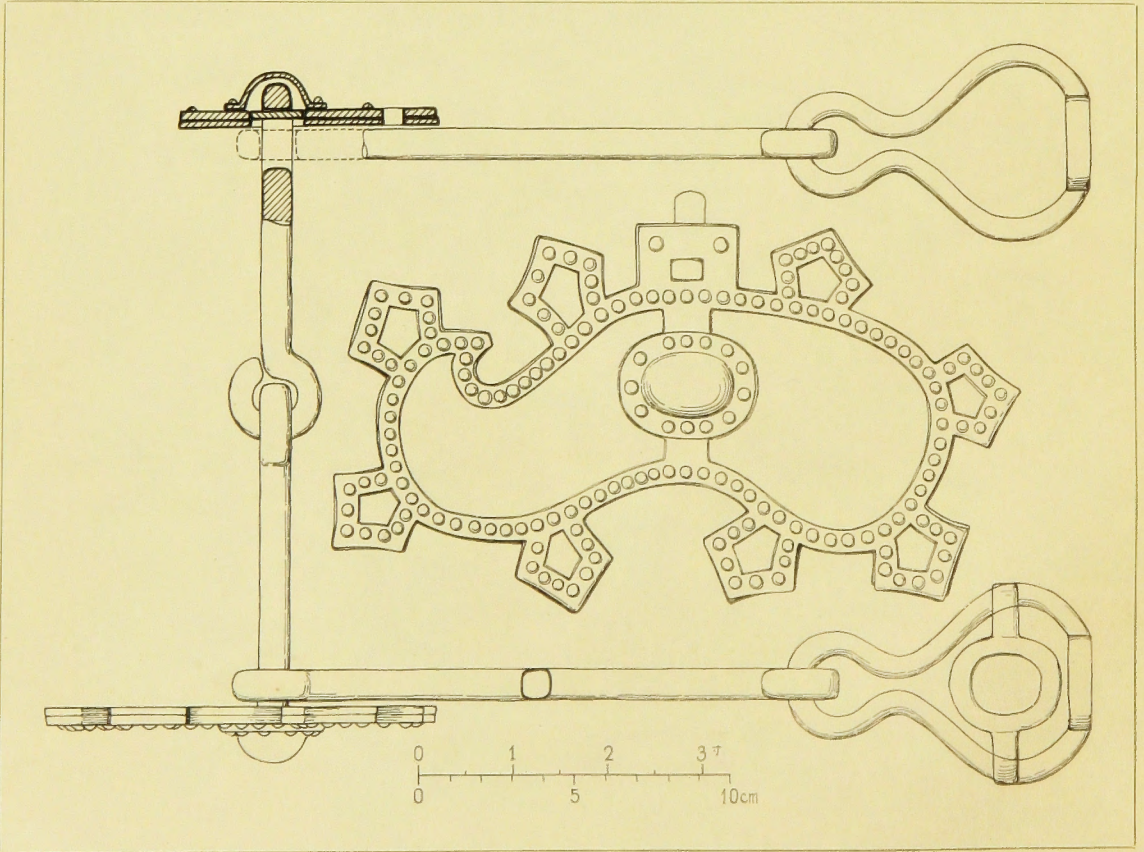


(二) 同上實測圖

PL. XXXIX. Remains ; Bridle-bit



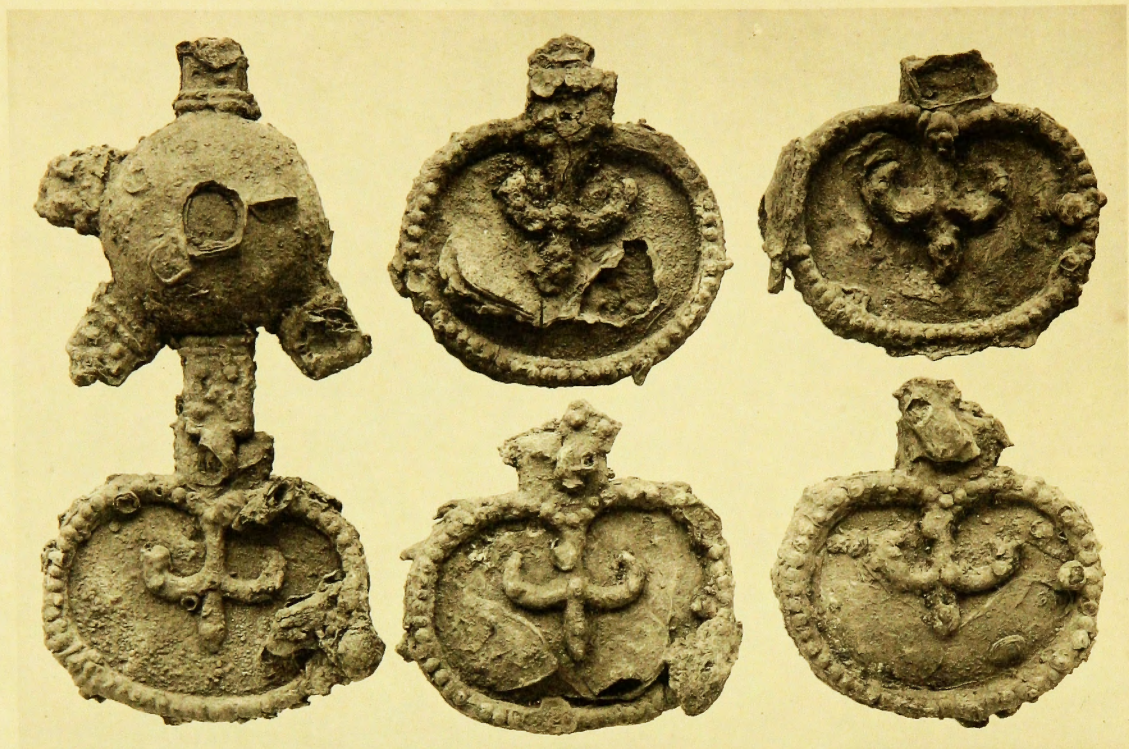
(一) 鐵地金銅張S字形鑿轡



(二) 同上實測圖

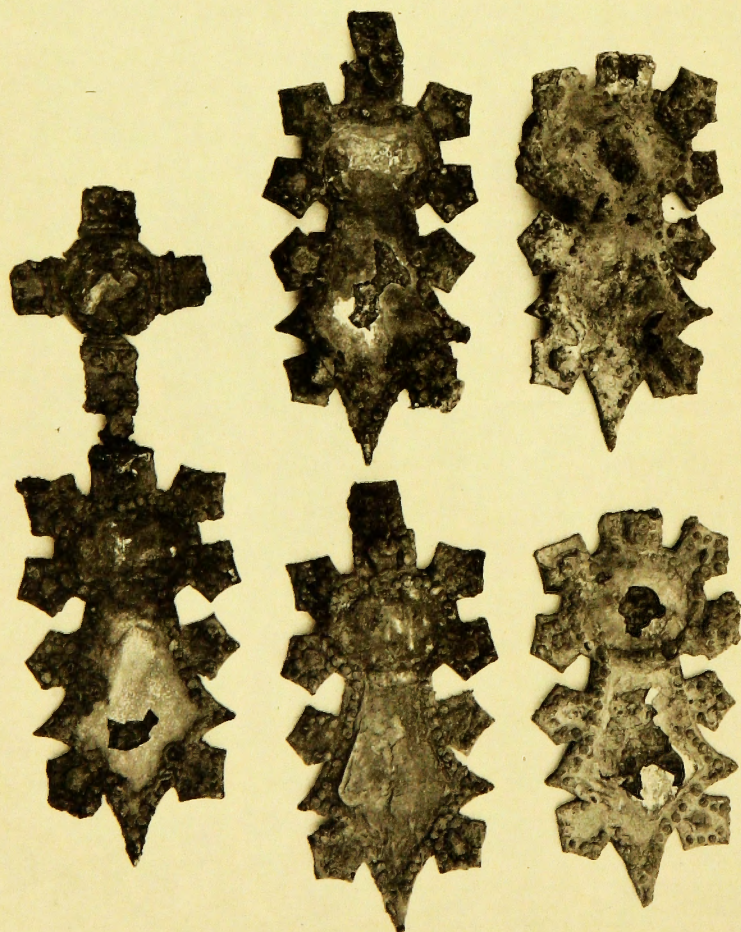
(小林實測製圖)

PL. XL. Remains; Gilt Bronze-plated Iron "Gyoyo" Ornaments.

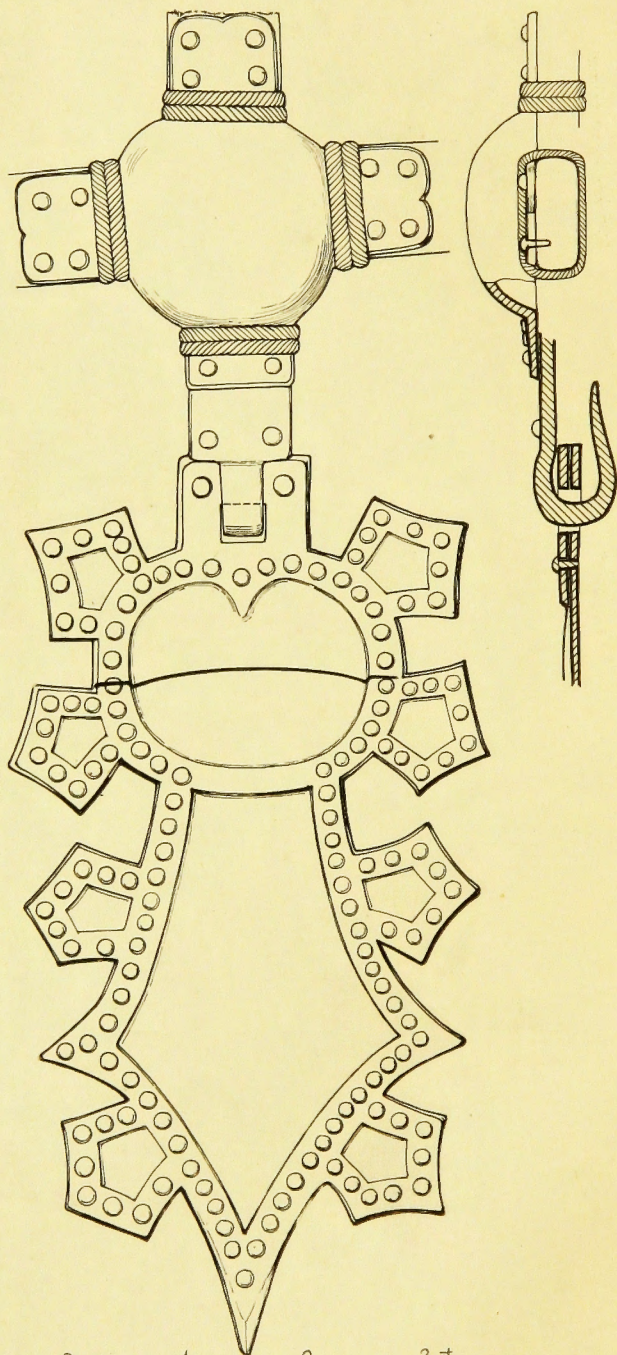
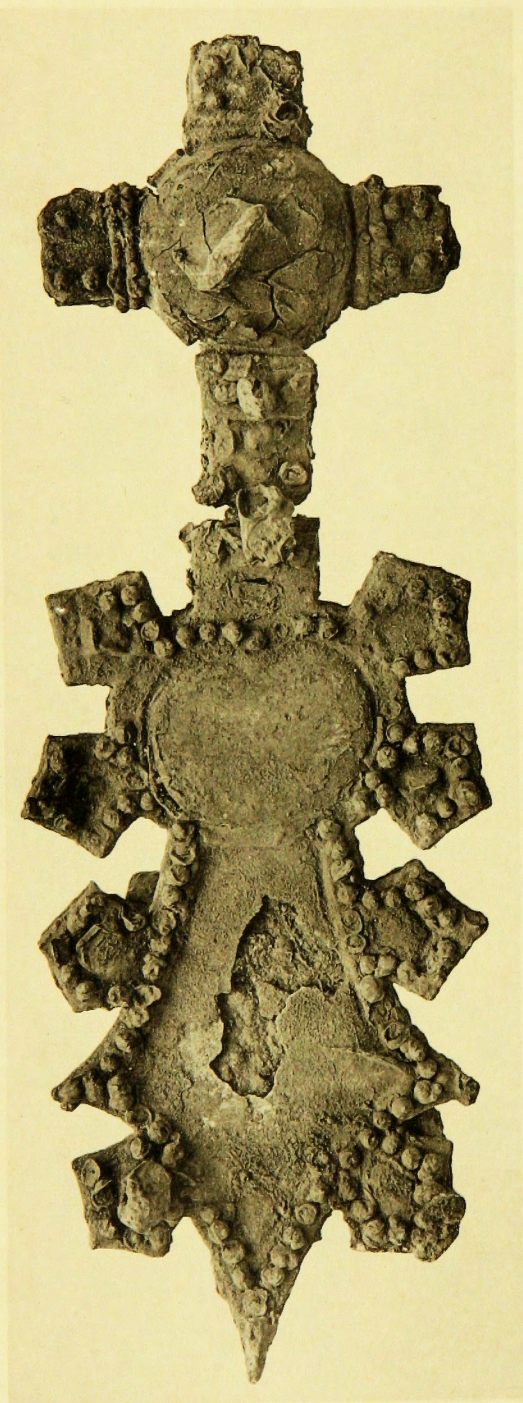


(下) (上)

鐵地金銅張
 結紐形杏葉

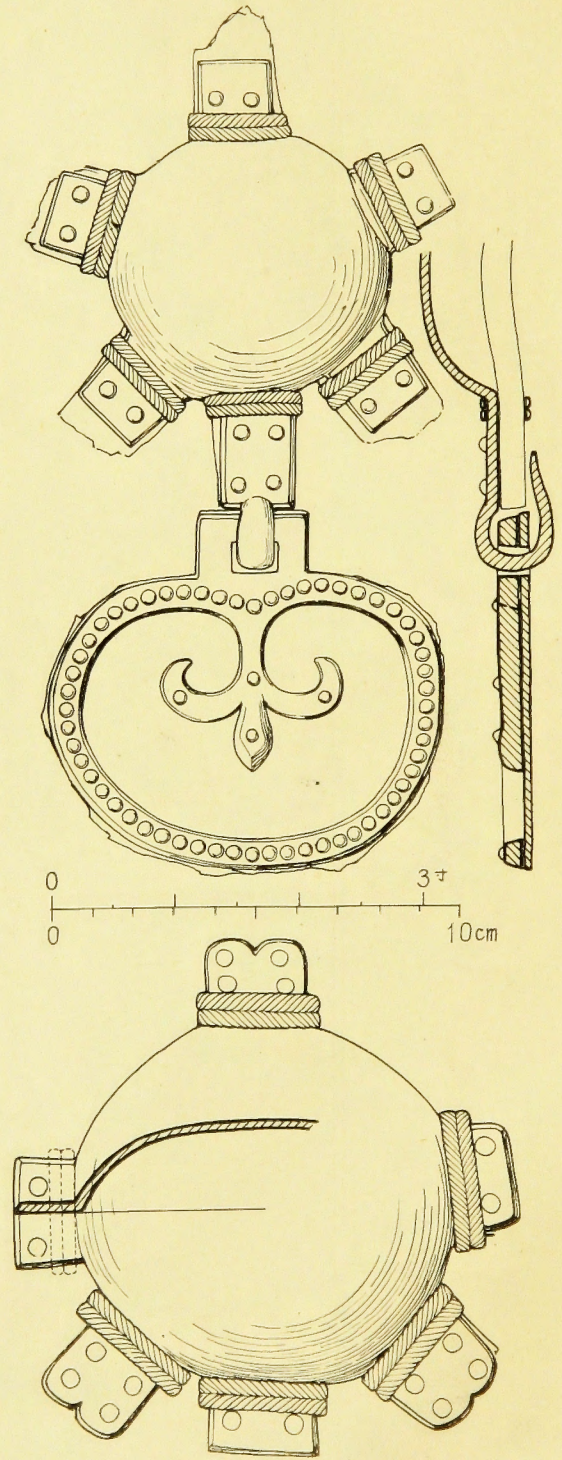
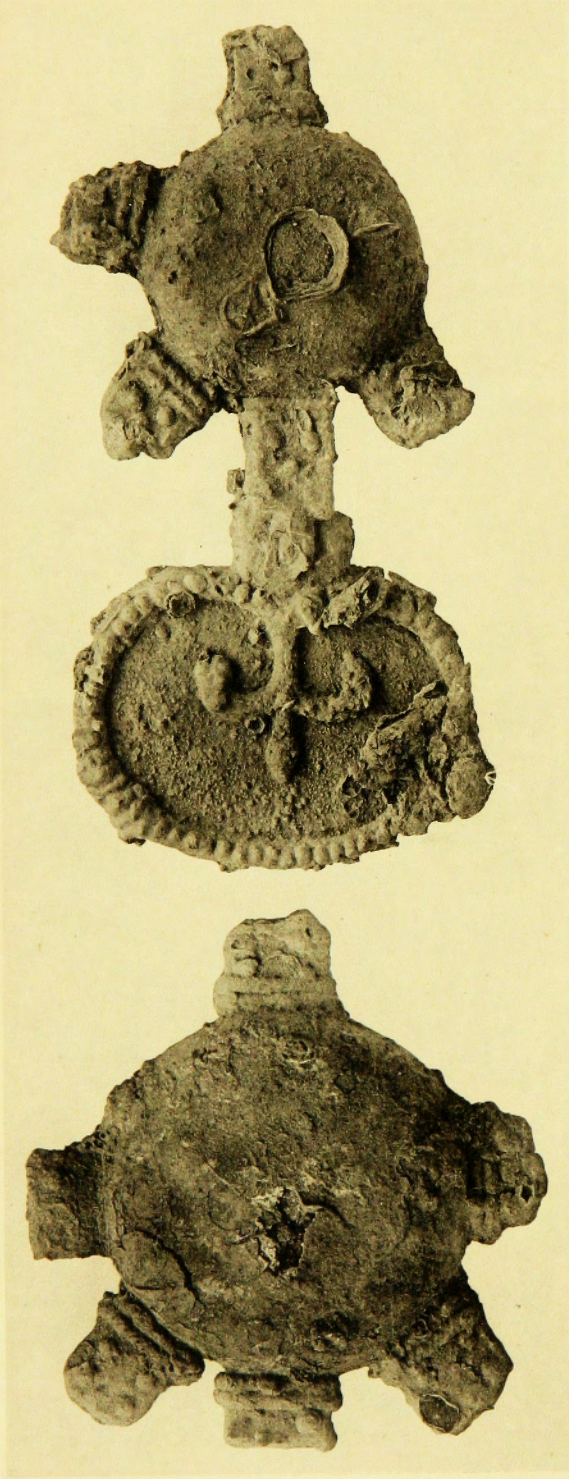


PL. XLI. Remains ; Gilt Bronze-plated Iron "Udzu" and "Gyoyo" Ornaments



鐵地金銅張雲珠に着裝の原形を遺存せる同製の結紐狀杏葉

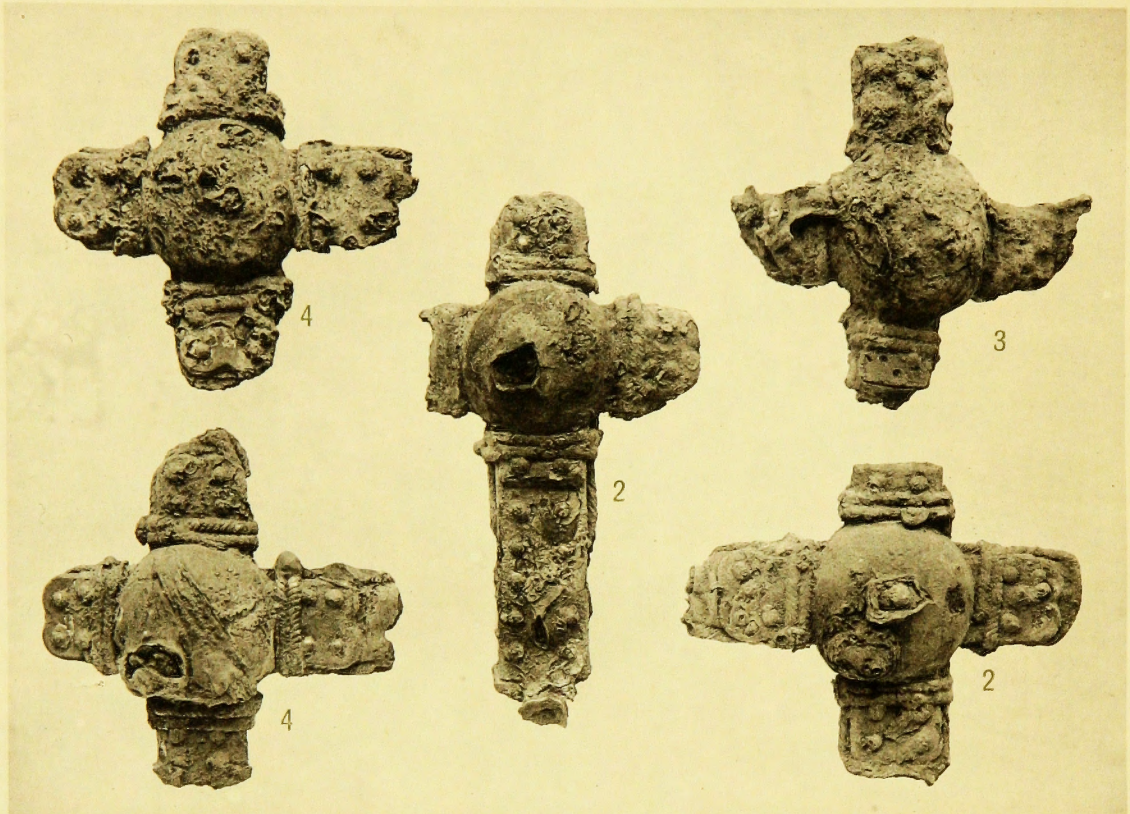
P. XLII. Remains; Gilt Bronze-plated Iron "Udzu" and "Gyoyo" Ornaments



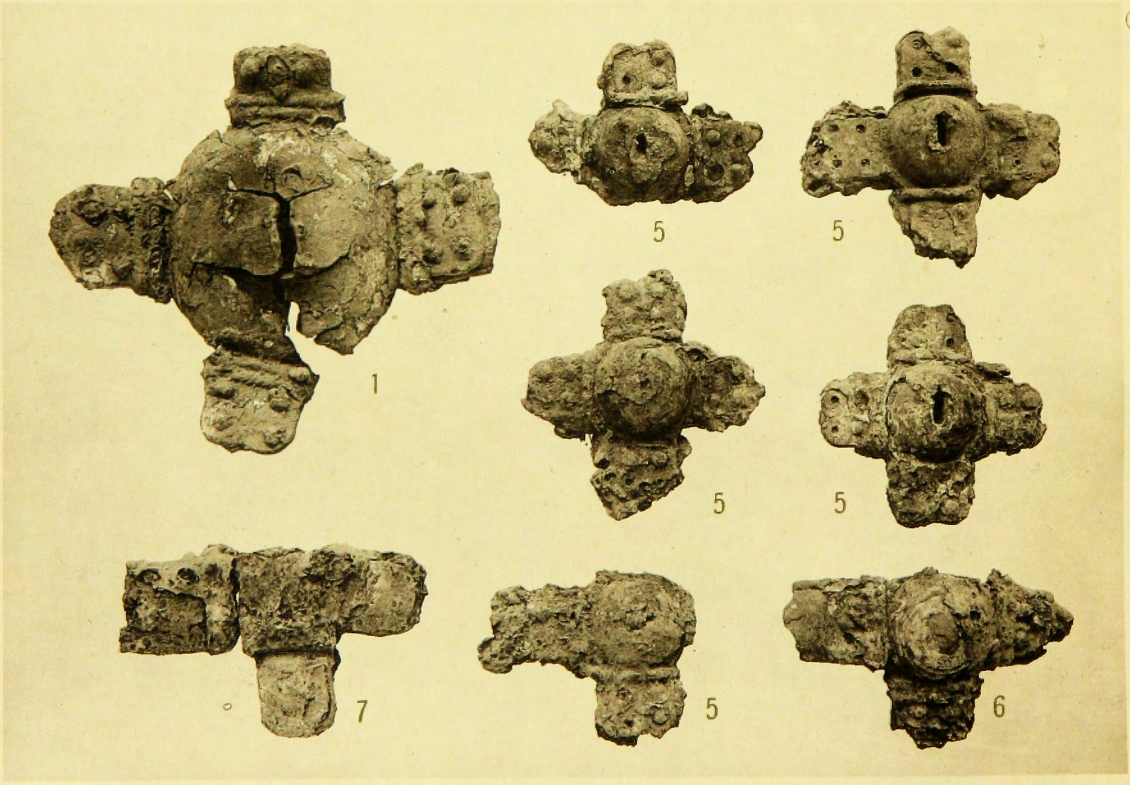
鐵地金銅張雲珠(下)及びそれに懸垂の原形を遺存せる扁圓形杏葉(上)

(梅原實測・小林製圖)

PL. XLIII. Remains; Gilt Bronze-plated Iron "Udzu" Ornaments



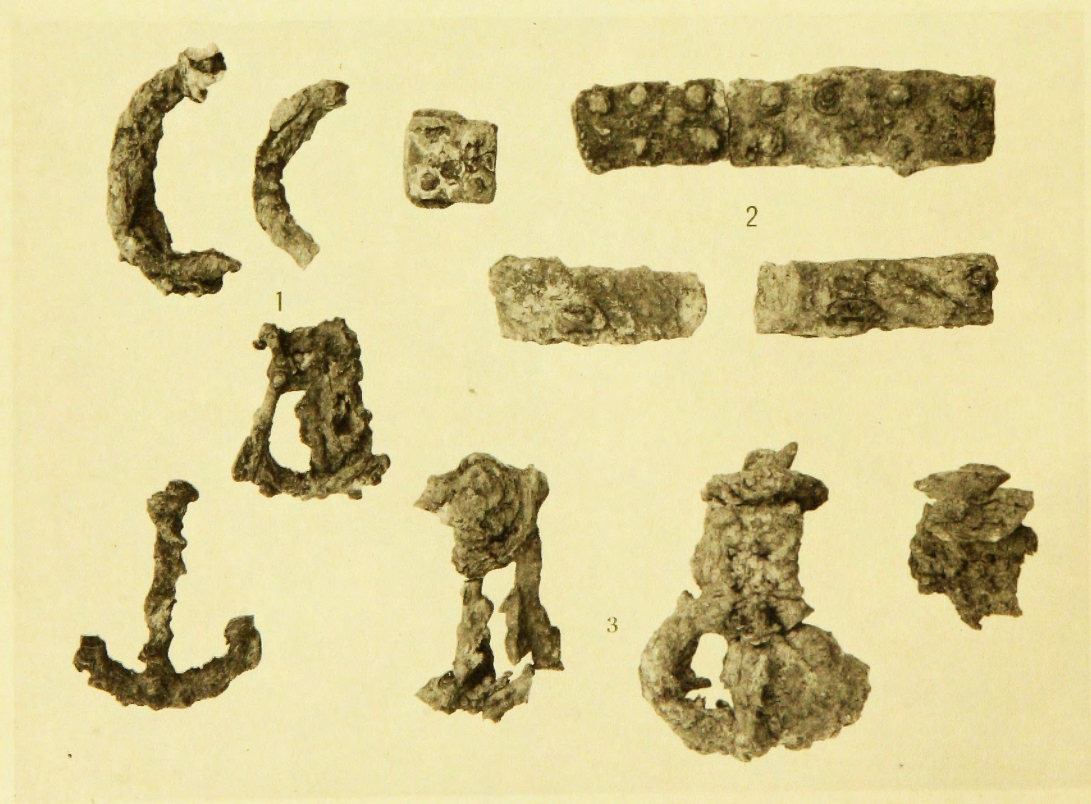
(一) 鐵地金銅張十字形雲珠 (其二)



(二) 鐵地金銅張十字形雲珠 (其二)



(一) 鐵鏃(左)及鉤手形鐵製品(右)



(二) 銀被鉤狀品(1) 銚具(3) 及金具殘缺(2)