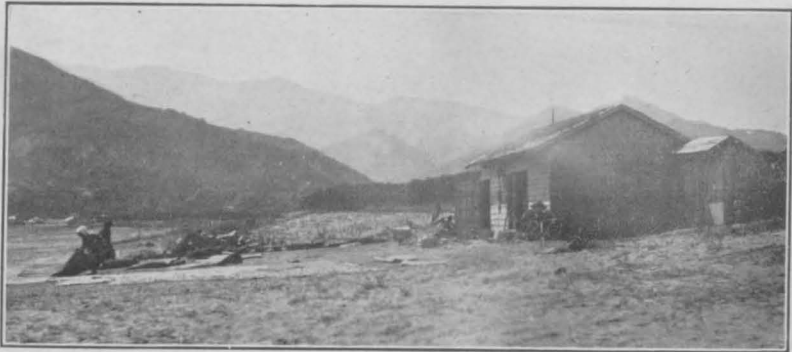
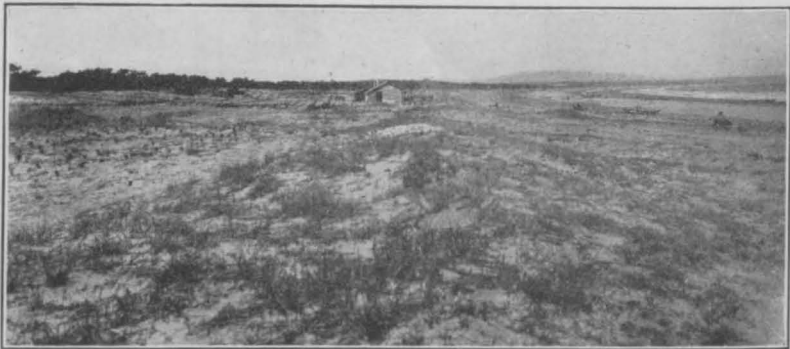


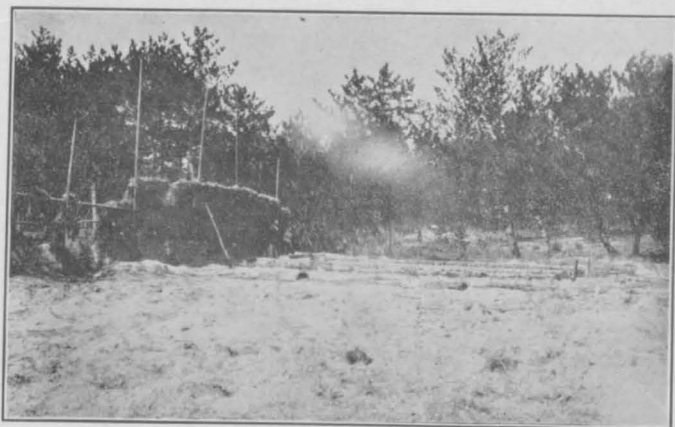


第二圖



第三圖





第五圖



第六圖



第七圖



第八圖

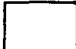

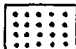


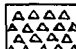
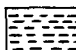






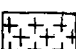


第九圖



第十圖



- 沖積層 
- 新期段丘層 
- 古期段丘層 
- 笠尾峠礫層 
- 古琵琶湖統 
- 熊野倉骨點川礫層 
- 山女原砂岩 
- 上ノ平砂岩泥岩 
- 千谷砂岩泥岩 
- 川西礫岩 
- 龍谷砂岩 
- 鷹戸川礫岩 
- 古生層 
- 花崗岩 
- 石英斑岩 