

ARCHIV  
*Für*  
*Japanische Chirurgie*

Bd. 45 1976

日 本 外 科 宝 函

第 45 卷 總 目 次

CHIRURGISCHE UNIVERSITAETSKLINIK  
KYOTO JAPAN

(Arch. Jap. Chir.)

京都大学医学部外科整形外科学教室内

(日. 外. 宝)

日本外科宝函編集室

## 第 45 卷 総 目 次

## 話 題

胆石の原因と治療	長瀬正夫 (1)
神経縫合術に関する問題点	山本潔 (49)
BCG 癌免疫療法	塩田隆三 (199)
中枢神経系奇形の胎生期診断	森惟明 (241)
骨折の治療	広谷速人 (327)
血管外科の将来とその展望	毛利喜久男 (435)

## 原 著

コレステロール系胆石及び急性膵炎の発生機序について	谷村弘, 他 (3)
損傷脳に発生する反応性 gliosis 組織の経時的変化に関する研究 ——特に血液脳関門の変化を中心として——	鮫島寛次 (17)
頸椎症性脊髄症の成因	富永積生 (51)
Radiocardiogram による心内短絡の定量的解析の試み ——とくに、その手法的分析について——	横田通夫 (69)
フォロー四徴症根治手術の臨床的研究： とくに右室流出路拡大度と手術成績ならびに 術後血行動態に関する年令別検討	奥秀喬 (87)
脳室出血の急性期病態生理に関する実験的研究	小林東洋 (109)
急性呼吸不全に対する膜型人工肺 (Landé-Edwards) による補助循環の効果に関する実験的研究	角隆一 (123)
手指屈曲運動に関する実験並びに臨床研究 ——組織損傷による指屈曲運動変化について——	上羽康夫 (134)
骨端線部分切除における骨端軟骨細胞の増殖に関する実験的研究	榊田喜三郎, 他 (201)
ラット胃における内分泌および外分泌細胞に関する電子顕微鏡的検索 I. 正常ラット胃における内分泌細胞	佐野正博 (243)
ラット胃における内分泌および外分泌細胞に関する電子顕微鏡的検索 II. 絶食時, 給食時, 迷走神経電気刺激時の主細胞および壁細胞の形態学的変化	佐野正博 (265)
胃外性ガトリンに関する研究: その分泌機序について	十亀東一 (279)
犬視床下部破壊時における上頸神経節神経細胞の微細構造変化について	長野隆行 (329)
胆汁組成よりみた迷走神経切断術式に関する批判	小牧勝彦 (339)
胃癌患者に対する BCG 癌非特異的免疫療法	塩田隆三, 他 (356)
ラット胃における内分泌および外分泌細胞に関する電子顕微鏡的検索 III. 迷走神経切離の外分泌および内分泌細胞におよぼす影響	佐野正博 (369)
脾全切除犬に対するグルカゴン投与の血糖値に及ぼす影響について	西村一郎 (390)
高度肺高血圧症を伴う心室中隔欠損症根治手術の臨床的研究 とくに手術成績ならびに術後血行動態の推移に関する年令別検討	神崎義難 (437)
実験的斜頸における中枢モノアミン神経系の蛍光組織化学的研究	石川正恒 (457)
胆石形成から見た化学的成分食	谷村弘, 他 (471)

## 臨 床

大腿骨顆部の骨軟骨骨折（外因性）	榑田喜三郎, 他 (28)
髄液短絡術における On-off Valve の効用について	山崎 駿, 他 (36)
悪性腫瘍脊髄転移に対する椎弓切除術	服部 彰 (175)
末梢神経損傷の統計的観察	平沢泰介, 他 (123)
17病院における胆石症の集計（第1報）	長瀬正夫, 他 (222)
股関節症に対するムコ多糖多硫酸エステル関節内注入	田中清介, 他 (289)
水溶性造影剤による脳室撮影とミエログラフィー	小山素麿, 他 (298)
体外循環中における抗生物質の投与法に関する検討	山田公弥, 他 (311)
23病院における胆石症の集計（第2報）	長瀬正夫, 他 (483)

## 症 例

先天性短結腸症に対し結腸形成術を施行した2症例	千葉庸夫, 他 (40)
先天性限局性結腸拡張症の1例	千葉庸夫 (45)
膝窩動脈血行再建症例 Popliteal Artery	
Entrapment Syndrome 及び Buerger 病	岩橋寛治, 他 (227)
胆のう捻転症の2例	塩田隆三, 他 (319)
シヤント感染の治療：難治性脳室炎に対する	
脳室ドレナージの脳室胃室吻合術への変換	森 惟明, 他 (398)
呼吸障害（RDS）を伴う体重1,710グラムの未熟児動脈管閉存症の	
手術治験例, 及び文献考察	横田通夫, 他 (401)
胆 石 イ レ ウ ス	笠原 洋, 他 (487)
腸重積を伴った回腸原発ホジキン氏病の1例	鎌田寿夫, 他 (498)
第2回近畿脳腫瘍研究会	(181)
第3回近畿脳腫瘍研究会	(324)
第7回中国四国脳神経外科談話会抄録	(192)
第78回岐阜外科集談会	(233)
第79回岐阜外科集談会	(235)
昭和50年京都大学脳神経外科学教室同門会集談会	(427)

## CONTENS OF VOLUME 45

Etiology and Treatment of Gallstone .....	MASAO NAGASE	( 1 )
Initiating Factors of Choleserol Gallstones and Pancreatitis.....	HIROSHI TANIMURA, et al.	( 3 )
Neurochemical Studies of Reactive Proliferative Glial Cells in Injured Rat Brain, and Their Relations to Blood-Brain Barrier.....	HIROTSUGU SAMESHIMA	( 17 )
Osteochondral Fracture (exogenous) of the Femoral Condyle.....	KISABURO SAKAKIDA, et al.	( 28 )
Efficiency of the On-off Valve in the Cerebrospinal Fluid Shunt .....	SHUN YAMASAKI, et al.	( 36 )
Two Cases of Coloplasty for Congenital Short Colon.....	TSUNEO CHIBA, et al.	( 40 )
Congenital Segmental Dilatation of the Colon.....	TSUNEO CHIBA	( 45 )
Some Considerations on Microneurorrhaphy.....	KIYOSHI YAMAMOTO	( 49 )
Pathogenesis of Cervical Spondylotic Myelopathy —Experimental and Clinical Studies— .....	SEKIO TOMINAGA	( 51 )
An Attempt of Quantitative Assessment of the Intracardiac Shunts Using Radiocardiogram.....	MICHO YOKOTA	( 69 )
Operative Results and Postoperative Hemodynamic Results in Total Correction of Tetralogy of Fallot —With special reference to patient's age and enlargement of right ventricular outflow tract— .....	HIDETAKA OKU	( 87 )
Pathophysiological Studies on the Early Stages of Intraventricular Hemorrhages in Dogs.....	TOYO KOBAYASHI	( 109 )
Experimental Evaluation of Assisted Extracorporeal Circulation Using LANGE-EDWARDS Membrane Oxygenator for Induced Acute Pulmonary Insufficiency .....	RYUICHI KAKE	( 123 )
An Experimental and Clinical Study on Flexion Movement of the Finger —Changes in Flexion Movement Related to the Structural Impairment— .....	YASUO UERA	( 134 )
Laminectomy for Spinal Cord Compression from Metastatic Tumor .....	AKIRA HATORI	( 175 )
Cancer Immunotherapy with BCG .....	RYUZO SHIODA	( 199 )
An Experimental Study on the Proliferation of Epiphyseal Cartilage Cells After Partial Resection of Epiphyseal Plate .....	KISABURO SAKAKIDA, et al.	( 201 )
Statistical Study on Peripheral Nerve Injury .....	YASUSUKE HIRAZAWA, et al.	( 213 )
A Collective Review of the 336 Cases of Gallstones Operated on at 17 Hospitals —The First Report— .....	MASAO NAGASE, et al.	( 222 )
Reconstruction of the Occluded Popliteal Artery —Popliteal Artery Entrapment Syndrome and Buerger's Disease— .....	KANJI IWAHASHI, et al.	( 227 )
Diagnosis of Central Nervous System Anomalies in utero.....	KORFAKI MORI	( 241 )
Electron Microscopic Studies on Endocrine Cells and Exocrine Cells in Gastric Mucosa of Rats I. Endocrine Cells in Gastric Mucosa of Fasting Rats.....	MASAHIRO SANO	( 243 )
Electron Microscopic Studies on Endocrine Cells and Exocrine Cells in Gastric Mucosa of Rats II. Morphological Changes in Chief Cells and Parietal Cells After Fasting, Refeeding, and Electric Vagal Stimulation.....	MASAHIRO SANO	( 265 )

Studies on Extragastric Gastrin: Its Sceretion Mechanism .....	TOICHI SOGAME	(279)
Intraarticular Injection of Mucopolysaccharide Polysulfuric Acid		
Ester in the Treatment of Osteoarthritis of the Hip Joints .....	SEISUKE TANAKA, et al.	(289)
Ventriculography and Myelography with		
Water-Soluble Contrast Media .....	TSUNEMARO KOYAMA, et al.	(298)
Studies on Administration of Cephalosporin in		
Extracorporeal Circulation .....	KINYA YAMADA, et al.	(311)
Torsion of the Floating Gall Bladder.....	RYUZO SHIODA, et al.	(319)
Ultrastructural Alterations of the Nerve Cell Bodies		
in the Dog Superior Cervical Ganglion, Following		
Surgical Destruction of the Hypothalamus .....	TAKAYUKI NAGANO	(329)
Comparative Study on Vagotomy Procedures in Relation		
to Biliary Composition .....	KATSUHIKO KOMAKI	(339)
Cancer Immunotherapy with BCG for Patients with Stomach Cancers .....	RYUZO SHIODA, et al.	(356)
Electron Microscopic Studies on Endocrine Cells and		
Exocrine Cells in Gastric Mucosa of Rats		
III. Effects of Vagotomy on Exocrine Cells and Endocrine Cells .....	MASAHIRO SANO	(369)
Effect of Glucagon Administration on Blood Glucose		
Level in Totally Depancreatized Dogs .....	ICHIRO NISHIMURA	(390)
Treatment of Shunt Infection : Conversion of External Ventricular		
Drainage of Gastric Shunt for Persistent Ventriculitis .....	KORIAKI MORI, et al.	(398)
Successful Ligation of the Patent Ductus Arterious in a 1,710-gram		
Premature Baby with RDS and the Review of the Literature .....	MICHIYO YOKOTA, et al.	(401)
Zukunft und Ausblick der Gefässchirurgie .....	KIKUO MOHRI	(435)
Clinical Studies on Results of Repair of Ventricular Septal		
Defect Associated with Severe Pulmonary Hypertension		
—Mortality and Hemodynamic Changes in Various Groups— .....	YOSHIO KANZAKI	(437)
Fluorescence Histochemical Study of the Central Monoaminergic		
Neuron System on Experimental Torticollis in The Cat .....	MASATSUNE ISHIKAWA	(457)
Chemically Defined Diets from Viewpoint of Formation of Gallstones.....	HIROSHI TANIMURA, et al.	(471)
A Collective Review of the 796 Cases of Gallstones		
Operated on at 23 Hospitals		
—The Second Report— .....	MASAO NAGASE, et al.	(483)
Gallstones Ileus .....	YOJI KASAHARA, et al.	(487)
Primery Hodgkins Disease of the Ileum with Intussusception .....	TOSHIO KAMATA, et al.	(498)

## 第 45 卷 索引

## 人 名 索 引

## A

阿部 達彦…………… 234, 239  
 足立 泰…………… 236  
 阿美古征生…………… 197  
 青木 秀夫…………… 193, 197  
 青木 秀暢…………… 196  
 青嶋 実…………… 311  
 安藤 協三…………… 428  
 安藤 充晴…………… 233  
 安藤 隆…………… 233, 236  
 浅倉 義弘…………… 40

## B

馬場 清…………… 401  
 馬場 国男…………… 233  
 坂東 康生…………… 498  
 伴 貞彦…………… 433  
 伴 邦充…………… 234

## C

千葉 庸夫…………… 40, 45  
 中条 武…………… 233, 239  
 中条 節男…………… 193

## D

大頭 信義…………… 311  
 土井 章弘…………… 194  
 土井 達郎…………… 235

## F

藤野 秀策…………… 192  
 藤谷 健…………… 324  
 深井 博志…………… 193  
 福田 安雄…………… 193  
 福間 誠之…………… 182, 324  
 福光 太郎…………… 427  
 古瀬 清次…………… 181, 428, 430  
 古田 知久…………… 196  
 伏屋 芳文…………… 401

## G

玄 貴雄…………… 192  
 郷間 徹…………… 324  
 五郎川正己…………… 227  
 後藤 明彦…………… 233

## H

花北 順哉…………… 298, 431  
 半田 肇…………… 183, 298, 325, 398  
 半田 讓二…………… 298  
 原 慶文…………… 498  
 長谷川 洋…………… 326  
 端 和夫…………… 428  
 服部 彰…………… 175  
 初音嘉一郎…………… 234  
 初音三重子…………… 234  
 早川 徹…………… 325, 326  
 林 竜男…………… 194  
 林 勝知…………… 233, 237  
 日比野弘道…………… 193, 195, 197  
 日笠 頼則…………… 401, 471  
 日野 輝雄…………… 233, 239  
 東 健一郎…………… 197, 433  
 東 修治…………… 236, 237  
 平沢 泰介…………… 213  
 平山 昭彦…………… 36, 427  
 広瀬 旭…………… 235, 239  
 広谷 速人…………… 327  
 堀 浩…………… 181  
 堀 正治…………… 326  
 堀江 正宣…………… 235, 239  
 星野 列…………… 195  
 細野 和久…………… 237

## I

井原 清…………… 432  
 井上 律子…………… 234, 238  
 池田 卓也…………… 325  
 今村 健…………… 239

石原 浩	234, 238
石川純一郎	431
石川 正恒	457
石川 進	193, 195, 197
板倉 徹	183
伊藤 鎮雄	28
伊藤 隆夫	233, 236
伊藤 鉄夫	289
岩橋 寛治	227
岩島 康敏	233
岩槻 清	192
岩堤 慶明	236

## J

陣内皓之祐	430
-------	-----

## K

角谷 仁	487
角 隆一	123
景山 敏明	192
垣田 清人	182, 324
鎌田 寿夫	471, 483, 498
神川喜代男	184, 325
神山 悠男	192
神崎 義雄	437
蟹本 雄右	238
唐沢 淳	182, 428, 430
葛西 森夫	40
笠原 洋	319, 356, 487
檜木 良友	235, 239
片木 良典	194
片山 真男	432
加藤 正夫	236
加藤 俊彦	235
加藤 康夫	234, 238
川上 伸	193
川村純一郎	428
川迫 堯之	234, 239
河合 寿一	235
河田 幸道	235, 239
河田 良	237
河原崎 篤	324
河村 悌夫	432
菊池 晴彦	181, 428, 430

木崎 孝彦	324
岸 政次	183
北岡 保	195
北村 純司	36
京井喜久男	181
京極 方久	326
小林 君美	234, 238
小林 東洋	109
小泉 広	487
小久保 武	45
小牧 勝彦	339
小山 素磨	298, 431
児島 駿	324
児玉 安紀	193
近藤 明恵	298, 431
近藤 祐之	430
久保田秀夫	487
熊原 雄	197
国枝 篤郎	237, 239
栗山 学	235, 239
黒川 賢	181
日下 和昌	194

## M

牧野督太郎	213
牧田 泰正	433
丸橋 和弘	498
松田 香苗	319, 356
松田 昌之	427
松田 光彦	311
松井 滋	181
松本 圭蔵	194, 196
松本 博城	430
松本 悟	36, 326, 427
松本 由朗	183
松村 浩	432
松村 理司	238
松村茂次郎	193
松永 守雄	433
松波 英一	235, 236
松岡 好美	324
松浦 昭吉	235
三尾 六蔵	234, 239
三島 隆生	183

三島 泰彦	324
三輪 勝	233, 236
三輪 佳宏	427
三谷 哲美	432
満田 浩二	195
宮本 誠司	181
宮田 信熙	195
宮本 亮一	237
宮下 剛彦	235
水川 典彦	196
最上平太郎	197, 326
森 信太郎	197
森 惟明	241, 398
森本 益雄	196
毛利喜久男	435
本藤 秀樹	431
村上 昌穂	193
村岡 隆介	401
村瀬 恭一	233
村田 高穂	427
村田 真司	227
室家 大久	3, 398

## N

鍋島 祥男	428
内藤 正志	193
長野 隆行	329
長沢 史朗	433
長瀬 正夫	1, 3, 222, 471, 483
長尾 勇	325
中川 秀光	326
中川 俊文	195
中野 博行	401
中納 誠也	234, 238
中田 陽造	184, 326
中谷 勝也	213
名和 光博	233, 237
西本 詮	192, 196
西村 一郎	390
西村 周郎	181, 324
西浦 巖	430
西浦 常雄	235
野村 恭博	235
野村 義信	319, 356

野坂 芳樹	194
-------	-----

## O

大鐘 稔彦	498
大橋 広文	233, 237
大熊 晟夫	233, 235, 236
大町 純一	182
大前 勝正	236, 237
大西 英之	182, 431
大西 俊輝	325
大島 英雄	181
小田良之輔	213
小原 進	194
小野 一乗	193
太田 吾郎	235
岡 益尚	183
岡本 忠雄	236, 237
岡本 頼治	196
尾形 誠宏	433
尾藤 昭二	324
奥 秀喬	87
鬼東 惇義	233
芋坂 邦彦	36, 427

## S

雑賀 俊夫	236
斎藤 義一	193
佐藤 慎一	433
榑 寿右	181, 428, 431
榑 三郎	324
榑田喜三郎	28, 201
坂 義人	235
坂井 昇	234, 235, 238, 431
坂田 一記	233, 235, 237, 431
坂田 康二	487
鮫島 寛治	17
佐野 正博	243, 265, 369
佐々木良造	182, 324
佐治 董豊	236, 237
佐藤 博美	36
佐藤 宏二	192
笹岡 郁乎	235
関野 昌宏	233, 237
瀬戸山元一	222, 471, 483



渋谷 智顕	234, 239
四方 義朗	213
敷波 晃	233, 236
島 健	193
島田 脩	233, 236
嶋津 良一	235
清水鴻一郎	430
清水 敏	433
清水 澄太	401
清水 礼寿	401
塩田 隆三	3, 199, 319, 356
塩見 壮司	181
白羽 誠	487
白馬 明	181, 324
白瀧 邦雄	326
十亀 東一	279
曾我部紘一郎	192, 194, 196
染田 邦幸	432
操 厚	236, 237
須田 金弥	433
須原 邦和	234, 239
鈴木 貞夫	235, 236

## T

田辺 広己	487
田苗 英次	401
田中 清介	289
田中 千凱	233, 236
種村 広己	236
谷村 弘	3, 222, 471, 483
谷本 邦彦	194
高井 清一	233, 236
高橋 徳	181
高橋 伸明	193
高橋 裕	227
竹腰 知治	233, 239
竹中 正文	3, 222, 483
竹友 重信	182, 234
武内 重二	183, 325
滝 和郎	182, 431
滝谷 博志	233
龍田 憲和	311
鄭 漢 彬	235
寺野 允将	183

徳力 康彦	427
富永 積生	51
埤本 勝司	427
遠部 英昭	195
遠山 光郎	182
土屋 十次	233, 237
辻本 壮	181, 324
土本 正治	192
津田 耕平	183

## U

内田 泰史	183, 325
内海庄三郎	181
上羽 康夫	134
上田 伸	192, 194, 196
上田 聖	182
上松 治隆	233
梅田 昭正	192
梅村 博也	487
魚住 徹	193, 197

## W

湧田 幸雄	182, 431
和田 英一	235, 236

## Y

山田 弘	234, 235, 236, 238
山田 公弥	311, 431
山森 積	234, 238
山本 潔	49
山本 真史	239
山本 悟	233
山本 豊城	433
山崎 駿	36, 427
山里 有男	234, 238
山下 純宏	183
山下 文治	201, 325
安永 敏美	227
横田 通夫	69, 401
横須賀達也	234
横山 幸夫	239
吉田 敏生	35, 236
吉田 泰二	2, 431

吉田 康成..... 428  
吉岡 純二..... 194

善家 迪彦..... 432  
米沢 猛..... 182

## 物 件 索 引

<b>A</b>		<b>J</b>	
アカラシヤ	236	実験的斜頸	457
悪性脳腫瘍	433	塵肺気腫	237
悪性シュワン細胞腫	234	上頸神経節神経細胞	338
鞍結節部	197	縦隔奇形腫	238
<b>B</b>		十二指腸狭窄	236
バルサルバ洞動脈瘤破裂	234	重症頭部外傷	195, 238
BCG 癌非特異的免疫療法	368	<b>K</b>	
BCG 癌免疫療法	199	下垂体腺腫	196
膀胱弁	235	蛍光組織化学	457
<b>C</b>		頸動脈海綿静脈汎癩	195
肘部前腕完全切断	237	頸椎症性脊髄症	68
虫垂粘液腫	237	血管外科	435
中枢神経奇形	241	血管吻合部	428
<b>D</b>		血液脳関門	17
大腸ポリホーシス	233	嫌色素性下垂体腺腫	326
動静脈奇形	193	巨大脳膿瘍	196
<b>E</b>		強力集束超音波	183
Essential Fatty Acid	6	急性呼吸不全	123
<b>F</b>		股関節症	297
ファロー四徴症根治手術	106	辜丸上皮嚢腫	235
<b>G</b>		高度肺高血圧症	456
外傷性視床突起下内頸動脈瘤	193	高血圧性脳出血	196
<b>H</b>		抗生物質投与方法	311
發育不全腎	239	硬膜下血腫	194
平滑筋肉腫	238	呼吸障害 (RDS)	425
壁細胞	265	骨端軟骨細胞	212
非外傷性肝出血	239	骨軟骨骨折	35
補助循環	123	骨折の治療	327
ホジキン氏病	498	後頭蓋窩三叉神経鞘腫	193
<b>I</b>		コレステロール系胆石	1, 15
胃分泌細胞	243	くも膜嚢胞	431
胃外性ガストリン	279	<b>M</b>	
<b>J</b>		末梢神経損傷	221
<b>K</b>		迷走神経切断術	355
<b>L</b>		迷走神経切離	369
<b>M</b>		未熟児動脈管開存症	425
<b>N</b>		<b>N</b>	
<b>O</b>		難治性脳室炎	398

尿道形成術	235
乳児慢性硬膜下血腫	194
脳循環	427
脳腫瘍化学療法	326
脳室出血	109
脳室胃吻合術	398
脳内 Dermoid Cyst	181
ヌードマウス	325

## R

レーザー	184
Radiocardiogram	69
燐脂質代謝	19

## S

脊髄疾患	431
先天性限局性結腸拡張症	47
先天性短結腸症	44
紫外部レーザー	325
膝窩動脈血行再建	227
主細胞	265
手指屈曲運動	134
小児外科の統計	239
小児外傷性硬膜外血腫	430
小腸悪性腫瘍	233
小腸腸瘍	236
消化管出血	233
神経縫合術	49

神経管外転移	235
心内短絡	86
心室中隔欠損症	456
組織培養	182
総胆管原発胆石	2
水溶性造影剤	298
膝全切除術	390

## T

体外循環	311
多発性消化管穿孔	233
胆石イレウス	487
胆石形成	471
胆石症	222
胆石症集計	483
胆のう捻転症	323
Tetralogy of Fallot	87
転移性脳腫瘍	182, 324
椎弓切除術	180
痛風	235

## Z

頭蓋咽頭腫	197
髄液産生	433
髄液短絡術	36
髄液線溶活性	428
前大脳動脈瘤	192
前大脳動脈奇形	192

## Author Index

- A**
- Aoshima, Minoru .....311  
Asakura, Yoshihiro .....40
- B**
- Baba, Kiyoshi ..... 401  
Bando, Yasuo ..... 498
- C**
- Chiba, Tsuneo..... 40, 45
- D**
- Daito, Nobuyoshi..... 311
- F**
- Fuseya, Yoshifumi..... 401
- G**
- Gorokawa, Masami..... 227
- H**
- Hanakita Junya ..... 298  
Handa, Hajime..... 183, 298, 325, 398  
Handa, Jyoji..... 298  
Hara, Keibun.....498  
Hattori, Akira ..... 175  
Hikasa, Yorinori..... 401, 471  
Hirasawa, Yasusuke ..... 213  
Hirayama, Akihiko ..... 36, 427  
Hirotani, Hayato ..... 327
- I**
- Ishikawa, Masatsune ..... 475  
Ito, Shizuo ..... 28  
Ito, Tetsuo.....289  
Iwahashi, Kanji ..... 227
- K**
- Kadotani, Hitoshi.....487  
Kaku, Ryuichi .....123  
Kamata, Toshio..... 471, 483, 498  
Kanzaki, Yoshio ..... 437  
Kasai, Morio ..... 40
- Kasahara, Yoh ..... 319, 356, 487  
Kitamura, Junji..... 63  
Kobayashi, Toyo..... 109  
Koizumi, Hiroshi..... 487  
Kokubo, Takeshi ..... 45  
Komaki, Katsuhiko..... 339  
Koyama, Tsunemaro..... 298, 431  
Kondo, Akinori ..... 298, 431  
Kubota, Hideo ..... 487
- M**
- Makino, Tokutaro ..... 231  
Maruhashi, Kazuhiro..... 498  
Matsuda, Kanæ..... 319, 356  
Matsuda, Mitsuhiko ..... 311  
Matsumoto, Satoshi.....36, 326, 427  
Mori, Koreaki..... 241, 398  
Mohri, Kikuo.....435  
Muraoka, Ryusuke..... 401  
Murata, Shinji..... 227  
Muroya, Hirohisa ..... 3, 398
- N**
- Nagano, Takayuki ..... 329  
Nagase, Masao..... 1, 3, 222, 471, 483  
Nakano, Hiroyuki.....401  
Nakatani, Katsuya..... 231  
Nishimura, Ichiro ..... 390  
Nomura, Yoshinobu ..... 319, 356
- O**
- Ogane, Toshihiko.....498  
Oda, Ryonosuke ..... 231  
Oku, Hidetaka ..... 87  
Osaka, Kunihiko ..... 36, 427
- S**
- Sakakida, Kisaburo..... 28, 201  
Sakata, Kohji ..... 487  
Sameshima, Hirotsugu..... 17  
Sano, Masahiro ..... 243, 265, 369  
Sato, Hiromi ..... 36  
Setoyama, Motoichi..... 228, 471, 483

Shikata, Yoshiro .....	213
Shimizu, Sumita .....	401
Shimizu, Reiju .....	401
Sioda, Ryuzo .....	3, 199, 319, 356
Shiraha, Sei .....	487
Sogame, Toichi .....	279

### T

Tanabe, Hiromi .....	487
Tanae, Hidetsugu .....	417
Tanaka, Seisuke .....	289
Tanimura, Hiroshi .....	3, 222, 471, 483
Takahashi, Hiroshi .....	227
Takenaka, Masafumi .....	3, 222, 483

Tatsuta, Norikazu .....	331
Tominaga, Sekio .....	51

### U

Ueba, Yasuo .....	134
Umemura, Hiroya .....	487

### Y

Yamada, Kinya .....	311, 431
Yamamoto, Kiyoshi .....	49
Yamasaki, Syun .....	36, 427
Yamashita, Bunji .....	201, 325
Yasunaga, Toshimi .....	227
Yokota, Michio .....	69, 401

## Subject Index

- A**
- Acridine orange .....184  
 A-C Saphenous vein bypass graft .....234  
 Acute abdomen.....319  
 Acute pancreatitis ..... 10  
 Adenomatous polyp.....236  
 Agenesis of colon..... 43  
 Amniocentesis .....241  
 Anterior cerebral artery .....192  
 Anterior sacral meningocele .....431  
 Antisiphon Valve..... 36  
 Appearance time ..... 70  
 Assimilation index .....390  
 Autoradiography .....201
- B**
- BCG .....356  
 Bile component.....343  
 Bilirubin stones .....483  
 Bile specimen .....340  
 Bleomycin .....197  
 Blood-Brain-Barrier ..... 17  
 Brawn-Sequard Syndrome ..... 64  
 Bronchopulmonary dysplasia .....401  
 Build-up time ..... 70  
 Burger's disease .....227  
 Buttered child .....327
- C**
- Cancer immunotherapy.....199, 356  
 Cardiopulmonary bypass ..... 88  
 Carotid-cavernous fistula .....195  
 Cefazolin .....311  
 Cell population kinetics .....201  
 Central nervous system anomalies .....241  
 Cephalosporin .....311  
 Cerebrospinal fluid circulation .....109  
 Cerebrospinal shunt..... 36  
 Cervical spondylotic myelopathy .....51  
 Chenodeoxycholic acid .....2, 4, 5  
 Chief cells .....265  
 Cholelithiasis .....222
- Cholesterol Cholelithiasis..... 3  
 Cholinergic control mechanism .....425  
 Classification of gallstones .....222  
 Clear cell Carcinoma .....187  
 Clivus teningioma .....181  
 Clivus meningioma .....325  
 CNI $\bar{c}$  BCG .....359  
 Coloplasty .....40  
 Compression nerve paralysis .....213  
 Congenital short colon.....40  
 Cross-sectional area index of  
     pulmonary annulus.....90  
 Curling ulcer.....233
- D**
- Decompression laminectomy.....175  
 Degree of pulmonary vascular disease.....447  
 Dermoid cyst.....181  
 Diameter of pulmonary valve ring.....88  
 Dimer-X .....298  
 Distal pulley .....135  
 Duodenal alkalization .....279
- E**
- Ectopia cordis .....238  
 Electric vagal stimulation.....265  
 Endocrine cells.....243, 369  
 Enterochromaffin cell.....258  
 Epineural suture ..... 49  
 Epiphyseal cartilage .....201  
 Exocrine cells .....369  
 Experimental epiphyseal injuries .....201  
 Experimental lithogenic diet..... 6  
 External ventricular drainage.....398  
 Extracorporeal circulation.....311  
 Extragastric gastrin .....279  
 Extravasation.....196
- F**
- Femoral condyle ..... 28  
 $\alpha$ -Fetoprotein .....183  
 Fibrosarcoma.....237, 433  
 Finger movement.....134

Floating gall bladder .....	319
Fluorescence histochemical study .....	457
Funicular suture .....	49

**G**

Gallstone ileus .....	487
Gastrointestinal hormone .....	243
G-Cell .....	279
Gelfoam .....	193
Glia fibrils .....	19
Glioblastoma .....	325
Glioma .....	182
Gliosid .....	17
Glucagon .....	390
Gold coating .....	428
Growing skull fracture .....	194

**H**

Hank's solution .....	11
Harvey Cushing society .....	197
Hirschsprung's disease .....	45
Hodgkin's disease .....	498
Human chorionic gonadotropin .....	427
Hydrocephalus .....	398
Hypersensitive pneumonitis .....	238
Hypothalamus .....	329
Hypothermic procedure .....	440

**I**

Iatrogenic nerve injury .....	213
Immunoglobulins .....	356
Imperforate anus .....	40
Incorporation .....	17
Infundibulectomy .....	88
Interhemispheric approach .....	192
Intraarticular injection .....	289
Intracardiac shunt .....	69
Intracranial pressure .....	109
Intraneural topography .....	49
Intussusception in adult .....	498
Intraventricular hemonhage .....	109
Isochromatic lines .....	54

**L**

Laminectomy .....	175
-------------------	-----

Left-to right shunts .....	70
Lithocholic acid .....	5, 6
Lithogenic bile .....	1
Lysin-cephalose affinity chromatography .....	428
Lysosome .....	329

**M**

Malignant meningioma .....	433
Meglumine iocarmate .....	298
Membrane oxygenater .....	128
Meningoen cephalocele .....	432
Mg-dependent ATP ase .....	25
Microangiography .....	57
Midbrain .....	457
Middle pulley .....	135
Moloney sarcoma virus .....	326
Monoamine neuron system .....	457
Mouse glioma .....	183
Moya-moya disease .....	430
Mucopolysaccharide .....	289
Multipurpose valve .....	37
Myelography .....	298

**N**

Neurolysis .....	213
Neurorrhaphy .....	213
Neuropile .....	19
Nerve grafting .....	50
N-K-dependent ATPase .....	25
Non-occlusive mesenteric vascular disease .....	435
Nuclear icterus .....	45

**O**

Ommaya resrvoir .....	432
Oncocyte .....	326
Optic nerve tumor .....	181
Optimum flow rate .....	123
Osmotic flow .....	433
Osteoarthritis of the hip .....	289
Osteochondral fracture .....	28
Osteochondral junction .....	33

**P**

PA/AO diameter ratio .....	87
----------------------------	----



Pancreatitis .....	3
Pancreatitis in cholelithiasis .....	483
Parietal cells .....	265
Patent ductus arteriosus .....	401
Peak radio activity .....	70
Pericardial outflow patch .....	89
Peripheral nerve injury .....	213
Persistent primitive cervical segmental artery .....	193
Phospholipase A .....	13
Photo-elastic experiments .....	54
Photosensitizer .....	325
Pigment stones .....	11
Popliteal artery entrapment syndrome .....	227
Precordial dilution curve .....	77, 81
Premature baby .....	401
Primitive hypoglossal artery .....	193, 243
Profound hypothermia .....	88
Prophospholipase A .....	13
Prophylactic administration of antibiotics .....	311
Proximal pulley .....	135
Pulmonary dilution curve .....	77, 81
Pulmonary hypertension .....	95, 437
Pulmonary insufficiency .....	93, 123
Pulmonary vascular disease .....	437

## R

Radiocardiogram .....	69
Radioimmunoassay .....	279
Rapid high-dose radiation therapy .....	324
Rat chow diet .....	6
Recto-urinal fistula .....	40
Redundant nerve roots syndrome .....	431
Renal aplasia .....	239
Respiratory distress syndrome .....	401
RI-Cisternography .....	427
Right-to-left shunt .....	82
RV/AO systolic pressure ratio .....	91
RV-PA systolic pressure gradient .....	92

## S

Scintillation counter .....	69
Segmental dilatation of the Colon .....	45

Selective gastric vagotomy .....	339
Shunt infection .....	398
Spinal cord compression .....	175
Stasis stone .....	2
Subdural hematoma .....	429
Superior cervical ganglia .....	329
Survival time .....	123
Synthetic diet .....	471

## T

T-cells .....	356
Tetralogy of Fallot .....	87
Tide mark .....	33
Torticollis .....	457
Totally depancreatized dogs .....	390
Traffic accidents .....	213
Transplantation of osteochondral fragments .....	34
Transsphenoidal approach .....	196
Trapping .....	193
Truncal vagotomy .....	339
T-tube drainage .....	222
Tube feeding .....	471
Tumor specific antigens .....	199

## U

Useful life .....	324
-------------------	-----

## V

Vagotomy .....	339
Vasoglia unit .....	17
Veno-arterial perfusion .....	123
Ventral tegmental area .....	457
Ventricular septal defect .....	437
Ventriculogastric shunt .....	398
Ventriculitis .....	398
Ventriculography .....	298
Viral carcinogenesis .....	84

## W

Water-soluble contrast medium .....	298
-------------------------------------	-----

## Y

Yb DTPA cisternography .....	195
------------------------------	-----

## Initiating Factors of Cholesterol Gallstones and Pancreatitis

HIROSHI TANIMURA, RYUZO SHIODA, HIROHISA MUROYA,

MASAFUMI TAKENAKA and MASAO NAGASE

The 2nd Surgical Department, Kyoto University School of Medicine (Director: Prof. Dr. YORINORI HIKASA) Sakyo-ku, Kyoto, Japan.

Arch. Jap. Chir., 45 (1), 3~16, 1976.

The initiating factors of cholesterol gallstones were studied and a large intake of highly refined carbohydrate such as sugar and of animal fats such as butter fat containing a large amount of short or medium chain and saturated fatty acids, and a deficient intake of vegetable fibres were incriminated.

In addition, the mechanism of the syntropy of acute pancreatitis with cholesterol gallstones were elucidated.

京都大学医学部外科学教室第2講座 谷村 弘, 志田隆三, 室家大久, 竹中正文, 長瀬正夫

## Neurochemical Studies of Reactive Proliferative Glial Cells upon Injured Rat Brain, and their Relations to Blood-Brain-Barrier

HIROTSUGU SAMESHIMA

Department of Neurosurgery, School of Medicine, Toho university. (Director : Prof. SABURO. AWAZU) Ota-ku, Tokyo, Japan.

Arch. Jap. Chir., 45 (1) 17~27, 1976.

The metabolic specificity of reactive proliferative glial cells produced by subpial undercutting of unilateral frontal lobe of rat brain, especially on the functional feature of blood-brain-barrier was studied morphologically and biochemically.

The basic morphological structure of the B.B.B., so-called vasoglia unit, was kept almost normally in the relation to these structure of the tissue after the completion of gliosis.

Biochemically, the reactive proliferative glial cells were merely regarded as the cicatricial tissue, rather the gliosis itself had some functional specificity in the B.B.B.

## Osteochondral Fracture (exogenous) of the Femoral Condyle

KISABURO SAKAKIDA, SHIZUO ITO

Department of Orthopedic Surgery, Kyoto Prefectural University of Medicine (Director : Prof. Takefumi Morotomi) Kamigyō-ku, Kyoto, Japan.

Arch. Jap. Chir., 45 (1), 28~35, 1976.

We have experienced two cases of osteochondral fracture (exogenous). One case is a fracture of the medial femoral condyle in a young subject. The other case is a fracture of the lateral femoral condyle in an aged subject. In the juvenile case, a wedge-shaped osteochondral fragment was found on the weight-bearing surface with minor displacement, and treated conservatively. In the older case, large fragments accompanied by a thin subchondral bone on the weight-bearing surface were found, with a major displacement. The fragment was reduced and fixed by a screw with a favorable course in both cases. Transplantation of osteochondral fragment was also discussed.

京都府立医科大学整形外科教室 榊田喜三郎, 伊藤鎮雄

## Efficiency of the On-off Valve in the Cerebrospinal Fluid Shunt

SYUN YAMASAKI, HIROMI SATO, JUNJI KITAMURA, AKIHIKO HIRAYAMA, KUNIHICO OSAKA, and SATOSHI MATSUMOTO

Department of Neurological Surgery, Kobe University School of Medicine (Director: Prof. Dr. SATOSHI MATSUMOTO) Ikuta-ku, Kobe, Japan.

Arch. Jap. Chir., 45 (1), 36~39 1976.

Efficiency of the use of the on-off valve in the cerebrospinal fluid shunt was described. This valve allowed the surgeon to keep either open or closed condition for shunting system by percutaneous manipulation. The main purpose of this valve was to prevent the post-shunt subdural hematoma and to reduce the low pressure syndrome as headache etc., when the patient was upright. From our experiences of four cases with the cerebrospinal fluid shunt in so-called normal pressure hydrocephalus, obstructive hydrocephalus due to aqueductal compression and infantile hydrocephalus, the indication, the operative technique, and the results were discussed.

## Two Cases of Coloplasty for Congenital Short Colon

TSUNEO CHIBA, MORIO KASAI, YOSHIHIRO ASAKURA

The 2nd Surgical Department Tohoku University, School of Medicine, Sendai, Japan, and The Division of Pediatric Surgery, Department of Surgery, Oh-hara General Hospital, Fukushima, Japan.

Arch. Jap. Chir., 45 (1), 40~44 1976.

Coloplasty with dilated short colon was made in two patients of congenital short colon. The postoperative course of these patients were comparatively good. Since the histological findings are almost normal and the function of the colon may be preserved, coloplasty is worth trying.

東北大学医学部第2外科学講座 千葉庸夫 葛西森夫  
大原総合病院小児外科 浅倉義弘

6

## Congenital Segmental Dilatation of the Colon

TSUNEO CHIBA, TAKESHI KOKUBO

The 2nd Department of Surgery, Tohoku University School of Medicine, and The 1st Department of Pathology, Tohoku University School of Medicine, Sendai, Japan.

Arch. Jap. Chir., 45 (1) 45~47 1976.

Congenital segmental dilatation is comparatively uncommon disease. We have experienced a case in whom an autopsy was performed at Tohoku University Hospital and a segmental dilatation of the colon was found. This is a report of a case with pathological and histological findings.

## Pathogenesis of Cervical Spondylotic Myelopathy

Experimental and Clinical Studies-

SEKIO TOMINAGA

Department of Orthopedic, Shimane Prefectural Central Hospital.  
Izumo, Shimane, Japan.

Arch. Jap. Chir., 45 (2), 51~68, 1976.

Department of Orthopedic Surgery, Shimane Prefectural Central Hospital.

Experimentally, the dynamic nature and intensity of the cervical cord in cross-section were measured, and also the stress distribution in cord compression was analyzed by the photo-elastic method.

Discussing the relationship between the stress distribution and the pathways of the blood vessels in the cord, it was presumed that the selective cord lesion in this condition would be produced by the stresses and the subsequent ischemia in the cord.

It is concluded that the hypothesis presumed experimentally could be accepted even clinically, resulting from the radiological and neurological analysis of the myelopathic cases.

島根県立中央病院整形外科 富永積生

8

## An Attempt of Quantitative Assessment of the Intracardiac Shunts using Radiocardiogram

MICHIO YOKOTA

The 2nd Department of Surgery, Kyoto University School of Medicine.  
(Director : Prof. Dr. YORINORI HIKASA) Sakyo-ku, Kyoto, Japan.

Arch. Jap. Chir., 45 (2), 69~86, 1976.

Manual analysis of the radioisotope dilution curves without the assistance of analog computer simulation for the quantitative assessment of the cardiac left-to-right shunts was attempted. Among all parameters used,  $T_{1/2}/BT$  (half-time divided by build-up time) of the pulmonary dilution curves gave the best result with a good correlation between  $T_{1/2}/BT$  and the shunt ratio by the Fick method ( $r=0.92$ , regression equation : shunt ratio =  $28.78 \times T_{1/2}/BT + 2.358$ ). Right-to-left shunt group was separated well from the control group by using  $ATp/BT$  (appearance time of the peripheral arterial dilution curves divided by build-up time of the precordial or the pulmonary dilution curves).

京都大学医学部外科学教室第2講座 横田通夫

## Operative Results and Postoperative Hemodynamic Results in Total Collection of Tetralogy of Fallot—With Special Reference to Patient's Age and Enlargement of Right Ventricular Outflow tract—

HIDETAKA OKU

The 2nd Surgical Division, Kinki University, School of medicine. (Director : Prof. Dr. TAKESHI KUYAMA) Sayamacho Minamikawachigun, Osaka Japan.

Arch. Jap. Chir., 45 (2), 87~108, 1976.

Intracardiac repair for Fallot's tetralogy was performed on 135 patients. Operative mortality was not influenced by age factors. Pulmonary annulus should be greater than  $18\text{cm}^2$  per unit BSA in the patients with BSA less than  $0.6\text{M}^2$ . Residual pulmonary stenosis was milder in the younger patients and in the patients with larger cross-sectional area index of pulmonary annulus. When an outflow patch was used, pulmonary regurgitation was negligible as far as cross-sectional area index was less than  $2.6\text{cm}^2/\text{M}^2$ . For a symptomatic patients, primary intracardiac repair is preferable regardless of age and weight if pulmonary arteries are of adequate size.

近畿大学医学部第2外科学教室 奥 秀喬

10

## Pathophysiological Studies on the Early Stages of Intraventricular Hemorrhages in Dogs

TOYO KOBAYASHI

Department of Neurosurgery, School of Medicine, Iwate Medical University,  
(Director : Prof. Dr. HARUYUKI KANAYA) Morioka, Japan.

Arch. Jap. Chir., 45 (2), 109~122, 1976.

Little work on the pathophysiology of intraventricular hemorrhages has been done until the present. The author carried out pathophysiological studies on artificially induced intraventricular hemorrhages in dogs. The intracranial pressure, the lumbar pressure, the systemic blood pressure, and the vertebral blood flow were measured continuously in dogs which had autoblood injected into their lateral ventricles. At the same time, changes in their respiration and their EEG were recorded. The results of this experiment showed that the intracranial pressure was more affected by the speed of blood injection, the volume of injected blood, and the respiratory disturbances, than by the blocking of the cerebro-spinal fluid circulation. The blood pressure, the respiration, the vertebral blood flow, and the EEG showed marked changes when the intracranial pressure rose to more than  $500\text{mmH}_2\text{O}$ .

岩手医科大学脳神経外科学教室 小林東洋

## Experimental Evaluation of Assisted Extracorporeal Circulation Using LANDÉ-EDWARDS Membrane Oxygenator for Induced Acute Pulmonary Insufficiency

RYUICHI KAKU

Department of Surgery I, Yamaguchi University School of Medicine (Director : Prof. Dr. RIKIO YAMAKI) Ube, Yamagnchi, Japan.

Arch. Jap. Chir., 45 (2), 123~133, 1976.

The present study has been carried out to learn the effect of assisted extracorporeal circulation using LANDÉ-EDWARDS membrane oxygenator on acute pulmonary insufficiency induced by infusing oleic acid of a lethal dose into the right ventricle. Venous-arterial and venous-venous perfusions were performed with a flow rate of 50ml/kg/min. Hemodynamic changes and the survival time were evaluated. It is concluded that venous-arterial perfusion is beneficial for pulmonary insufficiency induced by embolism because of ameliorating right ventricular overloading as well as improving blood-gas exchange and venovenous one is rather harmful for this disorder.

山口大学医学部外科学教室第1講座 角 隆一

## An Experimental and Clinical Study on Flexion Movement of the Finger—Changes in Flexion Movement Related to Structural Impairments

YASUO UEBA

Department of Orthopedic Surgery, Faculty of Medicine, Kyoto University. (Director : Prof. Dr. TETSUO ITO) Sakyo-ku, Kyoto, Japan.

Arch. Jap. Chir., 45 (2), 134~174, 1976.

Structural impairments have drawn little attention as a cause to limit the digital flexion movement, whereas tendon adhesion and joint contracture have been considered to be important factors. Changes in the digital flexion produced by various structural impairments in the hand were studied experimentally and clinically. Six amputated hands were utilized in the experiment, and the results were compared to the postoperative digital movements on clinical observation. It was concluded in this study that impairments of such structures as the pulley, the lumbrical muscle or the flexor tendon produce the corresponding limitations of the digital flexion movement.

京都大学医学部整形外科学教室 上羽康夫

## Laminectomy for Spinal Cord Compression from Metastatic Tumor

AKIRA HATTORI

Department of Orthopedic Surgery, Akita University School of Medicine, Akita Japan.

Arch. Jap. Chir., 45 (2), 175~180, 1976.

The results of decompression laminectomy were assessed in a series of nine patients with spinal cord compression due to metastatic tumors.

Seven patients lived more than six months after operations. In six patients, relative successful results were obtained. In general, the more rapid the rate of progression was and the longer the duration of severe neurological deficits was, the less favorable was the postoperative prognosis.

Decompression with laminectomy and with attempted removal of the metastatic tumor is recommended in most of the cases with spinal cord compression due to metastatic tumor, except those with a rapid progression of symptoms.

秋田大学医学部整形外科学教室 服部 彰

## **An Experimental Study on the Proliferation of Epiphyseal Cartilage Cells After Partial Resection of Epiphyseal Plate**

KISABURO SAKAKIDA and BUNJI YAMASHITA

Department of Orthopedic Surgery, Kyoto Prefectural University of Medicine. Kamigyoku, Kyoto, Japan.

Arch. Jap. Chir., 45 (3), 201~212, 1976

Two kinds of injuries were inflicted on the medial 1/3 of the proximal epiphyseal cartilage of the tibia of young Wistar rats. The mode of repair was studied using <sup>3</sup>H-thymidine autoradiography.

Consequently, after resection of the hypertrophic cell layer and primary spongiosa the height of the epiphyseal cartilage was increased markedly, followed by a return to the control level. However, resection of the total epiphyseal cartilage resulted in formation of bony bridge at the site of injury, which a decrease in height of the remaining epiphyseal cartilage.

It is thought to be due to the capacity of the proliferating layer.

京都府立医科大学整形外科教室 榑田喜三都, 山下文治

2

## **Statistical Study on Peripheral Nerve Injury**

YASUSUKE HIRASAWA, RYOSUKE ODA, KATSUYA NAKATANI, YOSHIRO SHIKATA and TOKUTARO MAKINO

Department of Orthopaedic Surgery, Kyoto Prefectural University of Medicine. Kamigyoku, Kyoto, Japan.

Arch. Jap. Chir., 45 (3), 213~221, 1976

A statistical study was done on the series of 590 cases of peripheral nerve injuries which were examined and treated at authors' Department in the period of 12 years between April 1, 1963 and March 31, 1975. Patients with peripheral nerve lesions possibly or apparently due to viral infections or systemic diseases were excluded from this study.

The peripheral nerve injuries that were encountered in daily practice presented increasing complexity in their features, due to a drastic increase of industrial and traffic injuries in the recent decades.

京都府立医科大学整形外科教室 平沢泰介, 小田良之輔, 中谷勝也, 四方義朗  
牧野督太郎, 諸富武文

## **A Collective Review of the 336 Cases of Gallstones Operated on at 17 Hospitals**

- The first report -

MASAO NAGASE, HIROSHI TANIMURA, MASAFUMI TAKENAKA and MOTOICHI SETOYAMA

The 2nd Surgical Department Kyoto University School of Medicine (Director . Prof. Dr. YORINORI HIKASA) Sakyo-ku, Kyoto, Japan.

Arch. Jap. Chir., 45 (3), 222~226, 1976

The authors, intending to know the present status of cholelithiasis in Japan, began to collect the operation records of the patients operated on for cholelithiasis at 17 hospitals since September 1975. As the first report, the kinds and locations of stones and the modes of operation were presented of the 336 cases collected up to February 1976. Although cholesterol stones in the gallbladder were dominant, bilirubin stones in the common bile duct were not infrequent

京都大学医学部外科学教室第2講座 長瀬正夫, 谷村弘, 竹中正文, 瀬戸山元一

4

## **Reconstruction of the Occluded Popliteal Artery**

- Popliteal Artery Entrapment Syndrome and Buerger's Disease -

KANJI IWAHASHI, SHINJI MURATA, TOSHIMI YASUNAGA, HIROSHI TAKAHASHI and MASAMI GOROKAWA

Department of Surgery, Takayama Red Cross Hospital. Takayama, Gifu, Japan.

Arch. Jap. Chir., 45 (3), 227~232, 1976

Two cases of occlusion of the popliteal artery due to entrapment by an abnormal laterally attached medial head of the gastrocnemius and thromboangitis obliterans are reported.

1) Popliteal artery entrapment syndrome: Exploration of the right popliteal artery demonstrated an abnormal lateral attachment of the medial head of the gastrocnemius muscle with compression of the artery. An endarterectomy was performed and a patch graft of saphenous vein was used to reconstruct the artery.

2) Buerger's disease: A femoral arteriogram revealed incomplete occlusion of popliteal artery. Replacement of the involved segment of the artery was accomplished with segment of saphenous vein.

高山赤十字病院外科 岩橋寛治, 村田真司, 安永敏美, 高橋 裕, 五郎川正己

## Electron Microscopic Studies on Endocrine Cells and Exocrine Cells in Gastric Mucosa of Rats —I. Endocrine cells in Gastric Mucosa of Fasting Rats—

MASAHIRO SANO

The 2nd Surgical Department, Kyoto University, Faculty of Medicine (Director : Prof. Dr. YORINORI HIKASA)

The Surgical Department, Kansai-Denryoku Hospital (Director: Dr. Yuzo SUGIMOTO)

Arch. Jap. Chir., 45 (4), 243~264, 1976.

The endocrine cells of the gastrointestinal tract have been known recently as the origins of the gastrointestinal hormones and classified to several cell types.

With an attempt to elucidate the relationships between the cell types and their producing hormones, in this paper, the endocrine cells in the fasting rat stomach were studied using an electron microscope.

At least 7 cell types of the endocrine cells were identified in the rat stomach on the basis of their morphological differences. The relationships between these cell types and the proposed hormones they secrete are discussed here.

関西電力病院外科, 京都大学医学部外科学教室第2講座 佐野正博

## Electron Microscopic Studies on Endocrine Cells and Exocrine Cells in Gastric Mucosa of Rats —II. Morphological Changes in Chief Cells and Parietal Cells After Fasting, Refeeding, and Electric Vagal Stimulation—

MASAHIRO SANO

The 2nd Surgical Department, Kyoto University, Faculty of Medicine (Director : Prof. Dr. YORINORI HIKASA)

The Surgical Department, Kansai-Denryoku Hospital (Director: Dr. Yuzo SUGIMOTO)

Arch. Jap. Chir., 45 (4), 265~278, 1976.

A study was made of the changes in the fine structure in the chief cells and parietal cells in the gastric fundus gland of rats after fasting, refeeding and electric vagal stimulation.

The results showed that there existed the relation between the morphological changes in these cells and their functional states.

The following suggestion was also obtained that an electric vagal stimulation might damage the physiological cycle of secretion and synthesis in these cells, although both secretion and synthesis were stimulated by refeeding.

関西電力病院外科, 京都大学医学部外科学教室第2講座 佐野正博

## Studies on Extragastric Gastrin : Its Secretion Mechanism

TOICHI SOGAME

From the Department of Surgery 1, Yamaguchi University School of Medicine (Director : Prof. Dr. RIKIO YAMAKI) Ube, Yamaguchi, Japan.

Arch. Jap. Chir., 45 (4), 279~288, 1976.

1) Thirty days after distal and total gastrectomies, serum gastrin levels recovered to more than 60% of preoperative levels.

2) Serum gastrin levels changed more remarkably in the Billroth II than in the Billroth I group after meals and after giving glycine. This phenomenon was caused by alkalization in the duodenal lumen and disappeared after truncal vagotomy.

3) A relationship was not found between serum gastrin levels and digestive ability.

4) By immunofluorescence, G-cells were seen in canine duodenal mucosa up to 11 cm distal to the pyloric ring, but were not seen in the upper jejunum.

山口大学医学部外科学教室第1講座 十亀東一

## Intraarticular Injection of Mucopolysaccharide Polysulfuric Acid Ester in the Treatment of Osteoarthritis of the Hip Joints

SEISUKE TANAKA and TETSUO ITO Department of Orthopedic Surgery Faculty of Medicine Kyoto University.

(Director : Prof. Dr. Tetsuo Ito) Sakyo-ku, Kyoto, Japan

Arch. Jap. Chir., 45 (4), 289~297, 1976.

In the treatment of osteoarthritis of the hip joint, intraarticular injections of mucopolysaccharide polysulfuric acid ester (Arteparon forte) were given to nine patients (including five with congenital acetabular dysplasia, three with idiopathic avascular necrosis of the femoral head, and one with primary osteoarthritis). Pain was relieved in all patients. Therapeutic effects have continued for three years and one month. Side effects are negligible. On the basis of the therapeutic results Arteparon is considered to be suitable drug to be prescribed before surgical intervention.

京都大学医学部整形外科科学教室 田中清介 伊藤鉄夫

## Ventriculography and Myelography with Water-soluble Contrast Media

TSUNEMARO KOYAMA, JUNYA HANAKITA and AKINORI KONDO Department of Neurosurgery, Fukui Red Cross Hospital (Chief : Dr. AKINORI KONDO) Fukui

JYOJI HANDA and HAJIME HANDA Kyoto University Medical School and Hospital (Director : Prof. Dr. HAJIME HANDA) Sakyo-ku, Kyoto, Japan.

Arch. Jap. Chir., 45 (4), 298~310, 1976.

Experiences in ventriculographies and myelographies with a new water-soluble contrast medium, Dimer-X (Meglumine iocarmate 60%) were summarized. Available literature was reviewed and the merit and demerit of use of water-soluble contrast media for radiographic study of ventricles and spinal subarachnoid space were discussed.

福井赤十字病院脳神経外科 小山素麿, 花北順哉, 近藤明彦  
京都大学医学部脳神経外科学教室 半田讓二, 半田 肇

## Studies on Administration of Cephalosporin in Extracorporeal Circulation

KINYA YAMADA, NORIKAZU TATSUTA, MITSUHIKO MATSUDA, NOBU-YOSHI DAITO and MINORU AOSHIMA

The 2nd Department of Surgery, Kyoto University, School of Medicine.

(Director: Prof. Dr. YORINORI HIKASA) Sakyo-ku, Kyoto, Japan.

Arch. Jap. Chir., 45 (4), 311~318, 1976.

Prophylactic administration of wide spectrum Cephalosporin, namely Cefazolin and Cephalothin in open heart surgery with extracorporeal circulation was studied for their safe and adequate dosage. The results obtained were as follows.

1) With the body weight of 20kg or less, administration of 0.5 to 1.0g Cefazolin for every 60 minutes' extracorporeal circulation maintained adequate serum level. For the body weight exceeding 20kg, initial dose was 2g and for every additional 60 minutes' extracorporeal circulation, 1 g was required.

2) With the body weight of 20kg or less, prophylactic administration of 1.0g of Cephalothin for every 40 minutes' extracorporeal circulation was adequate. For the body weight exceeding 20kg, initial dose was 3g, and additional dose of 2g for every exceeding 40 minutes' extracorporeal circulation was necessary.

京都大学医学部外科学教室第2講座 山田公弥 龍田憲和 松田光彦 大頭信義 青嶋 実

## Torsion of the Floating Gall Bladder

RYUZO SHIODA, KANAE MATSUDA, and YOSHINOBU NOMURA  
Surgical Department of the Japan Baptist Hospital.

YOH KASAHARA

The 2nd Surgical Department of Kinki University, School of Medicine.

Arch. Jap. Chir., 45 (4), 319~323, 1976.

The purpose of publishing this article on torsion of the gall bladder is to define the characteristic aspects of this disease, which has been reported rarely in the Japanese medical literature, by reviewing the previous case reports and including the present two cases and also to remind physicians of the possibility of this disease in order to reduce the high mortality by early diagnosis and surgery. Two cases are presented, one a young boy and the other is an elderly female.

日本バプテスト病院外科 塩田隆三, 松田香苗, 野村義信  
近畿大学医学部第2外科学教室 笠原 洋



## **Ultrastructural Alterations of the Nerve Cell Bodies in the Dog Superior Cervical Ganglion, Following Surgical Destruction of the Hypothalamus**

TAKAYUKI NAGANO

Department of Neurosurgery, Iwate Medical University School of Medicine, (Director : Prof. Dr. HARUYUKI KANAYA) Morioka, Iwate, Japan.

Arch. Jap. Chir., 45 (4), 329~338, 1976

The hypothalamic locus between the infundibulum and the mamillary body of the dog was destroyed by means of electrocoagulation, and the changes in the nerve cell bodies of the superior cervical ganglia were examined with an electron microscope during the period from 3 to 14 days after the operation.

The results show that the intranucleolar lighter zone of the sympathetic postganglionic neurons with the hypothalamus destroyed was consistently more enlarged than in the control dogs.

Also, the perikaryal lysosomes in the neurons increased greatly in number in the dogs subjected to the hypothalamic destruction.

岩手医科大学脳神経外科学教室 長野隆行

26

## **Comparative Study on Vagotomy Procedures in Relation to Biliary Composition**

KATSUHIKO KOMAKI

Department of Surgery, Osaka Kita Teishin Hospital, Kita-ku, Osaka, Japan.

Arch. Jap. Chir., 45 (5), 339~355, 1976

This is study investigated the effect of the vagus nerves on gall bladder bile of dogs in relation to the pathogenesis of lithogenic bile. Animals with truncal vagotomy showed remarkable changes in the major biliary components, while those with selective gastric vagotomy did not show any changes except for transient postvagotomy ones, as compared with the untreated controls. The conclusion is that preservation of the hepatic and posterior celiac vagi should be attempted in performing vagotomy for peptic ulcers as well as radical operations for cancer of the stomach or the esophagus.

大阪北遥信病院外科 小牧勝彦

## **Cancer Immunotherapy with BCG for Patients with Stomach Cancers**

Ryuzo Shioda, Kanae Matsuda, and Yoshinobu Nomura

Department of Surgery, the Japan Baptist Hospital, Sakyo-ku, Kyoto, Japan.

Yoh Kasahara

The 2nd Department of Surgery, Kinki University School of Medicine, Minamikawachi-gun, Osaka, Japan.

Arch. Jap. Chir., 45 (4), 356~368, 1976

In recent years, Morton and Mathé have reported that immunotherapy with BCG was effective in prolonging remissions in malignant melanoma and leukemia. The author paid attention to their reports and decided to apply cancer non-specific immunotherapy with BCG to patients with stomach cancers after palliative or non-curative surgery. Some investigators insist that BCG is not effective in controlling cancers of the gastrointestinal tract, such as stomach and colon. We have, however, noted the interesting result that patients who received BCG immunotherapy survived longer than untreated controls.

日本バプテスト病院外科 塩田隆三, 松田香苗, 野村義信  
近畿大学医学部第2外科学教室 笠原 洋

28

## **Electron Microscopic Studies on Endocrine Cells and Exocrine Cells in Gastric Mucosa of Rats**

### **III. Effects of Vagotomy on Exocrine Cells and Endocrine Cells**

MASAHIRO SANO

The 2nd Surgical Department, Kyoto University, School of Medicine (Director : Prof. Dr. YORINORI HIKASA) Sakyo-ku, Kyoto, Japan.

The Surgical Department, Kansai-Denryoku Hospital (Director : Dr. YUZO SUGIMOTO) Fukushima-ku, Osaka, Japan.

Arch. Jap. Chir., 45 (5), 369~389, 1976

Light and electron microscopic studies were made on the gastric mucosa of rats after truncal vagotomy with pyloroplasty.

Light microscopic observations demonstrated that the atrophy of the gastric gland occurred.

Electron microscopic examinations showed the increased number of tubulovesicles, the narrowed intracellular canaliculi, and the short microvilli in the parietal cells, and showed the storage of the zymogen granules and the dilatation and atrophy of the rough endoplasmic reticulum in the chief cells.

There were no remarkable morphological changes in the fine structures in most of the endocrine cells in the pyloric gland except where the postganglionic fibers of the vagus were degenerated.

関西電力病院外科, 京都大学医学部外科学教室第2講座 佐野正博

## Effect of Glucagon Administration on Blood Glucose Level in Totally Depancreatized Dogs

ICHIRO NISHIMURA

The 1st Surgical Department, Kyoto University Medical School (Director : Prof. Dr. ICHIO HONJO) Sakyo-ku, Kyoto, Japan.

Arch. Jap. Chir., 45 (5), 390~397, 1976

Mongrel dogs which survived over 2 weeks after the operation, were injected subcutaneously a dose of 40 $\mu$ g/kg glucagon.

Blood samples were taken for the purpose of measuring blood glucose, serum insulin and glucagon levels.

The results are as follows ;

- 1) The lower the fasting blood glucose level was the higher the increasing rate of blood glucose level was observed
- 2) A close relationship between the increasing rate of blood glucose level after the injection of glucagon and glucose assimilation index after the insulin administration was demonstrated.

The higher the level of glucose assimilation index was, the higher the increasing rate of blood glucose level was observed.

京都大学医学部外科学教室第1講座 西村一郎

## Treatment of Shunt Infection : Conversion of External Ventricular Drainage to Gastric Shunt for Persistent Ventriculitis

KOREAKI MORI and HAJIME HANDA

Department of Neurosurgery, Kyoto University Medical School (Director : Prof. Dr. HAJIME HANDA) Sakyo-ku, Kyoto, Japan.

HIROHISA MUROYA

The 2nd Department of Surgery, Kyoto University Medical School (Director : Prof. Dr. YORINORI HIKASA) Sakyo-ku, Kyoto, Japan.

Arch. Jap. Chir., 45 (5), 398~400, 1976

Abstract : A case of infantile hydrocephalus is reported in which an external ventricular drainage applied to control shunt infection with persistent ventriculitis was successfully maintained for extended periods in the stomach. A ventriculo-gastric shunt could be substituted the external ventricular drainage when shunt infection occurred.

京都大学医学部脳神経外科学教室 森 惟明, 半田 肇

## Successful Ligation of the Patent Ductus Arteriosus in a 1,710-gram Premature Baby with RDS and the Review of the Literature

MICHIO YOKOTA, RYUSUKE MURAOKA, HIDETSUGU TANAE, YORINORI HIKASA

The 2nd Department of Surgery, Kyoto University, School of Medicine. (Director: Prof. Dr. YORINORI HIKASA) Sakyo-ku, Kyoto, Japan.

HIROYUKI NAKANO, KIYOSHI BABA, SUMITA SHIMIZU, YOSHIFUMI FUSEYA

Department of Pediatrics, Kyoto University, School of Medicine (Director : Prof. Dr. ROKURO OKUDA) Sakyo-ku Kyoto, Japan.

REIJU SHIMIZU Department of Anesthesiology Kyoto University, School of Medicine. (Director : Prof. Dr. KENJIRO MORI) Sakyo-ku Kyoto, Japan.

Arch. Jap. Chir., 45 (5), 401~426, 1976

A successful ligation of a patent ductus arteriosus in a 53-day-old, 1,710-gram premature baby with respiratory distress syndrome for the treatment of medically unresponsive congestive heart failure was reported. The baby is doing well 22 months postoperatively. The literature was reviewed and was described in detail.

京都大学医学部外科学教室第2講座 横田通夫, 村岡隆介, 田苗英次, 日笠頼則

京都大学医学部小児科学教室 中野博行, 馬場清, 清水澄太, 伏屋芳文

京都大学医学部麻酔学教室 清水礼寿

## Clinical Studies on Results of Repair of Ventricular Septal Defect Associated with Severe Pulmonary Hypertension

—Mortality and Hemodynamic Changes in Various Age Groups—

YOSHIO KANZAKI

The 2nd Surgical Department, Kyoto University, School of Medicine (Director : Prof. Dr. YORINORI HIKASA), Sakyo-ku Kyoto Japan

Department of Surgery, Heart Institute, Hyogo Kenritsu Amagasaki Hospital (Director : Dr. HITOSHI SHIROTANI)

Arch. Jap. Chir., 45(6), 437~456, 1976.

Primary repair of isolated ventricular septal defect associated with severe pulmonary hypertension was performed on 181 patients. Mortality related to the degree of pulmonary vascular disease, not to the patient's age, and was acceptably low in later series of this investigation. On follow-up studies, it is definitely indicated that pulmonary to systemic pressure ratio (Pp/Ps) and vascular resistance ratio (Rp/Rs) have shown more rapid fall after repair in young infants than did in older children, and that some instances operated on after 2 years of age with Rp/Rs greater than 0.75 have shown progressive or stationary pulmonary vascular disease and thus these patients should be operated on before 2 years of age.

京都大学医学部外科学教室第2講座 兵庫県立尼崎病院心臓センター外科部 神崎義雄

32

## Fluorescence Histochemical Study of the Central Monoaminergic Neuron System on Experimental Torticollis in the Cat

MASATSUNE ISHIKAWA

Department of Neurosurgery, Faculty of Medicine, Kyoto University (Director : Prof. Dr. HAJIME HANDA), Sakyo-ku, Kyoto, Japan.

Arch. Jap. Chir., 45 (6), 457~470, 1976.

To determine whether or not the central monoaminergic neuron system is involved in the control of head and neck movement, the Falck-Hillarp fluorescence histochemical method was applied to experimental torticollis in cats. In animals with torticollis, the lesions were located in the ventromedial tegmentum of the rostral mesencephalon and significant retrograde changes in the ascending monoaminergic fibers were noted in the ventral tegmental area. These findings support the postulation that the monoaminergic neuron system does play a role in head and neck movement.

京都大学医学部脳神経外科学教室 石川正博

33

## Chemically Defined Diets from Viewpoint of Formation of Gallstones

HIROSHI TANIMURA, MOTOICHI SETOYAMA, TOSHIO KAMATA, MASAO NAGASE and YORINORI HIKASA

The 2nd Surgical Department, Kyoto University, School of Medicine (Director : Prof. Dr. YORINORI HIKASA), Sakyo-ku Kyoto, Japan.

Arch. Jap. Chir., 45(6), 471~482, 1976.

The lithogenicity and nutritional effects of a new commercial, chemically defined diet (Delmark Feeding Formula®) prepared for tube feeding were studied in hamsters in comparing with those fed with a chow diet or with our lithogenic solid or liquid diet.

The animals fed with the Delmark Feeding Formula® showed good growth and high serum protein levels but not high serum cholesterol levels. Although almost all animals fed with our lithogenic solid or liquid diet formed gallstones in their gallbladders, only one of the ten animals fed with the Delmark Feeding Formula® formed a small pigment stone.

京都大学医学部外科学教室第2講座 谷村 弘, 瀬戸山元一, 鎌田寿夫, 長瀬正夫, 日笠頼則

34

## A Collective Review of the 796 Cases of Gallstones Operated on at 23 Hospitals —The Second Report—

MASAO NAGASE, HIROSHI TANIMURA, MASAFUMI TAKENAKA, MOTOICHI SETOYAMA and TOSHIO KAMATA

The Second Surgical Department, Kyoto University, School of Medicine (Director : Prof. Dr. YORINORI HIKASA), Sakyo-ku, Kyoto, Japan.

Arch. Jap. Chir., 45 (6), 483~486, 1976.

The operation records of the 796 patients operated on for cholelithiasis at 23 hospitals situated in Kinki district from September 1975 to August 1976 were collected in order to know the present status of cholelithiasis in Japan.

Although cholesterol stones in the gallbladder were so dominant as might be expected, bilirubin stones were still not infrequent, especially in elderly persons.

京都大学医学部外科学教室第2講座 長瀬正夫, 谷村 弘, 竹中正文, 瀬戸山元一, 鎌田寿夫

**Gallstone Ileus**

YOH KASAHARA, SEI SHIRAHARA, HIROYA UMEMURA and HIROMI TANABE

The 2nd Department of Surgery, Kinki University, School of Medicine (Director : Prof. Dr. TAKESHI KUYAMA) Minami-Kawachi, Osaka, Japan.

KOJI SAKATA and HIDEO KUBOTA

Department of Surgery, Kanazawa Nada Hospital, Kōbe, Japan.

HIROSHI KOIZUMI and HITOSHI KADOTANI

Department of Internal Medicine, Kanazawa Nada Hospital, Kobe, Japan.

Arch. Jap. Chir., 45(6) 487~497 1976.

Sixty-four cases of gallstone ileus in Japan since 1903 to 1975 were collected with a brief clinical report of personal experience. This ileus was a complication of chronic disease of the biliary tract. But a quarter of the collected cases had no suspicious history of the disease of the biliary tract. Salient points in diagnosis and treatment were discussed. During the course of prolonged bowel obstruction, we should consider of the possibility of gallstone ileus in the differential diagnosis.

近畿大学医学部外科学教室第2講座 笠原 洋, 白羽 誠, 梅村博也, 田辺広己

金沢灘病院外科 坂田康二, 久保田秀夫

〃 内科 小泉 広, 角谷 仁

**Primary Hodgkin's Disease of the Ileum with Intussusception.**

TOSHIO KAMATA, KAZUHIRO MARUHASHI, TNSHIHIKO OGANE, YASUO

BANDO and KEIBUN HARA

The department of surgery, Nagahama Red Cross Hospital, Nagahama, Shiga, Japan.

Arch. Jap. Chir., 45 (6), 498~502, 1976.

Hodgkin's disease of small intestine is very rare. Only five cases have been reported in Japanese literatures. A 48 year old man, complaining of the intermittent colicky pain and movable tumor in the abdomen, was diagnosed as the intussusception by the barium enema study at laparotomy, a tumor was found in the distal ileum which had led to the intussusception.

Pathologic findings revealed Hodgkin's disease of the ileum.

投稿規定 (昭. 49.7.1 改正)

- 本誌は毎年1月, 3月, 5月, 7月, 9月及び11月の1日に発行する (年間6冊). 状況により臨時増刊を発行する.
- 本誌予約購読者の原稿を掲載する.
- 予約購読料は年額3,000円 (送料を含む) とし, 分売は1冊500円とする.
- 原稿の長さはおおよそ下記の限度とし, 和文原稿には欧文表題・欧文抄録. 欧文原稿には和文表題及び和文抄録を添付されたい.  
原著論文, 綜説, 臨床, 400字詰40枚以内 (図表共)  
症例報告, 研究速報, 400字詰15枚以内 (図表共)
- 原稿が当編集室へ到達した日附を受付日とする.
- 原稿の用語中, 固有名詞はすべて固有の文字を, 又数字はすべて算用数字を使用し, 日本語化した外国語は片かなでかく事. この際は「」不要.
- 数量の単位は下記の例による.  
例, m, cm, mm, cc, kg, g, °C, μ, %, pH, 等 ピリオド不要
- 原稿は横書とし新かなづかいを用いる事.
- 欧文及び欧文抄録はタイプライターで記入されたい. 又, この他に欧和文とも 100 words以内の欧文抄録を添付されたい.
- 欧文中の人名にはアンダーラインを記入する事 (文献を除く).
- 挿画, 曲線等は必ず白紙又は青線方眼紙に墨で清書し, 直ちに凸版の製作が出来るようにして送附の事. また, その挿入位置を原稿に記入する事.
- 図, 表, 写真等はすべて別紙に記入, もしくは添付

- し本文中には挿入箇所のみ指定する事.
- 原稿は完全なものとして御送附願いたい. 校正の際における加筆補正は認めない.
- 引用文献は篇末に集め, 次の例による.  
Faris, T. D., Dickhans, A. J., Marchioro, T. L. and Starzl, T. E.: Radioisotope scanning in auxiliary liver transplantation, Surg. Gyn. Obst., 123 : 1261, 1966.  
Wolf, S. and Wolf, H. G.: Human Gastric Function. London, Oxford University Press, 1943.  
Sissons, H. A.: The growth of bone. In The Biochemistry and Physiology of Bone, edited by Borne, G. H. New York Academic Press Inc., 1956.
- 所 安夫: 脳腫瘍. 東京, 医学書院, 昭34.  
三宅 儀: 副腎皮質ホルモンの測定と臨床. 最新医学 6 : 769, 昭26.
- 掲載料, 図表, 写真版等の費用は著者の実費負担とする. アート紙の使用, コロタイプ, 天然色図版の掲載等に関しても著者において実費を負担するものとする.
- 執筆者において別刷希望の方は, 投稿と同時に希望数を附言されたい. 別刷は1頁10円を申し受ける.
- 原稿は書留郵便で下記に送られたい.
- なお原稿は返却しない.

京都市左京区聖護院川原町54  
京都大学医学部附属病院外科学教室内  
日本外科宝函編集室宛  
電 (075) 751-3 6 5 9

昭和50年12月20日印刷  
昭和51年1月1日発行

編集兼発行者 京都市左京区聖護院川原町  
日 笠 頼 則  
印刷者 京都市下京区油小路松原上ル  
松 崎 秀 雄  
印刷所 京都市下京区油小路松原上ル  
松崎印刷株式会社

発行所

京都大学医学部外科整形外科学教室  
日本外科宝函編集室  
代表者 日 笠 頼 則  
(振替口座京都3691)

投稿規定(昭. 49.7.1改正)

- 本誌は毎年1月, 3月, 5月, 7月, 9月及び11月の1日に発行する(年間6冊). 状況により臨時増刊を発行する.
- 本誌予約購読者の原稿を掲載する.
- 予約購読料は年額3,000円(送料を含む)とし, 分売は1冊500円とする.
- 原稿の長さはおよそ下記の限度とし, 和文原稿には欧文表題・欧文抄録, 欧文原稿には和文表題及び和文抄録を添付されたい.  
原著論文, 綜説, 臨床, 400字詰40枚以内(図表共)  
症例報告, 研究速報, 400字詰15枚以内(図表共)
- 原稿が当編集室へ到達した日附を受付日とする.
- 原稿の用語中, 固有名詞はすべて固有の文字を, 又数字はすべて算用数字を使用し, 日本語化した外国語は片かなでかく事. この際は「」不要.
- 数量の単位は下記の例による.  
例, m, cm, mm, cc, kg, g, °C, μ,  
%, pH, 等 ピリオド不要
- 原稿は横書とし新かなづかいを用いる事.
- 欧文及び欧文抄録はタイプライターで記入されたい. 又, この他に欧和文とも 100 words以内の欧文抄録を添付されたい.
- 欧文中の人名にはアンダーラインを記入する事(文献を除く).
- 挿画, 曲線等は必ず白紙又は青線方眼紙に墨で清書し, 直ちに凸版の製作が出来るようにして送附の事. また, その挿入位置を原稿に記入する事.
- 図, 表, 写真等はすべて別紙に記入, もしくは添付

- し本文中には挿入箇所のみ指定する事.
- 原稿は完全なものとして御送附願いたい. 校正の際における加筆補正は認めない.
- 引用文献は篇末に集め, 次の例による.  
Faris, T. D., Dickhans, A. J., Marchioro, T. L. and Starzl, T. E.: Radioisotope scanning in auxiliary liver transplantation. Surg. Gyn. Obst., 123: 1261, 1966.  
Wolf, S. and Wolf, H. G.: Human Gastric Function. London, Oxford University Press, 1943.  
Sissons, H. A.: The growth of bone. In The Biochemistry and Physiology of Bone, edited by Borne, G. H. New York Academic Press Inc., 1956.
- 所 安夫: 脳腫瘍. 東京, 医学書院, 昭34.  
三宅 儀: 副腎皮質ホルモンの測定と臨床. 最新医学 6: 769, 昭26.
- 掲載料, 図表, 写真版等の費用は著者の実費負担とする. アート紙の使用, コロタイプ, 天然色図版の掲載等に関しても著者において実費を負担するものとする.
- 執筆者において別刷希望の方は, 投稿と同時に希望数を附言されたい. 別刷は1頁10円を申し受ける.
- 原稿は書留郵便で下記に送られたい.
- なお原稿は返却しない.

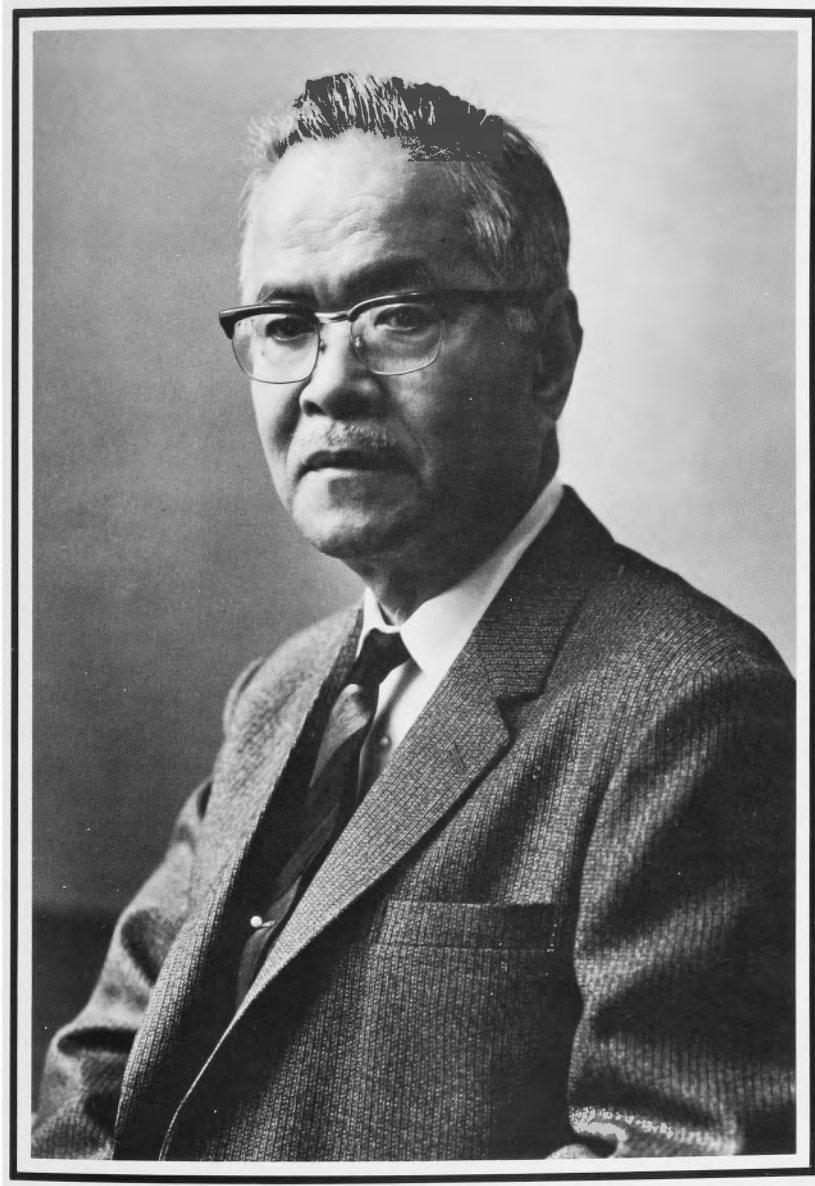
京都市左京区聖護院川原町54  
京都大学医学部附属病院外科学教室内  
日本外科宝函編集室宛  
電(075)751-3659

昭和51年4月20日印刷  
昭和51年5月1日発行

編集兼発行者 京都市左京区聖護院川原町 日 笠 頼 則  
印刷者 京都市下京区油小路松原上ル 松 崎 秀 雄  
印刷所 京都市下京区油小路松原上ル 松崎印刷株式会社

発行所

京都大学医学部外科整形外科学教室  
日本外科宝函編集室  
代表者 日 笠 頼 則  
(振替口座京都3691)



## 弔 詞

本日、恩師荒木千里先生の御葬儀に当り、先生の御指導をいたゞき、最も身近かに過した者の一人として、先生の御遺徳を偲び、門下生を代表して、謹んで追悼の言葉を述べさせていただきます。

去る七月二日朝九時五分、先生は思い出多い京大外科北病舎跡の脳神経外科病棟で静かに永眠されました。もはやどうすることもできない最後の瞬間を迎えた時、深い悲しみと漠とした虚無感とともに、私は一人の偉大なる学者の終焉を思いました。

九州熊本から上洛してきた小柄な青年が、稀有な頭脳とひたむきな情熱をもち、わが国脳神経外科のパイオニアとして、今日の隆盛の礎をきざいた。それが先生の生涯であり、そのまゝわが国脳神経外科の歴史であると云えます。

国内に居りましても、諸外国にあっても、「私は荒木先生の弟子である」と、胸を張って云い、親の七光りを背に、先生の門下生であることに、私ども一同は誇りをもって生きてきました。

教室において、学問、研究に対しては、先生は実にきびしい方でありました。鋭い頭脳と卓越した着想をもたれ、門下生には常に適確を求められ、提出する原稿に対しては、時として辛辣な批判を下されました。先生に賞めていたゞくことは至難でありましたが、それに向って努力することは何よりの喜びでありました。

物事の決断をされる時の先生は実に明解でありました。私心をはさまれず、幾多の抵抗は熟知の上、強い意志と実行力をもって決断される先生は、非常に印象的であり、また尊敬する姿でありました。

しかし、反面、病舎会の時などの先生は、時が経つほどに、酔うほどに親しみやすく、十八番の枯すゝきを歌われる、話せる親爺であり、また一人娘薫さんの結婚式には、娘を嫁がせる淋しさを、酔いでまぎらわした人間味豊かな花嫁の父そのものでありました。

先生は教授在職二十四年の間に、数多くの結婚式の媒酌をされましたが、いつも新郎、新婦に饒げの言葉として、ドイツの王侯の箴言の一節

人はいつまでも若い  
愛されてさえおれば  
Wie lange man jung ist  
So lange man geliebt ist

という言葉を贈られました。

Wie lange man jung ist  
So lange man geliebt ist

と朗々と読み上げられる先生の声を思い浮べる時、私は謹厳実直な先生の、内に秘めたロマンを感じたのであります。

私は、はからずも、先生の御仕事と教室を継ぐことになりましたが、事ある毎に、先生の大きさを思い、「先生だったら、この場合どうされるか」と思って、過してまいりました。



先生が逝かれ、もうお目にかゝれることはできませんが、先生の偉業は永劫に残り、先生が育成された多くの弟子は、わが国外科および脳神経外科の各分野に活躍しております。先生がまかれた種は、立派に開花し、結実し、先生の業績を一層豊かに増すことと信じております。

先生の御冥福と、残された奥さま始め御家族の皆さまの御倅せを心からお祈り申し上げます。

昭和51年7月10日

門下生代表 半 田 肇