

Title	Unexpected Phylogenetic Position of Parapelophryne among Southeast Asian Bufonids as Revealed by Mitochondrial DNA Sequence (Amphibia, Anura, Bufonidae)
Author(s)	Matsui, Masafumi; Eto, Koshiro; Lau, Michael W. N.; Liu, Wanzhao; Nishikawa, Kanto
Citation	Current Herpetology (2015), 34(2): 182-187
Issue Date	2015-08
URL	http://hdl.handle.net/2433/216861
Right	© 2015 by The Herpetological Society of Japan; The full-text file will be made open to the public on 2017-08-01 in accordance with publisher's 'Terms and Conditions for Self-Archiving'
Type	Journal Article
Textversion	publisher

Unexpected phylogenetic position of *Parapelophryne* among Southeast Asian bufonids as revealed by mitochondrial DNA sequence (Amphibia, Anura, Bufonidae)

MASAFUMI MATSUI^{1*}, KOSHIRO ETO¹, MICHAEL W. N. LAU²,
WANZHAO LIU^{1,3}, AND KANTO NISHIKAWA¹

¹Graduate School of Human and Environmental Studies, Kyoto University, Sakyo-ku,
Kyoto 606–8501, Japan

²WWF-Hong Kong, Central, Hong Kong SAR, China

³University of Massachusetts Medical School, 55 Lake Avenue North Worcester MA
01655, USA

Abstract: We estimated the phylogenetic relationships of an enigmatic small toad *Parapelophryne scalpta* from Hainan Island, China to nine other bufonid genera from Southeast and East Asia using ca. 2000 bp sequences of the mitochondrial DNA genes 12S rRNA, tRNA^{val}, and 16S rRNA using maximum likelihood and Bayesian inference methods. The East and Southeast Asian bufonid genera formed a clade in which seven lineages with unresolved relationships to each other were recognized. Monophyly was supported only for (A) *Parapelophryne* and *Bufo*, (B) *Phrynoidis* and *Pedostibes*, and (C) *Leptophryne* and *Ansonia*. All genera were genetically divergent from each other and *Parapelophryne*, erected purely based on morphology, could be recognized as a distinct genus. On the other hand, it was found to be the sister genus of East Asian *Bufo*, an unexpected result given their great morphological difference and discontinuous distribution.

Key words: *Bufo*; China; *Parapelophryne*; *Pelophryne*; Phylogeny

INTRODUCTION

Bufonidae Gray, 1825 is a large, nearly cosmopolitan toad family consisting of 580 species (Frost, 2015). Southeast Asian members of the family were long considered to include only five genera (*Bufo* Garsault, 1764; *Ansonia* Stoliczka, 1870; *Leptophryne* Fitzinger, 1843; *Pedostibes* Günther, 1876; and

Pelophryne Barbour, 1938; Inger, 1966; Frost, 1985), but recent studies, mainly based on molecular phylogeny, split Southeast Asian *Bufo* into three genera (*Duttaphrynus* Frost, Grant, Faivovich, Bain, Haas, Haddad, de Sá, Channing, Wilkinson, Donnellan, Raxworthy, Campbell, Blotto, Moler, Drewes, Nussbaum, Lynch, Green, and Wheeler, 2006; *Ingerophrynus* Frost, Grant, Faivovich, Bain, Haas, Haddad, de Sá, Channing, Wilkinson, Donnellan, Raxworthy, Campbell, Blotto, Moler, Drewes, Nussbaum, Lynch, Green, and Wheeler, 2006; and *Phrynoidis* Fitzinger in Treitschke, 1842:

* Corresponding author. Tel: +81–75–642–8072;
Fax: +81–75–642–8072;
E-mail address: fumi@zoo.zool.kyoto-u.ac.jp

Frost et al., 2006). Phylogenetic relationships of these genera with other members from outside the region have been well studied (Frost et al., 2006; Pyron and Wiens, 2011).

One exception is the position of *Parapelophryne* Fei, Ye, and Jiang, 2003, a monotypic genus composed of *P. scalpta* (Liu and Hu, in Liu, Hu, Fei, and Huang, 1973), endemic to Hainan Island of southern China (Fei et al., 2005, 2012). The species was originally described by Liu et al. (1973) as a member of *Nectophryne* Buchholz and Peters, 1875, then moved to *Pelophryne* (Ye and Fei, 1978), and finally accommodated in a distinct genus *Parapelophryne* (Fei et al., 2003).

It is interesting and important to elucidate the phylogenetic position of *Parapelophryne* among allied bufonid genera from Southeast Asia to understand their evolutionary history in this region. We therefore analyzed mitochondrial gene sequences of *P. scalpta* and estimate the relationships by comparing the data with sequences of the allied genera that have already been clarified (Matsui et al., 2010, 2012).

MATERIALS AND METHODS

We examined DNA sequences of 12S rRNA, tRNA^{val}, and 16S rRNA genes from

two specimens of *P. scalpta* collected from Hainan Island during surveys conducted by the Kadoorie Farm and Botanic Garden Team and stored in 95% ethanol. The vouchers are temporarily kept at the Kyoto University, Graduate School of Human and Environmental Studies (KUHE). We compared the sequences thus obtained with representative species of eight other Southeast Asian bufonid genera (*Ansonia penangensis* Stoliczka, 1870; *Duttaphrynus melanostictus* [Schneider, 1799]; *Ingerophrynus parvus* [Boulenger, 1887]; *Leptophryne borbonica* [Tschudi, 1838]; *Pedostibes hosii* [Boulenger, 1892]; *Pelophryne signata* [Boulenger, 1895]; *Phrynooidis asper* [Gravenhorst, 1829]; *Sabahphrynus maculatus* [Mocquard, 1890]), one East Asian species (*Bufo japonicus formosus* Boulenger, 1883), and two distinctly distant (Frost et al., 2006) outgroup species (a bufonid, *Atelopus flavescens* Duméril and Bibron, 1841 and a dendrobatid *Dendrobates auratus* [Girard, 1855]; Table 1).

Methods for phylogenetic analyses followed Matsui et al. (2010). The PCR cycling, purification, and sequencing procedures were identical to those described by Matsui et al. (2010). The resultant new sequences were deposited in GenBank (LC061221–061223; Table 1). The alignment matrix with 2066

TABLE 1. Sample of East and Southeast Asian bufonid species used for DNA analysis in this study together with the information on voucher, collection locality, and GenBank accession numbers. Voucher abbreviations: BORN=BORNEENSIS Collection, University Malaysia Sabah; KUHE=Graduate School of Human and Environmental Studies, Kyoto University.

Species	Voucher	Locality	GenBank	Reference
<i>Parapelophryne scalpta</i>	KUHE 49653	Hainan, China	LC061221	This study
<i>Parapelophryne scalpta</i>	KUHE 49654	Hainan, China	LC061222	This study
<i>Pelophryne signata</i>	KUHE 53200	Kubah, Sarawak	AB746456	Matsui et al. (2012)
<i>Ansonia penangensis</i>	KUHE UNL	Penang, Malaysia	AB435262	Matsui et al. (2010)
<i>Sabahphrynus maculatus</i>	BORN 08425	Crocker, Sabah	AB331718	Matsui et al. (2007)
<i>Pedostibes hosii</i>	BORN 22088	Tawau, Sabah	AB331717	Matsui et al. (2007)
<i>Leptophryne borbonica</i>	KUHE 53887	Penrissen, Sarawak	AB746458	Matsui et al. (2012)
<i>Ingerophrynus parvus</i>	KUHE 39047	Penang, Malaysia	AB746455	Matsui et al. (2012)
<i>Duttaphrynus melanostictus</i>	KUHE 10524	Marudi, Sarawak	AB331714	Matsui et al. (2007)
<i>Phrynooidis asper</i>	KUHE 39025	Penang, Malaysia	AB746454	Matsui et al. (2012)
<i>Bufo japonicus formosus</i>	KUHE 45512	Shiga, Japan	LC061223	This study
<i>Atelopus flavescens</i>	—	French Guiana	DQ283259	Frost et al. (2006)
<i>Dendrobates auratus</i>	—	—	AY326030	Darst and Cannatella (2004)

nucleotide sites was subjected to estimation of phylogenetic relationships using maximum likelihood (ML) and Bayesian inference (BI). In the BI analysis, two independent runs of four Markov chains were conducted for ten million generations, and the first three million generations were discarded as burn-in. Pairwise comparisons of uncorrected sequence divergences (p-distances) in 16S rRNA were also calculated. Details of these procedures are given in Matsui et al. (2010).

RESULTS

Of 2066 nucleotides generated, 717 were variable, and 394 were parsimony-informative. The best substitution model for ML derived from Kakusan4 (Tanabe, 2011) was the J2 model (Jobb, 2011) with a gamma shape parameter (estimated gamma values were 0.240 for 12S rRNA, 0.471 for tRNA^{val}, and 0.265 for 16S rRNA), and the likelihood value of lnL -13025.376, while for Bayesian analysis it was the general time reversible model (GTR:

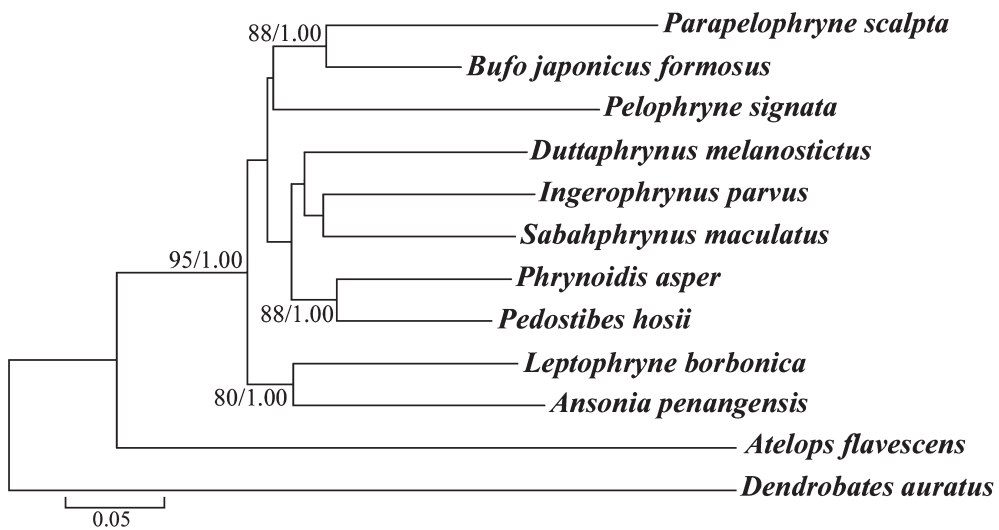


FIG. 1. ML tree from a 2066 bp sequence of mitochondrial 12S rRNA, tRNA^{val} and 16S rRNA genes for *Parapelophryne scalpta* and samples of East and Southeast Asian bufonid species studied. Numbers above or below branches represent bootstrap supports for ML inferences and Bayesian posterior probabilities (ML-BS/BPP). Only ML-BS>70% and BPP>0.95 are shown.

TABLE 2. Uncorrected p-distances (%) in ca. 1200 bp of 16S rRNA among *Parapelophryne scalpta* and samples of East and Southeast Asian bufonid species studied.

	1	2	3	4	5	6	7	8	9	10	11
1 <i>Parapelophryne scalpta</i> KUHE 49653											
2 <i>Bufo japonicus formosus</i> KUHE 45512	13.3										
3 <i>Pelophryne signata</i> KUHE 53200	14.9	12.9									
4 <i>Ansonia penangensis</i> KUHE UNL	16.7	12.7	12.2								
5 <i>Leptophryne borbonica</i> KUHE 53887	14.9	13.2	12.9	12.3							
6 <i>Sabahphrynus maculatus</i> BORN 08425	15.5	11.8	12.9	12.7	13.1						
7 <i>Pedostibes hosii</i> BORN 22088	15.0	11.5	12.4	11.8	11.7	10.5					
8 <i>Phrynooidis asper</i> KUHE 39025	15.4	11.5	13.9	12.7	14.0	11.7	10.0				
9 <i>Ingerophrynus parvus</i> KUHE 39047	14.3	12.1	12.3	12.1	13.2	10.9	11.5	12.0			
10 <i>Duttaphrynus melanostictus</i> KUHE 10524	14.9	11.3	12.5	12.4	12.7	11.3	11.3	12.0	12.1		
11 <i>Atelopus flavescens</i> DQ283259	20.7	17.6	19.3	17.2	17.1	17.8	17.0	18.0	18.0	17.0	
12 <i>Dendrobates auratus</i> AY326030	23.4	21.4	23.1	20.8	22.4	20.9	20.8	20.4	20.9	20.8	20.4

Tavaré, 1986) with a gamma shape parameter (estimated values of 0.267, 0.636, and 0.286, respectively), and the likelihood value of $\ln L$ -13049.567.

Phylogenetic analyses employing two different optimality criteria yielded similar topologies with respect to significantly supported branches, and only the ML tree is presented in Fig. 1. Monophyly of Asian bufonid genera with respect to *Atelopus* and *Dendrobates* was supported (ML BS=95%, BPP=1.00). Relationships among bufonid genera are generally unresolved and seven lineages were recognized. Of these, each of *Parapelophryne* and *Bufo* (ML BS=88%, BPP=1.00), *Phrynoidis* and *Pedostibes* (ML BS=88%, BPP=1.00), and *Leptophryne* and *Ansonia* (ML BS=80%, BPP=1.00) formed a clade. From the other species employed, *Parapelophryne* exhibited substantially large uncorrected p-distances in 16S rRNA, ranging from 13.3% (between *Bufo*) to 16.7% (between *Ansonia*). This minimum value was exceeded only by those between *Phrynoidis* and *Pelophryne* (13.9%) or *Phrynoidis* and *Leptophryne* (14.0%) (Table 2), and indicated distinct generic status of *Parapelophryne* among East and Southeast Asian bufonids.

DISCUSSION

Parapelophryne scalpta was originally described by Liu and Hu (1973) as a member of *Nectophryne*, because the authors considered the species to be allied to some small Southeast Asian bufonids, and after consulting old literature (Boulenger, 1882; Noble, 1931), the authors treated it as *Nectophryne*, which is confined to Central to West Africa (Frost, 2015), far from Hainan.

Because Barbour (1938) already split Southeast Asian *Pelophryne* from African *Nectophryne* and the subsequent authors followed this idea (Inger, 1954, 1960), Ye and Fei (1978) moved the species to *Pelophryne* based on general similarity between them, while noting presence of important differences including the number of presacral vertebrae

(Fei, 1999).

The genus *Pelophryne* occurs in the Malay Peninsula, Borneo, and the Philippines (Frost, 2015), and no species has been found in the Indochina region, which is intervening Hainan and Malaysia. None of 11 species currently known is similar in external morphology to the Chinese species. Fei et al. (2003) made a morphological study, including detailed osteological and myologic observations, and by comparing data their own and others (e.g., Inger, 1960; McDiarmid, 1971), they erected the new genus *Parapelophryne* to differentiate the species from the other named species.

In this way, the genus was erected purely on the basis of morphological information, considered to have limited utility in estimating phylogenetic relationships (e.g., Hillis and Wiens, 2000; Wiens, 2004). Our results rejected some previously reported relationships such as the clade of *Pelophryne* and *Ansonia* (Matsui et al., 2012), while supporting the clade of *Phrynoidis* and *Pedostibes* as in previous reports. Our results confirmed distinct generic status of *Parapelophryne*, yet indicated its sister generic relationships not to any Southeast Asian genus but to East Asian *Bufo*. This is surprising, because the two genera differ greatly in morphology and ecology (Fei et al., 2003), and occur in regions apart from each other (Fei, 1999).

Members of *Bufo* occur mainly in temperate regions, but some species like *B. cryptotympanicus* Liu and Hu, 1962 and *B. aspinus* (Rao and Yang, 1994) are recorded from southern China and/or northern Vietnam, nearer to Hainan (Fei et al., 2012). However, because these species are not distantly related genetically to *B. japonicus* studied here (Liu et al., 2000; Pyron and Wiens, 2011), examination of relationships between *Parapelophryne* and *Bufo* from southern China is expected to confirm our results. Future studies including South- and East Asian genera not treated here (*Adenomus* Cope, 1861; *Bufooides* Pillai and Yazdani, 1973; *Bufo* Rafinesque, 1814; *Epidalea* Cope, 1864; *Ghatophryne* Biju, Van Bocxlaer, Giri, Loader, and Bossuyt, 2009;

Pseudobufo Tschudi, 1838; *Strauchbufo* Fei, Ye, and Jiang, 2012; and *Xanthophryne* Biju, Van Bocxlaer, Giri, Loader, and Bossuyt, 2009) would be more fruitful. Such studies might change our conclusion because their great morphological and ecological differences from *Parapelophryne* may be superficial, thus masking phylogenetic relationships.

ACKNOWLEDGMENTS

We thank Hainan Forestry Department for their cooperation and assistance, J.-P. Jiang and H. Ota for supplying valuable information, T. Tanaka-Ueno for laboratory assistance, and two reviewers for improving the manuscript. This research was supported partly by a Grant-in Aid from the Monbusho through the JSPS (Field Research, No. 23405014) to M. Matsui, and Postdoctoral Program of Japan Society for the Promotion of Science (JSPS) to W.-Z. Liu.

LITERATURE CITED

- BARBOUR, T. 1938. Notes on *Nectophryne*. *Proceedings of the Biological Society of Washington* 51: 191–196.
- BOULENGER, G. A. 1882. *Catalogue of the Batrachia Salientia s. Ecaudata in the Collection of the British Museum. Second Edition*. Taylor and Francis, London.
- DARST, C. R. AND CANNATELLA, D. C. 2004. Novel relationships among hyloid frogs inferred from 12S and 16S mitochondrial DNA sequences. *Molecular Phylogenetics and Evolution* 31: 462–475.
- FEI, L. (Ed.) 1999. *Atlas of Amphibians of China*. Henan Press of Science and Technology, Zhengzhou.
- FEI, L., YE, C.-Y., AND JIANG, J.-P. 2003. A new bufonid genus *Parapelophryne* from China (Amphibia, Anura). *Acta Zootaxonomica Sinica* 28: 762–766.
- FEI, L., YE, C.-Y., AND JIANG, J.-P. 2012. *Colored Atlas of Chinese Amphibians and Their Distributions*. Sichuan Publishing House of Science and Technology, Chengdu.
- FEI, L., YE, C.-Y., HUANG, Y.-Z., JIANG, J.-P., AND XIE, F. 2005. *An Illustrated Key to Chinese Amphibians*. Sichuan Publishing House of Science and Technology, Chongqing.
- FROST, D. R. (Ed.) 1985. *Amphibian Species of the World. A Taxonomic and Geographical Reference*. Association of Systematics Collections and Allen Press, Lawrence.
- FROST, D. R. 2015. *Amphibian Species of the World: An Online Reference, version 6.0*. American Museum of Natural History. <http://research.amnh.org/herpetology/amphibia/index.php> (accessed 7 June 2015)
- FROST, D. R., GRANT, T., FAIVOVICH, J. N., BAIN, R. H., HAAS, A., HADDAD, C. F. B., DE SÁ, R. O., CHANNING, A., WILKINSON, M., DONNELLAN, S. C., RAXWORTHY, C. J., CAMPBELL, J. A., BLOTTO, B. L., MOLER, P., DREWES, R. C., NUSSBAUM, R. A., LYNCH, J. D., GREEN, D. M., AND WHEELER, W. C. 2006. The amphibian tree of life. *Bulletin of the American Museum of Natural History* 297: 1–370.
- HILLIS, D. M. AND WIENS, J. J. 2000. Molecules versus morphology in systematics: conflicts, artifacts, and misconceptions. p. 1–19. In: J. J. Wiens (ed.), *Phylogenetic Analysis of Morphological Data*. Smithsonian Institution Press, Washington.
- INGER, R. F. 1954. Systematics and zoogeography of Philippine Amphibia. *Fieldiana: Zoology* 33: 183–531.
- INGER, R. F. 1960. Notes on toads of the genus *Pelophryne*. *Fieldiana: Zoology* 39: 415–418.
- INGER, R. F. 1966. The systematics and zoogeography of the Amphibia of Borneo. *Fieldiana: Zoology* 52: 1–402.
- JOB, G. 2011. TREEFINDER version of March 2011. Available via <http://www.treefinder.de>.
- LIU, C.-C., HU, S.-Q., FEI, L., AND HUANG, C.-C. 1973. On collections of amphibians from Hainan Island. *Acta Zoologica Sinica* 19: 385–404.
- LIU, W.-Z., LATHROP, A., FU, J.-Z., YANG, D.-T., AND MURPHY, R. W. 2000. Phylogeny of East Asian bufonids inferred from mitochondrial DNA sequences (Anura: Amphibia). *Molecular Phylogenetics and Evolution* 14: 423–435.
- MATSUI, M., NISHIKAWA, K., YEO, S. T., AND ETO,

- K. 2012. Notes on a rare Bornean bufonid *Ansonia latidisca* Inger, 1966, with special reference to its phylogenetic position. *Current Herpetology* 31: 87–96.
- MATSUI, M., TOMINAGA, A., LIU, W.-Z., KHONSUE, W., GRISMER, L. L., DIESMOS, A. C., DAS, I., SUDIN, A., YAMBUN, P., YONG, H.-S., SUKUMARAN, J., AND BROWN, R. M. 2010. Phylogenetic relationships of *Ansonia* from Southeast Asia inferred from mitochondrial DNA sequences: Systematic and biogeographic implications (Anura: Bufonidae). *Molecular Phylogenetics and Evolution* 54: 561–570.
- MATSUI, M., YAMBUN, P., AND SUDIN, A. 2007. Taxonomic relationships of *Ansonia anotis* Inger, Tan, and Yambun, 2001 and *Pedostibes maculatus* (Mocquard, 1890), with a description of a new genus (Amphibia, Bufonidae). *Zoological Science* 24: 1159–1166.
- MCDIARMID, R. W. 1971. Comparative morphology and evolution of frogs of the neotropical genera *Atelopus*, *Dendrophryniscus*, *Melanophryniscus* and *Oreophrynella*. *Bulletin of the Los Angeles County Museum of Natural History* 12: 1–66.
- NOBLE, G. K. 1931. *The Biology of the Amphibia*. McGraw-Hill, New York and London.
- PYRON, R. A. AND WIENS, J. J. 2011. A large-scale phylogeny of Amphibia with over 2,800 species, and a revised classification of extant frogs, salamanders, and caecilians. *Molecular Phylogenetics and Evolution* 61: 543–583.
- TANABE, A. S. 2011. Kakusan4 and Aminosan: two programs for comparing nonpartitioned, proportional and separate models for combined molecular phylogenetic analyses of multilocus sequence data. *Molecular Ecology Notes* 11: 914–921.
- TAVARÉ, S. 1986. Some probabilistic and statistical problems in the analysis of DNA sequences. p. 57–86. In: R. M. Miura (ed.), *Some Mathematical Questions in Biology—DNA Sequence Analysis*. American Mathematical Society, Providence, Rhode Island.
- WIENS, J. J. 2004. The role of morphological data in phylogeny reconstruction. *Systematic Biology* 53: 653–661.
- YE, C.-Y. AND FEI, L. 1978. Discussion on Chinese species and genus of the family Bufonidae. *Materials Herpetological Research* 4: 32–35.

Accepted: 22 June 2015