

京都大学構内遺跡調査研究年報 1989～1991年度

図 版

- 1 京都大学吉田キャンパスの地区割と調査地点
- 2～12 京都大学病院構内 AH19 区の発掘調査
- 13～16 京都大学病院構内 AE12・AE13 区の発掘調査

Y=1500 (構内座標)
y=-20500 (国土座標)

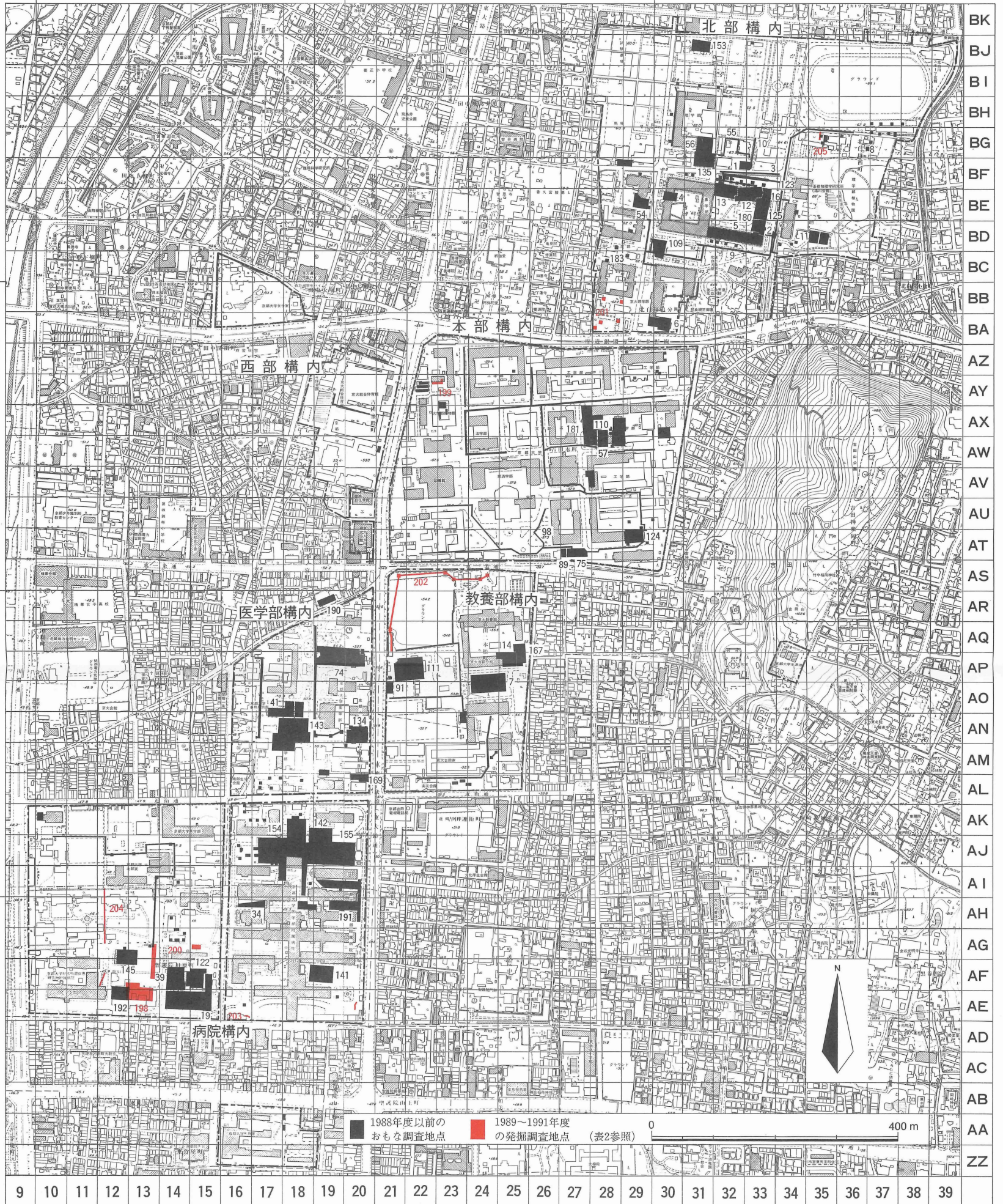
Y=2000
y=-20000

Y=2500
y=-19500

X=2000 (構内座標)
x=-108000 (国土座標)

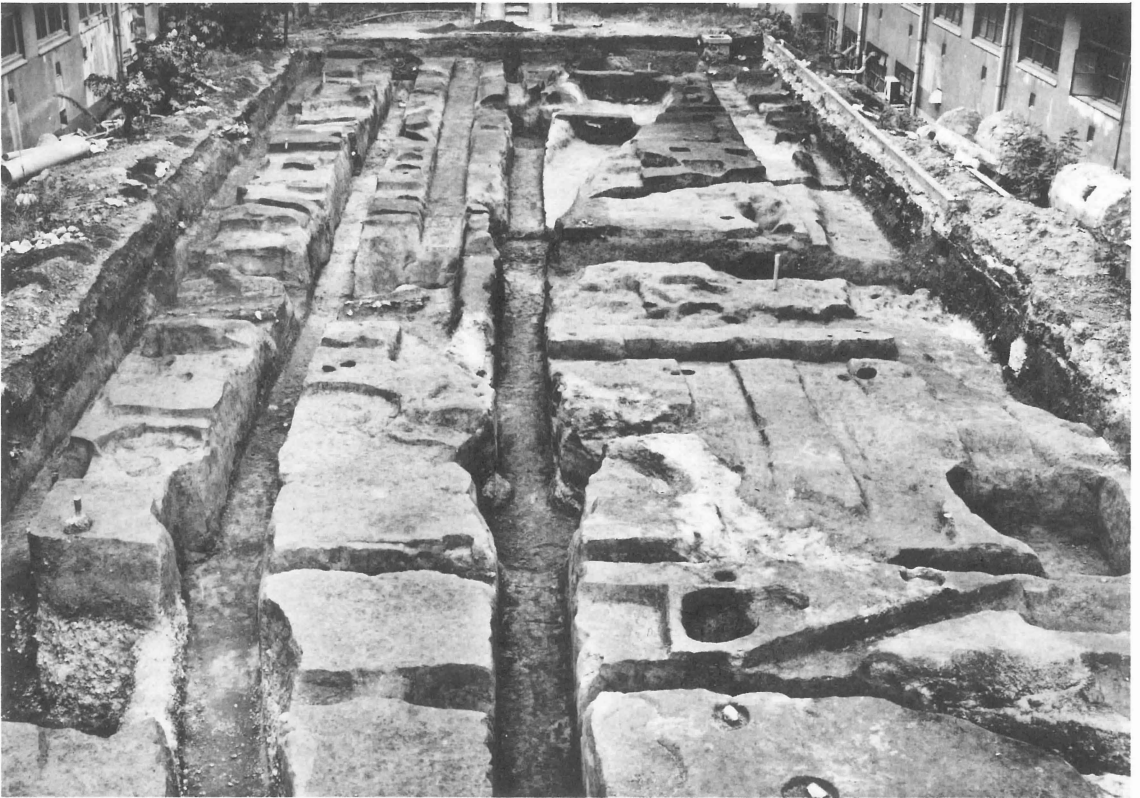
X=1500 (構内座標)
x=-108500 (国土座標)

X=1000 (構内座標)
x=-109000 (国土座標)

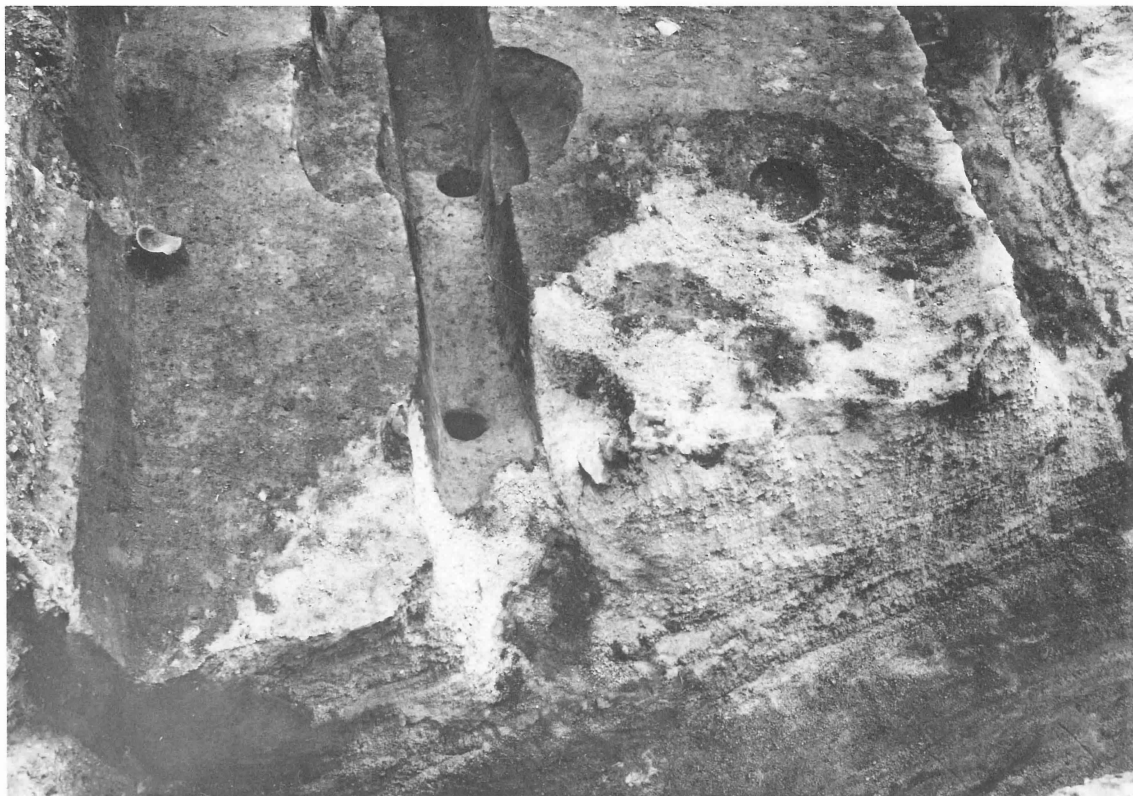




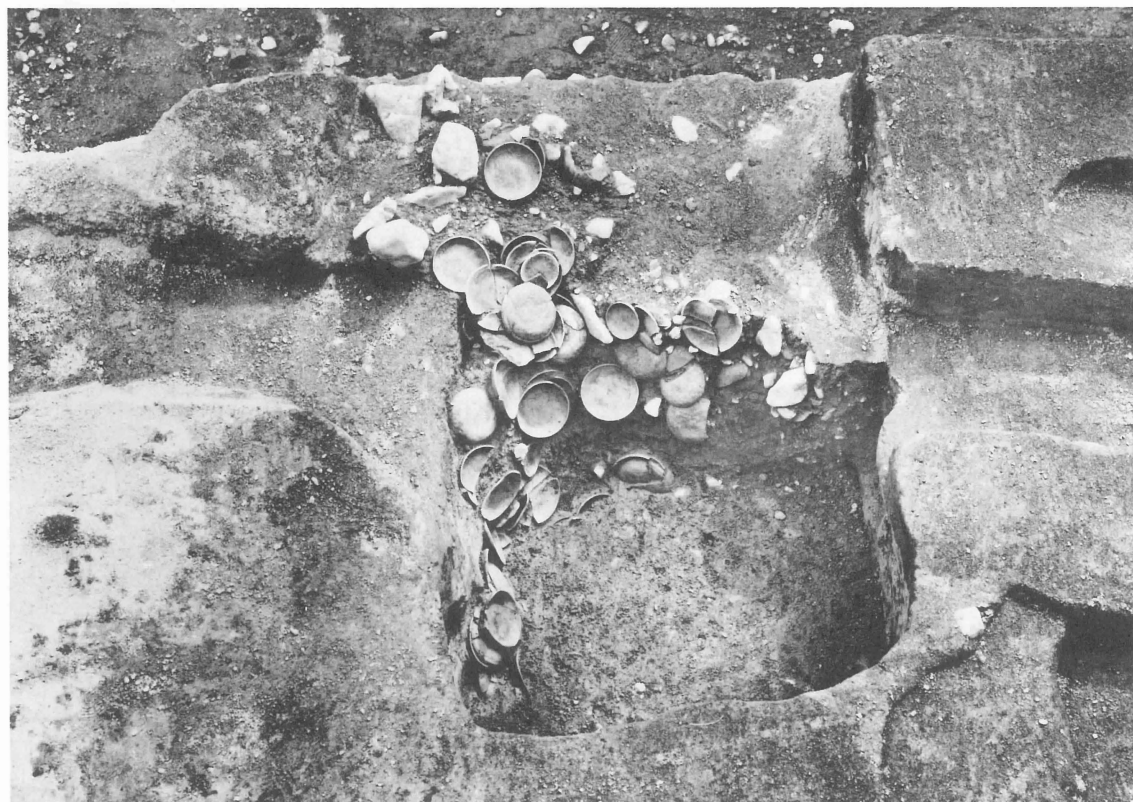
1 調査区北部全景（東から）



2 調査区南部全景（東から）



1 土坑SK22 (北から)



2 土坑SK3 遺物出土状況 (北から)



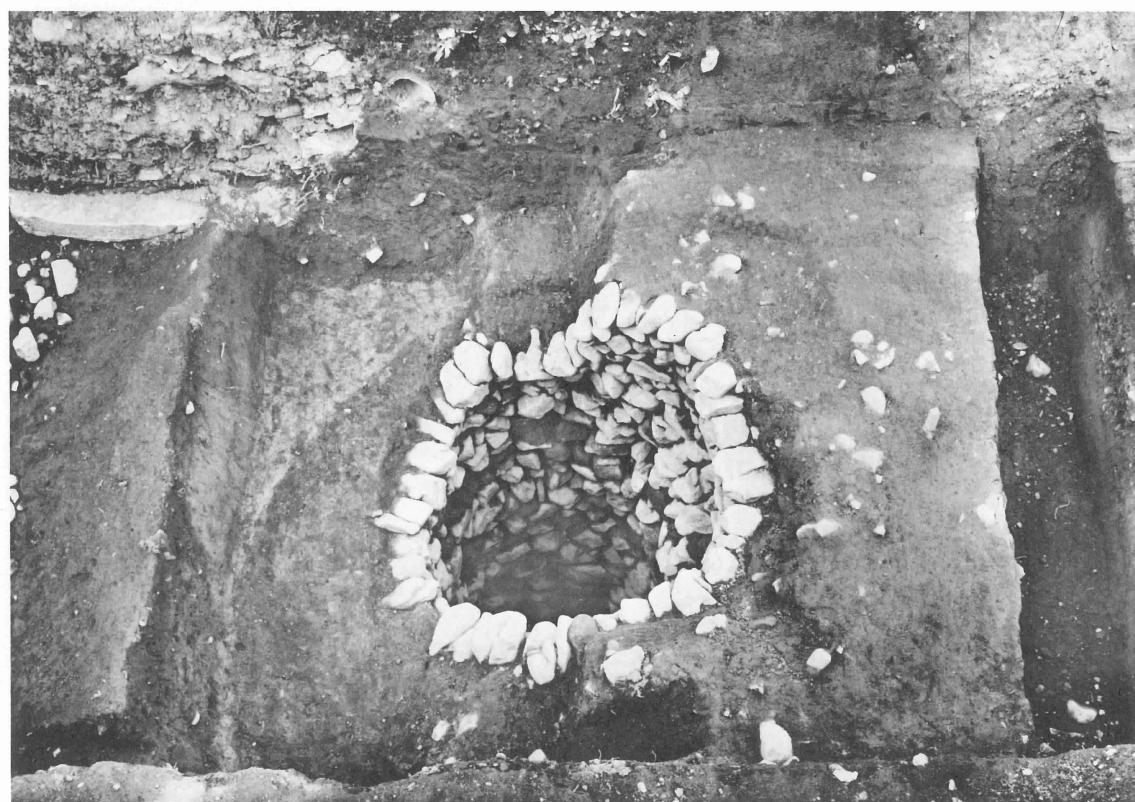
1 土坑SK 6 遺物出土状況 (南から)



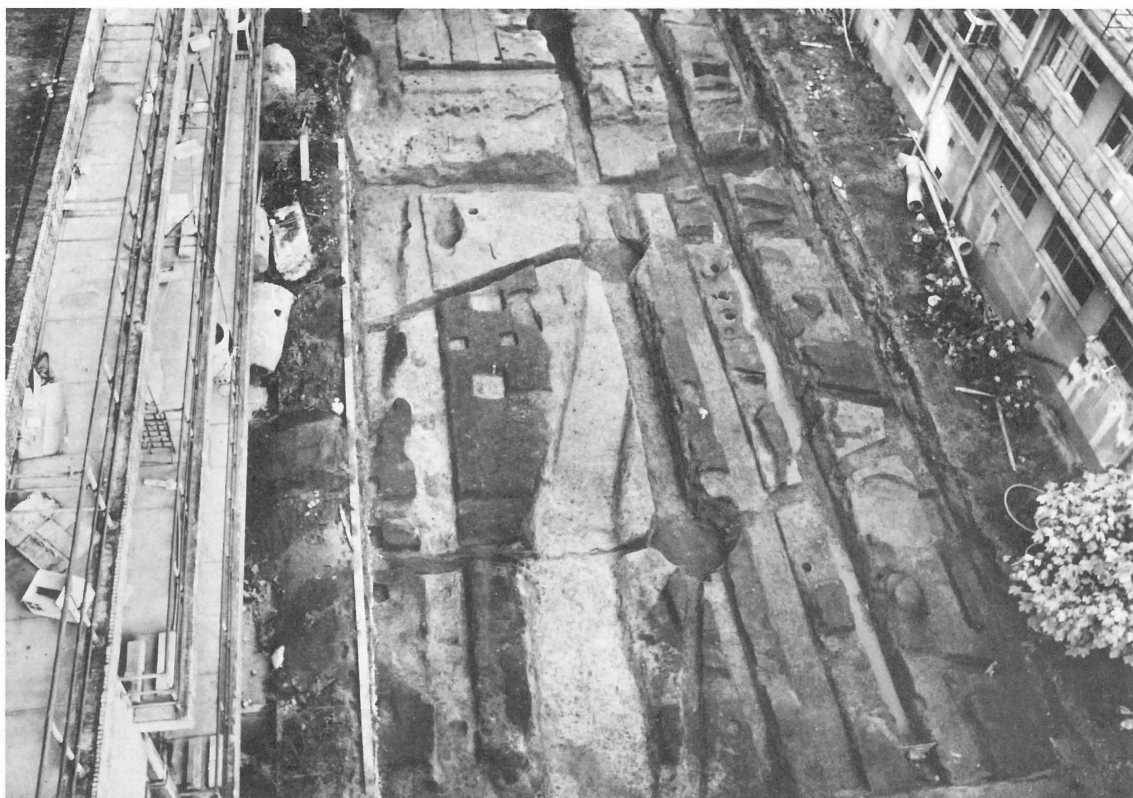
2 溝SD 5 (東から)



1 井戸SE1 (北から)



2 井戸SE2 (東から)



1 溝SD20～SD23 (西から)



2 溝SD20埋積状況 (東から)



II 5



II 13



II 7



II 14



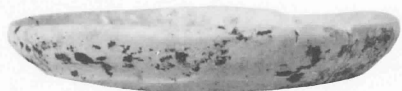
II 17



II 15



II 18



II 20



II 22

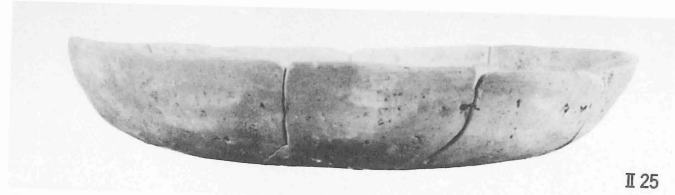


II 21



II 23

SK22出土遺物(II 5・II 7須恵器), SK 3 出土遺物(II 14・II 15・II 17・II 18・II 20・II 21土師器, II 22・II 23瓦器), SR 2 出土遺物(II 13須恵器)



II 25



II 27



II 28



II 30



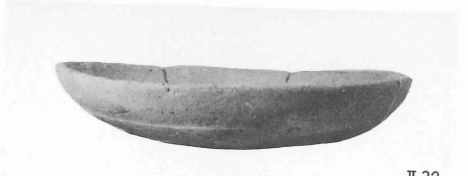
II 31



II 42



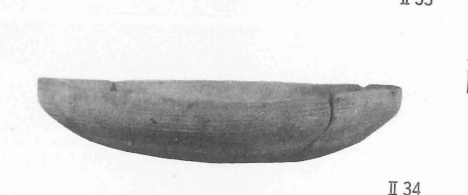
II 43



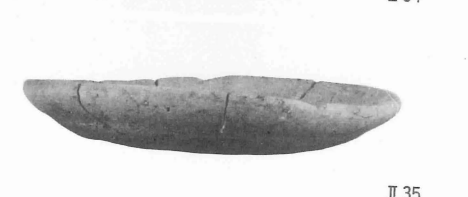
II 32



II 33



II 34



II 35



II 36



II 40



II 51

SK 6 出土遺物(II 25・II 27・II 28・II 30・II 31~II 36土師器, II 40・II 42・II 43瓦器, II 51白磁)



|



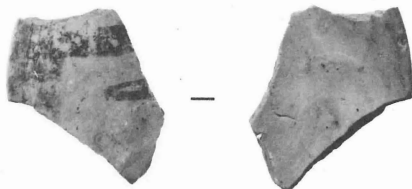
II 55



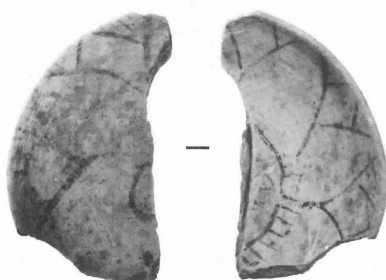
|



II 58



II 57



II 56



II 59



II 61



II 60



II 62

墨書土器(II 55SK 3, II 56~II 58SK 6), SK23出土遺物(II 59~II 62土師器)



II 67



II 70



1/3

II 68



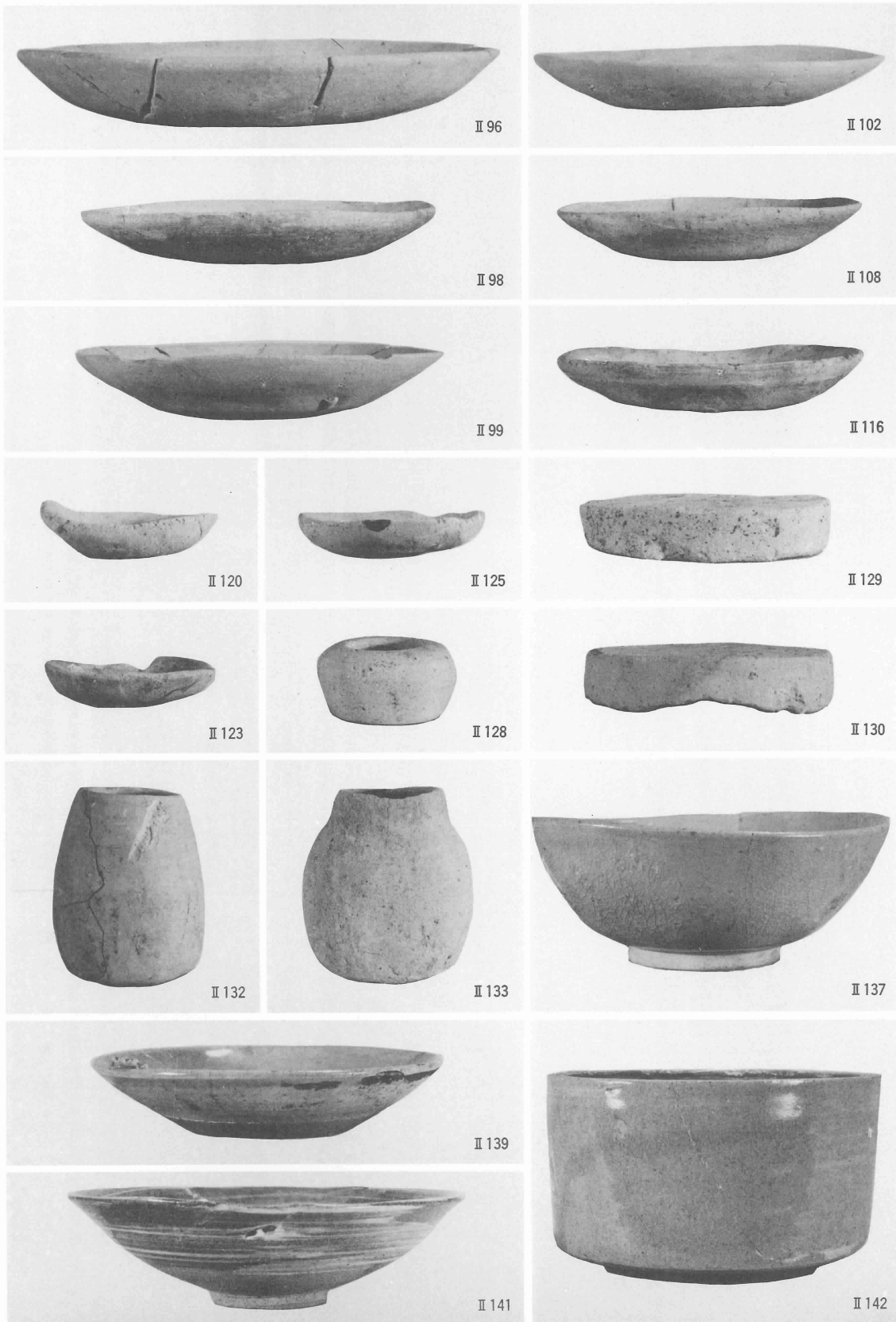
1/3

II 87



II 94

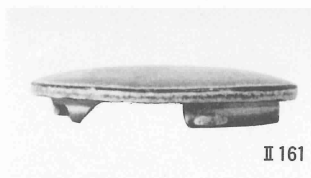
SK43出土遺物(II 67青磁, II 68瓦器), SK20出土遺物(II 70土師器),
SD 5 出土遺物(II 87陶器), SR 2 出土遺物(II 94鉄製犁先)



SD22出土遺物(II 96・II 98・II 99・II 102・II 108・II 116・II 120・II 123・II 125・II 128土師器,
II 129・II 130・II 132・II 133焼塩壺, II 137・II 139・II 141・II 142陶器)



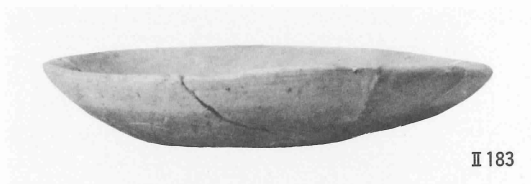
II 151



II 161



II 159



II 183



II 185



II 145



II 174



II 146



II 175



II 148



II 176



II 173



II 179

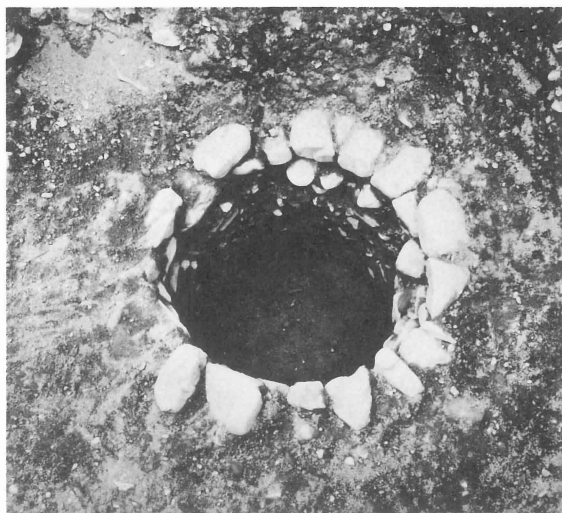
SD22出土遺物(II 145・II 146・II 148染付), SD23出土遺物(II 151土師器, II 159焼塩壺, II 161陶器, II 173~II 176・II 179染付), SD24出土遺物(II 183・II 185土師器)



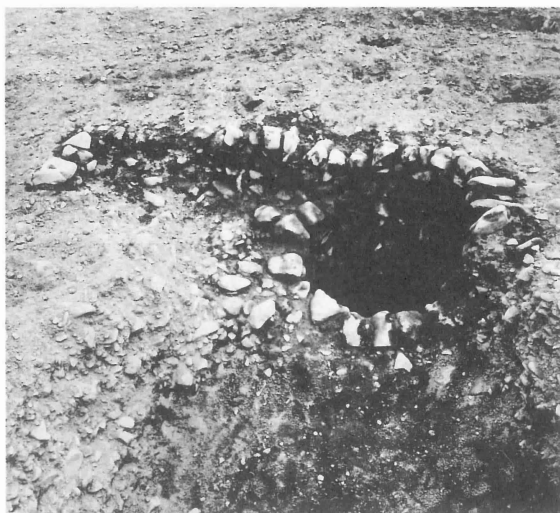
1 AE12区西半の遺構 (南から)



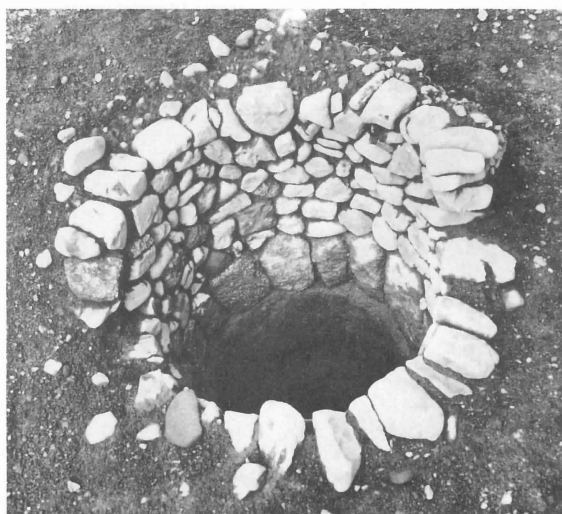
2 AE13区西半の遺構 (北から)



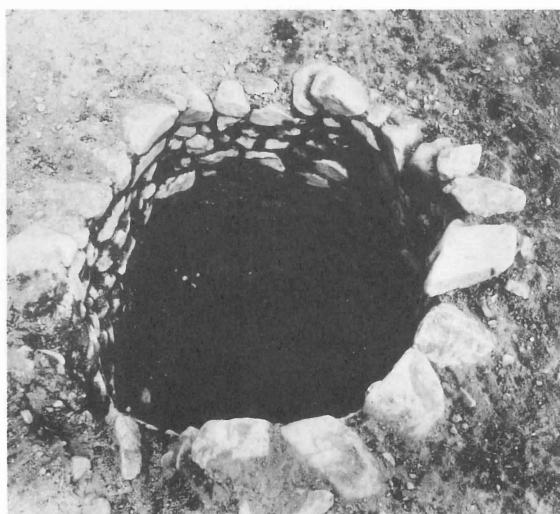
1 井戸SE25 (東から)



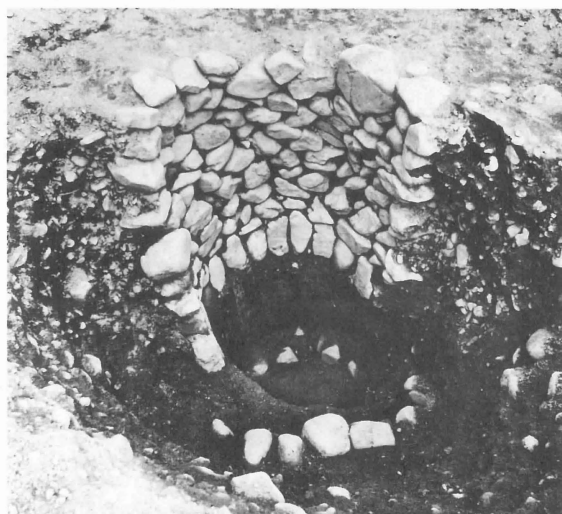
2 井戸SE18 (西から)



3 井戸SE11 (南から)



4 井戸SE21 (南から)



5 井戸SE22 (南から)



6 井戸SE8 (南から)



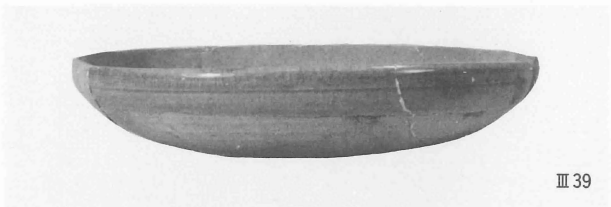
Ⅲ 55



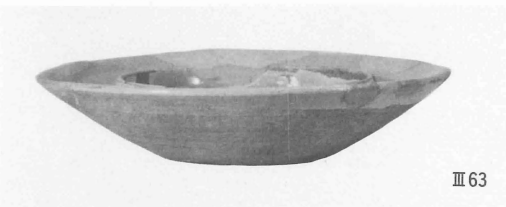
Ⅲ 56



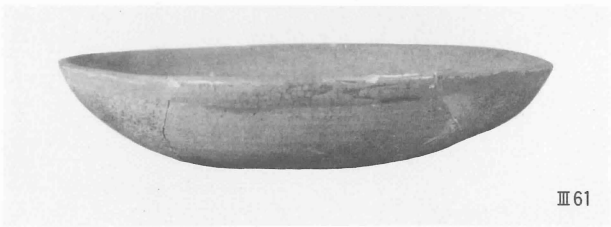
Ⅲ 38



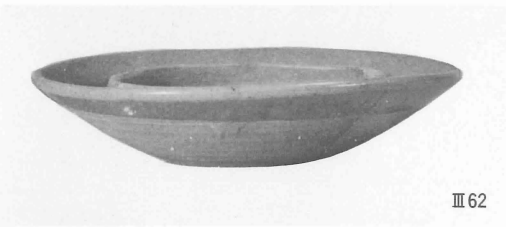
Ⅲ 39



Ⅲ 63



Ⅲ 61



Ⅲ 62



Ⅲ 67



Ⅲ 6



Ⅲ 48

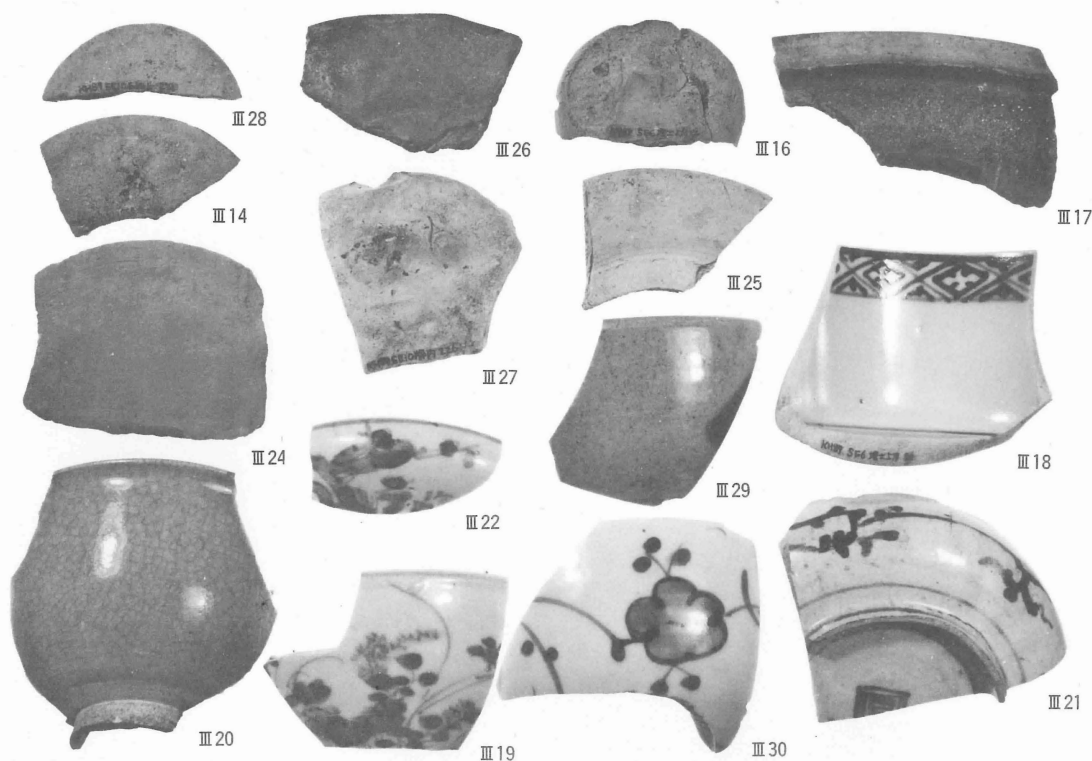


Ⅲ 43

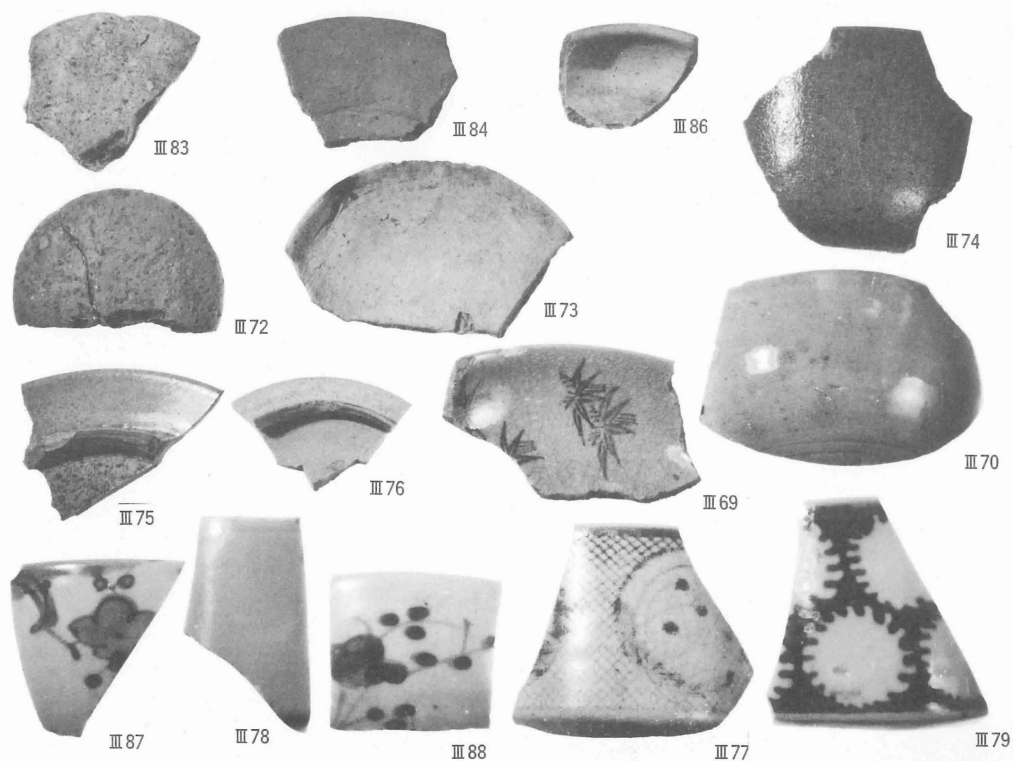


Ⅲ 42

SE 2 出土遺物(Ⅲ 6 染付), SE 4 出土遺物(Ⅲ 38土師器, Ⅲ 39陶器, Ⅲ 42・Ⅲ 43染付), SE15出土遺物(Ⅲ 48染付), SE16出土遺物(Ⅲ 55・Ⅲ 56土師器, Ⅲ 61～Ⅲ 63陶器, Ⅲ 67染付)



1 SE 1 出土遺物(Ⅲ14・Ⅲ16・Ⅲ17土師器, Ⅲ18陶器, Ⅲ19～Ⅲ22染付),
SE 5 出土遺物(Ⅲ24～Ⅲ28土師器, Ⅲ29陶器, Ⅲ30染付)



2 SE26出土遺物(Ⅲ69・Ⅲ70陶器), SE24出土遺物(Ⅲ72・Ⅲ73土師器, Ⅲ74～Ⅲ76陶器,
Ⅲ77～Ⅲ79染付), SE27出土遺物(Ⅲ83・Ⅲ84・Ⅲ86土師器, Ⅲ87・Ⅲ88染付)