

Outline of the Kyoto University Library Network

2019

2020



Message from the Director-General

Director-General
Kyoto University Library Network
Takashi Hikihara, Ph.D.



Since its foundation in 1897, Kyoto University has been a leading university in promoting world-class knowledge with the commitment to cultivate academic freedom. The Kyoto University Library has supported the educational and research activities of the University since it was established in 1899, two and a half years after the foundation of the University.

The Kyoto University Library has played a central role in the accumulation of intellectual property as well as the creation of academic and scientific information in support of the University's basic educational principle: the promotion of independent and interactive learning. Meanwhile, as new faculties, graduate schools, research institutes and departments were established, each of them independently created new libraries to collect and provide materials essential for education and research in each disciplinary area of study. The Kyoto University Library has thus developed as a composite comprised of a main library as well as several other libraries. At present, the total number of books in our holdings amounts to 7.10 million, which makes us—after the National Diet Library and the University of Tokyo Library—the third largest library in Japan. Moreover, our rare books holdings include one designated National Treasure and 40 Important Cultural Properties.

After undergoing university organizational and institutional reform under the National University Corporation Act in 2004, our entire library system (including the Main Library) was reorganized as the Kyoto University Library Network in April 2005. The academic infrastructure coordinated by the

Kyoto University Library Network provides an environment to read and make use of both printed and digital resources including online journals and databases, e-books, and other digital materials essential for keeping abreast of real-time developments for education and research in all academic disciplines. Furthermore, we reassessed our functional capabilities as a place to study and hence established the Learning Commons as an active learning area oriented to a more assertive educational approach, as university libraries around the world are constantly revolutionizing. The Kyoto University Library Network will continue to examine and enforce the task of assigning university-wide functional operations in the Area-Focus Hub Libraries as declared in our Future Vision announced in 2009, operate in ways that support education and research from a more user-oriented perspective, and must strive to fulfill our responsibility of facility management and upgrading study environments. Our budget request to build a new library on the Katsura Campus has been approved in December 2016, and we are in the process of preparing for its inauguration scheduled in spring 2020. This new library will transcend the traditional role of the library and is expected to serve as a base for global innovation centered on Kyoto University's achievements in the fields of engineering and science and technology.

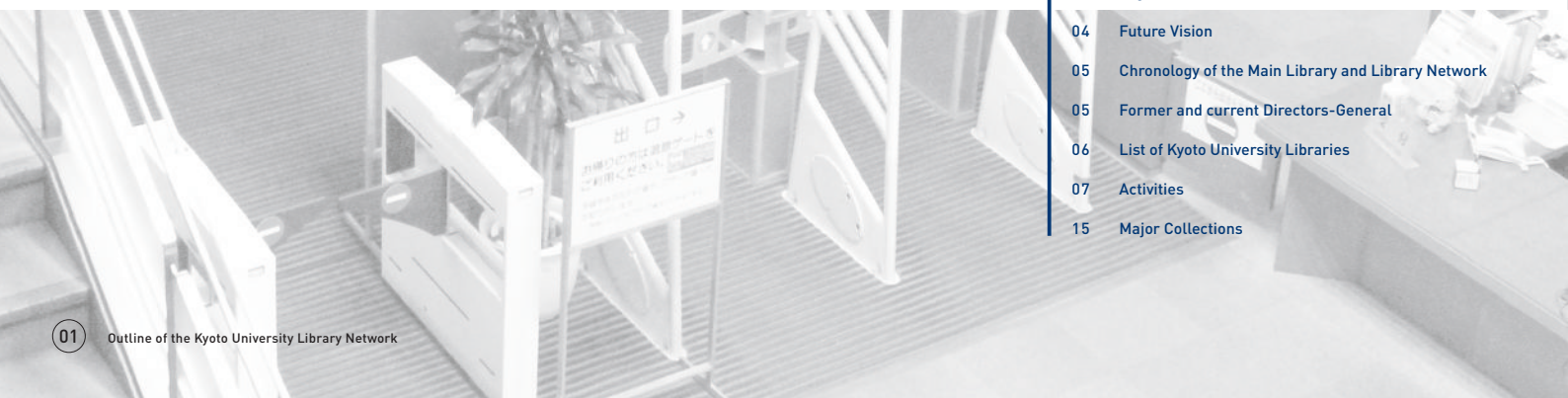
On the other hand, academic libraries today are transforming into liaisons for universities to publicly release their research achievements to the world. In April 2015, Kyoto University approved the Kyoto University Open Access Policy, which, in principle,

mandates the online publication of research results (such as academic papers by Kyoto University faculty members) via the Kyoto University Research Information Repository (KURENAI) operated by the Kyoto University Library Network as the responsibility of individual faculty members. Allowing open access to research findings will inspire researchers to collaborate with one another, greatly influencing possible breakthroughs for new discoveries that transcend research fields, and at the same time clarifies the social accountability of those engaged in academic research. In order to further publicize the university's academic accomplishments, the Open Access Promotion Project has been implemented since academic year 2016 as one of the measures stated in the Kyoto University Priority Strategic Action Plan 2016-2021, and the enhancement of research infrastructures for the humanities and social sciences has been achieved by digitally archiving primary sources. In September 2017, the Kyoto University Rare Materials Digital Archive was released to enable users to browse electronic images that are compliant with the International Image Interoperability Framework (IIIF), and the Kyoto University Rare Materials Digital Archive Fund was established in July 2018.

We will continue to make our best effort to enhance the library network that is best suitable to Kyoto University, while revising its functions in accordance with the changing times. We would sincerely appreciate your kind understanding and cooperation.

CONTENTS

- 01 Message from the Director-General
- 02 Mission Statement
- 03 Organization
- 04 Future Vision
- 05 Chronology of the Main Library and Library Network
- 05 Former and current Directors-General
- 06 List of Kyoto University Libraries
- 07 Activities
- 15 Major Collections



Mission Statement

The mission of the Kyoto University Library Network is to provide a first-rate academic and information infrastructure that is consistent with Kyoto University's Mission Statement and worthy of an educational and research center that ranks as one of the highest in the world. The Library Network will do its utmost to support the teaching and research objectives of the University, and to collect, classify and preserve academic information resources and newly created intellectual knowledge, the intellectual property of mankind, to enable the University to contribute to the academic community both in Japan and internationally. It will also endeavor constantly to offer the highest-quality and most advanced information service possible. Hence, the Kyoto University Library Network strives to achieve the following objectives.



1 Meeting the needs of students, faculty, and staff

To place maximum priority on support of teaching and research, grasping and responding to the needs of students, faculty, and staff, and ensuring that all libraries in the University Network perform in a thoroughly effective manner.

2 Gathering academic information

To develop our library collections and information services as part of our academic information infrastructure, selecting appropriate materials and resources, collecting and classifying them, and striving always, with appropriate research and development, to make them readily accessible.

3 Accumulating and publicizing intellectual achievements

To record and disseminate the outstanding, world-ranking intellectual achievements that take place regularly at Kyoto University.

4 Preserving intellectual properties

To equip and maintain frameworks for the management and preservation of human intellectual property possessed by Kyoto University to ensure its accessibility for the future.

5 Building support systems

To build high-quality user-orientated systems that help users to access and utilize academic information.

6 Enhancing staff competency, equipment, and facilities

To continue to improve our facilities and equipment, and to enhance the skills and commitment of our all staff members, so that our users can access academic information in a pleasant and inspiring study environment.

7 Strengthening mutually cooperative relationships

To strengthen the partnerships both between the libraries in our Network and with related departments and organizations in the University.

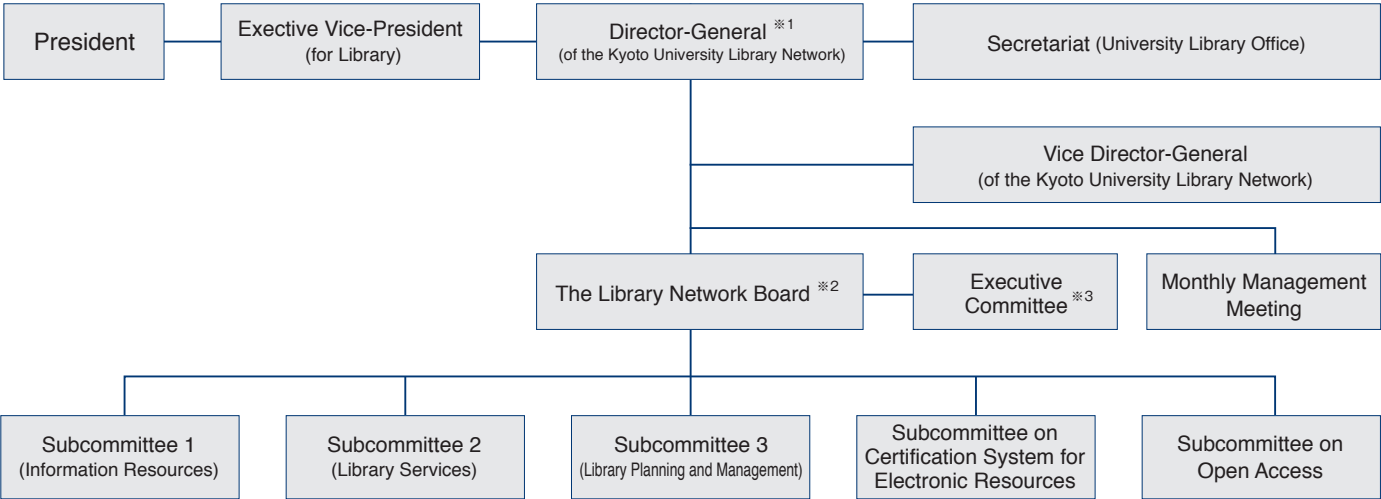
8 Coordinating with libraries at home and abroad

To form networks with other libraries both in Japan and internationally in order to collaborate with them, and to contribute to our localities and society at large.

Organization

Kyoto University has more than 50 libraries. These include its main library on the main campus, but also a great number of other, smaller departmental libraries and libraries a–liated with institutes. Each one of these libraries engages in collecting and collating books, journals, and other materials in accordance with its particularld, and strives to provide a comfortable, helpful learning environment. The Kyoto University Library Network was launched in April 2005, and its purpose is to provide a comprehensive, effective, cross-universityframework for collaboration on issues that require inter-departmental cooperation and coordination.

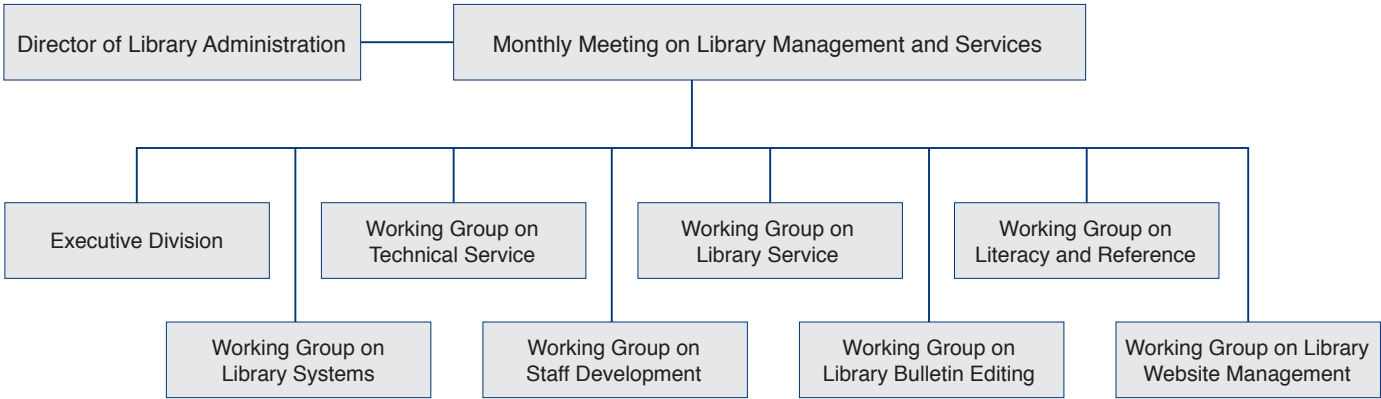
Organization Chart



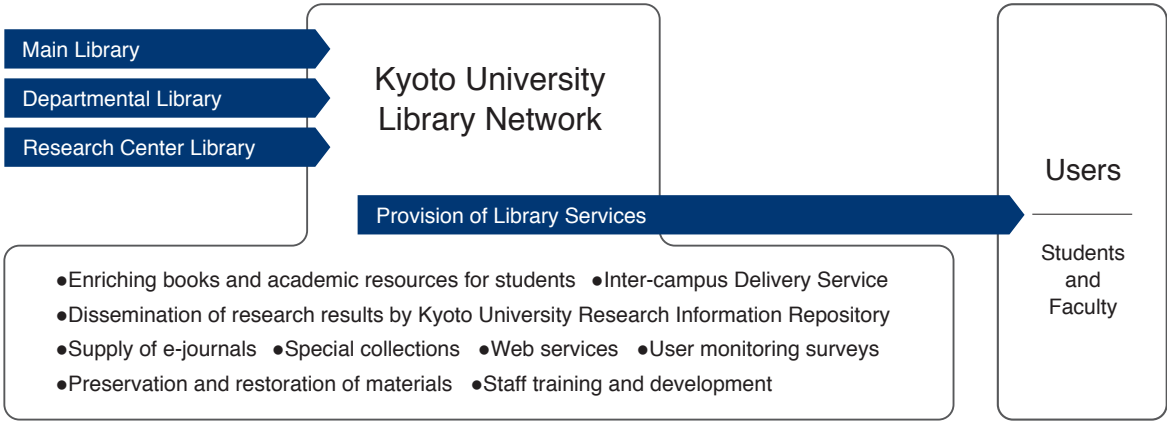
※ 1 : Director-General serving as Main Library Director

※ 2 : Configuration of the Library Network Board
The Library Network Board is administrated by a Director-General (Chairman), an Executive Vice-President (for Library), a Vice Director-General, Uji Library Director, representatives from departments, and other faculty and staff approved by the President.

※ 3 : Executive Committee
The Executive Committee is administrated by a Director-General, an Executive Vice-President (for Library), a Vice Director-General, Uji Library Director, subcommittee chairman, Director of Library Administration and Professor deemed necessary by a Director-General.



Function Chart



Future Vision

Future Vision of Kyoto University Library Network (Revised in February 2016)
<https://www.kulib.kyoto-u.ac.jp/modules/about/content/plan20160218.pdf> (Japanese version only)



The Future Vision outlines the goals and defines the business objectives for the libraries of Kyoto University over the next 10 years, on the basis of what is laid out in the Mission Statement. It was approved on December 18, 2009 by the Library Network Board. Moreover, in February 2016 we revised the vision to correspond with the current circumstances, having verified the changes in the environment surrounding the libraries since the formulation of the original vision, and having clarified the points that have not been sufficiently achieved and the challenges to be overcome in the future.

Library Network

Roles of the Library Network

- Planning, coordination and implementation pertaining to the university-wide functional operations of the Library Network
- Securing financial resources and administering budgets related to the Library Network
- Coordinating the university-wide allocation of library staff
- Professional development of library staff
- Collaborating with on-campus, regional, national and overseas partners

Examples of university-wide functions

Supporting Function for Advanced Education
 First-year experience support, specialized education support (including educational support for research integrity), university-wide coordination of information literacy education

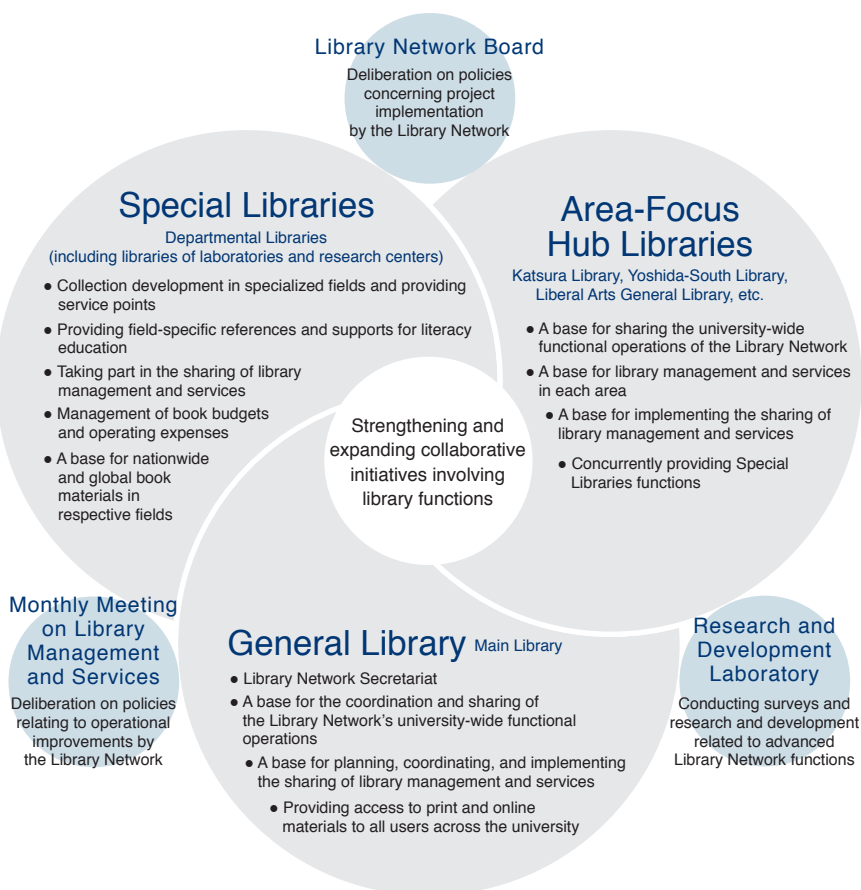
Function to disseminate research results
 Construction of a repository of academic information, and the promotion of open access/open science

Function to facilitate the use of research results in humanities
 University-wide coordination of the collection and management of rare materials, construction of digital libraries, promotion of the restoration and digitization of materials

Function to support the creation of leading-edge science
 University-wide coordination of the provision and management of digital resources (e.g., electronic journals, databases, e-books), university-wide periodicals center

Shared storage function
 A storage base for science and engineering materials (including the National Center for Overseas Periodicals), a storage base for humanities and social sciences materials (including the Cataloging Center)

Library Network's administrative headquarters function
 Coordination of university-wide library administration affairs, systems management base, external coordination



Four Basic Goals

1. To develop networks among all the university libraries.
2. To strengthen the teamwork and cooperation of the library staff by enhancing their competence, with the aim of increasing staff effectiveness.
3. To secure stable sources of funding and build up collections in a systematic manner.
4. To carry out quantitative and qualitative improvements to library facilities.

Four-Year Business Objectives (2016-2019)

1. Development of academic information resources by securing funding and building up collections
2. Improvement of library services by developing the campus wide library network
3. Dissemination of intellectual achievements by ensuring smooth running of Kyoto University Research Information Repository
4. Preservation and increased access of intellectual legacy by restoring and digitizing materials and providing online access to them, as well as equipping the deposit library
5. User support provided by systems and staff members
6. Human resources development by training and further collaboration among library staffs
7. Enhancement of organization by improving functionality and collaboration within the Library Network
8. Promotion of outreach activities by contributing to the community and engaging in exchanges with other institutions

Third Medium-Term Goals and Plans (2016-2021)

National University Corporation Kyoto University Medium-Term Goals and Plans
http://www.kyoto-u.ac.jp/ja/about/operation/medium_target/medium_target (Japanese version only)

We will pursue initiatives on the basis of plans formulated by Kyoto University for the third medium-term goal period.

1. We will enrich the libraries' collections, e-journals, and databases by collecting materials suited to the distinctive features of the education programs. We will also develop the libraries and improve their functions according to the individual characteristics of each campus.
2. We will enhance the academic information resources of facilities such as the Main Library and the Kyoto University Museum, through activities such as selecting and collecting appropriate e-journals and databases, promoting the submission and dissemination of content to and by KURENAI (Kyoto University Research Information Repository System) and KURRA (Research Resource Archive, Kyoto University), and creating a database of academic specimens and materials.



Chronology of the Main Library and Library Network

1897	Jun.	Kyoto Imperial University established; Kyoto Imperial University Library set up
1899	Dec.	Reading Room opened (December 11; now taken as the anniversary of the founding of the Library)
1908	Dec.	University Library Board Regulations enacted
1947	Sep.	Name changed to Kyoto University Library
1948	Feb.	First rebuilding of Kyoto University Library completed
1961	Mar.	Sixty Years of the Kyoto University Library published
1964	Sep.	Library bulletin Seishu begins publication
1983	Oct.	The third (current) building of Kyoto University Library completed
1984	Apr.	Library database introduced (start of computerized library services)
1985	Jan.	BNC (Back Number Center) opened
	Apr.	Research Room founded in Kyoto University Library
1987	Jun.	Joined NACSIS-CAT (National Institute of Informatics online cataloging system) Kyoto University Library designated a member of NCOP (National Center for Overseas Periodicals) for Science and Technology
1990	Oct.	OPAC (Online Public Access Catalog) began operations
1992	Apr.	Joined NACSIS-ILL (National Institute of Informatics interlibrary loan system)
1996	Apr.	Research and Development Laboratory (R&D Lab) set up in Kyoto University Library (formerly Research Room)
	Jun.	Oldest extant copy of the Konjaku monogatari-shu (Suzuka Ed.) designated a National Treasure
1998	Jan.	E-Library system began operations
	Apr.	Kyoto University Library began to offer a Liberal Arts and General Education Course "Introduction to Information Retrieval" (subsequently offered every year; the title changed to "Introduction to Academic Information Literacy: Information Skills for Library and Web Resources" in 2013 and 2014 and to "University Library Data Searching" after 2015)
1999	Nov.	Celebrations for centenary of the founding of Kyoto University Library
2000	Apr.	Kyoto University Uji Library launched
2004	Apr.	Kyoto University Library Network Board founded
2005	Mar.	"Rules and Regulations Relating to Functions of Kyoto University Libraries" enacted
	Apr.	Kyoto University Library Network established
2006	May	Inter-campus Delivery Service started
	Jun.	KURENAL (Kyoto University Research Information Repository) trial began in June (officially launched in October)

2007	Mar.	E-journals and database authentication system trial began in March (officially launched in April) Kyoto University Library Network Mission Statement enacted
2008	Apr.	Costs for e-journals transferred from budgets of individual departmental libraries to centralized management by Kyoto University
2009	Jan.	Full-time Associate Professor assigned to the R&D Lab Study Room 24 set up in Kyoto University Library
	Jun.	Inter-campus Return Service initiated
	Dec.	Future Vision of Kyoto University Library Network approved
2011	Oct.	Kyoto University Library Network Rules and Regulations enacted
2013	Oct.	Learning Support Desk set up in Kyoto University Library Electronic Document Delivery Service (EDDS) launched on a trial basis in October (officially launched in April 2014)
2014	Apr.	Learning Commons and other support initiatives set up in Kyoto University Library
2015	Feb.	Academic Cooperation Agreements signed with Korea University's Research Institute of Korean Studies and Kyoto University's Institute for Research in Humanities in relation to the ancient Korean documents held by the Kyoto University Library (until June 2018)
	Mar.	Media Commons and Study Room 24 upgraded at the Main Library
	Apr.	Kyoto University Open Access Policy approved
2016	Feb.	"Future Vision of Kyoto University Library Network" revised
	Mar.	KURENAL Deposit System launched on a trial basis in March (officially launched in April 2017)
	Apr.	Administrative structure of the Main Library reorganized "Project for Promoting Open Access" launched as part of the third medium-term Action Plan for Strategic Priorities (Academic Year 2016-2021) "Restoration and Digitization of the Fujikawa Collection" project (selected by MEXT for budget request) implemented (Academic Year 2016-2017)
	Dec.	The New Katsura Library Project (budget request for academic year 2017) approved (Academic Year 2017-2019) An academic exchange agreement signed with Taiwan's National Central Library Joined the International Image Interoperability Framework (IIIF) Consortium
2017	May	Yoshida-South Library designated as an Area-Focus Hub Library The Kyoto University Library Facility Reservation System began operations
	Sep.	Kyoto University Rare Materials Digital Archive test release (officially released in December)
	Oct.	"Agreement on the Promotion of Collaboration and Cooperation through Inter-Library Lending" signed between the Kyoto University Library and the Kyoto Prefectural Library
	Nov.	Full-time Assistant Professor assigned to the R&D Lab
2018	Feb.	Katsura Library designated as an Area-Focus Hub Library
	Apr.	Graduate School Common Courses "Basics of Academic Information Literacy" (intensive course) offered
	Jul.	Kyoto University Rare Materials Digital Archive Fund established

Former and current Directors-General

Former and current Directors-General (also serving as Directors of the Main Library)

	Name	Term of office
1st	Yuzo Ohnishi(Faculty of Engineering) Yuzo Ohnishi(Executive Vice President)	April 1, 2005 - September 30, 2008 October 1, 2008 - October 31, 2008
2nd	Joji Fujii (Faculty of Letters)	November 1, 2008 - March 31, 2011
3rd	Nobuo Hayashi (Faculty of Law)	April 1, 2011 - September 30, 2012
4th	Takashi Hikiyara (Faculty of Engineering)	October 1, 2012 -

Former and current Deputy Directors-General

	Name	Term of office
1st	Kimio Morimune (Faculty of Economics)	June 1, 2005 - March 31, 2006
2nd	Tomohiro Okada (Faculty of Economics)	April 1, 2006 - September 30, 2008
3rd	Tomohiro Okada (Faculty of Economics)	December 16, 2008 - March 31, 2011
4th	Takashi Hikiyara (Faculty of Engineering)	April 1, 2011 - September 30, 2012
5th	Hiroaki Terada (Faculty of Law)	October 1, 2012 - September 30, 2014
6th	Hideki Fujii (Faculty of Economics)	October 1, 2014 - September 30, 2016
7th	Hiroyuki Matsui (Graduate School of Management)	November 1, 2016 -

List of Kyoto University Libraries

A Yoshida Campus

Main Campus

- Main Library
- Letters Library
- LAJ
- Education
- Law
- Economics
- Econ. Res. Office
- Eng. Chem. (Yoshida)
- Eng. Elec. (Yoshida)
- Eng. Arch. (Yoshida)
- Eng. Global (Yoshida)
- Eng. Phys. (Yoshida)
- Jimbun
- Energy
- Informatics
- GES [Chikyu Kankyo]
- EPRC [Kankyo Kagaku]
- KIER [Keiken]
- ASAFAS [Asia]

North Campus

- Science
- Sci. Mathematics
- Sci. Physics
- Sci. Astronomy
- Sci. Earth Planetary
- Sci. Chemistry
- Sci. Biology
- Agriculture
- Agr. Nat. Res. Econ.
- CIEAS[Jin Jose]
- Yukawa [Kisoken]
- RIMS [Suken]
- FSERC Forest

Yoshida-South Campus

- Yoshida-South Library

Faculty of Medicine/University Hospital/ Faculty of Pharmaceutical Sciences Campus

- Medical Library • Med. Health Sci.
- Pharmacy
- ASAFAS [Africa]
- CSEAS [Tohnan Asia]

B Katsura Campus

- Eng. (Katsura)
- Eng. Chem. (Katsura)
- Eng. Elec. (Katsura)
- Eng. Arch. (Katsura)
- Eng. Global (Katsura)
- Eng. Phys. (Katsura)

C Uji Campus

- Uji Library

Others

D RNS [Fukugoken]

E PRI [Reichorui]

F CER [Seitaigaku]

G FSERC Seto

E

B A

C F

D

G

Kyoto University Libraries Directory

List of links to detailed information on KU libraries, websites, library hours, and location maps

<https://www.kulib.kyoto-u.ac.jp/newdb?typeid=3&lang=en>



Recording and Dissemination of Intellectual Achievements

KURENAI (Kyoto University Research Information Repository)

KURENAI, Kyoto University Research Information Repository System, is an online database created by the Kyoto University Library Network that makes available to the general public the research and education findings (peer-reviewed journal articles, dissertations, departmental bulletin papers, reports of Grants-in-Aid for Scientific Research, etc.) produced by Kyoto University. KURENAI became available in 2006. KURENAI allows the Library Network to give shape to the plans related to the library among the University's medium-term plans to "enrich the academic and information resources of facilities such as the Main Library and the Kyoto University Museum, through activities such as promoting the submission and dissemination of content to and by KURENAI (Kyoto University Research Information Repository System), and

the Kyoto University Research Resource Archive, and creating a database of academic specimens and materials." It also allows us to show the wider world the quality of research and researchers at the University. In academic year 2013, in accordance with an ordinance issued by Japan's Ministry of Education, Culture, Sports, Science and Technology in March 2013 partially amending degree rules, it became a fundamental principle to publicize doctoral dissertations in full on the internet, with the result that even more academic articles than before became available on KURENAI.

KURENAI will continue to actively collate and disseminate academic articles and other data in diverse research fields, and make every effort to make research findings of the University readily accessible to users.

Number of content entries
registered on KURENAI
(As of March 2018)

Number of content entries
188,699

Number of full-text content
entries

172,716

(of which 18,271 are dissertation abstracts only)

KURENAI (Kyoto University Research Information Repository)

<https://repository.kulib.kyoto-u.ac.jp/dspace/?locale=en>

MAIL: denjo660@mail2.adm.kyoto-u.ac.jp



Official launch of the KURENAI Deposit System

April 2017 saw the official launch of the KURENAI Deposit System that enables faculty members to more smoothly apply for the registration of academic articles on KURENAI in accordance with the university's Open Access Policy. The Library Network will continue to promote Open Access by improving the usability of relevant systems to support faculty members in depositing their articles on KURENAI.

Kyoto University Open Access Policy

About Open Access

<https://www.kulib.kyoto-u.ac.jp/content0/13087?lang=en>

In April 2015, Kyoto University approved the Kyoto University Open Access Policy, whereby in principle the online publication via KURENAI of all research results (such as academic papers written by Kyoto University faculty members) is now the responsibility of faculty members. We believe that assuring open access to all research results facilitates collaboration among researchers, and that it is a powerful force in opening the path to the creation of new knowledge that goes beyond the boundaries of research fields. At the same time, we also believe that it makes it possible to clarify

the accountability owed to society by those who are engaged in academic research. By adopting the university-wide policy, Kyoto University on this occasion has clearly taken a stance that promotes open access. Moreover, by broadly publishing many education and research results, it is contributing to the development of academic research as well as fulfilling its social responsibility as a university.



1. **Objective**
To assure open access to published products of Kyoto University faculty research to further research and public accountability.
2. **Access Rights**
Kyoto University Research Information Repository (hereafter "Repository") shall provide open public access to Kyoto University faculty research published in journal articles without acquiring copyright.
3. **Waiver**
Kyoto University exempts research requesting copyright or similar protection.
4. **Non-retroactive**
This policy exempts research published prior to its implementation or contractually conflicting with it.

5. **Electronic Data Submission**
The Repository shall disclose published versions of research whenever permitted. If a publisher prohibits open access to the published version but allows open access to final prepublication manuscripts, researchers should submit their final prepublication manuscripts to the Repository. Deposit, release, subsequent use, and all other issues related to the Repository shall be implemented in accordance with Kyoto University Research Information Repository Operational Guidelines.
6. **Others**
Open access issues unstated in this policy shall be negotiated by the parties concerned.

Kyoto University Action Plan for Strategic Priorities "Project for Promoting Open Access"

WINDOW - A Vision for the Future
<http://www.kyoto-u.ac.jp/window/en/>

In order to materialize its vision for reform and future development, known as the "WINDOW" concept, the University formulated the Kyoto University Action Plan for Strategic Priorities (2016-2021) as a focused and strategic set of initiatives to be implemented during the third medium-term goal period. One of its projects, the "Project for Promoting Open Access," is aimed at ensuring greater efforts to implement the aforementioned Kyoto University Open Access Policy in practical terms.

Under this project, we will pursue the following activities to promote open access to research findings and primary sources held by the University, and improve functions for supporting research:

- (1) Pushing forward with efforts to make academic articles and other research findings available to the public and to expand their availability internationally
- (2) Digitizing rare materials and other such primary sources and making them available online
- (3) Conducting research on open access and research data on the basis of surveys in and outside of Japan
- (4) Training library staff as data curators
- (5) Pursuing educational activities on information literacy regarding open access and research integrity

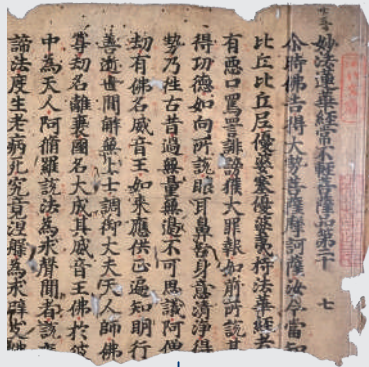
Sharing academic articles and a variety of other research information with the world through this project will contribute to internationalizing research and generating innovation in line with the WINDOW concept.



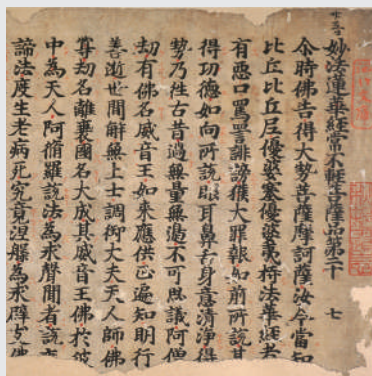
Restoration of Rare Materials

Kyoto University has a huge collection of important rare books, Chinese and Japanese classics and other materials, in its holdings, including a designated National Treasure and numerous Important Cultural Properties. Many of these documents are in poor condition, due to their age, handling history, or damage by book lice. The Library Network has been restoring these documents to assure the access to these materials for research and education, by prioritizing those that are most urgently in need of repair. In academic year 2017, we repaired the following materials as the second-year project of the Rare Materials Repair Plan's second term.

before



after



Kumarajiva "Mouhou rengekyou" (1349)

Main Library

Kumarajiva "Mouhou rengekyou" (1349) one scroll and 8 other books

Graduate School of Law

"Sir Josia "A new discourse of trade : wherein is recommended several weighty points relating to companies of merchants, the act of navigation, naturalization of strangers, and our woolen manufactures, the balance of trade, and the nature of plantation." (1698) and 21 other books

Graduate School of Economics

Herman Hugo "Pia desideria tribus tomis comprehensa. I. Gemitus animae poenitentis. II. Vita animae sanctae. III. Suspiria animae amantis." (1709) and 2 other books

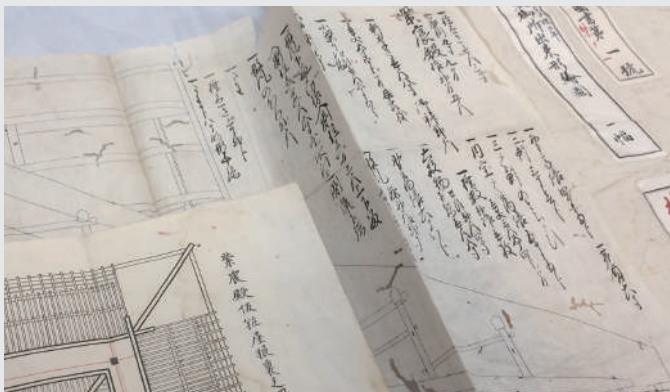
Graduate School of Science

Mituyoshi Yoshida "Koujinki" (1631)

Institute for Research in Humanities

Charles A. Bourdot de Richebourg "Nouveau coutumier general, ou, Corps des coutumes generales et particulieres de France, et des provinces connues sous le nom des Gaules : exactement verifiées sur les originaux conservez au Greffe du Parlement de Paris, & des autres cours du royaume. -- t. 1 - t. 4." (1724) and 4 other books

Kyoto University Rare Materials Digital Archive Fund



Because an immense amount of labor and expenses are necessary in order to repair, digitize, and publicize antique documents that have become brittle over long periods of time, there are still a number of rare materials asleep inside the stackroom.

Hence, the Kyoto University Library Network established the Kyoto University Rare Materials Digital Archive Fund in July 2018 in order to proceed with repairing, digitizing, and publicizing old materials owned by Kyoto University. Donations will be used to restore and digitally photograph these antique materials for their public release through the Kyoto University Rare Materials Digital Archive website. Benefits such as Library Network design goods and library cards will be awarded to our donors as a token of appreciation.

Digitizing and Publicizing Rare Materials

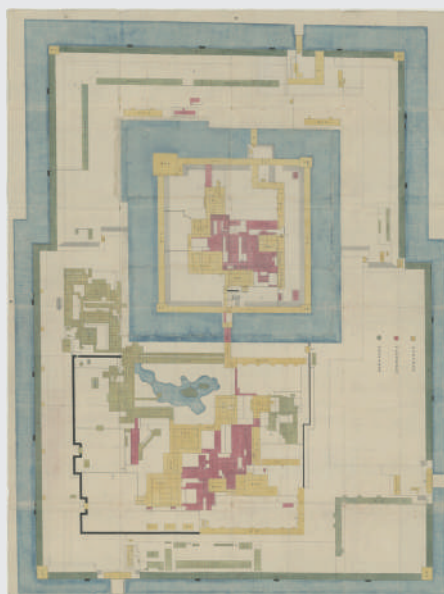
Kyoto University Rare Materials Digital Archive

<https://rmda.kulib.kyoto-u.ac.jp/en>

The Library Network has been digitizing and publicizing rare materials as a means to widely share the historical information written in these documents. The number of documents that has been digitized is approximately 10,000, which boasts as one of the largest collections in the country. Approximately 3,400 documents were digitized and released on the Kyoto University Rare Materials Digital Archive website in academic year 2017, and images of materials owned by the Main Library became available for free secondary use.

Kyoto University Rare Materials Digital Archive was launched in September 2017 as a new system with image viewers that enable users to smoothly browse high-definition images and is compliant with the International Image Interoperability Framework (IIIF), which increases interoperability and accessibility of image data. By applying features of this IIIF standard, the Joint Project on Digital Unification of Fujikawa Collection (Digital Fujikawa) was launched in September 2018, which showcases the digital unification of documents owned by Keio University and Kyoto University on its website for the public to easily search and view through the materials.

We will continue to promote the utilization of digitized images through enriching contents and implementing highly accessible data publishing methods.



"Plan view inside Nijo Castle"
(Nakai Collection)



"Testimonial by Lee Eun Hyo in 1623"
(Kawai Collection)

Materials digitized by the Library Network in academic year 2017

Collections of the Main Library

- Fujikawa Collection and other documents on medicine (2,839 items, 302,843 images)
- Nakai Collection (249 items, 650 images)
- Kawai Collection (113 items, 17,053 images)
- Other rare materials (184 items, 21,402 images)

Materials owned by departments (28 items, 12,303 images)

Kyoto University Rare Materials Digital Archive Fund

<https://www.kulib.kyoto-u.ac.jp/about/1378633?lang=en>

Materials for future digitization (more to follow)

Tanimura Collection

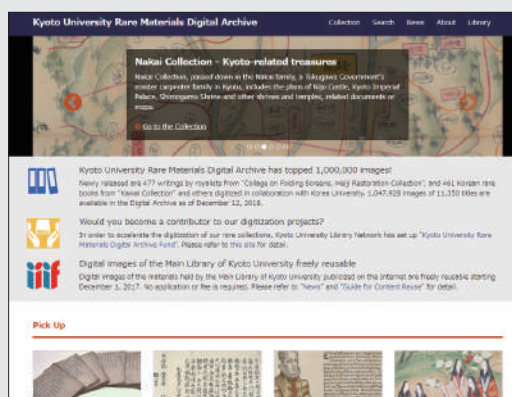
Extremely rare Japanese/Chinese books owned by Ichitaro Tanimura (1871-1936), a business person who held prominent positions such as Chairman of Fujimoto Bill Broker and Bank Company, Ltd. (present-day Daiwa Securities Co. Ltd.)

Nakai Collection

A collection of architectural drawings and maps of the Kyoto Imperial Palace, Nijo Castle, and other shrines and temples that have been passed down in the Nakai family, a master carpenter family in Kyoto during the Edo period.

Zokyo Shoin Collection

A collection of valuable documents for studying Daizokyo, a complete collection of Buddhist sutras, gathered by Zokyo Shoin in Kyoto as the original text for publishing their own books.



User Support

Facilities and equipment to support learning

In the libraries, spaces are provided to support active learning, such as group work, in accordance with Kyoto University's mission statement on education (i.e., "independent and interactive learning") as well as to accommodate diverse forms of learning and ways of studying.

Library Name	Facility	Targeted Users	Max. Capacity of Users	Remarks
Main Library ※All closed when the Library is closed MAIL w3adm1_660@mail2.adm.kyoto-u.ac.jp TEL 075-753-2632	Learning Commons	KU members	About 100	Conversation allowed
	Study Room 24		Up to 140 (99 in self-study space, 41 in the "Nagomi" common room)	Mon.–Thu.: 10:00 a.m. - 9:00 a.m. the following morning Fri. & days before national holidays: 10:00 a.m.–10:00 p.m. Sat., Sun., & national holidays: 10:00 a.m.–7:00 p.m.
	Silent Area		Up to 146	Absolute quiet area: devices that make noise prohibited
	Media Commons		Up to 45 including 13 in the Media Theater	Equipped with music/movie players and materials, including language learning programs
	Common Study Rooms		5 rooms accommodating about 4~20 each	Conversation allowed
	Study Cubicles	Graduate students and Faculty members of KU	14 rooms	
Yoshida-South Library MAIL eturan61@mail.adm.kyoto-u.ac.jp TEL 075-753-6525	Wa-on	KU members	About 40 *Including the Group Study Room accommodating about 8 people (Yoshida-South Campus members only)	Conversation allowed
Medical Library MAIL medlib@mail2.adm.kyoto-u.ac.jp TEL 075-753-4323	Group Study Rooms	Members of the Faculty of Medicine and related institutes	3 rooms accommodating about 8–12 people each	Conversation allowed
	Study Booths		2 rooms accommodating 4 people each	
	Seminar Room		Up to 24	

Learning Commons in the Main Library

With a main focus on the theme of "dialogue," the facility is fully equipped with learning support functions such as freely arrangeable tables, portable whiteboards, projectors, and electronic blackboards. A diverse group of members – our students, faculty, and library staff – shared their knowledge, experience, wisdom, and sensibility, of which were reflected in every process of creating this space, from spatial design to selecting furniture and making signages. Opened in April 2014, this learning environment is a true realization of the concepts of "gathering" and "emergence," and features a unique wooden structure that represents a camphor tree, the University's symbol. Actively used by student groups as a venue for holding discussions and exchanging opinions, it has become a multi-functional study space for independent, proactive learning, thus taking on a new role of educational support in the University.



Study Room 24 and Media Commons (Main Library)

Facilities such as Study Room 24 and the Media Commons were redesigned in academic year 2014 to achieve enhanced user environment and learning support functions. Decisions on spatial design and furniture selection reflect a collaborative effort among faculty and staff of the Main Library, students from the Department of Architecture and Architectural Engineering (Graduate School of Engineering) and the Undergraduate School of Architecture (Faculty of Engineering), and faculty members from the Kyoto University Design School.

Study Room 24

We have improved the comfort of the overall learning space and increased the convenience of the desks, etc. Also, we have accommodated diverse forms of usage by installing new desks that can be freely combined in a relaxation space.



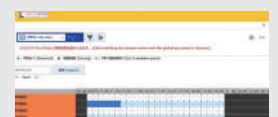
Media Commons

Divided into zones depending on the number of users, the Media Commons is an active learning environment equipped with various forms of media. PCs that are compliant to view webcasts have been installed, and our collection of video content such as films, documentaries, and language learning has been expanded. The space is now evident as a media center due to the newly installed wooden shelves along the side of the hallway, integrally displaying a wide selection of CDs, DVDs, and Blu-ray discs. The adjoining Media Theater is equipped with record players and cassette players, so that users may work with a variety of media, whether analogue or digital.



Facility Reservation System

A facility reservation system was introduced in the Main Library in May 2017, enabling users to make online reservations to use common study rooms, study cubicles, and the Media Theater.



Academic Information Literacy Learning Support



Co-ordinated Cross-Campus Initiatives for User Support

The Kyoto University Library Network Academic Information Literacy Learning Support Policy was endorsed in 2011. The University is currently doing all it can to improve its scheme for collaborative and coordinated initiatives between the various libraries of Kyoto University in support of information literacy education on the basis of this Policy. For new students, we offer orientation, guides and library tours. More advanced content is available in instruction classes on, for example, the use of KULINE (Kyoto University Library Online Catalogue) and various databases, and the method of collecting literature. Workshops on use of the library are given on faculty members' request on a per-class basis in normal class time, with library staff taking charge of one class session in a required course in some faculties and graduate schools. Workshops are also given on databases purchased or licensed for use by the University: depending on the field these workshops are offered in coordination with related campuses or faculties, and can for example be held simultaneously across several campuses, or in joint initiatives of departmental libraries and the main library.

"University Library Data Searching" (Liberal Arts and General Education Course)



"University Library Data Searching" is a course that the Library Network offers as part of its academic information literacy education. First begun in 1998 with the initiative of Professor. Makoto Nagao (then President of Kyoto University) and the University Library under the title of "Introduction to Information Retrieval", it continues to this day to win high approval ratings from students. The course begins with lecture by the Director-General of the Library Network, and proceeds with lectures by faculty members of differing departments and areas of expertise, from for example the graduate schools of Informatics, Human and Environmental Studies, and Pharmaceutical Sciences, and the University Library Research and Development Laboratory. Hands-on exercises include searching on computers and the actual use of library materials, of which are assisted and created by younger library staff members working in coordination with the faculty in charge. This course is offered in response to the changing information environment and needs in higher education, as students today are increasingly expected to acquire information literacy skills.

Graduate School Common Courses "Basics of Academic Information Literacy" (0.5 credit)

Among the graduate-level open electives introduced in 2018, this course is offered by a team of professors from the Institute for Liberal Arts and Sciences, Academic Center for Computing and Media Studies, and the Kyoto University Library's Research and Development Laboratory. It is an opportunity for graduate students to learn essential research skills, such as effective ways to search, gather, and make use of academic literature, research etiquette, essential techniques and security skills to operate computers and networks, and information ethics.

Support for Students from International and Diverse Cultures (Main Library) The Learning Support Desk(Main Library)

The Learning Support Desk was organized inside the Main Library in October 2013 to provide academic support that meets the needs of the diversifying student population. Staff members are graduate students of Kyoto University, including international students, offering support in Japanese, English, and other foreign languages. Advices on how to search for library materials and academic papers to conduct trouble-free learning and research activities, library tours, and instructions on how to use the library including the stackroom are offered in English and other languages for international students whose native language is not Japanese. The staff members also serve as mentors for the Japanese students, advising them on writing reports and preparing presentation materials.



Improvements to Enhance Independent and Self-directed Study Environments

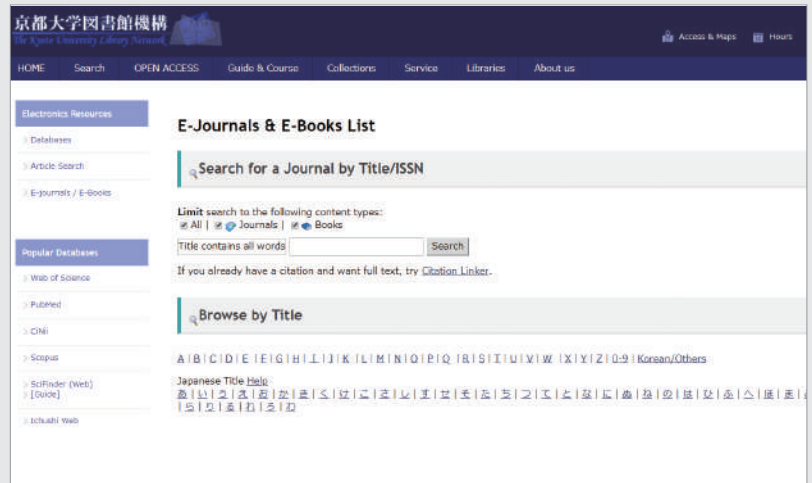
Extension of Library Hours

Based on the results of a survey conducted in academic year 2015 by the Network, open hours were extended in response to requests from library users. Budgetary assistance was provided for additional personnel expenses due to the extension of library hours in divisional and departmental libraries, the Yoshida-South Library, and the Main Library, as incentives for future expansion. As of academic year 2018, eight libraries have extended their open hours for a total of 151 days. The outcomes of this project have been highly successful, as some libraries have discontinued to regularly close on the last day of every month, while others further extended their open hours using their own budget.

Enriching Our Holdings

E-journal subscription

E-journals have now replaced academic print journals as an essential information resource, and they are a research lifeline. As of academic year 2018, more than 41,000 subscription-based e-journals have been made available to users in the University. In order to make it easier to access e-journals, we provide a comprehensive list of available e-resources (including open-access Special journals) on the Library website. Demand for such e-journals can only be expected to increase, but subscription costs are also rising. The Kyoto University Library Network is currently investigating how best to secure a budget for subscriptions. The Library Network is contacting libraries of other universities and working to find a solution.



List of e-journal titles

<https://www.kulib.kyoto-u.ac.jp/erdb/13502?lang=en>



Inquiries

<https://www.kulib.kyoto-u.ac.jp/form/14106?lang=en>



Developing Special Collections

In addition to the collection development effort by each library in the Kyoto University Library Network, the Library Network has been functioning a coordinating body for Special Collection development for Kyoto University. Highly valued collections beyond the budget of each member library are purchased as Special Collections with the designated funding from Kyoto University. The University undertakes this project independently in light of its importance, following a similar project that had been conducted by MEXT until academic year 2002.

Special Collection purchased in academic year 2017

- Microfilms "Yokohama Specie Bank, Ltd. documents: Supplements to Vol. 1, Vol. 2 (Chapter 1), Vol. 3, Vol. 4, Vol. 5 (Chapters 3 - 6), and Vol. 11" (Collection of the Graduate School of Economics)
- Online database: "Nineteenth Century Collections Online (NCCO). Archive 2: Asia and the West: Diplomacy and Cultural Exchange. Archive 11: Mapping the World: Maps and Travel Literature"



Asia and the West: Diplomacy and Cultural Exchange

List of Special collections

<https://www.kulib.kyoto-u.ac.jp/collections/12557?lang=en>



Area-Focus Hub Libraries and Construction of the Katsura Library (provisional name)

Area-Focus Hub Libraries

As stated in "Future Vision of Kyoto University Library Network" (revised Feb. 2016), Kyoto University Library Network categorizes the functions of the libraries across the university into three types: a "General Library", a "Special Library" and an "Area Focus Hub Library", in order to enhance networking among the libraries. Of these, an Area Focus Hub Library integrates functions of multiple Special Libraries such as user services, collection building, materials arrangement, facilities provision and materials preservation, and shares the universi-

ty-wide library functionality that organizes and coordinates functions related to the entire network, making the best use of the knowledge of its field of expertise. As of October 2018, the Yoshida-South Library and the Katsura Library (provisional name) have been approved as Area-Focus Hub Libraries. The role of an Area Focus Hub Library has become more important in enhancing the coordination of the university-wide library functionality and making the entire library network more efficient and functional in the future.

Yoshida-South Library

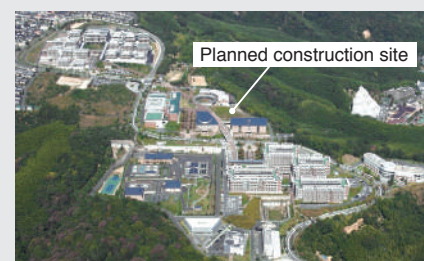
Since April 2014, the Yoshida-South Library has been jointly operated by five departments on the Yoshida-South Campus (Graduate School of Human and Environmental Studies, Graduate School of Advanced Integrated Studies in Human Survivability, Center for the Promotion of Excellence in Higher Education, Institute for Liberal Arts and Sciences and Institute for Advanced Study merged with iCeMS in April 2017), and has been positioned as a "Yoshida-South Campus Central Library," fulfilling the function of a departmental library for these five departments as well as functioning and serving as a learning library for students enrolled in the Faculty of Integrated Human Studies and those engaged in liberal arts and sciences courses. The Yoshida-South Library, as the Yoshida-South Campus Central Library, has been engaged in the implementation of first-year experience support and information literacy educational support as a university-wide library function, and is scheduled to continue carrying out these programs as before on a joint basis with the Main Library, after its approval as an Area-Focus Hub Library. Also, the library integrates administrative management and services required at multiple departments, providing user services, collection development, accession work and cataloging, facility use, and material preservation functions. We are now examining various facility improvements in order so that we will continue to serve in the role of an Area-Focus Hub Library in the future, as well.



Katsura Library (provisional name)

On the Katsura Campus, five separate libraries of the Graduate School of Engineering have been operated since the opening of the campus in October 2003. We have recently made a decision to consolidate these five libraries and build a new library that will serve as an Area-Focus Hub Library with a university-wide functionality. The building site is located in the B Cluster situated in the center of the campus, with a view of Kyoto's city center. Necessary preparations and arrangements are currently underway towards the opening of the library in spring 2020 (tentative). At the Katsura Library (provisional name), we are considering placing an emphasis on research support services because most of those based at the Katsura Campus are graduate students and researchers. From a facilities and equipment standpoint, we plan to provide dedicated sites that distinguish themselves from the laboratory atmosphere with diverse facilities, such as Open Lab, Research Commons, and Media Creation Room. These aim to promote collaboration with exter-

nal researchers as well as encourage students' intellectual activities. From a face-to-face services standpoint, we plan to promote services that are considered necessary for each phase of the research activity cycle of advancing, presenting and accumulating research, such as writing support, open access support and archival support. Information leading up to the opening of the Katsura Library (provisional name) will be posted on the Library Network website as necessary.



Yoshida-South Library

<http://www.kulib.kyoto-u.ac.jp/yoshidasouthlib/en/index.html>



About a new library at Katsura Campus

<https://www.kulib.kyoto-u.ac.jp/about/1375269?lang=en>

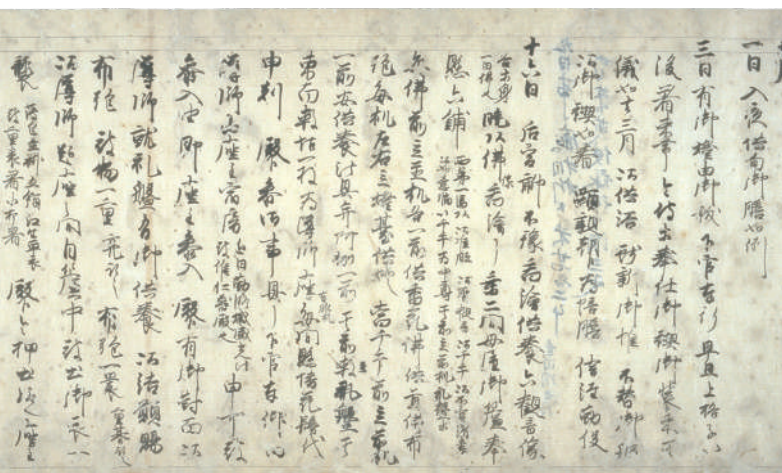


Major Collections

Main Library



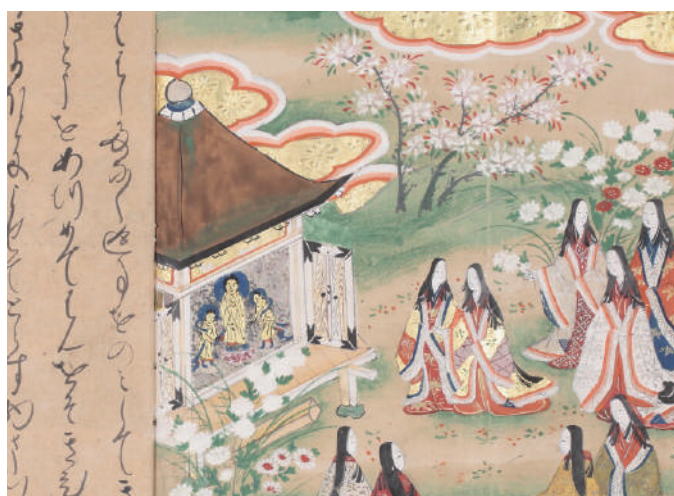
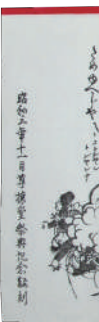
01



03



04



06



07

01. National Treasure "Konjaku monogatari-shu" (Suzuka Ed.), / 02. "Nouve Zeyttung auss der Insel Japonien (a group of Japanese emissaries sent to Europe)" / 03. Important Cultural Properties "Hyohan-ki" / 04. Meiji Restoration Collection "Kakanpu (Asbestos cloth by Hiraga Gennai)" / 05. Meiji Restoration Collection "Miyako fūryū tokoton'yarebushi (A song written for the imperial army to defeat the Tokugawa Shogunate)" / 06. "Shiroyaki bunshou (A long novel of a successful man, Bunshou.)" / 07. Tanimura Collection "Kogafu" / 08. Collection of Documents on French Architecture and Topography "Nouvelle description de la ville de Paris : et de tout ce qu'elle continent de plus remarquable"

National Treasure

Konjaku monogatari-shu (Suzuka Ed.)	Vols. 2, 5, 7, 9, 10, 12, 17, 27, 29. Nine books in total. Manuscript dating from the late Heian period to the early Kamakura period
--	---

Important Cultural Properties

Manyoshu (Amagasaki-bon)	Vol. 16. One book. Manuscript dating from the late Heian period to the early Kamakura period
Kokinshu-chu	Vols. 1~15, 17 (Vol. 16, end of Vol. 17~20 missing) in 2 books. Author: Fujiwara no Norinaga; manuscript written by Nijo no Morotada, dated 1241
Hyohan-ki	49 scrolls. Manuscript diary of Hyobukyo Taira no Nobunori, 1132-1171
Norikuni-ki	1 scroll. Manuscript diary of Taira no Norikuni, 1036 Summer-Winter.
Tomonobu-ki	1 scroll. Manuscript diary of Taira no Tomonobu, 1132 Spring.
Yogaku Shinan-sho	Vols. 7 & 22 in 2 books. Manuscript dating from late Heian period.
Kiyohara-ke kagaku-sho	34 kinds of manuscripts

Other Rare Materials

"Neue Zeyttung auss der Insel Japonien (a group of Japanese emissaries sent to Europe)" , "Kunijo Kabuki Ekotoba (Illustrated Manuscript of Kuni's Kabuki)" , "Shiroyaki bunshou (A long novel of a successful man, Bunshou)." , etc.

Special Collections

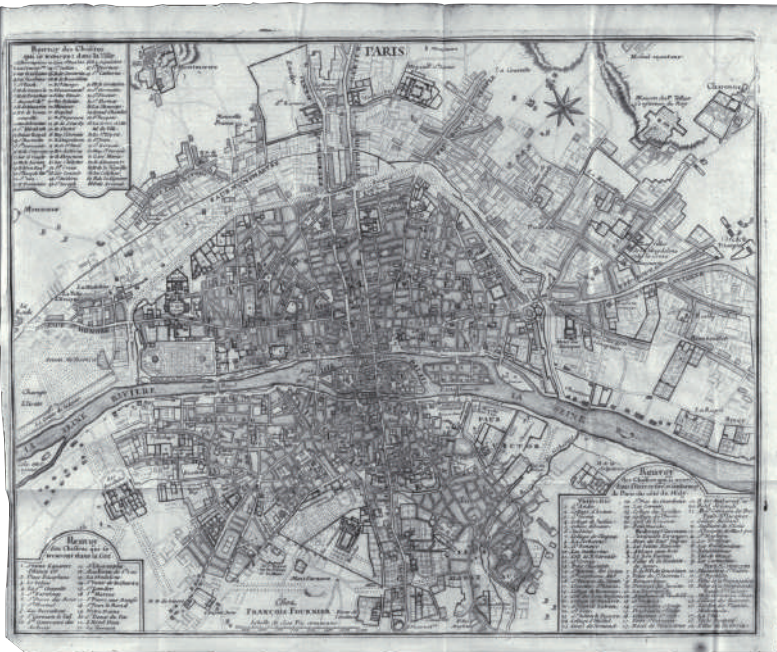
The Meiji Restoration Special Material Collection	A collection of materials relating to kin' no no shishi (loyalists who fought for the cause of the Emperor), dating from the end of the Tokugawa regime. Mainly items written by Yoshida Shoin. Also includes Kihetai Nikki, Draft of the feudal confederacy concluded by the three domains within the hand of Okubo Toshimichi and the Koyori Letters of Hirano Kunioomi.
Otsuka Takashi Collection	A collection of over 470 chronologically ordered maps of Kyoto dating from the Edo period to the modern period, collected by Takashi Otsuka. Includes the oldest extant map of Kyoto, known as Myako-no-ki (also as Kan'ei Heian-machi ko-zu [Old map of Kyoto City in the Kan'ei era]).
Kawai Collection	A collection comprising 793 titles in 2,160 volumes of books and documents relating to Korea. Compiled by Kawai Hiroami, a Doctor of Literature, for research into Korean history.
Kikutei Collection	A collection of manuscripts and records of yusoku kojitsu (codes of court practice and etiquette), mainly consisting of musical documents, from the family history of the Kikutei family. Includes heirlooms thought to go back as far as Kanesue, fourth son of Saionji Sanekane and forefather of the Kikutei family.
Kyokko Collection	A collection comprising 3,000 original texts, and newspaper and journal articles relating to Dante, formerly owned by Jukichi Oga.
Konoe Collection	A collection comprising Chinese classics, and manuscripts of Utsubo monogatari (Tale of the Hollow Tree), Ochikubo monogatari (Tale of Lady Ochikubo), Okagami (The Great Mirror), and others. Comprises 3,150 volumes donated to Kyoto University by the Konoe family when the Yomei Bunko was founded
Shimada Collection	A unique collection of 480 items relating to Shugen-do, Japanese mountain asceticism, which incorporates Shinto and Buddhist concepts. Includes documentary records that belonged to the Shimada family, to which were then added books collected by the Meiji-period scholar of Buddhism, Bankon Shimada.
Zokyo Shoin Collection	A collection of books formerly housed in the Zokyo Shoin in Kyoto. Contains Buddhist texts and documents relating to Shin-Buddhism that were source documents for Daihin Zoku Zokyo published by Zokyo Shoin between April 1905 to 1912.
Shimbun Collection	A collection of Japanese newspapers and newspaper-related materials dating from the end of the Edo period to early days in World War II, formerly in the collection of Kazuto Nakagami, journalist for the Osaka Newspaper Company.
Seike Collection	A collection of materials comprising Confucian classics, diaries and secret texts transcribed and handed down in the Kiyohara family, who specialized in Myogyo-do Confucian studies. Includes 34 volumes of writings by Kiyohara family members, designated as important cultural properties. One of these, Koshi-den, was reproduced and published as part of the celebrations of the 60th anniversary of the Kyoto University Library's foundation.
Tanimura Collection	A collection of 9,200 rare Japanese and Chinese books from the collection of Ichitaro Tanimura, a businessman active during the Taisho and Showa periods. Donated to Kyoto University thanks to a connection with Dr. Izuru Shimura. Includes a great variety of interesting materials, e.g. Komyo Kogo Gankyo and Den Kanmu Tenno Shakyō.
Toan Collection	A collection of 680 titles in 8,046 volumes carefully collected by Prince Kinmochi Saionji, his pen name was Toan, Minister of Education at the time Kyoto University was founded, and who played a major role in the history of Kyoto University.
Nakai Collection	A collection comprising 177 Japanese books and 2,276 plans, e.g. drawings, old documents and maps, relating to the construction of the Old Imperial Palace, Nijo Castle, and various temples and shrines, from a collection of the family of master carpenter Nakai who specialized in building shrines, temples and palaces in Kyoto.
Nakanoin Collection	A collection of 1,041 items, including books and documentary records, formerly owned by Count Michinori Nakanoin. Includes genuine manuscripts of imperial poetry collections such as Manyoshu, the oldest extant anthology, and Kokinshu, annotated by Michimura and Michikatsu, as well as explanatory notes for Genji Monogatari (Tale of Genji), Ise Monogatari (Tales of Ise), and others.
Hiramatsu Collection	A collection of more than 3,100 books handed down in the Hiramatsu clan, a family that goes back to court noble Nishinoto-no Tokiyoshi. Includes documents about Imperial Court ceremonies, diaries, and numerous other rare documents. Hyohan-ki, Norikuni-ki and Tomonobu-ki, diaries written by court nobles, are all designated important cultural property. It also includes Heike Monogatari (Tales of Heike) (Manaji-bon).
Fujikawa Collection	A collection of Japanese and Chinese medical books published before the Meiji era, and translations of Western medical books dating from the mid Edo period to the last days of the Tokugawa regime. Originally collected by Yu Fujikawa, a Doctor of medicine and literature for his Nihon Igaku-shi (History of Japanese Medicine)
Miyazaki Ichisada Collection	A collection of books related to geography and old maps belonging to the former collection of Emeritus Professor Ichisada Miyazaki. Includes Venetian Ptolemaic atlases published in 1561, and woodcut maps of the New World by Münster published in 1550.
España Collection	A collection of over 1,300 books and documents on science donated by the Spanish government in 1950, through the good offices of the Consejo Superior de Investigaciones Científicas (Spanish National Research Council).
Rolls Series	A collection of 724 volumes of official documents and records from England in the Middle Ages. It was compiled under the supervision of the then Master of the Rolls hence its name.
Collection of Documents on French Architecture and Topography	Literature and documents of 18th to 19th century Paris, such as the replica of a complete map of Paris, atlases, and historical documents, that are essential for researching the city's history and urban theory.



02



05



08

Please contact the relevant libraries regarding the usage of collections listed on pages 15 to 18. Rare materials that have been digitized may be viewed on the Kyoto University Rare Materials Digital Archive website.

Major Collections
<https://www.kulib.kyoto-u.ac.jp/collections/12502?lang=en>



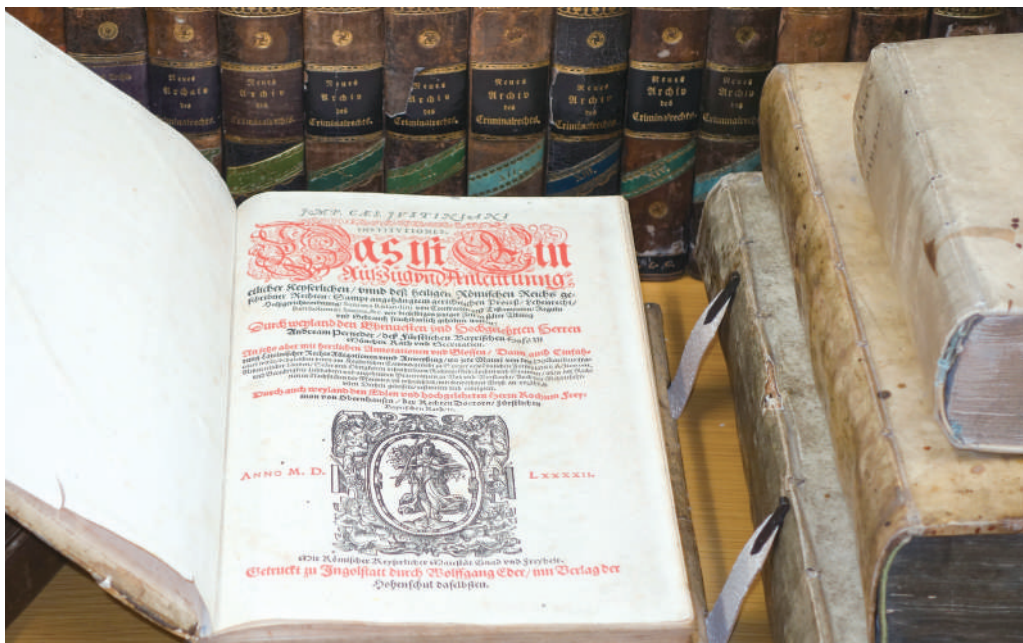
Kyoto University Rare Materials
Digital Archive
<https://rmda.kulib.kyoto-u.ac.jp/en>



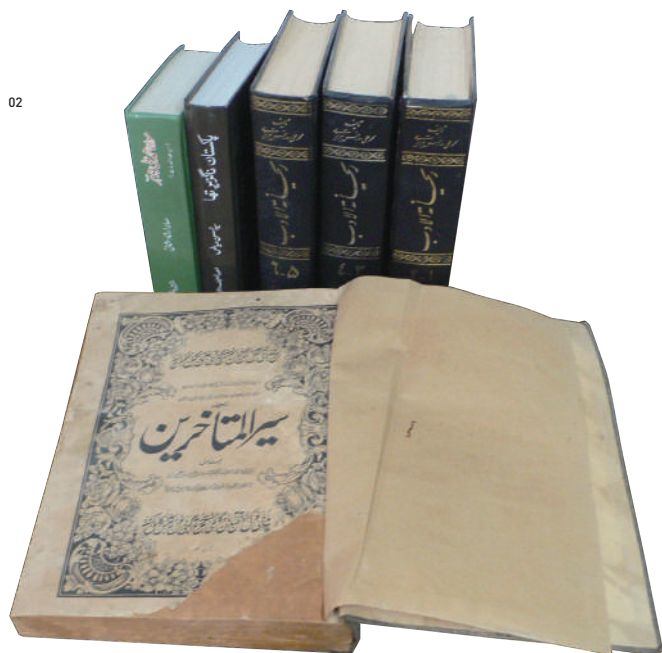
Major Collections

Departmental and Divisional Libraries

01

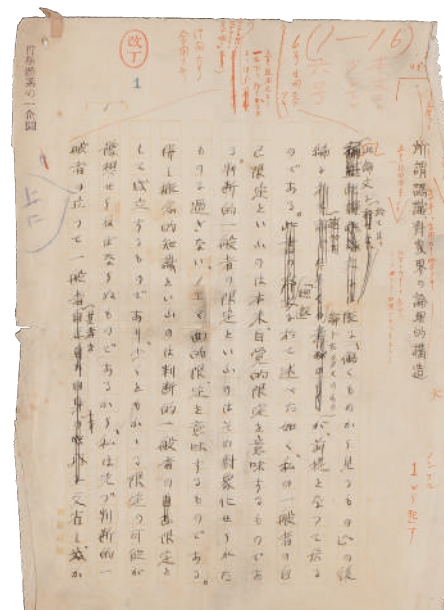


02



03

05



04



01. Graduate School of Law - Jescheck Collection / 02. Graduate School of Asian and African Area Studies - Moinuddin Aqeel Collection / 03. Graduate School of Science - The Rare Books Collection of the Faculty of Science Common Library. "Account of voyage of discovery to the west coast of Corea, and the Great Loo-Choo Island" by Basil Hall. 1818 / 04. Center for Southeast Asian Studies - Ocampo Collection / 05. Graduate School of Letters - Nishida Collection / 06. Graduate School of Engineering - Josiah Conder Drawings (Important Cultural Properties)

Graduate School of Letters

Ikedo Collection	A collection of books in Russian covering a wide range of subjects, including linguistics, literature, sociology and fine art, donated by Magoshichi Ikeda, an entrepreneur based in Kyoto. 2,159 items. (Linguistics)
Ebara Collection	A collection of materials on Japanese literature donated by the late Dr. Taizo Ebara, emeritus professor in the Faculty of Letters (Japanese Language and Literature), Kyoto University. Includes many manuscripts and woodblock-printed books of haiku, the professor's area of expertise. 6,040 items. (Japanese Language and Literature)
Kuwabara Collection	A collection of materials on Oriental history donated by the late Dr. Jitsuzo Kuwabara, emeritus professor in the Faculty of Letters (Oriental History), Kyoto University. Includes many books in Western languages due to the professor's area of expertise, the history of East-West relations. 12,457 items. (Oriental History)
Clarke Collection	A collection of books related to English literature, donated by the late Edward B. Clarke, a former professor in the Faculty of Letters (English Literature), Kyoto University. 5,133 items. (English Literature)
Nishida Collection	A collection of books related to philosophy donated by the late Dr. Kitaro Nishida, emeritus professor in the Faculty of Letters (Philosophy), Kyoto University. 1,627 items. (Philosophy)

Graduate School of Education

Konishi Collection	A collection of books once belonging to Dr. Shigenao Konishi, 9th president of Kyoto University. Includes many rare materials relating to educational principles in Japan before the 1940s. 482 items.
Takahashi Collection	A collection of books from the former library of Dr. Shunjo Takahashi. An essential collection for research into the history of educational philosophy in Japan. Includes books relating to educational philosophy especially from around the end of the Edo period. 1,364 items.

Graduate School of Law

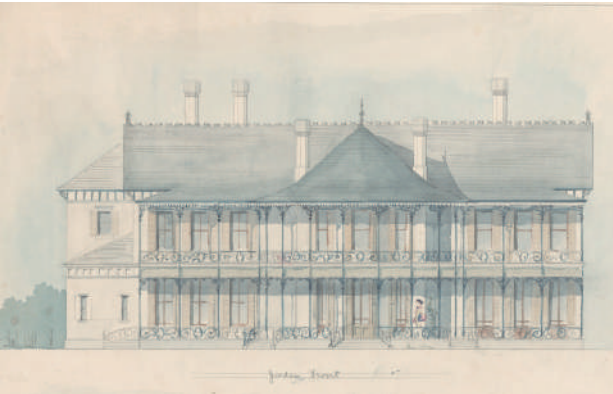
Hatschek Collection	A collection formerly owned by Julius Hatschek (1872–1926), a German scholar of constitutional law and administrative law. Owing to Hatschek's significant contribution to research on British public law as an expert in German and British legal systems at the time of the Weimar Republic, includes a great number of books on public law, as well as books on philosophy and history. 2,113 items.
Thaner Collection	A collection formerly owned by Friedrich Thamer, a German scholar of civil law. Includes numerous books on Canon Law, which, due to the importance of the role of the Church in German family law before the German Civil Code was established, are considered of great value in research into the history of the German legal system. 2,643 items.
Tuhr Collection	A collection formerly owned by Andreas von Tuhr (1864–1925), a German scholar of civil law. Includes a great number of books related to private law published in the 19th and 20th centuries, after the establishment of the German Historical School of Law. 1,933 items.
Jescheck Collection	A collection of books formerly owned by Dr. Hans-Heinrich Jescheck (1915–2009), a German scholar of criminal law who served as the director of the Max Planck Institute for Foreign and International Criminal Law, Germany. A valuable collection comprising basic materials related to criminal law in Germany and other major European countries that covers a broad period from the Middle Ages to the present. In particular, the collection includes a large number of books that are almost impossible to find elsewhere in Japan, such as materials on the nineteenth-century legislation of various countries. This can truly be called a collection of rare books. 572 items.
Kobayakawa Collection	A collection of books from the former collection of Kingo Kobayakawa (1900–1944), a professor at Kyoto Imperial University and legal history scholar. In addition to basic works on the legal history of Japan, the collection includes many other works, especially ancient documents and records of the Edo period and works from the Meiji period. 2,455 items.

Graduate School of Economics

Ueno Library	A major collection of books related to journalism, the mass media, and newspapers in Japan and overseas, which were donated by Junichi Ueno and his father Seichi Ueno, both former owners of the Asahi Shimbun Company. Contains many rare documents on politics, economics, philosophy, and history. Roughly 27,000 items.
Kawakami Library	A collection from the former library of Hajime Kawakami, a former professor in the Faculty of Economics at Kyoto University, and donated to the Faculty in 1969 to celebrate the 50th anniversary of the founding of the Faculty. Contains lecture notes and manuscripts as well as books. Roughly 2,700 items.

Graduate School of Science

Rare Books Collection of the Department of Mathematics	A collection of books written in western languages (264 items) related to mathematics from the 16th to 20th centuries, and books on Edo-period Japanese mathematics, astronomy and calendrical studies (586 items). 850 items.
A Collection of Rare Books and Semi-rare Books by the Faculty of Science Common Library	A collection of books in Japanese and western languages from the 16th to the 20th centuries on natural history, geology, paleontology, and conchology. 586 volumes.



Graduate School of Engineering

<div>Including Important Cultural Properties</div> <div>Josiah Conder Drawings (Important Cultural Properties)</div>	A collection of 468 architectural drawings by Dr. Josiah Conder, often referred to as the father of modern Japanese architecture, a British architect who worked as a foreign advisor to the Meiji government and had a hand in numerous architectural projects including the Rokumeikan and the Holy Resurrection Cathedral in Tokyo. Held in the Library of Architecture.
--	---

Yoshida-South Library

Hayashi Collection	A collection of books written in Japanese on Japanese literature received as a gift from Professor Moritaro Hayashi of the Third High School in October 1939. 88 items.
Mizobuchi Collection	A collection of books written in Japanese and western languages on subjects to do with education and philosophy bequeathed by Professor Shinma Mizobuchi of the Third High School and received in July 1939. 1,224 items.

Graduate School of Asian and African Area Studies

Mamoud Ayoub Collection	This collection of the private library of Professor Mahmoud Ayoub, a former professor of Temple University, is composed of about 1,700 volumes of Arabic books and about 1,000 volumes in European languages on Islamic Studies.
Moinuddin Aqeel Collection	This collection of the private library of Professor Moinuddin Aqeel, a former professor of Karachi University, includes more than 20,000 books mainly in Urdu, but also in Arabic, Persian and English. It covers a vast range of the studies on South Asian Islam such as history, politics, literature and religion. This is estimated as the second largest collection of Urdu books after British Library.
Collection of The Academic Alpine Club of Kyoto	A collection of about 4,400 books formerly housed in The Academic Alpine Club of Kyoto (AACK). Wide range of materials on scientific expedition and mountain climbing, particularly in Asia and Africa.
Kirk-Green Collection	Kirk-Green collection is part of research materials collected by an eminent Africanist Dr. Kirk-Green, who worked at Oxford University and other research institutes. It includes research materials regarding history, ethnic society, politics, and economics of Africa, particularly Nigeria.

Institute for Research in Humanities

Saint-Simon, Fourier Collection	A collection of pamphlets and research materials relating to, and books authored by, the French socialist theorists Henri de Saint-Simon and Charles Fourier. 93 items for Saint-Simon, 54 items for Fourier.
Yano Collection	A collection of 421 titles in 697 volumes written in Chinese, Japanese and western languages and collected in 1944 by the late Dr. Jinichi Yano, a former emeritus professor of Kyoto University, as organizer of the research group "Contemporary China", and donated in January 1958.
Muramoto Collection	A collection of 837 titles in 8,484 volumes donated in January 1941 by Eishu Muramoto (later Nakata), a former employee of the Osaka Asahi Shimbun Company. The contents of this collection cover nearly everything in the traditional fourfold library classification system of China.
Nakae Collection	Originally the collection of the Chinese scholar and humanitarian Ushikichi Nakae, and gifted to the library by a commemorative committee put together after his death, in September 1944. Comprises 355 titles in 6,037 volumes written in Chinese, 478 titles in 728 volumes written in western languages on sociology, 61 manuscripts, etc. and 245 letters bequeathed by Yoshinao Sakatani in 1998.

Institute of Economic Research

McKenzie Library	A collection of 1,495 books formerly belonging to the late Lionel McKenzie (1919–2010), a professor emeritus at the University of Rochester, mainly related to mathematical economics. Donated in October 2003.
------------------	---

Center for Southeast Asian Studies

Charas Collection	A collection of roughly 9,000 books and monographs formerly owned by Charas Pikul, a former officer of the Thai government. Contains nearly 4,000 volumes of Nagsue Ngan Sop, books published at the time of the cremation of important figures. One of the largest collections of this kind outside Thailand.
Foronda Collection	A collection of roughly 7,000 monographs and other materials formerly owned by Filipino historian Marcelino Foronda. Contains important documents for Philippine studies, including works of history, literature and ethnography of the Ilokos Region, but also underground publications and books banned under the Marcos regime, and a number of Catholic prayer books.
Ocampo Collection	A collection of roughly 1,000 items formerly owned by Filipino historian and writer Dr. Ambeth Ocampo. Includes publications related to the history of the Philippines from the second half of the 19th century to the beginning of the 20th century, various Catholic prayer books, and government publications including Congressional records.
Turkistan Collection (Turkestanskii Sbornik)	This is a digitized version of Turkestanskii sbornik-a compilation of various publications referring to Central Asia collected in Imperial Russia. It includes 594 volumes in original.
Malay Periodicals Collection	The collection includes ten Malay periodicals published in the mid-20th century in Malaysia as well as their digital data. This collection is an extremely important primary reference for Southeast Asian studies. With the Malay magazine Qalam (1950 to 1969) in particular.
Yoneo Ishii Collection	This collection of materials (books, research documents, photographs etc.) was compiled between 1957 and 2010 by the late Yoneo Ishii (1929–2010), a professor emeritus at Kyoto University.

Radiation Biology Center, Graduate School of Biostudies

Atomic Bomb Collection	Materials consisting of about 300 books related to the atomic bombs, which were broadly collected and donated to the Radiation Biology Center by Professor Emeritus Hiraku Takebe. The fact that research on the atomic bomb was also being advanced at Kyoto University was brought to light in an article in the Kyoto Shimbun on June 25, 2015. In 1995, the 50th anniversary of the dropping of the atomic bombs, many books were published in the US, almost all of which are included in this highly valuable collection.
------------------------	---



published in 2019

Edited and published : by Kyoto University Library Network

Yoshida-Honmachi, Sakyo-ku, Kyoto 606-8501, JAPAN

TEL.+81-75-753-2691 FAX.+81-75-753-2629

The latest information is available on the website

<https://www.kulib.kyoto-u.ac.jp/?lang=en>

