

Fabrication of (101)-oriented CsPbBr₃ thick films with high carrier mobility using a mist deposition method

Yuki Haruta¹, Takumi Ikenoue^{1*}, Masao Miyake¹, and Tetsuji Hirato¹

¹*Graduate School of Energy Science, Kyoto University, Kyoto, 606-8501, Japan*

E-mail: ikenoue.takumi.4m@kyoto-u.ac.jp

CsPbBr₃ is a promising candidate for highly sensitive flat-panel X-ray detectors due to its excellent optoelectronic properties. Thus, a method of preparing thick CsPbBr₃ films (> 10 μm) over large areas (> 10 × 10 cm²) is required. Herein, we report the fabrication of thick CsPbBr₃ films using a scalable mist deposition method. In this method, the film thickness was controlled and up-scaled by the number of deposition cycles. The obtained CsPbBr₃ films were composed of highly (101)-oriented columnar crystals and had a high carrier mobility of 13 cm² V⁻¹ s⁻¹, which is comparable to that for single crystals.

A highly sensitive flat-panel X-ray detector (FPD), which enables medical X-ray imaging at low dose, is required to reduce the risk of cancer¹). Amorphous selenium (a-Se) is commonly used for the photoconductive layer because it can be prepared through simple methods such as thermal evaporation. However, the sensitivity of FPD using a-Se is limited due to its low mobility-lifetime ($\mu\tau$) product of 10⁻⁶ cm² V⁻¹ 2,3). Solution-processed lead halide perovskite materials⁴⁻⁷) (CH₃NH₃PbI₃, CH₃NH₃PbBr₃, CsPbBr₃, *etc.*) are promising candidates for the photoconductive layer of highly-sensitive FPDs due to their excellent optoelectronic properties including a high attenuation coefficient and exceptional carrier transport properties⁸⁻¹¹). C. C. Stoumpos *et al.* prepared melt-grown CsPbBr₃ single crystals (SCs) with high $\mu\tau$ product of ~10⁻³ cm² V⁻¹ by using the Bridgman method and demonstrated that CsPbBr₃ is a promising candidate material for X- and γ -ray detection¹²). In addition, D. N. Dirin *et al.* succeeded the preparation of solution-grown CsPbBr₃ SCs by using the inverse temperature crystallization method (ITC) and reported its $\mu\tau$ product of ~10⁻⁴ cm² V⁻¹ which is slightly lower than that of melt-grown CsPbBr₃ SCs but higher than that of a-Se¹³). However, it is not feasible to prepare CsPbBr₃ SCs having large-area (> 10 × 10 cm²), which is required for FPD applications. Even CdTe SCs have not been applied to large-area FPD yet, although they have been already commercialized to X-ray detectors¹⁴). Hence,

polycrystalline films are considered as realistic choices for the photoconductive layer of FPD due to their potentials for large-scale fabrication. Recently, Zhi Yang *et al.* reported the preparation of CsPbBr₃ quantum dot film of 10 × 10 cm² for large-scale application of perovskite optoelectronics, but its thickness (< 800 nm) is not enough to absorb X-ray photons¹⁵. Over and above that, spin coating^{7,16–19}, layer-by-layer deposition²⁰, and other methods^{21–23} have been proposed to prepare polycrystalline CsPbBr₃ films. However, none of these methods are applicable to the preparation of thick CsPbBr₃ films (> 10 μm). Besides, the carrier transport properties of CsPbBr₃ polycrystalline films are often poor than that of SCs, resulting in poor device performances^{24,25}. Therefore, a scalable method for the preparation of thick CsPbBr₃ films with high carrier transport properties is required to achieve FPD application. A mist deposition method is a good candidate due to its track records of large-area film fabrication^{26–33} and hybrid perovskites film fabrication³⁴. In addition, this method seems to have potentials for the increase of film thickness by repeating fabrication process because a precursor solution is atomized and the mist is injected to the pre-heated underlying film, resulting in fast solvent-evaporation and the growth of the film without remarkable dissolution damages.

In this work, we report the fabrication of thick CsPbBr₃ films (> 20 μm) using the mist deposition method. The effect of the substrate temperature was studied and it was revealed that films formed at 150–170 °C were closely packed with (101)-oriented orthorhombic CsPbBr₃. In addition, the film thickness was controlled and up-scaled by the number of deposition cycles. The obtained CsPbBr₃ films were composed of highly (101)-oriented columnar crystals and had high carrier transport properties, which are comparable to that for CsPbBr₃ SCs.

CsPbBr₃ films were prepared using a mist deposition method (Figure 1). A precursor solution, which was prepared by dissolving 50 mM CsBr (Sigma-Aldrich, 99.999%) and 50 mM PbBr₂ (Sigma-Aldrich, 99.999%) in a solvent mixture of DMSO (Wako, 99.0%) and DMF (Wako, 99.5%) (1:1, volume ratio), was atomized by 2.4 MHz ultrasonic vibration. This mist was then transported by nitrogen gas and injected from a nozzle with a rectangular aperture (30 × 1 mm²) to the pre-heated glass substrate (130–190 °C) as a curtain-like flow. The carrier gas flow rate and dilution gas flow rate were set at 0.4 and 4.6 L min⁻¹, respectively. CsPbBr₃ can be uniformly deposited over a wide area by passing the substrate under the mist flow at a constant speed. In this study, CsPbBr₃ was deposited onto a reduced area of 25 × 6 mm² by moving the substrate by 6 mm at a speed of 0.16 mm s⁻¹. The deposition cycle was repeated to give a thick CsPbBr₃ film. X-ray diffraction (XRD) spectra

of CsPbBr₃ films were recorded using a PW 3040/60 X'Pert PRO with Cu-K α radiation. Cross-sections of the films were observed with scanning electron microscopy (SEM; JSM-6510LV, JEOL). To investigate the carrier transport properties, a Pt/CsPbBr₃/carbon structure was fabricated as follows: a Pt thin film as an ohmic electrode was formed on an ITO/glass substrate (25 × 20 mm²) by sputtering deposition. The CsPbBr₃ film was deposited onto the Pt film at 150 °C in the same way as the fabrication on glass substrates. Finally, a circular carbon ohmic electrode was deposited onto the CsPbBr₃ film by painting carbon ink and heating at 100 °C for 10 min. This process was chosen to prevent the CsPbBr₃ film from being damaged by heat or incident particles with a high energy. The active area was measured to be 0.07 cm². The dark current density-voltage curve was measured with a Keithley 2400 Source Meter. In this measurement, carbon and Pt electrodes served as the anode and cathode, respectively.

Figures 2(a)–(d) shows photographs of CsPbBr₃ films formed on glass substrates at various substrate temperatures (130–190 °C) to examine the temperature-dependence. Clear orange-colored films were obtained at 150–170 °C, while frosted films were obtained at 130 and 190 °C. The cross-sectional SEM images (Figs. 2(e)–(h)) showed that the films formed at 150–170 °C were composed of closely packed columnar crystals with diameters of 1–2 μ m, whereas those at lower and higher temperatures (130 and 190 °C) were composed of rough grains, corresponding to clear or frosted appearances (Figs. 2(a)–(d)). When the substrate temperature was set at 150–170 °C, the supply of precursor solution and solvent evaporation seemed to be well-balanced, resulting in the formation of high-quality films. The XRD patterns of the films corresponded to that of orthorhombic CsPbBr₃¹²⁾ (Fig. 2(i)). It is known that CsPbBr₃ exists in an orthorhombic structure at room temperature, with phase transitions to tetragonal and cubic structures at 88 °C and 130 °C, respectively¹²⁾. The films can be identified as an orthorhombic structure due to the specific peaks, such as (201) at $2\theta = 24.2^\circ$. The bandgap of the film derived from the visible absorption spectrum (Fig. 2(j)) was 2.33 eV, in agreement with the value reported for CsPbBr₃^{7,35,36)}. These results showed that CsPbBr₃ films were indeed obtained using the mist deposition method. Interestingly, the films formed at 150–170 °C were composed of highly (101)-oriented columnar crystals (Figs. 2(f), 2(g), and 2(i)). Columnar growth should be preferable because it creates few grain boundaries that cross the charge collection route, thus 150 °C was selected as the substrate temperature in the following sections.

The number of deposition cycles (N) was increased to fabricate thick CsPbBr₃ films. The film thickness increased in proportion to the number of deposition cycles (Figure 3(a)),

showing that the film thickness was controlled effectively in this method. In addition, columnar crystals continued growing while maintaining their structure (Figs. 3(b)–(d)).

The carrier transport properties of the CsPbBr₃ film in the direction vertical to the substrates were determined through space-charge limited current (SCLC) measurements³⁷⁾ with an ohmic device (Pt/CsPbBr₃/Carbon). In the current density-voltage ($J \approx V^n$) curve, ohmic ($n = 1$), trap-filling (TFL, $n > 3$), and Child ($n = 2$) regions were observed (Figure 4). The resistivity (R) was calculated from the ohmic region and the trap density (n_{trap}) was calculated using the equation:

$$n_{\text{trap}} = \frac{2V_{\text{TFL}}\varepsilon\varepsilon_0}{eL^2} \quad (1)$$

where V_{TFL} is the trap-filled limit voltage, L is the film thickness of 27.7 μm (measured from cross-sectional SEM image of this sample), ε_0 is the vacuum permittivity, e is the electron charge, and ε is the relative dielectric constant for CsPbBr₃ (~ 23.9 ³⁵⁾). The mobility (μ) was calculated from the Child region following Mott-Gurney's equation:

$$\mu = \frac{8J_D L^3}{9\varepsilon\varepsilon_0 V^2} \quad (2)$$

where J_D is the current density. The results of the SCLC measurements are summarized in Table I with previous reports. The resistivity (R) is 1.4 G Ω cm, which is comparable to that for solution-grown CsPbBr₃ SCs^{38,39)} and expected to contribute to the suppression of noise current. The trap-filled limit voltage (V_{TFL}) is 0.37 V for this sample and the trap density (n_{trap}) calculated from Equation (1) is $1.3 \times 10^{12} \text{ cm}^{-3}$, which is relatively higher than that for CsPbBr₃ SCs but lower than that for polycrystalline films^{40,41)}. In addition, the mobility (μ) calculated from Equation (2) is 13 $\text{cm}^2 \text{ V}^{-1} \text{ s}^{-1}$, which is comparable to that for CsPbBr₃ SCs^{35,38)} and higher than that for high-quality CsPbBr₃ thin films⁴⁰⁾. Generally, the mobility of polycrystalline films is lower than that for single crystals due to the grain boundaries. In the case of CH₃NH₃PbI₂Cl polycrystalline films, the dramatical deterioration of the mobility with increasing grain boundaries has been reported⁴²⁾. However, the CsPbBr₃ films fabricated by the mist deposition method had high carrier mobility. We speculate that reason as follows. As shown in the inset of Fig. 4, in the (101)-oriented CsPbBr₃ films, the [PbBr₆]⁴⁻ octahedrons align in the direction of charge collection and the Br-Pb-Br continuous bonds form straight chains, leading to effective carrier transport³⁵⁾. In addition, the columnar growth created few grain boundaries to disturb carrier transport. Both (101)-orientation and columnar growth seemed to contribute to the high carrier mobility.

In conclusion, a mist deposition method was successfully applied for the fabrication of thick CsPbBr₃ films. Highly (101)-oriented CsPbBr₃ films composed of columnar crystals

were obtained in a temperature range of 150–170 °C. Furthermore, the film thickness was controlled and up-scaled by the number of deposition cycles. The CsPbBr₃ film had excellent carrier transport properties comparable to single crystals, such as the mobility of 13 cm² V⁻¹ s⁻¹. Therefore, the application of CsPbBr₃ films to FPDs will be proceeded using mist deposition method.

Acknowledgments

This work was supported by Hamamatsu Photonics K. K. and JSPS KAKENHI (Grant No. 17K18988, 18K18943).

References

- 1) M.J. Yaffe and J.A. Rowlands, *Phys. Med. Biol.* **42**, 1 (1997).
- 2) M. Choquette, H. Rougeot, J. Martin, L. Laperriere, Z. Shukri, and B. Polischuk, *Proc. SPIE* **3977**, 128 (2000).
- 3) G. Belev and S.O. Kasap, *J. Non. Cryst. Solids* **345–346**, 484 (2004).
- 4) A. Kojima, K. Teshima, Y. Shirai, and T. Miyasaka, *J. Am. Chem. Soc.* **131**, 6050 (2009).
- 5) A. Wakamiya, M. Endo, T. Sasamori, N. Tokitoh, Y. Ogomi, S. Hayase, and Y. Murata, *Chem. Lett.* **43**, 711 (2014).
- 6) K. Tanaka, T. Takahashi, T. Ban, T. Kondo, K. Uchida, and N. Miura, *Solid State Commun.* **127**, 619 (2003).
- 7) M. Kulbak, D. Cahen, and G. Hodes, *J. Phys. Chem. Lett.* **6**, 2452 (2015).
- 8) Y.C. Kim, K.H. Kim, D.-Y. Son, D.-N. Jeong, J.-Y. Seo, Y.S. Choi, I.T. Han, S.Y. Lee, and N.-G. Park, *Nature* **550**, 87 (2017).
- 9) W. Wei, Y. Zhang, Q. Xu, H. Wei, Y. Fang, Q. Wang, Y. Deng, T. Li, A. Gruverman, L. Cao, and J. Huang, *Nat. Photonics* **11**, 315 (2017).
- 10) H. Wei, Y. Fang, P. Mulligan, W. Chuirazzi, H.-H. Fang, C. Wang, B.R. Ecker, Y. Gao, M.A. Loi, L. Cao, and J. Huang, *Nat. Photonics* **10**, 333 (2016).
- 11) H. Wei and J. Huang, *Nat. Commun.* **10**, 1066 (2019).
- 12) C.C. Stoumpos, C.D. Malliakas, J.A. Peters, Z. Liu, M. Sebastian, J. Im, T.C. Chasapis, A.C. Wibowo, D.Y. Chung, A.J. Freeman, B.W. Wessels, and M.G. Kanatzidis, *Cryst. Growth Des.* **13**, 2722 (2013).
- 13) D.N. Dirin, I. Cherniukh, S. Yakunin, Y. Shynkarenko, and M. V Kovalenko, *Chem. Mater.* **28**, 8470 (2016).
- 14) S. Del Sordo, L. Abbene, E. Caroli, A.M. Mancini, A. Zappettini, and P. Ubertini, *Sensors* **9**, 3491 (2009).
- 15) Z. Yang, M. Wang, J. Li, J. Dou, H. Qiu, and J. Shao, *ACS Appl. Mater. Interfaces* **10**, 26387 (2018).
- 16) J. Duan, Y. Zhao, X. Yang, Y. Wang, B. He, and Q. Tang, *Adv. Energy Mater.* **8**, 1802346

(2018).

- 17) C. Li, C. Han, Y. Zhang, Z. Zang, M. Wang, X. Tang, and J. Du, *Sol. Energy Mater. Sol. Cells* **172**, 341 (2017).
- 18) K.C. Tang, P. You, and F. Yan, *Sol. RRL* **2**, 1800075 (2018).
- 19) J. Liang, C. Wang, Y. Wang, Z. Xu, Z. Lu, Y. Ma, H. Zhu, Y. Hu, C. Xiao, X. Yi, G. Zhu, H. Lv, L. Ma, T. Chen, Z. Tie, Z. Jin, and J. Liu, *J. Am. Chem. Soc.* **138**, 15829 (2016).
- 20) J.B. Hoffman, G. Zaiats, I. Wappes, and P. V Kamat, *Chem. Mater.* **29**, 9767 (2017).
- 21) J. Lei, F. Gao, H. Wang, J. Li, J. Jiang, X. Wu, R. Gao, Z. Yang, and S. (Frank) Liu, *Sol. Energy Mater. Sol. Cells* **187**, 1 (2018).
- 22) T. Burwig, W. Fränzel, and P. Pistor, *J. Phys. Chem. Lett.* **9**, 4808 (2018).
- 23) J.B. Hoffman, A.L. Schleper, and P. V Kamat, *J. Am. Chem. Soc.* **138**, 8603 (2016).
- 24) J. Li, X. Shan, S.G.R. Bade, T. Geske, Q. Jiang, X. Yang, and Z. Yu, *J. Phys. Chem. Lett.* **7**, 4059 (2016).
- 25) N. Yantara, S. Bhaumik, F. Yan, D. Sabba, H.A. Dewi, N. Mathews, P.P. Boix, H.V. Demir, and S. Mhaisalkar, *J. Phys. Chem. Lett* **6**, 4360 (2015).
- 26) D.S. Bhachu, D.O. Scanlon, E.J. Saban, H. Bronstein, I.P. Parkin, C.J. Carmalt, and R.G. Palgrave, *J. Mater. Chem. A* **3**, 9071 (2015).
- 27) T. Ikenoue, H. Nishinaka, and S. Fujita, *Thin Solid Films* **520**, 1978 (2012).
- 28) Y. Kamada, T. Kawaharamura, H. Nishinaka, and S. Fujita, *Jpn. J. Appl. Phys.* **45**, L857 (2006).
- 29) J. Piao, S. Katori, T. Ikenoue, and S. Fujita, *Jpn. J. Appl. Phys.* **50**, 020204 (2011).
- 30) T. Ikenoue, S. Sakamoto, and Y. Inui, *Phys. Status Solidi* **11**, 1237 (2014).
- 31) T. Ikenoue, S. Sakamoto, and Y. Inui, *Jpn. J. Appl. Phys.* **53**, 05FF06 (2014).
- 32) J. Piao, S. Katori, T. Ikenoue, and S. Fujita, *Phys. Status Solidi* **209**, 1298 (2012).
- 33) T. Ikenoue, N. Kameyama, and S. Fujita, *Phys. Status Solidi* **8**, 613 (2011).
- 34) H. Nishinaka and M. Yoshimoto, *Jpn. J. Appl. Phys.* **55**, 100308 (2016).
- 35) P. Zhang, G. Zhang, L. Liu, D. Ju, L. Zhang, K. Cheng, and X. Tao, *J. Phys. Chem. Lett.* **9**, 5040 (2018).
- 36) Y. He, L. Matei, H.J. Jung, K.M. McCall, M. Chen, C.C. Stoumpos, Z. Liu, J.A. Peters, D.Y. Chung, B.W. Wessels, M.R. Wasielewski, V.P. Dravid, A. Burger, and M.G. Kanatzidis, *Nat. Commun.* **9**, 1609 (2018).
- 37) R.H. Bube, *J. Appl. Phys.* **33**, 1733 (1962).
- 38) M.I. Saidaminov, M.A. Haque, J. Almutlaq, S. Sarmah, X.-H. Miao, R. Begum, A.A. Zhumeckenov, I. Dursun, N. Cho, B. Murali, O.F. Mohammed, T. Wu, and O.M. Bakr, *Adv. Opt.*

Mater. **5**, 1600704 (2017).

39) H. Zhang, X. Liu, J. Dong, H. Yu, C. Zhou, B. Zhang, Y. Xu, and W. Jie, Cryst. Growth Des. **17**, 6426 (2017).

40) J. Zeng, X. Li, Y. Wu, D. Yang, Z. Sun, Z. Song, H. Wang, and H. Zeng, Adv. Funct. Mater. **28**, 1804394 (2018).

41) J. Feng, X. Yan, Y. Liu, H. Gao, Y. Wu, B. Su, and L. Jiang, Adv. Mater. **29**, 1605993 (2017).

42) W. Nie, H. Tsai, R. Asadpour, J.-C. Blancon, A.J. Neukirch, G. Gupta, J.J. Crochet, M. Chhowalla, S. Tretiak, M.A. Alam, H.-L. Wang, and A.D. Mohite, Science (80-.). **347**, 522 (2015).

43) J. Song, Q. Cui, J. Li, J. Xu, Y. Wang, L. Xu, J. Xue, Y. Dong, T. Tian, H. Sun, and H. Zeng, Adv. Opt. Mater. **5**, 1700157 (2017).

Figure Captions

Fig. 1. Schematic image of the mist deposition method.

Fig. 2. (a)–(d) Photographs and (e)–(h) cross-sectional SEM images of the CsPbBr₃ films formed at (a, e) 130, (b, f) 150, (c, g) 170, and (d, h) 190 °C. Scale bars are 5 μm. (i) XRD patterns of films formed at 130–190 °C, (j) Tauc plot for the film formed at 150 °C.

Fig. 3. (a) Relation between the film thickness and the number of deposition cycles, N , (b)–(d) cross-sectional SEM images of films formed at deposition cycles of (b) 10, (c) 30, and (d) 50. Scale bars are 10 μm.

Fig. 4. Dark current density-voltage characteristics of a CsPbBr₃ film.

Table I Carrier transport properties and size comparisons of CsPbBr₃ from previous reports.

Method	Structure	Size	R [G Ω cm]	n_{trap} [cm ⁻³] electron / hole	μ [cm ² V ⁻¹ s ⁻¹] electron / hole	Ref.
Bridgman	SC	ϕ 24 mm \times 90 mm	–	$1.08 \times 10^9 / -$	11.61 / –	35)
Bridgman	SC	ϕ 25 mm \times 70 mm	–	$- / 1.2 \times 10^9$	2290 / 2060	43)
ITC	SC	3 mm \times 2 mm \times 1 mm	0.1	$1.1 \times 10^{10} / 4.2 \times 10^{10}$	52 / 11	38)
AVC*	SC	42 mm \times 5 mm \times 3 mm	2.1	–	– / 143	39)
Spin-coating	thin film	–	–	1.40×10^{16}	–	41)
Spin-coating	porous film	40 mm \times 40 mm \times $<1 \mu\text{m}$	–	3.07×10^{12}	9.27	40)
Mist deposition	thick film	25 mm \times 6 mm \times 28 μm	1.4	1.3×10^{12}	13	This work

*AVC; Anti-solvent vapor-assisted crystallization

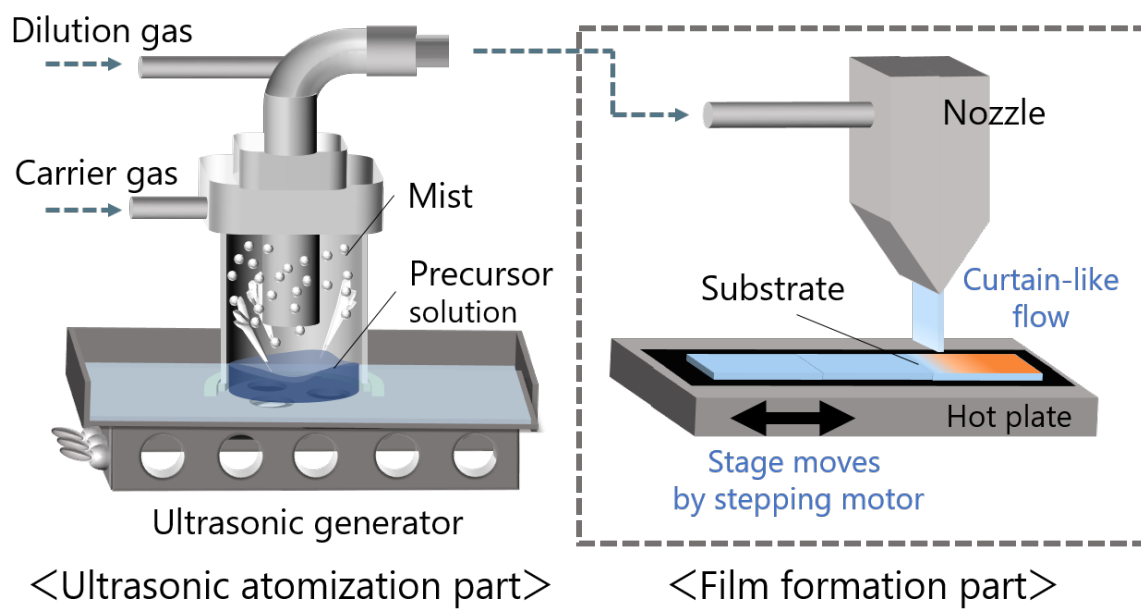


Fig. 1.

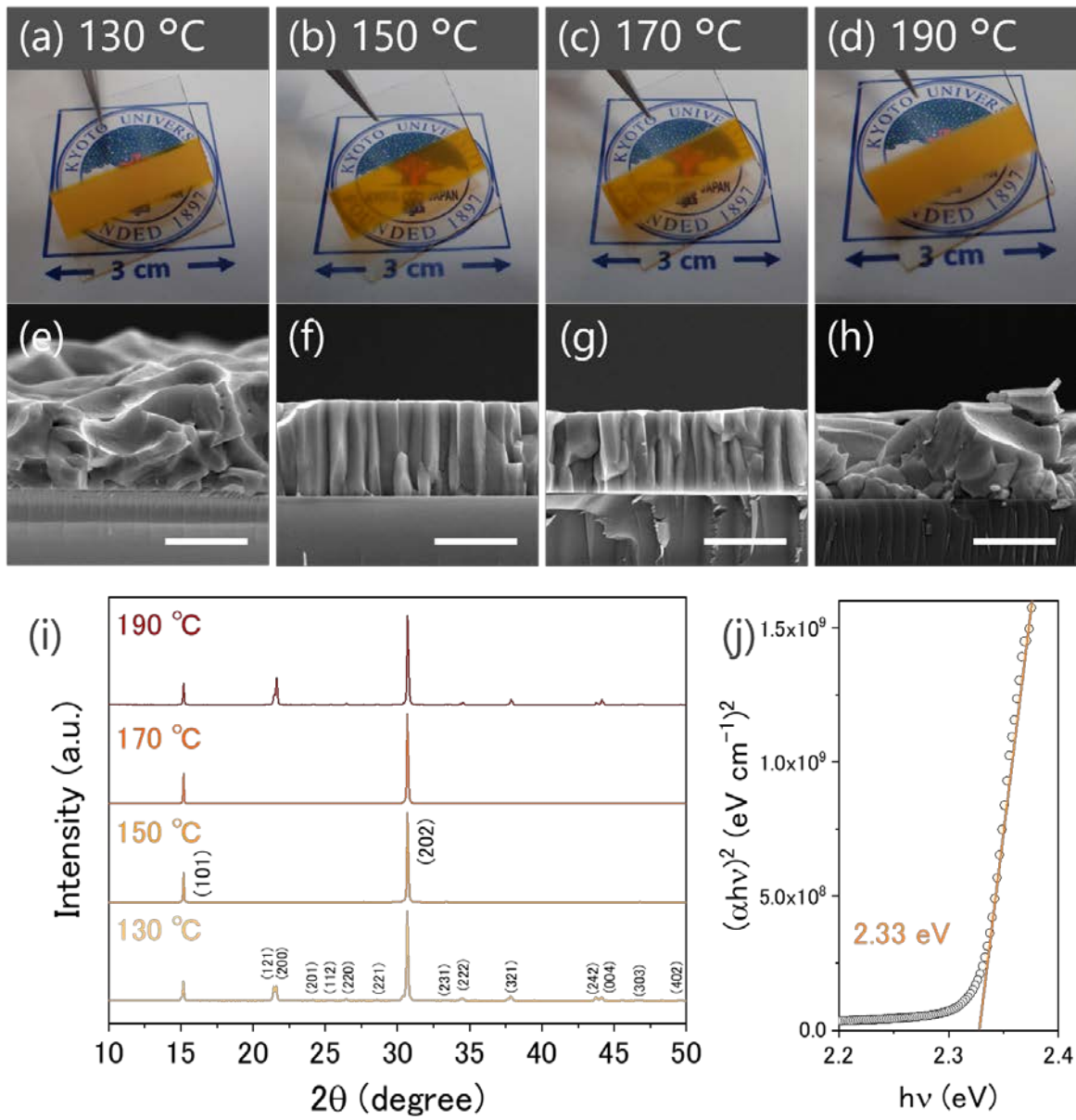


Fig. 2.

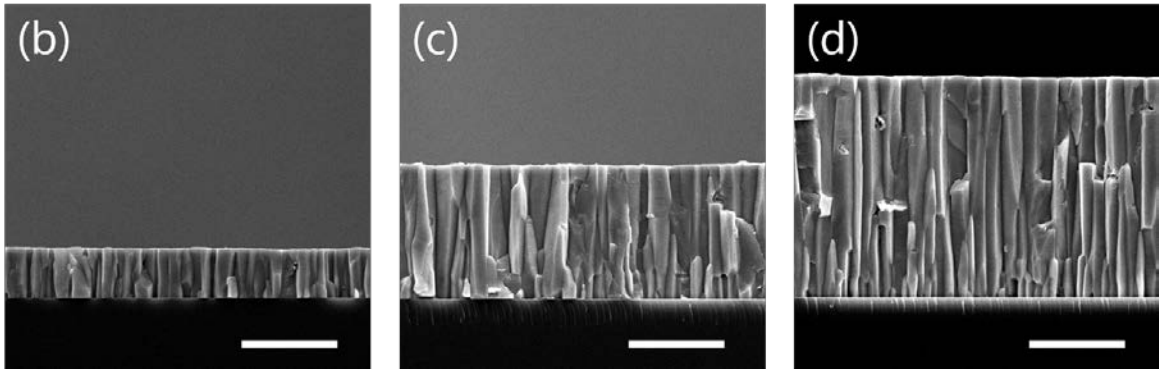
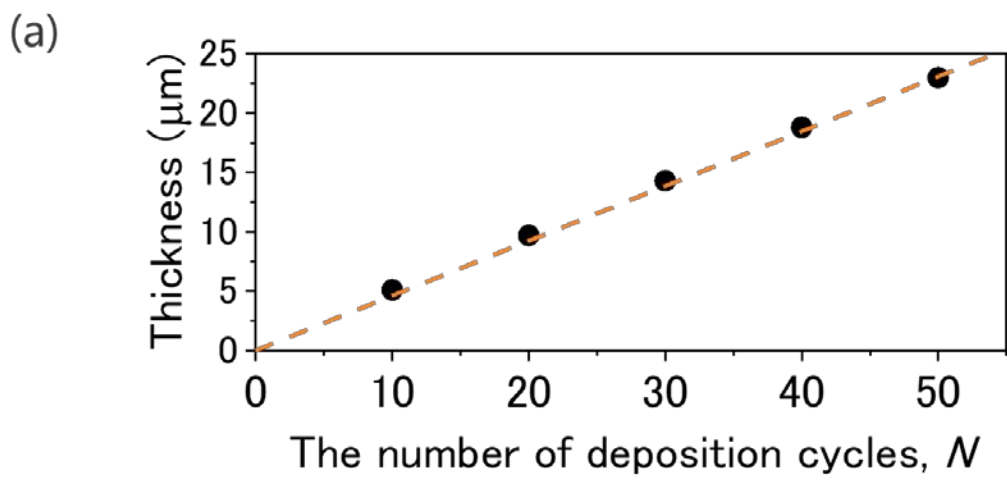


Fig. 3.

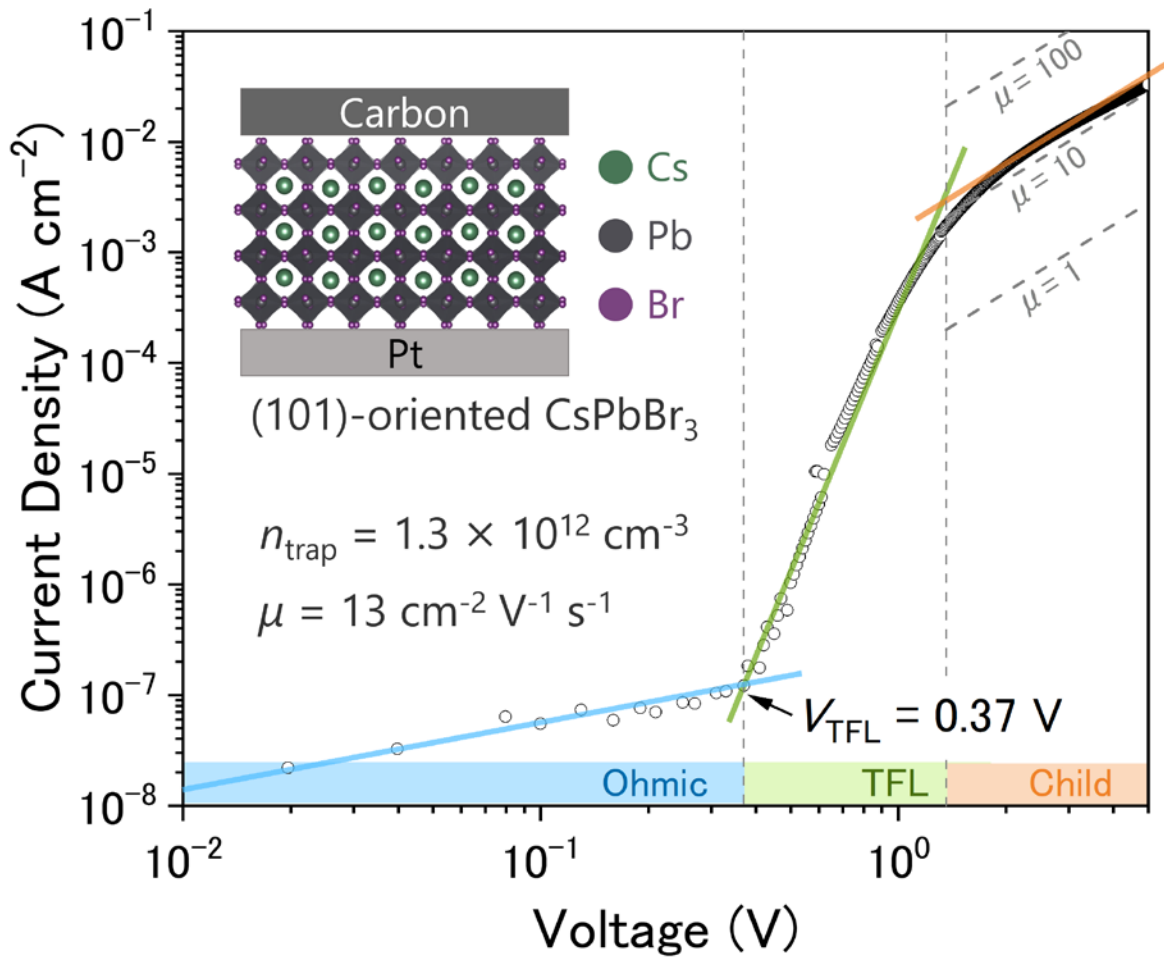


Fig. 4.