




Real-world effectiveness and safety analysis of carfilzomib–lenalidomide–dexamethasone and carfilzomib–dexamethasone in relapsed/refractory multiple myeloma: a multicenter retrospective analysis

Yoshiyuki Onda , Junya Kanda , Hitomi Kaneko, Yuji Shimura, Shin-ichi Fuchida, Aya Nakaya, Tomoki Itou, Ryosuke Yamamura, Hirokazu Tanaka, Hirohiko Shibayama, Yutaka Shimazu , Hitoji Uchiyama, Satoshi Yoshihara, Yoko Adachi, Mitsuhiro Matsuda, Hitoshi Hanamoto, Nobuhiko Uoshima, Satoru Kosugi, Kensuke Ohta, Hideo Yagi, Yuzuru Kanakura, Itaru Matsumura, Masayuki Hino, Shosaku Nomura, Chihiro Shimazaki, Akifumi Takaori-Kondo, Junya Kuroda; The Kansai Myeloma Forum

Abstract

Background: Little is known about the real-world survival benefits and safety profiles of carfilzomib–lenalidomide–dexamethasone (KRd) and carfilzomib–dexamethasone (Kd).

Methods: We performed a retrospective analysis to evaluate their efficacy and safety in 157 patients registered in the Kansai Myeloma Forum database.

Results: A total of 107 patients received KRd. Before KRd, 99% of patients had received bortezomib (54% were refractory disease), and 82% had received lenalidomide (57% were refractory disease). The overall response rate (ORR) was 68.2%. The median progression-free survival (PFS) and overall survival (OS) were 8.8 and 29.3 months, respectively. Multivariate analysis showed that reduction of the carfilzomib dose and non-IgG M protein were significantly associated with lower PFS and reduction of the carfilzomib dose and refractoriness to prior bortezomib-based regimens were significantly associated with lower OS. A total of 50 patients received Kd. Before Kd, 96% of patients had received bortezomib (54% were refractory disease). The ORR was 62.0%. The median PFS and OS were 7.1 and 20.9 months, respectively. Based on the multivariate analysis, reduction of the carfilzomib dose and International Staging System Stage III (ISS III) were significantly associated with lower PFS. Grade III or higher adverse events were observed in 48% of KRd cases and 54% of Kd cases. Cardiovascular events, cytopenia, and infections were frequent, and 4 KRd patients died due to heart failure, arrhythmia, cerebral hemorrhage, and pneumonia.

Conclusion: Our analysis showed that an adequate dose of carfilzomib is important for achieving the best survival benefits in a real-world setting. Adverse effects after KRd and Kd therapy should also be considered.

Keywords: carfilzomib, dexamethasone, Kd, KRd, lenalidomide, real-world efficacy and safety, relapsed/refractory multiple myeloma

Received: 1 December 2021; revised manuscript accepted: 16 May 2022.

Ther Adv Hematol

2022, Vol. 13: 1–16

DOI: 10.1177/
20406207221104584

© The Author(s), 2022.
Article reuse guidelines:
sagepub.com/journals-permissions

Correspondence to:

Junya Kanda
Department of Hematology
and Oncology, Graduate
School of Medicine,
Kyoto University, 54
Kawaharacho, Shogoin,
Sakyo-ku, Kyoto 606-8507,
Japan.
jkanda16@kuhp.kyoto-u.ac.jp

Yoshiyuki Onda
Department of Hematology
and Oncology, Graduate
School of Medicine, Kyoto
University, Kyoto, Japan

Department of
Hematology, Takatsuki
Red Cross Hospital, Osaka,
Japan

Hitomi Kaneko
Department of
Hematology, Osaka Red
Cross Hospital, Osaka,
Japan

Yuji Shimura
Junya Kuroda
Division of Hematology
and Oncology, Department
of Medicine, Kyoto
Prefectural University of
Medicine, Kyoto, Japan

Shin-ichi Fuchida
Chihiro Shimazaki
Department of
Hematology, Japan
Community Health care
Organization Kyoto
Kuramaguchi Medical
Center, Kyoto, Japan

Aya Nakaya

Tomoki Itou

Shosaku Nomura

Division of Hematology,
First Department of
Internal Medicine, Kansai
Medical University Medical
Center, Osaka, Japan

Ryosuke Yamamura

Department of
Hematology, Osaka
Saiseikai Nakatsu
Hospital, Osaka, Japan

Hirokazu Tanaka

Itaru Matsumura
Department of Hematology
and Rheumatology, Kindai
University Faculty of
Medicine, Osaka, Japan

Hirohiko Shibayama

Department of Hematology
and Oncology, Graduate
School of Medicine, Osaka
University, Osaka, Japan

Yutaka Shimazu

Department of Hematology
and Oncology, Graduate
School of Medicine, Kyoto
University, Kyoto, Japan

Department of
Hematology, Japanese Red
Cross Wakayama Medical
Center, Wakayama, Japan

Hitoji Uchiyama

Department of
Hematology, Japanese
Red Cross Kyoto Daiichi
Hospital, Kyoto, Japan

Satoshi Yoshihara

Division of Hematology,
Department of Internal
Medicine, Hyogo College of
Medicine, Hyogo, Japan

Yoko Adachi

Department of Internal
Medicine, JCHO Kobe
Central Hospital, Hyogo,
Japan

Mitsuhiro Matsuda

Department of
Hematology, PL General
Hospital, Osaka, Japan

Hitoshi Hanamoto

Department of
Hematology, Kinki
University Nara Hospital,
Nara, Japan

Nobuhiko Uoshima

Department of
Hematology, Japanese Red
Cross Kyoto Daini Hospital,
Kyoto, Japan

Satoru Kosugi

Department of Internal
Medicine (Hematology),
Toyonaka Municipal
Hospital, Osaka, Japan

Kensuke Ohta

Hematology Ohta Clinic,
Osaka, Japan

Introduction

In recent years, multiple proteasome inhibitors, immunomodulators, and antibody drugs for multiple myeloma (MM) have been introduced, which have greatly improved the treatment response, overall survival (OS) and progression-free survival (PFS).^{1–9} However, the prognosis of relapsed and refractory multiple myeloma (RRMM) is still poor. Carfilzomib is a next-generation selective and irreversible proteasome inhibitor¹⁰ that has been demonstrated to have robust and durable activity and a favorable safety and tolerability profile as a single-agent treatment in heavily pretreated patients with RRMM in phase I/II trials.^{11–15} The efficacy and safety of carfilzomib–lenalidomide–dexamethasone (KRd) and carfilzomib–dexamethasone (Kd) for RRMM were evaluated in phase III trials, ASPIRE and ENDEAVOR, respectively.^{16–19} In the ASPIRE and ENDEAVOR studies, KRd was significantly superior with respect to both of median PFS and OS to lenalidomide–dexamethasone (Rd), and Kd also gave a significantly better both median PFS and OS than bortezomib–dexamethasone (Vd), respectively. Adverse effects, including cardiovascular events, cytopenia, and infections, were reported and characterized by the relatively high frequency of cardiovascular events. The ASPIRE study showed heart failure in 6.4% of KRd participants, whereas the ENDEAVOR study showed congestive heart failure in 10.8% of Kd participants, and several patients died of cardiovascular events in the both studies. In real-world clinical practice, KRd and Kd have been used according to ASPIRE and ENDEAVOR, but the dose and frequency of administration have often been reduced as appropriate depending on the patient's age and general condition. There is little evidence or information available on the real-world use of KRd and Kd therapy. Then, we retrospectively analyzed the real-world efficacy and safety of KRd and Kd in Japanese patients who were registered in the Kansai Myeloma Forum (KMF) database.

Methods

Study design and participants

The KMF, a study group consisting of 46 hematological facilities in the Kansai region of Japan, was established in 2012 to register patients with myeloma-related disease. The group members

have created and share a clinical database with the aim of retrospectively analyzing treatment strategies and outcomes. In this study, we included 157 patients from 17 hospitals in the KMF database who received KRd ($n=107$) or Kd ($n=50$) therapy between March 2016 and June 2019. The observation period was terminated on June 30, 2019. We obtained patient consent to treatment from all patients. Patients were selected consecutively. Patients needed to have received at least 1 line of therapy before KRd or Kd. Relapsed and refractory MM were defined according to International Myeloma Working Group (IMWG) criteria.²⁰ Patients who achieved stringent complete response (sCR) through autologous hematopoietic stem cell transplantation (auto-HSCT) and received KRd as consolidation therapy were excluded. Further, we performed a secondary survey on detailed medical information.

Treatment

KRd was performed under the following conditions and based on insurance coverage. Patients with RRMM receive intravenous carfilzomib at a dose of 20 mg/m² on days 1 and 2, and then 27 mg/m² on days 8, 9, 15, and 16 of the first cycle and days 1, 2, 8, 9, 15, and 16 of subsequent cycles, dexamethasone 20 mg on days 1, 2, 8, 9, 15, 16, 22, and 23, and lenalidomide 25 mg orally on days 1–21 of each 28-day cycle.

As for Kd, RRMM patients receive intravenous carfilzomib at a dose of 20 mg/m² on days 1 and 2, and then 56 mg/m² on days 8, 9, 15, and 16 of the first cycle and days 1, 2, 8, 9, 15 and 16 of subsequent cycles, and dexamethasone 20 mg on days 1, 2, 8, 9, 15, 16, 22, and 23 of each 28-day cycle. Administration of carfilzomib 70 mg/m² once a week was allowed, although it had not yet been approved in Japan during the observation period.

The dosages of all drugs for KRd or Kd, antibacterial, antimycotic, and antiviral agents, and antiplatelet drugs were determined at the discretion of each physician. Responses were assessed according to the IMWG Uniform Response Criteria²¹ and designated as sCR, complete response (CR), very good partial response (VGPR), partial response (PR), stable disease (SD), and progressive disease (PD).

Endpoints

The primary endpoint was PFS. Secondary endpoints were OS and the safety and efficacy of KRd and Kd in terms of overall response rate (ORR) and toxicity. Therapeutic response and disease progression were assessed according to the IMWG criteria.²² All adverse events (AEs) were recorded using the Common Terminology Criteria for Adverse Events, version 5.0 of the National Cancer Institute Cancer Therapy Evaluation Program.

Statistical methods

Descriptive statistics were used to summarize variables related to patient characteristics. Comparisons between groups were performed with the chi-square statistic or extended Fisher exact test as appropriate for categorical variables. The probabilities of OS and PFS were estimated according to the Kaplan–Meier method, and the groups were compared with the log-rank test. The Cox proportional hazards model was used to evaluate the effect of variables on OS and PFS. Factors with $p < 0.10$ in the univariate analysis were added to the multivariate model. All tests were two-sided, and $p < 0.05$ was considered to indicate statistical significance. All statistical analyses were performed with Stata version 16.1 software (StataCorp, College Station, TX).

Results

The patient background is summarized in Table 1. In the KRd cohort, the median observation period of survivors was 23.1 (range, 0.8–33.5) months. The median age at the start of KRd was 67 (range, 41–84) years. Fourteen cases (13.1%) were above 75 years old, 21 (19.6%) had International Staging System Stage III (ISS III), and 31 (29.0%) had poor chromosomal risk, which was defined as the presence of either $\text{del}(17p)$, $t(4;14)(p16; q32)$, or $t(14;16)(q32; q23)$ in the fluorescence *in situ* hybridization (FISH) or G-BAND. The median number of prior therapies was 3 (range, 1–14). A total of 106 cases (99.1%) had received prior bortezomib-based regimens, and 58 of these 106 cases were refractory. In addition, 88 cases (82.2%) had received lenalidomide-based regimens, and 61 of these 88 cases were refractory. The dose of carfilzomib was not reduced in 69 cases (64.5%), and the dose was reduced by more than 40% within the three courses in 14 cases (13.1%). The dose

of lenalidomide was not reduced in 19 cases (17.8%), and the dose was reduced by more than 40% within the three courses in 62 cases (57.9%). The median number of KRd cycles was 3 (range, 1–19) (Supplement Table 1). KRd was discontinued in 104 cases, and the reasons for discontinuation were PD in 38 cases (35.5%), AEs in 37 cases (34.6%), a switch to auto-HSCT in 12 cases (11.2%), and achievement of a good therapeutic effect (CR or VGPR) in 3 cases (2.8%).

In the Kd cohort, the median observation period of survivors was 15.8 months (range, 1.0–61.3). The median age at the start of Kd was 69 (range, 35–88) years. Sixteen cases (32.0%) were above 75 years old, 13 (26.0%) had ISS III, and 12 (24.0%) had poor chromosomal risk. The median number of prior therapies was 3.5 (1–12), 48 cases (96.0%) had received prior bortezomib-based regimens, and 27 of these 48 cases were refractory. The dose of carfilzomib was not reduced within the three courses in 20 cases (40.0%), and the dose was reduced by more than 40% in 18 cases (36.0%). Nine cases (18.0%) received once-weekly carfilzomib administration. The median number of Kd cycles was 4 (range, 1–36, Supplement Table 1). Kd was discontinued in all 50 cases, and the reasons for discontinuation were PD in 26 cases (52.0%), AEs in 13 cases (26.0%), and a switch to auto-HSCT in 4 cases (8.0%).

Safety

Grade III or higher AEs with KRd or Kd are summarized in Table 2. In the KRd cohort, the most common AEs were hematological toxicities (anemia, thrombocytopenia, leukopenia), and these were observed in 25 cases (23.4%). Cardiovascular toxicities (heart failure, arrhythmia, hypertension, and pulmonary hypertension) occurred in 14 cases (13.1%), and infections (pneumonia, sepsis, CMV infection, etc.) were seen in 16 cases (15.0%). Four patients died of heart failure, arrhythmia, intracerebral hemorrhage, or pneumonia, respectively.

The incidence of cardiovascular AEs was 28.6% for patients 75 years old and above, 14.6% for those aged 65–74, and 8.9% for those under 65 ($p = 0.178$). Non-cardiovascular AEs occurred in 57.1% of patients 75 years old and above, in 37.5% of those aged 65–74, and in 35.6% of those under 65 ($p = 0.333$) (Supplement Table 2).

Hideo Yagi
Department of Hematology and Oncology, Nara Prefecture General Medical Center, Nara, Japan

Yuzuru Kanakura
Sumitomo Hospital, Osaka, Japan

Masayuki Hino
Department of Hematology, Graduate School of Medicine, Osaka City University, Osaka, Japan

Akifumi Takaori-Kondo
Department of Hematology and Oncology, Graduate School of Medicine, Kyoto University, Kyoto, Japan

Table 1. Patient demographics and baseline characteristics.

	KRd	Kd
Characteristic	<i>n</i> = 107	<i>n</i> = 50
Median age, year (range)	67 (41–84)	69 (35–88)
<65	45 (42.0%)	16 (32.0%)
65–74	48 (44.9%)	18 (36.0%)
>75	14 (13.1%)	16 (32.0%)
Male, <i>n</i> (%)	53 (49.5%)	21 (42.0%)
Median time from first treatment, month (range)	30.8 (0.8–126.9)	35.4 (1.5–138.2)
Type of M protein, <i>n</i> (%)		
IgG	61 (57.0%)	30 (60.0%)
IgA	17 (15.9%)	10 (20.0%)
BJP	25 (23.4%)	9 (18.0%)
Light-chain subtype, <i>n</i> (%)		
Kappa	60 (56.1%)	31 (62.0%)
Lambda	41 (38.3%)	18 (36.0%)
Not reported/missing	6 (5.6%)	1 (2.0%)
ECOG performance status, <i>n</i> (%)		
0	56 (52.3%)	26 (52.0%)
1	23 (21.5%)	14 (28.0%)
2	8 (7.5%)	4 (8.0%)
3	8 (7.5%)	3 (6.0%)
4	7 (6.5%)	1 (2.0%)
Not reported/missing	5 (4.7%)	2 (4.0%)
ISS stage, <i>n</i> (%)		
I or II	78 (72.9%)	36 (72.0%)
III	21 (19.6%)	13 (26.0%)
Not reported/missing	8 (7.5%)	1 (2.0%)
Cytogenetic/FISH prognostic markers, <i>n</i> (%)		
Normal/favorable	44 (41.1%)	26 (52.0%)
Poor	31 (29.0%)	12 (24.0%)
Unknown or not done	32 (29.9%)	12 (24.0%)

(Continued)

Table 1. (Continued)

	KRd	Kd
Median no. of prior regimens (range)	3 (1–14)	3.5 (1–12)
Prior therapy, <i>n</i> [%]		
Bortezomib	106 (99.1%)	48 (96.0%)
Refractory to bortezomib in any previous regimen	58 (54.2%)	27 (54.0%)
Lenalidomide	88 (82.2%)	43 (86.0%)
Refractory to lenalidomide in any previous regimen	61 (57.0%)	35 (70.0%)

BJP, Bence-Jones protein; ECOG, Eastern Cooperative Oncology Group; FISH, fluorescence *in situ* hybridization; ISS, International Staging System; Kd, carfilzomib and dexamethasone; KRd, carfilzomib, lenalidomide, and dexamethasone.

In the Kd cohort, the most common AEs were hematological toxicities (anemia, thrombocytopenia, and leukopenia), and these were observed in 20 cases (40.0%). Infections (pneumonia, osteomyelitis, etc.) occurred in 11 cases (22.0%), cardiovascular toxicities (heart failure, hypertension) were seen in 4 cases (8.0%), and liver dysfunction was seen in 4 cases (8.0%). None of the patients died of AEs. No association was found between the age of patients and either cardiovascular AEs ($p=0.294$) or non-cardiovascular AEs ($p=0.913$).

Efficacy and survival outcomes of KRd

In the KRd cohort, ORR was 68.2%, VGPR or better was 34.6%, and CR + sCR was 15.0% (Table 3). Relapse or PD was observed in 69 patients (64.5%), and 44 patients (41.1%) died during the observation period.

The median PFS was 8.8 months, and the 1-year PFS rate was 41.0% (Figure 1). Univariate analysis showed significant differences in PFS regarding age (1 year PFS: <65 years old, 46.6%; 65–74, 38.5%; ≥ 75 , 31.2%, $p=0.049$), type of M protein (IgG, 52.9%; non-IgG, 23.2%; $p<0.001$), number of prior lines of therapy (1 or 2 lines, 60.9%; ≥ 3 lines, 30.5%; $p=0.011$), refractoriness to bortezomib (sensitive, 58.3%; refractory, 26.4%; $p<0.001$), refractoriness to lenalidomide (sensitive, 60.7%; refractory, 26.7%; $p<0.001$), period from initial treatment to KRd (<2 years, 55.0%; ≥ 2 years, 32.5%; $p=0.022$), reduction in the dose of carfilzomib (100% dose, 48.4%; 60–99%, 30.5%; <60%, 21.4%; $p=0.007$), and reduction in the dose of lenalidomide (100% dose, 57.4%;

60–99%, 46.6%; <60%, 33.4%; $p=0.004$; Table 4, Figure 2, Supplement Figures 1 and 2). Multivariate analysis showed significantly shorter PFS in non-IgG M protein [hazard ratio (HR), 2.48, 95% confidence interval (CI): 1.42 – 4.33, $p=0.001$] and reduction in the dose of carfilzomib to less than 60% (<60% *vs* 100%: HR, 3.05, 95% CI: 1.40–6.62, $p=0.005$; Table 4).

The median OS was 29.3 months, and the 1-year OS rate was 72.6% (Figure 1). Univariate analysis showed significant differences in OS regarding type of M protein (1-year OS: IgG, 79.2%; non-IgG, 64.3%; $p=0.013$), number of prior lines of therapy (1 or 2 lines, 82.7%; ≥ 3 lines, 67.3%; $p=0.008$), period from initial treatment to KRd (<2 years, 82.1%; ≥ 2 years, 66.7%; $p=0.025$), refractoriness to bortezomib (sensitive, 83.1%; refractory 63.8%; $p=0.006$), refractoriness to lenalidomide (sensitive, 83.4%; refractory 64.3%; $p=0.003$), and reduction in the dose of carfilzomib (100% dose, 81.7%; 60–99%, 64.3%; <60%, 40.8%; $p=0.018$; Figure 2, Supplement Figures 1 and 2). Multivariate analysis revealed significantly shorter OS in carfilzomib reduction (100% *vs* <60%: HR 3.66, 95% CI: 1.47–9.10, $p=0.005$) and prior bortezomib sensitivity (sensitive *vs* refractory: HR 2.33, 95% CI: 1.01–5.37, $p=0.047$; Table 4).

Seven patients received KRd after auto-HSCT as consolidation therapy, and their ORR was 100% (sCR: 2 cases, VGPR: 3 cases, and PR: 2 cases). In these patients, the median observation period of survivors was 28.0 months (range, 5.2–33.4). Twelve-month PFS, 24-month PFS, 12-month OS, and 24-month OS were 40.0%, 40.0%,

Table 2. Adverse events.

	KRd			Kd		
	<i>n</i> = 107			<i>n</i> = 50		
	Grade III	Grade IV	Grade V	Grade III	Grade IV	Grade V
Cardiac failure	7 (6.5%)	2 (1.9%)	1 (0.9%)	2 (4.0%)	0	0
Hypertension	1 (0.9%)	0	0	2 (4.0%)	0	0
Pulmonary hypertension	1 (0.9%)	0	0	0	0	0
Arrhythmia	0	0	1 (0.9%)	0	0	0
Cerebral hemorrhage	0	0	1 (0.9%)	0	0	0
Vasculitis	1 (0.9%)	0	0	0	0	0
Deep vein thrombosis	0	0	0	1 (2.0%)	0	0
Anemia	10 (9.3%)	5 (4.7%)	0	5 (10.0%)	2 (4.0%)	0
Thrombocytopenia	10 (9.3%)	7 (6.5%)	0	8 (16.0%)	7 (14.0%)	0
Leukopenia	9 (8.4%)	5 (5.4%)	0	5 (10.0%)	3 (6.0%)	0
Pneumonia	4 (3.7%)	0	1 (0.9%)	5 (10.0%)	3 (6.0%)	0
Osteomyelitis	0	0	0	0	1 (2.0%)	0
Cellulitis	0	0	0	1 (2.0%)	0	0
Bronchitis	3 (2.8%)	0	0	0	0	0
Urinary tract infection	1 (0.9%)	0	0	0	0	0
Sepsis	0	2 (1.9%)	0	0	0	0
Febrile neutropenia	1 (0.9%)	1 (0.9%)	0	0	0	0
Cytomegalovirus infection	1 (0.9%)	0	0	1 (2.0%)	0	0
Diarrhea	1 (0.9%)	0	0	0	0	0
Gastrointestinal hemorrhage	2 (1.9%)	0	0	0	0	0
Anorexia	1 (0.9%)	0	0	0	0	0
Fatigue	1 (0.9%)	1 (0.9%)	0	1 (2.0%)	0	0
Hyperglycemia	1 (0.9%)	0	0	0	0	0
Renal dysfunction	1 (0.9%)	1 (0.9%)	0	0	0	0
Liver dysfunction	4 (3.7%)	0	0	4 (8.0%)	0	0
Peripheral neuropathy	1 (0.9%)	0	0	0	0	0
Tumor lysis syndrome	2 (1.9%)	1 (0.9%)	0	0	0	0
Drug eruption	1 (0.9%)	0	0	0	0	0
Fever	0	1 (0.9%)	0	0	0	0
Delirium	1 (0.9%)	0	0	0	0	0

KRd, carfilzomib, lenalidomide, and dexamethasone; Kd, carfilzomib and dexamethasone.

100.0%, and 100.0%, respectively. Twelve patients underwent planned auto-HSCT after KRd, and their ORR was 100% (sCR: 4 cases, VGPR: 5 cases and PR: 3 cases). In these patients, the median observation period of survivors was 20.5 (range, 5.0–33.5) months. Twelve-month PFS, 24-month PFS, 12-month OS, and 24-month OS were 82.5%, 82.5%, 100.0%, and 65.6%, respectively.

Efficacy and survival outcomes of Kd

In the Kd cohort, ORR was 62.0%, VGPR or better was 26.0%, and CR + sCR was 4.0% (Table 3). Relapse or PD was observed in 36 patients (72.0%), and 23 patients (46.0%) died during the observation period.

The median PFS was 7.1 months, and the 1-year PFS rate was 28.8% (Figure 3). Univariate analysis showed significantly shorter PFS in ISS III (1 year PFS: ISS I/II, 37.7%; ISS III, 7.7%; $p=0.007$; Table 5, Supplement Figure 3). Multivariate analysis showed significantly shorter PFS in ISS III (ISS I + II *vs* ISS III: HR 3.16, 95% CI: 1.21–8.26, $p=0.019$) and reduction in the dose of carfilzomib to less than 60% (100% *vs* <60%: HR, 2.89, 95% CI: 1.25–6.70, $p=0.013$; Table 5).

The median OS was 20.9 months, and the 1-year OS rate was 70.9% (Figure 1). Univariate analysis revealed significantly shorter OS in ISS III (1-year OS: ISS I/II, 37.7%; ISS III, 7.7%; $p=0.002$; Table 5, Supplement Figure 3). Refractoriness to bortezomib and a reduction in the dose of carfilzomib to less than 60% did not significantly affect PFS or OS in a univariate analysis (Figure 4). None of the factors examined significantly shortened OS in a multivariate analysis (Table 5).

Discussion

Based on the results of the phase III ASPIRE and ENDEAVOR trials, KRd and Kd therapies have been approved and performed in Japan. Clinical experience at the KMF member hematological facilities has been accumulated, and we collected medical information including actual drug dosages, number of administrations, and the details of AEs. In this study, we evaluated the effectiveness and safety of KRd and Kd by conducting an

Table 3. Response rates.

	KRd	Kd
Best response, <i>n</i> (%)	<i>n</i> = 107	<i>n</i> = 50
sCR	13 (12.2%)	1 (2.0%)
CR	3 (2.8%)	1 (2.0%)
VGPR	21 (19.6%)	11 (22.0%)
PR	36 (33.6%)	18 (36.0%)
SD	28 (26.2%)	15 (30.0%)
PD	6 (5.6%)	4 (8.0%)
ORR (sCR + CR + VGPR + PR), <i>n</i> (%)	73 (68.2%)	31 (62.0%)
VGPR or better	37 (34.6%)	13 (26.0%)
Median no. of cycles (range)	3 (1–19)	4 (1–36)
Refractory to Bortezomib		
NO (\geq SD, or naive), <i>n</i> (%)	<i>n</i> = 49	<i>n</i> = 23
ORR	41 (83.7%)	15 (65.2%)
VGPR or better	24 (49.0%)	7 (30.4%)
YES (PD), <i>n</i> (%)	<i>n</i> = 58	<i>n</i> = 27
ORR	32 (55.2%)	16 (59.3%)
VGPR or better	13 (22.4%)	6 (22.2%)
Refractory to lenalidomide		
NO (\geq SD, or naive), <i>n</i> (%)	<i>n</i> = 46	<i>n</i> = 15
ORR	37 (80.4%)	10 (66.7%)
VGPR or better	25 (54.3%)	6 (40.0%)
YES (PD), <i>n</i> (%)	<i>n</i> = 61	<i>n</i> = 35
ORR	36 (59.0%)	21 (60.0%)
VGPR or better	12 (19.7%)	7 (20.0%)

CR, complete response; Kd, carfilzomib and dexamethasone; KRd, carfilzomib, lenalidomide, and dexamethasone; ORR, overall response rate; PD, progressive disease; PR, partial response; sCR, stringent complete response; SD, stable disease; VGPR, very good partial response.

analysis that focused on real-world data and compared our findings with past reports.

With regard to KRd patients, KRd showed a relatively good therapeutic effect in the population,

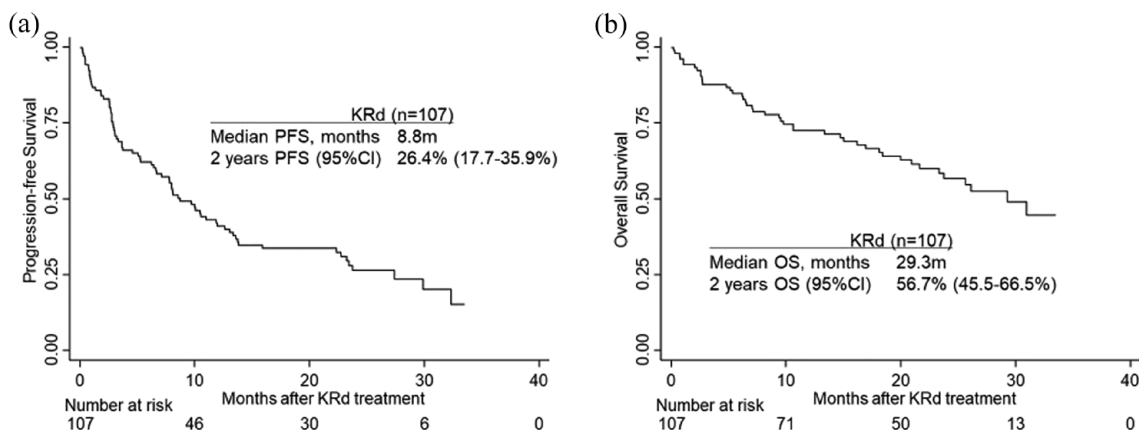


Figure 1. Kaplan-Meier curves of progression-free survival (PFS) (a) and overall survival (OS) (b) of 107 patients treated with carfilzomib-lenalidomide-dexamethasone (KRd).

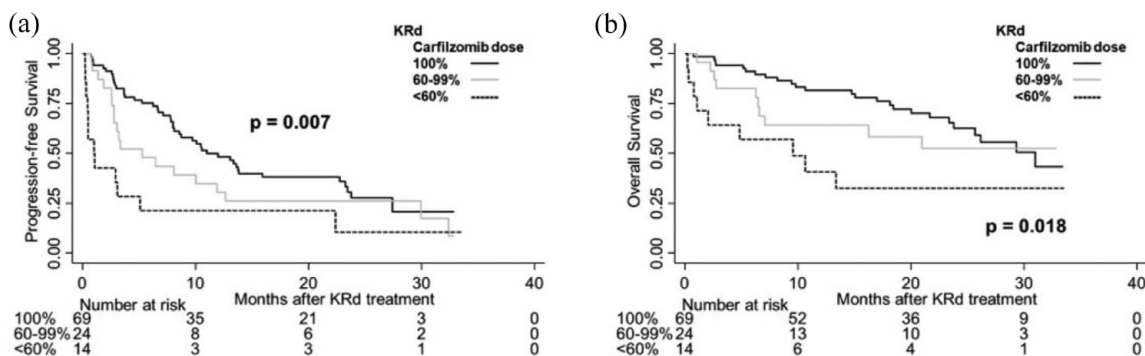


Figure 2. Kaplan-Meier curves of PFS (a) and OS (b) of patients treated with KRd based on the dosage of carfilzomib (100% vs. 60-99% vs. <60%).

including in patients who were refractory to several treatment regimens. Almost all cases had a history of bortezomib treatment and 54.2% of them were refractory. Univariate and multivariate analysis showed that bortezomib-resistant cases had worse ORR than non-resistant cases, and OS and PFS tended to be poor. The results suggested cross-resistance between bortezomib and carfilzomib. The carfilzomib doses in the first three courses were associated with OS and PFS, and dose reduction to 60% or less was identified as a poor prognosis factor. In cases of planned auto-HSCT after KRd or KRd as a consolidation therapy after auto-HSCT, median PFS and median OS were not reached. Both bridging KRd and consolidation KRd for auto-HSCT were considered useful. Several studies have reported that carfilzomib frequently had AEs in the elderly.²³⁻³⁰ In this study, there was no significant correlation

between the incidence of grade ≥ 3 AEs and age, partly due to the small sample size. The doses of carfilzomib and lenalidomide tended to be reduced in elderly patients. It would be desirable to evaluate cardiac function in advance, and to carefully observe the appearance of blood pressure change, signs of heart failure, and cytopenia even after the start of carfilzomib treatment. A patient who died of heart failure had a history of Sjogren's syndrome and a patient who died of arrhythmia had a history of bronchial asthma, which might have affected the onset of fatal AEs.

To compare the real-world data set with a clinical trial, we selected patients who had received one to three pretreatment lines, had Eastern Cooperative Oncology Group performance status (ECOG PS) 2 or better, and maintained SD or better reactivity for pretreatment lenalidomide and bortezomib

Table 4. KRd: Univariate and multivariate analysis of progression-free survival (PFS) and overall survival (OS).

Variables	PFS				OS			
	Univariate analysis		Multivariate analysis		Univariate analysis		Multivariate analysis	
	HR (95% CI)	<i>p</i>	HR (95% CI)	<i>p</i>	HR (95% CI)	<i>p</i>	HR (95% CI)	<i>p</i>
Sex								
Male	1 (reference)				1 (reference)			
Female	1.08 (0.69–1.70)	0.725			1.31 (0.72–2.38)	0.378		
PS								
0–1	1 (reference)				1 (reference)			
2–4	1.21 (0.71–2.06)	0.488			1.68 (0.88–3.23)	0.118		
Age								
<65	1 (reference)				1 (reference)			
65–75	1.55 (0.94–2.56)	0.084	1.47 (0.84–2.60)	0.179	1.19 (0.62–2.28)	0.595		
75<	2.20 (1.11–4.36)	0.024	1.91 (0.82–4.47)	0.135	1.80 (0.74–4.34)	0.194		
ISS								
I or II	1 (reference)				1 (reference)			
III	1.53 (0.88–2.64)	0.128			1.91 (0.97–3.74)	0.060	1.97 (0.91–4.23)	0.084
Poor chromosomal risk								
–	1 (reference)				1 (reference)			
+	1.49 (0.86–2.59)	0.159			1.26 (0.62–2.58)	0.527		
Not inspected	1.40 (0.81–2.43)	0.229			1.30 (0.63–2.70)	0.476		
M protein								
IgG	1 (reference)				1 (reference)			
non-IgG	2.36 (1.48–3.77)	<0.001	2.48 (1.42–4.33)	0.001	2.12 (1.15–3.88)	0.015	1.36 (0.67–2.78)	0.396
BJP								
–	1 (reference)				1 (reference)			
+	1.23 (0.70–2.16)	0.468			1.11 (0.54–2.31)	0.773		
NA	0.99 (0.49–1.97)	0.971			0.98 (0.39–2.49)	0.971		
Line no.								
1–2	1 (reference)				1 (reference)			
3<	1.92 (1.15–3.22)	0.012	1.95 (0.92–4.12)	0.081	2.71 (1.26–5.84)	0.011	2.15 (0.76–6.06)	0.148

(Continued)

Table 4. (Continued)

Variables	PFS				OS			
	Univariate analysis		Multivariate analysis		Univariate analysis		Multivariate analysis	
	HR (95% CI)	<i>p</i>	HR (95% CI)	<i>p</i>	HR (95% CI)	<i>p</i>	HR (95% CI)	<i>p</i>
From first_tx								
<2 years	1 (reference)				1 (reference)			
2 years<	1.77 (1.08–2.90)	0.024	0.99 (0.50–1.96)	0.970	2.20 (1.09–4.45)	0.029	1.61 (0.58–4.42)	0.357
Prior bortezomib								
SD or better	1 (reference)				1 (reference)			
PD	2.71 (1.67–4.40)	<0.001	1.64 (0.93–2.88)	0.087	2.42 (1.26–4.62)	0.008	2.33 (1.01–5.37)	0.047
Prior lenalidomide								
SD or better	1 (reference)				1 (reference)			
PD	2.45 (1.50–3.98)	<0.001	1.34 (0.73–2.44)	0.344	2.67 (1.35–5.29)	0.005	1.25 (0.56–2.78)	0.589
Carfilzomib dose								
100%	1 (reference)				1 (reference)			
60–99%	1.46 (0.85–2.51)	0.171	1.64 (0.84–3.19)	0.148	1.36 (0.65–2.84)	0.407	2.11 (0.89–5.03)	0.091
<60%	2.66 (1.40–5.06)	0.003	3.05 (1.40–6.62)	0.005	2.89 (1.35–6.20)	0.007	3.66 (1.47–9.10)	0.005
Lenalidomide dose								
100%	1 (reference)				1 (reference)			
60–99%	0.99 (0.44–2.21)	0.972	0.65 (0.27–1.52)	0.318	0.61 (0.21–1.77)	0.364		
<60%	2.23 (1.16–4.28)	0.016	1.03 (0.49–2.15)	0.940	1.47 (0.67–3.21)	0.332		

BJP, Bence-Jones protein; ISS, International Staging System; Kd, carfilzomib and dexamethasone; KRd, carfilzomib, lenalidomide, and dexamethasone; PD, progressive disease; PS, performance status.

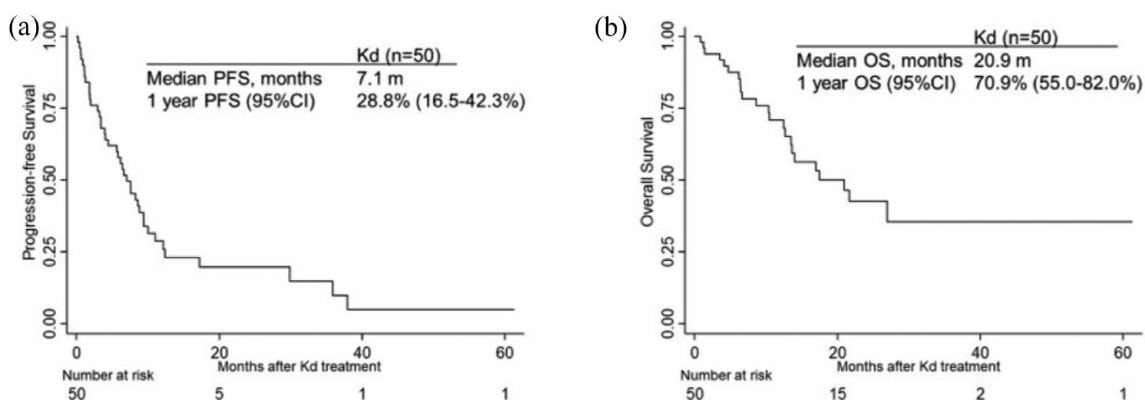


Figure 3. Kaplan-Meier curves of PFS (a) and OS (b) of 50 patients treated with carfilzomib-dexamethasone (Kd).

Table 5. Kd: Univariate and multivariate analysis of progression-free survival (PFS) and overall survival (OS).

Variables	PFS				OS			
	Univariate analysis		Multivariate analysis		Univariate analysis		Multivariate analysis	
	HR (95% CI)	<i>p</i>	HR (95% CI)	<i>p</i>	HR (95% CI)	<i>p</i>	HR (95% CI)	<i>p</i>
Sex								
Male	1 (reference)				1 (reference)			
Female	0.83 (0.45–1.56)	0.571			0.91 (0.40–2.08)	0.823		
PS								
0–1	1 (reference)				1 (reference)			
2–4	1.00 (0.41–2.43)	0.999			1.36 (0.46–4.01)	0.580		
Age								
<65	1 (reference)				1 (reference)			
65–75	1.29 (0.57–2.89)	0.541			1.34 (0.45–4.00)	0.603	1.12 (0.34–3.68)	0.846
75<	1.64 (0.73–3.63)	0.224			2.38 (0.86–6.57)	0.095	1.93 (0.64–5.83)	0.245
ISS								
I or II	1 (reference)				1 (reference)			
III	2.55 (1.27–5.14)	0.009	3.16 (1.21–8.26)	0.019	3.71 (1.55–8.89)	0.003	3.25 (0.89–11.81)	0.074
Poor chromosomal risk								
–	1 (reference)				1 (reference)			
+	1.59 (0.75–3.39)	0.229	1.83 (0.82–4.10)	0.140	0.92 (0.32–2.71)	0.887	1.00 (0.32–3.11)	0.994
Not inspected	2.06 (0.93–4.60)	0.076	1.34 (0.48–3.79)	0.578	2.39 (0.93–6.13)	0.070	1.10 (0.29–4.19)	0.892
M protein								
IgG	1 (reference)				1 (reference)			
Non-IgG	1.33 (0.70–2.56)	0.386			1.78 (0.78–4.08)	0.174		
BJP								
–	1 (reference)				1 (reference)			
+	1.39 (0.71–2.75)	0.337			2.49 (0.98–6.32)	0.055	1.31 (0.45–3.77)	0.621
NA	0.86 (0.28–2.63)	0.796			1.82 (0.47–7.06)	0.384	2.16 (0.49–9.47)	0.305
From first_tx								
<2 years	1 (reference)				1 (reference)			
2 years<	0.71 (0.37–1.36)	0.298			0.62 (0.25–1.53)	0.299		
Line no.								

(Continued)

Table 5. (Continued)

Variables	PFS				OS			
	Univariate analysis		Multivariate analysis		Univariate analysis		Multivariate analysis	
	HR (95% CI)	p	HR (95% CI)	p	HR (95% CI)	p	HR (95% CI)	p
1–2	1 (reference)				1 (reference)			
3<	0.90 (0.41–1.98)	0.793			0.65 (0.24–1.78)	0.407		
Prior bortezomib								
SD<	1 (reference)				1 (reference)			
PD	1.67 (0.87–3.22)	0.126			1.40 (0.60–3.24)	0.438		
Carfilzomib dose								
100%	1 (reference)				1 (reference)			
60–99%	1.32 (0.56–3.11)	0.533	1.85 (0.74–4.60)	0.186	0.59 (0.17–1.99)	0.396		
<60%	1.89 (0.90–3.99)	0.093	2.89 (1.25–6.70)	0.013	1.26 (0.49–3.20)	0.632		

BJP, Bence-Jones protein; ISS, International Staging System; Kd, carfilzomib and dexamethasone; KRd, carfilzomib, lenalidomide, and dexamethasone; PD, progressive disease; PS, performance status.

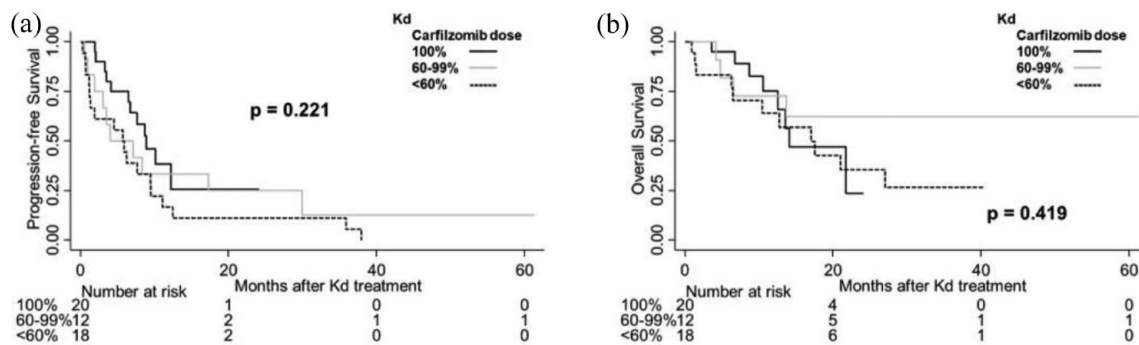


Figure 4. Kaplan-Meier curves of PFS (a) and OS (b) of patients treated with Kd based on the dosage of carfilzomib (100% vs. 60-99% vs. <60%).

($n = 19$), according to the ASPIRE study ($n = 396$); ORR (this study *vs* ASPIRE = 89.5 *vs* 87.1%), median PFS (NR *vs* 26.3 months), and median OS (NR *vs* 48.3 months) in this study were not inferior to those in the ASPIRE trial. Furthermore, the side effect profile of cardiovascular events, cytopenia, and infection was similar.

In Kd patients, the bortezomib sensitivity of the previous treatment did not significantly affect Kd efficacy. In cases of ISS III, PFS and OS were significantly inferior, and in cases in which the dose of carfilzomib was reduced to less than

60%, OS was poor. There were nine cases of once-weekly carfilzomib administration, and the ORR was not inferior to that of twice-weekly cases (once a week *vs* twice a week = 77.8% *vs* 58.5%). Once a week cases tended to receive long-term administration of eight courses or more (once a week *vs* twice a week = 55.6% *vs* 24.4%). It is probable that the burden of commuting to the hospital for patients was reduced, and this helped them to continue Kd. Once-weekly carfilzomib 70 mg/two administration is synonymous with carfilzomib dose reduction to 62.5% compared to twice-weekly administration. However,

because carfilzomib has been demonstrated to inhibit the proteasome dose dependently, the increase in proteasome inhibition associated with increasing carfilzomib 70 mg/two doses in 1 day may partly account for the improved clinical response.³¹ The incidences of cardiovascular AEs (once a week *vs* twice a week = 11.1% *vs* 7.3%) and non-cardiovascular AEs (once a week *vs* twice a week = 44.4% *vs* 56.1%) were not significantly different. Once-a-week, Kd was considered to be a promising and safe option. As in previous reports, AEs were mainly cardiovascular side effects, cytopenia, and infection; however, there was no significant correlation between AEs and age of patients.^{16,32,33} No serious AE leading to death was observed.

To compare the real-world data set with a clinical trial, we selected patients who had received one to three lines of pretreatment, had ECOG PS 2 or better and were proteasome inhibitor-free for 6 months until the start of Kd ($n=12$), according to the ENDEAVOR study ($n=464$); ORR (this study *vs* ENDEAVOR = 66.7 *vs* 76.7%), median PFS (11.1 *vs* 18.7 months), and median OS (27.0 *vs* 47.6 months) in this study were inferior to those in the ENDEAVOR study. It is considered that this was because the ENDEAVOR study excluded patients with cytopenia, heart failure, and renal dysfunction at the start of Kd.

This study has several limitations. First, although chromosomal abnormalities have been reported to be an important factor that affects the prognosis of MM, all chromosomal abnormalities were not necessarily evaluated by FISH or G-BAND before the start of KRd or Kd in all patients in this study. In most of the cases, only one or two genetic abnormalities had been investigated by FISH at the diagnosis, and all risk factors had not been examined. Second, Kd was approved later than KRd (KRd: July 2016, Kd: May 2017), and the shorter observation period in the Kd group might have affected the evaluation of treatment outcomes. In recent years, other combinations of carfilzomib such as daratumumab, isatuximab, and pomalidomide are available and are expected to show their efficacy and safety.

In conclusion, although this study tended to have a higher median age, more high-risk cases, more prior lines of therapy, and more cases of resistance to bortezomib and lenalidomide compared to other real-world reports (Supplement Tables 3

and 4), an equivalent therapeutic effect has been obtained, which suggested that KRd and Kd therapies are also effective in Japanese patients. It is desirable to avoid reducing the dose of carfilzomib as much as possible. Cytopenia, infections, and cardiovascular AEs were observed, and there were cases of death due to the AEs; therefore, careful attention should be paid with regard to the AEs.

Ethics approval and consent to participate

This study was conducted in accordance with the Declaration of Helsinki, with the approval of the ethics committees of the KMF and each participating institution. Ethics/Review board approval: Kyoto University Certified Review Board, Yoshida-Konoe-cho, Sakyo-ku, Kyoto 606-8501, JAPAN, CRB5180002(R1856), March 19th, 2019. We have followed the guideline of the Strengthening the Reporting of Observational Studies in Epidemiology (STROBE) Statement. The checklist from the guideline is in Supplementary material. The informed consent requirement for this retrospective study was waived because the study was conducted retrospectively and the opportunity to refuse was guaranteed.

Consent for publication

Not applicable.

Author contribution(s)

Yoshiyuki Onda: Conceptualization; Data curation; Formal analysis; Funding acquisition; Investigation; Writing – original draft.

Junya Kanda: Conceptualization; Data curation; Formal analysis; Funding acquisition; Investigation; Project administration; Supervision; Writing – original draft; Writing – review & editing.

Hitomi Kaneko: Data curation; Investigation.

Yuji Shimura: Data curation; Investigation.

Shin-ichi Fuchida: Data curation; Investigation.

Aya Nakaya: Data curation; Investigation.

Tomoki Itou: Data curation; Investigation.

Ryosuke Yamamura: Data curation; Investigation.

Hirokazu Tanaka: Data curation; Investigation.

Hirohiko Shibayama: Conceptualization; Data curation; Funding acquisition; Investigation; Project administration; Supervision.

Yutaka Shimazu: Data curation; Investigation.

Hitoji Uchiyama: Data curation; Investigation.

Satoshi Yoshihara: Data curation; Investigation.

Yoko Adachi: Data curation; Investigation.

Mitsuhiro Matsuda: Data curation; Investigation.

Hitoshi Hanamoto: Data curation; Investigation.

Nobuhiko Uoshima: Data curation; Investigation.

Satoru Kosugi: Data curation; Investigation.

Kensuke Ohta: Data curation; Investigation.

Hideo Yagi: Data curation; Investigation.

Yuzuru Kanakura: Project administration; Supervision.

Itaru Matsumura: Project administration; Supervision.

Masayuki Hino: Project administration; Supervision.

Shosaku Nomura: Project administration; Supervision.

Chihiro Shimazaki: Project administration; Supervision.

Akifumi Takaori-Kondo: Project administration; Supervision.

Junya Kuroda: Project administration; Supervision.

ORCID iDs

Yoshiyuki Onda  <https://orcid.org/0000-0003-3093-4974>

Junya Kanda  <https://orcid.org/0000-0002-6704-3633>

Yutaka Shimazu  <https://orcid.org/0000-0002-1604-7220>

Acknowledgements

The authors are thankful to all the patients, their families, Ritsuko Okuyama, and KMF members who contributed to this study.

Funding

The authors disclosed receipt of the following financial support for the research, authorship,

and/or publication of this article: This study was funded by Ono Pharmaceutical Co., Ltd.

Conflict of interest statement

The authors declared the following potential conflicts of interest with respect to the research, authorship, and/or publication of this article: All authors received research funding from Ono Pharma. and Celgene (Current Bristol Myers Squibb). JKa, SF, TI, HT, HS, SY, KS, KO, MH, CS, and JKu received speaker's bureau from Ono Pharma. JKa, SF, TI, HT, HS, SY, SK, KO, IM, MH, CS, AT-K, and JKu received speaker's bureau from Celgene (Current Bristol Myers Squibb). SF, TI, TH, HS, SY, SK, KO, IM, MH, CS, and JKu received speaker's bureau from Janssen. JKa, SF, TI, HT, HS, SY, SK, KO, IM, MH, CS, and JKu received speaker's bureau from Takeda Pharma. JKa, SF, TI, HT, HS, SY, SK, MH, CS, and JKu received speaker's bureau from Sanofi. JKa, TI, HT, HS, SY, SK, KO, IM, MH, AT-K, and JKu received speaker's bureau from Novartis. SK and JKu received speaker's bureau from Fujimoto Pharma. TI, HS, MH, and JKu received research funding from Celgene (Current Bristol Myers Squibb). HS received research funding from Janssen. IM and JKu received research funding from Takeda Pharma. HS, IM, and JKu received research funding from Sanofi. HS and MH received research funding from Novartis. JKu received research funding from Fujimoto Pharma. JKa received consulting fees from Janssen and Takeda Pharma. MH received scholarship donations from Takeda Pharma. and Ono Pharma. AT-K received scholarship donations from Takeda Pharma. and Sanofi.

Availability of data and materials

All data used in the analysis was anonymized, making it impossible for researchers to identify individuals.

Supplemental material

Supplemental material for this article is available online.

References

1. Agarwal A, Chow E, Bhutani M, *et al.* Practical considerations in managing relapsed multiple myeloma. *Clin Lymphoma Myeloma Leuk* 2017; 17: 69–77.

2. Anderson KC. Progress and paradigms in multiple myeloma. *Clin Cancer Res* 2016; 22: 5419–5427.
3. Jagannath S, Abonour R, Durie BGM, *et al.* Heterogeneity of second-line treatment for patients with multiple myeloma in the connect MM registry (2010–2016). *Clin Lymphoma Myeloma Leuk* 2018; 18: 480–485.
4. Kumar SK, Dispenzieri A, Lacy MQ, *et al.* Continued improvement in survival in multiple myeloma: changes in early mortality and outcomes in older patients. *Leukemia* 2014; 28: 1122–1128.
5. Kumar SK, Rajkumar SV, Dispenzieri A, *et al.* Improved survival in multiple myeloma and the impact of novel therapies. *Blood* 2008; 111: 2516–2520.
6. Palumbo A and Anderson K. Multiple myeloma. *N Engl J Med* 2011; 364: 1046–1060.
7. Dimopoulos MA, Oriol A, Nahi H, *et al.* Daratumumab, lenalidomide, and dexamethasone for multiple myeloma. *N Engl J Med* 2016; 375: 1319–1331.
8. Lonial S, Dimopoulos M, Palumbo A, *et al.* Elotuzumab therapy for relapsed or refractory multiple myeloma. *N Engl J Med* 2015; 373: 621–631.
9. Palumbo A, Chanan-Khan A, Weisel K, *et al.* Daratumumab, bortezomib, and dexamethasone for multiple myeloma. *N Engl J Med* 2016; 375: 754–766.
10. Steiner RE and Manasanch EE. Carfilzomib boosted combination therapy for relapsed multiple myeloma. *Onco Targets Ther* 2017; 10: 895–907.
11. Alsina M, Trudel S, Furman RR, *et al.* A phase I single-agent study of twice-weekly consecutive-day dosing of the proteasome inhibitor carfilzomib in patients with relapsed or refractory multiple myeloma or lymphoma. *Clin Cancer Res* 2012; 18: 4830–4840.
12. Jagannath S, Vij R, Stewart AK, *et al.* An open-label single-arm pilot phase II study (PX-171-003-A0) of low-dose, single-agent carfilzomib in patients with relapsed and refractory multiple myeloma. *Clin Lymphoma Myeloma Leuk* 2012; 12: 310–318.
13. Siegel DS, Martin T, Wang M, *et al.* A phase 2 study of single-agent carfilzomib (PX-171-003-A1) in patients with relapsed and refractory multiple myeloma. *Blood* 2012; 120: 2817–2825.
14. Vij R, Siegel DS, Jagannath S, *et al.* An open-label, single-arm, phase 2 study of single-agent carfilzomib in patients with relapsed and/or refractory multiple myeloma who have been previously treated with bortezomib. *Br J Haematol* 2012; 158: 739–748.
15. Vij R, Wang M, Kaufman JL, *et al.* An open-label, single-arm, phase 2 (PX-171-004) study of single-agent carfilzomib in bortezomib-naive patients with relapsed and/or refractory multiple myeloma. *Blood* 2012; 119: 5661–5670.
16. Dimopoulos MA, Moreau P, Palumbo A, *et al.* Carfilzomib and dexamethasone versus bortezomib and dexamethasone for patients with relapsed or refractory multiple myeloma (ENDEAVOR): a randomised, phase 3, open-label, multicentre study. *Lancet Oncol* 2016; 17: 27–38.
17. Orlowski RZ, Moreau P, Niesvizky R, *et al.* Carfilzomib-dexamethasone versus bortezomib-dexamethasone in relapsed or refractory multiple myeloma: updated overall survival, safety, and subgroups. *Clin Lymphoma Myeloma Leuk* 2019; 19: 522–530.
18. Siegel DS, Dimopoulos MA, Ludwig H, *et al.* Improvement in overall survival with carfilzomib, lenalidomide, and dexamethasone in patients with relapsed or refractory multiple myeloma. *J Clin Oncol* 2018; 36: 728–734.
19. Stewart AK, Rajkumar SV, Dimopoulos MA, *et al.* Carfilzomib, lenalidomide, and dexamethasone for relapsed multiple myeloma. *N Engl J Med* 2015; 372: 142–152.
20. Rajkumar SV, Harousseau J-L, Durie B, *et al.* Consensus recommendations for the uniform reporting of clinical trials: report of the International Myeloma Workshop Consensus Panel 1. *Blood* 2011; 117: 4691–4695.
21. Durie BG, Harousseau JL, Miguel JS, *et al.* International uniform response criteria for multiple myeloma. *Leukemia* 2006; 20: 1467–1473.
22. Kumar S, Paiva B, Anderson KC, *et al.* International Myeloma Working Group consensus criteria for response and minimal residual disease assessment in multiple myeloma. *Lancet Oncol* 2016; 17: e328–e346.
23. Hoy SM. Carfilzomib triple combination therapy: a review in relapsed multiple myeloma. *Target Oncol* 2016; 11: 255–262.
24. Dimopoulos MA, Roussou M, Gavriatopoulou M, *et al.* Cardiac and renal complications of carfilzomib in patients with multiple myeloma. *Blood Adv* 2017; 1: 449–454.

25. Bringhen S, Milan A, Ferri C, *et al.* Cardiovascular adverse events in modern myeloma therapy – incidence and risks. A review from the European Myeloma Network (EMN) and Italian Society of Arterial Hypertension (SIIA). *Haematologica* 2018; 103: 1422–1432.
26. Chari A, Stewart AK, Russell SD, *et al.* Analysis of carfilzomib cardiovascular safety profile across relapsed and/or refractory multiple myeloma clinical trials. *Blood Adv* 2018; 2: 1633–1644.
27. Waxman AJ, Clasen S, Hwang W-T, *et al.* Carfilzomib-associated cardiovascular adverse events: a systematic review and meta-analysis. *JAMA Oncol* 2018; 4: e174519.
28. Bringhen S, Milan A, D’Agostino M, *et al.* Prevention, monitoring and treatment of cardiovascular adverse events in myeloma patients receiving carfilzomib A consensus paper by the European Myeloma Network and the Italian Society of Arterial Hypertension. *J Intern Med* 2019; 286: 63–74.
29. Bruno G, Bringhen S, Maffei I, *et al.* Cardiovascular organ damage and blood pressure levels predict adverse events in multiple myeloma patients undergoing carfilzomib therapy. *Cancers (Basel)* 2019; 11: 622.
30. Mele A, Prete E, De Risi C, *et al.* Carfilzomib, lenalidomide, and dexamethasone in relapsed/refractory multiple myeloma patients: the real-life experience of Rete Ematologica Pugliese (REP). *Ann Hematol* 2021; 100: 429–436.
31. Papadopoulos KP, Siegel DS, Vesole DH, *et al.* Phase I study of 30-minute infusion of carfilzomib as single agent or in combination with low-dose dexamethasone in patients with relapsed and/or refractory multiple myeloma. *J Clin Oncol* 2015; 33: 732–739.
32. Ailawadhi S, Sexton R, Lentzsch S, *et al.* Low-dose versus high-dose carfilzomib with dexamethasone (S1304) in patients with relapsed-refractory multiple myeloma. *Clin Cancer Res* 2020; 26: 3969–3978.
33. Du J, Fang B, Li J, *et al.* A study of carfilzomib and dexamethasone in patients with relapsed and refractory multiple myeloma in China. *Int J Hematol* 2021; 113: 422–429.

Visit SAGE journals online
[journals.sagepub.com/
home/tah](https://journals.sagepub.com/home/tah)

 SAGE journals