

## Original Paper

# Electronic Health Record–Nested Reminders for Serum Lithium Level Monitoring in Patients With Mood Disorder: Randomized Controlled Trial

Tomotsugu Seki<sup>1,2\*</sup>, MD, MPH; Morio Aki<sup>3,4\*</sup>, MD; Toshi A Furukawa<sup>5</sup>, MD, PhD; Hirotsugu Kawashima<sup>3,4</sup>, MD; Tomotaka Miki<sup>3,4</sup>, MD; Yujin Sawaki<sup>3,4,6</sup>, MD; Takaaki Ando<sup>3,4</sup>, MD; Kentaro Katsuragi<sup>3,4</sup>, MD; Takahiko Kawashima<sup>3,4</sup>, MD; Senkei Ueno<sup>3,4</sup>, MD; Takashi Miyagi<sup>3,4,7</sup>, MD; Shun'ichi Noma<sup>3,4,8</sup>, MD; Shiro Tanaka<sup>9</sup>, PhD; Koji Kawakami<sup>1</sup>, MD, PhD

<sup>1</sup>Department of Pharmacoepidemiology, School of Public Health, Graduate School of Medicine, Kyoto University, Kyoto, Japan

<sup>2</sup>Department of Cardiovascular Medicine, Graduate School of Medical Science, Kyoto Prefectural University of Medicine, Kyoto, Japan

<sup>3</sup>Department of Psychiatry, Toyooka Hospital, Toyooka, Japan

<sup>4</sup>Department of Psychiatry, Kyoto University Hospital, Kyoto, Japan

<sup>5</sup>Department of Health Promotion and Human Behavior, School of Public Health, Graduate School of Medicine, Kyoto University, Kyoto, Japan

<sup>6</sup>National Epilepsy Center, National Hospital Organization Shizuoka Institute of Epilepsy and Neurological Disorders, Shizuoka, Japan

<sup>7</sup>Department of Psychiatry, Kyoto-Katsura Hospital, Kyoto, Japan

<sup>8</sup>Noma-Kokoro Clinic, Kyoto, Japan

<sup>9</sup>Department of Clinical Biostatistics, Graduate School of Medicine, Kyoto University, Kyoto, Japan

\*these authors contributed equally

**Corresponding Author:**

Toshi A Furukawa, MD, PhD

Department of Health Promotion and Human Behavior

School of Public Health, Graduate School of Medicine

Kyoto University

Yoshida Konoe-cho

Sakyo-ku

Kyoto, 606-8501

Japan

Phone: 81 75 753 9491

Email: [furukawa@kuhp.kyoto-u.ac.jp](mailto:furukawa@kuhp.kyoto-u.ac.jp)

## Abstract

**Background:** Clinical guidelines recommend regular serum lithium monitoring every 3 to 6 months. However, in the real world, only a minority of patients receive adequate monitoring.

**Objective:** This study aims to examine whether the use of the electronic health record (EHR)–nested reminder system for serum lithium monitoring can help achieve serum lithium concentrations within the therapeutic range for patients on lithium maintenance therapy.

**Methods:** We conducted an unblinded, single-center, EHR-nested, parallel-group, superiority randomized controlled trial comparing EHR-nested reminders with usual care in adult patients receiving lithium maintenance therapy for mood disorders. The primary outcome was the achievement of therapeutically appropriate serum lithium levels between 0.4 and 1.0 mEq/L at 18 months after enrollment. The key secondary outcomes are included as follows: the number of serum lithium level monitoring except for the first and final monitoring; exacerbation of the mood disorder during the study period, defined by hospitalization, increase in lithium dose, addition of antipsychotic drugs or mood stabilizers, or addition or increase of antidepressants; adherence defined by the proportion of days covered by lithium carbonate prescription during the study period.

**Results:** A total of 111 patients were enrolled in this study. A total of 56 patients were assigned to the reminder group, and 55 patients were assigned to the usual care group. At the follow-up, 38 (69.1%) patients in the reminder group and 33 (60.0%) patients in the usual care group achieved the primary outcome (odds ratio 2.14, 95% CI 0.82-5.58,  $P=.12$ ). The median number

of serum lithium monitoring was 2 in the reminder group and 0 in the usual care group (rate ratio 3.62; 95% CI 2.47-5.29,  $P < .001$ ). The exacerbation of mood disorders occurred in 17 (31.5%) patients in the reminder group and in 16 (34.8%) patients in the usual care group (odds ratio 0.97, 95% CI 0.42-2.28,  $P = .95$ ).

**Conclusions:** We found insufficient evidence for an EHR-nested reminder to increase the achievement of therapeutic serum lithium concentrations. However, the number of monitoring increased with relatively simple and inexpensive intervention. The EHR-based reminders may be useful to improve quality of care for patients on lithium maintenance therapy, and they have potentials to be applied to other problems.

**Trial Registration:** University Hospital Medical Information Network Clinical Trials Registry UMIN000033633; <https://tinyurl.com/5n7wtvav>

(*J Med Internet Res* 2023;25:e40595) doi: [10.2196/40595](https://doi.org/10.2196/40595)

## KEYWORDS

electronic health record; lithium; mood disorders; randomized controlled trial; quality of health care

## Introduction

Lithium carbonate is the most effective mood stabilizer in patients with bipolar disorder. It prevents both manic and depressive episodes and is an augmenting agent for recurrent or treatment-resistant major depressive disorder [1-3]. Owing to its narrow therapeutic range and the risks of renal dysfunction and hypothyroidism, guidelines strongly recommend regular serum lithium monitoring every week in the acute phase and every 3 to 6 months during the subsequent maintenance phase [4-8]. However, in Japan, only 14.9% of patients received serum lithium monitoring once a year or more between 2005 and 2014, whereas 30% to 65% of patients received monitoring at least once every 3 months in Europe [9-11].

Previous studies have shown that quality improvement programs such as active monitoring and reminder systems increase the serum lithium monitoring rate [12,13]. Recently, electronic health record (EHR)-nested alerts have been shown to improve quality of care [14,15]. However, no study has tested EHR-nested alerts for lithium monitoring.

Therefore, we mounted the Kyoto-Toyooka nested controlled trial of reminders (KONOTORI) trial to examine whether the use of the EHR-nested reminder system for serum lithium monitoring can help achieve serum lithium concentrations within the therapeutic range for patients on lithium maintenance therapy.

## Methods

### Trial Design

The KONOTORI trial was an unblinded, single-center, EHR-nested, parallel-group, superiority randomized controlled trial (RCT). This trial was conducted at the Department of Psychiatry of Toyooka Hospital, a tertiary-care community hospital in Toyooka City, Hyogo, Japan. The details of the trial design have been previously published (University Hospital Medical Information Network Clinical Trials Registry: UMIN000033633) [16].

All procedures contributing to this work were compliant with the ethical standards of the relevant national and institutional committees on human experimentation and the Helsinki Declaration of 1975, as revised in 2008. The study protocol was

approved by the Ethics Committee of Kyoto University Graduate School of Medicine and the Institutional Review Board of Toyooka Hospital (C1401). All patients provided written informed consent prior to enrollment. This study followed the Consolidated Standards of Reporting Trials statement [17].

### Patient Selection and Randomization

Patients aged 18 years or older who were diagnosed with recurrent major depression, bipolar I disorder, or bipolar II disorder in accordance with the *Diagnostic and Statistical Manual of Mental Disorders*, 5th edition, and had been taking lithium carbonate for 6 months or longer were eligible for enrollment. The major exclusion criteria were as follows: prescribed lithium carbonate for reasons other than mood disorders, primary diagnosis of schizophrenia, suspected lithium intoxication, and contraindications to lithium carbonate. [Multimedia Appendix 1](#) presents the full eligibility criteria. Eligible patients were randomly assigned in a 1:1 ratio to either the EHR-nested reminder or the usual care group. Randomization was performed with the use of the EHR-nested trial program, which was stratified according to the diagnosis based on the Primary Care Evaluation of Mental Disorders for major depression, bipolar I disorder, or bipolar II disorder and the baseline serum lithium levels (between 0.4 mEq/L and 1.0 mEq/L, <0.4 mEq/L, or >1.0 mEq/L), using permuted block randomization. An independent trial statistician generated the random allocation sequence. Randomization was performed at the patient's first scheduled visit, 4 to 8 months after enrollment in the EHR system. Therefore, the allocation was concealed from the study personnel (psychiatrists and nurses) who enrolled patients.

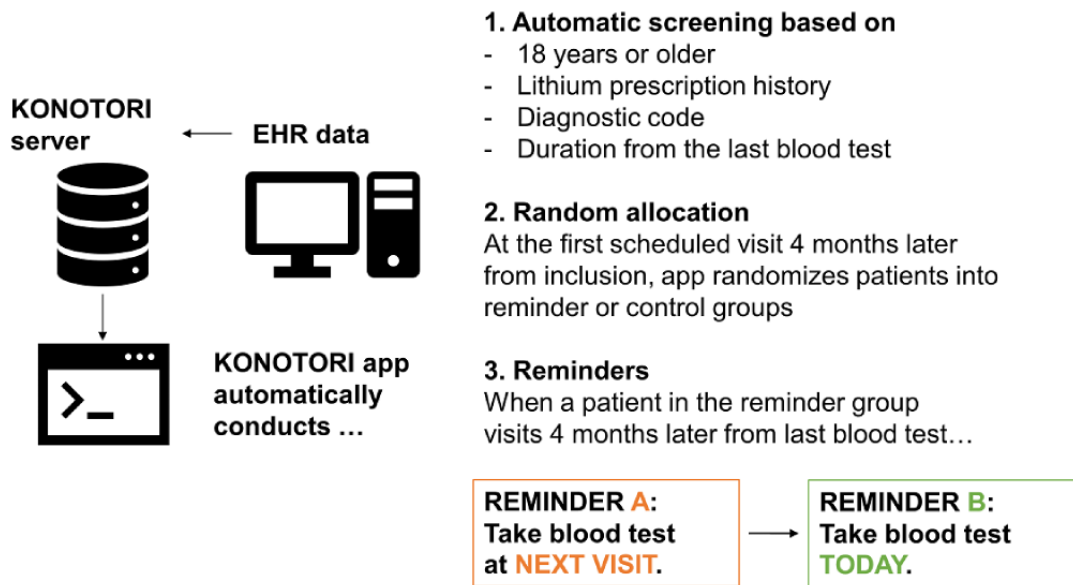
### Trial Procedures and Interventions

The trial program in the EHR system automatically prompted eligibility screening when potential candidates visited the hospital and also conducted the random allocation for the consenting patients at the prespecified timing above. When the patient was enrolled and allocated to the intervention arm, the trial program printed out reminders of serum lithium monitoring to the physician, as specified by the algorithm. When a patient in the reminder group visited 4 to 8 months after the last lithium monitoring or study registration, the first reminder was sent to the physician. This reminder included the following sentence: "Please notify the patient of the serum lithium monitoring at

the next visit.” When the patient visited within 8 months of the first reminder, the second reminder was sent. The second reminder included the following sentence: “Please notify the patient of the serum lithium monitoring today.” These 2-step

reminders were repeated up to 2 times. When patients were allocated to the usual care group, they received the usual care without reminders. No concurrent treatments were prohibited in this trial (Figure 1).

**Figure 1.** Illustration of KONOTORI system. EHR: electronic health record; KONOTORI: Kyoto-Toyooka nested controlled trial of reminders.



**Trial Outcomes**

The primary outcome was the achievement of therapeutic serum lithium levels >0.4 but <1.0 mEq/L at the follow-up visit 18 months after enrollment [7]. If the final serum lithium level was not available, the patient was regarded as not having achieved the primary outcome. The prespecified secondary outcomes were as follows: the number of serum lithium level monitoring except for the first and final monitoring; exacerbation of the mood disorder during the study period, defined by hospitalization, increase in lithium dose, addition of antipsychotic drugs or mood stabilizers, or addition or increase of antidepressants; and adherence, defined by the proportion of days covered (PPDC) of lithium carbonate prescription during the study period. The safety outcomes included the estimated glomerular filtration rate (eGFR) and thyrotropin (TSH) levels at the follow-up visit. Data on serious adverse events, including death, were compiled for safety assessment.

**Sample Size Calculation**

The baseline estimates were obtained from The Real World Data database (Health, Clinic, Education, Information Evaluation Institute/Real World Data, Co, Ltd), which includes approximately 19 million patients’ data from 170 institutions in Japan. According to this database, of 1464 patients who were prescribed lithium carbonate in a 6-month period up to June 1, 2018, therapeutic serum lithium levels (between 0.4 mEq/L and 1.0 mEq/L) were maintained in 818 (55.9%) patients. In this trial, we estimated that a total of 108 patients would provide 90% power if 48 (80%) patients in the reminder group and 33 (55%) patients in the usual care group achieved the primary outcome using the 2-sided chi-square test with a 2-side alpha

level of .05. Assuming a dropout rate of 10%, the final sample size was set at 120.

**Statistical Analysis**

All analyses were conducted in accordance with the intention-to-treat principle. We analyzed the primary outcome and exacerbation of mood disorders using logistic regression and reported the odds ratios (ORs) with *P* values and 95% CIs. The model included diagnosis and baseline serum lithium levels as covariates. We examined the number of serum lithium monitoring using Poisson regression, adjusted for the covariates listed above, and reported the rate ratios with their *P* values and 95% CIs. The PPDC of lithium carbonate prescription, eGFR, and TSH were analyzed using linear regression, adjusted with the same covariates, and reported with  $\beta$  coefficients, *P* values, and 95% CIs. In addition, as a post hoc analysis, the final serum lithium level was analyzed using linear regression as well. When the patient died or was lost to follow-up, the period between enrollment and the last visit was used as the denominator for the PPDC. To mitigate the potential bias caused by missing data, we conducted multiple imputation analyses under the assumption that the data were missing at random [18]. Multiple imputation was performed by creating 5 data sets using the fully conditional specification method and combining the effect estimates from each data set using the Rubin rule. All statistical tests were 2-sided, and *P* values <.05 were considered statistically significant. All analyses were conducted by academic researchers using SAS software, version 9.4 (SAS Institute).

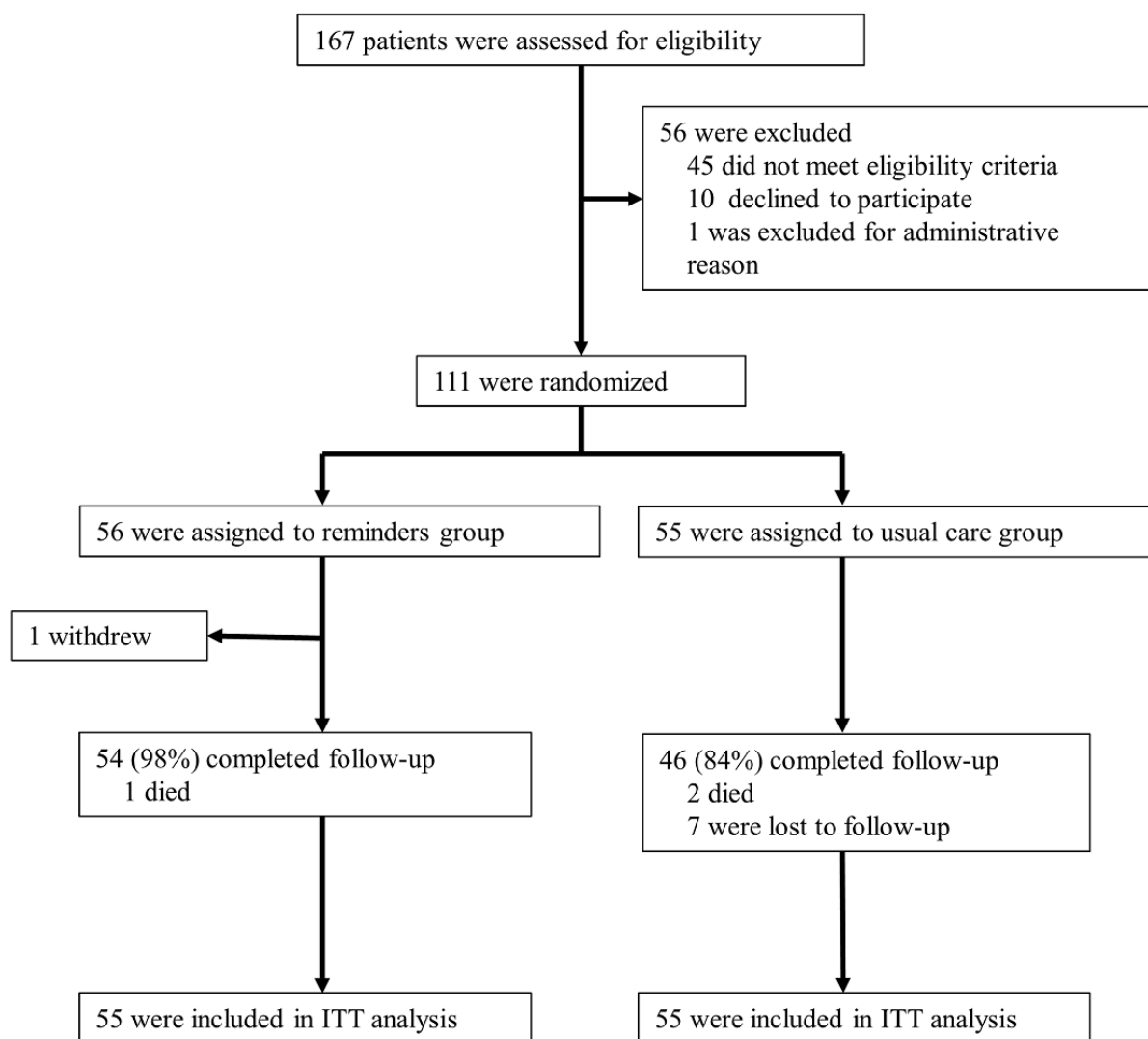
## Results

### Overview

Trial enrollment started on November 1, 2018, and ended on March 31, 2020. We continued the follow-up until September 10, 2021. Of 167 patients who underwent screening, 56 were excluded (Figure 2) and 111 underwent randomization. Of them, 56 patients were randomly assigned to receive EHR-nested reminders (reminder group), and 55 received usual care (usual

care group). One patient in the reminder group withdrew consent after randomization, and the remaining 110 patients were analyzed. The baseline characteristics were well balanced between the treatment groups (Table 1). A total of 48% of the patients had bipolar I disorder, 36% had bipolar II disorder, and 26% had recurrent major depression. The mean age of patients was 57 years, and 42.7% were men. The mean baseline lithium level was 0.61 mEq/L, and 73.6% of patients had lithium levels within the therapeutic range.

Figure 2. Study flow chart. ITT: intention to treat.



**Table 1.** Baseline characteristics of patients.

	Reminders group (N=55)	Usual care group (N=55)
Age (years), mean (SD)	58.2 (14.9)	55.7 (15.3)
Male sex, n (%)	24 (43.6)	23 (41.8)
<b>Diagnosis, n (%)</b>		
Bipolar I disorder	23 (41.8)	25 (45.5)
Bipolar II disorder	20 (36.4)	16 (29.1)
Recurrent major depression	12 (21.8)	14 (25.5)
Baseline lithium level (mEq/L)	0.62 (0.26)	0.60 (0.23)
<b>Baseline lithium level category, n (%)</b>		
Normal (0.4-1.0 mEq/L)	39 (70.9)	42 (76.4)
Low (<0.4 mEq/L)	11 (20.0)	11 (20.0)
High (>1.0 mEq/L)	5 (9.1)	2 (3.6)
<b>Baseline lithium level (mEq/L), mean (SD)</b>		
Overall	0.62 (0.26)	0.6 (0.23)
Normal (0.4-1.0 mEq/L)	0.65 (0.14)	0.66 (0.15)
Low (<0.4 mEq/L)	0.26 (0.1)	0.27 (0.14)
High (>1.0 mEq/L)	1.11 (0.1)	1.06 (0.03)
<b>Laboratory data, mean (SD)</b>		
Aspartate aminotransferase (mg/dL)	23.2 (8.4)	22.5 (8.7)
Alanine aminotransferase (mg/dL)	23.2 (14.6)	25 (21.2)
Serum creatinine level (mg/dL)	0.78 (0.17)	0.79 (0.19)
eGFR <sup>a</sup> (mL/min/1.73 m <sup>2</sup> )	71.2 (16.3)	71.2 (16.7)
<b>Concomitant drugs, n (%)</b>		
Antipsychotics	30 (54.6)	33 (60.0)
Antidepressants	15 (27.3)	15 (27.3)
Mood stabilizers	25 (45.5)	26 (47.3)

<sup>a</sup>eGFR: estimated glomerular filtration rate.

## Clinical Efficacy Outcomes

At a median follow-up of 18 months, 54 (98%) patients in the reminder group and 46 (84%) patients in the usual care group completed the follow-up.

At the follow-up, 38 (69.1%) patients in the reminder group and 33 (60%) patients in the usual care group achieved therapeutic serum lithium levels, but the difference in the proportions was not significantly different between the 2 groups (adjusted OR 2.14, 95% CI 0.82-5.58,  $P=.12$ ; risk difference 0.136, 95% CI -0.017 to 0.288,  $P=.08$ ; risk ratio 1.17, 95% CI 0.94-1.47,  $P=.16$ ). With multiple imputation, the result was consistent but more conservative than that of the primary analysis (adjusted OR 1.22, 95% CI 0.73-2.06,  $P=.45$ ) (Table 2).

During this period, 94.4% of patients in the reminder group and 19.6% in the usual care group received serum lithium monitoring 2 times or more between the first and final tests (about once every 6 months; Table 3). The median number of serum lithium monitoring was 2 (IQR 2-3) in the intervention group and 0 (IQR 0-1) in the usual care group, and monitoring was more frequent in the intervention group (rate ratio 3.62, 95% CI, 2.47-5.29,  $P<.001$ ).

Exacerbation of mood disorders occurred in 17 (31.5%) patients in the intervention group and 16 (34.8%) patients in the usual care group, and the proportion was not significantly different (OR 0.97, 95% CI 0.42-2.28,  $P=.95$ ). The adherence reported by the PPDC was not significantly different between the 2 groups (Table 2).

**Table 2.** Primary and secondary outcomes.

	Reminders group (N=55)	Usual care group (N=55)	Effect size (95% CI)	P value
<b>Primary outcome<sup>a</sup></b>				
Achievement of therapeutic serum lithium level, n (%)	38 (69.1)	33 (60.0)	2.14 (0.82 to 5.58)	.12
<b>Secondary outcomes</b>				
Number of serum lithium monitoring, median (IQR) <sup>b</sup>	2 (2-3)	0 (0-1)	3.62 (2.47 to 5.29)	<.001
Exacerbation of mood disorders, n (%) <sup>a</sup>	17 (31.5)	16 (34.8)	0.97 (0.42 to 2.28)	.95
Proportion of days covered, median (IQR) <sup>c</sup>	1.0 (0.99-1)	1.0 (0.99-1)	0.016 ( 0.046 to 0.014)	.28
eGFR <sup>d</sup> level, mean (SD) <sup>c</sup>	71.6 (20)	69.8 (16.4)	1.80 ( 5.36 to 8.96)	.62
Thyrotropin level, mean (SD) <sup>c</sup>	2.61 (2.66)	2.46 (1.62)	0.167 ( 0.71 to 1.05)	.71
Serum lithium level, mean (SD) <sup>c</sup>	0.57 (0.25)	0.56 (0.23)	0.026 ( 0.058 to 0.109)	.55

<sup>a</sup>The effect sizes of the primary outcome and exacerbation of mood disorders are expressed as odds ratios with 95% CIs.

<sup>b</sup>The effect size of the number of serum lithium monitoring is expressed as a rate ratio with 95% CI.

<sup>c</sup>The effect sizes of the proportion of days covered, eGFR level, and thyrotropin level are expressed as  $\beta$ -coefficients with 95% CIs.

<sup>d</sup>eGFR: estimated glomerular filtration rate.

**Table 3.** Number of serum lithium monitoring.

Number of monitoring	Reminders group (N=54), n (%)	Usual care group (N=46), n (%)
None	0 (0)	24 (52.2)
1 time	3 (5.6)	13 (28.3)
2 times	27 (50)	7 (15.2)
3 times	18 (33.3)	2 (4.4)
4 or more times	6 (11.1)	0 (0)

## Safety Outcomes

The mean serum eGFR and TSH levels were similar between the 2 groups (Table 2). One patient in the intervention group discontinued lithium carbonate owing to lithium intoxication, and 1 patient in the usual care group temporarily discontinued but restarted it thereafter. One patient in the intervention group and 2 patients in the usual care group died for reasons unrelated to mood disorders, including suicide. Multimedia Appendix 2 summarizes the causes of death and loss to follow-up.

## Discussion

### Overview

In this single-center, unblinded EHR-nested RCT, we compared the effectiveness of EHR-nested reminders for serum lithium monitoring with that of usual care in patients with bipolar disorder or recurrent major depression. EHR-based reminders did not increase the achievement of therapeutic serum lithium concentration between 0.4 and 1.0 mEq/L at the follow-up visit compared to usual care. EHR-based reminders increased the number of serum lithium monitoring but did not decrease the exacerbation of mood disorders during the study period.

Monitoring rates of serum lithium level vary greatly among countries and have been reported to be relatively low in the United States and Japan. In the United States, one study showed that only 19% of patients received serum lithium monitoring within 6 months of initiation [19]. Another study showed that 36.5% of patients did not receive serum lithium monitoring at least once per year [20]. Moreover, in Japan, only 14.9% of patients receive serum lithium monitoring at least once a year [9]. Conversely, in Europe, 30% to 65% of patients receive serum lithium monitoring once every 3 months [10,11].

Therefore, further efforts to increase the serum lithium monitoring rate are needed when the monitoring rates are low. In the United Kingdom, audit-based quality improvement programs increase the number of patients with 4 serum lithium tests per year from 30% to 48% [12]. Similarly, active monitoring and reminder using the registry increased the proportion of patients who received serum lithium monitoring more than or equal to 4 times per year from 32.8% to 68.5% in Norfolk, United Kingdom [13]. Although these methods are certainly effective, they are also burdensome and costly.

In our study, the serum lithium monitoring rate dramatically increased to 94.4%, 3.6 times higher in the reminder group than the usual care group, with simple and inexpensive intervention. In addition, our intervention did not cause “EHR fatigue,” the

phenomenon that physicians may stop responding to EHR-alerts when they are exposed to too many alerts [21]. Our EHR-based reminders may be implemented for other conditions, such as abnormal involuntary movement scale for tardive dyskinesia, while monitoring if EHR fatigue is not taking place. However, the large increase in monitoring rate may have been partly due to the study environment. As noted earlier, this study was conducted at a tertiary-care community hospital. Adherence to reminders may have been different if the study had been conducted in different environments, such as general practitioners' offices, university hospitals, or multicenter trials.

Some studies have implemented and reported EHR-nested alerts. One study showed that EHR-nested alerts reduced unnecessary telemetry without worsening patient outcomes [14]. An EHR-based "pop-up" alert for acute kidney disease has increased the frequency of various care practices for acute kidney injury [15]. Recently, some RCTs, called EHR-nested RCTs, have used EHRs in their implementation [22]. EHR-nested RCTs aim to increase the feasibility of RCTs by using EHR to reduce trial costs, time burden, and human resources. Additionally, EHR-nested systems have increased the referral and recruitment of participants in some studies. However, no EHR-nested system has been shown to improve patient outcomes. In our study, the EHR-nested reminders did not increase the achievement of therapeutic serum concentration of lithium or decrease the exacerbation of mood disorders.

### Study Limitations

Our study has several limitations. First, caution is needed when interpreting the results. The primary outcome, the achievement of therapeutic serum lithium concentrations, was not statistically significant, but the OR of 2.14 was somewhat in favor of the EHR-nested alerts. However, more patients in the usual care

group were lost to follow-up, mainly because of moving to another hospital, and these patients were regarded as not having achieved the primary outcome. Multiple imputation analyses showed a consistent, but more conservative, effect than primary analysis. Second, this study randomized individual patients rather than physicians. Physicians may have learned how often they should monitor serum lithium levels, and this would tend to bias the results toward the null that the alerts did not improve the primary outcome. However, this would have worked toward decreasing the difference, but in our study, the monitoring of serum lithium was significantly and clearly more frequent in the reminder group. Third, the study may have lacked the statistical power to detect the small effect of the alert system. Our planned sample size was 120; however, recruitment was stopped at 110 because the eligible patient pool at Toyooka Hospital was exhausted. Fourth, adherence in our study, which was measured by PPDC and reached nearly 100% in both groups, was quite higher than in the previous reports, which reported that the median adherence was 50% to 60% [23]. The excellent adherence in our patients was desirable but may have caused "ceiling effect," which prevented us from detecting small differences. Finally, the generalizability of the findings of our study is limited because it was conducted in a rural tertiary-care hospital in Japan.

### Conclusions

In this single-center, unblinded, EHR-nested RCT, we found insufficient evidence for EHR-nested reminders to increase the achievement of therapeutic serum lithium concentration at 18 months after enrollment. However, the number of monitoring increased with a relatively simple and inexpensive intervention. The EHR-based reminders may be useful to improve quality of care for patients on lithium maintenance therapy, and they have potential to be applied to other problems.

### Acknowledgments

The authors thank all staff at the Department of Psychiatry of Toyooka Hospital for their support in the trial. They also thank Dr Masakatsu Hattori and Mr Takahiko Tsujimoto (Real World Data Co Ltd) for the development, operation, and maintenance of the EHR-nested system. This study was supported by JSPS KAKENHI (TAF, grant JP17H04122); (TS, grant JP19K10509). None of the study funders had any role in the study design, collection, management, analysis, interpretation of data, writing of the report, or decision to submit the report for publication.

### Authors' Contributions

TS, MA, and TAF had full access to all the data in the study and take the responsibility for the integrity of the data and the accuracy of the data analysis. The first authors (TS and MA) contributed equally. TS, MA, K Kawakami, and TAF conceived the study. TS, MA, HK, ST, K Kawakami, and TAF designed the study. MA, HK, T Miki, YS, TA, K Katsuragi, TK, SU, T Miyagi, and SN collected the data. TS, MA, ST, and TAF contributed to data analysis and interpretation. TS and ST performed statistical analyses. TS, MA, and TAF wrote the first draft of this manuscript. All authors critically reviewed and approved the final version of the manuscript. TS and TAF obtained funding. K Kawakami and TAF supervised this study.

### Conflicts of Interest

ST has received lecture fees from Bayer Yakuhin, Amgen Astellas BioPharma KK, and the Research Institute of Healthcare Data Science. He has received consultation fees and outsourcing fees from Daiichi Sankyo Co Ltd, Boehringer Ingelheim, Satt, and the Public Health Research Foundation. He has received research grants from the Japan Agency for Medical Research and Development, the Japanese Ministry of Health Labor and Welfare, the Japanese Ministry of Education, Science, and Technology, and Novo Nordisk. He has been engaged in a research project with the Japan Agency for Medical Research and Development. K Kawakami has received research funds from Eisai Co, Ltd; Kyowa Kirin Co, Ltd; Sumitomo Dainippon Pharma Co, Ltd; Pfizer Inc; Stella Pharma Corporation; CMIC Co, Ltd; Suntory Beverage & Food Ltd; Mitsubishi Corporation, and Real World Data

Co, Ltd; consulting fees from LEBER Inc; JMDC Inc; Shin Nippon Biomedical Laboratories Ltd; Kaken Pharmaceutical Co, Ltd; Advanced Medical Care Inc; executive compensation from Cancer Intelligence Care Systems, Inc; honorarium from Mitsubishi Chemical Holdings Corporation, Mitsubishi Corporation, and Pharma Business Academy; and holds stock in Real World Data Co, Ltd. TAF has received lecture fees from Janssen, Meiji, Mitsubishi-Tanabe, MSD, and Pfizer. He has received research support from Mitsubishi Tanabe and Mochida. All other authors have reported that they have no relationships relevant to the contents of this article.

---

### Multimedia Appendix 1

Eligibility criteria.

[\[DOCX File, 16 KB-Multimedia Appendix 1\]](#)

---

### Multimedia Appendix 2

Reasons of death and unable to follow-up.

[\[DOCX File, 15 KB-Multimedia Appendix 2\]](#)

---

### Multimedia Appendix 3

CONSORT-eHEALTH checklist (V 1.6.1).

[\[PDF File \(Adobe PDF File\), 387 KB-Multimedia Appendix 3\]](#)

---

### References

1. Cipriani A, Smith K, Burgess S, Carney S, Goodwin G, Geddes J. Lithium versus antidepressants in the long-term treatment of unipolar affective disorder. *Cochrane Database Syst Rev* 2006;2006(4):CD003492 [[FREE Full text](#)] [doi: [10.1002/14651858.CD003492.pub2](https://doi.org/10.1002/14651858.CD003492.pub2)] [Medline: [17054174](https://pubmed.ncbi.nlm.nih.gov/17054174/)]
2. Miura T, Noma H, Furukawa TA, Mitsuyasu H, Tanaka S, Stockton S, et al. Comparative efficacy and tolerability of pharmacological treatments in the maintenance treatment of bipolar disorder: a systematic review and network meta-analysis. *Lancet Psychiatry* 2014;1(5):351-359. [doi: [10.1016/S2215-0366\(14\)70314-1](https://doi.org/10.1016/S2215-0366(14)70314-1)] [Medline: [26360999](https://pubmed.ncbi.nlm.nih.gov/26360999/)]
3. Nelson JC, Baumann P, Delucchi K, Joffe R, Katona C. A systematic review and meta-analysis of lithium augmentation of tricyclic and second generation antidepressants in major depression. *J Affect Disord* 2014;168:269-275. [doi: [10.1016/j.jad.2014.05.053](https://doi.org/10.1016/j.jad.2014.05.053)] [Medline: [25069082](https://pubmed.ncbi.nlm.nih.gov/25069082/)]
4. Practice Guideline for the Treatment of Patients with Bipolar Disorder, 2nd ed. American Psychiatric Association. 2002. URL: [https://psychiatryonline.org/pb/assets/raw/sitewide/practice\\_guidelines/guidelines/bipolar.pdf](https://psychiatryonline.org/pb/assets/raw/sitewide/practice_guidelines/guidelines/bipolar.pdf) [accessed 2022-03-22]
5. Fountoulakis KN, Grunze H, Vieta E, Young A, Yatham L, Blier P, et al. The International College of Neuro-Psychopharmacology (CINP) treatment guidelines for bipolar disorder in adults (CINP-BD-2017), Part 3: the clinical guidelines. *Int J Neuropsychopharmacol* 2017;20(2):180-195 [[FREE Full text](#)] [doi: [10.1093/ijnp/pyw109](https://doi.org/10.1093/ijnp/pyw109)] [Medline: [27941079](https://pubmed.ncbi.nlm.nih.gov/27941079/)]
6. Goodwin G, Haddad P, Ferrier I, Aronson J, Barnes T, Cipriani A, et al. Evidence-based guidelines for treating bipolar disorder: revised third edition recommendations from the British Association for Psychopharmacology. *J Psychopharmacol* 2016;30(6):495-553 [[FREE Full text](#)] [doi: [10.1177/0269881116636545](https://doi.org/10.1177/0269881116636545)] [Medline: [26979387](https://pubmed.ncbi.nlm.nih.gov/26979387/)]
7. Kanba S, Kato T, Terao T, Yamada K, Committee for Treatment Guidelines of Mood Disorders, Japanese Society of Mood Disorders, 2012. Guideline for treatment of bipolar disorder by the Japanese Society of Mood Disorders, 2012. *Psychiatry Clin Neurosci* 2013;67(5):285-300 [[FREE Full text](#)] [doi: [10.1111/pcn.12060](https://doi.org/10.1111/pcn.12060)] [Medline: [23773266](https://pubmed.ncbi.nlm.nih.gov/23773266/)]
8. Yatham LN, Kennedy SH, Parikh SV, Schaffer A, Bond DJ, Frey BN, et al. Canadian Network for Mood and Anxiety Treatments (CANMAT) and International Society for Bipolar Disorders (ISBD) 2018 guidelines for the management of patients with bipolar disorder. *Bipolar Disord* 2018;20(2):97-170 [[FREE Full text](#)] [doi: [10.1111/bdi.12609](https://doi.org/10.1111/bdi.12609)] [Medline: [29536616](https://pubmed.ncbi.nlm.nih.gov/29536616/)]
9. Ooba N, Tsutsumi D, Kobayashi N, Hidaka S, Hayashi H, Obara T, et al. Prevalence of therapeutic drug monitoring for lithium and the impact of regulatory warnings: analysis using Japanese claims database. *Ther Drug Monit* 2018;40(2):252-256 [[FREE Full text](#)] [doi: [10.1097/FTD.0000000000000483](https://doi.org/10.1097/FTD.0000000000000483)] [Medline: [29420333](https://pubmed.ncbi.nlm.nih.gov/29420333/)]
10. Collins N, Barnes TR, Shingleton-Smith A, Gerrett D, Paton C. Standards of lithium monitoring in mental health trusts in the UK. *BMC Psychiatry* 2010;10:80 [[FREE Full text](#)] [doi: [10.1186/1471-244X-10-80](https://doi.org/10.1186/1471-244X-10-80)] [Medline: [20939864](https://pubmed.ncbi.nlm.nih.gov/20939864/)]
11. Nederlof M, Egberts TC, van Londen L, de Rotte MC, Souverein PC, Herings RM, et al. Compliance with the guidelines for laboratory monitoring of patients treated with lithium: a retrospective follow-up study among ambulatory patients in the Netherlands. *Bipolar Disord* 2019;21(5):419-427 [[FREE Full text](#)] [doi: [10.1111/bdi.12730](https://doi.org/10.1111/bdi.12730)] [Medline: [30472760](https://pubmed.ncbi.nlm.nih.gov/30472760/)]
12. Paton C, Adroer R, Barnes TR. Monitoring lithium therapy: the impact of a quality improvement programme in the UK. *Bipolar Disord* 2013;15(8):865-875. [doi: [10.1111/bdi.12128](https://doi.org/10.1111/bdi.12128)]



13. Kirkham E, Bazire S, Anderson T, Wood J, Grassby P, Desborough JA. Impact of active monitoring on lithium management in Norfolk. *Ther Adv Psychopharmacol* 2013;3(5):260-265 [FREE Full text] [doi: [10.1177/2045125313486510](https://doi.org/10.1177/2045125313486510)] [Medline: [24167700](https://pubmed.ncbi.nlm.nih.gov/24167700/)]
14. Najafi N, Cucina R, Pierre B, Khanna R. Assessment of a targeted electronic health record intervention to reduce telemetry duration: a cluster-randomized clinical trial. *JAMA Intern Med* 2019;179(1):11-15 [FREE Full text] [doi: [10.1001/jamainternmed.2018.5859](https://doi.org/10.1001/jamainternmed.2018.5859)] [Medline: [30535345](https://pubmed.ncbi.nlm.nih.gov/30535345/)]
15. Wilson FP, Martin M, Yamamoto Y, Partridge C, Moreira E, Arora T, et al. Electronic health record alerts for acute kidney injury: multicenter, randomized clinical trial. *BMJ* 2021;372:m4786 [FREE Full text] [doi: [10.1136/bmj.m4786](https://doi.org/10.1136/bmj.m4786)] [Medline: [33461986](https://pubmed.ncbi.nlm.nih.gov/33461986/)]
16. Seki T, Aki M, Kawashima H, Miki T, Tanaka S, Kawakami K, et al. Electronic health record nested pragmatic randomized controlled trial of a reminder system for serum lithium level monitoring in patients with mood disorder: KONOTORI study protocol. *Trials* 2019;20(1):706 [FREE Full text] [doi: [10.1186/s13063-019-3847-9](https://doi.org/10.1186/s13063-019-3847-9)] [Medline: [31829279](https://pubmed.ncbi.nlm.nih.gov/31829279/)]
17. Schulz KF, Altman DG, Moher D, CONSORT Group. CONSORT 2010 statement: updated guidelines for reporting parallel group randomized trials. *Ann Intern Med* 2010;152(11):726-732 [FREE Full text] [doi: [10.7326/0003-4819-152-11-201006010-00232](https://doi.org/10.7326/0003-4819-152-11-201006010-00232)] [Medline: [20335313](https://pubmed.ncbi.nlm.nih.gov/20335313/)]
18. Sterne JAC, White IR, Carlin JB, Spratt M, Royston P, Kenward MG, et al. Multiple imputation for missing data in epidemiological and clinical research: potential and pitfalls. *BMJ* 2009;338(jun29 1):b2393-b2393. [doi: [10.1136/bmj.b2393](https://doi.org/10.1136/bmj.b2393)]
19. Kilbourne AM, Post EP, Bauer MS, Zeber JE, Copeland LA, Good CB, et al. Therapeutic drug and cardiovascular disease risk monitoring in patients with bipolar disorder. *J Affect Disord* 2007;102(1-3):145-151. [doi: [10.1016/j.jad.2007.01.006](https://doi.org/10.1016/j.jad.2007.01.006)] [Medline: [17276514](https://pubmed.ncbi.nlm.nih.gov/17276514/)]
20. Marcus SC, Olfson M, Pincus HA, Zarin DA, Kupfer DJ. Therapeutic drug monitoring of mood stabilizers in Medicaid patients with bipolar disorder. *Am J Psychiatry* 1999;156(7):1014-1018. [doi: [10.1176/ajp.156.7.1014](https://doi.org/10.1176/ajp.156.7.1014)] [Medline: [10401444](https://pubmed.ncbi.nlm.nih.gov/10401444/)]
21. Embi PJ, Leonard AC. Evaluating alert fatigue over time to EHR-based clinical trial alerts: findings from a randomized controlled study. *J Am Med Inform Assoc* 2012;19(e1):e145-e148 [FREE Full text] [doi: [10.1136/amiainl-2011-000743](https://doi.org/10.1136/amiainl-2011-000743)] [Medline: [22534081](https://pubmed.ncbi.nlm.nih.gov/22534081/)]
22. Pletcher MJ, Flaherman V, Najafi N, Patel S, Rushakoff RJ, Hoffman A, et al. Randomized controlled trials of electronic health record interventions: design, conduct, and reporting considerations. *Ann Intern Med* 2020;172(11 Suppl):S85-S91 [FREE Full text] [doi: [10.7326/M19-0877](https://doi.org/10.7326/M19-0877)] [Medline: [32479183](https://pubmed.ncbi.nlm.nih.gov/32479183/)]
23. Lingam R, Scott J. Treatment non-adherence in affective disorders. *Acta Psychiatr Scand* 2002;105(3):164-172. [doi: [10.1034/j.1600-0447.2002.1r084.x](https://doi.org/10.1034/j.1600-0447.2002.1r084.x)] [Medline: [11939969](https://pubmed.ncbi.nlm.nih.gov/11939969/)]

## Abbreviations

- eGFR:** estimated glomerular filtration rate  
**EHR:** electronic health record  
**KONOTORI:** Kyoto-Toyooka nested controlled trial of reminders  
**PPDC:** proportion of days covered  
**RCT:** randomized controlled trial  
**OR:** odds ratio  
**TSH:** thyrotropin

*Edited by R Kukafka, A Mavragani; submitted 28.06.22; peer-reviewed by S Parikh, L Heryawan; comments to author 03.01.23; revised version received 12.01.23; accepted 21.02.23; published 22.03.23*

### *Please cite as:*

Seki T, Aki M, Furukawa TA, Kawashima H, Miki T, Sawaki Y, Ando T, Katsuragi K, Kawashima T, Ueno S, Miyagi T, Noma S, Tanaka S, Kawakami K

*Electronic Health Record–Nested Reminders for Serum Lithium Level Monitoring in Patients With Mood Disorder: Randomized Controlled Trial*

*J Med Internet Res* 2023;25:e40595

URL: <https://www.jmir.org/2023/1/e40595>

doi: [10.2196/40595](https://doi.org/10.2196/40595)

PMID:

©Tomotsugu Seki, Morio Aki, Toshi A Furukawa, Hirotsugu Kawashima, Tomotaka Miki, Yujin Sawaki, Takaaki Ando, Kentaro Katsuragi, Takahiko Kawashima, Senkei Ueno, Takashi Miyagi, Shun'ichi Noma, Shiro Tanaka, Koji Kawakami. Originally published in the Journal of Medical Internet Research (<https://www.jmir.org>), 22.03.2023. This is an open-access article distributed

under the terms of the Creative Commons Attribution License (<https://creativecommons.org/licenses/by/4.0/>), which permits unrestricted use, distribution, and reproduction in any medium, provided the original work, first published in the Journal of Medical Internet Research, is properly cited. The complete bibliographic information, a link to the original publication on <https://www.jmir.org/>, as well as this copyright and license information must be included.