




# Anti-integrin $\alpha\text{v}\beta\text{6}$ autoantibodies in patients with primary sclerosing cholangitis

Hiroyuki Yoshida<sup>1</sup> · Masahiro Shiokawa<sup>1</sup>  · Takeshi Kuwada<sup>1</sup> · Yuya Muramoto<sup>1</sup> · Sakiko Ota<sup>1</sup> · Yoshihiro Nishikawa<sup>1</sup> · Hirona Maeda<sup>3</sup> · Nobuyuki Kakiuchi<sup>3</sup> · Kanako Okamoto<sup>1</sup> · Hajime Yamazaki<sup>4</sup> · Masataka Yokode<sup>1</sup> · Takeharu Nakamura<sup>1</sup> · Shimpei Matsumoto<sup>1</sup> · Tomonori Hirano<sup>1</sup> · Hirokazu Okada<sup>1</sup> · Saiko Marui<sup>1</sup> · Yuko Sogabe<sup>1</sup> · Tomoaki Matsumori<sup>1</sup> · Atsushi Mima<sup>1</sup> · Norimitsu Uza<sup>1</sup> · Yuji Eso<sup>1</sup> · Atsushi Takai<sup>1</sup> · Ken Takahashi<sup>1</sup> · Yoshihide Ueda<sup>2</sup> · Yuzo Kodama<sup>2</sup> · Tsutomu Chiba<sup>1,5</sup> · Hiroshi Seno<sup>1</sup>

Received: 11 February 2023 / Accepted: 31 May 2023 / Published online: 13 June 2023  
© The Author(s) 2023

## Abstract

**Background** Patients with primary sclerosing cholangitis (PSC) possess autoantibodies against biliary epithelial cells. However, the target molecules remain unknown.

**Methods** The sera of patients with PSC and controls were subjected to enzyme-linked immunosorbent assays to detect autoantibodies using recombinant integrin proteins. Integrin  $\alpha\text{v}\beta\text{6}$  expression in the bile duct tissues was examined using immunofluorescence. The blocking activity of the autoantibodies was examined using solid-phase binding assays.

**Results** Anti-integrin  $\alpha\text{v}\beta\text{6}$  antibodies were detected in 49/55 (89.1%) patients with PSC and 5/150 (3.3%) controls ( $P < 0.001$ ), with a sensitivity and specificity of 89.1% and 96.7%, respectively, for PSC diagnosis. When focusing on the presence or absence of IBD, the proportion of the positive antibodies in PSC with IBD was 97.2% (35/36) and that in PSC alone was 73.7% (14/19) ( $P = 0.008$ ). Integrin  $\alpha\text{v}\beta\text{6}$  was expressed in bile duct epithelial cells.

Immunoglobulin (Ig)G from 15/33 patients with PSC blocked integrin  $\alpha\text{v}\beta\text{6}$ -fibronectin binding through an RGD (Arg–Gly–Asp) tripeptide motif.

**Conclusions** Autoantibodies against integrin  $\alpha\text{v}\beta\text{6}$  were detected in most patients with PSC; anti-integrin  $\alpha\text{v}\beta\text{6}$  antibody may serve as a potential diagnostic biomarker for PSC.

**Keywords** Biomarker · Inflammatory bowel diseases · Autoimmunity · Epithelial cell adhesion molecule · Fibronectin

## Introduction

Primary sclerosing cholangitis (PSC) is an idiopathic and lethal cholestatic liver disease characterized by persistent and progressive biliary inflammation and fibrosis [1–4]. Although the cause and pathogenesis of PSC are unclear, it is generally accepted that both genetic and environmental factors contribute to the development of the disease. PSC diagnosis is based on cholangiographic findings, histology, and the absence of alternative diagnoses [5]. Various forms of secondary sclerosing cholangitis mimic PSC, thus complicating the diagnosis of PSC. Therefore, the development of specific diagnostic markers for PSC is needed.

Although multiple factors, such as genetic predisposition, environmental factors, dysbiosis, and dysregulated immune responses, are known to be involved in the pathogenesis of PSC, the exact underlying mechanisms remain unclear [1, 2]. The association with human leukocyte antigens and the presence of autoantibodies in the sera of patients with PSC support the important roles of

✉ Masahiro Shiokawa  
machan@kuhp.kyoto-u.ac.jp

<sup>1</sup> Department of Gastroenterology and Hepatology, Kyoto University Graduate School of Medicine, Kyoto, Japan

<sup>2</sup> Division of Gastroenterology, Department of Internal Medicine, Kobe University Graduate School of Medicine, Hyogo, Japan

<sup>3</sup> Department of Pathology and Tumor Biology, Kyoto University, Kyoto, Japan

<sup>4</sup> Section of Clinical Epidemiology, Department of Community Medicine, Graduate School of Medicine, Kyoto University, Kyoto, Japan

<sup>5</sup> Kansai Electric Power Hospital, Osaka, Japan

immune-mediated mechanisms in PSC [1]. Patients with PSC have been reported to possess autoantibodies against biliary epithelial cells [6, 7]. Biliary epithelial cells are the main target of PSC. However, the target molecules or the mechanisms underlying the injuries have not been elucidated.

PSC is strongly associated with inflammatory bowel disease (IBD), suggesting common pathophysiological mechanisms between PSC and IBD [1]. We previously reported that anti-integrin  $\alpha\text{v}\beta\text{6}$  autoantibodies are specifically found in patients with ulcerative colitis (UC), the most common type of IBD [8]. Recently, it was reported that most patients with UC in Europe and North America also possess anti-integrin  $\alpha\text{v}\beta\text{6}$  autoantibodies [9, 10]. Integrins are a large family of heterodimeric cell surface receptors comprising two non-covalently associated  $\alpha$  and  $\beta$  subunits that bind to the extracellular matrix (ECM) and mediate cell adhesion [11]. In mammals, 18  $\alpha$  and 8  $\beta$  subunits have been identified that together form a minimum of 24 distinct heterodimers [11]. Among them, integrin  $\alpha\text{v}\beta\text{6}$  is a receptor for ECM proteins, such as fibronectin [12], and its expression is restricted to epithelial cells [13]. Integrin  $\alpha\text{v}\beta\text{6}$  on biliary epithelial cells is important for promoting the proliferation of biliary epithelial cells following liver injuries [14]. A recent report showed that germline mutations in human integrin  $\beta\text{6}$ , a subunit of integrin  $\alpha\text{v}\beta\text{6}$ , cause lethal cholestatic liver injuries and bloody diarrhea [15], which are major symptoms of PSC and UC, respectively, suggesting that integrin  $\alpha\text{v}\beta\text{6}$  is a key molecule for PSC as well as UC.

Considering the close link between PSC and UC, the report that the human integrin  $\beta\text{6}$  mutation causes PSC- and UC-like clinical characteristics [15], and the presence of anti-integrin  $\alpha\text{v}\beta\text{6}$  autoantibodies in most patients with UC [8], we hypothesized that patients with PSC also possess autoantibodies against integrin family proteins, especially integrin  $\alpha\text{v}\beta\text{6}$ .

## Materials and methods

### Patients

We enrolled 55 patients with PSC and 150 controls [127 disease controls and 23 healthy controls (HCs)] in this study. The clinical characteristics of patients with PSC and the controls are summarized in Table 1 and Table S1. The patients with PSC were diagnosed based on serum biochemistry, cholangiogram, histological findings, and association with IBD. We also excluded secondary sclerosing cholangitis according to the method described by Ludwig et al. [16]. The study did not include cases of small-duct PSC, and thus all the patients were categorized as large

duct PSC, but included two cases of PSC-autoimmune hepatitis (AIH) overlap syndrome (PSC 41 and 46). Only five patients were treatment-naïve. The patients with UC were diagnosed according to a combination of symptoms, endoscopic findings, histologic findings, and the absence of alternative diagnoses [17, 18]. More detailed clinical information is provided in Table S2. It is generally considered that PSC-associated IBD and solitary UC are different diseases [19–21]. Indeed, colonic lesions of IBD accompanied by PSC are usually mild and mainly occur in the proximal colon. By contrast, solitary UC invariably affects the distal colon, including the rectum [21], and thus, IBD with PSC is often named PSC-associated IBD [22, 23]. Accordingly, in this study, we defined PSC, with or without IBD, as PSC and defined UC without PSC as UC.

In total, 36 of the 55 patients with PSC had IBD, and the remaining 19 had PSC alone. Among the 36 PSC patients with IBD, the partial Mayo score for IBD was 0 in 31 patients, 1 in 3 patients, 2 in 1 patient, and 3 in 1 patient (Table 1). Most patients with IBD and PSC were under remission. All the PSC patients underwent a colonoscopy to confirm the presence or absence of IBD. The diagnostic criteria for control diseases are listed in Table S3. There was no patient with UC among the disease controls. The serum samples of the study participants were obtained from January 2016 to February 2021 at the Kyoto University Hospital. The screening was performed on 17 patients with PSC and 12 controls; validation was performed with another 38 patients with PSC and 138 controls (Table S1). We used the sera of randomly selected 37 patients with PSC and 16 controls to examine IgG subclasses and antibody isotypes and performed a solid-phase integrin  $\alpha\text{v}\beta\text{6}$  binding assay. All serum samples were stored at  $-80\text{ }^{\circ}\text{C}$  until assayed. Histologic analysis of frozen tissues was performed using bile duct tissues of 10 patients with PSC and 5 controls who underwent liver transplantation due to liver failure from other diseases or cholangiocarcinoma (Table S1).

The experiments were performed according to the Declaration of Helsinki and approved by the Ethics Committee of Kyoto University Graduate School and Faculty of Medicine (protocol number: R1004 and G738). All subjects provided written informed consent.

### ELISA

Integrins were screened using human recombinant proteins purchased from ACRO Biosystems (Newark, DE, USA) and R&D Systems (Minneapolis, MN, USA) (Table S4). For the detection of serum IgG antibodies against integrins, we used an ELISA Starter Accessory kit (E101, Bethyl Laboratories, Montgomery, TX, USA) following the

**Table 1** Clinical features of PSC patients and controls

	PSC with IBD (n = 36)	PSC without IBD (n = 20)	CCC (n = 32)	IgG4-SC (n = 14)	PBC (n = 39)	AIH (n = 15)	Collagen disease (n = 27)	Healthy control (n = 23)
Age								
Range	19–74	22–80	52–85	43–84	35–86	24–90	20–78	20–78
Median	39.0	42.5	70.0	70.0	66.0	69.0	56.0	56.0
Average	39.7	46.0	70.9	69.7	65.0	62.7	55.9	55.9
Sex male (%)	25 (69.4)	13 (65.0)	19 (59.4)	11 (78.6)	6 (15.4)	1 (6.7)	8 (29.6)	14 (60.9)
Age of diagnosis								
Range	11–66	18–76						
Median	27.0	39.0						
Average	30.1	41.0						
ALP <sup>a</sup> (U/L)								
Range	57–1000	69–666						
Median	277.0	264.0						
Average	323.0	275.0						
PMS (%)								
0	31 (86.1)							
1	3 (8.3)							
2	1 (2.8)							
3	1 (2.8)							
> 4	0 (0)							
Rectal sparing (%)	16/25 (64)							

PSC primary sclerosing cholangitis, IBD inflammatory bowel disease, CCC cholangiocellular carcinoma, IgG4-SC IgG4-related sclerosing cholangitis, PBC primary biliary cholangitis, AIH autoimmune hepatitis, ALP alkaline phosphatase, PMS partial Mayo score

<sup>a</sup>The normal range of ALP is 38–113 U/L

manufacturer's instructions. Briefly, microtiter plates were coated with 100  $\mu$ L of 2  $\mu$ g/mL recombinant proteins, incubated overnight at 4  $^{\circ}$ C, blocked, and incubated with 100  $\mu$ L of diluted serum (1:100) or purified IgG (1:100) from patients for 60 min at room temperature. After washing, the plates were incubated with 100  $\mu$ L of rabbit anti-human IgG antibody conjugated with horseradish peroxidase (HRP) (1:50,000; ab6759, Abcam, Cambridge, UK) at room temperature for 60 min. After washing, the bound reactants were detected by incubation with 3,3',5,5'-tetramethylbenzidine for 7 min at room temperature. Absorbance was noted at 450 nm. Mg<sup>2+</sup> and Ca<sup>2+</sup> are important for integrin heterodimer formation and stability [24–26]. ELISA for integrin  $\alpha$ v $\beta$ 6 in the presence of Mg<sup>2+</sup> and Ca<sup>2+</sup> is effective in increasing the sensitivity and specificity [8]. Thus, in this study, all ELISAs were performed in the presence of MgCl<sub>2</sub> and CaCl<sub>2</sub> (1 mM each).

To examine the subclasses of the autoantibodies, we used the following secondary antibodies: anti-human IgG1, IgG2, IgG3, and IgG4 conjugated with HRP (1:2000;

A-10648, Thermo Fisher Scientific Waltham, MA, USA; BS-AP007, BS-AP008, and BS-AP009; The Binding Site, Birmingham, UK). The following secondary antibodies were used to examine the isotypes of the autoantibodies: anti-human IgA, IgM, and IgE conjugated with HRP (1:50,000 A80-102P, 1:100,000 A80-100P, and 1:1000 A80-108P; Bethyl Laboratories).

To study whether the RGD (Arg–Gly–Asp) peptide inhibited the binding of patient IgG to integrin  $\alpha$ v $\beta$ 6, we added the RGDS (Arg–Gly–Asp–Ser) peptide (A9041, Sigma Aldrich, St. Louis, MO, USA) or the control RGES peptide (Arg–Gly–Glu–Ser) (A5686, Sigma Aldrich) to purified IgG before incubation.

### Preparation of human IgG

To purify IgG from the sera of patients with PSC and the controls, we used Ab-Rapid SPiN (P-013, ProteNova, Higashikagawa, Japan), according to the manufacturer's instructions. The purified IgG was dialyzed against

phosphate-buffered saline (PBS, pH 7.2), concentrated by ultrafiltration using an Amicon Ultra filter (UFC805024, Millipore, Darmstadt, Germany) to the same volume as the sera before purification, and stored at  $-20^{\circ}\text{C}$ . The purified IgG concentration was measured using a Human IgG EIA kit (MK136, TaKaRa, Kusatsu, Japan). The purity of the IgG fraction was confirmed by testing for IgA, IgM, IgE, and protein contaminants using a Human IgA ELISA kit (E88-102, Bethyl Laboratories), a Human IgM ELISA kit (E88-100, Bethyl Laboratories), a Human IgE ELISA kit (E88-108, Bethyl Laboratories), and sodium dodecyl sulfate–polyacrylamide gel electrophoresis with Coomassie Brilliant Blue staining, respectively. The IgG recovery rate from the sera was confirmed to be  $> 90\%$  in five patients with PSC and five controls, as in our previous study [27].

### Immunofluorescence

Immunofluorescence was performed according to standard methods for frozen tissues. The primary antibody was anti-integrin  $\alpha v\beta 6$  (1:1000; ab77906, Abcam), and the secondary antibody was Alexa Fluor 594 anti-mouse IgG (1:1000; A-11032, Thermo Fisher Scientific). All procedures were performed in the presence of  $\text{MgCl}_2$  and  $\text{CaCl}_2$  (1 mM each) because  $\text{Mg}^{2+}$  and  $\text{Ca}^{2+}$  are important for integrin heterodimer formation and stability, and the anti-integrin  $\alpha v\beta 6$  antibody detects the integrin  $\alpha v\beta 6$  heterodimer formation [8, 24].

### Solid-phase integrin $\alpha v\beta 6$ binding assay

A solid-phase integrin  $\alpha v\beta 6$  binding assay was performed as previously described, with minor modifications [24]. Briefly, a 96-well microtiter plate was coated with 100  $\mu\text{L}$ /well of 2  $\mu\text{g}/\text{mL}$  integrin  $\alpha v\beta 6$  overnight at  $4^{\circ}\text{C}$ , blocked, and then incubated with 100  $\mu\text{L}$  of diluted patient or control IgG (1:10) for 60 min at room temperature. After washing five times with a wash solution, the plates were incubated with 100  $\mu\text{L}$  of 2  $\mu\text{g}/\text{mL}$  fibronectin (FC010, Millipore Sigma, Burlington, MA, USA) at room temperature for 60 min. After washing five times with a wash solution, an anti-fibronectin antibody (1:5000; ab2413, Abcam) was added, followed by incubation at room temperature for 60 min. After washing five times with a wash solution, an anti-rabbit IgG HRP-conjugated secondary antibody (1:10,000; A27036, Thermo Fisher Scientific) was added, followed by incubation at room temperature for 60 min. After washing five times with a wash solution, bound reactants were detected by incubation with 3,3',5,5'-tetramethylbenzidine for 10 min at room temperature. Absorbance was determined at 450 nm. A solid-phase integrin  $\alpha v\beta 6$  binding assay was performed in the presence of  $\text{MgCl}_2$  and  $\text{CaCl}_2$  (1 mM each).

Before use, we determined that the anti-rabbit IgG HRP secondary antibody did not cross-react with the human IgG using an ELISA. Blank wells coated with integrin  $\alpha v\beta 6$  were incubated with fibronectin without patient or control IgG to calculate the inhibition rate. The inhibition rate was calculated as follows:  $(\text{blank OD} - \text{sample OD}) / \text{blank OD}$ . We used monoclonal anti-integrin  $\alpha v\beta 6$  antibody 10D5 (ab77906, Abcam) as a positive control.

### Statistical analysis

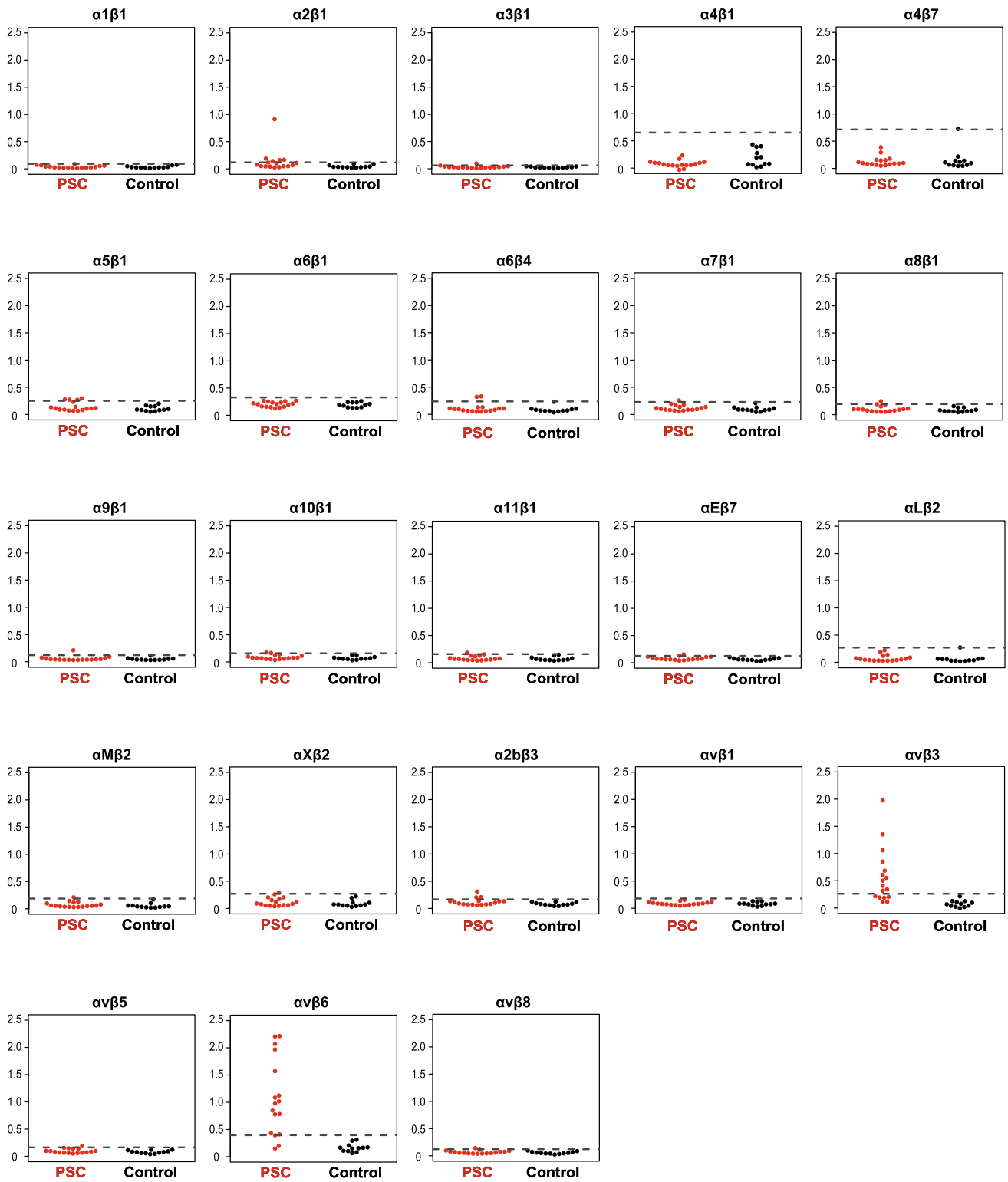
Statistical analyses were performed using GraphPad Prism version 9.1.2 (GraphPad, La Jolla, California, USA) or R version 3.6.3. Associations between categorical variables were tested using Fisher's exact tests. The correlation between IgG antibody titers against integrin  $\alpha v\beta 6$  and the blocking activity of integrin  $\alpha v\beta 6$ -fibronectin binding was evaluated using the Pearson product–moment correlation. Statistical significance was defined as  $P < 0.05$ .

## Results

### Detection of anti-integrin $\alpha v\beta 6$ autoantibodies in sera of patients with PSC

First, we examined whether the screening group of patients with PSC possessed autoantibodies against integrin family proteins. The sera of 17 patients with PSC and 12 controls (9 disease controls and 3 HCs; Table S1) were subjected to ELISAs for 23 recombinant integrin proteins (Fig. 1). We found that 15 (88.2%) and 11 (64.7%) patients with PSC possessed IgG antibodies against integrin  $\alpha v\beta 6$  and  $\alpha v\beta 3$ , respectively. These values were based on a cutoff optical density (OD) of the mean plus three standard deviations of the control sera. By contrast, none or only a small number of patients with PSC possessed IgG antibodies against other integrins. Since integrin  $\alpha v\beta 6$  is exclusively expressed in epithelial cells including the bile duct [13], and the site of the injury in PSC is bile duct cells [1], and the sensitivity (88.2%) of the anti-integrin  $\alpha v\beta 6$  autoantibodies for PSC was the highest, we focused on integrin  $\alpha v\beta 6$  for further analyses.

In the screening group, the sensitivity and specificity of the anti-integrin  $\alpha v\beta 6$  IgG autoantibodies for PSC were 88.2% and 100%, respectively (Fig. 1). To validate the data of the screening group, we examined the sera of another 38 patients with PSC, 118 disease controls, and 20 HCs (Table S1). We found that 34/38 (89.5%) patients with PSC and 5/138 (3.6%) controls possessed IgG antibodies against integrin  $\alpha v\beta 6$  ( $P < 0.001$ ) (Fig. 2a). When the screening and validation groups were combined, IgG antibodies against integrin  $\alpha v\beta 6$  were present in 49/55



**Fig. 1** Screening of autoantibodies against various integrin proteins in sera from patients with PSC. Serum IgG antibodies against integrin family proteins were quantified using an enzyme-linked immunosorbent assay. Seventeen patients with PSC and 12 controls (2 CCC, 1 IgG4-SC, 3 AIH, 3 PBC patients, and 3 healthy controls; Table S1) were examined. The cut-off OD, defined as the mean plus three standard deviations of the control sera, is indicated by a dashed line. In total, 14 and 11 of the 17 PSC patients possessed IgG antibodies against integrin  $\alpha v\beta 6$  and  $\alpha v\beta 3$ , respectively. Furthermore, 0–5 patients with PSC had IgG antibodies against other integrins. None or only 1 of the controls had IgG antibodies against any integrins. The y-axis shows the OD values of anti-integrin serum IgG levels (A450) against integrins. PSC primary sclerosing cholangitis, IgG immunoglobulin G, CCC cholangiocellular carcinoma, IgG4-SC IgG4-related sclerosing cholangitis, AIH autoimmune hepatitis, PBC primary biliary cholangitis, OD optical density

(89.1%) patients with PSC and 5/150 (3.3%) controls ( $P < 0.001$ ) (Fig. 2b). The sensitivity and specificity of the anti-integrin  $\alpha v\beta 6$  IgG autoantibodies for PSC were 89.1% and 96.7%, respectively. Furthermore, when focusing on the presence or absence of IBD, the proportion of the positive antibodies in PSC with associated IBD was 97.2% (35/36) and that in PSC alone was 73.7% (14/19) ( $P = 0.008$ ) (Fig. 2c). Also, two of the two patients with PSC-AIH overlap syndrome had anti-integrin  $\alpha v\beta 6$  autoantibodies.

### Immunoglobulin G subclasses and isotypes of anti-integrin $\alpha v\beta 6$ antibodies

To further characterize the anti-integrin  $\alpha v\beta 6$  autoantibodies, we used the sera of randomly selected 37 patients with PSC and 16 controls (12 disease controls and 4 HCs). ELISA results showed that 30 (81.1%), 8 (21.6%), 5 (13.5%), and 4 (10.8%) of 37 patients with PSC possessed IgG1, IgG2, IgG3, and IgG4 antibodies, respectively (Fig. 3a). On the other hand, 21 (56.8%), 0 (0%), and 4 (10.8%) patients possessed IgA, IgM, and IgE antibodies, respectively (Fig. 3b). By contrast, controls had neither IgG1, IgG2, IgG3, IgA, IgM, nor IgE antibodies, and only one of the controls had an IgG4 antibody.

### Expression of integrin $\alpha v\beta 6$ in bile duct epithelia

To examine the expression of integrin  $\alpha v\beta 6$  in the bile duct epithelium, we performed immunofluorescence staining using bile duct tissue samples from 10 patients with PSC and five disease controls (Table S1). We detected integrin  $\alpha v\beta 6$  in the bile duct epithelial cells in all patients with PSC and controls (Fig. 4, left and right panels). The staining was abolished by preincubation with recombinant integrin  $\alpha v\beta 6$  (Fig. 4, middle panel), suggesting that this reaction is specific.

### Blocking integrin $\alpha v\beta 6$ -fibronectin binding by IgG from patients with PSC

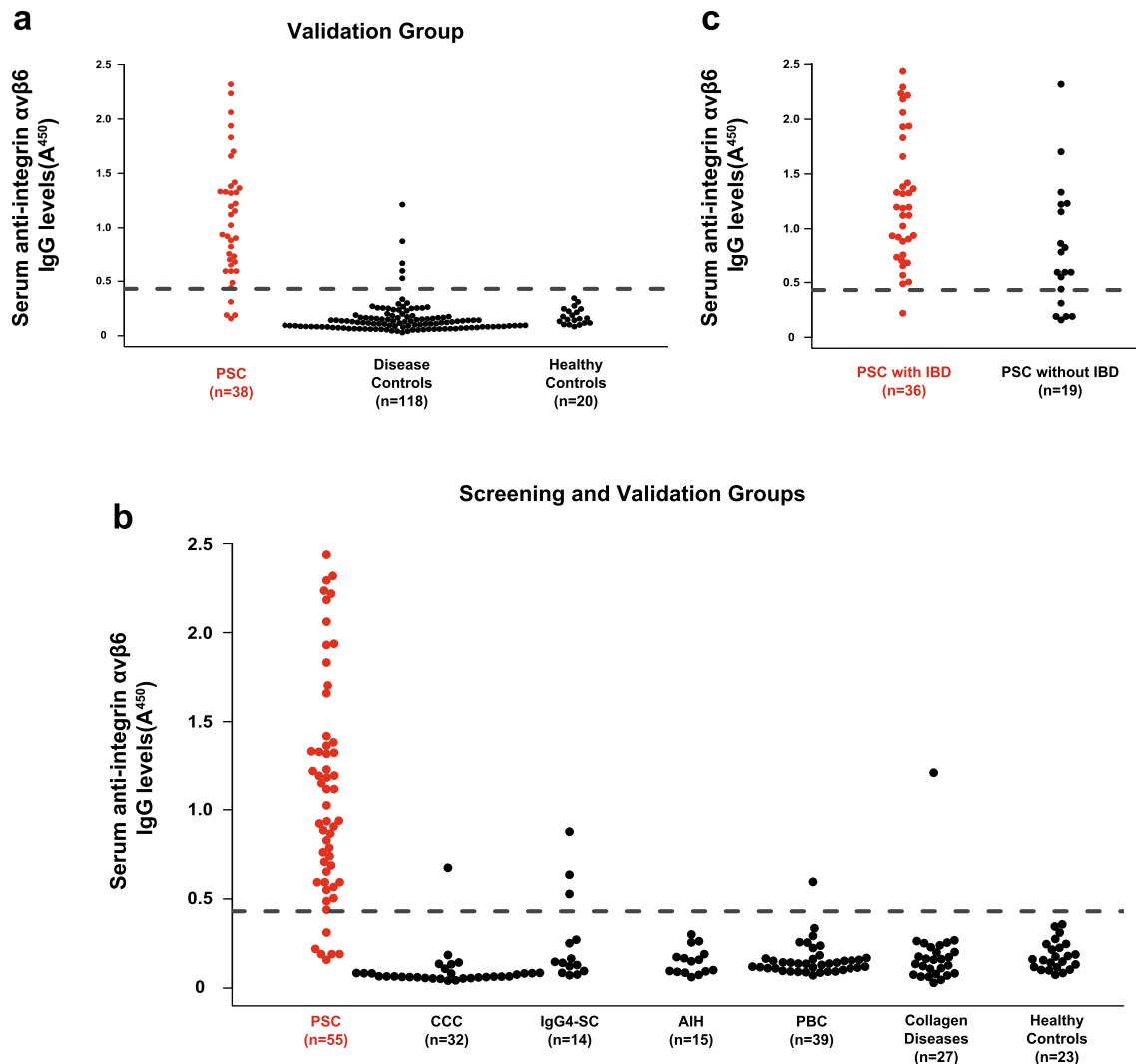
In our previous study, anti-integrin  $\alpha v\beta 6$  autoantibody in patients with UC had an inhibitory effect on integrin  $\alpha v\beta 6$ -fibronectin binding [8]. To investigate whether anti-integrin  $\alpha v\beta 6$  autoantibody in patients with PSC had the same effect, we conducted a solid-phase integrin  $\alpha v\beta 6$  binding assay (Fig. S1a). IgGs of 15/37 (40.5%) patients with PSC with anti-integrin  $\alpha v\beta 6$  autoantibody blocked integrin  $\alpha v\beta 6$ -fibronectin binding (Fig. 5a); the monoclonal antibody 10D5 [24] was used as a positive control (Fig. S1b). Conversely, no control IgG exhibited the blocking activity (Fig. 5a). The blocking activity of patient IgG was dose-dependent (Fig. 5b) and correlated with the patient anti-integrin  $\alpha v\beta 6$  antibody titer ( $r = 0.72$ ,  $P < 0.001$ ; Fig. 5c).

Integrin  $\alpha v\beta 6$  binds to its ligands, such as fibronectin, by recognizing an RGD sequence in fibronectin [25]. Previously, we reported that anti-integrin  $\alpha v\beta 6$  antibodies in patients with UC and RGD peptides compete for binding to the integrin  $\alpha v\beta 6$ , suggesting that anti-integrin  $\alpha v\beta 6$  antibodies in patients with UC exert their blocking effect by targeting the RGD-binding site of integrin  $\alpha v\beta 6$  [8]. We examined whether anti-integrin  $\alpha v\beta 6$  antibodies in patients with PSC also compete with RGD peptides. Results revealed that RGD peptides inhibited the binding of PSC patient IgG to integrin  $\alpha v\beta 6$  in a dose-dependent manner (Fig. 5d). By contrast, no such inhibitory effects were observed with the RGE peptide (control) (Fig. 5e). These findings are similar to those observed in UC [8]. However, the blocking activity of PSC patient IgG tended to be lower than that of UC patient IgG.

### Clinical relevance of the presence of anti-integrin $\alpha v\beta 6$ antibodies

We compared the clinical characteristics of PSC patients with and without anti-integrin  $\alpha v\beta 6$  antibodies (Table 2). The frequency of presence of IBD was significantly higher in patients with anti-integrin  $\alpha v\beta 6$  antibodies than in those without. In addition, ALP, T-bil, and CRP tended to be higher in patients with anti-integrin  $\alpha v\beta 6$  antibodies than in those without, though not significant.

We also examined whether presence of therapeutic intervention affected the positivity of anti-integrin  $\alpha v\beta 6$  antibodies. As a result, two out of three patients (67%) without medication and 46 out of 52 patients (88%) with medication had anti-integrin  $\alpha v\beta 6$  antibodies. There was no significant difference of the positivity of the autoantibody between PSC patients with and without medication ( $P = 0.29$ ). On the other hand, 3/7 patients (43%) with endoscopic treatment of biliary tract and 46/48 patients (96%) without endoscopic treatment had anti-integrin  $\alpha v\beta 6$



**Fig. 2** Detection of anti-integrin  $\alpha v \beta 6$  autoantibodies in sera from patients with PSC. Serum IgG antibodies against integrin  $\alpha v \beta 6$  were quantified by an ELISA. The cutoff OD, defined as the mean plus three standard deviations of the healthy control sera, is indicated by a dashed line. **a** A validation group comprising 38 patients with PSC, 118 disease controls, and 20 healthy controls (Table S1) was examined. **b** Patients and controls from the screening and validation

groups were examined. **c** Patients with PSC with or without IBD were examined. PSC primary sclerosing cholangitis, IgG immunoglobulin G, ELISA enzyme-linked immunosorbent assay, OD optical density, CCC cholangiocellular carcinoma, IgG4-SC IgG4-related sclerosing cholangitis, AIH autoimmune hepatitis, PBC primary biliary cholangitis

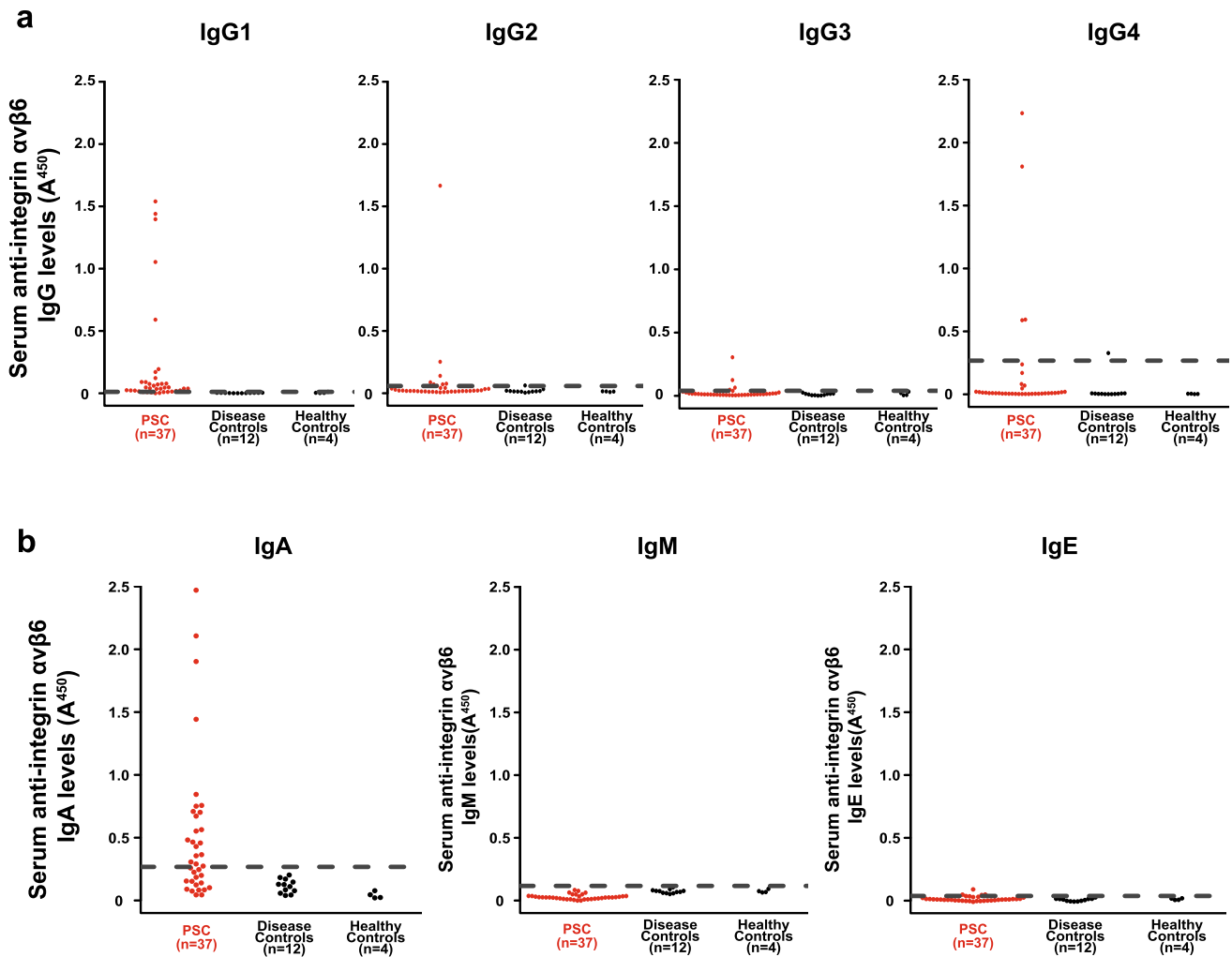
antibodies. Thus, positivity of anti-integrin autoantibodies in patients with endoscopic treatment was significantly lower than that in patients without endoscopic treatment ( $P = 0.001$ ).

## Discussion

This study revealed that most patients with PSC possessed anti-integrin  $\alpha v \beta 6$  autoantibodies. The sensitivity and specificity of anti-integrin  $\alpha v \beta 6$  antibodies for diagnosing PSC were very high. Immunofluorescence staining demonstrated the expression of integrin  $\alpha v \beta 6$  in biliary

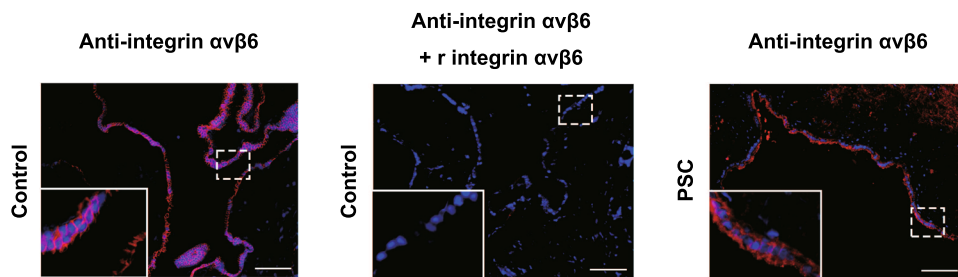
epithelial cells. In addition, IgG from half of the examined patients with PSC inhibited integrin  $\alpha v \beta 6$ -fibronectin binding through the RGD motif.

Since there are no specific diagnostic markers for PSC, the diagnosis is based on non-specific biochemical, imaging, and pathological findings [1, 2, 5]. However, it is often difficult to differentiate PSC from other biliary diseases, such as cholangiocarcinoma, biliary-stone-associated cholangitis, and IgG4-related sclerosing cholangitis [5]. In addition, diagnostic imaging of endoscopic retrograde cholangiopancreatography carries a high risk of complications of acute pancreatitis. Here, we demonstrated that



**Fig. 3** IgG subclasses and isotypes of the anti-integrin  $\alpha v \beta 6$  antibodies in sera from patients with PSC. **a** IgG subclasses of the anti-integrin  $\alpha v \beta 6$  antibodies were quantified by an ELISA. The cutoff OD, defined as the mean plus three standard deviations of the control sera, is indicated by a dashed line. Thirty (81.1%), 8 (21.6%), 5 (13.5%), and 4 (10.8%) of the 37 patients with PSC had IgG1, IgG2, IgG3, and IgG4 antibodies, respectively. Conversely, 1, 1, 0, and 1 of the 16 controls had IgG1, IgG2, IgG3, and IgG4 antibodies,

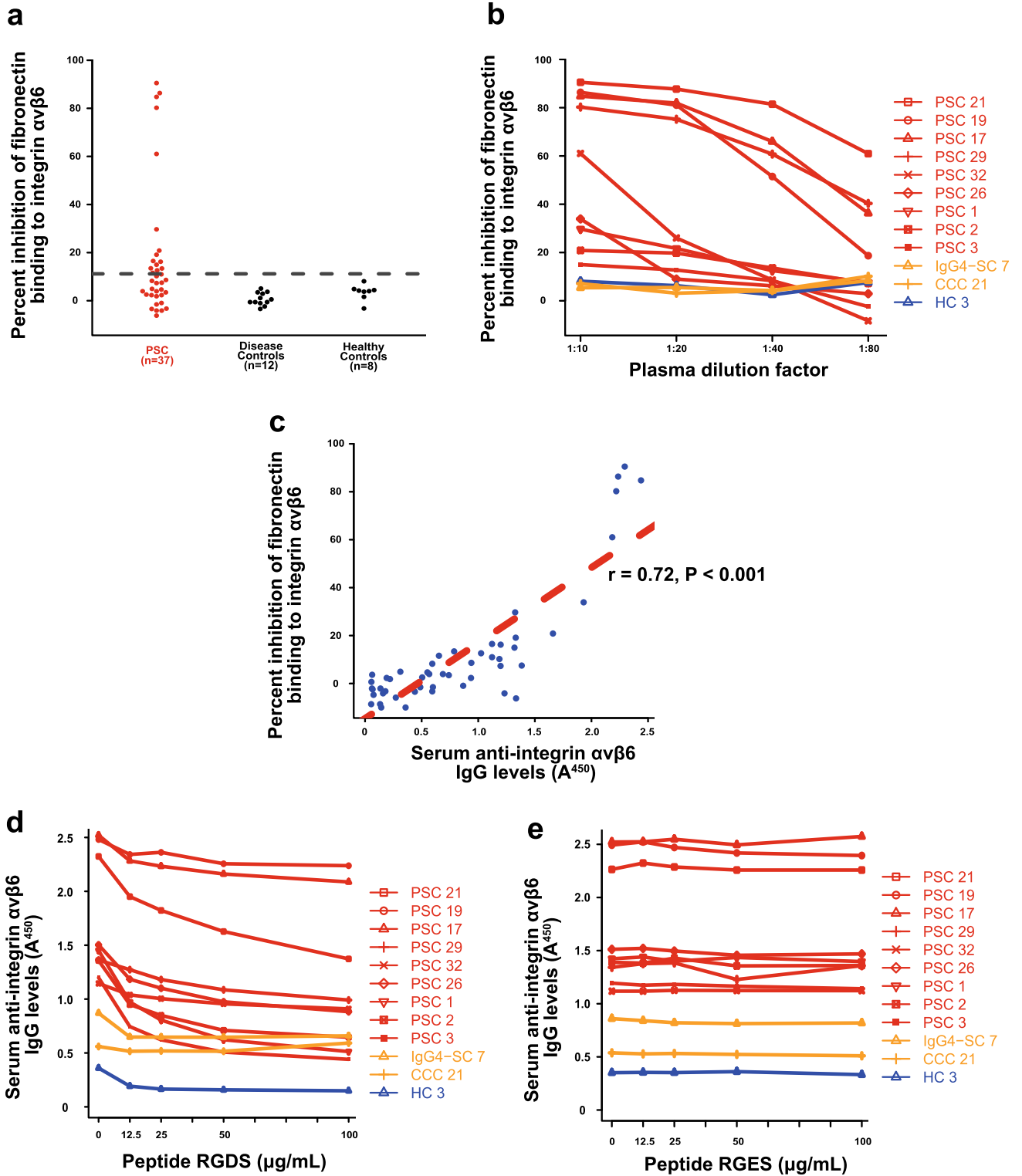
respectively. **b** Isotypes of anti-integrin  $\alpha v \beta 6$  antibodies were quantified by ELISA. Twenty-one (56.8%), 0 (0%), and 4 (10.8%) of the 37 patients with PSC had IgA, IgM, and IgE antibodies against integrin  $\alpha v \beta 6$ , respectively. Conversely, none of the 16 controls had IgA, IgM, or IgE antibodies. *IgG* immunoglobulin G, *PSC* primary sclerosing cholangitis, *ELISA* enzyme-linked immunosorbent assay, *OD* optical density



**Fig. 4** Immunofluorescence staining of integrin  $\alpha v \beta 6$  in human biliary tissue sections. Integrin  $\alpha v \beta 6$  was expressed on biliary epithelial layers of controls (left panel) and patients with PSC (right panel). A specific anti-integrin  $\alpha v \beta 6$  monoclonal antibody (10D5) [24] was used. The staining was abolished by preincubation with recombinant integrin  $\alpha v \beta 6$  (middle panel) but not other integrins

(data not shown). Similar data were obtained from all patients ( $n = 10$ ) and controls ( $n = 5$ ) examined, and representative images are shown. The white boxes on the lower left are magnified images of the dashed line boxes. Scale bars: 100  $\mu m$ . *PSC* primary sclerosing cholangitis





**Fig. 5** Blocking of integrin  $\alpha\text{v}\beta\text{6}$ -fibronectin binding by IgG of patients with PSC. **a** Inhibition of integrin  $\alpha\text{v}\beta\text{6}$  binding to fibronectin by IgG from a patient with PSC was examined using a solid-phase binding assay. The cutoff OD, defined as the mean plus three standard deviations of the control IgG, is indicated by a dashed line. The assay showed that IgGs of 15/37 (40.5%) patients with PSC but none of the control IgGs blocked the binding of integrin  $\alpha\text{v}\beta\text{6}$  to fibronectin. **b** Dose-dependent inhibition of binding of integrin  $\alpha\text{v}\beta\text{6}$  to fibronectin by PSC patient IgG. IgGs of the patients with PSC with the anti-integrin  $\alpha\text{v}\beta\text{6}$  antibody (PSC 21, 19, 17, 29, 32, 26, 1, 2, and 3) inhibited integrin  $\alpha\text{v}\beta\text{6}$ -fibronectin binding in a dose-dependent manner. Conversely, IgGs of controls with the anti-integrin  $\alpha\text{v}\beta\text{6}$  antibody (IgG4-SC 7 and CCC 21) and a healthy control (HC 3) exhibited no blocking activity. **c** Titers of IgG antibodies against integrin  $\alpha\text{v}\beta\text{6}$  were correlated with the blocking activity of integrin  $\alpha\text{v}\beta\text{6}$ -fibronectin binding ( $r = 0.72$ ,  $P < 0.001$ ). **d, e** Peptide RGDS (Arg-Gly-Asp-Ser) (**d**), but not RGES (Arg-Gly-Glu-Ser) (**e**), impaired binding of IgG from patients with PSC to integrin  $\alpha\text{v}\beta\text{6}$  in a dose-dependent manner. We used the RGDS and RGES peptides to represent the RGD and RGE motifs, respectively [29]. *OD* optical density, *IgG* immunoglobulin G, *PSC* primary sclerosing cholangitis, *IgG4-SC* IgG4-related sclerosing cholangitis, *CCC* cholangiocellular carcinoma

**Table 2** Comparison of clinical characteristics between patients with anti-integrin  $\alpha\text{v}\beta\text{6}$  antibody-positive and antibody-negative PSC

	Positive $n = 49$	Negative $n = 6$	$P$ value
Age			0.48
Mean	40.8	45.3	
Median	40	50	
Sex			0.07
Male	36 (73.4%)	2 (33.3%)	
ALP <sup>a</sup> U/L			0.17
Mean	321.5	190.7	
Median	277	232	
T-Bil <sup>b</sup> mg/dl			0.30
Mean	4.8	1.4	
Median	1.7	0.9	
CRP <sup>c</sup> mg/dl			0.22
Mean	1.5	0.4	
Median	0.8	0.1	
IBD			0.02
Presence	34 (69%)	1 (17%)	

*PSC* primary sclerosing cholangitis, *ALP* alkaline phosphatase, *T-Bil* total-bilirubin, *CRP* C-reactive protein, *IBD* inflammatory bowel disease

<sup>a</sup>The normal range of ALP is 38–113 U/L

<sup>b</sup>The normal range of T-Bil is 0.3–1.3 mg/dL

<sup>c</sup>The normal range of CRP is 0–0.2 mg/dL

the anti-integrin  $\alpha\text{v}\beta\text{6}$  antibody is a potential non-invasive diagnostic marker for PSC.

In this study, we found that integrin  $\alpha\text{v}\beta\text{6}$  is expressed in biliary epithelial cells. Recently, Weil et al. reported that a patient with an integrin  $\beta\text{6}$  germline mutation showed lethal cholestatic liver injuries and bloody diarrhea, characteristic clinical features of PSC and UC, respectively [15]. Moreover, Guillot et al. found that integrin  $\alpha\text{v}\beta\text{6}$  is involved in biliary epithelial cell proliferation induced by bile acid-activated macrophages following liver injury in mice [14]. These data suggest that integrin  $\alpha\text{v}\beta\text{6}$  plays an important role in the homeostasis of biliary epithelial cells. In this regard, it is noteworthy that IgGs from patients with PSC have inhibitory effects on integrin  $\alpha\text{v}\beta\text{6}$ -fibronectin binding. Thus, anti-integrin  $\alpha\text{v}\beta\text{6}$  antibodies may play a pathological role in the development of PSC by disrupting the functions of integrin  $\alpha\text{v}\beta\text{6}$  in biliary epithelial cells.

We recently reported that most patients with UC also possess anti-integrin  $\alpha\text{v}\beta\text{6}$  antibodies [8]. Anti-integrin  $\alpha\text{v}\beta\text{6}$  antibodies of patients with PSC or those with UC have similar characteristic features. The predominant subtypes of the antibodies of patients with both PSC and UC are IgG1; IgG of both patients inhibits integrin  $\alpha\text{v}\beta\text{6}$ -fibronectin binding via the RGD motif. Although integrin  $\alpha\text{v}\beta\text{6}$  is present on the surface of both colonic [8] and biliary epithelial cells, the presence of anti-integrin  $\alpha\text{v}\beta\text{6}$  antibodies in patients with both PSC and UC suggests common pathophysiological roles of the antibodies in PSC and UC; for example, disruption of integrin  $\alpha\text{v}\beta\text{6}$ -fibronectin binding results in epithelial cell-basement membrane dissociation. Nonetheless, although PSC is often associated with IBD, the colonic lesions in patients with PSC are different from those in patients with UC. For example, colonic lesions of IBD accompanied by PSC are usually mild and mainly occur in the proximal colon with rectal sparing and backwash ileitis. By contrast, UC invariably affects the distal colon, including the rectum, [21] and thus, IBD with PSC is often named PSC-associated IBD [22, 23]. Moreover, genome-wide association studies have demonstrated that a substantial number of single nucleotide polymorphisms of PSC are not shared by UC, and the presence of IBD in patients with PSC cannot be fully explained by shared genetic risk [28]. If anti-integrin  $\alpha\text{v}\beta\text{6}$  antibodies play pathological roles in PSC or UC, the reason why those antibodies in patients with PSC and UC have different effects is unknown. The antigen epitope of the integrin  $\alpha\text{v}\beta\text{6}$  recognized by anti-integrin  $\alpha\text{v}\beta\text{6}$  antibodies of patients between PSC and UC may be different and induce different effects on different organs: the bile duct and colonic epithelium.

We observed in this study that prevalence of autoantibodies against integrin  $\alpha\text{v}\beta\text{6}$  is different between PSC patients with and without IBD. The reason for this difference is unknown at present. In this regard, however, it may be noted that the titer of anti-integrin  $\alpha\text{v}\beta\text{6}$  antibodies in

PSC patients with IBD is higher than those without IBD (Fig. 2c). Therefore, one possibility is that some PSC patients with IBD who were negative for anti-integrin  $\alpha\text{v}\beta\text{6}$  autoantibodies may have had very low levels of the antibody. Alternatively, some PSC patients without IBD may have other autoantibodies. However, further studies are needed to test these hypotheses.

One thing to be noted is that positivity of anti-integrin autoantibodies in patients who received endoscopic treatment was significantly lower than that in patients without endoscopic treatment. Because the sample size was small, whether the endoscopic treatment has an inhibitory role in the production of anti-integrin autoantibodies needs to be further clarified.

The present study has several limitations. The sample size was relatively small, and the study was limited to Japanese patients. The study outcomes warrant further investigations in patients of other ethnicities, with a large number of patients, to assess the wider application of these results.

Nevertheless, in conclusion, this study revealed for the first time that most patients with PSC possess autoantibodies against integrin  $\alpha\text{v}\beta\text{6}$ . These autoantibodies have a high specificity and sensitivity for PSC diagnosis. A more precise analysis of the characteristics of anti-integrin  $\alpha\text{v}\beta\text{6}$  in patients with PSC and patients with UC is required.

**Supplementary Information** The online version contains supplementary material available at <https://doi.org/10.1007/s00535-023-02006-6>.

**Acknowledgements** We thank the patients and volunteers who provided their sera for this study. We would also like to thank Shino Yamaguchi and Taichi Ito for their valuable technical support and Editage ([www.editage.com](http://www.editage.com)) for English language editing.

**Author contributions** Conceptualization and supervision: HY, TK, MS, TC, HS, and YK. Sample and data collection: HY, TK, KO, MS, SO, TN, SM, YM, MY, HM, YE, AT, KT, and YU. Data analysis: HY and TK. Statistical analysis: NK and HY. Writing—original draft: HY, TK, YN, and MS. Writing—review and editing: YK, SO, NK, HY, TN, SM, YM, MY, KO, TH, HO, YS, SM, TM, AM, YN, YU, NU, TC, and HS.

**Funding** This work was supported by JSPS KAKENHI (1148589), the Agency for Medical Research and Development (AMED) (1074364), and Astellas Pharma, Inc.

#### Declarations

**Conflict of interest** Dr. Masahiro Shiokawa received a research grant from Astellas Pharma.

**Open Access** This article is licensed under a Creative Commons Attribution 4.0 International License, which permits use, sharing, adaptation, distribution and reproduction in any medium or format, as long as you give appropriate credit to the original author(s) and the source, provide a link to the Creative Commons licence, and indicate if changes were made. The images or other third party material in this

article are included in the article's Creative Commons licence, unless indicated otherwise in a credit line to the material. If material is not included in the article's Creative Commons licence and your intended use is not permitted by statutory regulation or exceeds the permitted use, you will need to obtain permission directly from the copyright holder. To view a copy of this licence, visit <http://creativecommons.org/licenses/by/4.0/>.

## References

- Lazaridis KN, LaRusso NF. Primary sclerosing cholangitis. *N Engl J Med*. 2016;375:1161–70.
- Dyson JK, Beuers U, Jones DEJ, et al. Primary sclerosing cholangitis. *The Lancet*. 2018;391:2547–59.
- Vesterhus M, Karlsen TH. Emerging therapies in primary sclerosing cholangitis: pathophysiological basis and clinical opportunities. *J Gastroenterol*. 2020;55:588–614.
- Bakhshi Z, Hilscher MB, Gores GJ, et al. An update on primary sclerosing cholangitis epidemiology, outcomes and quantification of alkaline phosphatase variability in a population-based cohort. *J Gastroenterol*. 2020;55:523–32.
- Isayama H, Tazuma S, Kokudo N, et al. Clinical guidelines for primary sclerosing cholangitis 2017. *J Gastroenterol*. 2018;53:1006–34.
- Karrar A, Broome U, Sodergren T, et al. Biliary epithelial cell antibodies link adaptive and innate immune responses in primary sclerosing cholangitis. *Gastroenterology*. 2007;132:1504–14.
- Xu B, Broome U, Ericzon B-G, et al. High frequency of autoantibodies in patients with primary sclerosing cholangitis that bind biliary epithelial cells and induce expression of CD44 and production of interleukin 6. *Gut*. 2002;51:120–7.
- Kuwada T, Shiokawa M, Kodama Y, et al. Identification of an anti-integrin  $\alpha\text{v}\beta\text{6}$  autoantibody in patients with ulcerative colitis. *Gastroenterology*. 2021;160(2383–94): e21.
- Uzzan M, Martin JC, Mesin L, et al. Ulcerative colitis is characterized by a plasmablast-skewed humoral response associated with disease activity. *Nat Med*. 2022;28:766–79.
- Rydell N, Ekoff H, Hellstrom PM, et al. Measurement of serum IgG anti-integrin  $\alpha\text{v}\beta\text{6}$  autoantibodies is a promising tool in the diagnosis of ulcerative colitis. *J Clin Med*. 2022;11:1881.
- Hynes R. Integrins: versatility, modulation, and signaling in cell adhesion. *Cell*. 1992;69:11–25.
- Breuss JM, Gallo J, DeLisser HM, et al. Expression of the  $\beta\text{6}$  integrin subunit in development, neoplasia and tissue repair suggests a role in epithelial remodeling. *J Cell Sci*. 1995;108:2241–51.
- Breuss JM, Gillett N, Lu L, et al. Restricted distribution of integrin  $\beta\text{6}$  mRNA in primate epithelial tissues. *J Histochem Cytochem*. 1993;41:1521–7.
- Guillot A, Guerri L, Feng D, et al. Bile acid-activated macrophages promote biliary epithelial cell proliferation through integrin  $\alpha\text{v}\beta\text{6}$  upregulation following liver injury. *J Clin Invest*. 2021;131:e132305.
- Weil P, Rvd Bruck, Ziegenhals T, et al.  $\beta\text{6}$  integrinosis: a new lethal autosomal recessive ITGB6 disorder leading to impaired conformational transitions of the  $\alpha\text{v}\beta\text{6}$  integrin receptor. *Gut*. 2020;69:1359–61.
- Ludwig DR, Anderson MA, Itani M, et al. Secondary sclerosing cholangitis: mimics of primary sclerosing cholangitis. *Abdom Radiol (NY)*. 2023;48:151–65.
- Kornbluth A, Sachar DB, Practice Parameters Committee of the American College of G. Ulcerative colitis practice guidelines in adults: American college of gastroenterology practice parameters committee. *Am J Gastroenterol*. 2010;105:501–23 (**quiz 24**).

18. Maaser C, Sturm A, Vavricka SR, et al. ECCO-ESGAR guideline for diagnostic assessment in IBD part 1: initial diagnosis, monitoring of known IBD, detection of complications. *J Crohns Colitis*. 2019;13:144–64.
19. Loftus EV Jr, Harewood GC, Loftus CG, et al. PSC-IBD: a unique form of inflammatory bowel disease associated with primary sclerosing cholangitis. *Gut*. 2005;54:91–6.
20. Boonstra K, van Erpecum KJ, van Nieuwkerk KM, et al. Primary sclerosing cholangitis is associated with a distinct phenotype of inflammatory bowel disease. *Inflamm Bowel Dis*. 2012;18:2270–6.
21. Krugliak Cleveland N, Rubin DT, Hart J, et al. Patients with ulcerative colitis and primary sclerosing cholangitis frequently have subclinical inflammation in the proximal colon. *Clin Gastroenterol Hepatol*. 2018;16:68–74.
22. Palmela C, Peerani F, Castaneda D, et al. Inflammatory Bowel disease and primary sclerosing cholangitis: a review of the phenotype and associated specific features. *Gut Liver*. 2018;12:17–29.
23. Gulamhusein AF, Eaton JE, Tabibian JH, et al. Duration of inflammatory bowel disease is associated with increased risk of cholangiocarcinoma in patients with primary sclerosing cholangitis and IBD. *Am J Gastroenterol*. 2016;111:705–11.
24. Weinreb PH, Simon KJ, Rayhorn P, et al. Function-blocking integrin  $\alpha$ v $\beta$ 6 monoclonal antibodies: distinct ligand-mimetic and nonligand-mimetic classes. *J Biol Chem*. 2004;279:17875–87.
25. Zhang K, Chen J. The regulation of integrin function by divalent cations. *Cell Adh Migr*. 2012;6:20–9.
26. Takagi J, Petre BM, Walz T, et al. Global conformational rearrangements in integrin extracellular domains in outside-in and inside-out signaling. *Cell*. 2002;110:599–611.
27. Shiokawa M, Kodama Y, Sekiguchi K, et al. Laminin 511 is a target antigen in autoimmune pancreatitis. *Sci Transl Med*. 2018;10:eaq0997.
28. Ji SG, Juran BD, Mucha S, et al. Genome-wide association study of primary sclerosing cholangitis identifies new risk loci and quantifies the genetic relationship with inflammatory bowel disease. *Nat Genet*. 2017;49:269–73.
29. Parise LV, Helgerson SL, Steiner B, et al. Synthetic peptides derived from fibrinogen and fibronectin change the conformation of purified platelet glycoprotein IIb-IIIa. *J Biol Chem*. 1987;262:12597–602.

**Publisher's Note** Springer Nature remains neutral with regard to jurisdictional claims in published maps and institutional affiliations.