

*H. Hara*

Vol. 36, 1966

No. 1

# THE REVIEW OF PHYSICAL CHEMISTRY OF JAPAN

Founded in 1926

## CONTENTS

<b>Jiro Osugi, Kiyoshi Shimizu and Hideto Takizawa :</b> Effect of Pressure on the Dissociation of Electrolytic Solution (III) Electrical Conductivity of Hexam- mine Cobalt (III) Sulphate at High Pressures .....	1
<b>Jiro Osugi, Tetuo Mizukami and Tadafumi Tachibana :</b> The Effect of Pressure on the Keto-enol Equilibria of Acetone and Cyclohexanone .....	8
<b>Jiro Osugi and Kimihiko Hara :</b> Effect of Pressure on the Electrical Conductivity of Organic Substances (I) Pyrolyzed Polyacrylonitrile .....	20
<b>Jiro Osugi and Kimihiko Hara :</b> High-pressure Melting in Polyethylene .....	28
<b>Jiro Osugi, Ryosuke Namikawa and Yoshiyuki Tanaka :</b> Chemical Reaction at High Temperature (III) Reaction of Silicon and Phosphorus at High Tempera- ture and High Pressure .....	35
<b>Kiyoshi Kitamura :</b> Inactivation of Enzymes under High Pressure (II) Inactivation of Bacterial $\alpha$ -Proteinase and $\beta$ -Amylase of Barley under High Pressure .....	44
<b>Jiro Osugi and Kiyoshi Shimizu, Yoshiyuki Tanaka and Kosaku Kadono :</b> Pre- paration and Chemical Properties of Cubic Boron Arsenide, BAs .....	54

THE PHYSICO-CHEMICAL SOCIETY OF JAPAN

# THE REVIEW OF PHYSICAL CHEMISTRY OF JAPAN

(Butsuri-Kagaku no Shinpo)

**President:** Shinkichi Horiba, Professor Emeritus, M. J. A.

**Members of Council:**

Azuma Okuda (Chief)

J. Osugi	Y. Kachi	I. Tsujikawa
K. Kodera	H. Takagi	A. Kaji
R. Goto	H. Hatano	A. Saika
T. Yamamoto	W. Jono	
T. Fujinaga	R. Goto	
S. Tanaka	E. Suito	

**Board of Editors:**

J. Osugi (Chief)	<i>Kyoto University</i>
W. Jono (Associate)	<i>University of Kobe</i>
R. Goto ( " )	<i>Kyoto University</i>
E. Suito ( " )	<i>Kyoto University</i>
S. Shida	<i>Tokyo Institute of Technology</i>
T. Kitagawa	<i>Yokohama University</i>
M. Tamura	<i>Kyoto University</i>
H. Matsuyama	<i>Doshisha University</i>
T. Makita	<i>Kyoto Technical University</i>
K. Suzuki	<i>Ritsumeikan University</i>
K. Hirota	<i>University of Osaka</i>
S. Seki	<i>University of Osaka</i>
T. Ishino	<i>Himeji Institute of Technology</i>
T. Imoto	<i>Municipal University of Osaka</i>
R. Fujishiro	<i>Municipal University of Osaka</i>
O. Toyama	<i>Prefectural University of Osaka</i>
S. Ono	<i>Prefectural University of Osaka</i>
S. Tsuchibashi	<i>University of Kobe</i>
S. Hasegawa	<i>Okayama University</i>
H. Togawa	<i>Doshisha University</i>

**Secretary:**

K. Shimizu	M. Sato
T. Fujiwara	

October 30, 1966

**Communications to the Editor** should be addressed to Board of Editors, The Physico-Chemical Society of Japan, College of Science, Kyoto University, Kyoto, Japan.

**Business Correspondences** should be addressed to: Secretary, The Physico-Chemical Society of Japan, College of Science, Kyoto University, Kyoto, Japan.

**Purchase Order** should be addressed to: Maruzen Co., Ltd., Nihonbashi, Chuo-ku, Tokyo, Japan.

Published by

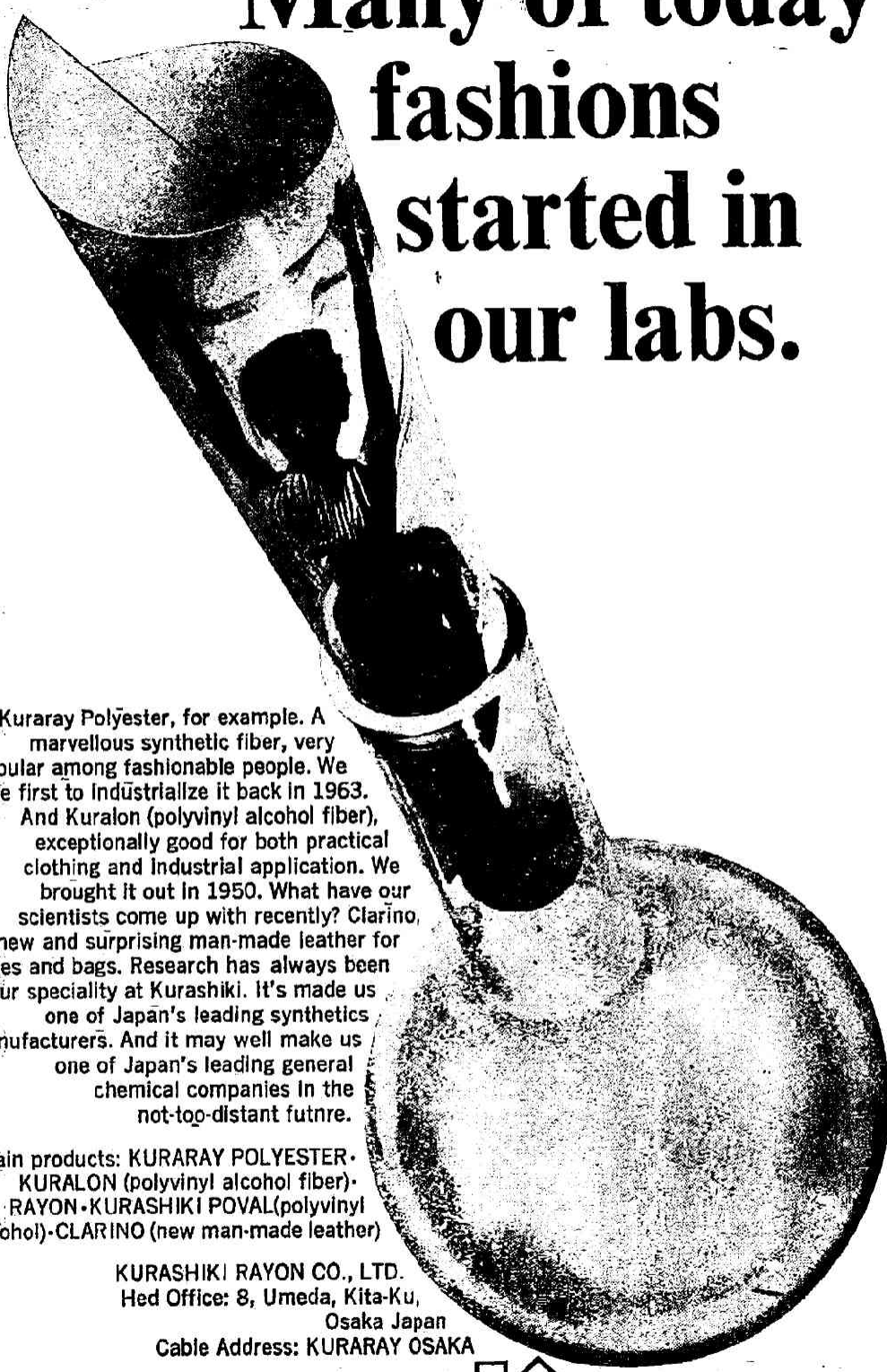
**THE PHYSICO-CHEMICAL SOCIETY OF JAPAN**

(Nippon Butsuri-Kagaku Kenkyu Kai)

College of Science, Kyoto University, Kyoto, Japan

Printed by KAWAKITA INSATSU CO., Kyoto, Japan

# Many of today's fashions started in our labs.



Kuraray Polyester, for example. A marvellous synthetic fiber, very popular among fashionable people. We were first to industrialize it back in 1963. And Kuralon (polyvinyl alcohol fiber), exceptionally good for both practical clothing and industrial application. We brought it out in 1950. What have our scientists come up with recently? Clarino, a new and surprising man-made leather for shoes and bags. Research has always been our specialty at Kurashiki. It's made us one of Japan's leading synthetics manufacturers. And it may well make us one of Japan's leading general chemical companies in the not-too-distant future.

Main products: KURARAY POLYESTER·  
KURALON (polyvinyl alcohol fiber)·  
RAYON·KURASHIKI POVAL (polyvinyl alcohol)·CLARINO (new man-made leather)

KURASHIKI RAYON CO., LTD.  
Head Office: 8, Umeda, Kita-Ku,  
Osaka Japan  
Cable Address: KURARAY OSAKA



# The World Knows...



... how the chemical know-how of Toyo Koatsu is contributing to the increase of agricultural production, the modernization of industries and the betterment of people's daily lives. Toyo Koatsu techniques are licensed in and products have been exported to more than 30 countries.

These include urea, ammonium sulphate, synthetic resins and plastics, and other chemicals.



**TOYO KOATSU**  
**Industries, Inc.**

Mitsui Daini Bikkai, 2-4-chome, Nihonbashi Hongoku-Cho,  
Chuo-ku, Tokyo Cable address: "TOATSUIND TOKYO"



# NISSO HI-CHLON

(Ingredient : Calcium Hypochlorite 70% min, granular & tablet)

- Sodium Cyanide
- Sodium Hydrosulphite
- TDI (Tolylene Diisocyanate)
- PPG (Polypropylene Glycol)
- Sulfoxazole (Sulphafurazole)
- Benzoyl Peroxide (21-22%)



Manufacturer & Exporter of Chemicals

**NIPPON SODA CO., LTD.**

Head Office : Otemachi, Tokyo, Japan

Cable Address : "SODANIPPON" TOKYO



**Now Ready For Use : The Tri-band ESR**

# **JES-3BS ESR**

**.... with Unique Linear Field Sweep Unit!**

The JES-3BS is a new versatile ESR instrument with excellent features:—

Super Sensitivity

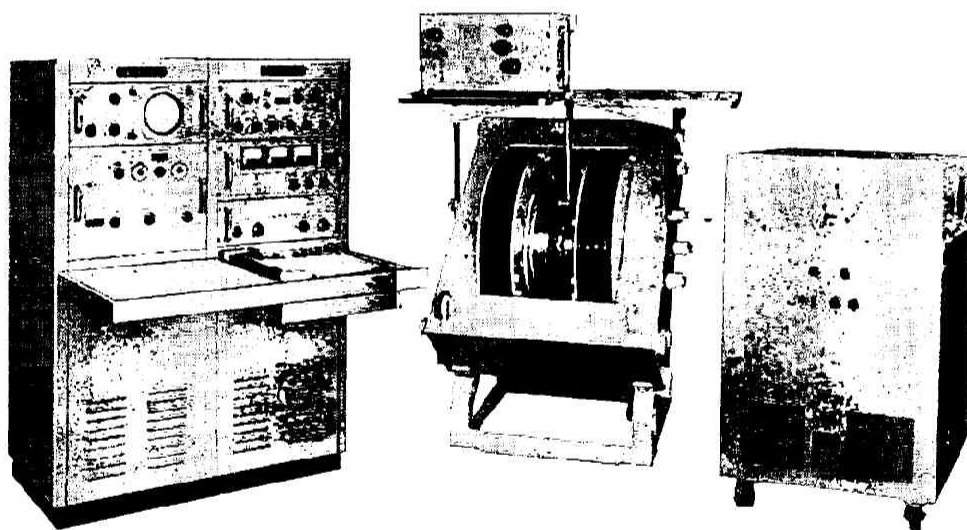
Ultra Resolution

Easy Operation

Valuable Attachments

Tri-Measurement at X, K & Q Bands

The JES-3BS which is provided with a unique low-impedance magnet, a direct read-off circuit of the magnetic field and a linear field sweep method has the following records.



● Specifications (at X-Band measurement)

Detection Sensitivity....  $1 \times 10^{11}$  spin/gauss

(100kc modulation)

$1 \times 10^{12}$  spin/gauss

(80c/s modulation)

Resolution.....  $1 \times 10^{-5}$  or more

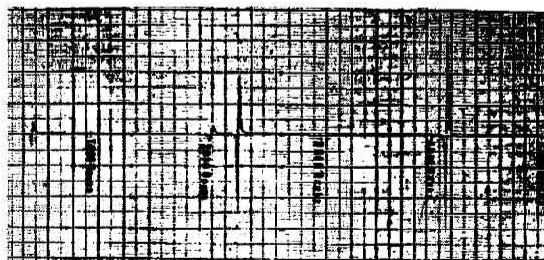
Standard Frequency.... 9,400 Mc (X-band)

Cavity Resonator..... TE<sub>011</sub> (cylinder)

Versatile type

Variable Range ..... 500~13,000 gauss

of Mag. Field (18,000 gauss with the auxiliary pole piece)



ESR Signal of Cr<sup>3+</sup> in single crystal of ruby

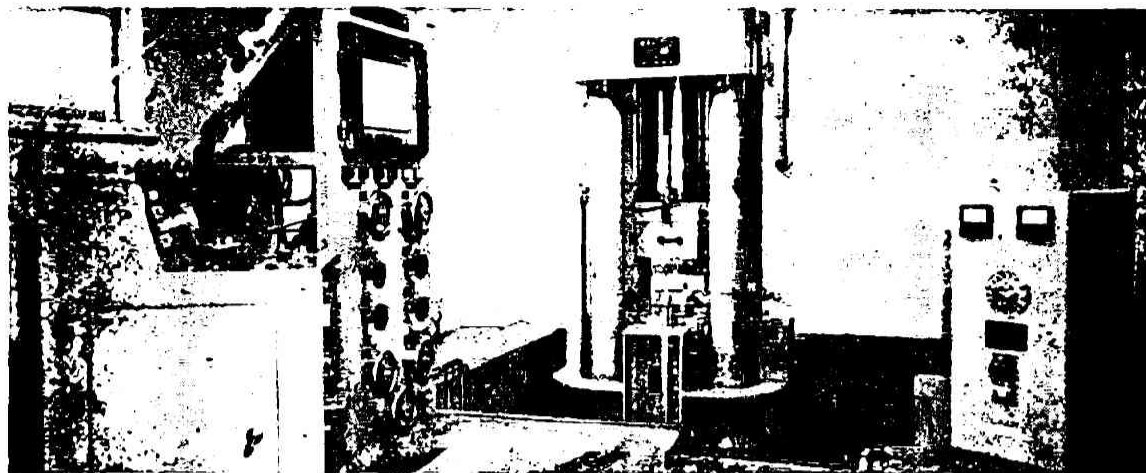
N.B.: Absorption signals distinctly appear in a wide range by the linear field sweep unit.

**JAPAN ELECTRON OPTICS LABORATORY CO., LTD.**

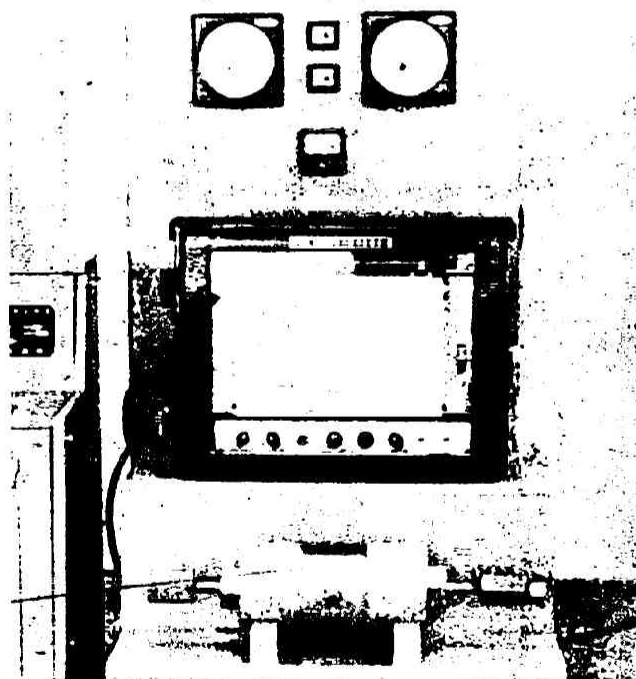
New Tokyo Bldg., Tokyo, Japan



# VERY HIGH PRESSURE EQUIPMENT



"DIA" Equipment, Cubic Type Very High Pressure Equipment, Anvil Face 10mmX10mm, Total Weight 8 ton



S.H.P. Measurement Gauge, Electrical Resistance Strain Gauge Type,  
Calibrated with the Master Free-Piston Gauge in Kobe Steel.  
(Japanese PAT. No.294153)

Liquid Pressure up to 15,000kg/cm<sup>2</sup>  
Solid Pressure up to 100,000kg/cm<sup>2</sup>  
for Production and Research Purposes  
Super High Pressure Generator Unit  
Super High Pressure Reaction Vessel  
Super High Pressure Measurement Gauge  
Super High Pressure Equipment

#### Other Major Products :

Fertilizer Plant, Cement Plant, Oxygen Plant, Rolled Steel Products, Steel Castings & Forgings, General Industrial Machinery, Light Metal Alloy Castings & Forgings, Titanium Products, Arc Welding Electrodes, Small Tools, Non Ferrous Metals & Their Products, Sugar Cane Milling Plant and others.



## KOBE STEEL

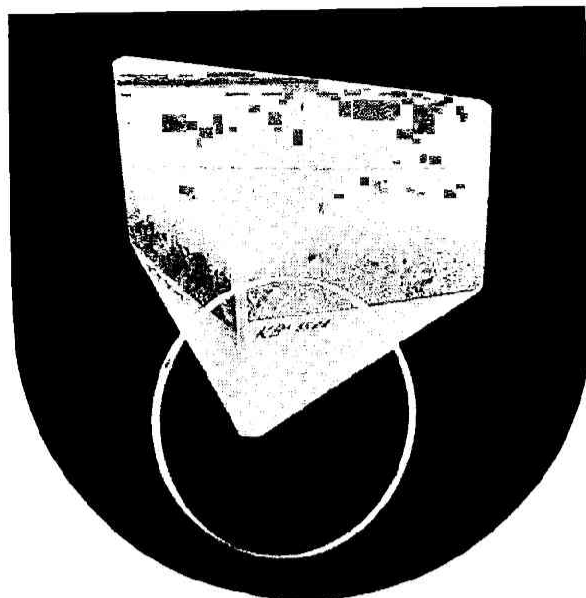
**MACHINERY DIVISION**

HEAD OFFICE : 36, 1-chome, Wakino-hama-cho, Fukiai-ku, Kobe, Japan

OVERSEAS OFFICES : New York, Dusseldorf, New Delhi

TOKYO OFFICE : Yanagiya Bldg., No. 2-1, Tori 2-Chome, Chuo-ku, Tokyo, Japan





Single crystals of HORIBA INSTRUMENTS, INC., offered as complete products ready to use which are free from impurity absorption, have acquired worldwide reputations.

Our scintillators, such as NaI (Tl), CsI (Tl) or  $\text{CaI}_2$  are also credited and used internationally by the nuclear scientists, for the established qualities.

	NaCl	KCl	KBr	KI	LiF	AgCl	KRS-5*	KRS-6*	CsI
Limit of transparency (microns)	~15	~21	~27	~31	~6	~30	~40	~34	~70
Refractive index :	1.555	1.498	1.559	1.667	1.394	2.071	2.629	2.336	1.987
Solubility:**	35.7	28.5	53.5	127.5	0.27	$8.9 \times 10^{-5}$	0.02	0.32	44
Specific gravity: $\text{gr/cm}^3$	2.16	1.59	2.75	3.13	2.64	5.56	7.2	7.19	4.53
Melting point: $^{\circ}\text{C}$	801	776	730	680	843	455	415	424	621
Maximum diameter: mm	120	120	120	120	100	60	60	60	60
Maximum height: mm	100	100	100	70	60	100	60	100	100

\* KRS-5 is a compound single crystal of TlI and TlBr, and KRS-6 is a compound single crystal of TlCl and TlBr.

\*\* g/100 gr water at normal temperature.



# HORIBA

INSTRUMENTS, INC.

**Head office & Factory :**  
Nakagawara Miyano Higashi-machi,  
Kissyojin, Minami-ku, Kyoto  
Tel : 37-8121

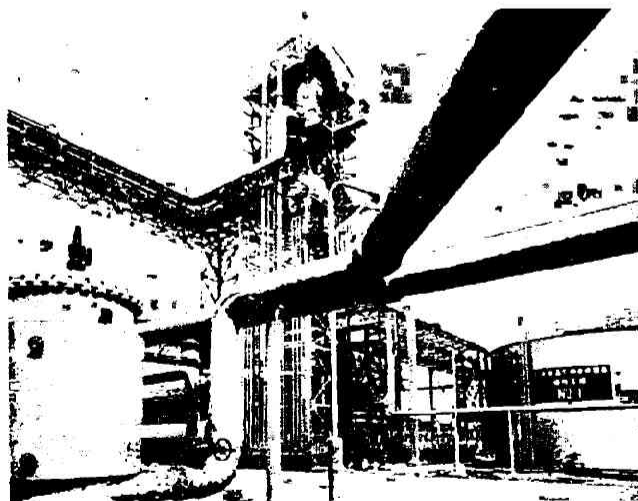
**Tokyo branch office :**  
No. 2-10, Nishihatchobori, Chuo-ku,  
Tokyo Tel : 552-7661

## PRODUCTS FOR TODAY ——— PRODUCTS FOR TOMORROW

KANEGAFUCHI now serves more than 100 industries varying from food to feed, soaps to textiles, electric wires to plastics.

KANEGAFUCHI's variety of products include industrial chemicals, polymers, oil & fat products and fermentation products. Such diversified operation ranks KANEGAFUCHI a unique position in the industry.

KANEGAFUCHI's research activities which enabled successful achievement of today's products are continually producing a flow of new products to meet the challenge of tomorrow



### PRINCIPAL PRODUCTS :

- KANEVINYL (PVC & copolymer, PVC compound)
- KANE ACE-S (ABS resin)
- KANE ACE-B (PVC modifier)
- KANE PEARL (expandable polystyrene beads)
- KANEKALON (modacrylic fiber)
- Electric wires & cables
- Caustic soda, Hydrochloric acid, KANECHLOR (transformer oil, heat transfer medium), Butanol, Acetone
- Bakery yeast, RNP (ribonucleo-protein), MIKAMY-Feed (animal feed additives)
- Margarine, Shortening oil, Soap, Glycerine

**KANEGAFUCHI CHEMICAL INDUSTRY CO, LTD.**

14, 2-chome, Awazi-machi, Higashi-ku, Osaka, Japan

Cable address: CHEMIKANE

## ASAHI CHEMICAL INDUSTRY CO., LTD.

Capital: ¥15,000,000,000

President: KAGAYAKI MIYAZAKI

Head Office: 25, 1-chome, Dojima-hamadori, Kita-ku Osaka, Japan

Tokyo Office: 12, 1-chome, Yurakucho, Chiyoda-ku Tokyo, Japan

Other Branch Offices: Nobeoka, Fuji, Fukuoka, Sapporo, Nagoya,  
Fukui, Kanazawa, New York

Plants: Nobeoka, Fuji, Kawasaki, Sakanoichi, Wakayama

Laboratories: Tokyo (Technical Research Laboratory)  
Takatsuki (Textile Research Laboratory)

Asahi's history dates as far back as 1923 when the late Mr. Jun Noguchi, who was the first president of the company, erected a synthetic ammonia plant in Nobeoka, present site of the company's major plants. This is a memorable plant in that the first commercial production of synthetic ammonia in the world by the Casale process was successfully started at this plant.

Thereafter Asahi's production activity continued to expand, with the exception of the war years, into great many fields. Using ample electric power from its own power plants and standing on the firmly established basis that primary raw materials are available within the company, Asahi has been producing chemical fibers, synthetic resin, explosives, chemical fertilizers, chemical seasoning, industrial nitrocellulose and several scores of chemicals of ammonia, soda and chlorine derivatives.

This fact points up to Asahi's special feature as a chemical company. Asahi ranks first in the production of viscose rayon in Japan and its cuprammonium rayon capacity is largest in the world. Using acrylonitrile monomer produced by Sohio process at its Kawasaki plant, Asahi produces polyacrylic fiber "Cashimilon" by its own process. Production acrylonitrile monomer and of polyacrylic fiber is also the largest in

Japan. Asahi's chemical seasoning (monosodium glutamate) Asahi Aji, ranks second in output of similar chemical seasonings. Sun-Nitro, Asahi's unique chemical fertilizer, is building up for itself a spectacular sales. Asahi's industrial nitrocellulose and electrolytic soda production is the largest in Japan. Asahi is also at the top in production volume of all the explosives manufacturers in Japan. Recently Asahi launched into three new fields of operation, i.e. nylon 6, synthetic rubber polybutadiene "ASADENE" and new building material "Silikaltsuit".

At present, Asahi's products are exported to 50 different countries. Export of the process is also making headway. Worthy of mention in this connection is the export of viscose rayon manufacturing techniques to the Baroda Rayon Corporation, India and Dawood Industries Limited, Pakistan, and of polyacrylic fiber manufacturing techniques to ANIC S.p.A., Italy. Through all these activities, the excellence of Asahi's techniques is highly evaluated.

Asahi now has many powerful affiliates, including Asahi-Dow Limited and Shin Nihon Chemical Industry Co., Ltd. and is proceeding on the road to further growth as a multiple-purpose chemical company.