

*Kimikazu Ise* No. 2

Vol. 48, 1978

# THE REVIEW OF PHYSICAL CHEMISTRY OF JAPAN

Founded in 1926

## CONTENTS

**Masaru Hongo** : Viscosity of Argon and of Argon-Ammonia Mixtures under Pressures .....63

**Etsuko Inada** : The Effect of Pressure on the Walden Products of Alkali Iodides in Acetone .....72

**Masatake Katayama** : Layer Growth of CdSb Phase in the Cd-Sb Diffusion Couple at High Pressure.....84

**Masatake Katayama** : Electrical Measurement of ZuSb and CdSb Phases in the Diffusion Zone at High Pressure.....96

**Hisayuki Inoue** : The Reaction of Nitrile with  $\alpha$ -Hydrogens at High Pressure II, Pressure Effects on the Iminoether Formation and Deuterium-Hydrogen Exchange Reaction of Phenylacetonitrile in Methanol .....105

**Akira Otani** : Explosion Reaction of Olefins .....115

# THE REVIEW OF PHYSICAL CHEMISTRY OF JAPAN

(Butsuri-Kagaku no Shinpo)

Found in 1926

**President :** Wasaburo Jono

**Members of Council :**

Michio Okamoto (Chief)

Jiro Osugi

Ryozo Goto

Renpei Goto

Eiji Suito

Hiroyuki Hatano

**Board of Editors :**

J. Osugi (Chief) *Kyoto University*

R. Goto (Associate) *Kyoto Sangyo University*

E. Suito ( " ) *Matsuru Technical College*

S. Shida *Yokohama University*

H. Teranishi *Kyoto Technical University*

K. Suzuki *Ritsumeikan University*

K. Kuwata *University of Osaka*

S. Seki *University of Osaka*

R. Fujishiro *Osaka City University*

T. Hayakawa *Prefectural University of Osaka*

Y. Kubokawa *Prefectural University of Osaka*

S. Tsuchihashi *Osaka Institute of Technology*

T. Makita *Kobe University*

K. Monobe *Okayama University*

K. Shimizu *Doshisha University*

H. Togawa *Baika Women's College*

**Secretary :**

M. Sasaki

K. Hara

M. Nakahara

Y. Kanou

February 10, 1978

**Communications to the Editor** should be addressed to Board of Editors, The Physico-Chemical Society of Japan, Faculty of Science, Kyoto University, Kyoto, Japan.

**Business Correspondences** should be addressed to: Secretary, The Physico-Chemical Society of Japan, Faculty of Science, Kyoto University, Kyoto, Japan.

**Purchase Order** should be addressed to: Maruzen Co., Ltd., Nihonbashi, Chuo-ku, Tokyo, Japan.

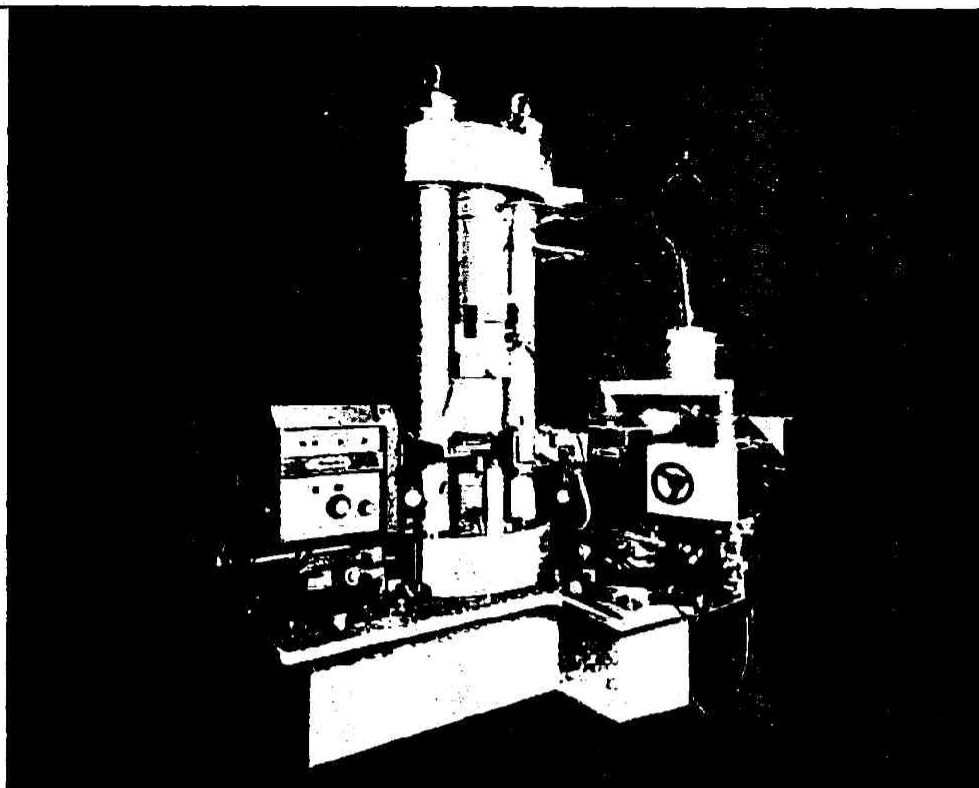
Published by

**THE PHYSICO-CHEMICAL SOCIETY OF JAPAN**

(Nippon Butsuri-Kagaku Kenkyu Kai)

Faculty of Science, Kyoto University, Kyoto, Japan

Printed by KAWAKITA PRINTING CO., LTD., Kyoto, Japan



# KS TYPE DIA APPARATUS

The super-high pressure generator developed by Kobe Steel, Ltd. is called the KS type DIA apparatus. The apparatus is used for the research on the solid state physics, synthesizing new substances, producing man-made diamonds and various other experiments in the field of high pressure on solid.

Model No.	DIA-6	DIA-10	DIA-15	DIA-20
Working pressure (kilobars)	100	80	80	60
Working temperature (°C) (under the pressure above)	1,500	1,500	1,500	1,500
Dimensions of sample holder (mm)	6×6×6	10×10×10	15×15×15	20×20×20
Capacity of high pressure press (metric ton)	250	600	1,200	2,500
Input (not including power for heating)	750W 200V 50 or 60Hz	1,500W 200V 50 or 60Hz	1,500W 200V 50 or 60Hz	1,500W 200V 50 or 60Hz
Operation period (minute/cycle)	15	20	25	30


**KOBE STEEL**  
**MACHINERY & ENGINEERING DIVISION**

- KOBE OFFICE 3-18, 1-chome, Wakinohama-cho, Fukiai-ku, Japan Phone: Kobe (078) 251-1551
- TOKYO OFFICE Tekko Bldg., 8-2, 1-chome, Marunouchi, Chiyoda-ku, Tokyo, Japan Phone: Tokyo (03) 218-7111

# The Review of Physical Chemistry of Japan

Vol. 48, 1978

## CONTENTS

### No. 1

<b>Masaru Hongo and Hiroji Iwasaki</b> : Viscosity of Hydrogen and of Hydrogen-Ammonia Mixtures under Pressures .....	1
<b>Toshiharu Takagi</b> : Ultrasonic Velocity in Binary Mixtures under High Pressures and Their Thermodynamic Properties I, Binary Mixture for Nitrobenzene-Aniline .....	10
<b>Toshiharu Takagi</b> : Ultrasonic Velocity in Binary Mixtures under High Pressures and Their Thermodynamic Properties II, Binary Mixtures for Benzene-Toluene and Benzene- <i>o</i> -Xylene.....	17
<b>Izumi Ishihara</b> : The Effect of Pressure on the Complex Formation of Cobalt (II) and Nickel (II) Bromides in Acetone Solution.....	27
<b>Hisayuki Inoue, Kimihiko Hara and Jiro Osugi</b> : Effect of Pressure on Ionization of Triethylamine in Methanol .....	44
<b>Sefton D. Hamann</b> : The State of Ionic Micelles at High Pressures .....	60

### No. 2

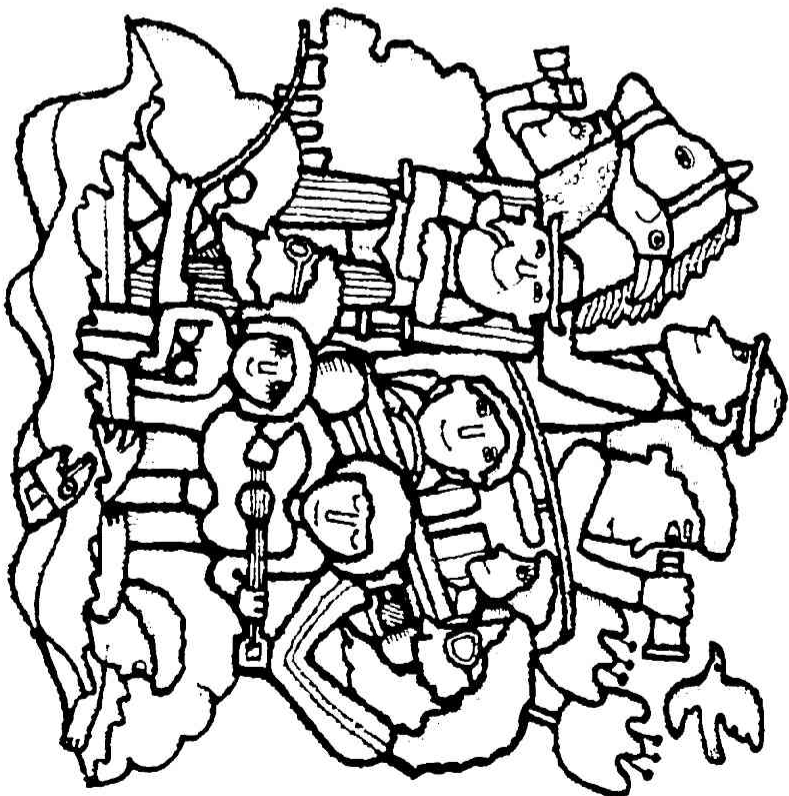
<b>Masaru Hongo</b> : Viscosity of Argon and of Argon-Ammonia Mixtures under Pressures .....	63
<b>Etsuko Inada</b> : The Effect of Pressure on the Walden Products of Alkali Iodides in Acetone .....	72
<b>Masatake Katayama</b> : Layer Growth of CdSb Phase in the Cd-Sb Diffusion Couple at High Pressure.....	84
<b>Masatake Katayama</b> : Electrical Measurement of ZuSb and CdSb Phases in the Diffusion Zone at High Pressure.....	96
<b>Hisayuki Inoue</b> : The Reaction of Nitrile with $\alpha$ -Hydrogens at High Pressure II, Pressure Effects on the Iminoether Formation and Deuterium-Hydrogen Exchange Reaction of Phenylacetonitrile in Methanol.....	105
<b>Akira Otani</b> : Explosion Reaction of Olefins .....	115

*Published by*

**THE PHYSICO-CHEMICAL SOCIETY OF JAPAN**  
*Faculty of Science, Kyoto University, Kyoto, Japan*

**We serve.....  
Many peoples,  
Many lands,  
Many ways.**

**SYNTHETIC RESINS & PLASTICS  
INDUSTRIAL CHEMICALS  
FERTILIZERS  
DYESTUFFS  
AGRICULTURAL CHEMICALS  
MEDICINES  
CONSTRUCTION AND BUILDING  
MATERIALS**



**MITSU  
TOATSU**

**MITSU TOATSU CHEMICALS, INC.**

2-5, Kasumigaseki 3-chome, Chiyoda-ku, Tokyo, Japan

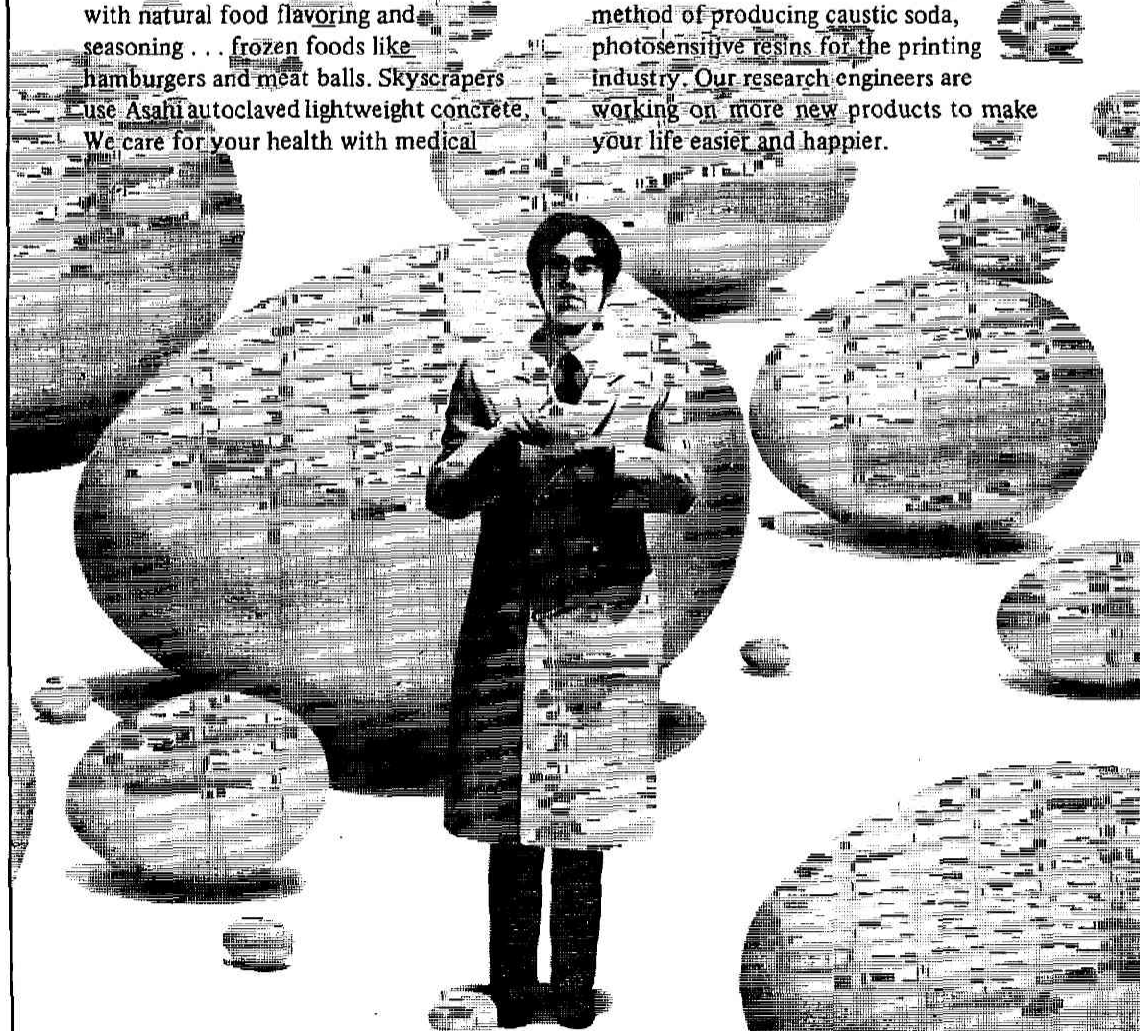
Cable: "MITSUITOATSU TOKYO"

Telex: Call No. 0222-3622 Answer Back Code (MATCHEM J)

# Like the goose that laid the golden eggs, Asahi Kasei is producing many things for your needs.

To make life better for everyone, Asahi Kasei produces all kinds of fibers and filaments to make the clothes you wear . . . draperies, carpets, wall coverings, blankets . . . tire cords for your automobile. We're in the food business with natural food flavoring and seasoning . . . frozen foods like hamburgers and meat balls. Skyscrapers use Asahi autoclaved lightweight concrete. We care for your health with medical

equipment, medicines, artificial kidneys. Asahi Kasei products also include plastics of all kinds, synthetic rubber, fertilizers, starting materials and intermediates, ion exchange membranes for a non-polluting method of producing caustic soda, photosensitive resins for the printing industry. Our research engineers are working on more new products to make your life easier and happier.



## Asahi Chemical Industry Co., Ltd.

Tokyo Head Office: Hibiya-Mitsui Building, 1-2, Yuraku-cho 1-chome, Chiyoda-ku, Tokyo, Japan

Tel: (03) 507-2730 Telex: 222-3518 (BEMBRG J) Cable: ASAHIKASEI-TOKYO

Osaka Head Office: Shin-Osaka Building, 25-1, Dojima Hamadori 1-chome, Kita-ku, Osaka, Japan

Tel: (06) 347-3111 Telex: 523-3811 (BEMBRG J) Cable: BEMBRG-OSAKA

**Example of Application with  
EMAX-1000 + SEM**

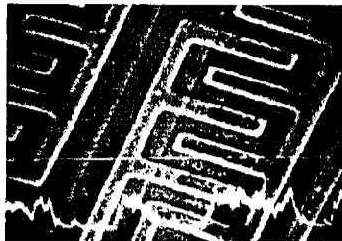


Photo 1 : 700 fold enlargement of an IC. The lower part shows the line analysis of Al. The electron Beam is scanned over the line (scanning time: 80 sec.).



Photo 2: The plan analysis of Photo 1 showing Al distribution.



Photo 3: Background is removed by contrast enhancer.

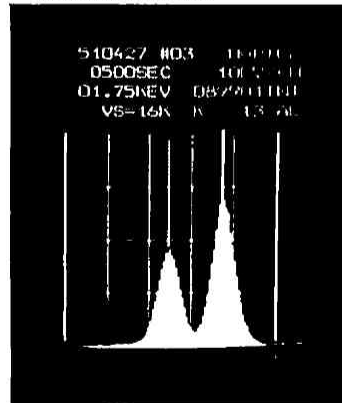
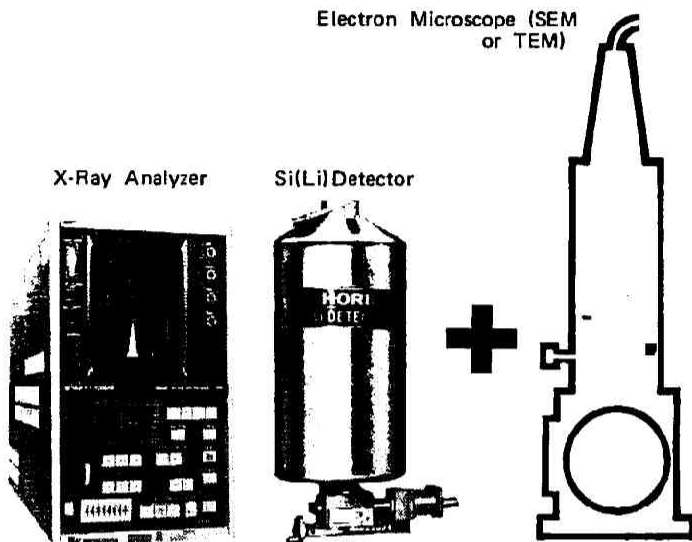


Photo 4: The X-ray analysis of the area shown in Photo 1. The brighter peak is the window-set Al. The adjacent peak is Si.

**Simultaneous qualitative analysis of  
multi-elements ( $^{11}\text{Na}$ - $^{92}\text{U}$ )  
in a few tens of seconds.**



**X-ray Micro-Analysis System**

**HORIBA MODEL EMAX-1000 SERIES  
X-RAY ENERGY DISPERSIVE ANALYZERS**

Each of HORIBA Model EXAM-1000 SERIES X-RAY ED ANALYZER for X-ray micro-analysis is a system for simultaneously, speedily and easily analyzing a multiple number of elements of a substance in a small area, by assembling it together with your electron microscope of SEM or TEM type. Extremely reliable. No personal error. Non-destructive. Consists of a high-resolution Si(Li) X-Ray Detector, a Pulse-Height Analyzer and a Video Display.

**MAIN APPLICATIONS**  
Qualitative analysis in the fields of metal and mineral industries, chemical industries and electronic industries.  
Fixing the elements in biochemical and bio-assay studies.

Objects: Characteristic X-rays of elements from  $^{11}\text{Na}$  (sodium) to  $^{92}\text{U}$  (uranium).  
System of Measurement: Energy-Dispersive Method by Si(Li) X-Ray Detector.  
Energy Resolution: Less than F.W.H.M. 162eV (MnK $\alpha$  Line 5.9keV, 1000 cps)

A group of specialists in HORIBA, Ltd. also offers an engineering service encompassing an overall system in order to maximize the performances of your X-ray analyzer system.

**HORIBA**

**HORIBA, Ltd.**

Head Office:  
Miyano Higashi, Kisshoin, Minami-ku, Kyoto,  
Japan  
Phone : (075) 313-8121  
Cable Add.: HORIBA KYOTO / Telex: 5422130



# KURARAY HOLLOW FIBER MEMBRANES FOR A SUPER FINE FILTRATION SYSTEM AND A DIALYSIS SYSTEM

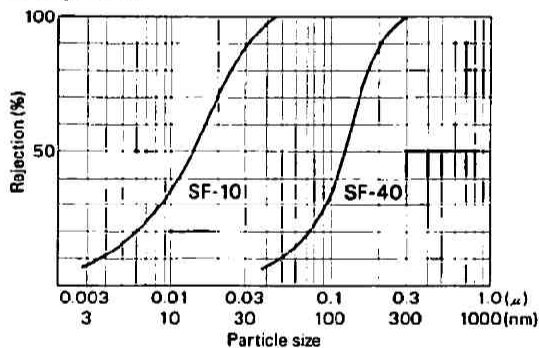
By virtue of the hollow fiber of polyvinyl alcohol, the main features of these membrane systems are :

- Excellent resistance to chemicals ; such as acids, alkalis, and most solvents
- Excellent resistance to microbial attacks
- Large membrane area per a single module
- Easy handling for assembling and disassembling of a module

## KURARAY SUPER FINE FILTER

**Performance** (USP 4.073.733)

- Rejection



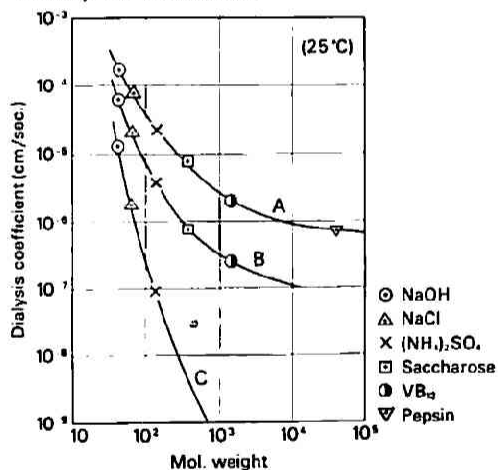
### Applications

- Removal of bacteria, yeasts, and suspended solids from water, syrup, fermented prod., in food industry
- Condensation of latex and emulsion
- Production of sterile and dustless water
- Prefiltration of sea water and waste water for reverse osmosis

## KURARAY HOLLOW FIBER DIALYZER

**Performance** (USP 4.071.454)

- Dialysis coefficient



### Applications

- Recovery of caustic soda from the used steeping liquor in viscose rayon process
- Removal of salts from polypeptides, amino acids, enzymes, antibiotics, hormones, etc.

KURARAY is now offering these membrane systems in various sizes, from a small one for laboratory testing to a large one for commercial production.

For further details, please contact us immediately.



**KURARAY CO., LTD.**

Project Development Department, 12-39, 1-Chome, Umeda, Kita-ku, Osaka, 530, JAPAN