

Biochemical Differentiation in Japanese Newts, Genus *Cynops* (Salamandridae)

TERUTAKE HAYASHI and MASAFUMI MATSUI¹

Department of Zoology, Faculty of Science, Kyoto University, Kyoto 606,
and ¹Biological Laboratory, Yoshida College,
Kyoto University, Kyoto 606, Japan

ABSTRACT—Genetic variation was surveyed in 38 populations of Japanese newts of the genus *Cynops* using starch gel electrophoresis. *C. ensicauda* from the Ryukyu Archipelago was shown to be genetically well differentiated from *C. pyrrhogaster* from the Japanese main islands. Separation of these two forms at the species level is supported. *C. ensicauda* is genetically divided into two groups, each of which corresponds to previously recognized subspecies. On the contrary, protein variation patterns in *C. pyrrhogaster* are not consistent with the previously recognized subspecies or local races. From available geological information, the electrophoretic clock is calibrated at 1D=13–22 MY in Japanese *Cynops*.

INTRODUCTION

Two allopatric newt species of the genus *Cynops* are known from Japan. *C. pyrrhogaster* occurs on the main islands of Honshu, Shikoku and Kyushu, while *C. ensicauda* inhabits the Amami and Okinawa Groups of the Ryukyu Archipelago. A marked geographic variation in external morphology has been detected within each species [1, 2]. Some authors [3, 4] considered morphological variations of these two species to overlap with each other and doubted the specific validity of *C. ensicauda*, treating it as a subspecies of *C. pyrrhogaster*. However, only a few comparative studies have been made between these two species [3, 5], and clarification of the taxonomic relationships of these newts requires an extensive survey of geographic variation in Japanese *Cynops* from many approaches.

Although North American and European newt species belonging to *Taricha*, *Notophthalmus*, and *Triturus* have been studied electrophoretically for the purposes of population genetics, taxonomy, and evolutionary biology [6–9], no comparable studies have been done on Asian newts. Available data indicate that genetic distance values calcu-

lated between populations can differentiate named species or subspecies and, therefore, seem to provide rough estimates of the limits of species within the family Salamandridae. Thus, an electrophoretic analysis should be a useful tool for investigating taxonomic problems among Japanese newts. The present study was undertaken mainly in order to understand the amount of genetic differentiation between *C. pyrrhogaster* and *C. ensicauda*, as estimated from an electrophoretic analysis of protein variation. Moreover, based upon geological data, we have derived a calibration for the electrophoretic evolutionary clock in Japanese *Cynops* and compare the value with those proposed previously [10, 11].

MATERIALS AND METHODS

A total of 610 newts from 23 populations of *Cynops pyrrhogaster* in western Honshu and Kyushu Islands and 15 populations of *C. ensicauda* in three islands in the Amami Group and four in the Okinawa Group, the Ryukyu Archipelago, were analyzed electrophoretically (Fig. 1 and Table 1). We used southwestern populations of *C. pyrrhogaster* for comparison with *C. ensicauda* since they are geographically adjacent to the range covered by *C. ensicauda*.

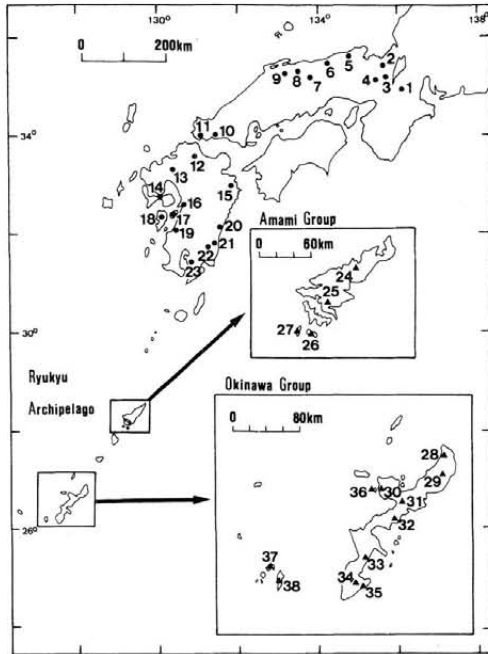


Fig. 1. Geographic localities from which samples of *Cynops* were collected. Localities of *C. pyrrhogaster* are indicated by circles (1–23) and localities of *C. ensicauda* by triangles (24–38).

Samples of liver were removed and maintained frozen at -84°C until used in electrophoresis. Voucher specimens were fixed in 10% formalin, later preserved in 70% ethanol and deposited in Hayashi's collection at Kyoto University. Homogenized tissue extracts were analyzed by standard horizontal starch gel electrophoresis [12–15], using Connaught starch at a concentration of 11.5%. The enzymes examined and locus designations are listed in Table 2. The buffer system employed in the electrophoretic analysis was 0.155 M tris / 0.043 M citrate, pH 7.0 (1:15 dilution of electrode buffer for gel) for all enzymes. Genetic interpretations of allozymic data were based on criteria developed by Selander *et al.* [16]. Enzyme nomenclature and E. C. numbers follow the most recent recommendations of the Nomenclature Committee of the International Union of Biochemistry [17] and abbreviations and isozyme designations follow recommendations of Murphy and Crabtree [18]. Electromorphs were designated by letters with "a" representing the most rapidly

migrating anodal variant.

The unbiased minimum genetic distance between populations (D) recommended by Nei [19] was computed from observed electromorph frequencies. According to Nei's suggestion [19], all negative values obtained using the collection for small sample sizes were regarded as being equal to 0. A UPGMA phenogram [20] was constructed from genetic distances. A contingency Chi-square test was performed to test for inter-sample electromorph frequency heterogeneity [21]. All samples were also tested for conformance to Hardy-Weinberg expectations with the Chi-square test. For statistical tests, $P < 0.05$ was regarded as significant.

RESULTS

A locus was considered polymorphic when two or more electromorphs were detected. Only one of the 15 loci resolved (*Ap-A*) was monomorphic for the same electromorph in all individuals. Table 3 summarizes electromorph frequencies for the remaining 14 polymorphic loci. Fixed differences between *C. pyrrhogaster* and *C. ensicauda* were identified at three loci (*Acp-A*, *Iddh-A* and *M-Me-A*).

Ten of the remaining 11 loci showed significant heterogeneity in electromorph frequencies (Table 4). At four of these 11 loci, a single electromorph predominated in all populations (*Ldh-A*, *Ldh-B*, *M-Mdh-A* and *Pgdh-A*). At *Ldh-A* and *M-Mdh-A* loci, electromorphs other than the common one were unique to single populations. Among the remainder of these four loci, some electromorphs with low to moderate frequency of occurrence were shared among two or more populations. Seven other loci had different variants predominating in different populations (*S-Aat-A*, *Est-1*, *Gpi-A*, *S-Mdh-A*, *S-Me-A*, *Pgm-A*, *S-Sod-A*).

Within *C. pyrrhogaster*, three loci were monomorphic (*Acp-A*, *Ap-A* and *Iddh-A*) and all of 12 polymorphic loci showed statistically significant heterogeneity in electromorph frequencies (Table 4). *C. ensicauda* had six monomorphic loci (*Ap-A*, *Iddh-A*, *Ldh-A*, *M-Mdh-A*, *M-Me-A* and *S-Sod-A*) and significant heterogeneity in electromorph frequencies was observed at seven of nine poly-

TABLE 1. Species, sample size, and locality data for the animals used for electrophoretic analysis

| Species | Population number | Locality | N | |
|----------------------------|-------------------------|-------------------------------|---------------------------------|----|
| <i>Cynops pyrrhogaster</i> | 1 | Shigaraki, Shiga | 20 | |
| | 2 | Miyama, Kyoto | 39 | |
| | 3 | Kyoto, Kyoto | 16 | |
| | 4 | Kameoka, Kyoto | 8 | |
| | 5 | Kumihama, Kyoto | 4 | |
| | 6 | Tottori, Tottori | 19 | |
| | 7 | Ningyo Pass, Okayama | 20 | |
| | 8 | Mt. Daisen, Tottori | 8 | |
| | 9 | Hirose, Shimane | 20 | |
| | 10 | Yamaguchi, Yamaguchi | 20 | |
| | 11 | Sanyo, Yamaguchi | 20 | |
| | 12 | Yukuhashi, Fukuoka | 20 | |
| | 13 | Higashiseburi, Saga | 20 | |
| | 14 | Isahaya, Nagasaki | 21 | |
| | 15 | Usuki, Oita | 5 | |
| | 16 | Shiranui, Kumamoto | 20 | |
| | 17 | Kamijima Isl., Amakusa Isls. | 18 | |
| | 18 | Shimajima Isl., Amakusa Isls. | 20 | |
| | 19 | Minamata, Kumamoto | 20 | |
| | 20 | Tsuno, Miyazaki | 20 | |
| | 21 | Miyazaki, Miyazaki | 17 | |
| | 22 | Tano, Miyazaki | 11 | |
| | 23 | Kanoya, Kagoshima | 18 | |
| | <i>Cynops ensicauda</i> | 24 | Naze, Amami-Oshima Isl. | 27 |
| | | 25 | Mt. Kochi, Amami-Oshima Isl. | 20 |
| | | 26 | Ukejima Isl. | 9 |
| | | 27 | Yorojima Isl. | 21 |
| | | 28 | Kayauchibanta, Okinawajima Isl. | 5 |
| | | 29 | Mt. Yonaha, Okinawajima Isl. | 8 |
| | | 30 | Motobu, Okinawajima Isl. | 5 |
| | | 31 | Mt. Nago, Okinawajima Isl. | 10 |
| | | 32 | Ginoza, Okinawajima Isl. | 10 |
| | | 33 | Nakagusuku, Okinawajima Isl. | 18 |
| | | 34 | Tamagusuku, Okinawajima Isl. | 10 |
| | | 35 | Chinen, Okinawajima Isl. | 9 |
| | | 36 | Sezokojima Isl. | 4 |
| | | 37 | Zamamijima Isl. | 30 |
| | | 38 | Tokashikijima Isl. | 20 |

TABLE 2. Enzymes and loci analysed in Japanese *Cynops*

| Enzyme | Enzyme commission number | Locus |
|--------------------------------|--------------------------|----------------|
| Acid phosphatase | 3.1.3.2 | <i>Acp-A</i> |
| Aminopeptidase | 3.4.11.1 | <i>Ap-A</i> |
| Aspartate aminotransferase | 2.6.1.1 | <i>S-Aat-A</i> |
| Esterase | -- | <i>Est-I</i> |
| Glucose phosphate isomerase | 5.3.1.9 | <i>Gpi-A</i> |
| L-iditol dehydrogenase | 1.1.1.14 | <i>Iddh-A</i> |
| Lactate dehydrogenase | 1.1.1.27 | <i>Ldh-A</i> |
| Lactate dehydrogenase | 1.1.1.27 | <i>Ldh-B</i> |
| Malate dehydrogenase | 1.1.1.37 | <i>M-Mdh-A</i> |
| Malate dehydrogenase | 1.1.1.37 | <i>S-Mdh-A</i> |
| "Malic Enzyme"* | 1.1.1.40 | <i>M-Me-A</i> |
| "Malic Enzyme"* | 1.1.1.40 | <i>S-Me-A</i> |
| Phosphoglucomutase | 5.4.2.2 | <i>Pgm-A</i> |
| Phosphogluconate dehydrogenase | 1.1.1.44 | <i>Pgdh-A</i> |
| Superoxide dismutase | 1.15.1.1 | <i>S-Sod-A</i> |

Mitochondrial and supernatant loci are denoted by M- and S- prefixes, respectively.

*NADP-dependent malate dehydrogenase

morphic loci. Among Amami Group populations of *C. ensicauda*, another monomorphic locus was recognized (*Est-I*) and five of eight polymorphic loci were significantly heterogeneous. Among Okinawa Group populations, eight loci were monomorphic and four of seven polymorphic loci showed significant heterogeneity.

The proportions of polymorphic loci ranged from 20.0% (populations 1 and 22) to 53.3% (populations 6, 13, 18 and 19) ($\bar{x}=37.7\%$) in *C. pyrrhogaster* and ranged from 13.3% (population 32) to 40.0% (population 33) ($\bar{x}=27.2\%$) in *C. ensicauda* (Table 3). The mean number of electromorphs per locus was 1.44 (range 1.20–1.60) in *C. pyrrhogaster*, and 1.32 (range 1.13–1.47) in *C. ensicauda*. The frequencies of genotypes were in good agreement with Hardy-Weinberg proportion in most cases, but the significant heterozygote deficiencies occurred at the *S-Aat-A* locus in one population (population 33), at the *M-Me-A* locus in five populations (populations 12, 13, 16, 19 and 20) and at the *S-Me-A* locus in six populations (populations 2, 7, 8, 9, 14 and 16).

Figure 2 presents a UPGMA phenogram based on the Nei's D values, which are shown in Table 5.

The first major dichotomy separates populations of *C. ensicauda* from those of *C. pyrrhogaster* with the mean D value between them being 0.356 (range 0.239–0.724). The mean intraspecific D values are 0.035 (range 0–0.133) in *C. ensicauda* and 0.060 (range 0–0.336) in *C. pyrrhogaster*.

The cluster of *C. ensicauda* is divided into two distinct regional groups, with the mean D value between these two groups being 0.078 (range 0.041–0.133). One subcluster is composed of populations from the Amami Group and another of populations from the Okinawa Group. The mean D values are 0.006 (range 0–0.013) within the former and 0.004 (range 0–0.015) within the latter.

The cluster of *C. pyrrhogaster* is also divided into two distinct groups. One subcluster contains three populations from southernmost part of Kyushu (populations 21–23) and another contains all the remaining populations. The mean D value is 0.156 (range 0.044–0.336) between these two groups.

The mean D value between populations of *C. ensicauda* and three southernmost populations of *C. pyrrhogaster* is 0.532 (range 0.326–0.724), while

TABLE 3. Electromorph frequencies and variability estimates for polymorphic loci in 38 populations of Japanese *Cynops*

| Locus | <i>C. pyrrhogaster</i> | | | | | | | | | |
|-----------------------------|-------------------------------|-------------------------------|-------------------------------|-------------------------------|--------------------|-------------------------------|-------------------------------|--------------------|-------------------------------|-------------------------------|
| | Sasayama race | | | | | | | | Hiroshima race | |
| | 1 | 2 | 3 | 4 | 5 | 6 | 7 | 8 | 9 | 10 |
| <i>Acp-A</i> | c | c | c | c | c | c | c | c | c | c |
| <i>S-Aat-A</i> | b | a(.069) b(.914) d(.017) | a(.107) b(.893) | a(.125) b(.875) | b | b(.974) d(.026) | b | b | a(.139) b(.861) | b |
| <i>Est-I</i> | b | b | b | b | b | b(.947) c(.053) | b(.947) c(.053) | b | b | b |
| <i>Gpi-A</i> | c(.975) d(.025) | b(.013) c(.884) d(.103) | b(.063) c(.906) d(.031) | b(.125) c(.750) d(.125) | c | c | c | c | c | a(.150) c(.750) c(.100) |
| <i>Iddh-A</i> | b | b | b | b | b | b | b | b | b | b |
| <i>Ldh-A</i> | b | b | b | b | b | b | b | b | b | b |
| <i>Ldh-B</i> | c | c | c | c | a(.125) c(.875) | a(.233) c(.767) | a(.175) c(.825) | a(.063) c(.937) | c | c |
| <i>M-Mdh-A</i> | b | b | b | b | b | b | b | b | b | b |
| <i>S-Mdh-A</i> | c | b(.016) c(.968) d(.016) | c(.937) d(.063) | c(.937) e(.063) | c(.875) d(.125) | a(.026) c(.974) | a(.025) c(.725) d(.250) | c(.438) d(.562) | c | c |
| <i>M-Me-A</i> | b(.941) c(.059) | b(.677) c(.323) | b(.438) c(.562) | b(.375) c(.625) | b(.375) c(.625) | b(.895) c(.105) | b(.667) c(.333) | b(.875) c(.125) | b(.643) c(.357) | b(.333) c(.667) |
| <i>S-Me-A</i> | b | a(.219) b(.781) | b | b | b | b | b(.950) c(.050) | b(.750) c(.250) | b(.850) c(.150) | b |
| <i>Pgm-A</i> | a(.025) b(.500) d(.475) | b(.516) d(.484) | a(.031) b(.375) d(.594) | b(.375) d(.625) | b(.250) d(.750) | a(.053) b(.342) d(.605) | b(.450) d(.550) | b(.313) d(.687) | a(.025) b(.950) d(.025) | a(.150) b(.775) d(.075) |
| <i>Pgdh-A</i> | b | b | b | b | b | b(.972) c(.028) | a(.025) b(.975) | b | b(.900) c(.100) | b |
| <i>S-Sod-A</i> | b | b | b | b | b | b | b | b | b | a(.150) b(.850) |
| % loci polymorphic | 20.0 | 40.0 | 33.3 | 33.3 | 26.7 | 53.3 | 46.7 | 33.3 | 33.3 | 26.7 |
| number of alleles per locus | 1.27 | 1.60 | 1.47 | 1.40 | 1.27 | 1.60 | 1.53 | 1.33 | 1.40 | 1.40 |
| Mean heterozygosity | .041 | .083 | .106 | .108 | .117 | .113 | .093 | .075 | .060 | .085 |

TABLE 3. Continued

| Locus | <i>C. pyrrhogaster</i> | | | | | | | | | |
|-----------------------------|--|-------------------------------|-------------------------------|-------------------------------|--------------------|--------------------|--------------------|--------------------|-------------------------------|--------------------|
| | Hiroshima race | | | | | | | | | |
| | 11 | 12 | 13 | 14 | 15 | 16 | 17 | 18 | 19 | 20 |
| <i>Acp-A</i> | c | c | c | c | c | c | c | c | c | c |
| <i>S-Aat-A</i> | b | b(.853) c(.147) | a(.050) b(.950) | b(.950) e(.050) | b | b(.775) a(.225) | b | a(.025) b(.975) | b(.944) d(.056) | b(.950) d(.050) |
| <i>Est-1</i> | a(.025) b(.975) | a(.075) b(.925) | a(.250) b(.750) | b | b(.800) c(.200) | a(.575) b(.425) | a(.306) b(.694) | a(.100) b(.900) | a(.250) b(.750) | b |
| <i>Gpi-A</i> | a(.100) c(.850) d(.050) | c(.975) d(.025) | b(.025) c(.900) d(.075) | c(.955) d(.045) | c | c | c(.972) d(.028) | b(.425) c(.575) | b(.025) c(.975) | c(.975) d(.025) |
| <i>Iddh-A</i> | b | b | b | b | b | b | b | b | b | b |
| <i>Ldh-A</i> | b | a(.075) b(.925) | b | b | b | b | b | b | b | b |
| <i>Ldh-B</i> | c | c | b(.075) c(.925) | c | c | c | c | c | c | c |
| <i>M-Mdh-A</i> | b | b | b | a(.050) b(.950) | b | b | b | b | b | b |
| <i>S-Mdh-A</i> | c | c | c | b(.048) c(.857) d(.095) | b(.300) c(.700) | b(.050) c(.950) | c | b(.025) c(.975) | b(.026) c(.974) | c(.974) d(.026) |
| <i>M-Me-A</i> | b(.684) c(.316) | b(.472) c(.528) | b(.769) c(.231) | b(.735) c(.265) | b(.500) c(.500) | b(.529) c(.471) | b | b(.971) c(.029) | b(.393) c(.607) | b(.154) c(.846) |
| <i>S-Me-A</i> | b(.975) c(.025) | b | b | a(.045) b(.955) | b | b(.800) c(.200) | b | b | a(.025) b(.950) c(.025) | b |
| <i>Pgm-A</i> | a(.050) b(.800) d(.075) e(.075) | b | a(.075) b(.925) | a(.045) b(.955) | b(.800) d(.200) | b | b | a(.025) b(.975) | a(.300) b(.700) | a(.100) b(.900) |
| <i>Pgdh-A</i> | b | a(.025) b(.950) c(.025) | a(.075) b(.925) | b | a(.100) b(.900) | b | a(.118) b(.882) | a(.125) b(.875) | b | b(.950) c(.050) |
| <i>S-Sod-A</i> | b(.950) c(.050) | b(.975) c(.025) | b(.750) c(.250) | b | b | b(.725) c(.275) | b(.750) c(.250) | b(.950) c(.050) | b(.900) c(.100) | b |
| % loci polymorphic | 40.0 | 46.7 | 53.3 | 46.7 | 33.3 | 40.0 | 26.7 | 53.3 | 53.3 | 40.0 |
| number of alleles per locus | 1.60 | 1.53 | 1.60 | 1.53 | 1.33 | 1.40 | 1.27 | 1.53 | 1.60 | 1.40 |
| mean heterozygosity | .061 | .049 | .090 | .042 | .129 | .097 | .068 | .074 | .091 | .027 |

TABLE 3. Continued

| Locus | <i>C. pyrrhogaster</i> | | | <i>C. ensicauda</i> | | | | | |
|-----------------------------|------------------------|--------------------|-------------------------------|-------------------------------|-------------------------------|--------------------|--------------------|--------------------|-------------------------------|
| | Hiroshima race | | | Amami Group | | | | Okinawa Group | |
| | 21 | 22 | 23 | 24 | 25 | 26 | 27 | 28 | 29 |
| <i>Acp-A</i> | c | c | c | a | a | a(.917) b(.083) | a | a | a |
| <i>S-Aat-A</i> | b(.722) d(.278) | b(.357) d(.643) | a(.056) b(.500) d(.444) | a(.058) b(.942) | a(.050) b(.900) d(.050) | b(.944) d(.056) | a(.025) b(.975) | a(.100) b(.900) | a(.125) b(.687) d(.188) |
| <i>Est-1</i> | b | b | b | b | b | b | b | b | b |
| <i>Gpi-A</i> | b(.971) c(.029) | b(.955) c(.045) | b(.333) c(.667) | c | c | c | b(.029) c(.971) | c | b(.125) c(.875) |
| <i>Iddh-A</i> | b | b | b | a | a | a | a | a | a |
| <i>Ldh-A</i> | b | b | b | b | b | b | b | b | b |
| <i>Ldh-B</i> | c | c | c | b(.096) c(.904) | b(.275) c(.725) | c | c | c | c |
| <i>M-Mdh-A</i> | b | b | b | b | b | b | b | b | b |
| <i>S-Mdh-A</i> | c | c | b(.028) c(.972) | d | d(.921) e(.079) | d | d | c(.800) d(.200) | c(.438) d(.562) |
| <i>M-Me-A</i> | b(.500) c(.500) | c | b(.429) c(.571) | a | a | a | a | a | a |
| <i>S-Me-A</i> | b | b | b | b | b(.875) c(.125) | b | b | b(.300) c(.700) | b(.313) c(.687) |
| <i>Pgm-A</i> | a(.500) b(.500) | a(.727) b(.273) | a(.222) b(.750) c(.028) | b(.944) d(.037) e(.019) | b | b(.944) f(.056) | b | b(.625) d(.375) | b |
| <i>Pgdh-A</i> | b | b | b | a(.042) b(.937) c(.021) | a(.025) b(.975) | a(.333) b(.667) | a(.350) b(.650) | b | b |
| <i>S-Sod-A</i> | c | c | b(.361) c(.639) | b | b | b | b | b | b |
| % loci polymorphic | 26.7 | 20.0 | 40.0 | 26.7 | 33.3 | 28.6 | 20.0 | 28.6 | 28.6 |
| number of alleles per locus | 1.27 | 1.20 | 1.53 | 1.40 | 1.40 | 1.29 | 1.20 | 1.29 | 1.36 |
| mean heterozygosity | .147 | .040 | .152 | .031 | .054 | .060 | .044 | .111 | .098 |

TABLE 3. Continued

| Locus | <i>C. ensicauda</i> | | | | | | | | |
|-----------------------------|-------------------------------|-------------------------------|--------------------|-------------------------------|--------------------|-------------------------------|--------------------|-------------------------------|--------------------|
| | Okinawa Group | | | | | | | | |
| | 30 | 31 | 32 | 33 | 34 | 35 | 36 | 37 | 38 |
| <i>Acp-A</i> | a | a | a | a | a | a | a | a | a |
| <i>S-Aat-A</i> | a(.100) b(.800) d(.100) | b(.900) d(.100) | b | b(.972) d(.028) | a(.056) b(.944) | a(.100) b(.900) | b(.750) d(.250) | a(.037) b(.815) d(.148) | b(.833) d(.167) |
| <i>Est-1</i> | b | b | b | a(.028) b(.944) c(.028) | b | b | b | b | b |
| <i>Gpi-A</i> | c | b(.050) c(.900) d(.050) | c | c(.861) d(.139) | c | c | b(.125) c(.875) | b(.033) c(.967) | c |
| <i>Iddh-A</i> | a | a | a | a | a | a | a | a | a |
| <i>Ldh-A</i> | b | b | b | b | b | b | b | b | b |
| <i>Ldh-B</i> | c | c | c | c | c | c | c | c | c |
| <i>M-Mdh-A</i> | b | b | b | b | b | b | b | b | b |
| <i>S-Mdh-A</i> | c(.500) d(.500) | c(.850) d(.150) | c(.550) d(.450) | c(.719) d(.281) | c(.556) d(.444) | c(.600) d(.350) e(.050) | b(.333) c(.667) | c(.696) d(.304) | c(.550) d(.450) |
| <i>M-Me-A</i> | a | a | a | a | a | a | a | a | a |
| <i>S-Me-A</i> | b(.100) c(.900) | b(.450) c(.550) | b(.300) c(.700) | b(.306) c(.694) | b(.278) c(.722) | b(.300) c(.700) | b(.125) c(.875) | b(.117) c(.883) | b(.400) c(.600) |
| <i>Pgm-A</i> | b | b | b | b | b | b(.950) d(.050) | b | b | b(.950) d(.050) |
| <i>Pgdh-A</i> | b | b | b | b(.972) c(.028) | b | b | b | b(.981) c(.019) | b |
| <i>S-Sod-A</i> | b | b | b | b | b | b | b | b | b |
| % loci polymorphic | 21.4 | 26.7 | 13.3 | 40.0 | 28.6 | 21.4 | 28.6 | 35.7 | 26.7 |
| number of alleles per locus | 1.29 | 1.33 | 1.13 | 1.47 | 1.36 | 1.21 | 1.29 | 1.43 | 1.27 |
| mean heterozygosity | .086 | .053 | .047 | .081 | .079 | .079 | .119 | .073 | .096 |

TABLE 4. Probability levels of electromorph frequency heterogeneity with a contingency Chi-square test

| Locus | Total | <i>C. Pyrrhogaster</i> | | <i>C. ensicauda</i> | |
|----------------|-------|------------------------|-------|---------------------|------|
| | | Total | Amami | Okinawa | |
| <i>Acp-A</i> | .001 | — | .05 | .05 | — |
| <i>S-Aat-A</i> | .001 | .001 | NS | NS | .05 |
| <i>Est-1</i> | .001 | .001 | NS | — | NS |
| <i>Gpi-A</i> | .001 | .001 | .001 | NS | .01 |
| <i>Iddh-A</i> | .001 | — | — | — | — |
| <i>Ldh-A</i> | .001 | .001 | — | — | — |
| <i>Ldh-B</i> | .001 | .001 | .001 | .001 | — |
| <i>M-Mdh-A</i> | NS | .05 | — | — | — |
| <i>S-Mdh-A</i> | .001 | .001 | .001 | .05 | .001 |
| <i>M-Me-A</i> | .001 | .001 | — | — | — |
| <i>S-Me-A</i> | .001 | .001 | .001 | .01 | NS |
| <i>Pgm-A</i> | .001 | .001 | .001 | NS | .001 |
| <i>Pgdh-A</i> | .001 | .001 | .001 | .001 | NS |
| <i>S-Sod-A</i> | .001 | .001 | — | — | — |

NS indicates statistically insignificant difference at $P < 0.05$.

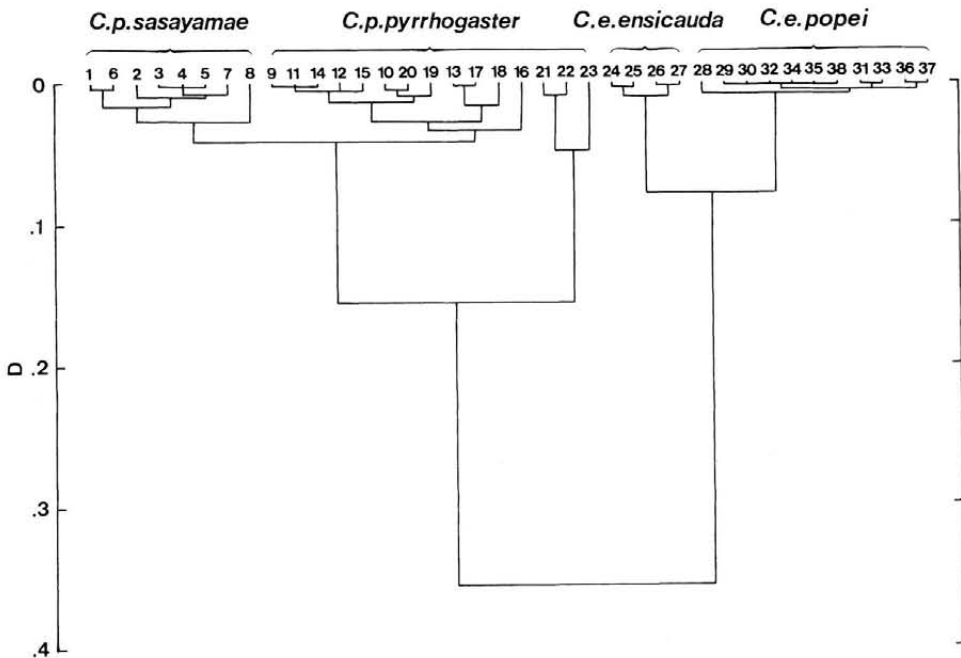


FIG. 2. UPGMA phenogram of populations of Japanese *Cynops* studied. Scale is in genetic distance units of Nei (1978).

TABLE 5. Nei's genetic similarity (below diagonal) and distance (above diagonal) between populations of Japanese *Cynops* studied

| | <i>C. pyrrhogaster</i> | | | | | | | | | |
|----|------------------------|-------|-------|--------|--------|-------|-------|-------|----------------|-------|
| | Sasayama race | | | | | | | | Hiroshima race | |
| | 1 | 2 | 3 | 4 | 5 | 6 | 7 | 8 | 9 | 10 |
| 1 | | 0.007 | 0.017 | 0.024 | 0.023 | 0.004 | 0.010 | 0.026 | 0.022 | 0.038 |
| 2 | 0.993 | | 0.006 | 0.008 | 0.011 | 0.012 | 0.009 | 0.029 | 0.017 | 0.024 |
| 3 | 0.983 | 0.994 | | -0.005 | -0.005 | 0.017 | 0.007 | 0.034 | 0.026 | 0.018 |
| 4 | 0.977 | 0.992 | 1.005 | | -0.004 | 0.024 | 0.011 | 0.040 | 0.031 | 0.017 |
| 5 | 0.977 | 0.989 | 1.005 | 1.004 | | 0.015 | 0.003 | 0.028 | 0.041 | 0.028 |
| 6 | 0.996 | 0.988 | 0.983 | 0.976 | 0.985 | | 0.006 | 0.025 | 0.035 | 0.049 |
| 7 | 0.990 | 0.991 | 0.993 | 0.989 | 0.997 | 0.994 | | 0.010 | 0.026 | 0.032 |
| 8 | 0.974 | 0.971 | 0.967 | 0.961 | 0.973 | 0.976 | 0.990 | | 0.057 | 0.076 |
| 9 | 0.978 | 0.984 | 0.974 | 0.969 | 0.960 | 0.966 | 0.974 | 0.944 | | 0.014 |
| 10 | 0.962 | 0.977 | 0.982 | 0.983 | 0.973 | 0.952 | 0.969 | 0.927 | 0.986 | |
| 11 | 0.987 | 0.988 | 0.980 | 0.977 | 0.969 | 0.975 | 0.981 | 0.951 | 0.997 | 0.991 |
| 12 | 0.967 | 0.976 | 0.973 | 0.970 | 0.961 | 0.954 | 0.968 | 0.927 | 0.997 | 0.992 |
| 13 | 0.976 | 0.973 | 0.961 | 0.956 | 0.946 | 0.963 | 0.966 | 0.933 | 0.990 | 0.977 |
| 14 | 0.982 | 0.983 | 0.970 | 0.965 | 0.958 | 0.968 | 0.977 | 0.952 | 0.998 | 0.983 |
| 15 | 0.980 | 0.987 | 0.988 | 0.984 | 0.982 | 0.972 | 0.989 | 0.957 | 0.994 | 0.991 |
| 16 | 0.937 | 0.946 | 0.938 | 0.934 | 0.925 | 0.925 | 0.937 | 0.903 | 0.969 | 0.958 |
| 17 | 0.973 | 0.960 | 0.939 | 0.931 | 0.924 | 0.957 | 0.954 | 0.929 | 0.979 | 0.953 |
| 18 | 0.972 | 0.963 | 0.945 | 0.943 | 0.925 | 0.955 | 0.953 | 0.928 | 0.978 | 0.958 |
| 19 | 0.963 | 0.974 | 0.978 | 0.974 | 0.969 | 0.955 | 0.969 | 0.929 | 0.986 | 0.992 |
| 20 | 0.944 | 0.964 | 0.974 | 0.973 | 0.966 | 0.934 | 0.958 | 0.911 | 0.983 | 0.995 |
| 21 | 0.844 | 0.854 | 0.860 | 0.870 | 0.839 | 0.833 | 0.836 | 0.802 | 0.853 | 0.884 |
| 22 | 0.750 | 0.778 | 0.805 | 0.819 | 0.788 | 0.746 | 0.760 | 0.715 | 0.775 | 0.828 |
| 23 | 0.919 | 0.932 | 0.936 | 0.938 | 0.919 | 0.908 | 0.918 | 0.879 | 0.945 | 0.956 |
| 24 | 0.712 | 0.714 | 0.719 | 0.713 | 0.718 | 0.698 | 0.741 | 0.748 | 0.732 | 0.724 |
| 25 | 0.704 | 0.707 | 0.709 | 0.703 | 0.709 | 0.691 | 0.734 | 0.740 | 0.729 | 0.717 |
| 26 | 0.685 | 0.685 | 0.690 | 0.684 | 0.689 | 0.668 | 0.715 | 0.721 | 0.709 | 0.698 |
| 27 | 0.701 | 0.702 | 0.707 | 0.701 | 0.705 | 0.685 | 0.729 | 0.735 | 0.725 | 0.715 |
| 28 | 0.736 | 0.747 | 0.742 | 0.737 | 0.740 | 0.724 | 0.741 | 0.741 | 0.751 | 0.731 |
| 29 | 0.688 | 0.702 | 0.692 | 0.688 | 0.681 | 0.667 | 0.702 | 0.711 | 0.732 | 0.704 |
| 30 | 0.678 | 0.693 | 0.680 | 0.673 | 0.671 | 0.658 | 0.692 | 0.705 | 0.725 | 0.692 |
| 31 | 0.752 | 0.762 | 0.752 | 0.748 | 0.741 | 0.734 | 0.752 | 0.737 | 0.787 | 0.769 |
| 32 | 0.729 | 0.739 | 0.729 | 0.723 | 0.723 | 0.711 | 0.740 | 0.744 | 0.765 | 0.743 |
| 33 | 0.733 | 0.745 | 0.733 | 0.729 | 0.723 | 0.715 | 0.738 | 0.733 | 0.770 | 0.751 |
| 34 | 0.713 | 0.724 | 0.714 | 0.708 | 0.706 | 0.694 | 0.722 | 0.723 | 0.751 | 0.725 |
| 35 | 0.705 | 0.717 | 0.706 | 0.699 | 0.698 | 0.685 | 0.717 | 0.721 | 0.746 | 0.720 |
| 36 | 0.689 | 0.704 | 0.688 | 0.683 | 0.675 | 0.668 | 0.688 | 0.684 | 0.735 | 0.705 |
| 37 | 0.690 | 0.704 | 0.690 | 0.684 | 0.679 | 0.670 | 0.696 | 0.698 | 0.736 | 0.705 |
| 38 | 0.735 | 0.745 | 0.737 | 0.732 | 0.731 | 0.718 | 0.746 | 0.748 | 0.768 | 0.747 |

TABLE 5. Continued

| <i>C. pyrrhogaster</i> | | | | | | | | | | |
|------------------------|-------|-------|-------|-------|-------|-------|-------|-------|-------|-------|
| Hiroshima race | | | | | | | | | | |
| | 11 | 12 | 13 | 14 | 15 | 16 | 17 | 18 | 19 | 20 |
| 1 | 0.013 | 0.034 | 0.024 | 0.018 | 0.020 | 0.065 | 0.028 | 0.029 | 0.037 | 0.058 |
| 2 | 0.012 | 0.025 | 0.027 | 0.018 | 0.013 | 0.056 | 0.040 | 0.037 | 0.026 | 0.037 |
| 3 | 0.020 | 0.027 | 0.040 | 0.030 | 0.012 | 0.064 | 0.062 | 0.057 | 0.023 | 0.027 |
| 4 | 0.023 | 0.030 | 0.045 | 0.036 | 0.016 | 0.069 | 0.071 | 0.058 | 0.026 | 0.027 |
| 5 | 0.032 | 0.040 | 0.055 | 0.043 | 0.018 | 0.078 | 0.079 | 0.078 | 0.032 | 0.034 |
| 6 | 0.025 | 0.047 | 0.037 | 0.033 | 0.028 | 0.078 | 0.044 | 0.046 | 0.046 | 0.068 |
| 7 | 0.019 | 0.033 | 0.035 | 0.023 | 0.011 | 0.065 | 0.047 | 0.048 | 0.032 | 0.043 |
| 8 | 0.051 | 0.075 | 0.069 | 0.049 | 0.043 | 0.102 | 0.074 | 0.075 | 0.073 | 0.093 |
| 9 | 0.003 | 0.003 | 0.010 | 0.002 | 0.006 | 0.031 | 0.022 | 0.023 | 0.014 | 0.018 |
| 10 | 0.009 | 0.008 | 0.023 | 0.017 | 0.009 | 0.043 | 0.048 | 0.042 | 0.008 | 0.005 |
| 11 | | 0.006 | 0.006 | 0.002 | 0.005 | 0.035 | 0.018 | 0.017 | 0.012 | 0.021 |
| 12 | 0.994 | | 0.012 | 0.007 | 0.004 | 0.027 | 0.028 | 0.031 | 0.009 | 0.008 |
| 13 | 0.994 | 0.988 | | 0.009 | 0.014 | 0.017 | 0.002 | 0.015 | 0.014 | 0.035 |
| 14 | 0.998 | 0.993 | 0.991 | | 0.004 | 0.037 | 0.017 | 0.017 | 0.017 | 0.024 |
| 15 | 0.995 | 0.996 | 0.986 | 0.996 | | 0.030 | 0.028 | 0.031 | 0.007 | 0.010 |
| 16 | 0.966 | 0.974 | 0.983 | 0.964 | 0.970 | | 0.026 | 0.054 | 0.019 | 0.043 |
| 17 | 0.983 | 0.972 | 0.998 | 0.983 | 0.972 | 0.974 | | 0.016 | 0.034 | 0.064 |
| 18 | 0.983 | 0.969 | 0.985 | 0.983 | 0.970 | 0.947 | 0.984 | | 0.043 | 0.062 |
| 19 | 0.989 | 0.991 | 0.986 | 0.983 | 0.993 | 0.981 | 0.966 | 0.958 | | 0.009 |
| 20 | 0.980 | 0.992 | 0.965 | 0.976 | 0.990 | 0.958 | 0.938 | 0.940 | 0.991 | |
| 21 | 0.874 | 0.858 | 0.886 | 0.854 | 0.849 | 0.861 | 0.861 | 0.891 | 0.880 | 0.856 |
| 22 | 0.791 | 0.791 | 0.795 | 0.768 | 0.779 | 0.797 | 0.753 | 0.784 | 0.826 | 0.815 |
| 23 | 0.949 | 0.951 | 0.956 | 0.941 | 0.941 | 0.947 | 0.933 | 0.935 | 0.957 | 0.947 |
| 24 | 0.730 | 0.733 | 0.716 | 0.747 | 0.747 | 0.695 | 0.707 | 0.707 | 0.721 | 0.734 |
| 25 | 0.724 | 0.728 | 0.712 | 0.742 | 0.740 | 0.694 | 0.701 | 0.701 | 0.715 | 0.729 |
| 26 | 0.705 | 0.710 | 0.692 | 0.724 | 0.727 | 0.667 | 0.686 | 0.686 | 0.695 | 0.711 |
| 27 | 0.721 | 0.726 | 0.710 | 0.739 | 0.742 | 0.687 | 0.704 | 0.706 | 0.712 | 0.727 |
| 28 | 0.740 | 0.734 | 0.715 | 0.738 | 0.739 | 0.711 | 0.704 | 0.703 | 0.730 | 0.734 |
| 29 | 0.713 | 0.717 | 0.694 | 0.725 | 0.715 | 0.698 | 0.684 | 0.692 | 0.703 | 0.715 |
| 30 | 0.703 | 0.705 | 0.683 | 0.714 | 0.704 | 0.692 | 0.675 | 0.674 | 0.694 | 0.704 |
| 31 | 0.776 | 0.778 | 0.760 | 0.779 | 0.771 | 0.755 | 0.750 | 0.753 | 0.766 | 0.775 |
| 32 | 0.752 | 0.753 | 0.734 | 0.760 | 0.753 | 0.733 | 0.726 | 0.725 | 0.743 | 0.751 |
| 33 | 0.758 | 0.758 | 0.742 | 0.763 | 0.755 | 0.741 | 0.733 | 0.734 | 0.748 | 0.756 |
| 34 | 0.734 | 0.736 | 0.715 | 0.742 | 0.735 | 0.714 | 0.706 | 0.705 | 0.725 | 0.734 |
| 35 | 0.729 | 0.731 | 0.711 | 0.739 | 0.730 | 0.710 | 0.702 | 0.701 | 0.720 | 0.730 |
| 36 | 0.715 | 0.717 | 0.694 | 0.721 | 0.718 | 0.706 | 0.685 | 0.693 | 0.706 | 0.714 |
| 37 | 0.715 | 0.717 | 0.695 | 0.722 | 0.711 | 0.704 | 0.687 | 0.688 | 0.706 | 0.715 |
| 38 | 0.755 | 0.757 | 0.738 | 0.764 | 0.758 | 0.738 | 0.729 | 0.728 | 0.747 | 0.756 |

TABLE 5. Continued

| | <i>C. pyrrhogaster</i> | | | <i>C. ensicauda</i> | | | | | | |
|----|------------------------|-------|-------|---------------------|-------|-------|---------------|-------|-------|--------|
| | Hiroshima race | | | Amami Group | | | Okinawa Group | | | |
| | 21 | 22 | 23 | 24 | 25 | 26 | 27 | 28 | 29 | 30 |
| 1 | 0.169 | 0.287 | 0.084 | 0.339 | 0.351 | 0.378 | 0.355 | 0.307 | 0.374 | 0.388 |
| 2 | 0.158 | 0.251 | 0.071 | 0.337 | 0.347 | 0.378 | 0.353 | 0.291 | 0.354 | 0.366 |
| 3 | 0.151 | 0.217 | 0.066 | 0.330 | 0.344 | 0.370 | 0.347 | 0.298 | 0.368 | 0.386 |
| 4 | 0.139 | 0.200 | 0.064 | 0.338 | 0.352 | 0.380 | 0.355 | 0.305 | 0.374 | 0.396 |
| 5 | 0.176 | 0.238 | 0.085 | 0.331 | 0.344 | 0.372 | 0.350 | 0.302 | 0.384 | 0.399 |
| 6 | 0.183 | 0.293 | 0.096 | 0.359 | 0.369 | 0.404 | 0.379 | 0.323 | 0.404 | 0.418 |
| 7 | 0.179 | 0.274 | 0.085 | 0.300 | 0.310 | 0.336 | 0.316 | 0.299 | 0.353 | 0.368 |
| 8 | 0.220 | 0.336 | 0.129 | 0.291 | 0.301 | 0.327 | 0.309 | 0.300 | 0.341 | 0.350 |
| 9 | 0.159 | 0.255 | 0.056 | 0.312 | 0.316 | 0.344 | 0.321 | 0.286 | 0.312 | 0.322 |
| 10 | 0.123 | 0.189 | 0.045 | 0.323 | 0.332 | 0.359 | 0.335 | 0.313 | 0.351 | 0.368 |
| 11 | 0.135 | 0.235 | 0.052 | 0.315 | 0.323 | 0.350 | 0.327 | 0.301 | 0.338 | 0.353 |
| 12 | 0.153 | 0.234 | 0.051 | 0.310 | 0.317 | 0.342 | 0.320 | 0.309 | 0.333 | 0.349 |
| 13 | 0.121 | 0.229 | 0.045 | 0.333 | 0.340 | 0.369 | 0.342 | 0.336 | 0.365 | 0.381 |
| 14 | 0.157 | 0.264 | 0.061 | 0.291 | 0.298 | 0.323 | 0.302 | 0.303 | 0.321 | 0.337 |
| 15 | 0.163 | 0.249 | 0.061 | 0.292 | 0.301 | 0.319 | 0.299 | 0.303 | 0.336 | 0.352 |
| 16 | 0.150 | 0.227 | 0.054 | 0.363 | 0.365 | 0.405 | 0.376 | 0.341 | 0.359 | 0.368 |
| 17 | 0.150 | 0.284 | 0.070 | 0.346 | 0.355 | 0.377 | 0.350 | 0.351 | 0.379 | 0.393 |
| 18 | 0.115 | 0.243 | 0.067 | 0.346 | 0.355 | 0.377 | 0.348 | 0.352 | 0.368 | 0.394 |
| 19 | 0.128 | 0.191 | 0.044 | 0.327 | 0.335 | 0.364 | 0.340 | 0.315 | 0.352 | 0.366 |
| 20 | 0.155 | 0.205 | 0.054 | 0.309 | 0.317 | 0.341 | 0.319 | 0.309 | 0.335 | 0.351 |
| 21 | | 0.009 | 0.027 | 0.537 | 0.551 | 0.604 | 0.549 | 0.544 | 0.558 | 0.613 |
| 22 | 0.991 | | 0.069 | 0.644 | 0.658 | 0.723 | 0.660 | 0.650 | 0.657 | 0.724 |
| 23 | 0.974 | 0.934 | | 0.397 | 0.405 | 0.443 | 0.411 | 0.399 | 0.408 | 0.444 |
| 24 | 0.585 | 0.525 | 0.672 | | 0.003 | 0.005 | 0.006 | 0.093 | 0.054 | 0.081 |
| 25 | 0.576 | 0.518 | 0.667 | 0.997 | | 0.013 | 0.013 | 0.085 | 0.043 | 0.067 |
| 26 | 0.547 | 0.485 | 0.642 | 0.995 | 0.987 | | -0.002 | 0.104 | 0.062 | 0.090 |
| 27 | 0.578 | 0.517 | 0.663 | 0.994 | 0.987 | 1.002 | | 0.106 | 0.063 | 0.091 |
| 28 | 0.580 | 0.522 | 0.671 | 0.911 | 0.919 | 0.901 | 0.900 | | 0.015 | 0.011 |
| 29 | 0.572 | 0.518 | 0.665 | 0.948 | 0.958 | 0.940 | 0.939 | 0.985 | | -0.003 |
| 30 | 0.542 | 0.485 | 0.642 | 0.922 | 0.936 | 0.914 | 0.913 | 0.989 | 1.003 | |
| 31 | 0.638 | 0.578 | 0.722 | 0.928 | 0.936 | 0.915 | 0.921 | 0.995 | 0.989 | 0.986 |
| 32 | 0.600 | 0.537 | 0.687 | 0.945 | 0.900 | 0.876 | 0.876 | 0.989 | 0.990 | 0.995 |
| 33 | 0.613 | 0.550 | 0.696 | 0.929 | 0.917 | 0.896 | 0.895 | 0.992 | 0.995 | 1.002 |
| 34 | 0.571 | 0.507 | 0.667 | 0.935 | 0.960 | 0.942 | 0.944 | 0.992 | 1.001 | 0.998 |
| 35 | 0.565 | 0.500 | 0.661 | 0.939 | 0.949 | 0.931 | 0.931 | 0.993 | 1.000 | 1.003 |
| 36 | 0.575 | 0.521 | 0.666 | 0.884 | 0.945 | 0.926 | 0.926 | 0.998 | 0.999 | 1.001 |
| 37 | 0.561 | 0.503 | 0.657 | 0.903 | 0.954 | 0.934 | 0.938 | 0.992 | 0.999 | 1.001 |
| 38 | 0.609 | 0.555 | 0.702 | 0.952 | 0.938 | 0.916 | 0.922 | 0.994 | 0.993 | 0.995 |

TABLE 5. Continued

| <i>C. ensicauda</i> | | | | | | | | |
|---------------------|-------|--------|-------|--------|--------|-------|--------|--------|
| Okinawa Group | | | | | | | | |
| | 31 | 32 | 33 | 34 | 35 | 36 | 37 | 38 |
| 1 | 0.285 | 0.316 | 0.310 | 0.338 | 0.349 | 0.373 | 0.371 | 0.308 |
| 2 | 0.272 | 0.302 | 0.294 | 0.323 | 0.333 | 0.351 | 0.350 | 0.294 |
| 3 | 0.285 | 0.316 | 0.311 | 0.337 | 0.349 | 0.374 | 0.372 | 0.305 |
| 4 | 0.291 | 0.324 | 0.316 | 0.346 | 0.358 | 0.381 | 0.380 | 0.313 |
| 5 | 0.300 | 0.325 | 0.324 | 0.348 | 0.360 | 0.394 | 0.387 | 0.314 |
| 6 | 0.309 | 0.341 | 0.336 | 0.366 | 0.378 | 0.403 | 0.401 | 0.331 |
| 7 | 0.285 | 0.300 | 0.304 | 0.326 | 0.333 | 0.373 | 0.362 | 0.292 |
| 8 | 0.305 | 0.296 | 0.310 | 0.325 | 0.328 | 0.380 | 0.359 | 0.291 |
| 9 | 0.239 | 0.267 | 0.261 | 0.286 | 0.293 | 0.308 | 0.307 | 0.263 |
| 10 | 0.262 | 0.297 | 0.287 | 0.321 | 0.328 | 0.349 | 0.350 | 0.292 |
| 11 | 0.253 | 0.286 | 0.277 | 0.309 | 0.315 | 0.336 | 0.336 | 0.281 |
| 12 | 0.251 | 0.284 | 0.277 | 0.307 | 0.313 | 0.333 | 0.333 | 0.278 |
| 13 | 0.275 | 0.309 | 0.299 | 0.336 | 0.342 | 0.365 | 0.363 | 0.304 |
| 14 | 0.249 | 0.274 | 0.271 | 0.298 | 0.302 | 0.327 | 0.326 | 0.269 |
| 15 | 0.260 | 0.283 | 0.281 | 0.308 | 0.314 | 0.331 | 0.341 | 0.278 |
| 16 | 0.280 | 0.310 | 0.300 | 0.337 | 0.342 | 0.348 | 0.351 | 0.303 |
| 17 | 0.287 | 0.320 | 0.311 | 0.348 | 0.353 | 0.378 | 0.375 | 0.316 |
| 18 | 0.284 | 0.321 | 0.309 | 0.350 | 0.355 | 0.367 | 0.374 | 0.317 |
| 19 | 0.266 | 0.298 | 0.290 | 0.322 | 0.329 | 0.349 | 0.349 | 0.291 |
| 20 | 0.256 | 0.286 | 0.280 | 0.309 | 0.315 | 0.337 | 0.336 | 0.280 |
| 21 | 0.450 | 0.511 | 0.489 | 0.561 | 0.570 | 0.554 | 0.579 | 0.496 |
| 22 | 0.547 | 0.622 | 0.597 | 0.678 | 0.693 | 0.652 | 0.686 | 0.589 |
| 23 | 0.326 | 0.375 | 0.363 | 0.405 | 0.414 | 0.406 | 0.421 | 0.354 |
| 24 | 0.075 | 0.056 | 0.074 | 0.067 | 0.063 | 0.123 | 0.102 | 0.049 |
| 25 | 0.066 | 0.047 | 0.064 | 0.057 | 0.053 | 0.105 | 0.087 | 0.041 |
| 26 | 0.088 | 0.068 | 0.088 | 0.076 | 0.071 | 0.132 | 0.110 | 0.060 |
| 27 | 0.083 | 0.064 | 0.082 | 0.077 | 0.072 | 0.133 | 0.111 | 0.057 |
| 28 | 0.005 | 0.008 | 0.006 | 0.002 | 0.007 | 0.011 | 0.008 | 0.008 |
| 29 | 0.011 | 0.001 | 0.007 | 0.001 | 0.000 | 0.011 | 0.005 | -0.001 |
| 30 | 0.014 | -0.001 | 0.005 | -0.001 | -0.003 | 0.005 | -0.002 | 0.002 |
| 31 | | 0.005 | 0.000 | 0.003 | 0.006 | 0.007 | 0.008 | 0.004 |
| 32 | 0.995 | | 0.001 | -0.003 | -0.004 | 0.011 | 0.004 | 0.000 |
| 33 | 1.000 | 0.999 | | -0.001 | 0.000 | 0.006 | 0.004 | 0.003 |
| 34 | 0.997 | 1.003 | 1.001 | | -0.004 | 0.007 | 0.002 | -0.001 |
| 35 | 0.994 | 1.004 | 1.000 | 1.004 | | 0.009 | 0.002 | -0.001 |
| 36 | 0.993 | 0.989 | 0.994 | 0.994 | 0.991 | | 0.000 | 0.012 |
| 37 | 0.992 | 0.996 | 0.996 | 0.998 | 0.998 | 1.000 | | 0.006 |
| 38 | 0.996 | 1.000 | 0.997 | 1.001 | 1.001 | 0.989 | 0.994 | |

the mean D value between *C. ensicauda* and 20 remaining populations of *C. pyrrhogaster* is 0.330 (range 0.239–0.418). Thus, in spite of their adjacency to the range of *C. ensicauda*, southernmost populations of *C. pyrrhogaster* reach higher level of genetic differentiation from *C. ensicauda* than do remaining conspecific populations.

DISCUSSION

No overlap of electromorphs was detected at three loci (*Acp-A*, *Iddh-A* and *S-Me-A*) between *C. ensicauda* and *C. pyrrhogaster*, and no individual showed any intermediate condition. Furthermore in specimens of *C. pyrrhogaster* from northeastern Japan, we have not detected any individual sharing any electromorph with *C. ensicauda* at the three loci (Hayashi and Matsui, unpublished). Therefore, it is clear that *C. ensicauda* and *C. pyrrhogaster* are genetically distinct from each other.

Levels of genetic differentiation have been investigated at the interspecific and intersubspecific ranks in other genera of the family Salamandridae (*Taricha* [6] and *Triturus* [22]). Genetic differentiation estimates derived from these data might provide an indication of the range in values one might expect between biological species within this family. Nei's D values identified between the two species of Japanese *Cynops* have the range of 0.239 to 0.724 ($\bar{x}=0.356$) and are smaller than interspecific values calculated in *Triturus* species (range from 0.702 to 1.321, $\bar{x}=1.117$), but nearly correspond with the values estimated for three species of *Taricha* (range from 0.261 to 0.687, $\bar{x}=0.466$). It is also noteworthy that the greatest genetic difference was observed between geographically most adjacent populations of *C. pyrrhogaster* from southernmost Kyushu and *C. ensicauda*. From these genetic view points, two forms of Japanese *Cynops*, one from the main islands (*pyrrhogaster*) and another from the Ryukyu Archipelago (*ensicauda*), are judged to be well differentiated from each other at the species level, and the designation of the latter form as a subspecies of the former is unfounded.

Inger [1] studied morphological variations in newts from Okinawajima and Amami-Oshima Is-

lands, and considered the differences between these two populations sufficient to warrant subspecific distinction. Thus he described the Okinawa population as a distinct subspecies, *Triturus ensicaudus popei*. On the contrary, Koba [23] and Nakamura and Uéno [4], without presenting valid evidence, opposed such a distinction. Our biochemical analysis shows that populations from the Amami Group form a group distinct from those from Okinawa Group with Nei's D values between them ranging from 0.059 to 0.140 ($\bar{x}=0.084$). Although the amount of genetic differentiation between these two groups is smaller than values estimated among intersubspecific populations in *Taricha* (range 0.104–0.309) [24], the geographic pattern of biochemical variation is consistent with the pattern of morphological variations reported by Inger [1], and seems to support the subspecific status of *C. ensicauda popei* (new comb.).

Sawada [2] divided *C. pyrrhogaster* into six "local races" (Hiroshima, Sasayama, Atsumi, Kanto, Tohoku and Intermediate races) from the analysis of the geographic variations in the pattern of ventral markings and body proportions. Later, Mertens [25] gave a name *Triturus* (= *Cynops*) *pyrrhogaster sasayamae* for "Sasayama race" and the other "races" have remained unnamed and included in a single subspecies *C. p. pyrrhogaster*. Our biochemical study contained specimens of two "local races" belonging to different subspecies ("Sasayama race" = *C. p. sasayama*, distributed in northern Kinki and eastern Chugoku Districts (populations 1–8), and parts of "Hiroshima race" = *C. p. pyrrhogaster*, distributed in Kyushu, Shikoku and western Chugoku Districts (populations 9–23)). In the present study, *C. pyrrhogaster* showed significant heterogeneity in electromorph frequencies at all polymorphic loci (Table 4) and it is clear that local populations are genetically well isolated and diverged. Especially, southernmost Kyushu populations (populations 21–23) showed a high level of genetic differentiation from others, and consequently populations of Hiroshima race (i.e. *C. p. pyrrhogaster*) did not form a single group (Fig. 2). This unexpected result indicates that the widely ranging "Hiroshima race" contains at least two distinct groups. By contrast, the "Sasayama race" was found to form a single group.

Our data offer an interesting perspective not only into taxonomic problems but also into genetic divergence in *C. pyrrhogaster*. We are currently conducting an extensive sampling throughout the range of this species and additional electrophoretic studies are in progress.

The molecular clock hypothesis has been applied to date divergence events of taxa [26, 27]. Since molecular clocks need calibrations before applied, some calibrations were estimated for electrophoretic clock, which is a kind of molecular clocks, from different sources. Nei and Roychoudhury [11] originally suggested a calibration of $1D=5$ MY irrespective of animal groups. Later, Maxson and Maxson [10] calibrated the electrophoretic clock at $1D=14$ MY in plethodontid salamanders based on the correlation with the albumin clock, and the value has generally been used [28, 29]. Calibration could be obtained if geological information of the time of isolation between two populations is available. Because newts cannot cross over the sea, a strait must be a sufficient barrier for gene flow between populations. The formation of the straits between the Japanese main islands and the Ryukyu Archipelago assuredly marked the cessation of gene exchange between populations separated by the sea. The formation of the strait between the Amami and Okinawa Groups also must have prevented newts from gene exchange between isolated populations.

Kizaki and Oshiro [30, 31] estimated that the strait between the mainlands and the Ryukyu Archipelago south of Amami Group was formed about 8 MYBP during late Miocene times and that the strait between the Amami and Okinawa Groups was formed between 1 and 1.5 MYBP during middle Pleistocene times. If the mean D value between *C. ensicauda* and *C. pyrrhogaster* (0.356) corresponds to 8 MY, a calibration of $1D=22$ MY is obtained. On the other hand, when the mean D value between populations of the Amami and Okinawa Groups (0.078) is compared to the duration between 1 and 1.5 MY, the electrophoretic clock is calibrated at $1D=13-19$ MY. Since both genetic and geological estimates themselves may contain a considerable amount of errors, the difference in these two estimates may not be so

great. At least, calibrations of electrophoretic clock in Japanese *Cynops* are regarded as far greater than Nei's original estimate ($1D=5$ MY) and are more similar to the calibration used in plethodontid salamanders ($1D=14$ MY). This result seems to suggest the presence of limited range of calibration which is specific to the order Caudata.

ACKNOWLEDGMENTS

Thanks are due to Dr. M. Tasumi, supervisor of the senior author, for his continued support and encouragement. Dr. D. M. Green and Mr. T. Hikida reviewed an early draft of this manuscript. We thank the following persons who provided specimens and aided in field work: Messrs. T. Hikida, M. Hinoue, N. Honda, T. Izumi, A. Mori, H. Okawa, I. Okouchi, H. Ota, S. Tanabe, S. Tanaka, Y. Utsunomiya, and S. Watanabe, Ms. T. Utsunomiya and Professor T. Seto. For computer assistance, we thank Messrs. T. Hikida and R. Kitamura. Dr. R. Murphy provided many helpful comments.

REFERENCES

- Inger, R. F. (1947) Preliminary survey of the amphibians of the Riukiu Islands. *Fieldiana: Zool.*, **32**: 295-352.
- Sawada, S. (1963) Studies on the local races of the Japanese newt, *Triturus pyrrhogaster* Boie. I. Morphological characters. *J. Sci. Hiroshima Univ., Ser. B*, **1**, **21**: 135-165.
- Kawamura, T. (1950) Studies on hybridization in amphibians. III. Reciprocal hybrids between *Triturus pyrrhogaster* (Boie) and *Triturus ensicauda* (Hallowell). *J. Sci. Hiroshima Univ., Ser. B*, **1**, **11**: 71-79.
- Nakamura, K. and Uéno, S.-I. (1963) Japanese Reptiles and Amphibians in Colour, Hoikusha, Osaka. (In Japanese)
- Oyama, J. and Nakamura, D. (1939) Über Artbastarde *Triturus pyrrhogaster* (Boie) ♀ und *T. ensicauda* (Hallowell) ♂. *Jpn. J. Genet.*, **15**: 78-79. (In Japanese)
- Hedgecock, D. and Ayala, F. J. (1974) Evolutionary divergence in the genus *Taricha* (Salamandridae). *Copeia*, **1974**: 738-747.
- Kalezić, M. L. (1984) Evolutionary divergences in the smooth newt, *Triturus vulgaris* (Urodela, Salamandridae): electrophoretic evidence. *Amphibia-Reptilia*, **5**: 221-230.
- Ragghianti, M. and Wake, D. B. (1986) Genic variation and its evolutionary implications in the Italian newt, *Triturus italicus*. *Herpetologica*, **42**:

- 206–214.
- 9 Tabachnich, W. J. (1977) Geographic variation of five biochemical polymorphisms in *Notophthalmus viridescens*. *J. Hered.*, **68**: 117–122.
 - 10 Maxson, L. R. and Maxson, R. D. (1979) Comparative albumin and biochemical evolution in plethodontid salamanders. *Evolution*, **33**: 1057–1062.
 - 11 Nei, M. and Roychoudhury, A. K. (1974) Genic variation within and between the three major races of man, caucasoids, negroids, and mongoloids. *Am. J. Hum. Genet.*, **26**: 421–443.
 - 12 Ayala, F. J., Powell, J. R., Tracey, M. L., Mourão, C. A., and Pérez-Salas, S. (1972) Enzyme variability in the *Drosophila willistoni* group. IV. Genic variation in natural populations of *Drosophila willistoni*. *Genetics*, **70**: 113–139.
 - 13 Delorenzo, R. L. and Ruddle, F. H. (1970) Glutamate oxaloacetate transaminase (GOT) genetics in *Mus musculus*; linkage, polymorphism, and phenotypes of the GOT-2 and GOT-1 loci. *Biochem. Genet.*, **4**: 259–274.
 - 14 Sato, C. (1982) The variation of proteins and enzymes in blood. In "Methodology of Human Genetics". Ed. by E. Matsunaga, Kyoritsu-Shuppan, Tokyo, pp. 114–155. (In Japanese)
 - 15 Shaw, C. R. and Prasad, R. (1970) Starch gel electrophoresis of enzymes — a compilation of recipes. *Biochem. Genet.*, **4**: 297–320.
 - 16 Selander, R. K., Smith, M. H., Yang, S. Y., Johnson, W. E. and Gentry, J. B. (1971) Biochemical polymorphism and systematics in the genus *Peromyscus*. I. Variation in the old-field mouse (*Peromyscus polionotus*). *Stud. Genet.* 6. Univ. Texas Publ., **7103**: 49–90.
 - 17 Nomenclature Committee of the International Union of Biochemistry. (1984) *Enzyme Nomenclature* 1984. Academic Press, NY.
 - 18 Murphy, R. W. and Crabtree, C. B. (1985) Evolutionary aspects of isozyme patterns, number of loci, and tissue-specific gene expression in the prairie rattlesnake, *Crotalus viridis viridis*. *Herpetologica*, **41**: 451–470.
 - 19 Nei, M. (1978) Estimation of average heterozygosity and genetic distance from a small number of individuals. *Genetics*, **89**: 583–590.
 - 20 Sneath, P. H. A. and Sokal, R. R. (1973) *Numerical Taxonomy*. W. H. Freeman Co., San Francisco.
 - 21 Workman, P. L. and Niswander, J. D. (1970) Population studies on southwestern Indian tribes. II. Local genetic differentiation in the Papago. *Am. J. Hum. Genet.*, **22**: 24–29.
 - 22 Kalezić, M. L. and Hedgecock, D. (1980) Genetic variation and differentiation of three common European newts (*Triturus*) in Yugoslavia. *Br. J. Herpetol.*, **6**: 49–57.
 - 23 Koba, K. (1962) Studies on the Snakes of the Genus *Trimeresurus* of the Amami and Tokara Islands. Japan, Japan Society for the Promotion of Science, Tokyo. (In Japanese)
 - 24 Hedgecock, D. (1976) Genetic variation in two widespread species of salamanders, *Taricha granulosa* and *Taricha torosa*. *Biochem. Genet.*, **14**: 561–576.
 - 25 Mertens, V. R. (1969) Über die Rassen des Feuerbauchmolches (*Triturus pyrrhogaster*) und ihre wissenschaftlichen Namen. *Aquar.-Terrar.-Z.*, **22**: 114–117.
 - 26 Sarich, V. M. and Wilson, A. C. (1967) Immunological time scale for hominid evolution. *Science*, **158**: 1200–1203.
 - 27 Thorpe, J. P. (1982) The molecular clock hypothesis : biochemical evolution, genetic differentiation and systematics. *Ann. Rev. Ecol. Syst.*, **13**: 139–168.
 - 28 Larson, A. (1983) A molecular phylogenetic perspective on the origins of a lowland tropical salamander fauna. I. Phylogenetic inferences from protein comparisons. *Herpetologica*, **39**: 85–99.
 - 29 Larson, A., Wake, D. B., Maxson, L. R. and Highton, R. (1981) A molecular phylogenetic perspective on the origins of morphological novelties in the salamanders of the tribe Plethodontini (Amphibia, Plethodontidae). *Evolution*, **35**: 405–422.
 - 30 Kizaki, K. and Oshiro, I. (1977) Paleogeography of the Ryukyu Islands. *Marine Sciences Monthly*, **9**: 542–549. (In Japanese with English summary)
 - 31 Kizaki, K. and Oshiro, I. (1980) The Origin of the Ryukyu Islands. In "Natural History of Ryukyu". Ed. by K. Kizaki, Tsukiji-Shokan, Tokyo, pp. 8–37. (In Japanese)