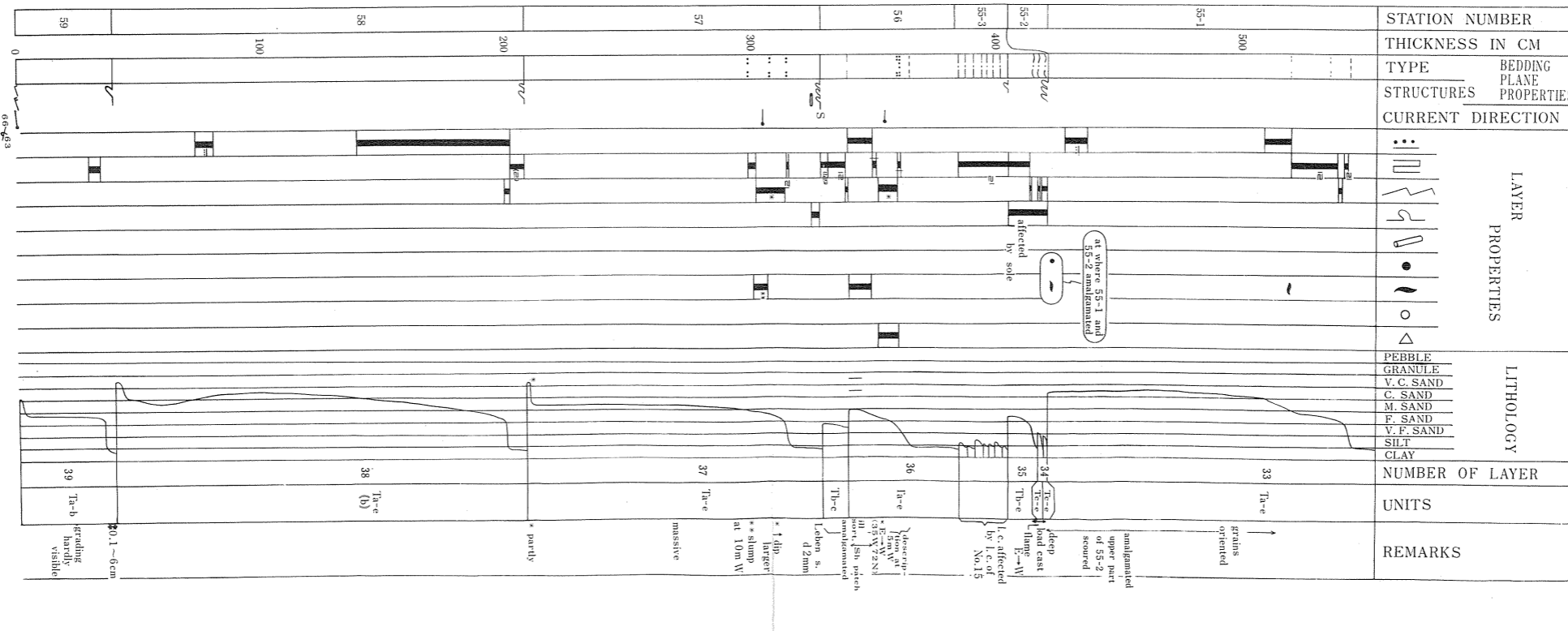
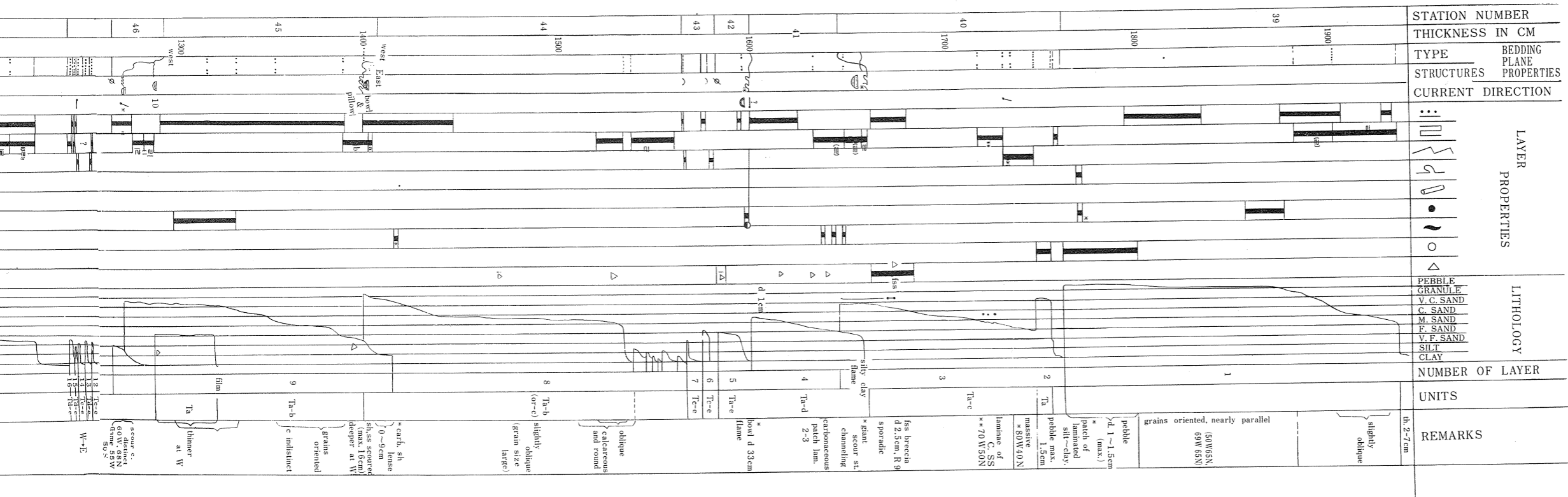
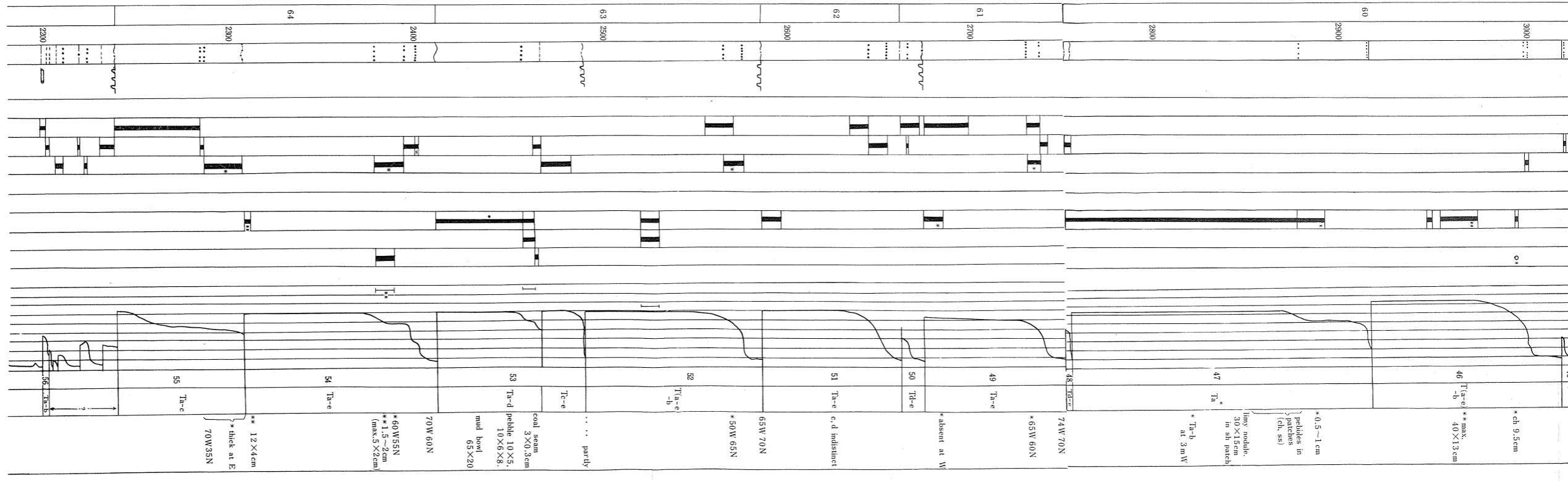
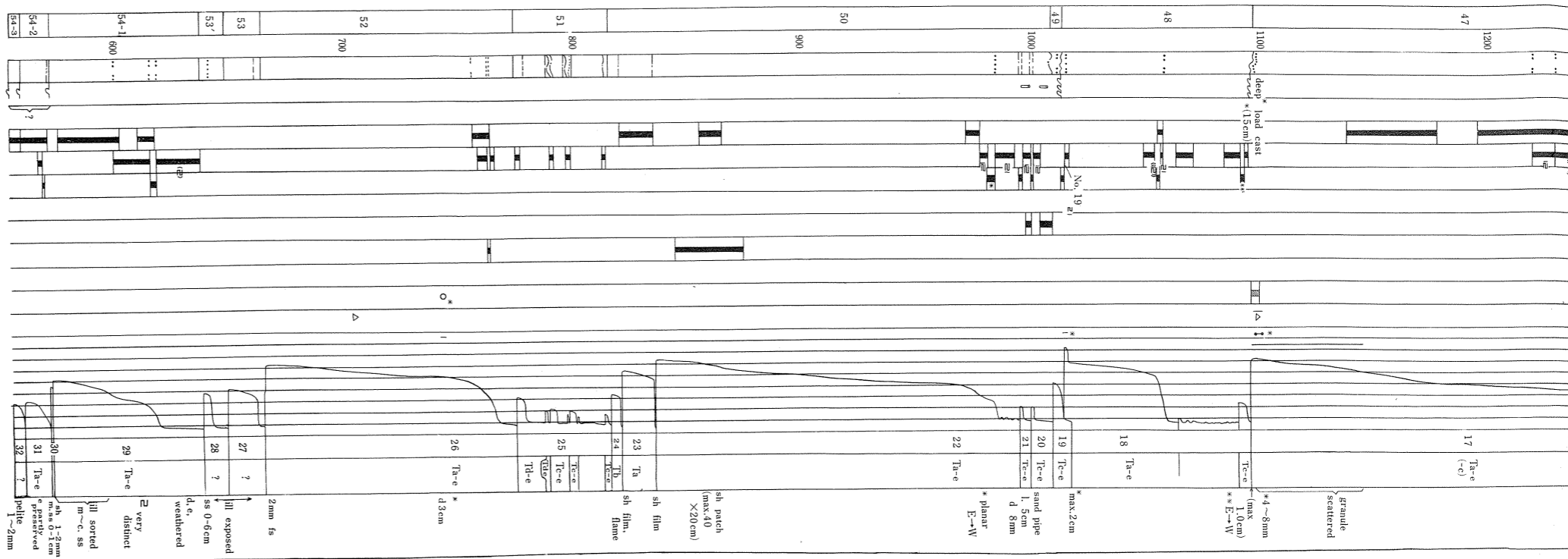


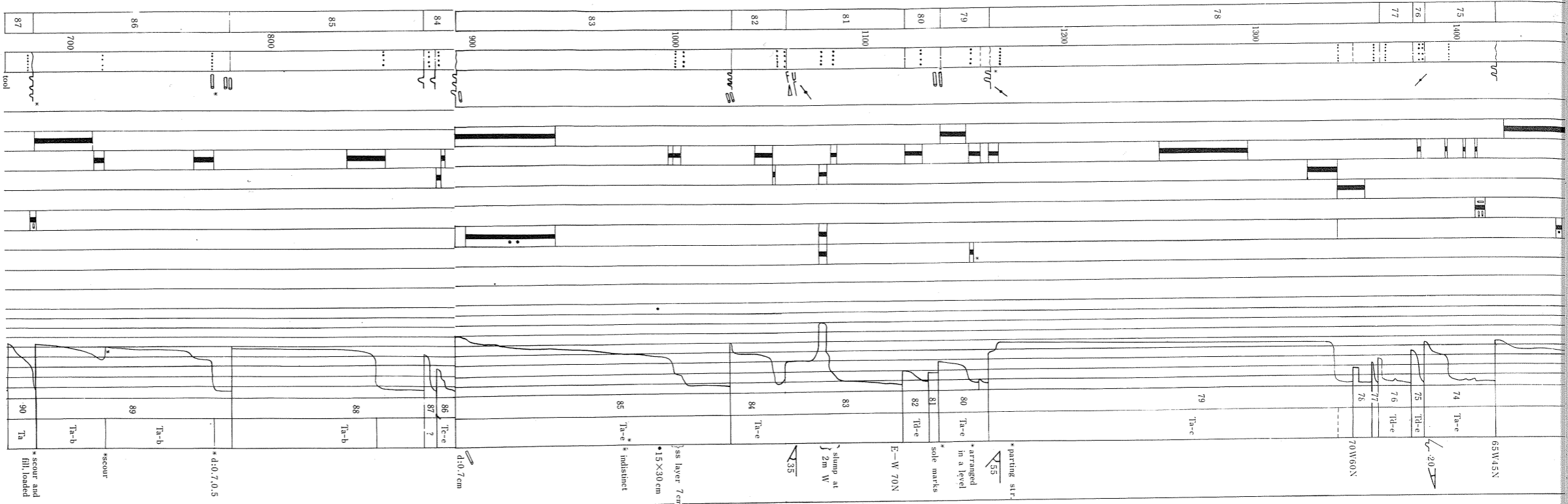
SEDIMENTOLOGICAL COLUMNAR SECTION - KIRIMEZAKI, W



STATION NUMBER	THICKNESS IN CM	TYPE	BEDDING PLANE PROPERTIES	STRUCTURES	CURRENT DIRECTION	PEBBLE GRANULE V. C. SAND C. SAND M. SAND F. SAND V. F. SAND SILT CLAY	NUMBER OF LAYER	UNITS	REMARKS
46	1300							Ta-e	
45								Ta-b	
44	1400							Ta-c	
43								Ta-d	
42								Ta-e	
41								Ta-e	
40								Ta-e	
39								Ta-e	

STATION NUMBER	THICKNESS IN CM	TYPE	BEDDING PLANE PROPERTIES	STRUCTURES	CURRENT DIRECTION	PEBBLE GRANULE V. C. SAND C. SAND M. SAND F. SAND V. F. SAND SILT CLAY	NUMBER OF LAYER	UNITS	REMARKS
59								Ta-b	at 0.1-0.3cm grading hardly visible
58	100							Ta-e (b)	
57	200							Ta-e	massive
56	300							Ta-e	massive
55-3								Ta-e	massive
55-2	400							Ta-e	at where 55-1 and 55-2 amalgamated
55-1	500							Ta-e	at where 55-1 and 55-2 amalgamated
33								Ta-e	at where 55-1 and 55-2 amalgamated
34								Ta-e	at where 55-1 and 55-2 amalgamated
35								Ta-e	at where 55-1 and 55-2 amalgamated
36								Ta-e	at where 55-1 and 55-2 amalgamated
37								Ta-e	at where 55-1 and 55-2 amalgamated
38								Ta-e	at where 55-1 and 55-2 amalgamated
39								Ta-b	at where 55-1 and 55-2 amalgamated





STATION NUMBER	THICKNESS IN CM	TYPE OF STRUCTURES	CURRENT DIRECTION	PEBBLE GRANULE	NUMBER OF LAYERS	UNITS	REMARKS
281	300				1	Ta-e	
282					2	Ta-e	* Lehen, upper end unknown
283	200			• 20x10 • 10x3	3	Ta-e	* part of contact hardly visible lehen
284	100				4	Ta-e	
285					5	Ta-e	
286					6	Ta-e	* sh. patch 30x10cm

NOTATION
BEDDING PLANE PROPERTIES

- very sharp flat contact
- sharp flat contact
- distinct flat contact
- gradual transition
- transition gradual and slow, hardly visible
- undulating contact, gradations distinguished as above
- erosional surface
- irregular contact
- flute casts
- flute casts, superimposed
- flute casts, deformed by load casting
- groove casts
- groove casts, deformed by load casting
- prod casts
- bounce casts
- brush casts
- load casts
- lower and upper bedding planes not exposed

CURRENT DIRECTION

- line of flow and pointing distinct (SW to NE)

LAYER PROPERTIES

- graded bedding, positive
- graded bedding, negative
- parallel lamination
- coarse grained laminae predominate
- fine grained laminae predominate
- current ripple lamination
- slump structure
- track and burrows
- clay pebbles *
- shale patches and shale lenses, including coaly seams *
- pebbles
- inclusions
- coarser grained than surroundings
- finer grained than surroundings
- unit with concave bottom and flat top, (scour and fill structure, channel, washout)
- as above: fill coarser than surroundings with layer of pebbles parallel to the bottom

* New symbols added